



Beliggenhet og høyder må oppfattes som orienterende.



Lillesand kommune  
Enhet for VAR



Dato: 2018.10.22  
Sign: ISE

Målestokk  
1:1000



Beliggenhet og høyder må oppfattes som orienterende.



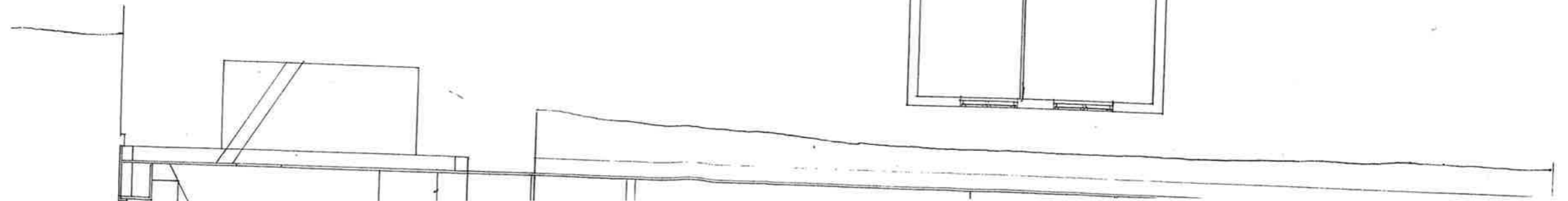
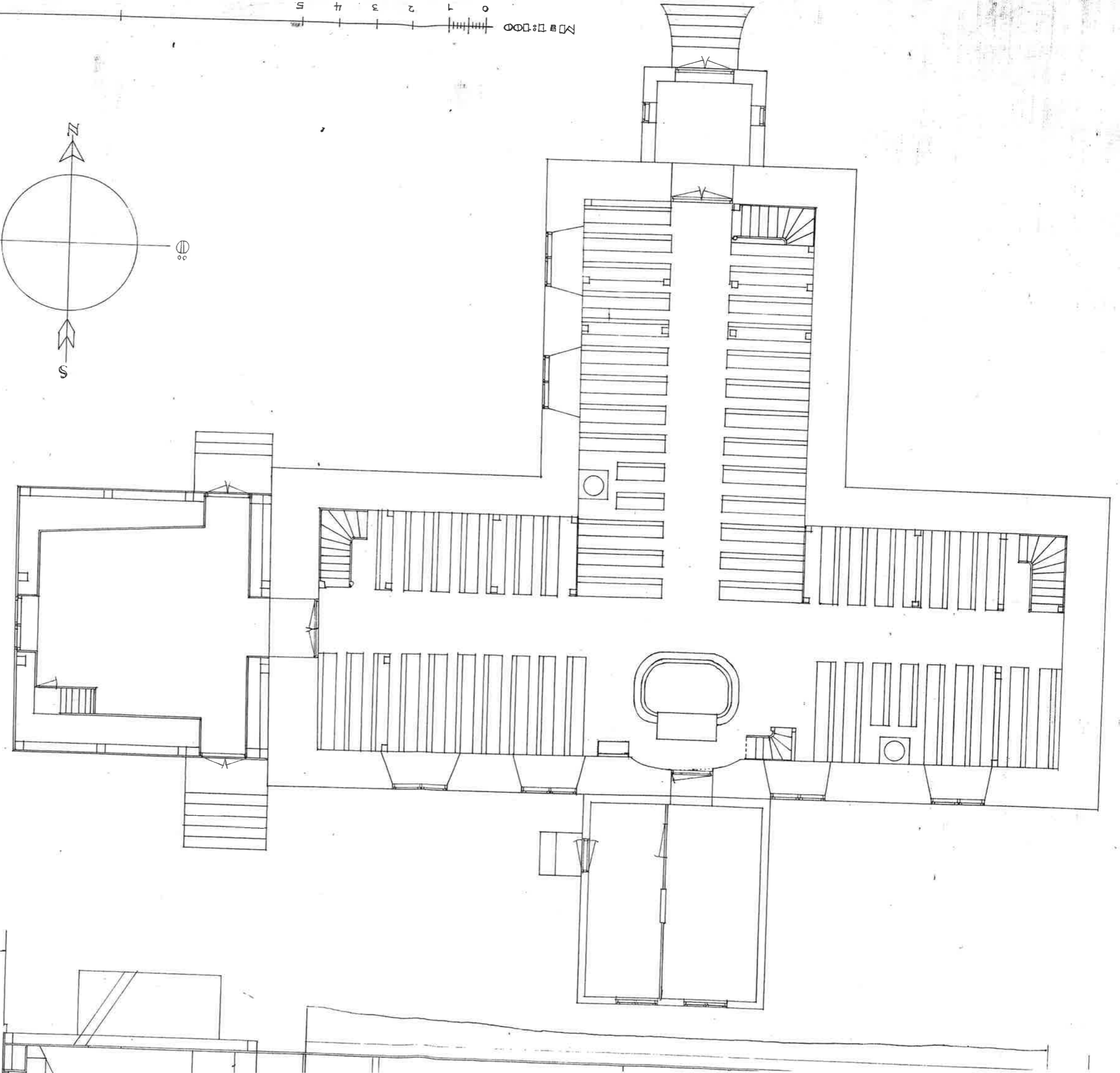
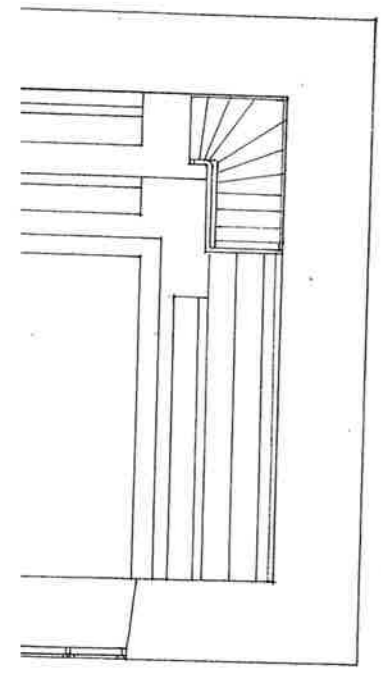
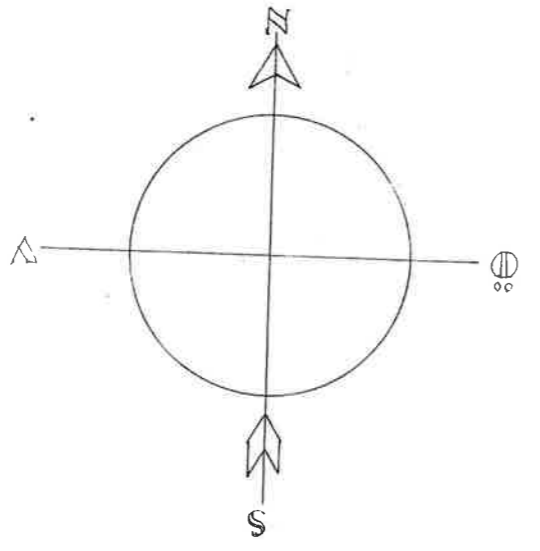
Lillesand kommune  
Enhet for VAR

Dato: 2018.10.22  
Sign: ISE

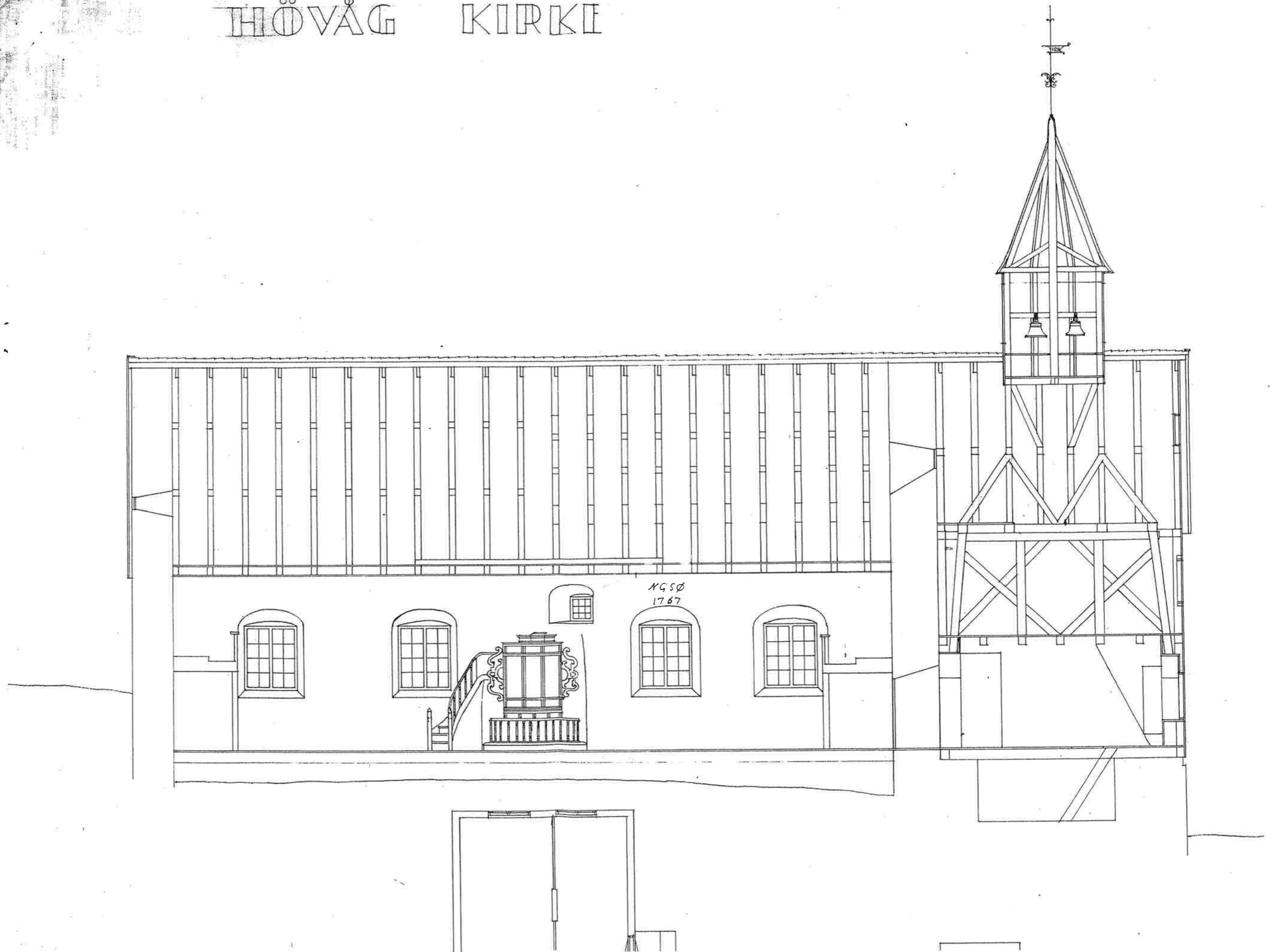


Målestokk  
1:250

Scale bar with markings from 0 to 5 and the text "M 1:100" (mirrored).



# HÖVÅG KIRKE



000:150

