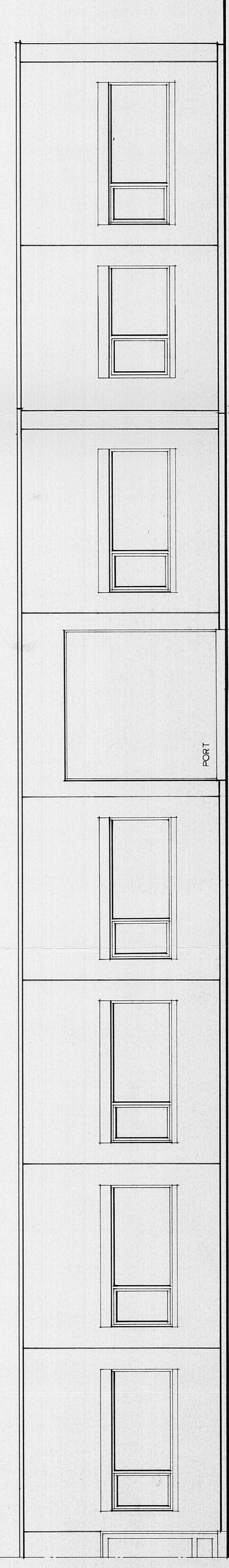


FOR FUNDAMENTER/SÅLER - SE TEGNING FRA BONDE & CO.

SNITT I-I



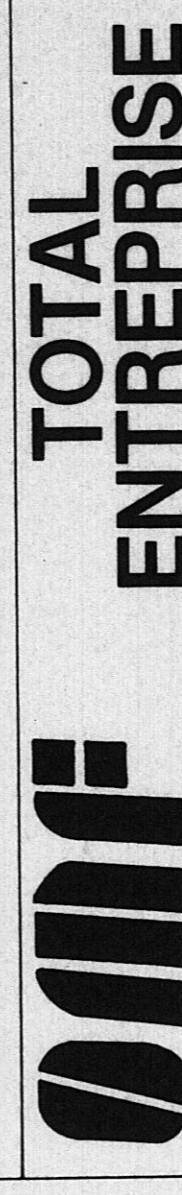
NORDVESTFASADE



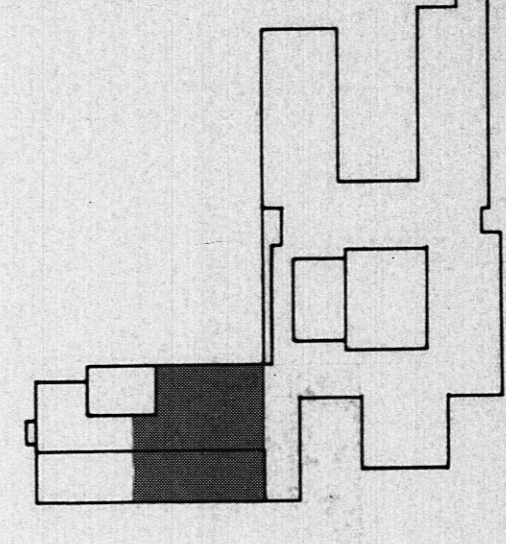
SYDØSTFASADE

Z.7.88: PORTHØYDE (300) SNITT F-F  
 23.6.88: SNITT OVERGANG HØY-LAVBYGG  
 13.6.88: SYDØSTFASADE KORRIGERT

SKARNES VIDEREÅENDE SKOLE



T.M.F. JELD A.S.  
 PB. 813 2201 KONGSVINGER TLF. 066 15022 TELEFAX 19796



MALESTOKK: 1:50 TEGNET AV: DATO: 26.4.88 SK. NR.: 8803

TEGNING NR.: 95

SNITT: FASADER, DEL I

PAUL CAPPELLENS ARKITEKTKONTOR, ØLE PLANDERS GATE 7, 0505 STAVANGER