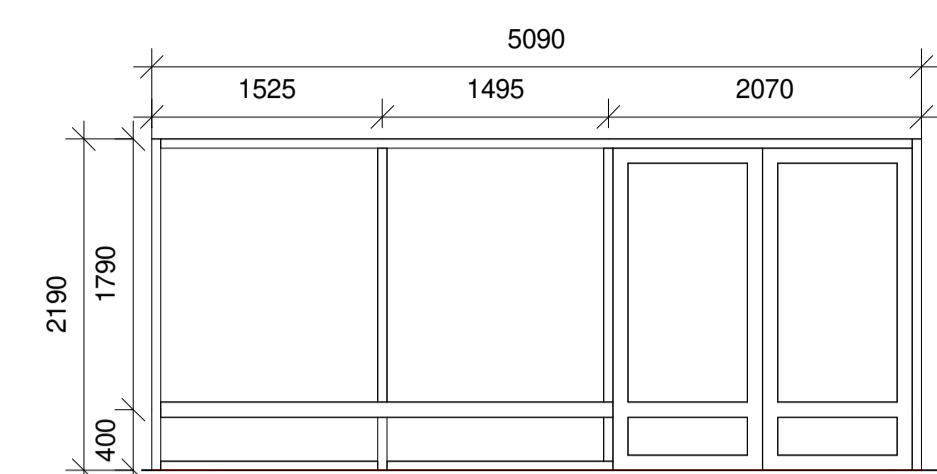
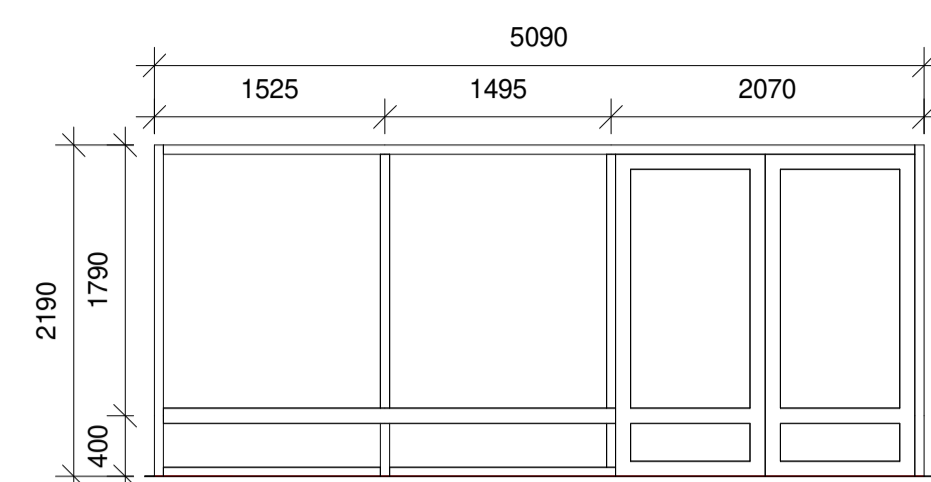
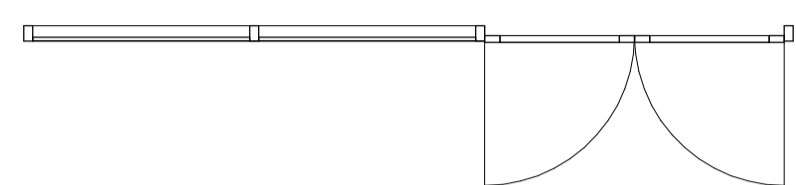


NB! Dette er en orienterende tegning mht. eksisterende forhold. Det tas forbehold om målrichtigkeit.

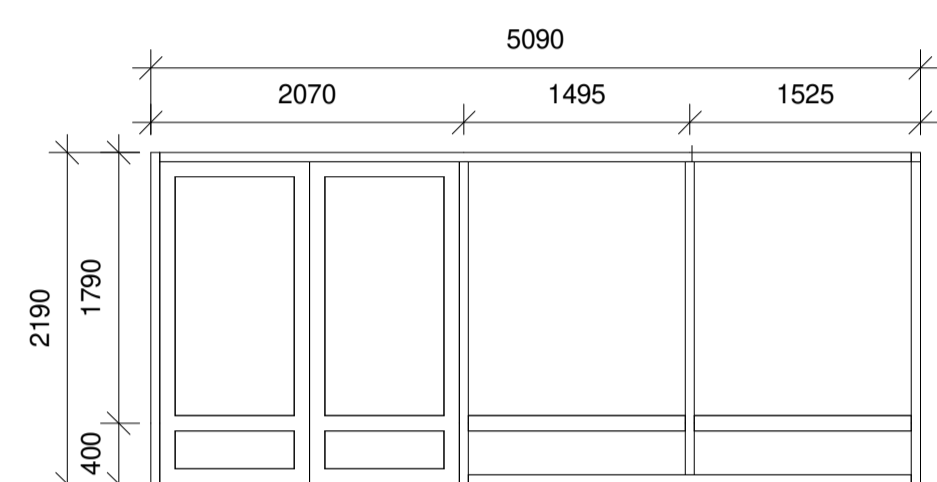
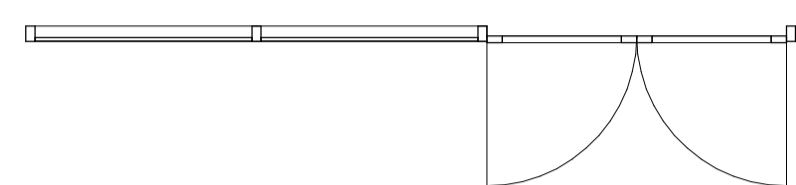
Før utførelse og bestilling må alle mål kontrolleres på stedet. Alle mål på eksisterende bygg som er avgjørende for rett bestilling av nye komponenter, skal kontrollmåles av entreprenør før endelige bestillinger.



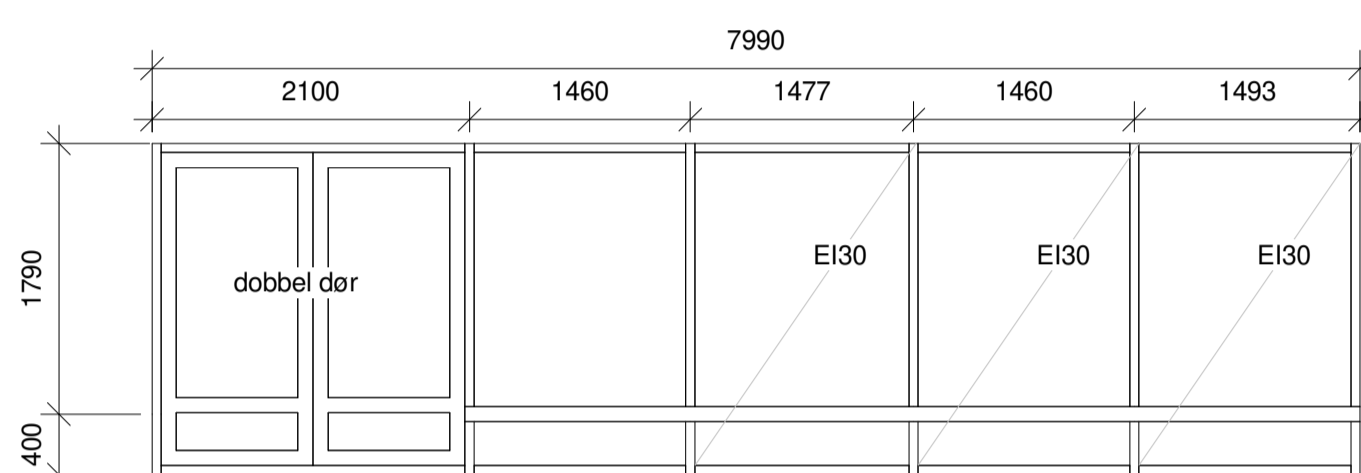
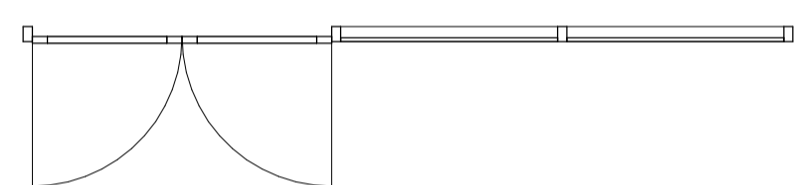
AV232.001



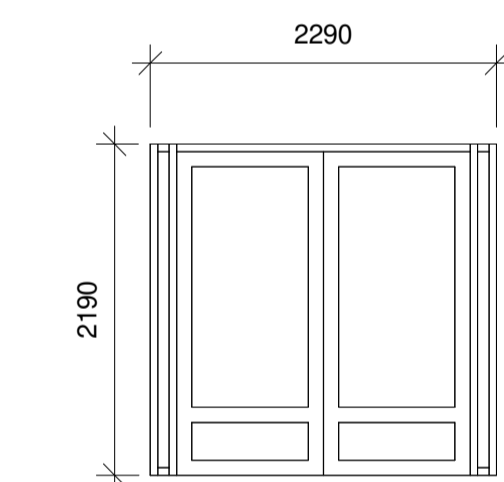
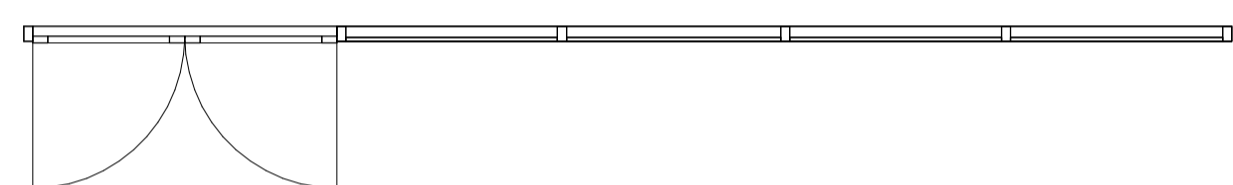
AV232.002



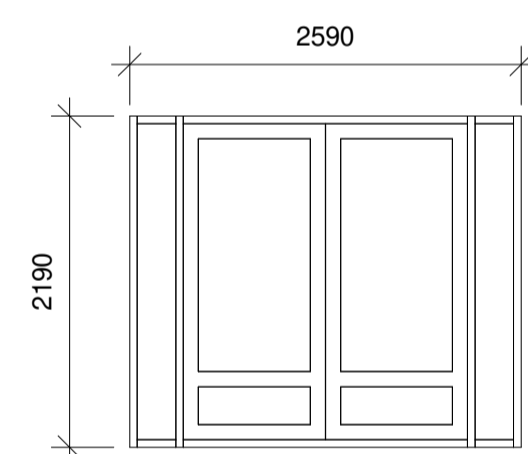
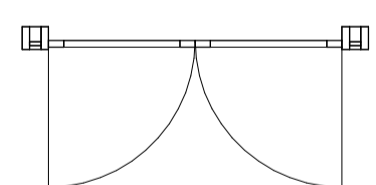
AV232.003



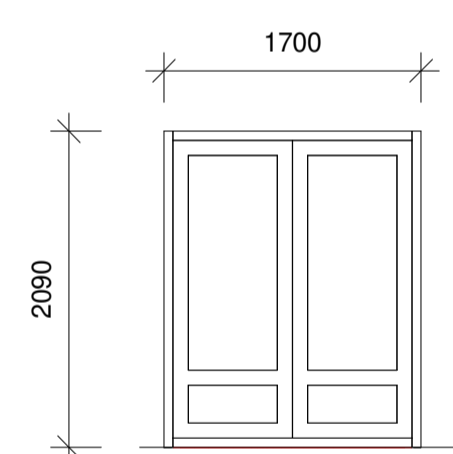
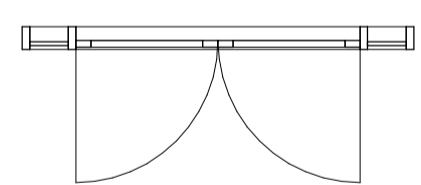
AV232.004



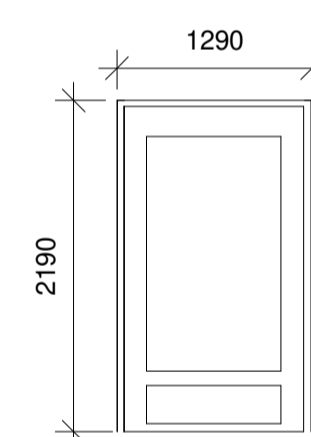
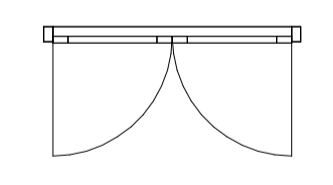
AV232.005



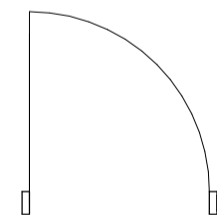
AV232.006



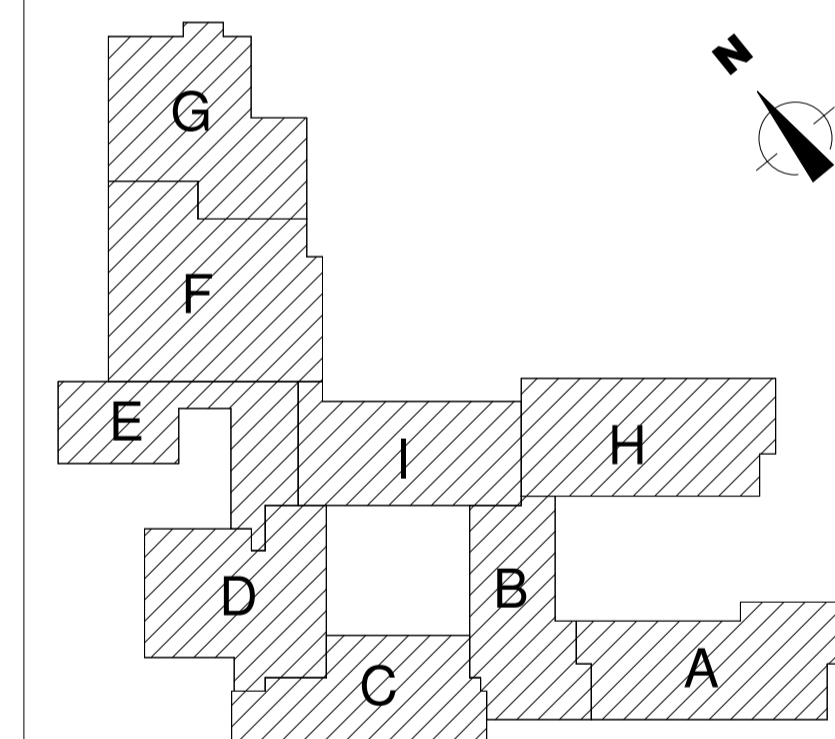
AV232.007



AV232.008



GLASSFELT				
Type Mark	Type	Unconnected Height	Length	Count
AV232.001	AV232.001_Inngang Yttervegg_5090x2190	2190	5090	1
AV232.002	AV232.002_Inngang Yttervegg_5090x2190	2190	5090	1
AV232.003	AV232.003_Inngang Yttervegg_5090x2190	2190	5090	1
AV232.004	AV232.004_Inngang Yttervegg_7990x2190	2190	7990	1
AV232.005	AV232.005	2190	2290	1
AV232.006	AV232.006 2190x2610 - Hovedinngang 2			3
AV232.007	AV232.007			3
AV232.008	AV232.008	2446	1290	1
Grand total:				12



Byggherre:
Hedmark Fylkeskommune
Parkgata 64
2325 Hamar



Ri Arkitektur
Ryensvingen 5, 8.etg
0680 Oslo
Tlf.: 91 91 61 11 E-post: firmapost@rikarkitektur.no

Foreløpig tegning:
15.10.2018

DATE:	BESKRIVELSE:	REV:	TEGN:	GODKJ:

Prosjekt Skarnes V.G.S. Skolevegen 22 2100 Skarnes	Gnr: 84 Bnr: 13 Målestokk / Format 1 : 50 A1
Prosj.Nr Fase 18429 Tilbudstegning	Opprettet dato 15.11.2018
Tegningsnavn Glassfelt skjema	Disiplin ARK Tegn. / Kontr. JK / RR
Tegningsnr. 18429-A-00-SK-200-006	Revisjon Status