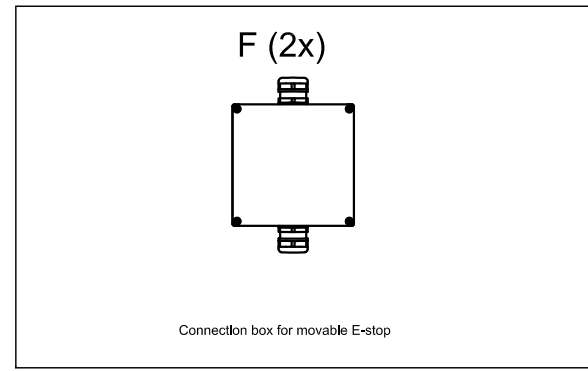
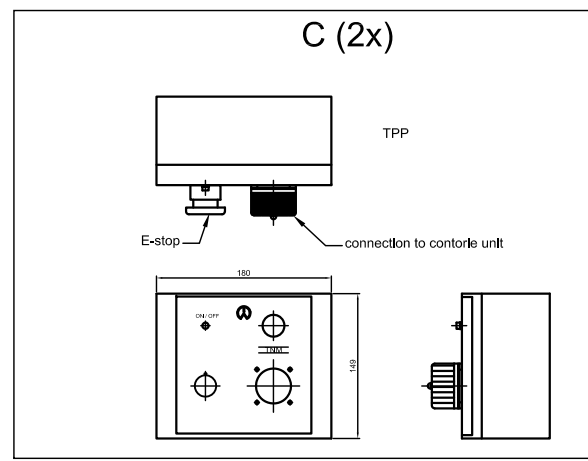
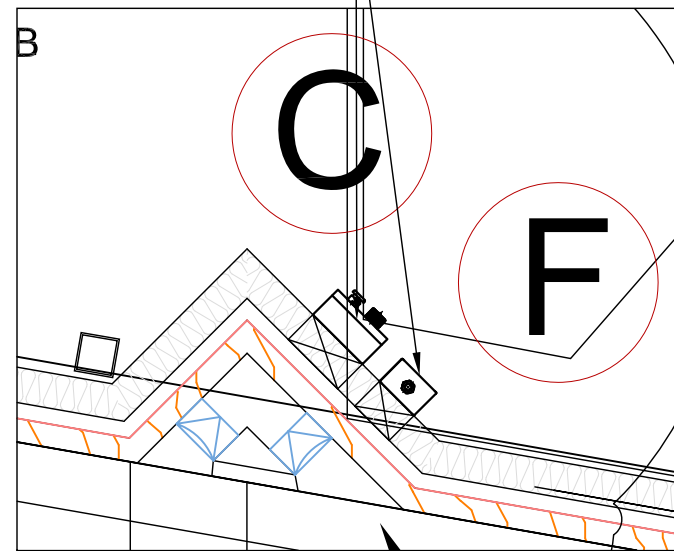
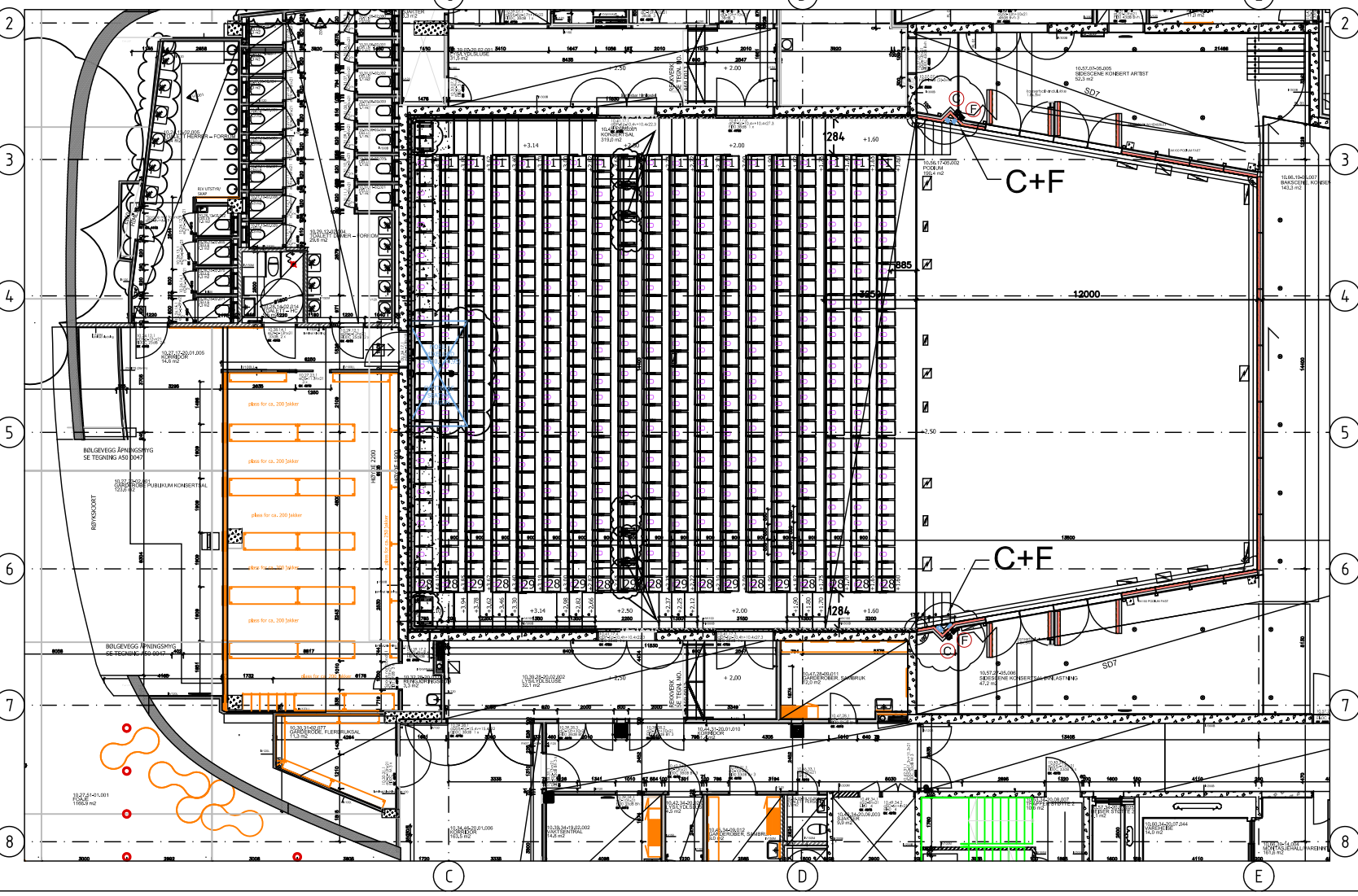
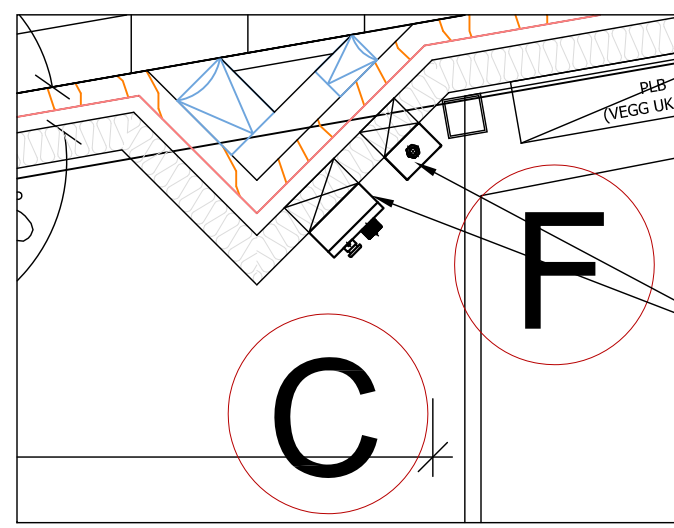
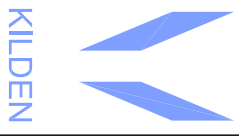

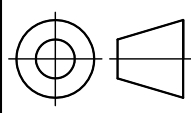


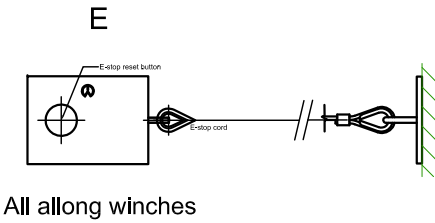
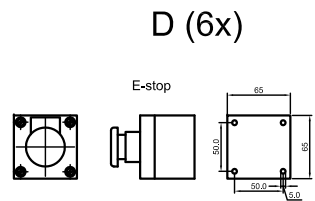
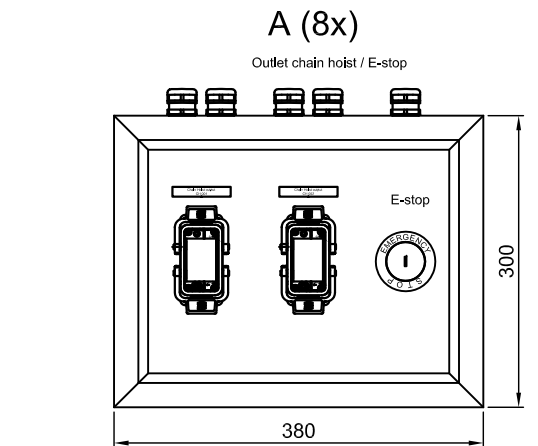
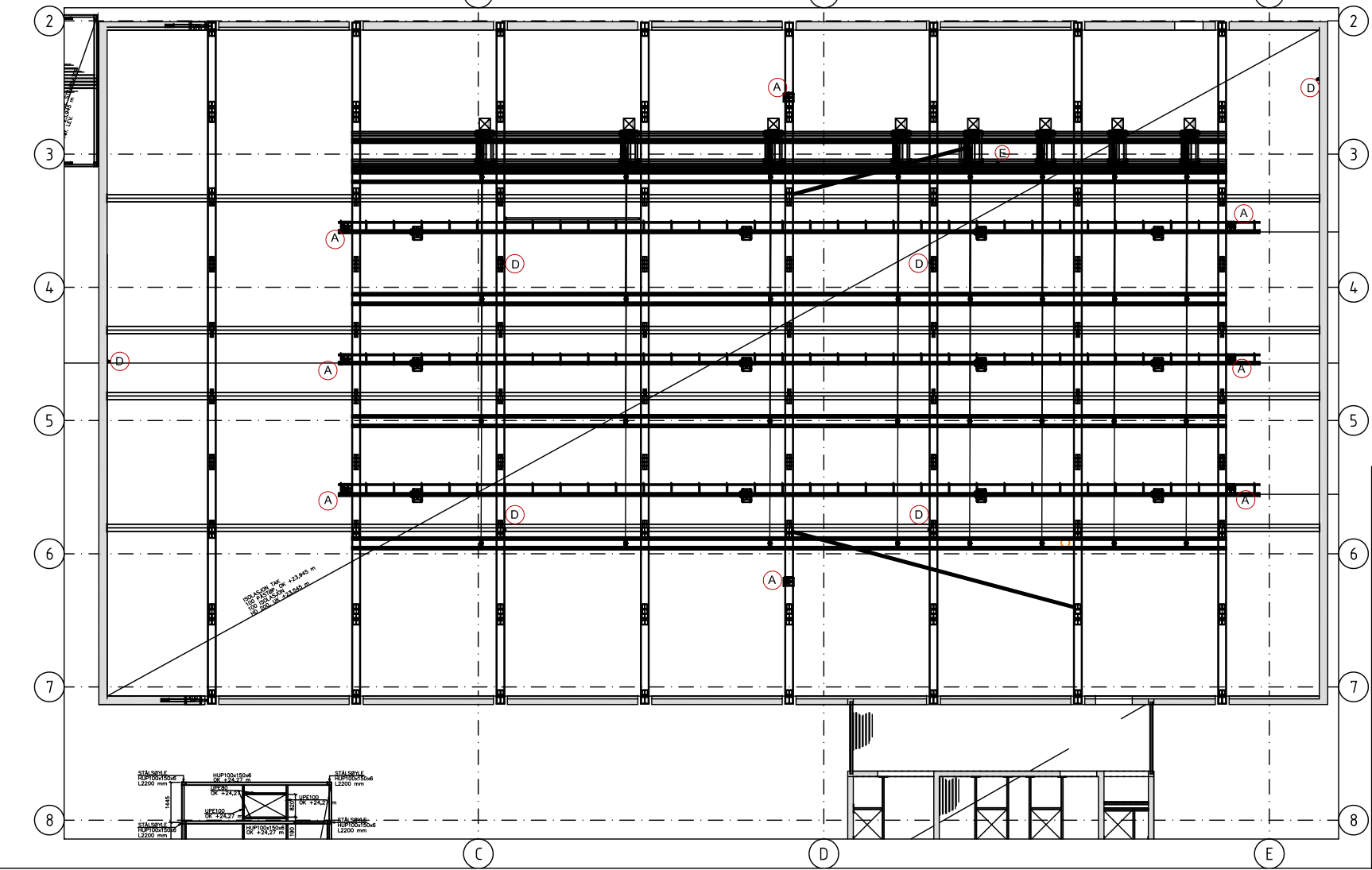
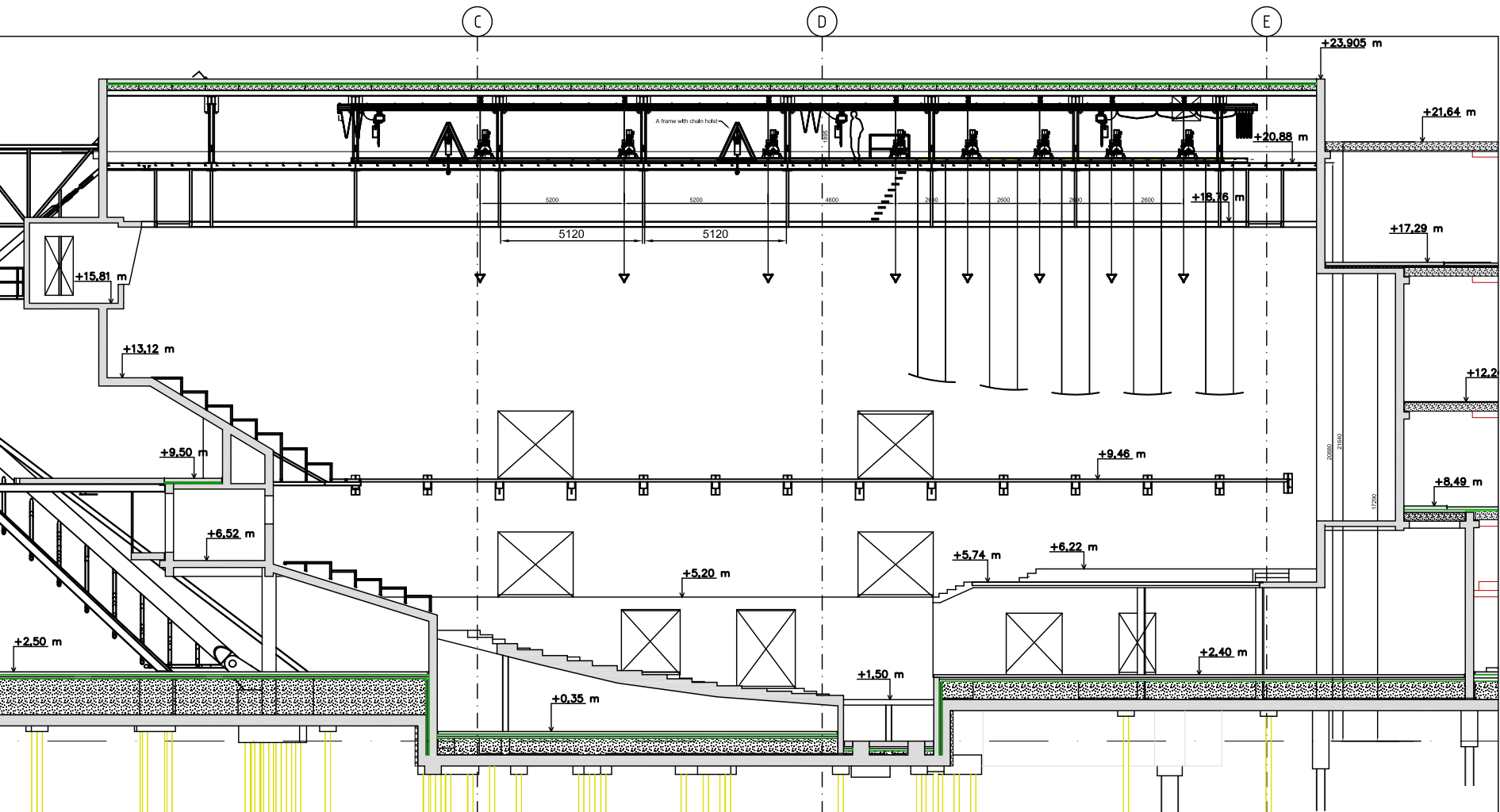
Bakje tegen muur

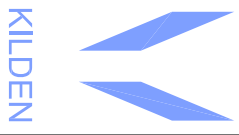

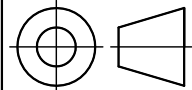


Bakje tegen muur



Item	Qty.	Dwg. no.	Description	Remarks	DIN no. / Sheet size
Scale		1:100 / 1:20 / 1:8	Date	Remarks :	
originally drawn		EK / ST	20-11-2009	.	
Drawn		EK / ST	04-03-2010	.	
Released		.	.	Finish : .	
Unless otherwise specified : Dimensions in mm.			Tolerances according to : NEN-ISO 2768 mK NEN-ISO 13920 DIN 6930		
description: Position point hoist outlet - chain hoist outlet + 2.40 (Toneel stage)				dwg no: TW61-01_072	
			projektion:	client:	A3
• Trekwerk bv • Nijverheidslaan 3 • 1382 LE • Weesp • Netherlands • • t: +31 294 238 630 • f: +31 294 413 921 • support@trekwerk.com • trekwerk.com •				KILDEN Kristiansand	



Item	Qty.	Dwg. no.	Description	Remarks	DIN no. / Sheet size
Scale	1:100 / 1:8		Date	Remarks :	
originally drawn	EK / ST		20-11-2009	.	
Drawn	EK / ST		25-01-2010	.	
Released	.		.	Finish : .	
Unless otherwise specified : Dimensions in mm.			Tolerances according to : NEN-ISO 2768 mK NEN-ISO 13920 DIN 6930		
description: Position point hoist outlet - chain hoist outlet Level 5, + 20.88 (Fly loft)				dwg no: TW61-05_072	
 • Trekwerk bv • Nijverheidslaan 3 • 1382 LE • Weesp • Netherlands • • t: +31 294 238 630 • f: +31 294 413 921 • support@trekwerk.com • trekwerk.com •			projektion: 	client: KILDEN Kristiansand	A3