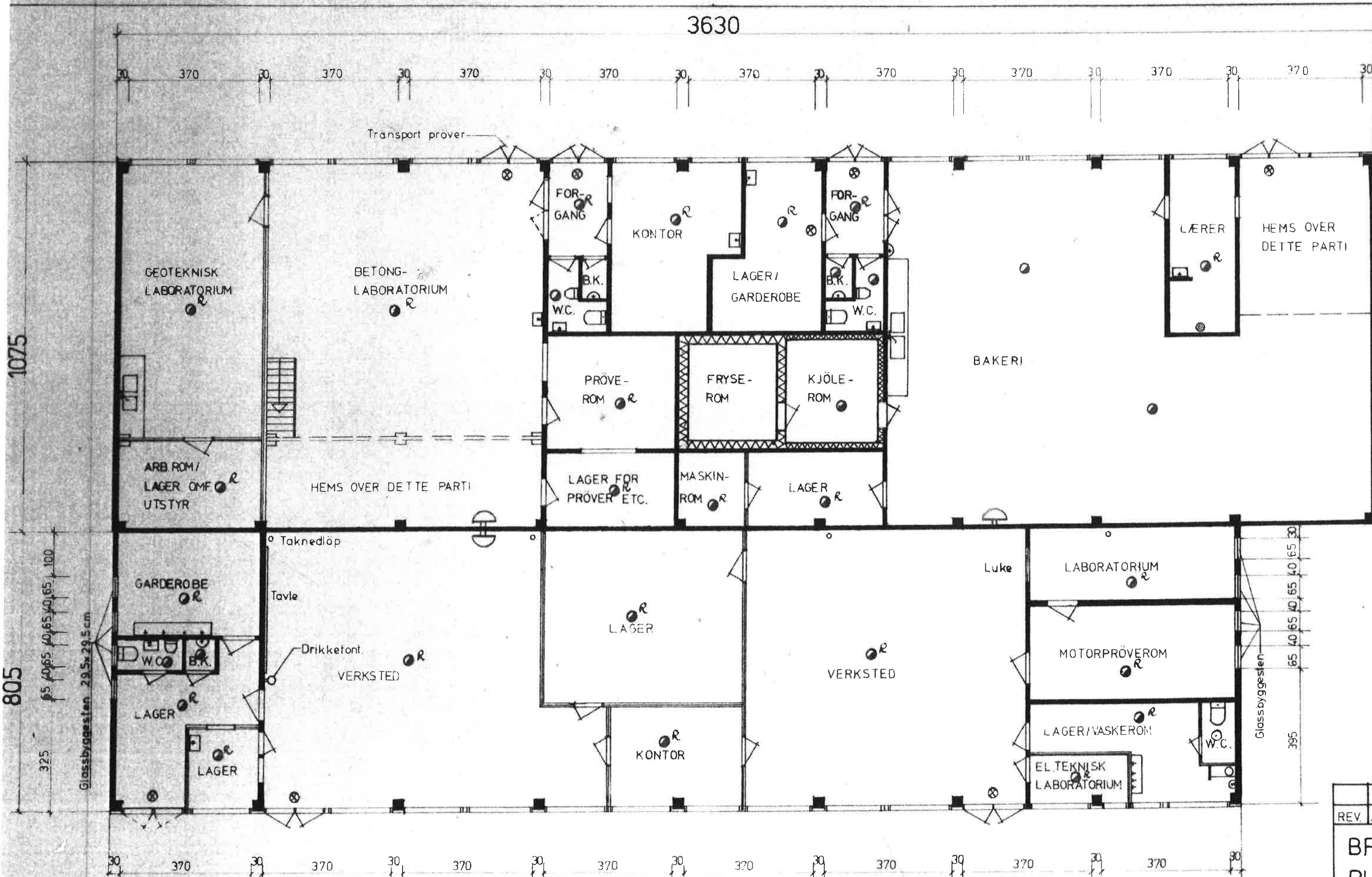




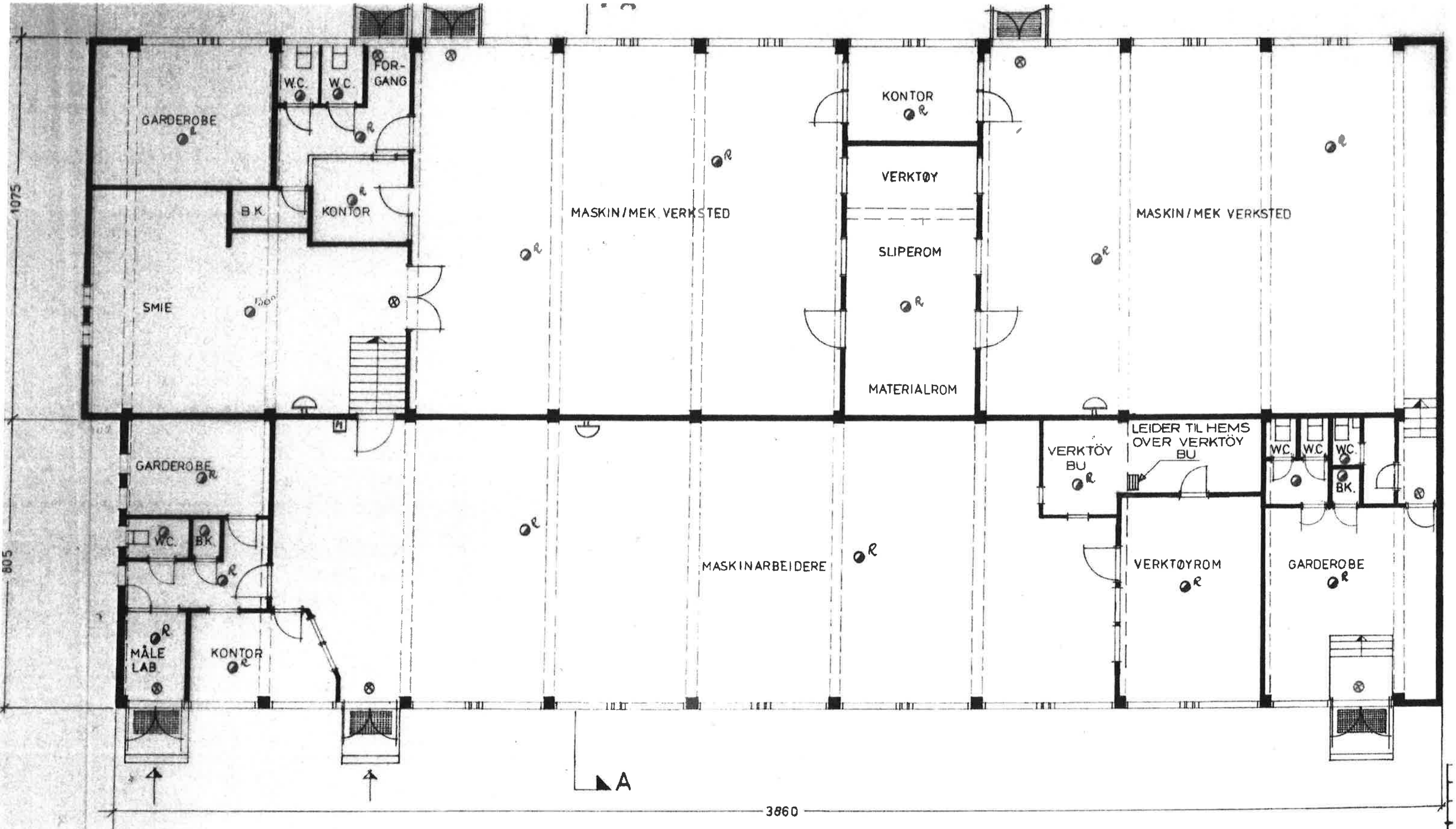
Blokk 1



REV.	ANT.

BREIVII  
PLAN I  
ORDR

3230



1075

805

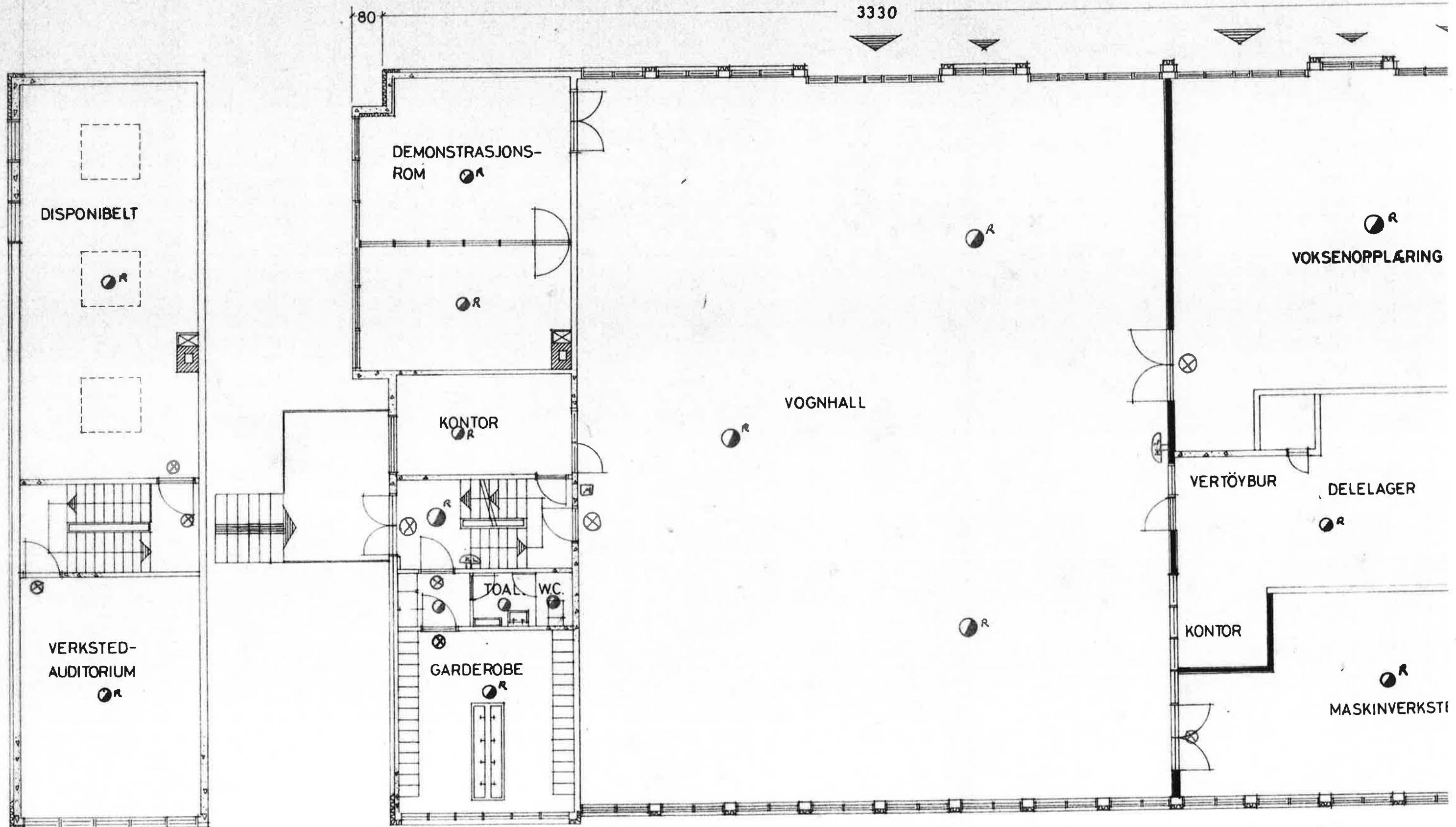
3860

A

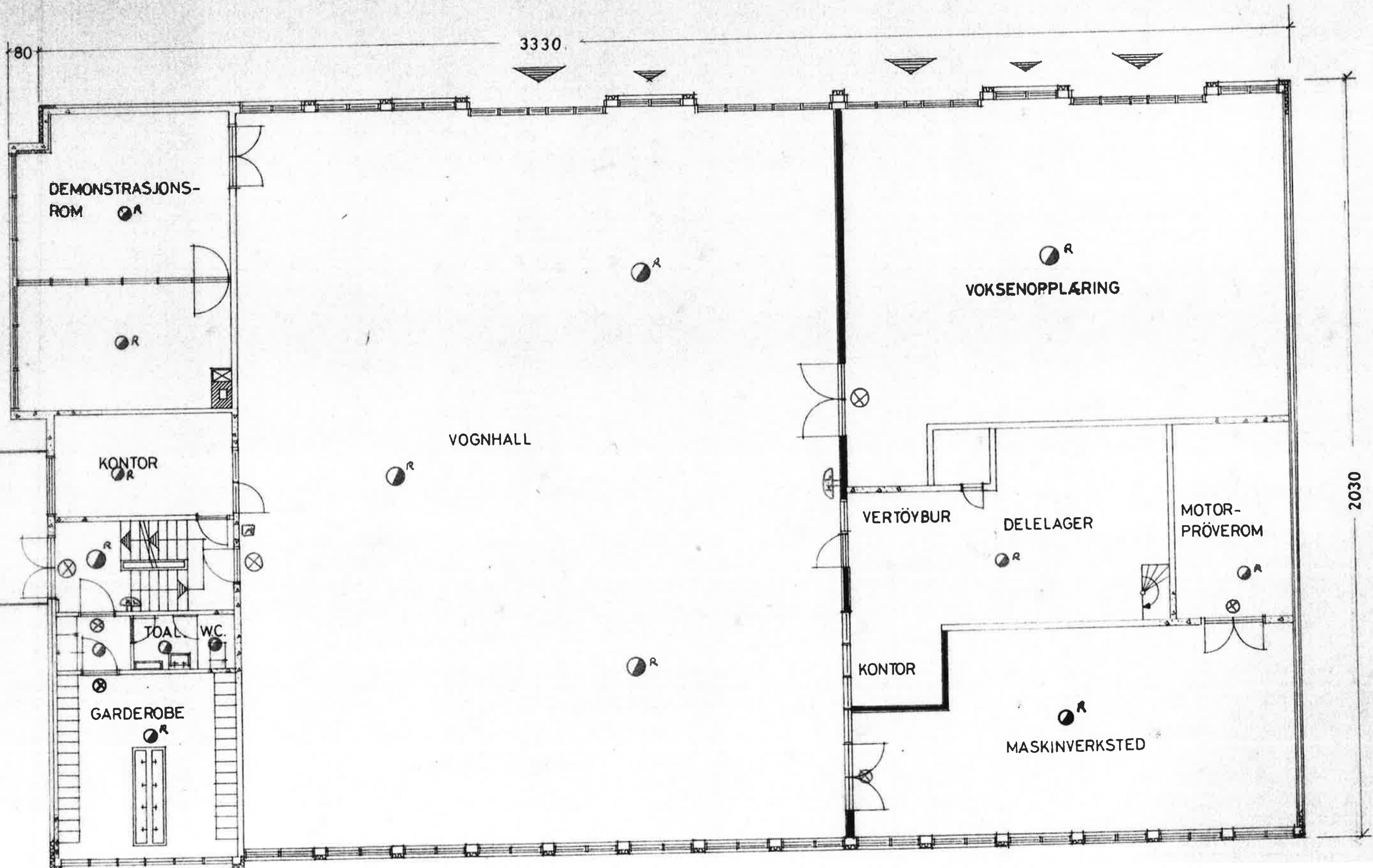
Blakk 2-

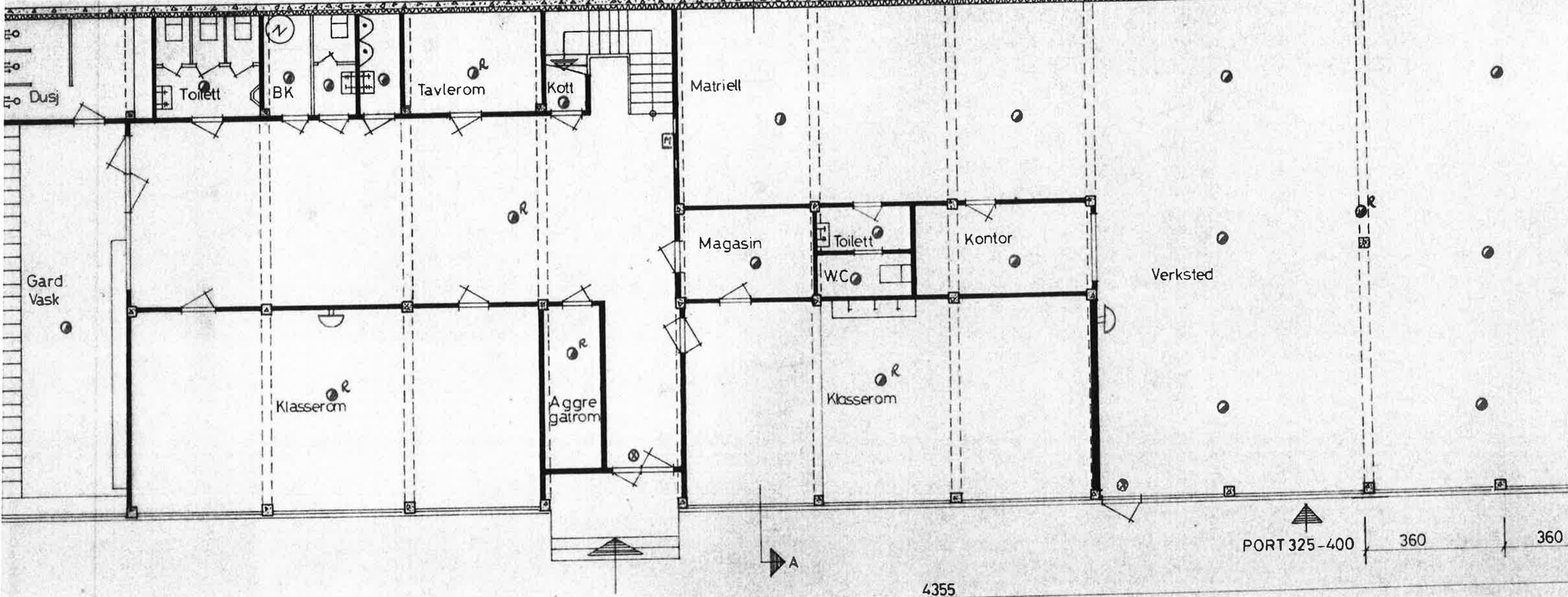


Blokk 3 - Del I - Plan



Blukk 3 - Del II - Plan





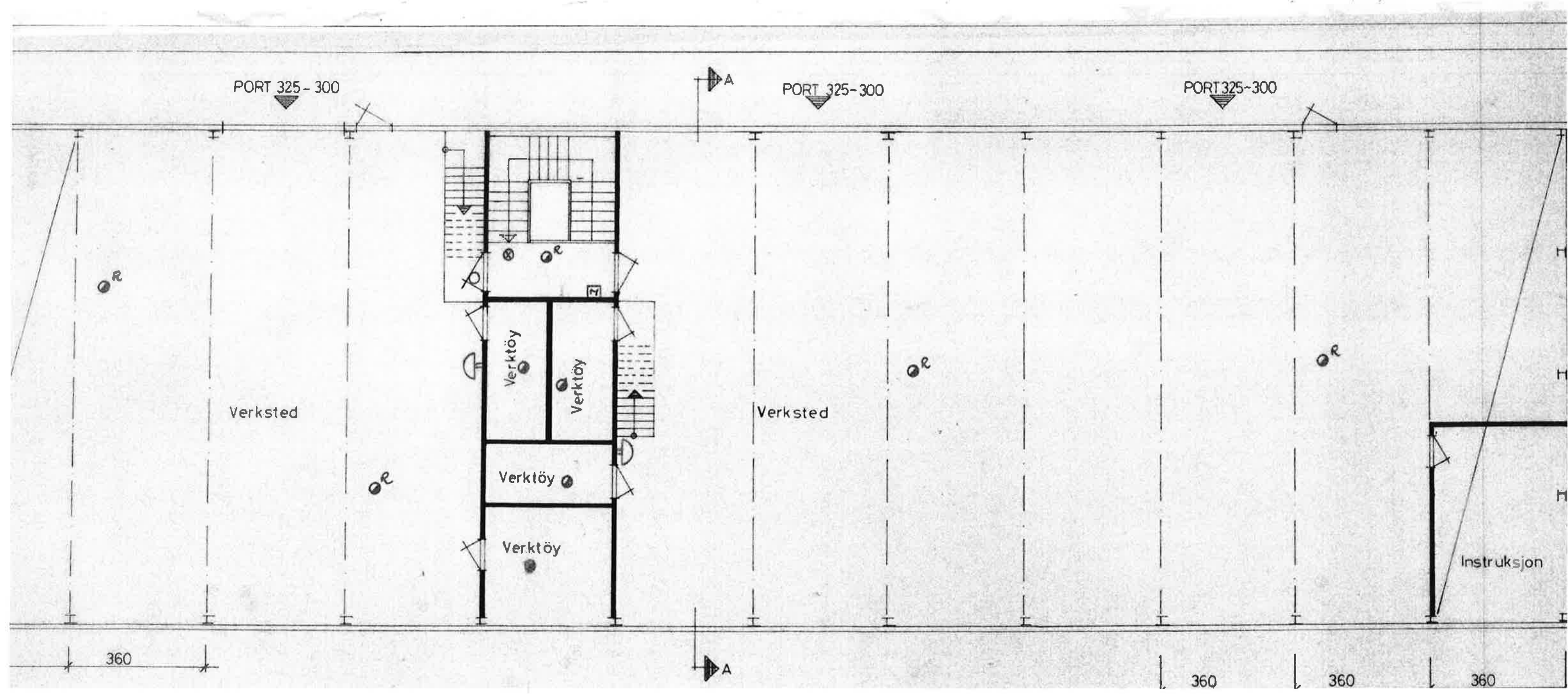
PLAN UNDERERETASJE.

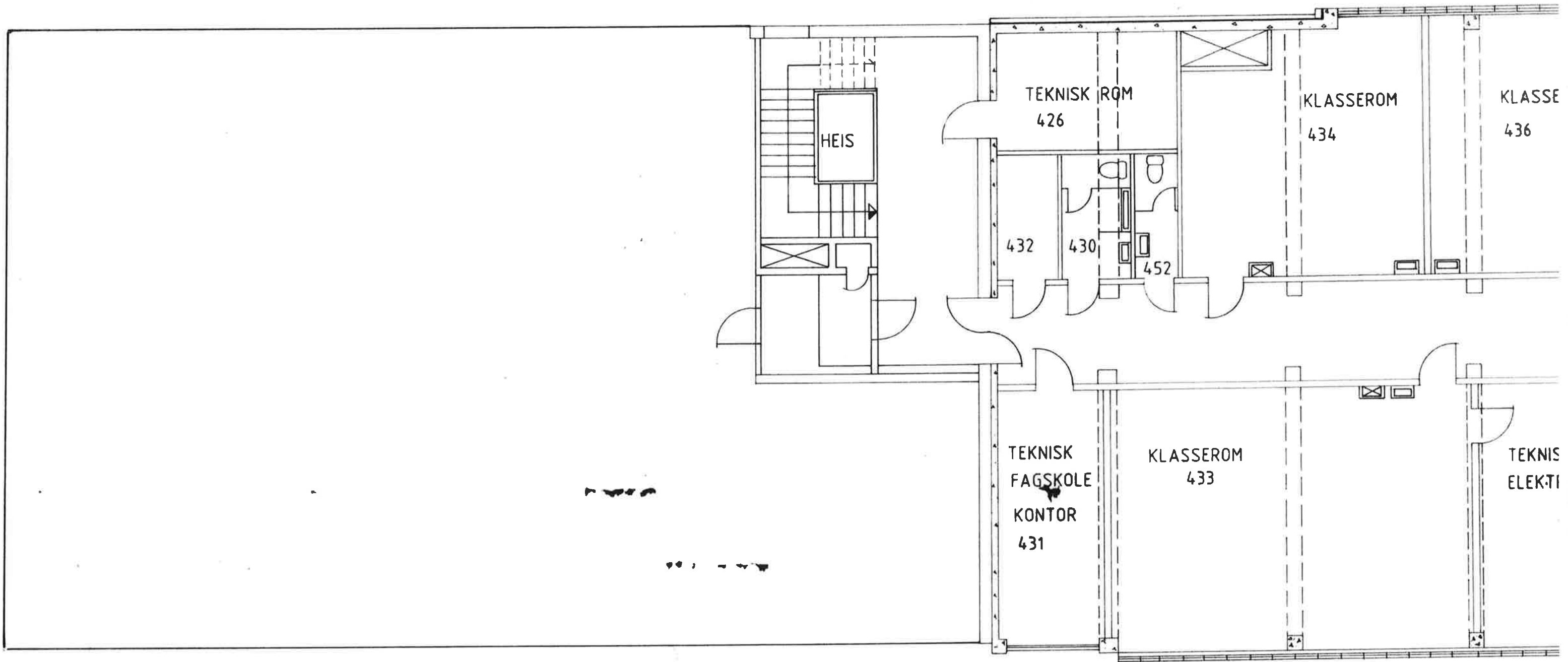
Blokk 5

Rev	Ant.	Revi
VOKSENOPP		
PLANER		
OPPMÅLING		
Mål: 1:100		
BREIVIKA VIC		



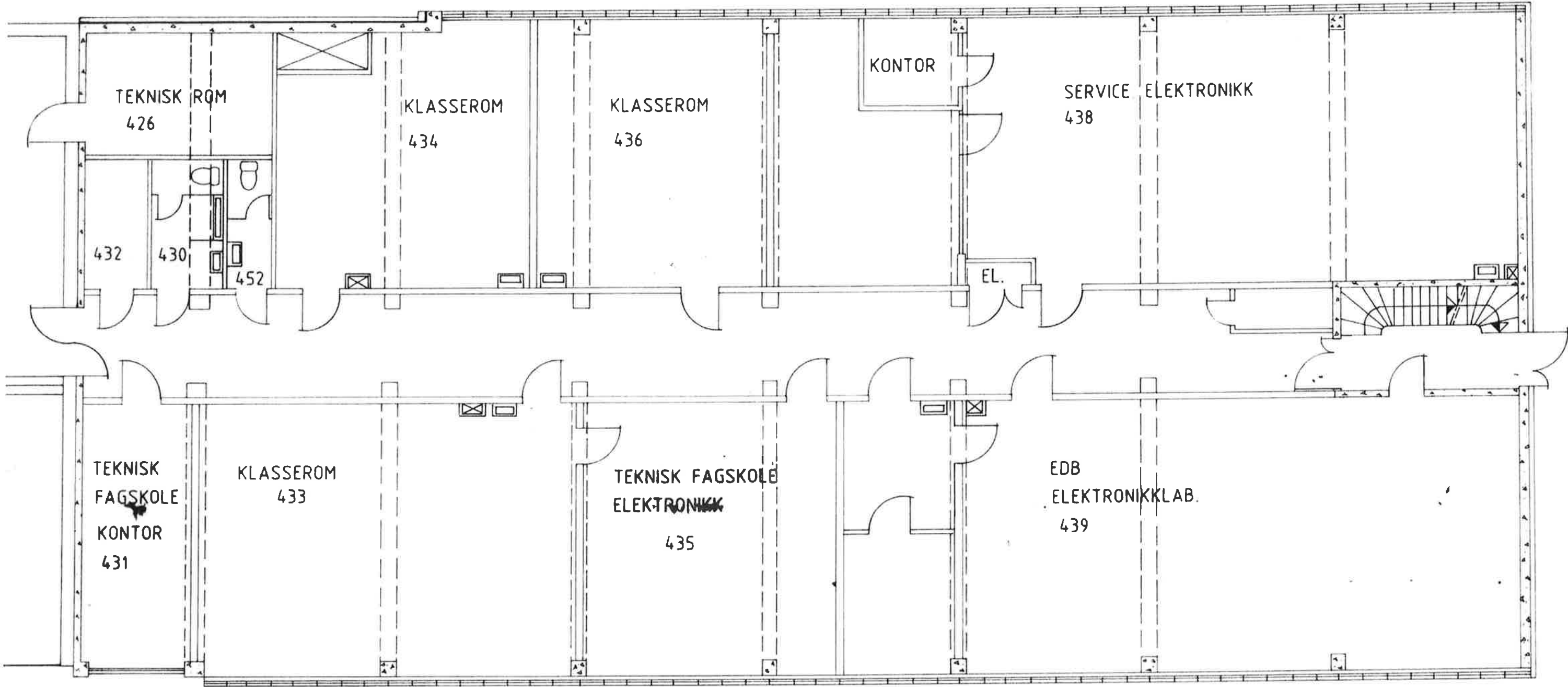
Blokk S - Plan 1 etg.





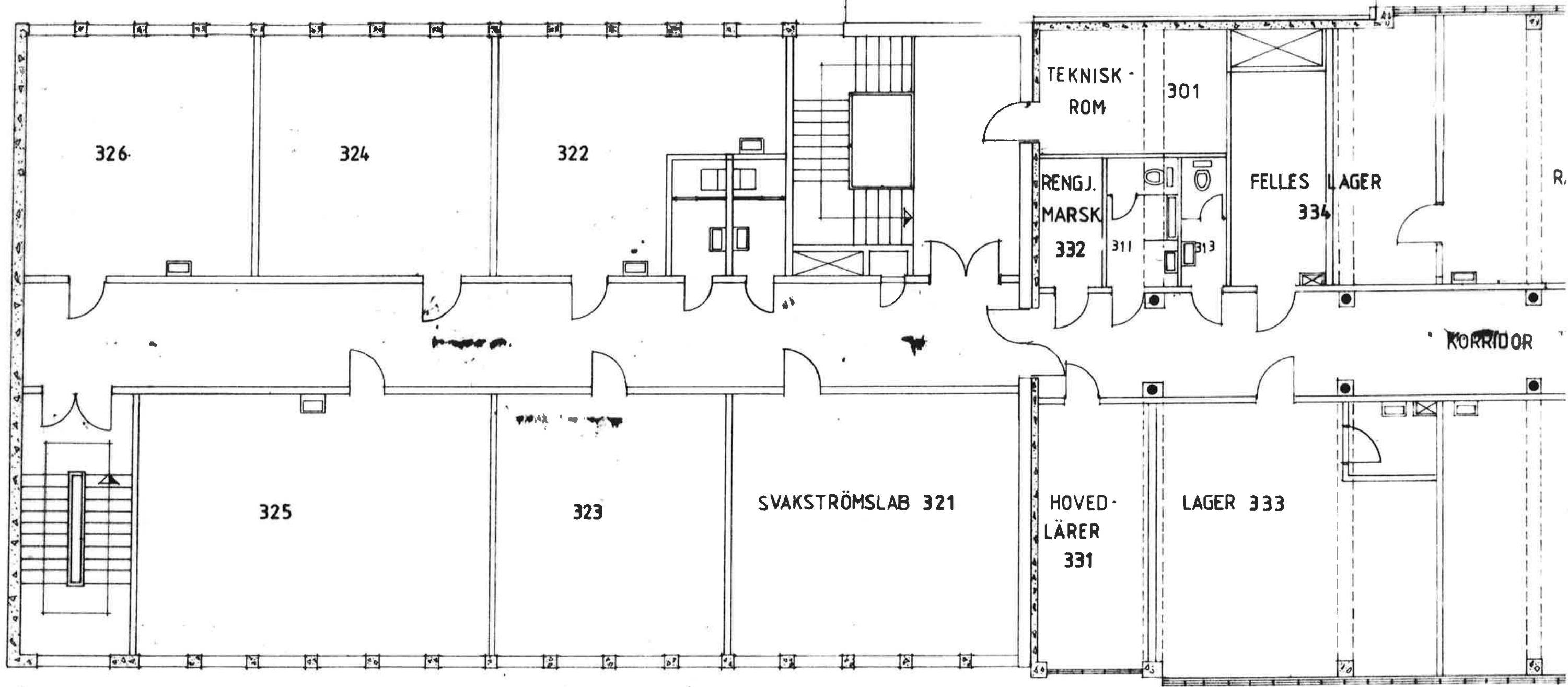
Fløy B - 4. etg - Del I



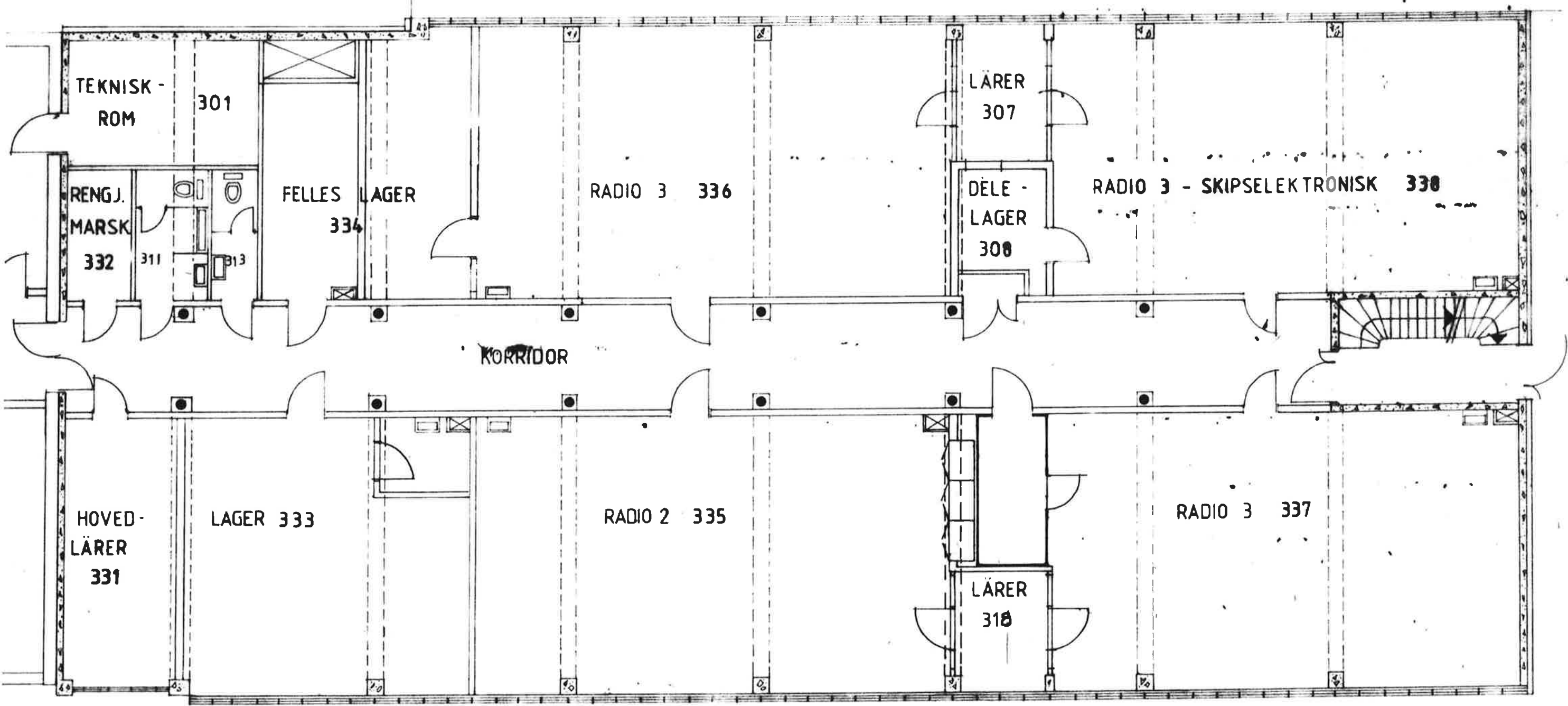


Del II

		OPPMÅLINGSTEGNING REVIDERT	
REV	ANT	REVIDERINGEN GJELDER	
<b>BREIVIKA VIDEREGÅENDE SKOLE</b> <b>PLAN 4.ETASJE FLØY B OPPM.TEGN.</b> <b>MÅL 1:100</b>			DATO SIGN SAK



Flooy B - 3. etg - Del I



Del II

		OPPMÅLINGSTEGNING REVIDERT
		OPPMÅLINGSTEGNING REVIDERT
		REVIDERT
REV	ANT	REVIDERINGEN GJELDER
BREIVIKA VIDEREGÅENDE SKOLE -		Dato 1
PLAN 3. ETASJË FLÖY B		Sign
OPPM TEGN		Sak nr



Flooy B 2 etg - Del I

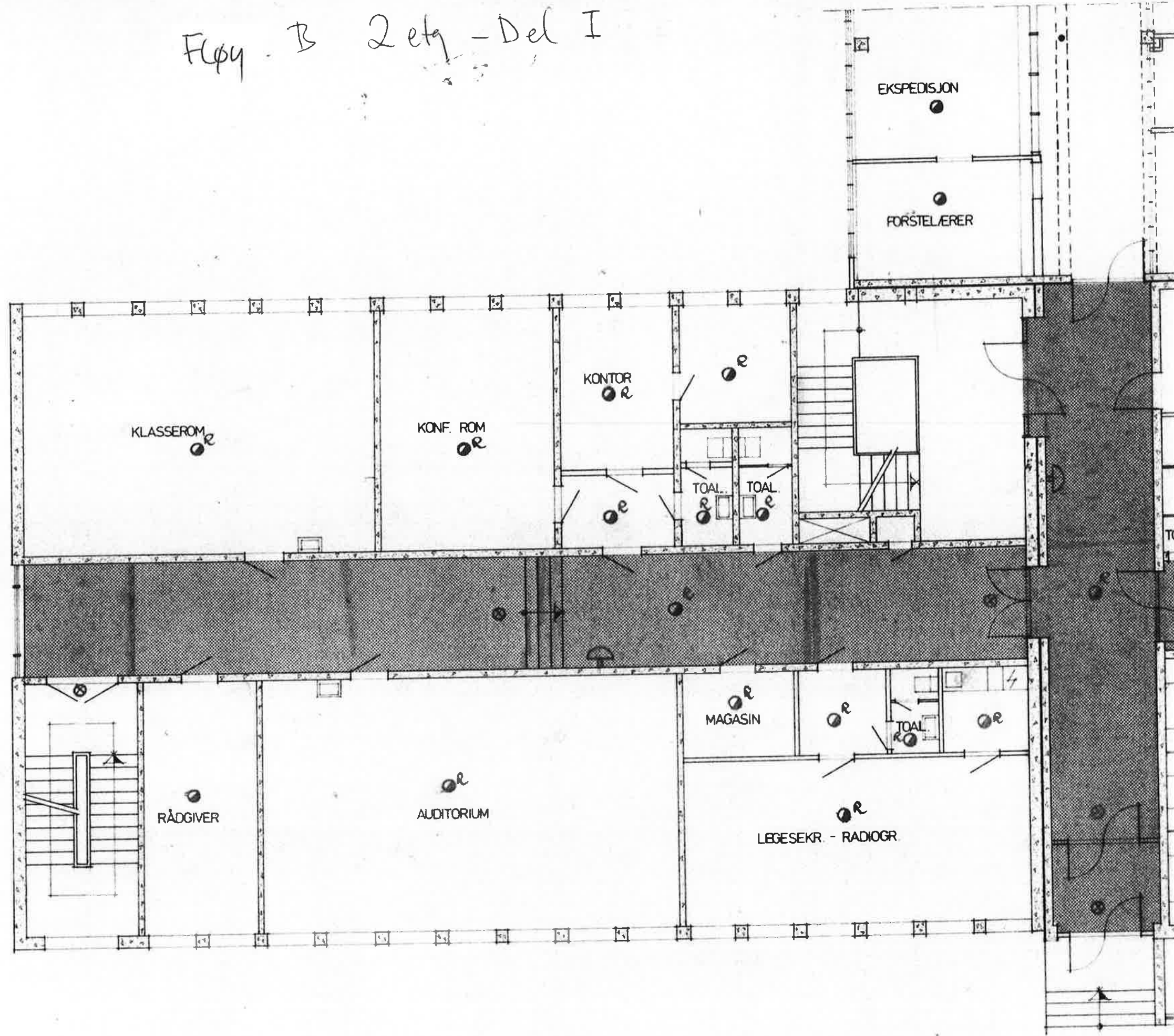
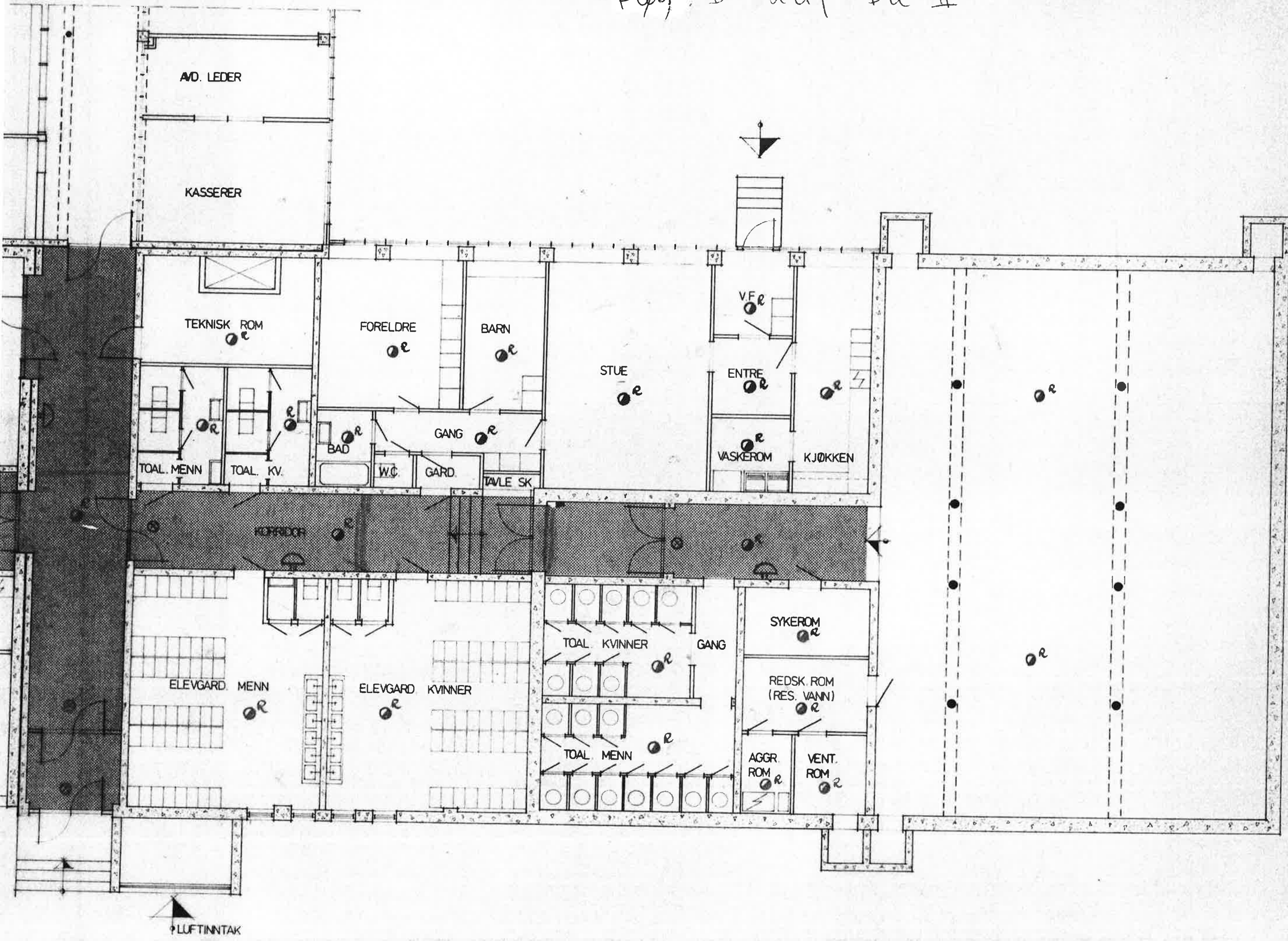
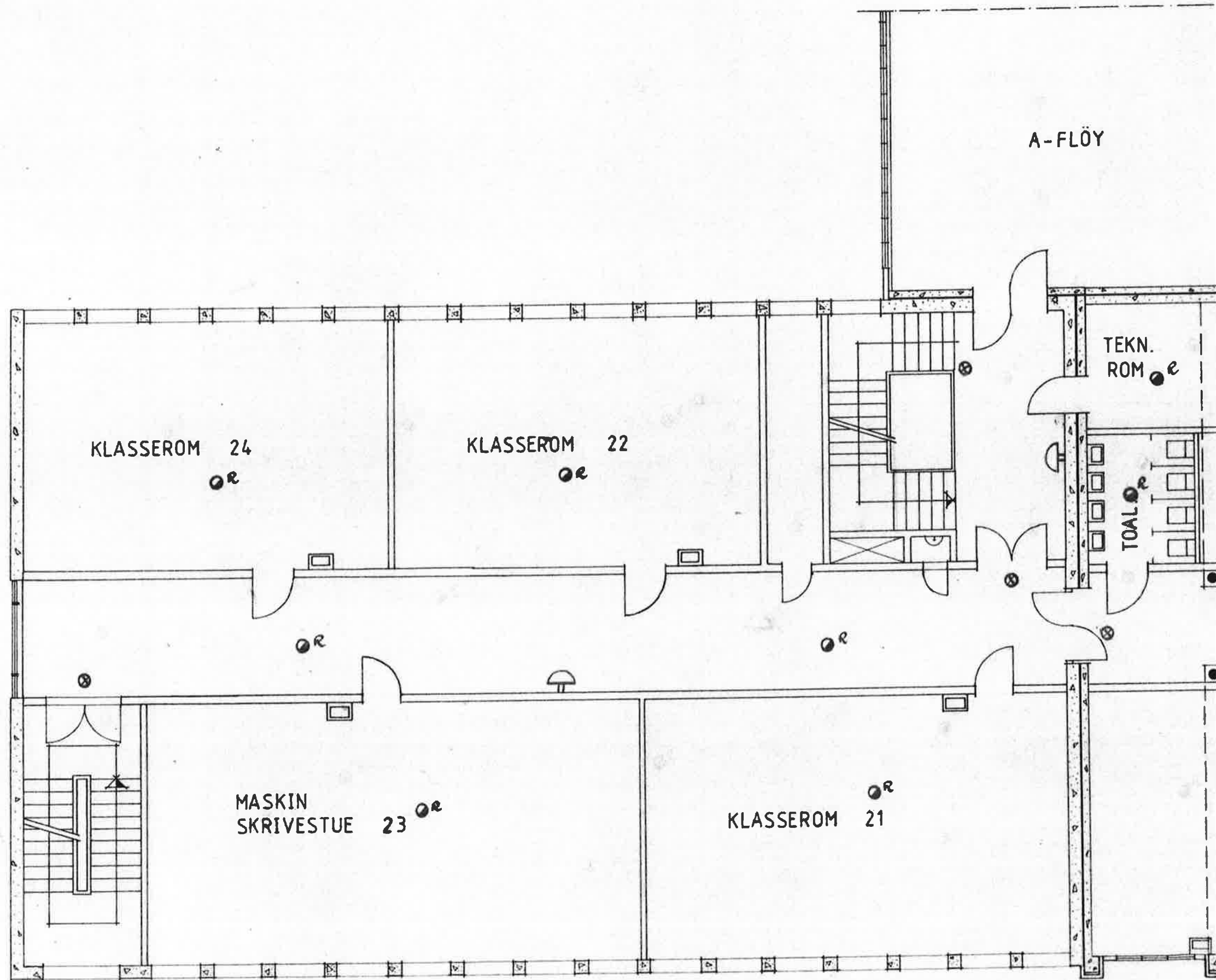


Fig. B 2 etg Del II





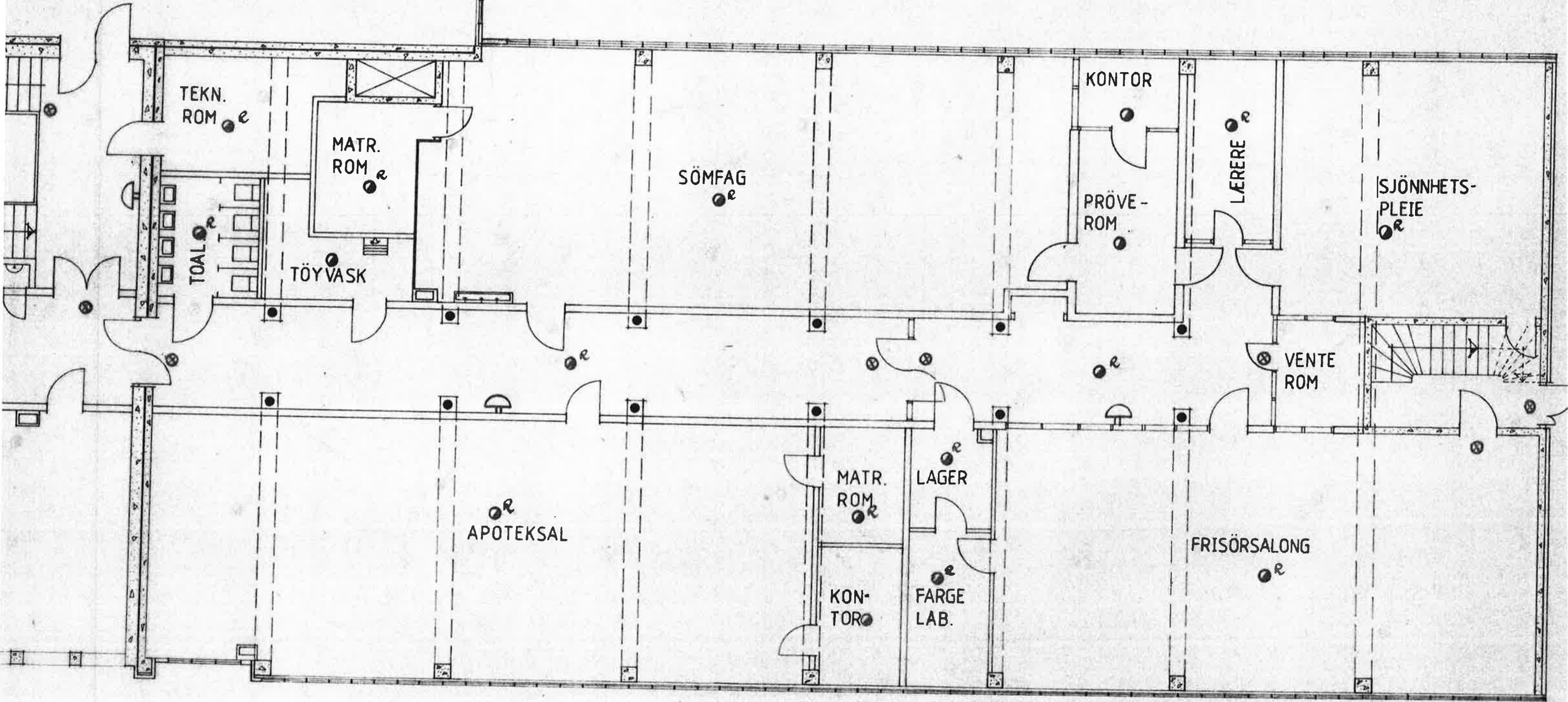
Flöy B 1. etg Del I



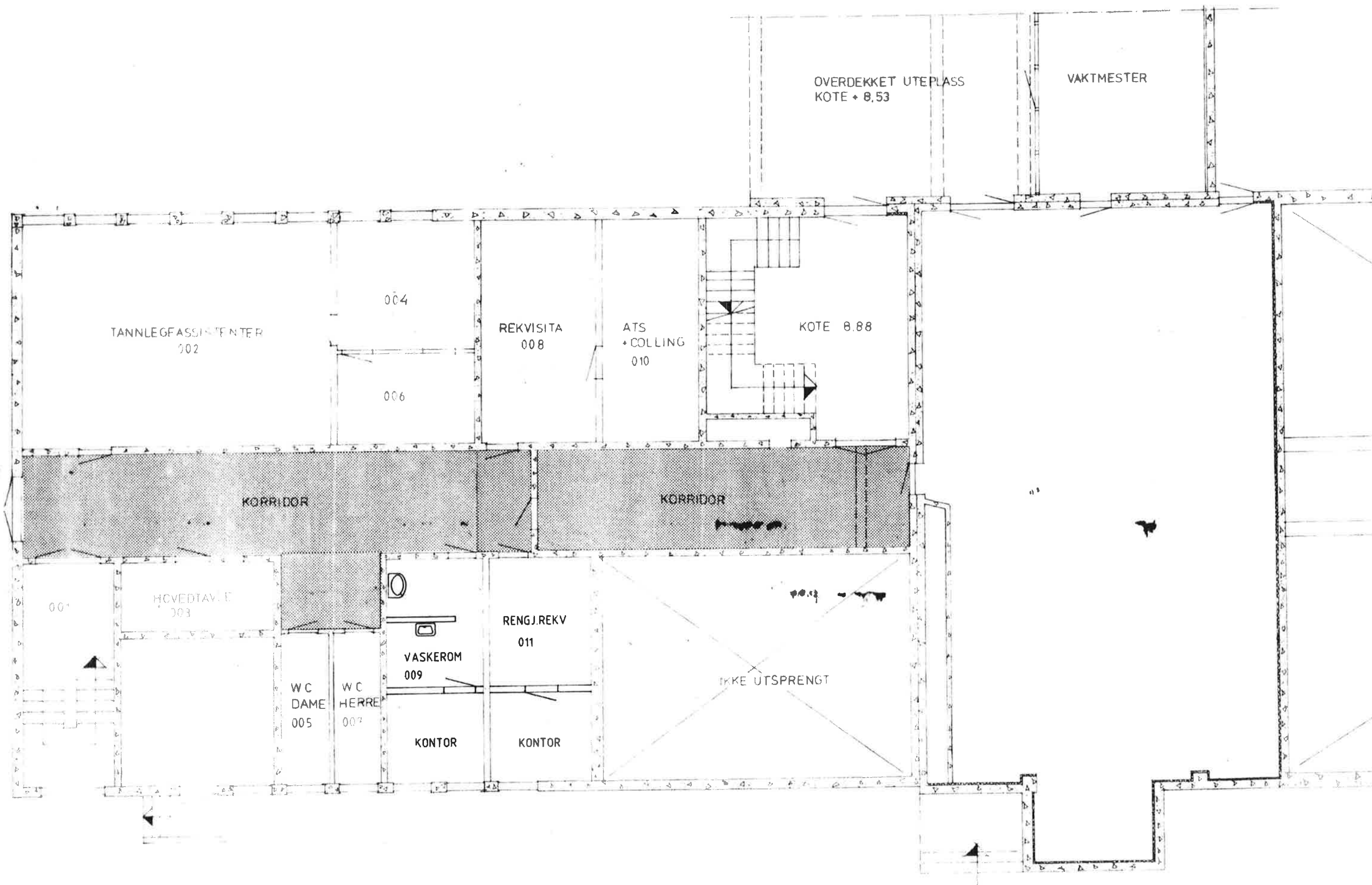


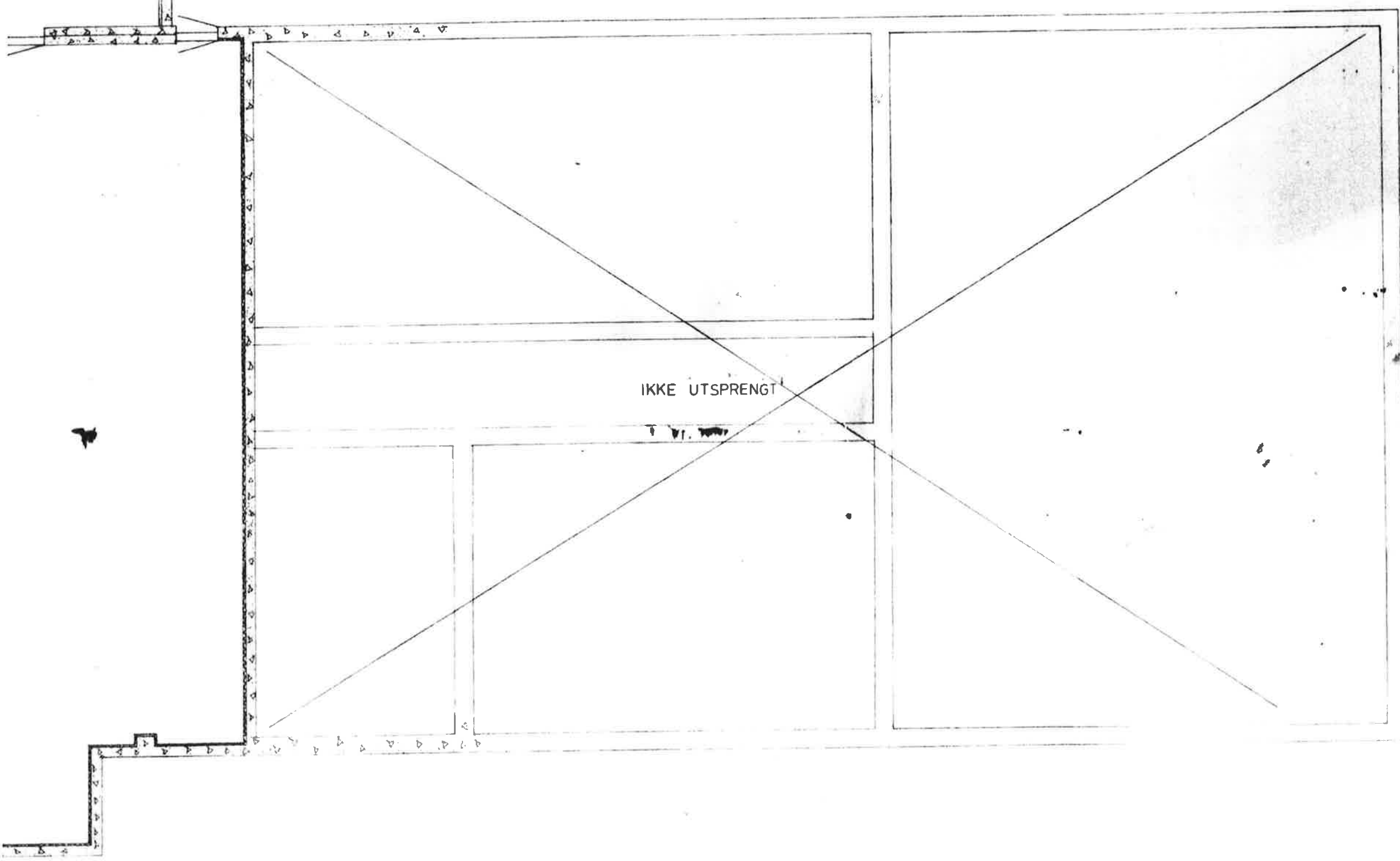
Fløy B - 1 etg Del II

A-FLØY



# Flooy B - Uetq Del I





IKKE UTSPRENGT

V. etg Del II

Rev.	Ant	KONTOR OG VASKEROM (009 - 011) Revideringen gjelder	Date
		BREIVIKA VIDEREGÅENDE SKOLE	Sign
		PLAN UNDERETASJE, FLØY (B)	Sak
		Mål 1:100 OPPMÅLINGSTEGN	Tegn
		BREIVIKA VIDEREGÅENDE SKOLE	