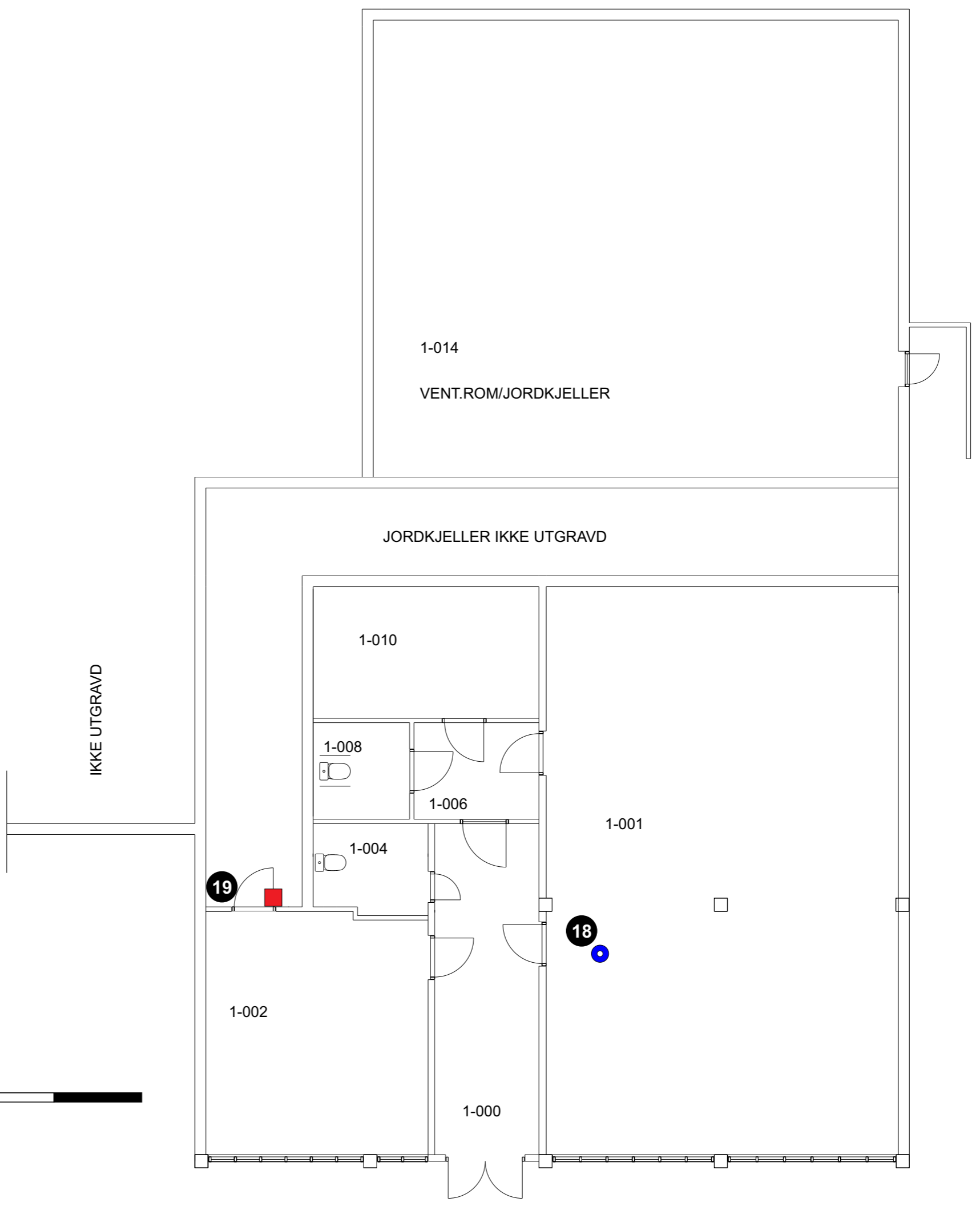
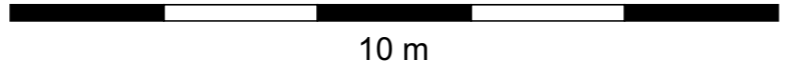
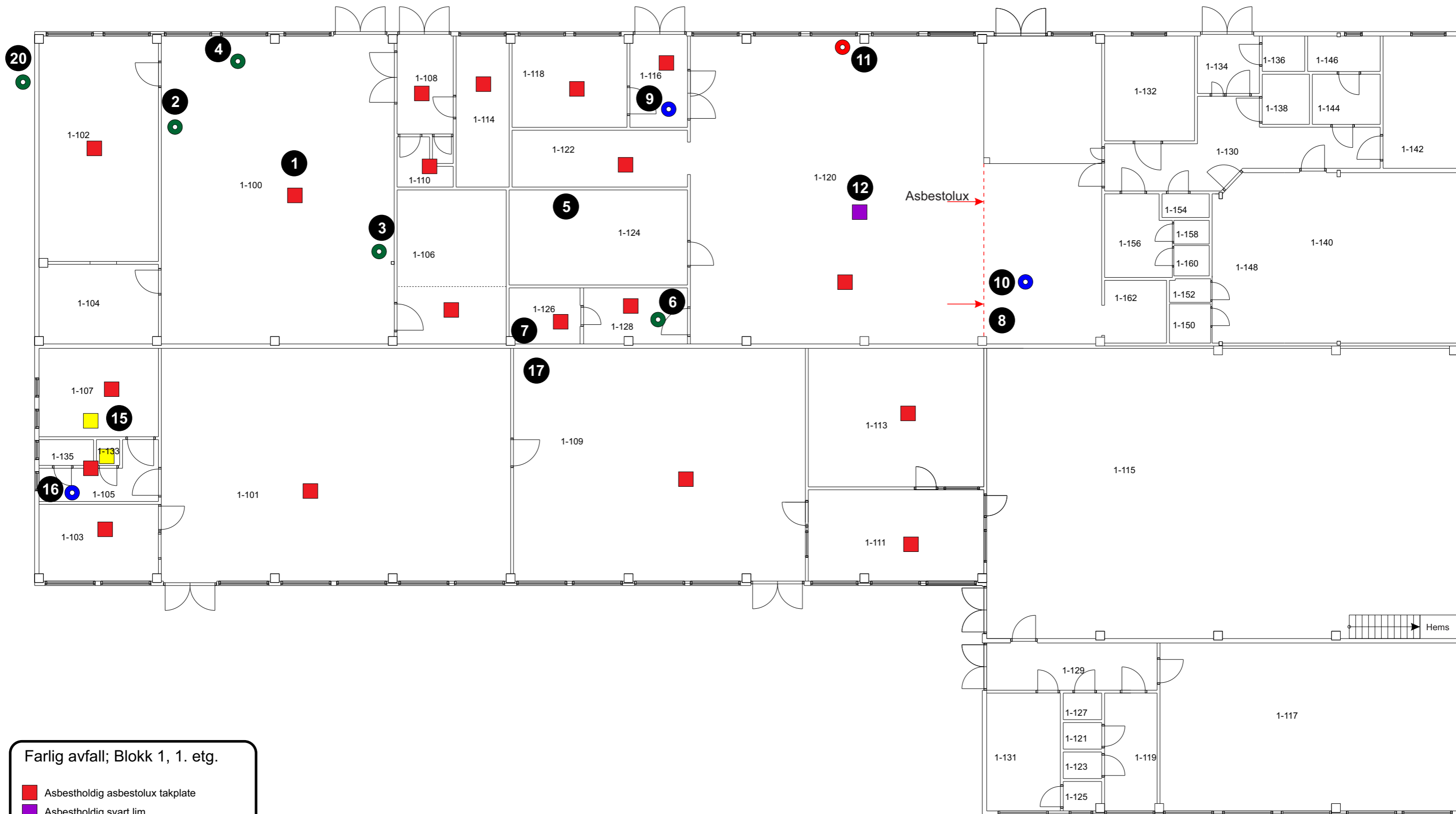


Farlig avfall; Blokk 1, U. etg.

- Asbestholdig pernittplate
- Asbestholdig rørisolasjon
- Asbestholdig fuge/flislim
- Maling med PCB og/eller tungmetaller (lettere forurenset). Bare prøveplass er markert
- Ftalater. Bare prøveplass er markert
- 25 Prøvenummer

SINTEF MOLAB

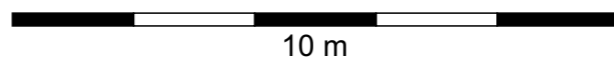




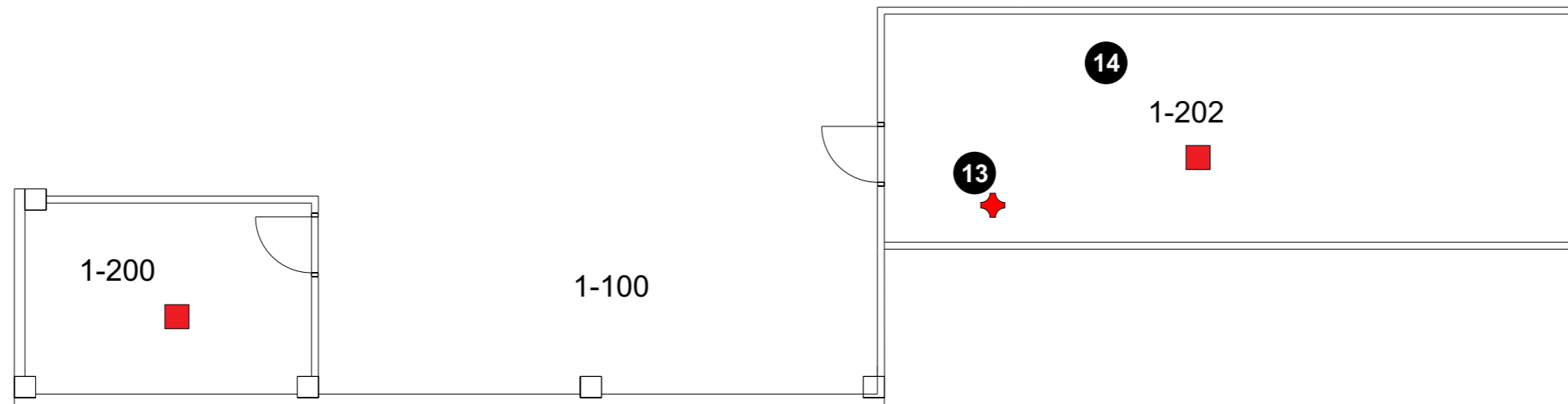
Farlig avfall; Blokk 1, 1. etg.

- Asbestholdig asbestolux takplate
- Asbestholdig svart lim
- Asbestholdig rørisolasjon
- Asbestholdig fuge/flislim
- Maling/belegg med PCB og/eller tungmetaller (lettere forurenset). Bare prøveplass er markert
- Ftalater. Bare prøveplass er markert
- 25 Prøvenummer

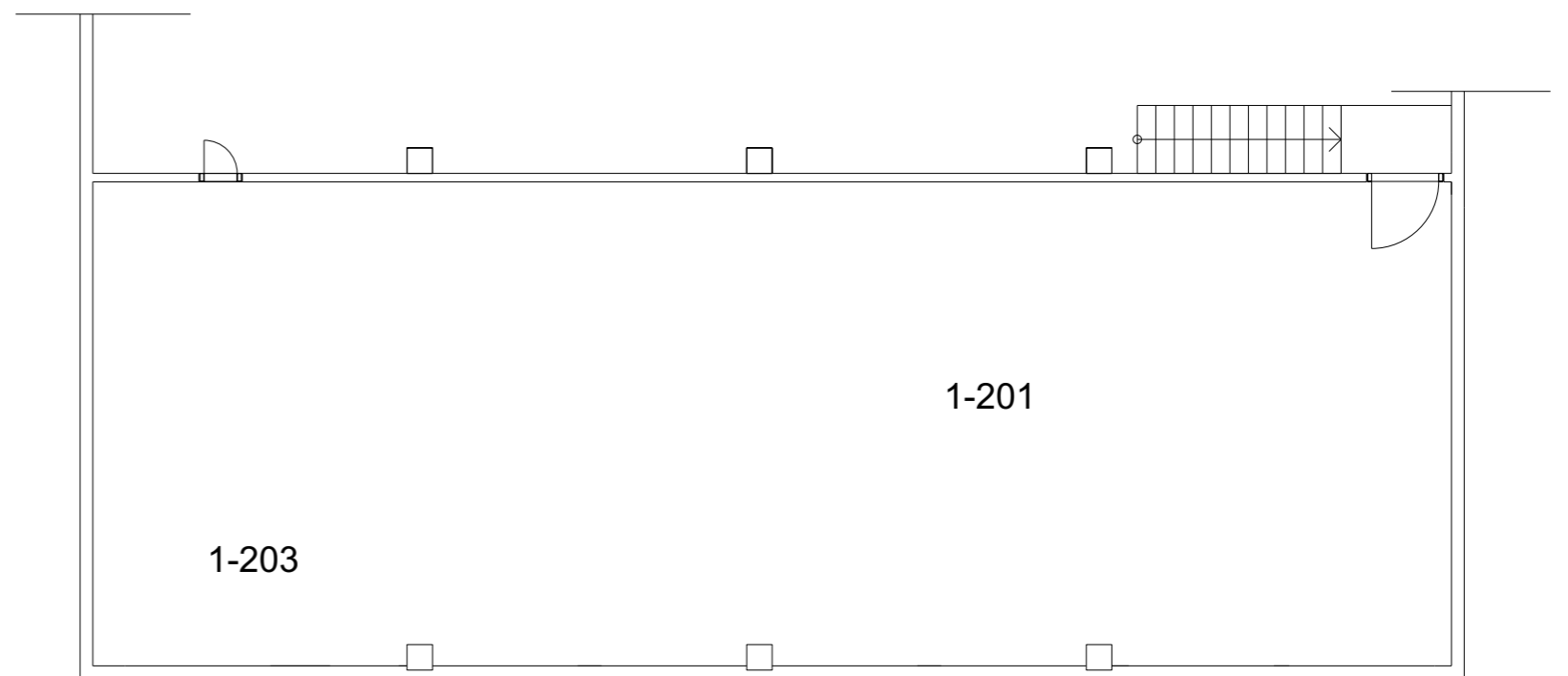
SINTEF MOLAB



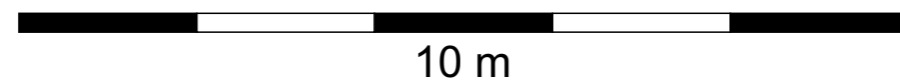
1960 1980



HEMS OVER ROM 1-104 OG 1-106 / 1-124



HEMS OVER ROM 1-117, 1-119 M.FL



Farlig avfall; Blokk 1, Hems.

- Asbestholdig asbestoluxplate
- ✦ Asbestholdig støv
- Asbestholdig fuge/flislim
- Maling med PCB og/eller tungmetaller (lettere forurenset). Bare prøveplass er markert
- Ftalater. Bare prøveplass er markert
- 25 Prøvenummer

SINTEF MOLAB