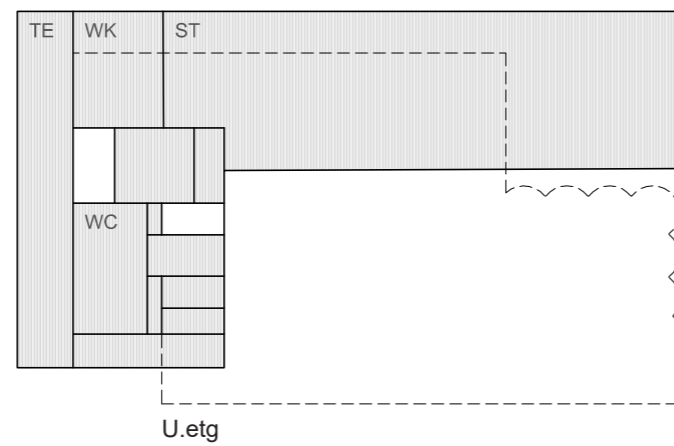
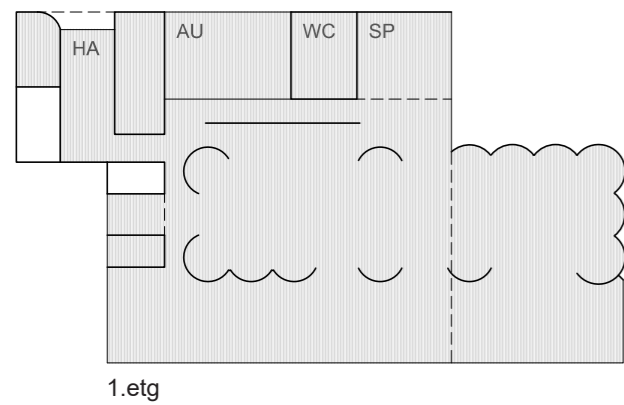
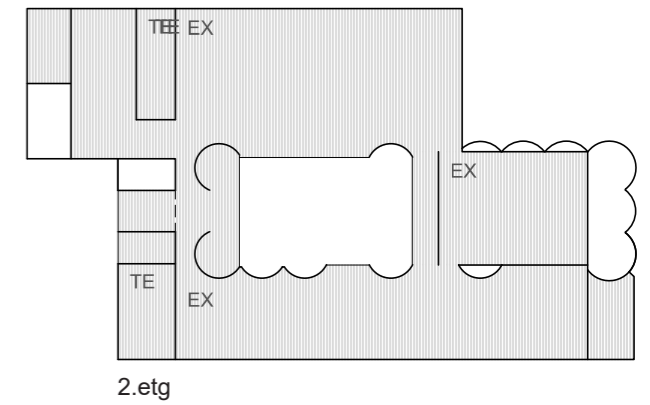
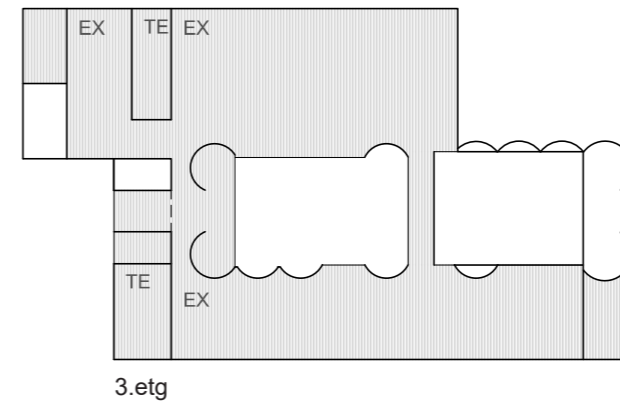
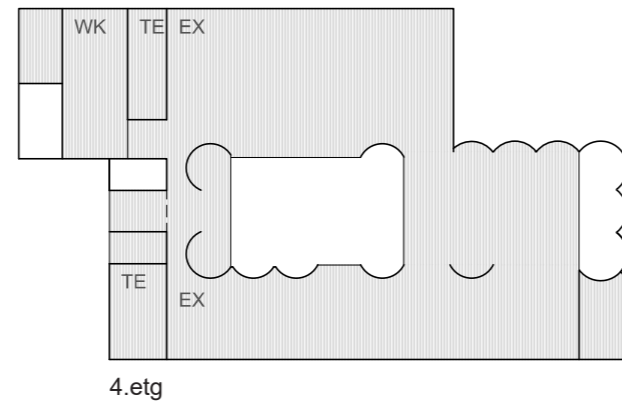
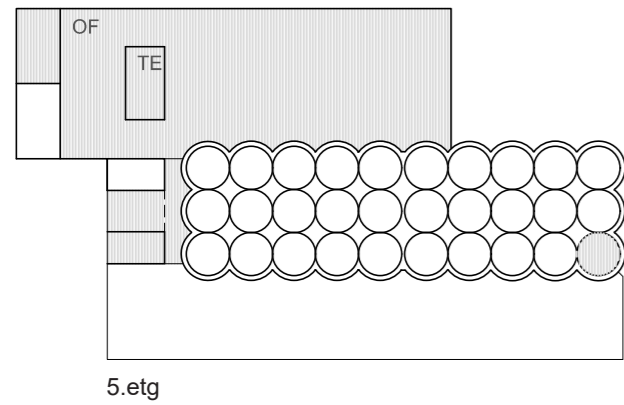
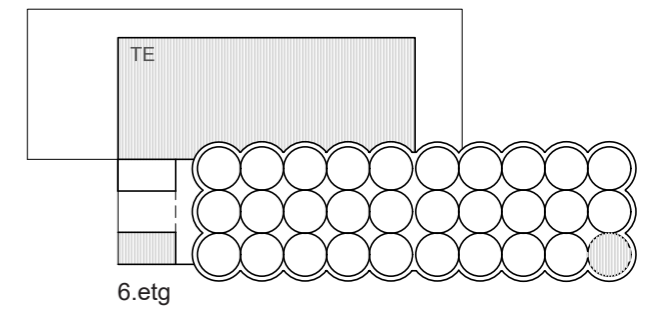
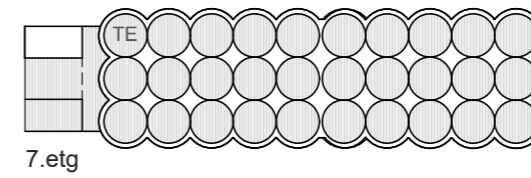
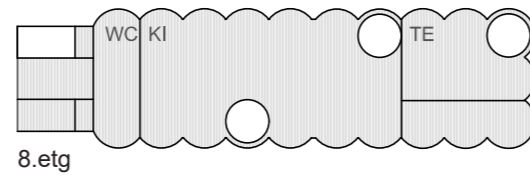
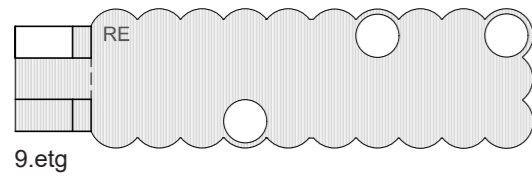
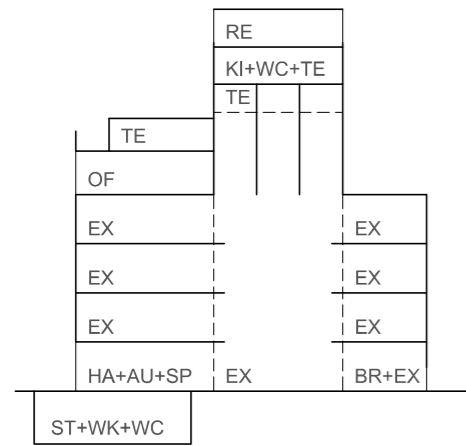


- EX - utstilling-pedagogisk
- ST - lager
- WK - verksted
- SP - butikk
- BR - bar
- RE - restaurant
- KI - kjøkken
- AD - administrasjon
- TE - tekniske rom
- AU - auditorium
- / - tomt



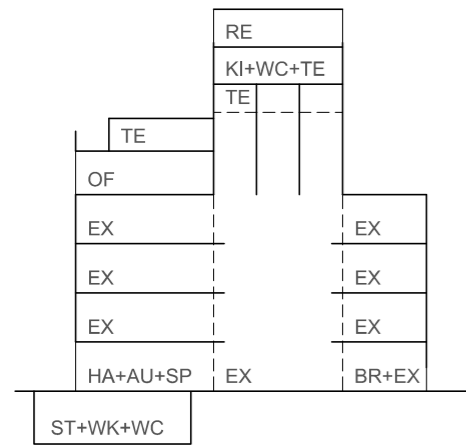
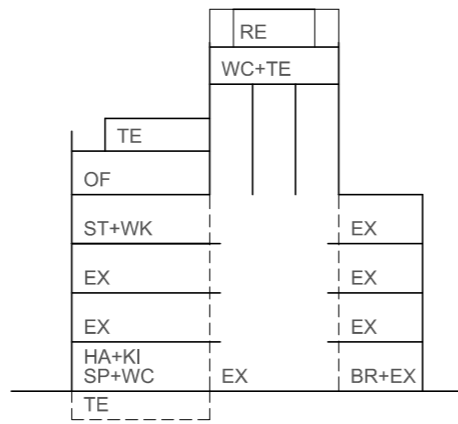


Diagram snitt  
Forprosjekt



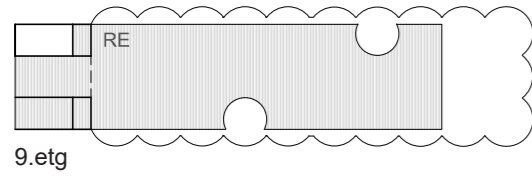
Opsjon

- EX - utstilling-pedagogisk
- ST - lager
- WK - verksted
- SP - butikk
- BR - bar
- RE - restaurant
- KI - kjøkken
- AD - administrasjon
- TE - tekniske rom
- AU - auditorium
- /- tomt

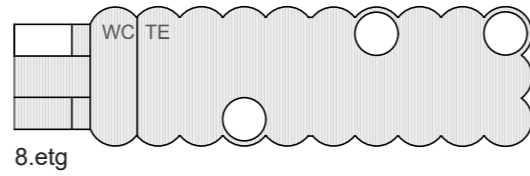
**Reduksjoner:**

U. etg	1300m <sup>2</sup>
9. etg	260m <sup>2</sup>
7. etg (teknisk bro)	650m <sup>2</sup>
<b>Total:</b>	<b>2210m<sup>2</sup></b>

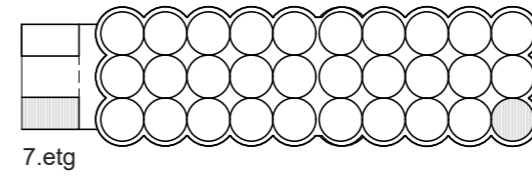
Lager	802->430m <sup>2</sup>
Produksjon kjøkken	290->120m <sup>2</sup>
Utstillinger	4100m <sup>2</sup> ->3760m <sup>2</sup>
Verksted	100->0 (ved konservering 4etg?)
Auditorium	120m <sup>2</sup> ->0 (i utst. eller sambruk)



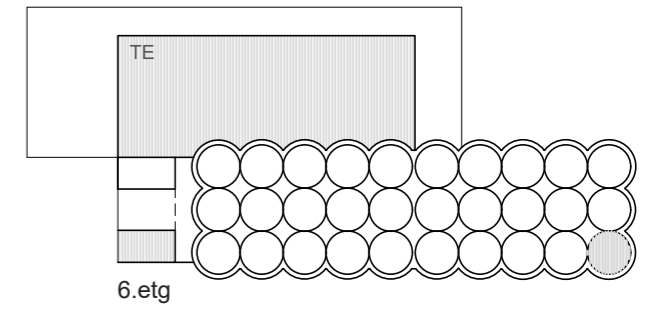
9. etg



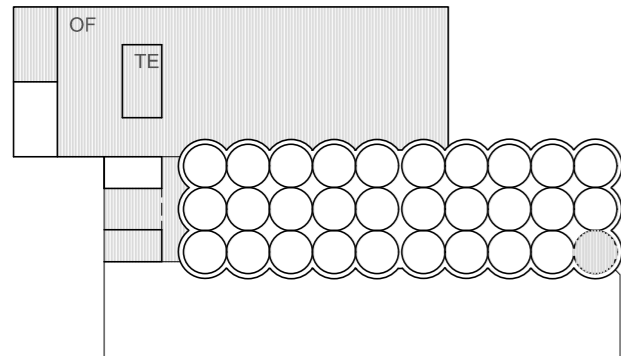
8. etg



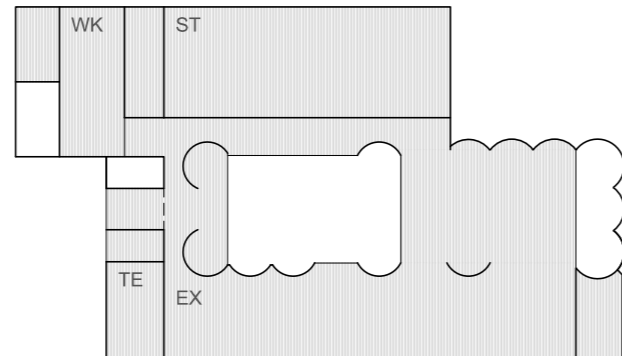
7. etg



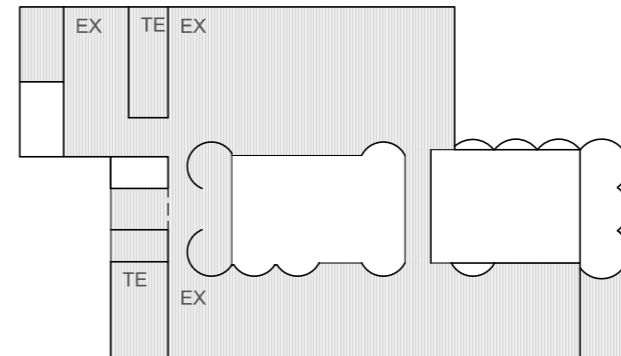
6. etg



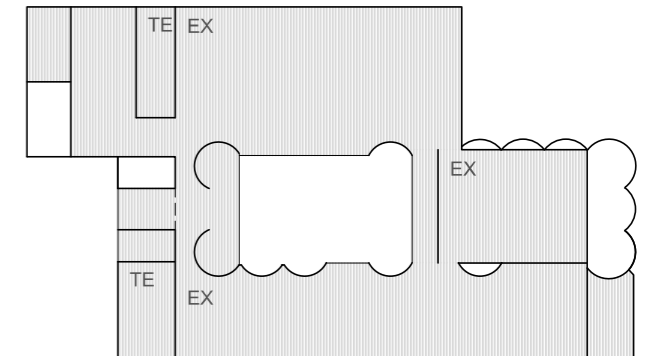
5. etg



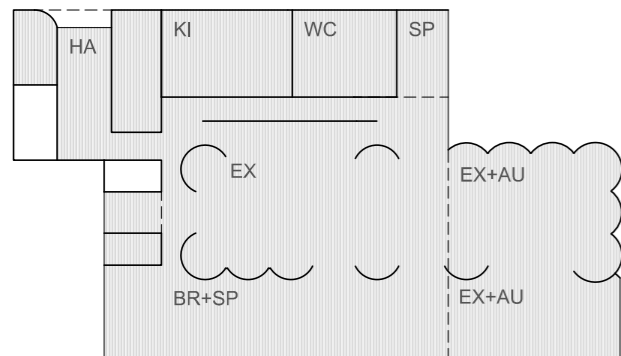
4. etg



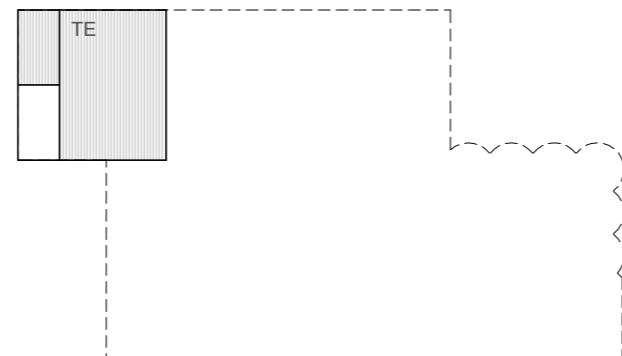
3. etg



2. etg



1. etg



**Opsjon A Hovedendringer:**

- Kjeller reduseres til et minimum
- Lager og verksted går opp nybygg 4. etasje.
- Restaurant 9 etasje etableres i en rektangulær form, kurvet glass utgår.
- Restaurantkjøkken plasseres i 1. etasje
- Kjøkken deles i to: produksjons og åpen kjøkken
- Toalett plasseres med garderobe i 1. etasje.
- Belysning i 7. etasje (teknisk bro går ut) enklere belysningskonsept for silosalen.
- Auditorium går ut, sambruk av en av salene i kulturskolen kan erstatte salen.

**Vurderinger:**

- + Beholder forprosjektets volum
- + Bedre logistikk kjøkken
- + Optimal garderobe toalett 1. etg
- Reduserer utstillingsareal nybygg 4. etg. og Auditorium
- Mister lagerplass i kjeller, noe må inn i adm. etasjen, noe kan gå inn i 8. etg.

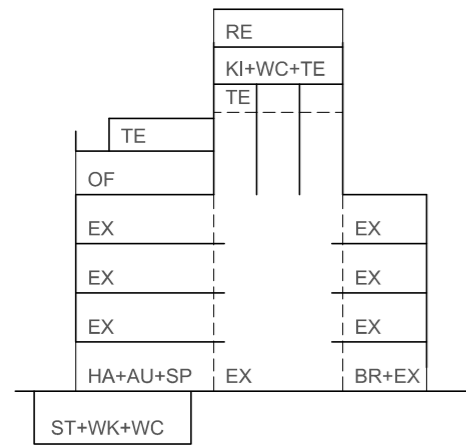
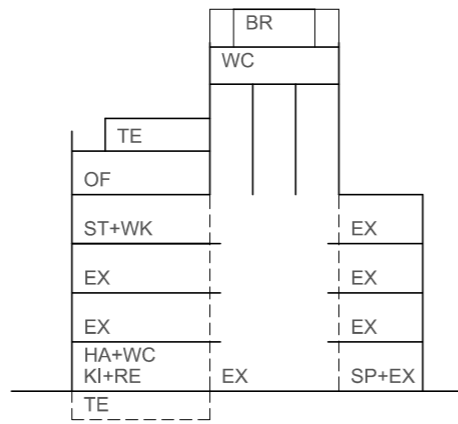


Diagram snitt  
Forprosjekt



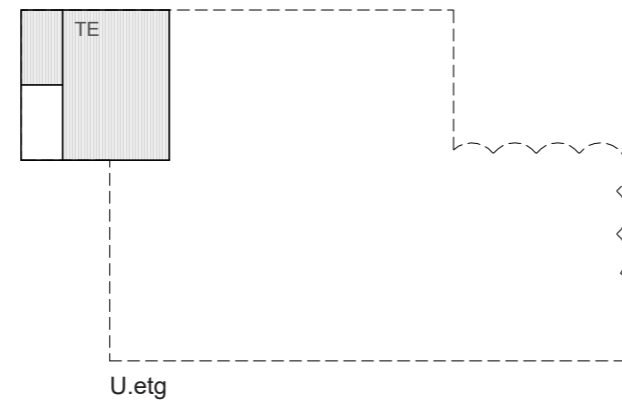
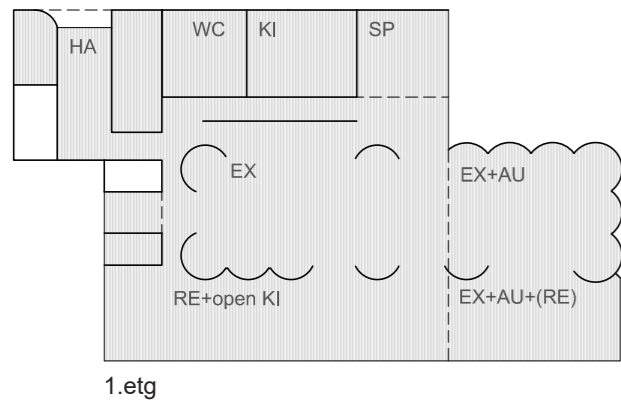
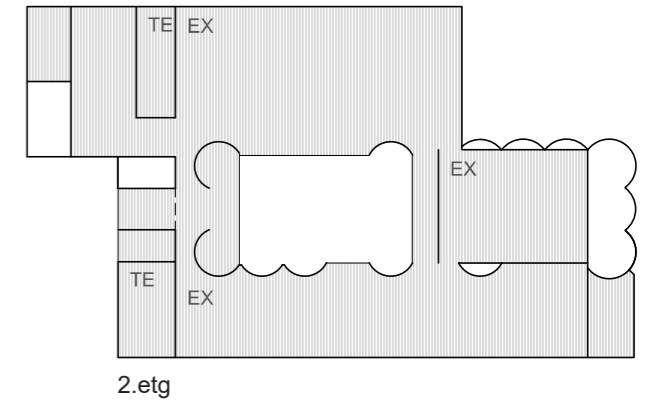
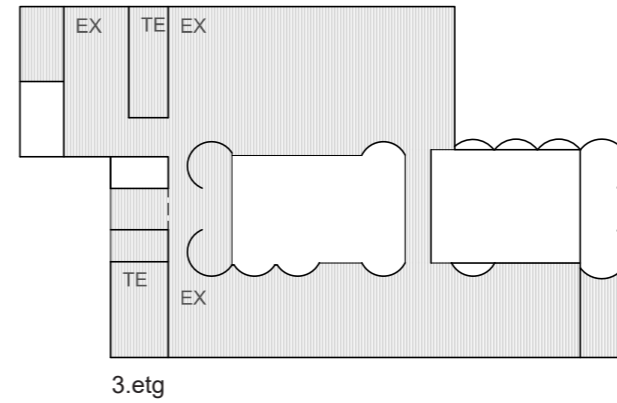
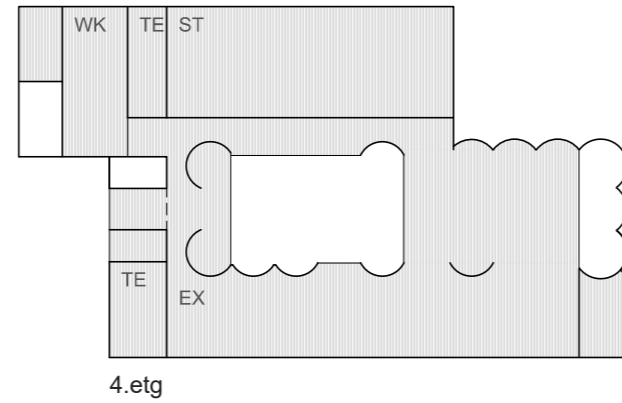
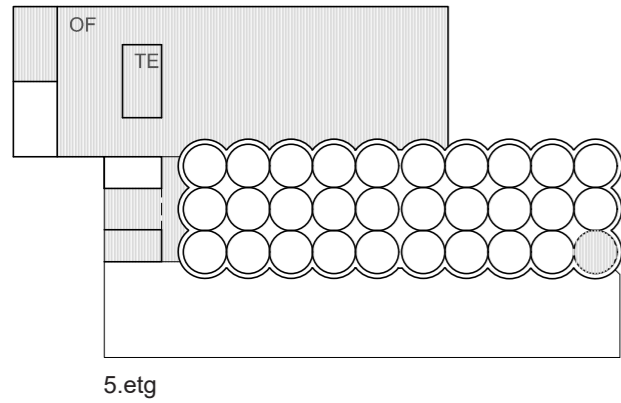
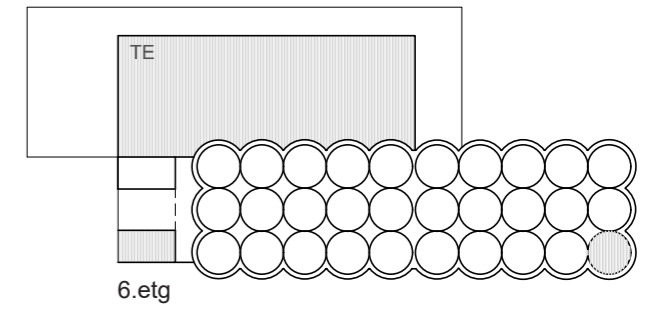
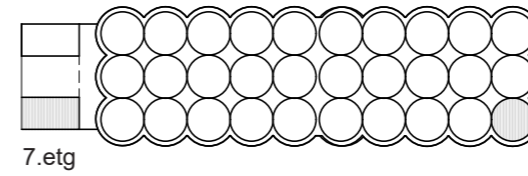
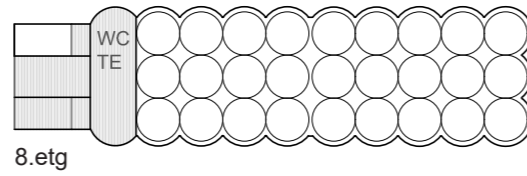
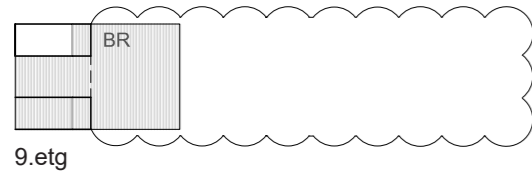
Opsjon

- EX - utstilling-pedagogisk
- ST - lager
- WK - verksted
- SP - butikk
- BR - bar
- RE - restaurant
- KI - kjøkken
- AD - administrasjon
- TE - tekniske rom
- AU - auditorium
- / - tomt

**Reduksjoner:**

U.etg	1300m <sup>2</sup>
9. etg	545m <sup>2</sup>
8. etg	580m <sup>2</sup>
7. etg(teknisk bro)	650m <sup>2</sup>
<b>Total:</b>	<b>3075m<sup>2</sup></b>

Storage	802->430m <sup>2</sup>
Produksjon kjøkken	290->100m <sup>2</sup>
Utstillinger	4100m <sup>2</sup> ->3760m <sup>2</sup>
Verksted	100->0 (ved konservering 4etg?)
Auditorium	110m <sup>2</sup> ->0 (i utst. eller sambruk)



**Opsjon B Hovedendringer:**

- Kjeller reduseres til et minimum
- Lager og verksted går opp i nybygg 4.etasje.
- Restaurant 9 etasje går ut, erstattes av enkel bar med uteservering.
- Restaurant og kjøkken plasseres i 1. etasje.
- Kjøkken deles i to: produksjons og åpen kjøkken
- Toalett plasseres med garderobe i 1.etasje.
- Belysning i 7. etasje (teknisk bro går ut) enklere belysningskonsept for silosalen.
- Auditorium går ut, sambruk av en av salene i kulturskolen kan erstatte salen.
- kan reduseres ytterligere ved å sløyfe bar/ uteservering tak silo.

**Vurderinger:**

- + Beholder forprosjektets volum
- + Bedre logistikk kjøkken, kan bruke silosalen til servering
- + Optimal garderobe toalett 1. etg
- Reduserer utstillingsareal nybygg 4. etg. og Auditorium
- Mister lagerplass i kjeller, noe må inn i adm. etasjen, noe kan gå inn i 8. etg.
- Restaurant i sambruk, ikke uavhengig av museumsbruk.

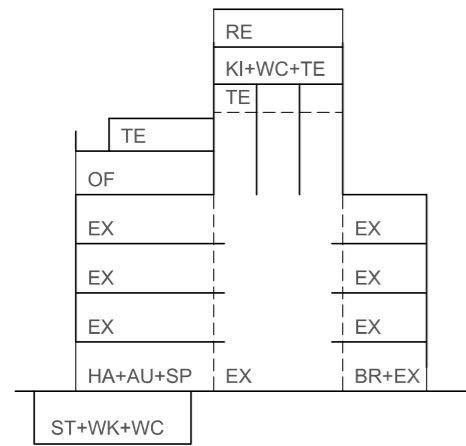
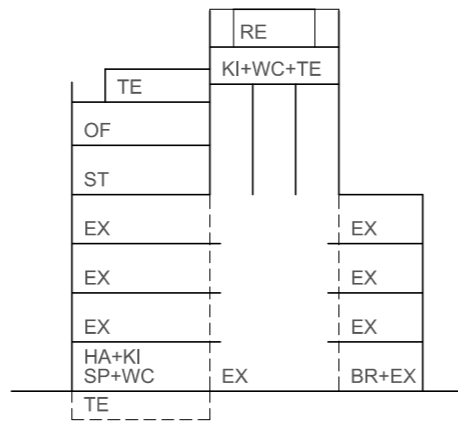


Diagram snitt  
Forprosjekt



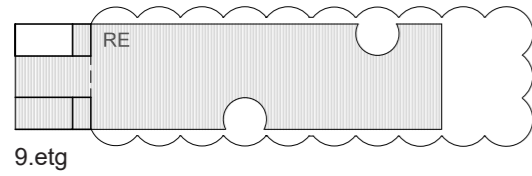
Opsjon

- EX - utstilling-pedagogisk
- ST - lager
- WK - verksted
- SP - butikk
- BR - bar
- RE - restaurant
- KI - kjøkken
- AD - administrasjon
- TE - tekniske rom
- AU - auditorium
- / - tomt

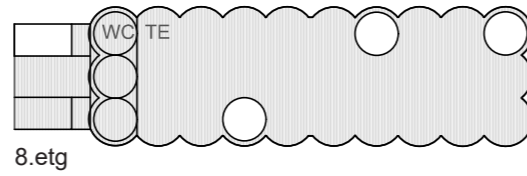
**Reduksjoner:**

U.etg	1300m <sup>2</sup>
9. etg	260m <sup>2</sup>
7. etg (teknisk bro)	650m <sup>2</sup>
6. etg	-720m <sup>2</sup>
<b>Total:</b>	<b>1490m<sup>2</sup></b>

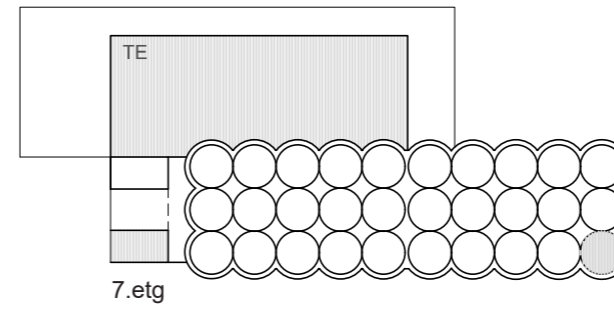
Lager	802->600m <sup>2</sup>
Kjøkken	290->120m <sup>2</sup>
Verksted	100->0 (med restaurering)
Auditorium	110m <sup>2</sup> ->0 (i utst. eller sambruk)



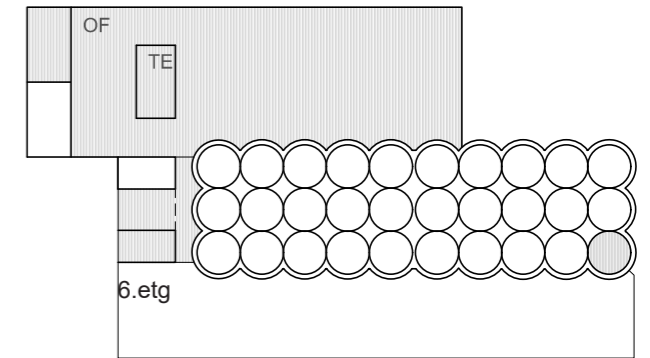
9.etg



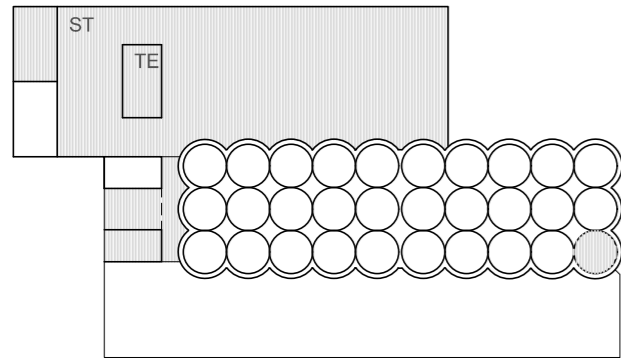
8.etg



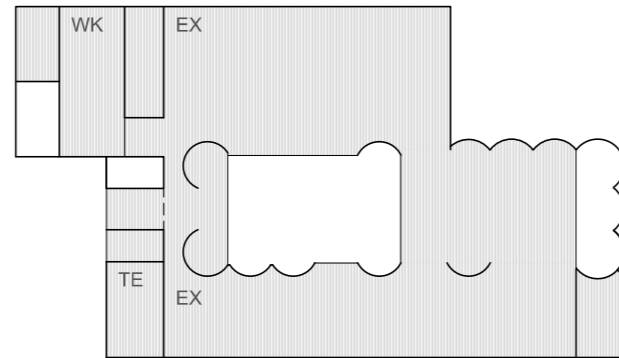
7.etg



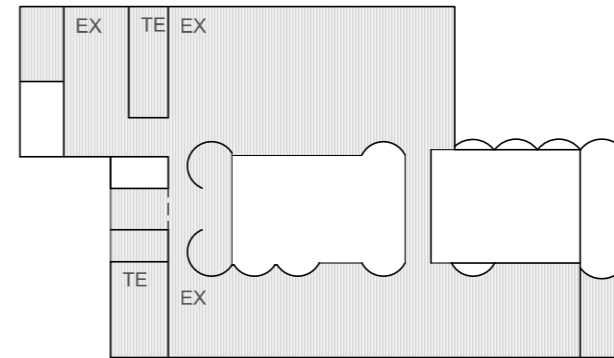
6.etg



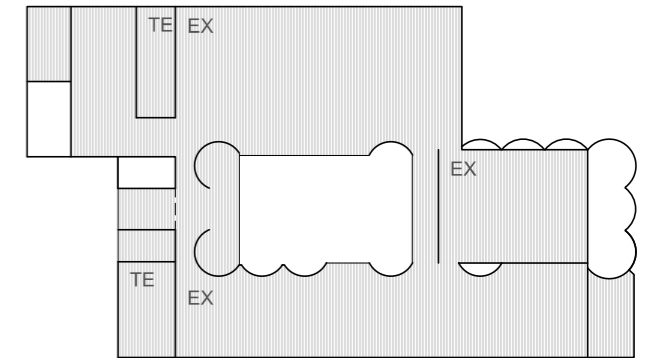
5.etg



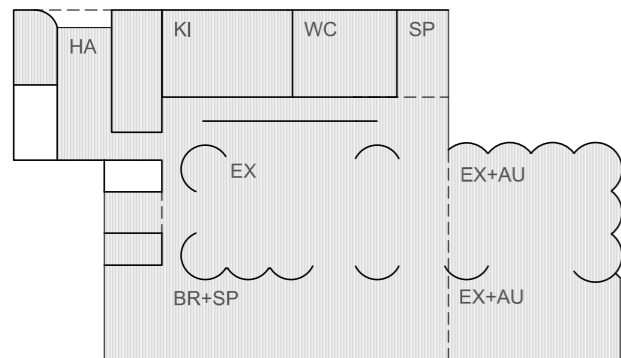
4.etg



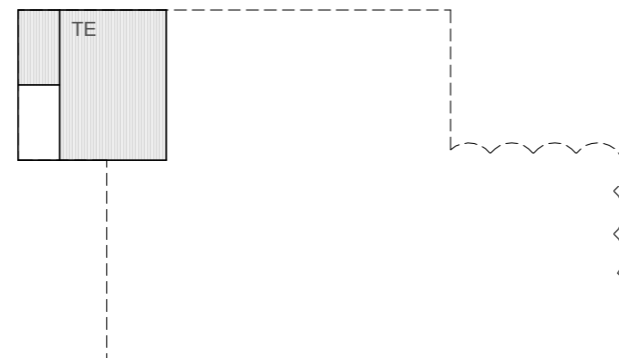
3.etg



2.etg



1.etg



U.etg

**Opsjon C Hovedendringer:**

- Kjeller reduseres til et minimum
- Lager og verksted går opp i nybygg 5.etasje.
- Adm. etableres i ny 6. etg nybygg.
- Restaurant 9 etasje etableres i en rektangulær form, kurvet glass utgå.
- Restaurantkjøkken plasseres i 1. etasje
- Kjøkken deles i to: produksjons og åpen kjøkken
- Toalett plasseres med garderobe i 1.etasje.
- Belysning i 7. etasje (teknisk bro går ut) enklere belysningskonsept for silosalen.
- Auditorium går ut, sambruk av en av salene i kultur-skolen?

**Vurderinger:**

- + Beholder forprosjektets utstillingsareal
- + Bedre logistikk kjøkken, kan bruke silosalen til servering
- + Optimal garderobe toalett 1. etg
- Volum nybygg i dårlig proporsjon med silo, skjuler dagens silobygg sett fra byen. Uttrykksmessig/ vernemessig vurdert av ARK som ikke ønskelig.
- Mister lagerplass i kjeller, noe må inn i adm. etasjen, noe kan gå inn i 8. etg.