

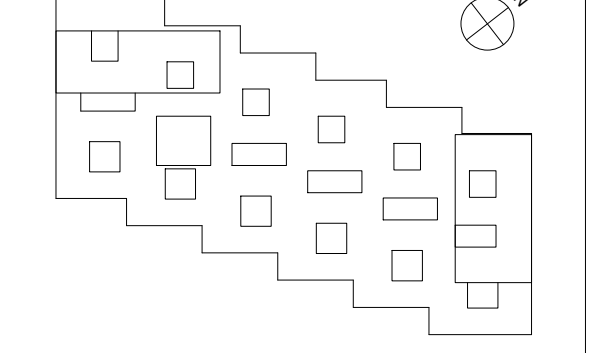
3	24.08.16	TILBEGRENSNING	rev	rev
2	15.04.16	TILBEGRENSNING	rev	rev
1	04.04.16	Vertikal kontroll	rev	rev
Rev	Dato	Beskrivelse	Taget	Kont

316 | GA24-001-A-200-23-001 | 6-03

- Prosjektleder:
- ARKIFGL: RATIO Arkitekt as | Cubo as
 - LARK: RATIO Arkitekt as
 - RB: MOE as | Høyer Friseth as
 - RG: MOE as | Grønn Teknikk as
 - RV: Enghsen & Hørgen as | MOE as
 - RE: Ing Per Rasmussen as | Mathes & Enghsen as | MOE as
 - RBK: Enghsen & Hørgen as
 - RAKU: Bhekke & Strand as
 - LARK: Kristine Jensen Tegnestue ApS | Bjørnsk & Lundstrøm as

Ratio arkitekt as
Enghsen & Hørgen as
Ing Per Rasmussen as
Ark Kristine Jensen Tegnestue ApS

UIO Livsvitenskapsbygget



Tilskudd:		Postboks 1106 Dep	
0022 Oslo		TELEFON 815 81 045	
www.statbygg.no			
FORPROSJEKT	0	Tilbud	RM
1004501	08.09.2015	1:200	ADL

Plan 001