

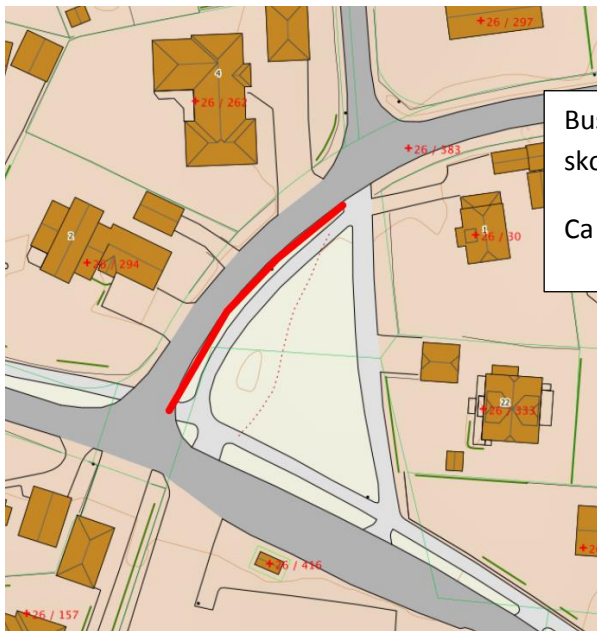
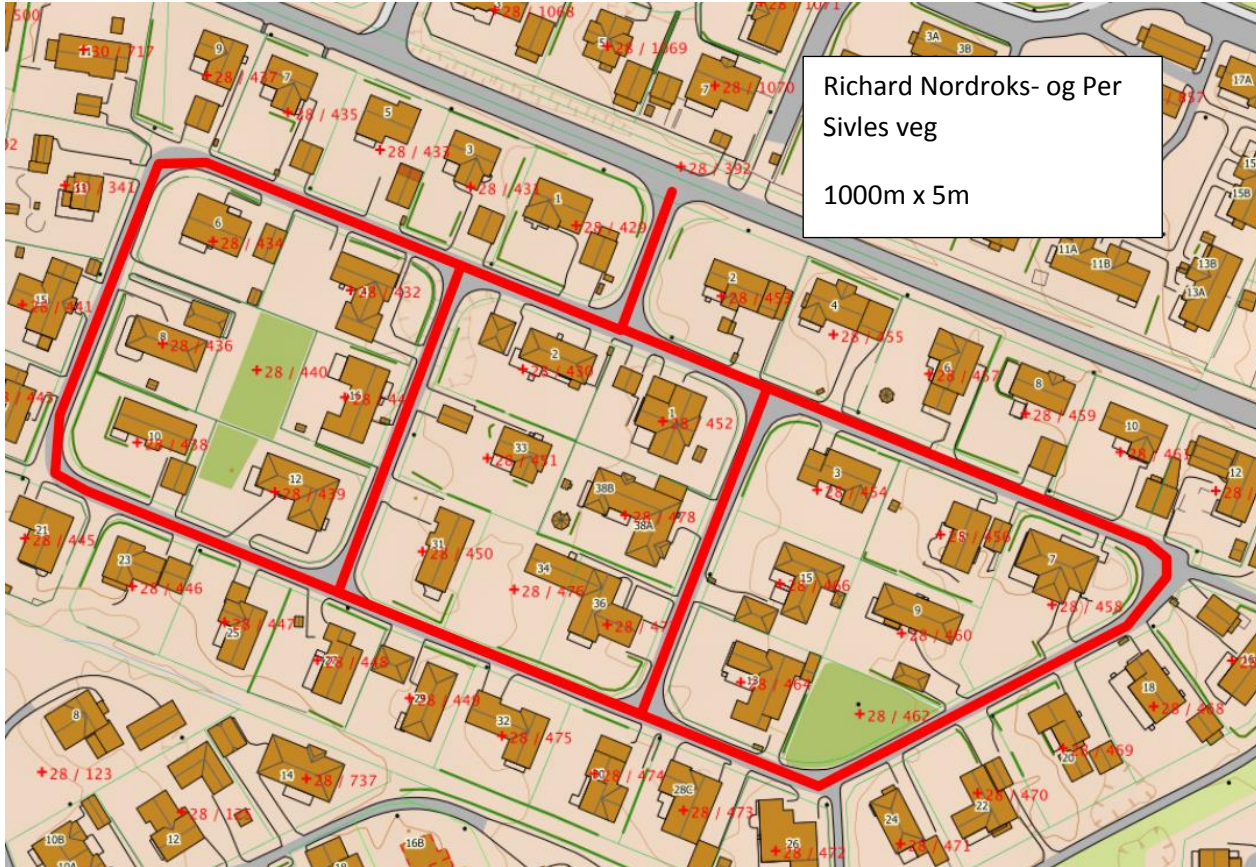


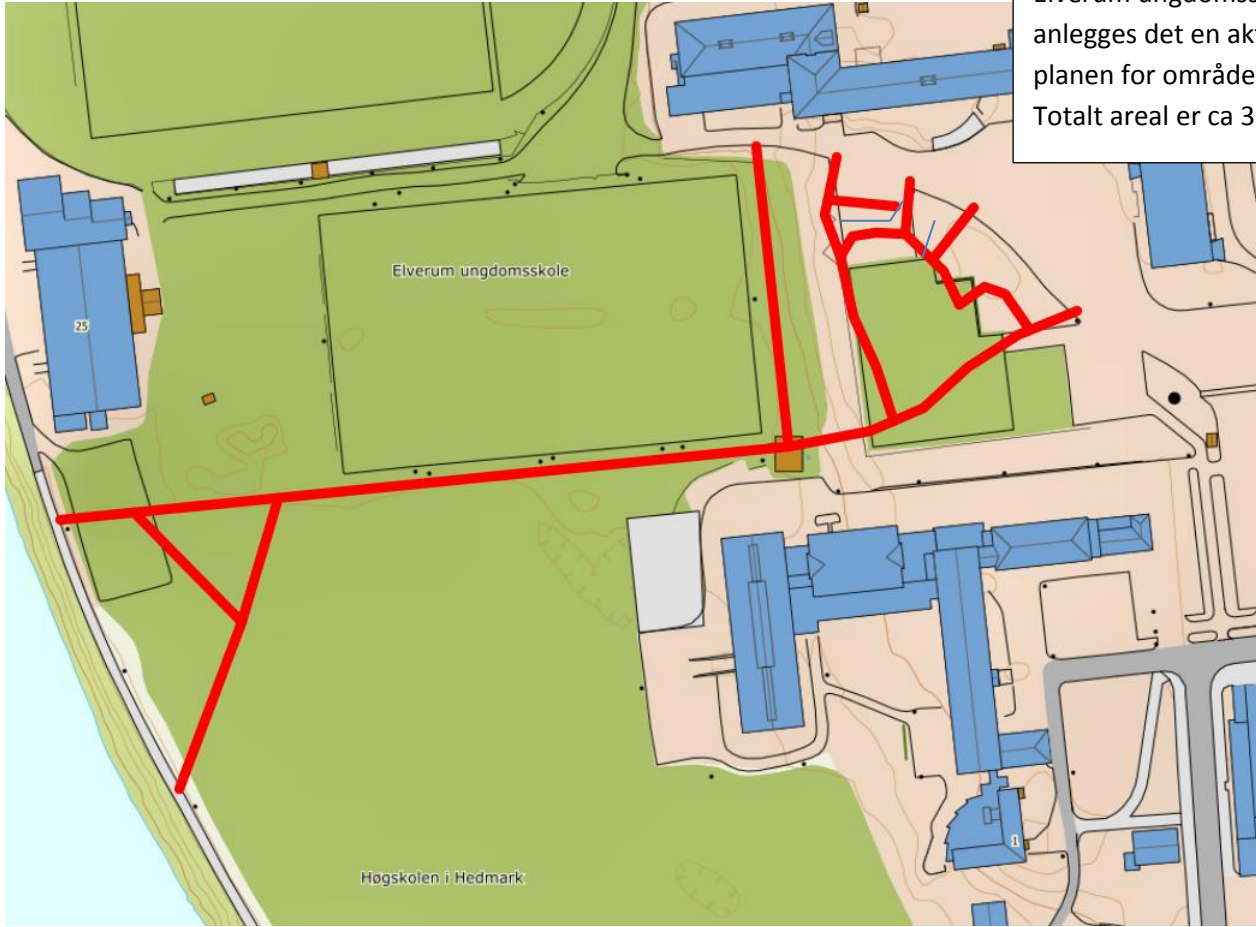
Kart asfaltplan 2018



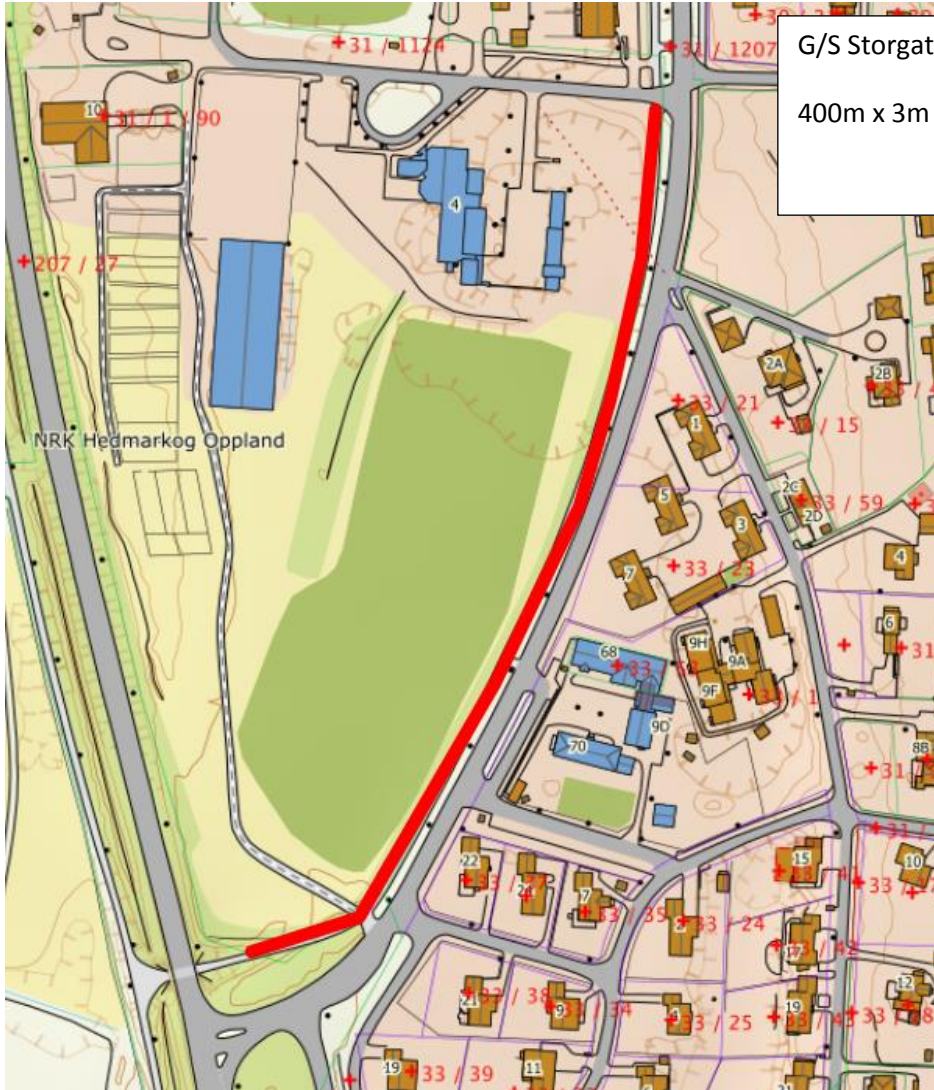
Mastmovegen 46

190m x 3m

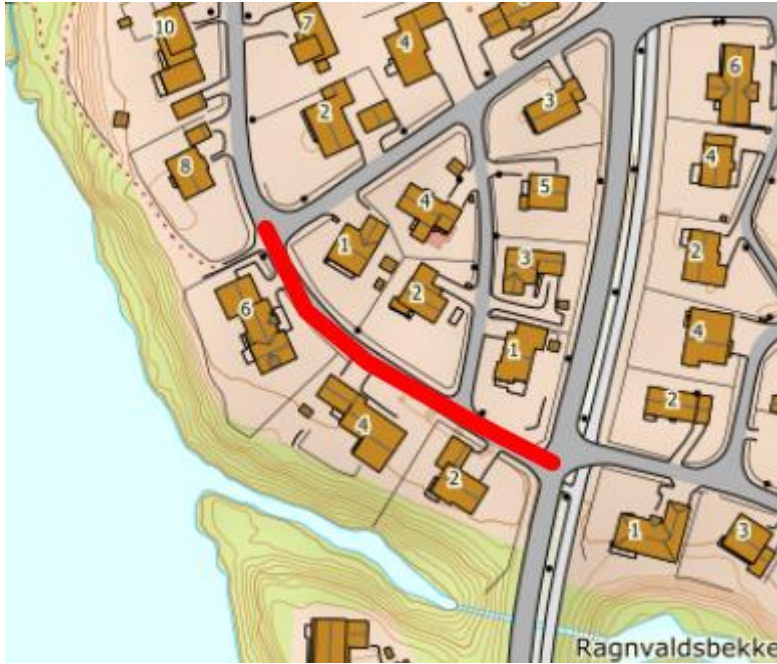




Elverum ungdomsskole. Her anlegges det en aktivitetspark, planen for området er ikke klar. Totalt areal er ca 3200m²

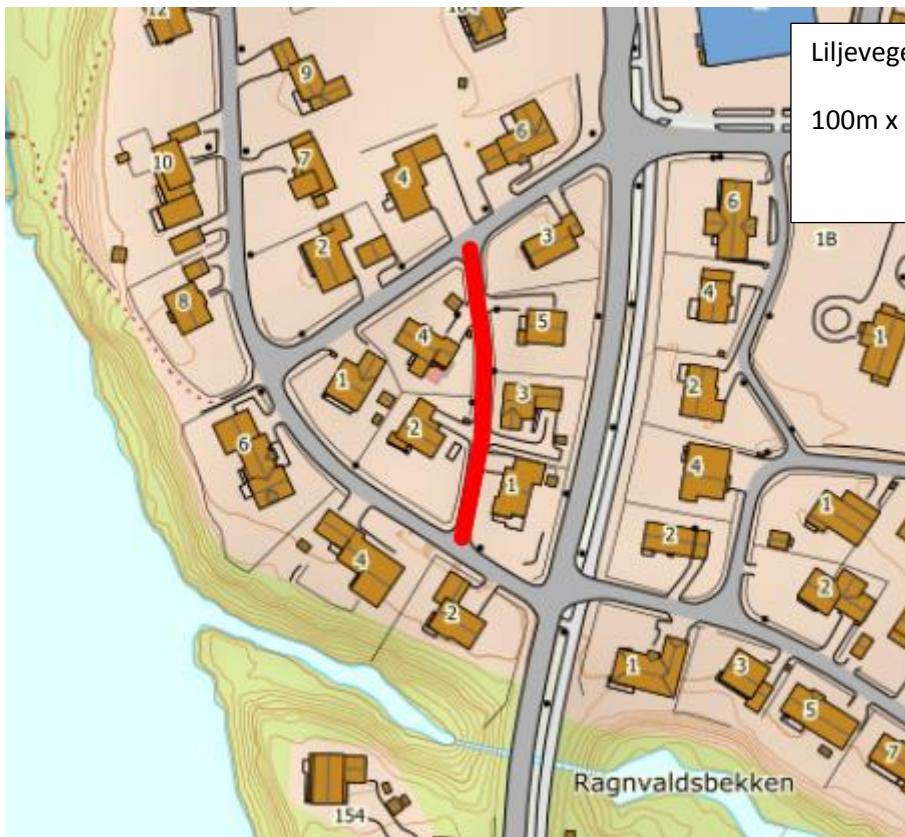


G/S Storgata sør (prestegårdsjordet)
400m x 3m



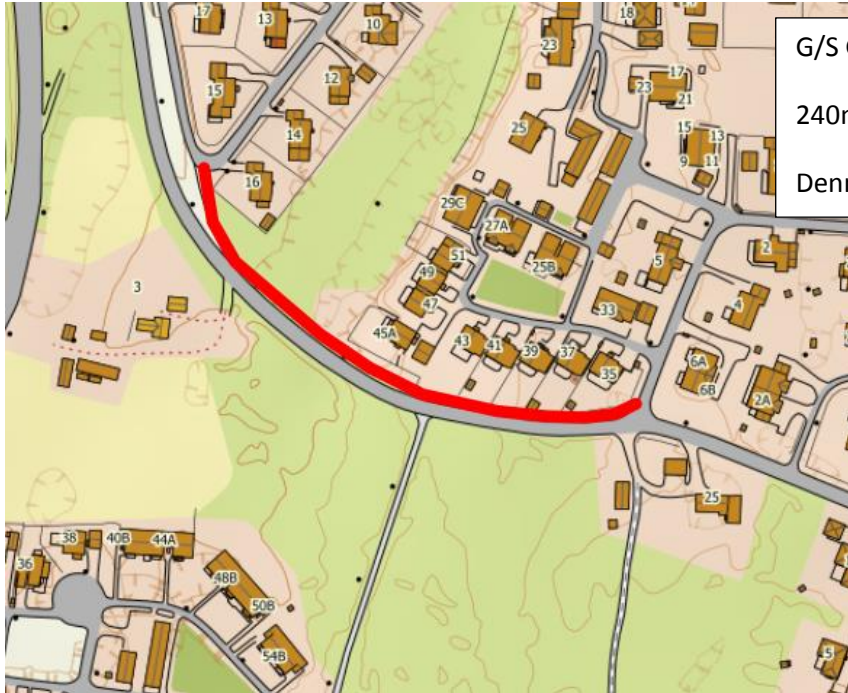
Konvallvegen

120m x 5m



Liljevegen

100m x 4m



G/S Grøndalsbakken

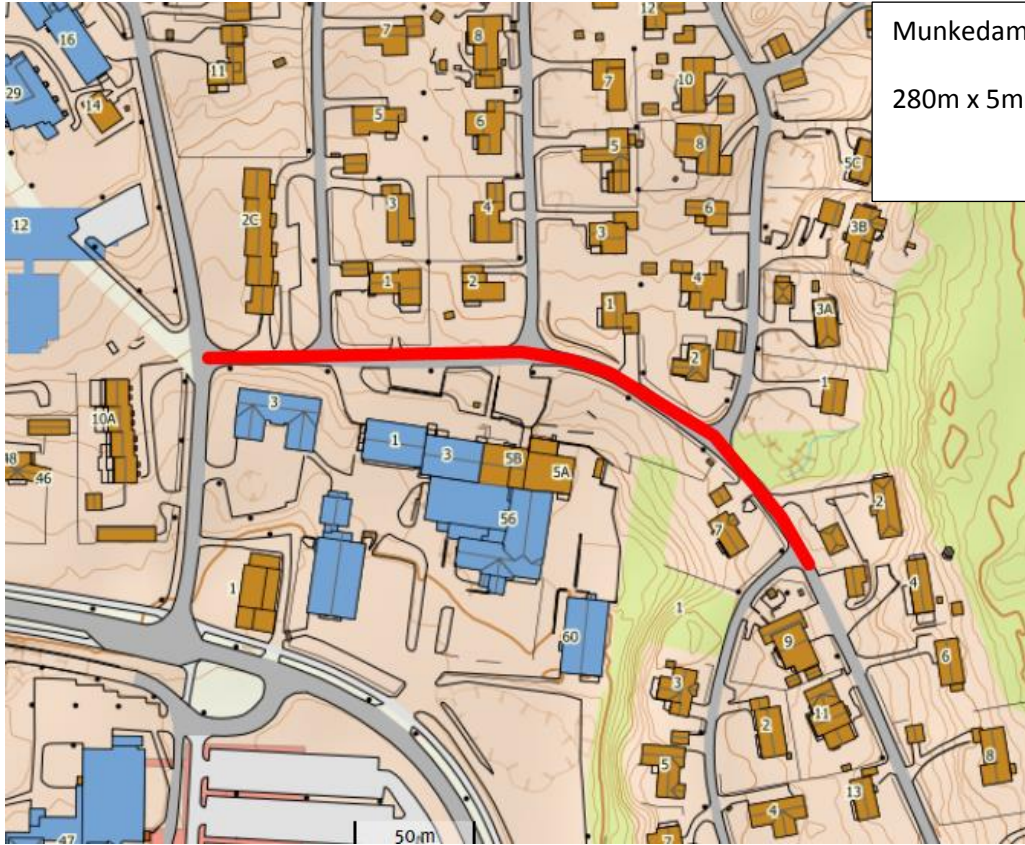
240m x 3m

Denne kan bli utsatt til 2019.



G/S Henrik Wergelandsveg

450m x 3m



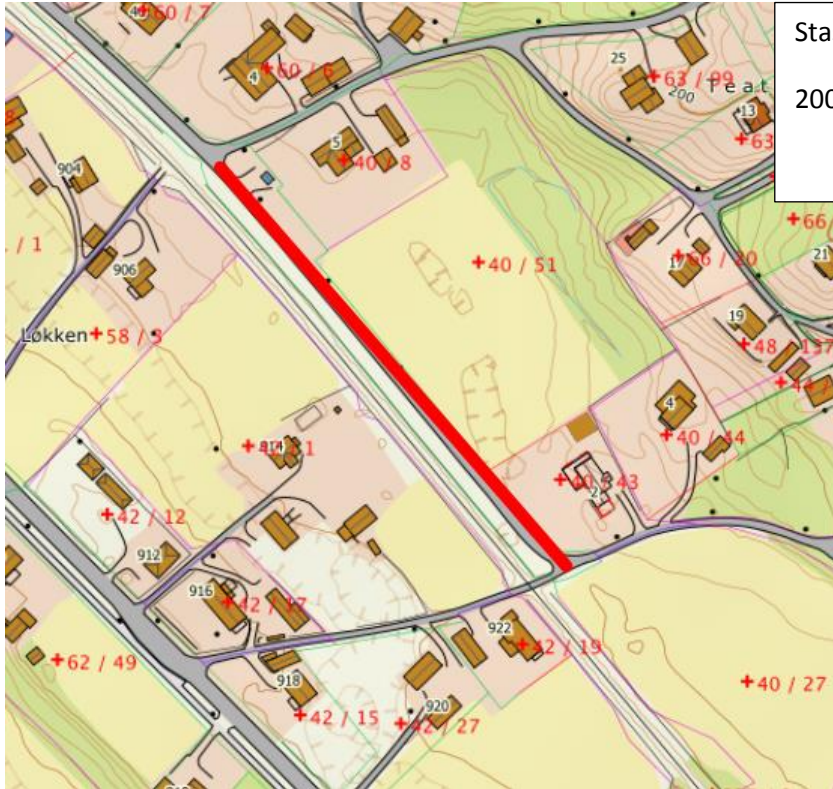
Munkedamsvegen

280m x 5m



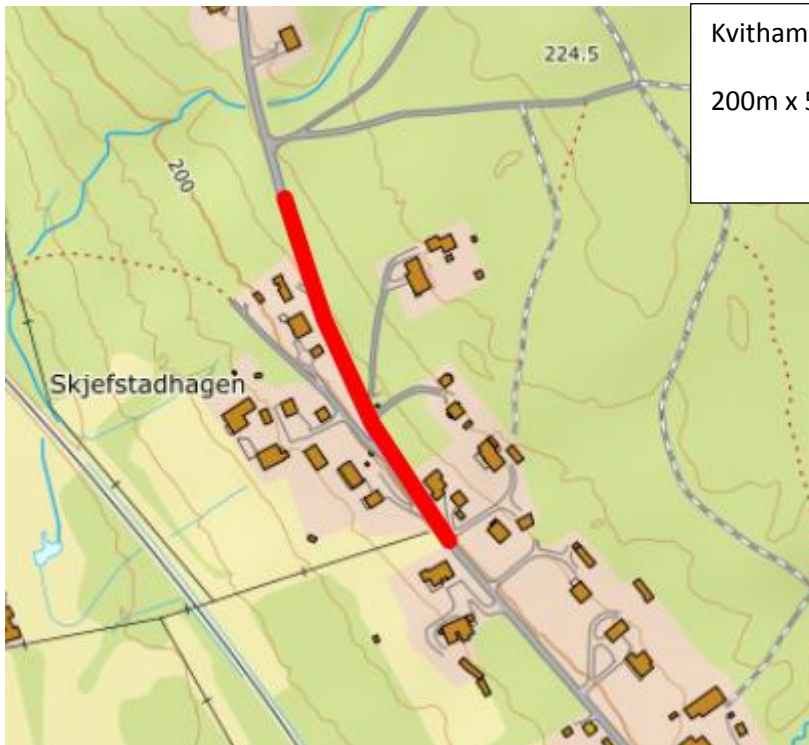
Grønmyrvegen

150m x 5m. Avhengig av fremdrift kan mengden asfalt bli mindre her.



Stasjonsvegen

200m x 5m.



Kvithammarvegen

200m x 5m.