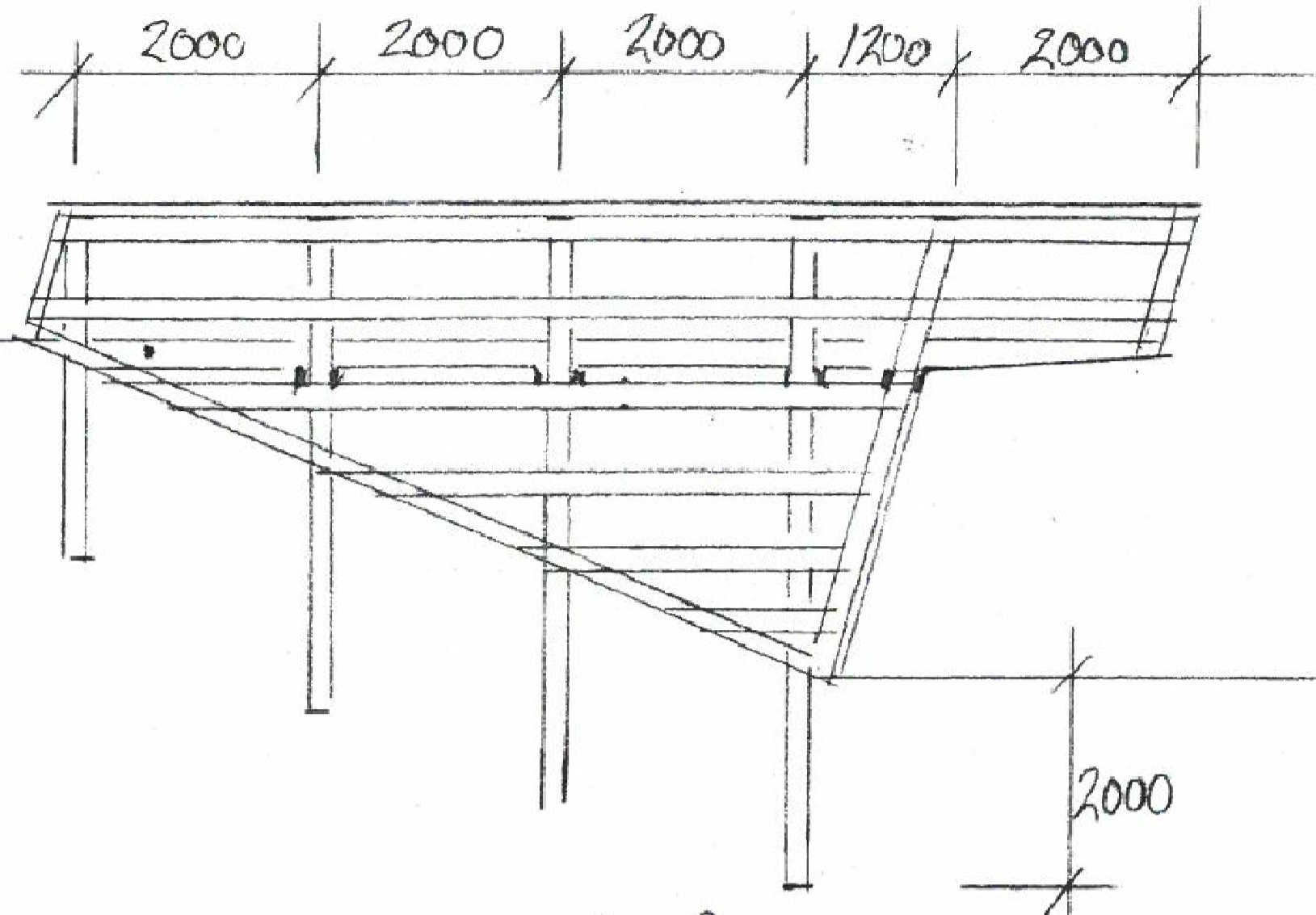
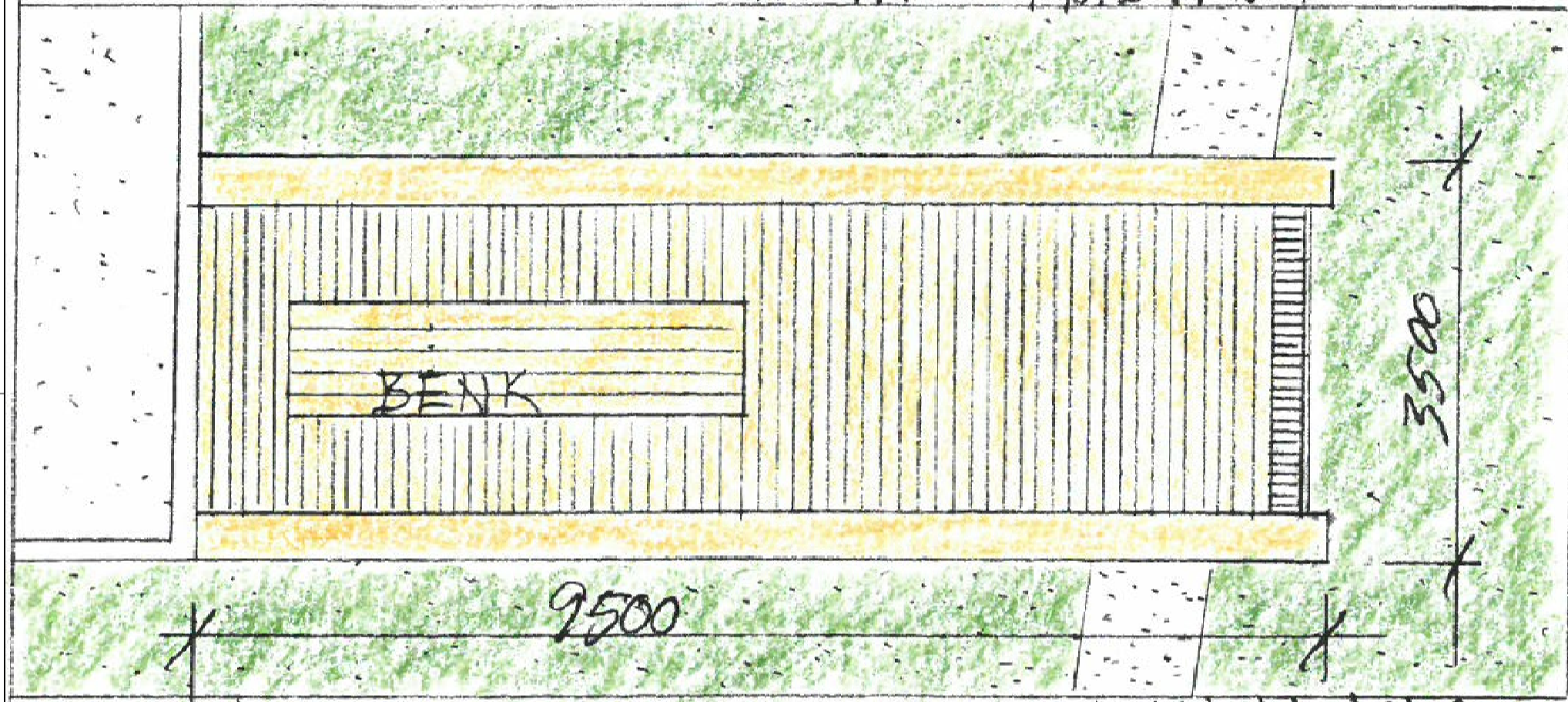


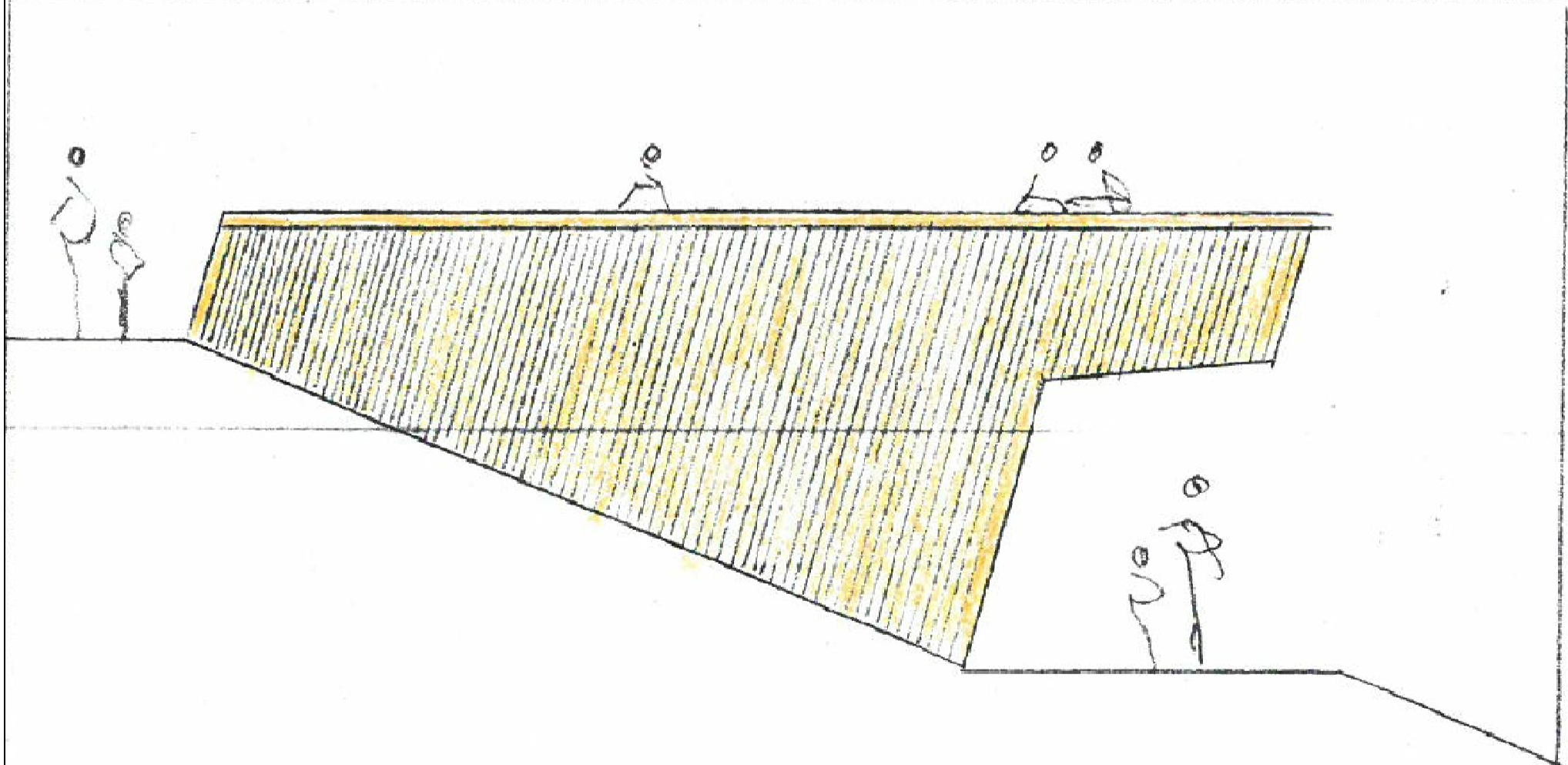
Sist logret: 22.02.2018 av SBA. Filbane: P:\2250 - 2299\2252 HVL Gymnasbygget - utomhus\3_tegning\1_DAK\1_AM Arbeidsmodell\AM_2252_HVL Gymnasbygget - detaljer.dwg



PRINSIPP KONSTRUKSJON.

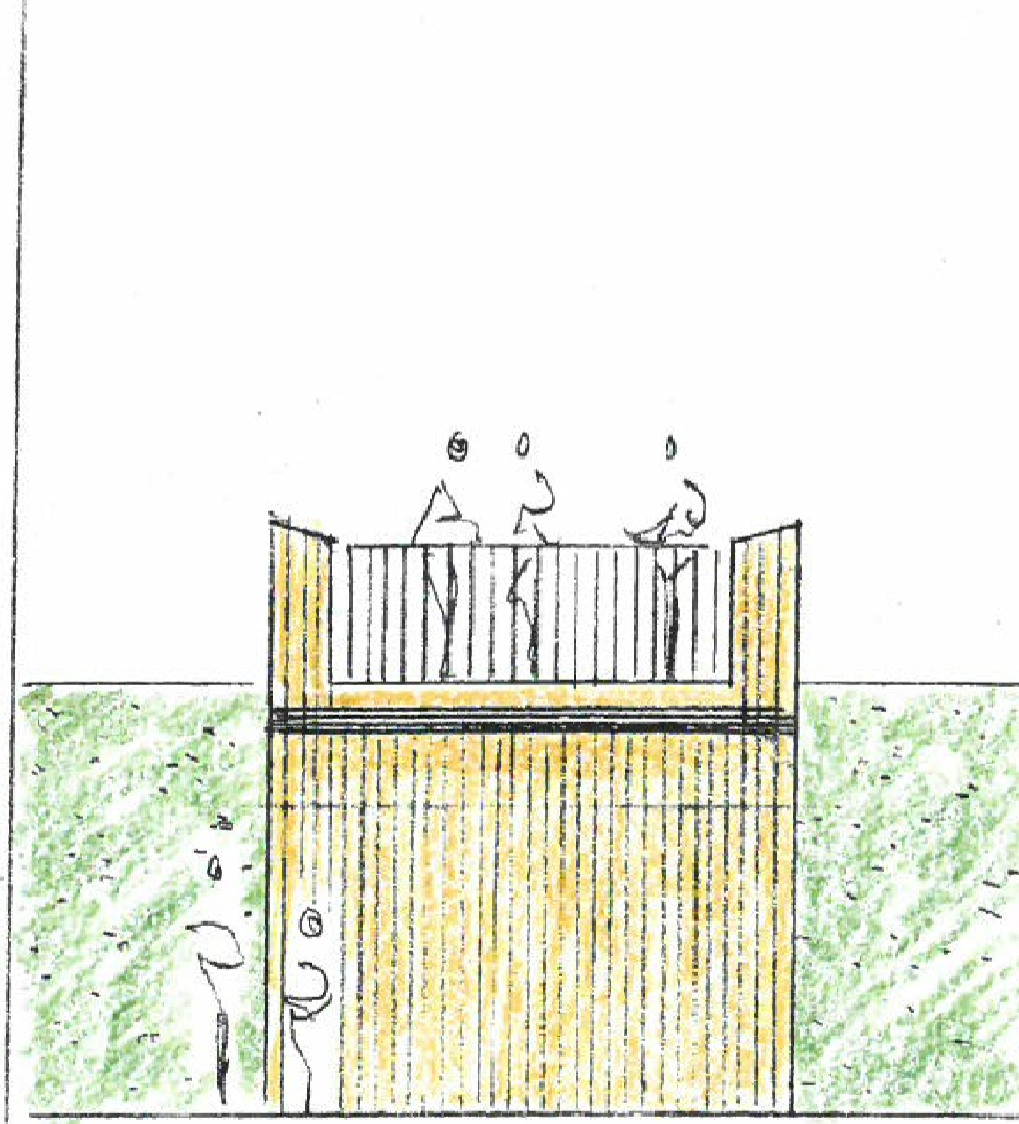
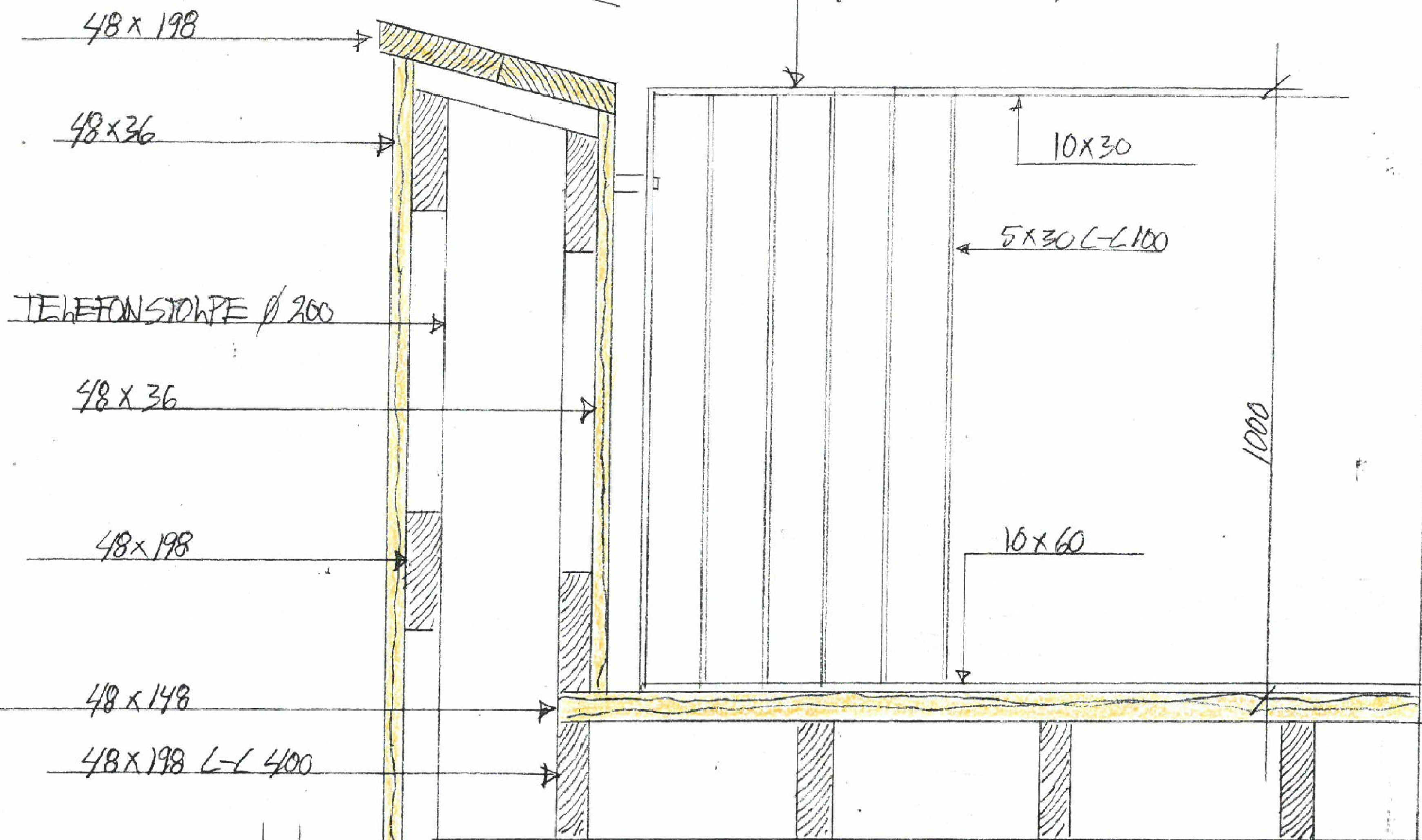


PLAN H=1:100

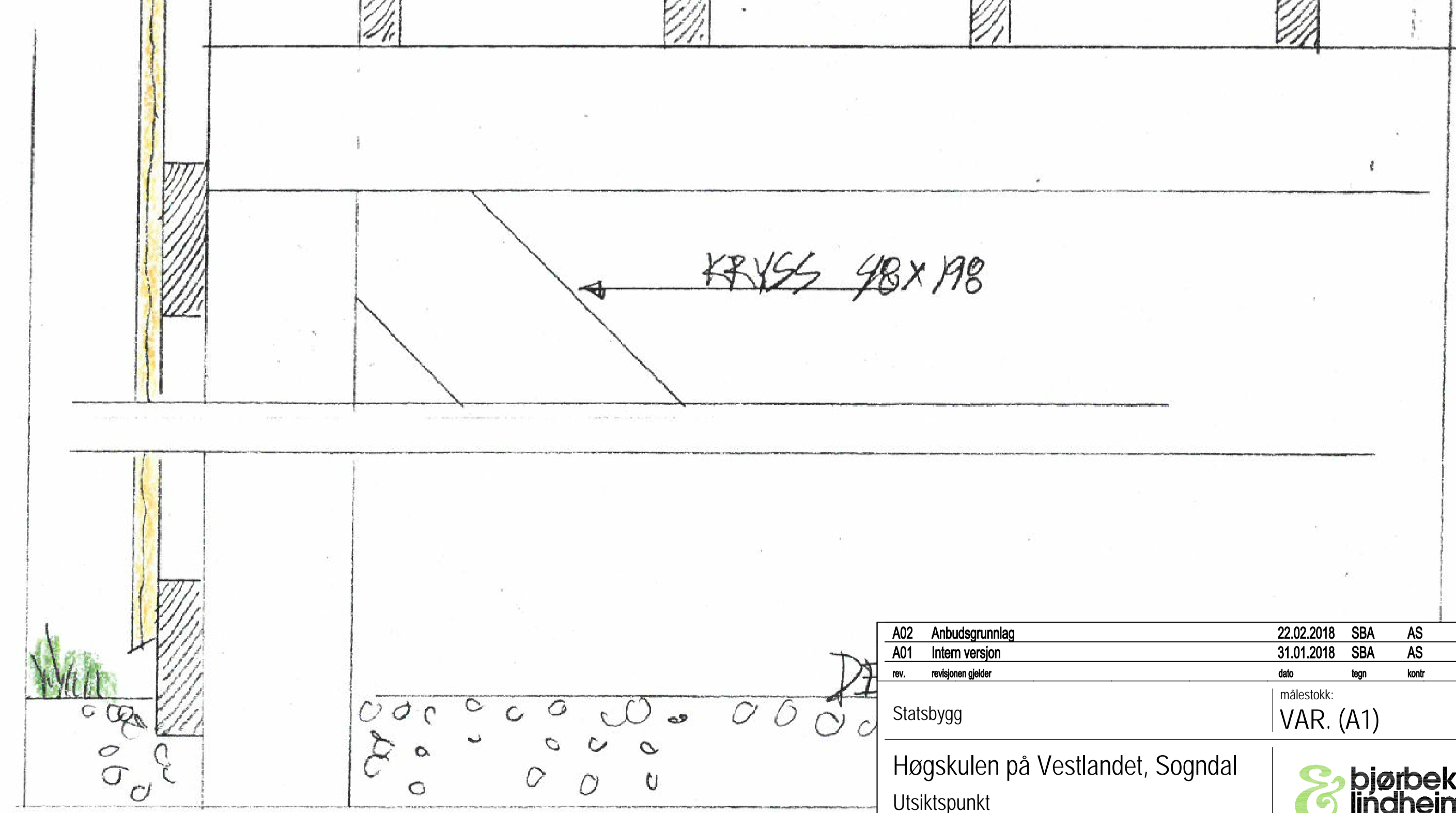


OPPRISS SIDE H=1:100

NB! ROYALWIMPREGNERT



OPPRISS FRONT H=1:100



SOGNDAL

A02	Anbudsgrunnlag	22.02.2018	SBA	AS	AS
A01	Intern versjon	31.01.2018	SBA	AS	AS
rev.	revisjonen gjelder	dato	tegn	kontr	godk
Statsbygg		målestokk: VAR. (A1)			
Høgskulen på Vestlandet, Sogndal					
Utsiktspunkt 1108301 HVL Gymnasbygget					
koordinatsystem	høydereferanse	arkiv	dato		
EUREF89 NTM 07	NN2000	2252	31.01.2018		

