

Component list

 Style no: **M-CA-10**

 Style: **Mens CARDIGAN**

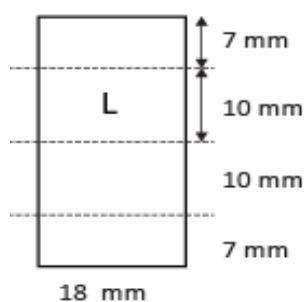
Date: 13/07/17

Material	Description	Placement	Amount
Fabric			
Mainfabric:			
Composition	50% merino wool 50% acrylic		
Composition	Half milano. 10 gauge. Antipilling treated yarn, NM 2/28		
Colour	Greymelange (customers own colour)		
Woven tape	Fishbonetape 20 mm	Inside CF	
Trimmings			
Thread; sewing and overlock	Core spun polyester. Colour: Tone in tone.		
Embroidery	Embroidery logo. Tone in tone grey		
Buttons	15 mm pressbutton. Brusched silver metal with engraved logotype. Sparebutton in small plasticbag on carelabel.	CF	4
Mainlabel	Woven polyester satin label, grey with midblue letters	CB neck	1
Sizelabel	Woven polyester satin label, grey with midblue letters	CB neck	1
Carelabel	Woven polyester satin label, white with black print	Left sideseam	1

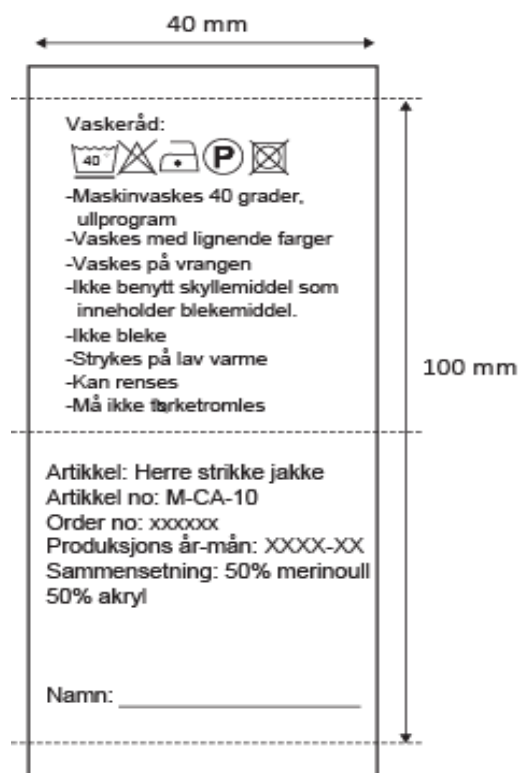
Inside label



Size label



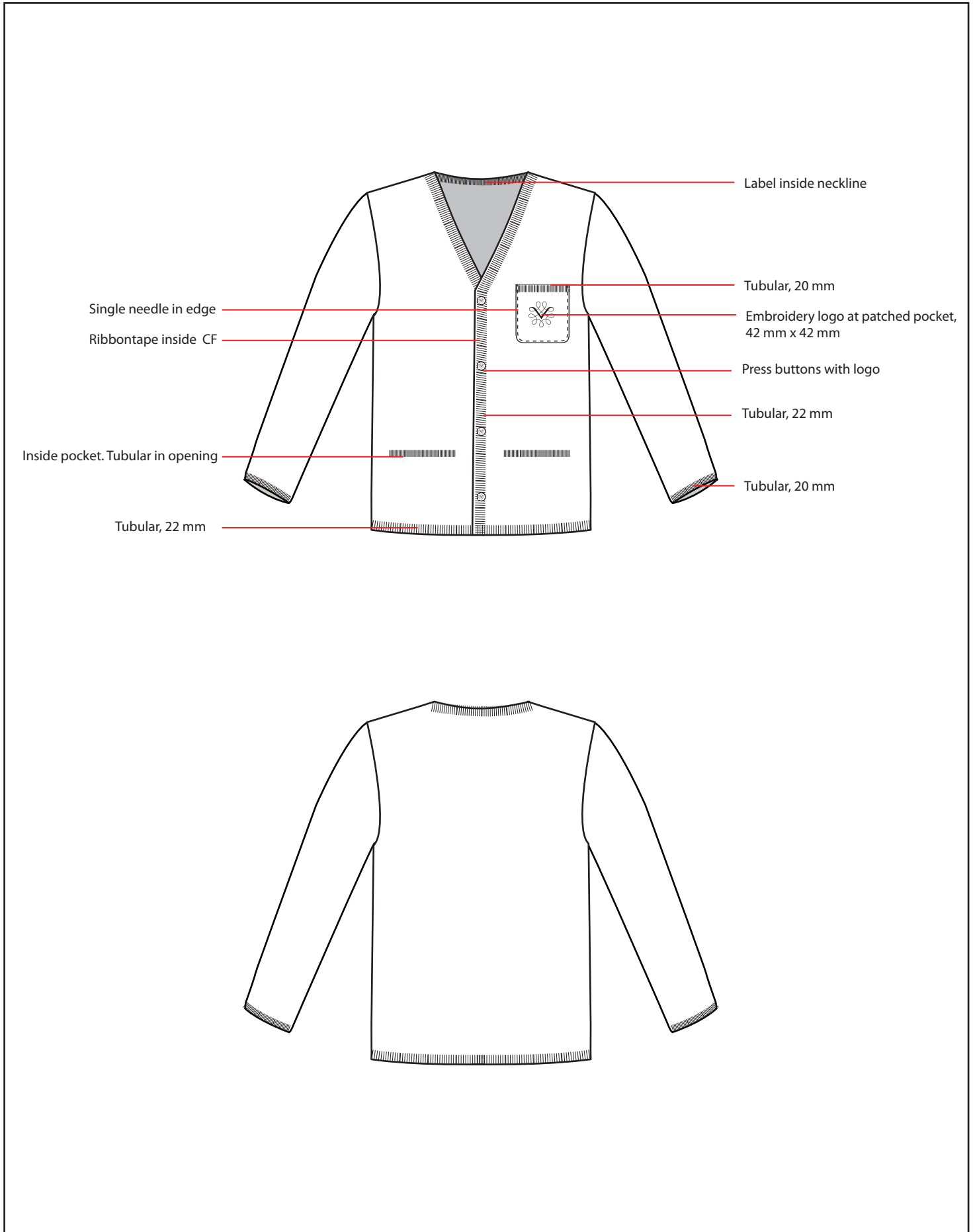
cardigan: M-CA-10



Technical specifications

Style no: **M-CA-10** Style: **Mens CARDIGAN**

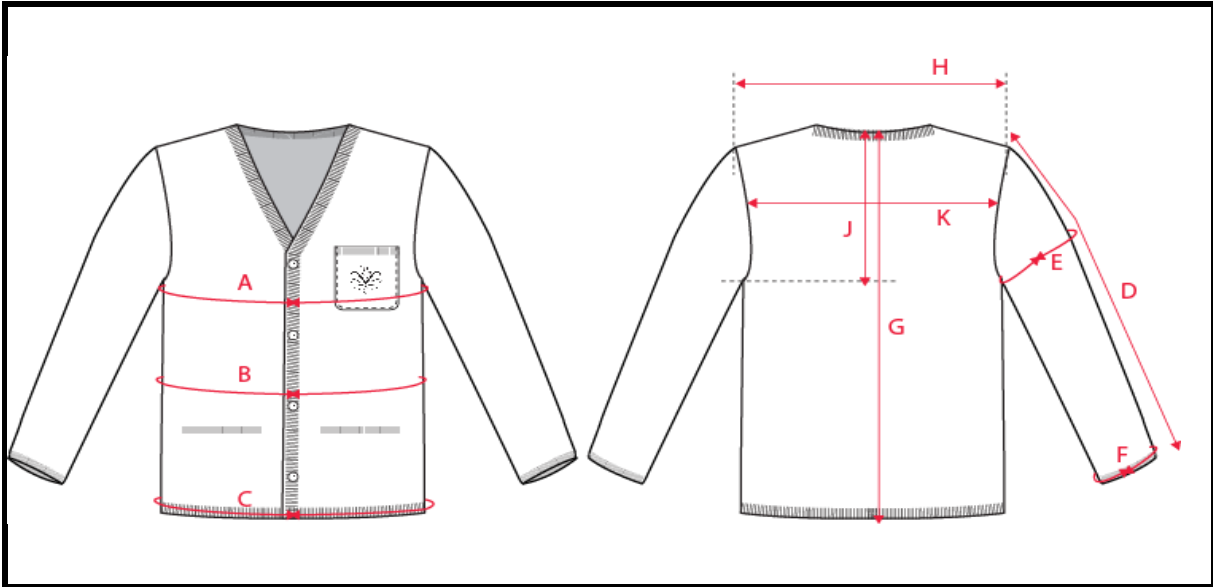
Date: 15-08-05



Measurementlist



Style no: **M-CA-10** Style: **Mens CARDIGAN** Date: 19/07/17



		S	M	L	XL	2XL	3XL	4XL	5XL
A	1/2 Chest	51	55	59	63	67	71	75	79
B	1/2 Waist	48	52	56	60	64	68	72	76
C	1/2 Bottom	45	49	53	57	61	65	69	73
G	CB length	68	70	72	74	76	78	80	82
E	1/2 Bicep	17	18	19	20	21	22	23	24
J	Armeholeddepth, fr cb neck	24,5	25,5	26,5	27,5	28,5	29,5	30,5	31,5
H	Cross shoulder	43	45	47	49	51	53	55	57
D	Sleeve length	66	67	68	69	70	71	72	73
F	1/2 SLV width 30 cm fr opening	14,5	15,25	16	16,75	17,5	18,25	19	19,75
F	1/2 Sleeve opening	9,5	10	10,5	11	11,5	12	12,5	13
K	Neckwidth	17,5	18	18,5	19	19,5	20	20,5	21
L	Neckdrop front	20	20,5	21	21,5	22	22,5	23	23,5
M	Neckdrop back	1	1	1	1	1	1	1	1
	Tubular placket	2,2	2,2	2,2	2,2	2,2	2,2	2,2	2,2
	Tubular cuff	2	2	2	2	2	2	2	2
	Tubular bottom	2,2	2,2	2,2	2,2	2,2	2,2	2,2	2,2
	Tubular top edge chest pocket	2	2	2	2	2	2	2	2
	Tubular top edge lower pocket	2,2	2,2	2,2	2,2	2,2	2,2	2,2	2,2
	Lower pkt width	12	12	12	12	12	12	12	12
	Lower pkt position fr HPS	51	53	55	57	59	61	63	65
	Chest pkt height			12,5					
	Chest pkt width			11					
	Chest pkt position fr HPS	22,5	23	23,5	24	24,5	25	25,5	26
	Embroidery height	4	4	4	4	4	4	4	4
	Embroidery width	4	4	4	4	4	4	4	4
	Embroidery placement fr top edge pkt			3,5					