

# Component list

 Style no: **W-CA-09** Style: **Womens CARDIGAN**

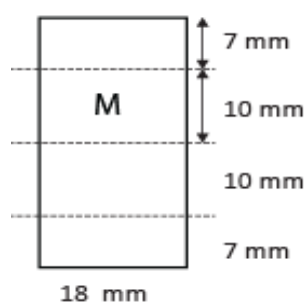
Date: 13/07/17

Material	Description	Placement	Amount
<b>Fabric</b>			
Mainfabric:			
Composition	50% merino wool 50% acrylic		
Composition	Half milano. 10 gauge. Antipilling treated yarn, NM 2/28		
Colour	Greymelange (customers own colour)		
Woven tape	Fishbonetape 20 mm	Inside CF	
<b>Trimmings</b>			
Thread; sewing and overlock	Core spun polyester. Colour: Tone in tone.		
Embroidery	Embroidery logo. Tone in tone grey		
Buttons	15 mm pressbutton. Brusched silver metal with engraved logotype. Sparebutton in small plasticbag on carelabel.	CF	6
Mainlabel	Woven polyester satin label, grey with midblue letters	CB neck	1
Sizelabel	Woven polyester satin label, grey with midblue letters	CB neck	1
Carelabel	Woven polyester satin label, white with black print	Left sideseam	1

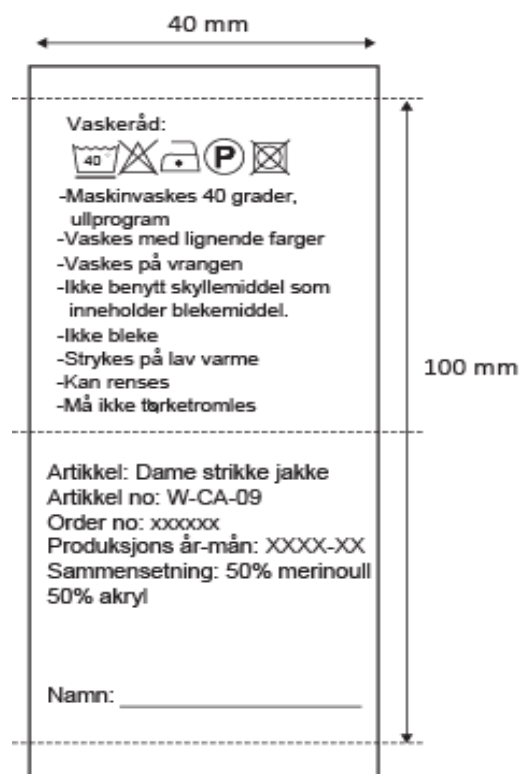
### Inside label



### Size label



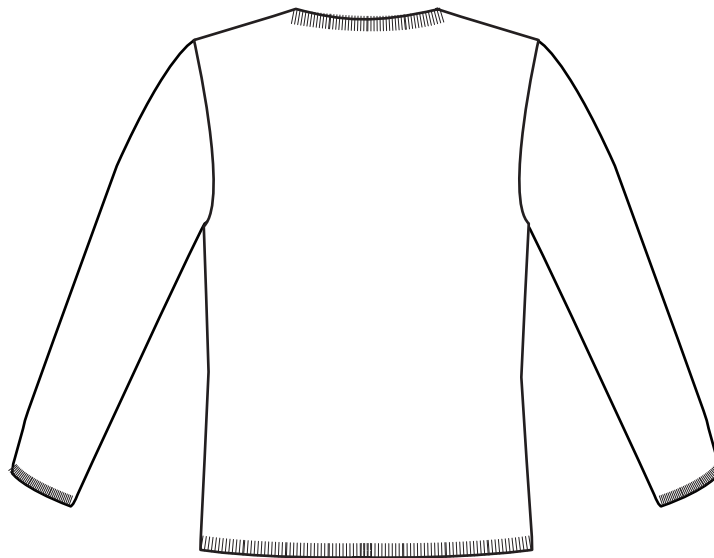
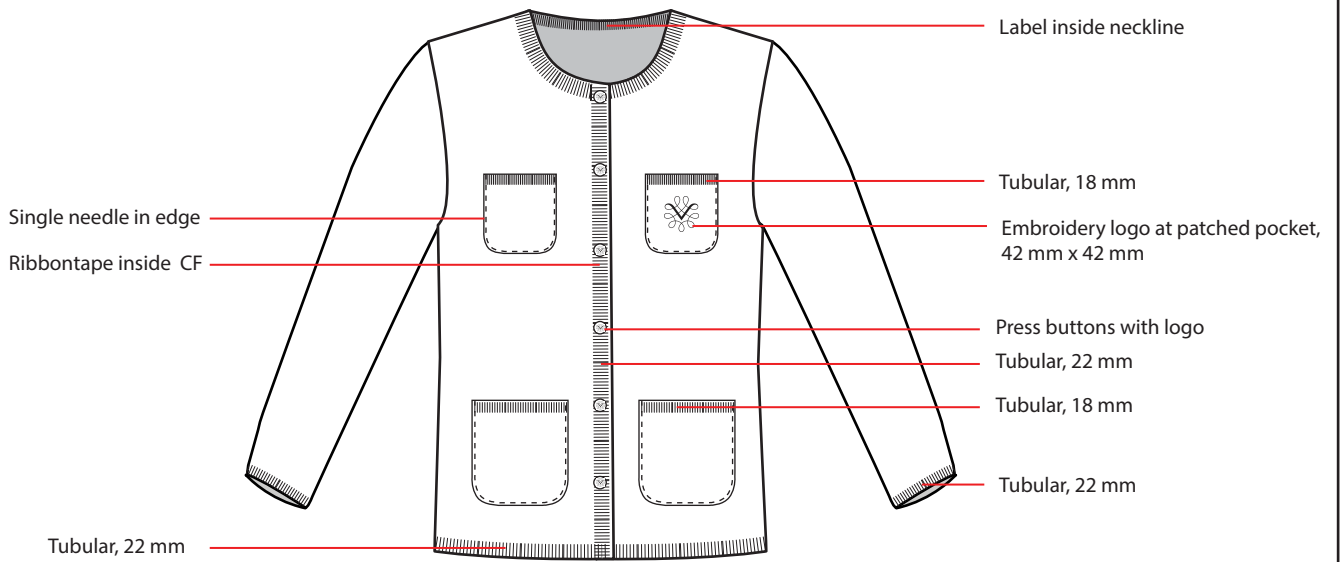
### cardigan: W-CA-09



# Technical specifications

Style no: **W-CA-09**    Style: **Womens CARDIGAN**

Date: **19/07/17**



# Measurementlist



VINMONOPOLET

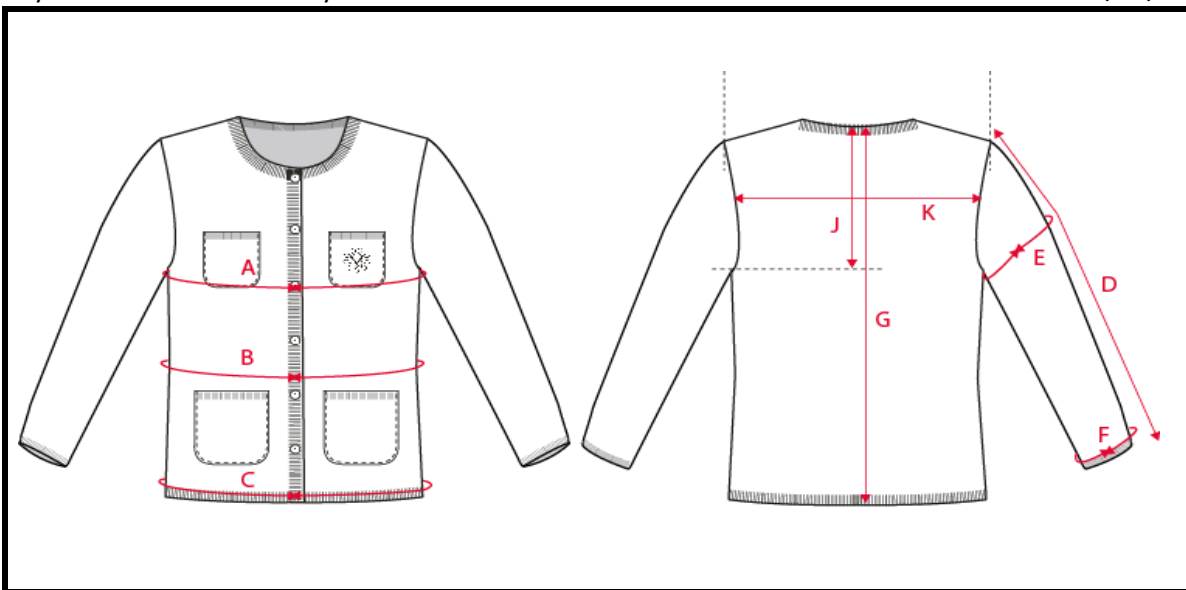
Style no: **W-CA-09**

Style:

**Womens CARDIGAN**

Date:

19/07/17



		XS	S	M	L	XL	2XL	3XL	4XL
A	1/2 Chest	42	46	50	54	58	62	66	70
B	1/2 Waist	38	42	46	50	54	61	65	69
C	1/2 Bottom	40	44	48	52	56	60	64	68
G	CB length	66	68	70	72	74	76	78	80
E	1/2 Bicep	16	17	18	19	20	21	22	23
J	Armholedepth, fr cb neck	23	24	25	26	27	28	29	30
H	Cross shoulder	34	36	38	40	42	44	46	48
D	Sleeve length	60	61	62	63	64	65	66	67
F	1/2 Sleeve opening	8	8,5	9	9,5	10	10,5	11	11,5
K	Neckwidth	16,5	17	17,5	18	18,5	19	19,5	20
L	Neckdrop front	11	11,5	12	12,5	13	13,5	14	14,5
M	Neckdrop back	1	1	1	1	1	1	1	1
	Tubular placket	2,2	2,2	2,2	2,2	2,2	2,2	2,2	2,2
	Tubular collar/neck "rib"	1,8	1,8	1,8	1,8	1,8	1,8	1,8	1,8
	Tubular cuff	1,8	1,8	1,8	1,8	1,8	1,8	1,8	1,8
	Tubular bottom	2,2	2,2	2,2	2,2	2,2	2,2	2,2	2,2
	Tubular top edge upper pocket	1,8	1,8	1,8	1,8	1,8	1,8	1,8	1,8
	Tubular top edge lower pocket	1,8	1,8	1,8	1,8	1,8	1,8	1,8	1,8
	Embroidery height	4	4	4	4	4	4	4	4
	Embroidery width	4	4	4	4	4	4	4	4
	Embroidery placement fr top edge pkt			3,3					