

# Component list

 Style no: **M-PO-08** Style: **Mens POLO shirt**

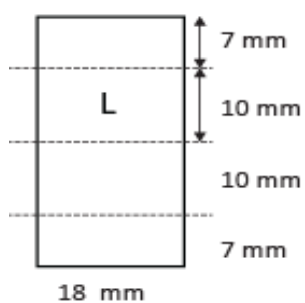
Date: 13/07/17

Material	Description	Placement	Amount
<b>Fabric</b>			
Mainfabric:			
Composition	100% combed cotton		
Composition	Piqueknit. 180-200 g/m2		
Colour	Middleblue melange		
Interlining:	Fused interling	front placket	
Ribbontape	Fishbonetape 30 mm. Tone in tone blue.	front placket	
<b>Trimmings</b>			
Thread; sewing and overlock	Core spun polyester. Colour: Tone in tone blue		
Logo	Embroidery tone in tone blue.		
Buttons	12 mm 4-hole polyester or polyamid 6.6 with narrow edge.	CF	3+1
	Tone in tone blue. Sparebutton on carelabel		
Mainlabel	Woven polyester satin label, grey with midblue letters	CB neck	1
Sizelabel	Woven polyester satin label, grey with midblue letters	CB neck	1
Carelabel	Woven polyester satin label, white with black print	Left sideseam	1

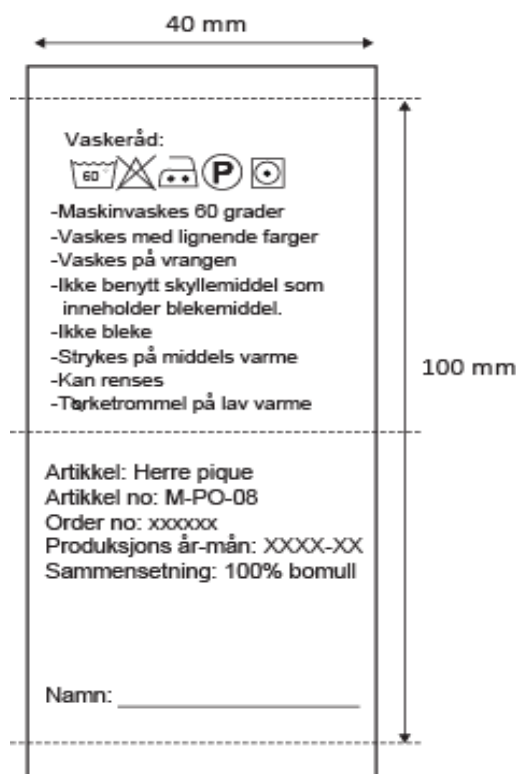
### Inside label



### Size label



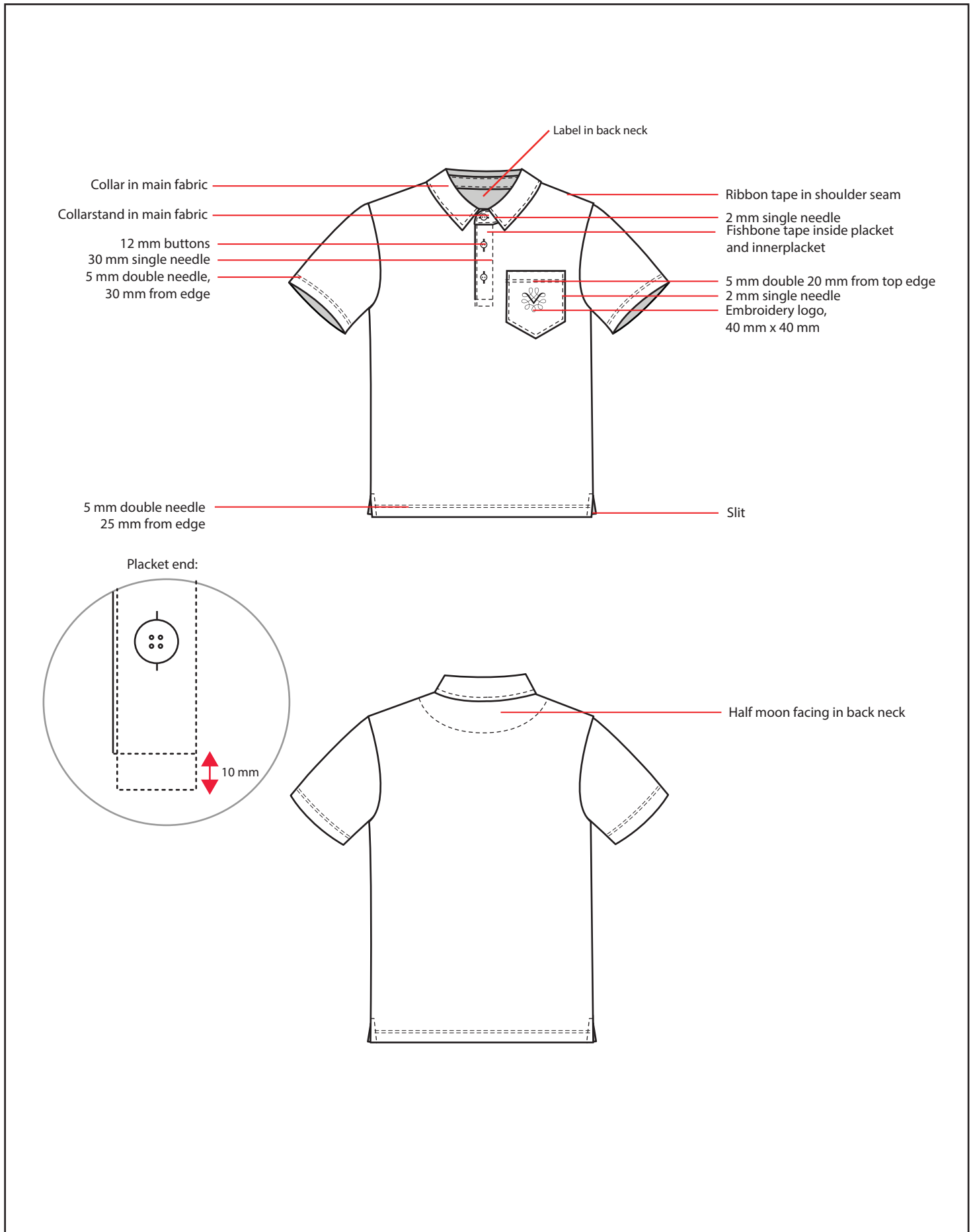
### Polo shirt: M-PO-08



# Technical specifications

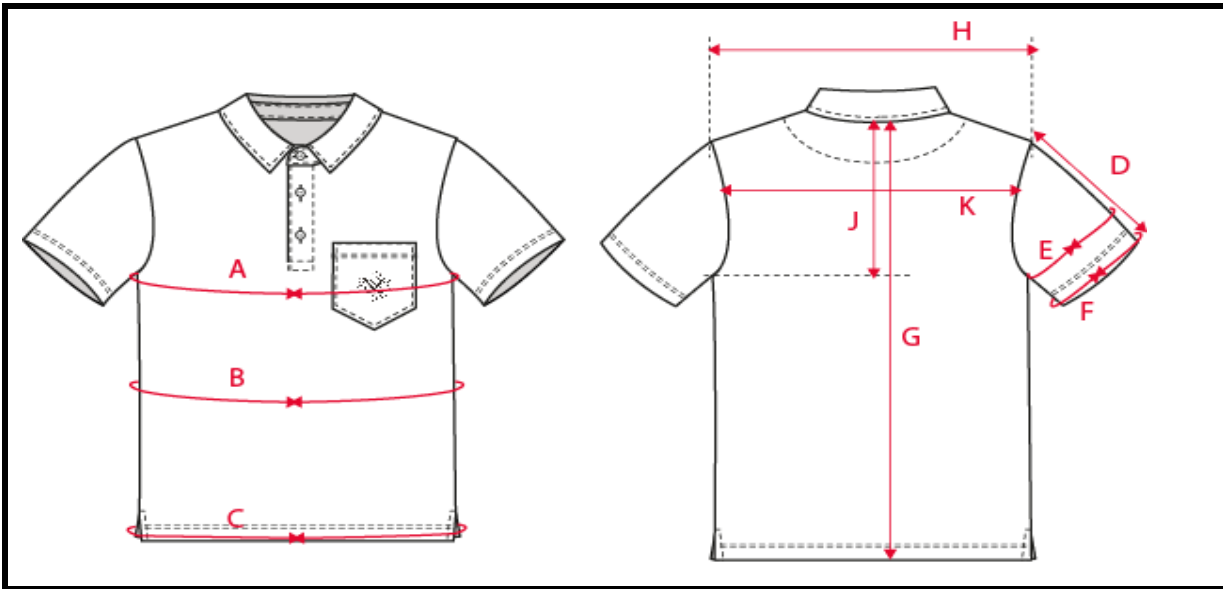
Style no: **M-PO-08**    Style: **Mens POLO SHIRT**

Date: 19/07/17



# Measurementlist

Style no: **M-PO-08**    Style: **Mens POLO shirt**    Date: **19/07/17**



		S	M	L	XL	2XL	3XL	4XL	5XL
A	1/2 Chest	49	53	57	61	65	69	73	77
B	1/2 Waist	49	53	57	61	65	69	73	77
C	1/2 Bottom	49	53	57	61	65	69	73	77
G	CB length	70	72	74	76	78	80	82	84
H	Cross shoulder	41	43	45	47	49	51	53	55
L	Neckdrop front	8	8,5	9	9,5	10	10,5	11	11,5
M	Neckdrop back	1	1	1	1	1	1	1	1
K	Neckwidth	18	18,5	19	19,5	20	20,5	21	21,5
	Collar height CB	4,5	4,5	4,5	4,5	4,5	4,5	4,5	4,5
	Collar stand CB	2,5	2,5	2,5	2,5	2,5	2,5	2,5	2,5
	Collar outer edge	41,5	43	44,5	46	47,5	49	50,5	52
	Collar length CF-CF	42,5	43,5	44,5	45,5	46,5	47,5	48,5	49,5
O	Collar point	6	6	6	6	6	6	6	6
D	Sleeve length	24	24,5	25	25,5	26	26,5	27	27,5
J	Armhole depth, fr cb neck	25	26	27	28	29	30	31	32
E	1/2 Bicep	19	20	21	22	23	24	25	26
F	1/2 Sleeve opening	16	17	18	19	20	21	22	23
N	Placket length	15	15,5	16	16,5	17	17,5	18	18,5
	Placket width	3	3	3	3	3	3	3	3
	Chest pkt placement fr HPS			19,5					
	Chest pkt placement fr CF			6					
	Chest pkt height			12,5					
	Chest pkt width			11,5					
	Embroidery height x width			4x4					
	Embroidery placement fr top pkt edge			3					
	Sideslit			5					