

Component list



VINMONOPOLET

Style no: **W-SH-04** Style: **Womens SHIRT short sleeve**

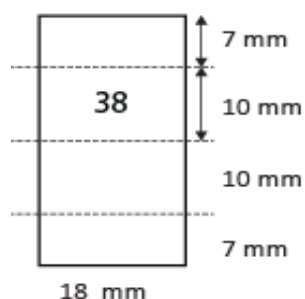
Date: 13/07/17

Material	Description	Placement	Amount
Fabric			
Mainfabric			
Composition	80% combed cotton 20% polyester		
Construction	150x70/40Sx45S Fine oxford. Open (not tight) construction for good air permeability. 125-130 g/m2. Easy care finish.		
Colour	Middle blue (customers own colour)		
Interlining	Fused interling, white	collar, cuff, CF	
Trimmings			
Thread; sewing and overlock	Core spun polyester. Colour: Tone in tone blue		
Logo	Embroidery logo tone in tone blue		
Buttons	12 mm 4-hole polyester or polyamid 6.6 with narrow edge. Tone in tone blue. Sparebutton on carelabel.	CF	8+1
Mainlabel	Woven polyester satin label, grey with midblue letter	CB neck	1
Sizelabel	Woven polyester satin label, grey with midblue letter	CB neck	1
Carelabel	Woven polyester satin label, white with black print	Left sideseam	1

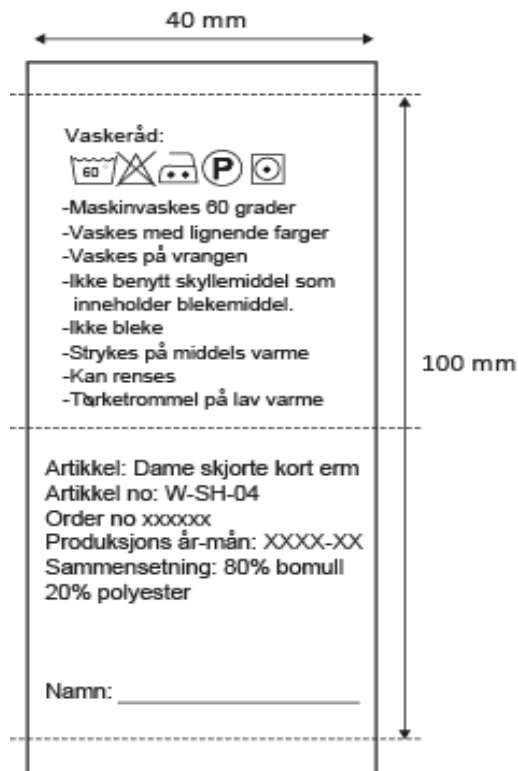
Inside label



Size label



Shirts: W-SH-04

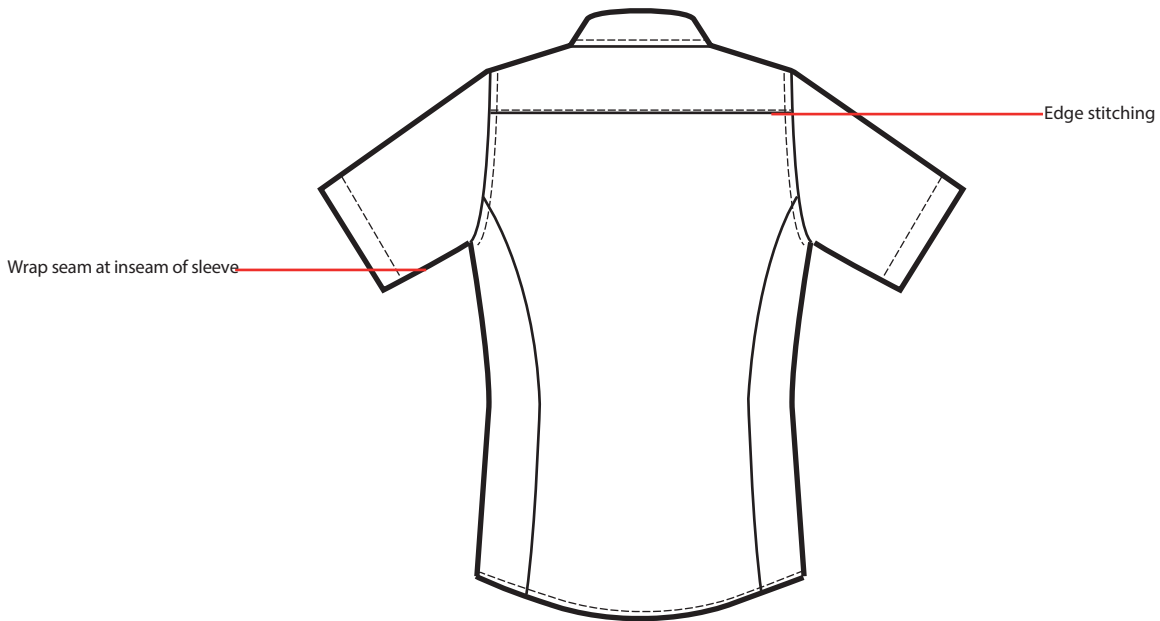
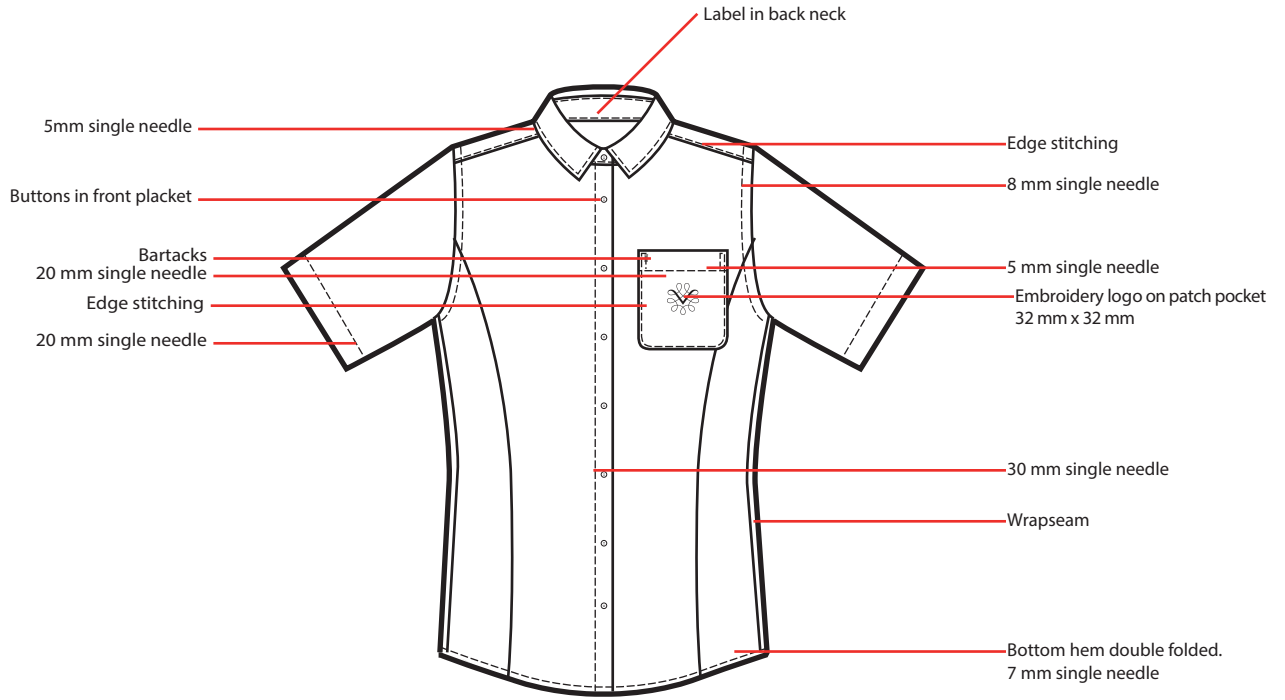


To be packed with stand-up in collar, folded with plastic gem/pins (no needles)

Technical specifications

Style no: **W-SH-04** Style: **Womens SHIRT short sleeve**

Date: 13/07/17



Measurementlist

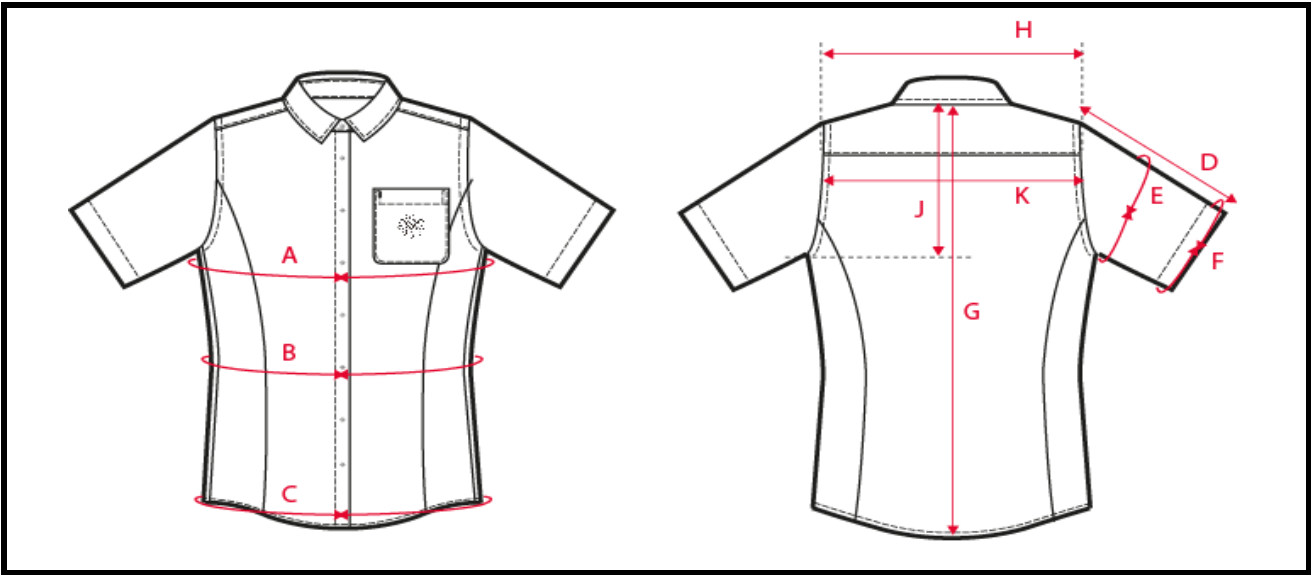


Style no: **W-SH-04**

Style:

Womens SHIRT - short sleeve

Date: 19/07/17



		32	34	36	38	40	42	44	46	48	50	52	54	56
H	Cross shoulder	37	38	39	40	41	42	43	44	45	46	47	48	49
K	Cross back, 15 cm fr CB neck	37	38	39	40	41	42	43	44	45	46	47	48	49
A	Chest, at armhole	91	95	99	103	107	111	115	119	125	131	137	143	149
B	Waist	80	84	88	92	96	100	104	108	115	122	129	136	143
C	Bottom width	94	98	102	106	110	114	118	122	128	134	140	146	152
G	Center Back length	68	69	70	71	72	73	74	75	76	77	78	79	80
	Neckwidth - seam to seam	13	13,5	14	14,5	15	15,5	16	16,5	17	17,5	18	18,5	19
	Back neckdrop- HPS to seam	0,5	0,5	0,5	0,5	0,5	0,5	0,5	0,5	0,5	0,5	0,5	0,5	0,5
	Front neckdrop- HPS to seam	8,5	9	9,5	10	10,25	11	10,75	11	11,25	11,5	11,75	12	12
	Collar length CF-CF	37	38	39	40	41	42	43	44	45	46	47	48	49
	Collar height at CB	4,5	4,5	4,5	4,5	4,5	4,5	4,5	4,5	4,5	4,5	4,5	4,5	4,5
	Collar stand height- at CB	3	3	3	3	3	3	3	3	3	3	3	3	3
	Collar point length- seam to	5,5	5,5	5,5	5,5	5,5	5,5	5,5	5,5	5,5	5,5	5,5	5,5	5,5
	Collar width- flat collar out	37,5	38,5	39,5	40,5	41,5	42,5	43,5	44,5	45,5	46,5	47,5	48,5	49,5
	Placket width	3	3	3	3	3	3	3	3	3	3	3	3	3
	Bk yoke Plcmt-straight bel	9	9	9	9	9	9	9	9	9	9	9	9	9
	Fr yoke Plcmt-meas along r	3,5	3,5	3,5	3,5	3,5	3,5	3,5	3,5	3,5	3,5	3,5	3,5	3,5
	1/2 armhole at front	18,6	19,4	20,2	21	21,8	22,6	23,4	24,2	25	25,8	26,6	27,4	28,2
D	Sleeve length	16	17	18	19	20	21	22	23	24	25	26	26	26
E	Bicep	34,5	36	37,5	39	40,5	42	43,5	45	47	49	51	53	55
F	Sleeve opening	30	31,5	33	34,5	36	37,5	39	40,5	42,5	44,5	46,5	48,5	51
	Curve difference between	5	5	5	5	5	5	5	5	5	5	5	5	5
	Number of buttons incl btn	8	8	8	8	8	8	8	8	8	8	8	8	8
	Button distance 1st and 2nd	5	5	5	5	5	5	5	5	5	5	5	5	5
	Button distance centre to c	8	8	8	8	8	8	8	8	8	8	8	8	8
	Pocket placement from HS	19,5	20	20,5	21	21,5	22	22,5	23	23,5	24	24,5	25	25,5
	Pocket width	10,5	11	11	11	11	11	11,5	11,5	12	12	12	12	12
	Pocket height	12	12,5	12,5	12,5	12,5	12,5	13	13	13,5	13,5	13,5	13,5	13,5