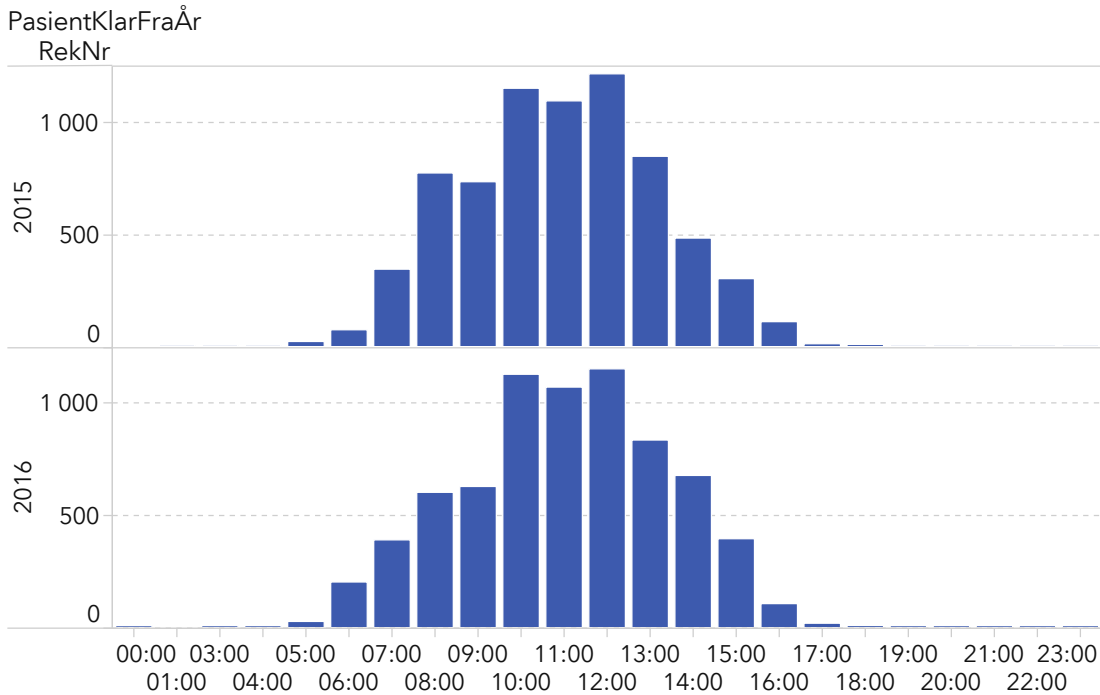
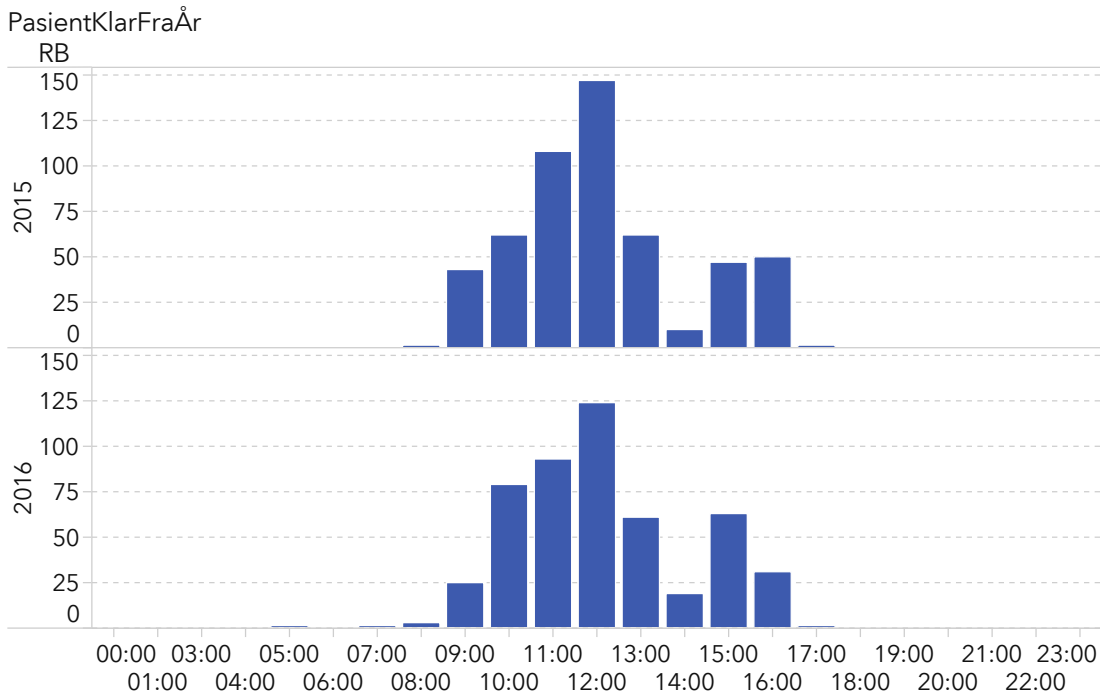


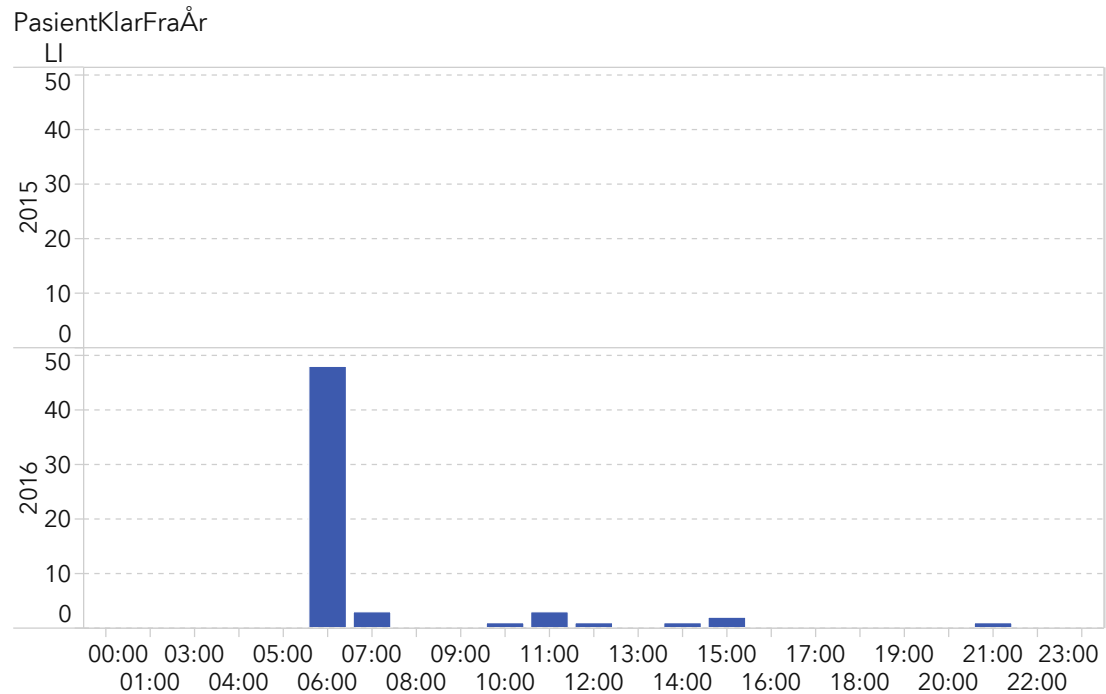
Time



▼ [AI.1](#)



▼ [AI.2](#)



▼ [AI.3](#)

[A1.1](#)

Rekvisisjoner

Filtre

PasientKlarFraÅr BetweenInclusive(2015; 2016)
PasientKontor = 'St. Olavs hospital'
TransportType = 'TAX'
Netto = 'Benyttet'
HenteKommune = 'BJUGN'

[A1.2](#)

Rekvisisjoner RB

Filtre

TransportType = 'TAX'
PasientKlarFraÅr BetweenInclusive(2015; 2016)
Netto = 'Benyttet'
HenteKommune = 'BJUGN'
PasientKontor = 'St. Olavs hospital'

[A1.3](#)

Rekvisisjoner LI

Filtre

PasientKlarFraÅr BetweenInclusive(2015; 2016)
HenteKommune = 'BJUGN'
TransportType = 'TAX'
Netto = 'Benyttet'
PasientKontor = 'St. Olavs hospital'