

Exhibit G - Company Provided Items and Services

Retrieval and redeployment of the instrument platforms must be designed such that IMR vessels may be used for this task.

"G.O. Sars"



Technical specifications

Shipyard:	Flekkefjord Slipp & Maskinfabrikk
Built:	2003
Length:	77.5 m
Beam:	16.4 m
GRT:	4 067 brt
Machinery:	Diesel electric, 8 100 kw
Top speed:	17 knots, cruising speed 11-13 knots
Accommodation:	19 single-berth, 13 double-berth cabins
Dynamic positioning:	Yes (class 1, no redundancy)
Winch - hangar SB side	Max load 7 tonnes (0-3500m)

Approximate lifting height
4m (not certified)

Cranes SB and PS deck 3 Max load 4 tonnes
Approximate lifting height 6m.

Gamma frame- aft Max load 8 tonnes

16mm wire winch, pull approximately 12 tonnes,
at 3000m 6 tonnes (not certified)

Heave compensation, per April 2016, only on scientific winch in the hangar for e.g. fiber optical cables (SB). New winches will be installed in 2016 (hangar, aft).

"Johan Hjort"



Technical specifications

Shipyard: Flekkefjord Slipp og
Maskinfabrikk AS

Built: 1990

Length: 64.4 m

Beam: 13.0 m

GRT: 1950 brt

Machinery: 2400 kw

Accommodation: 24 single, 5 double

Dynamic positioning: Yes (no class)

Cranes (SB): Max load 5 tonnes
No winch

A-frame/gamma frame (aft):Max load 10 tonnes
Winch max load 15 tonnes.

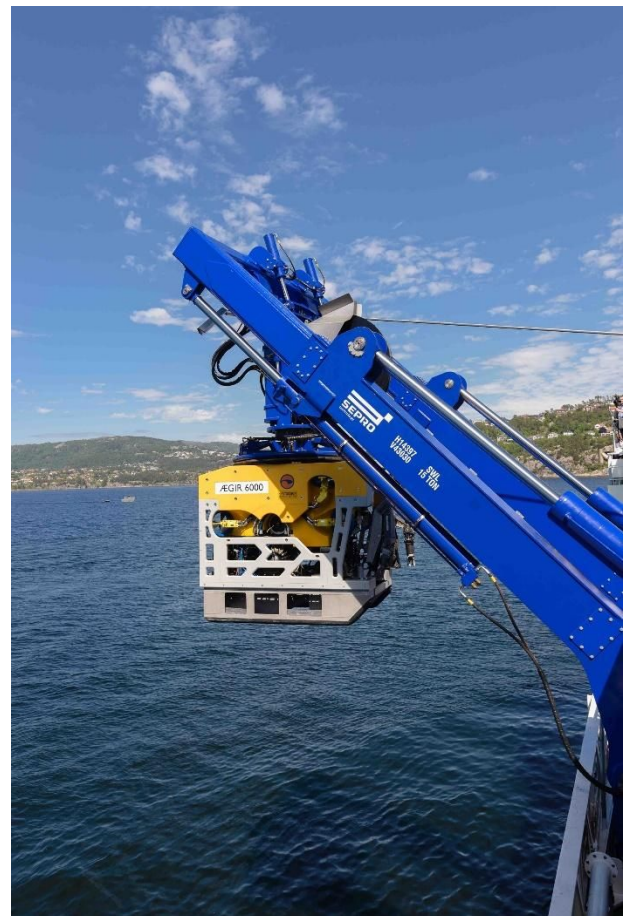
No active heave compensation on winches per April 2016.

ROV “ÆGIR 6000”

The “ÆGIR 6000” ROV is operated by UiB/IMR through the national infrastructure program NORMAR - Norwegian Marine Robotics Facility. More and up to date information about the ROV is available through NORMAR.

ÆGIR is a modified Supporter 4000 Mk2 manufactured by Kystdesign. It is a compact work class ROV (Norsok Class III B) equipped with two manipulator arms, one Schilling T4 and one Atlas. The control system have all standard controls and monitoring features (depth, altimeter, sonar, HD cameras, heading, Doppler Velocity Logs, transponders for HiPAP, inertial navigation system).

G.O.Sars has a complete control setup for piloting the ROV. The NORMAR infrastructure also includes control, workshop, PDU containers



for the ROV, winch, TMS.

Power	95 Kw
Depth rating	6000 m
Dimensions	2.75x1.7x1.7 (LxWxH m)
Tare weight (approx.)	3400 kg
Payload (in water, approx.)	200 kg
Through frame lifting capacity	3000 kg