

Exhibit F: Drawings

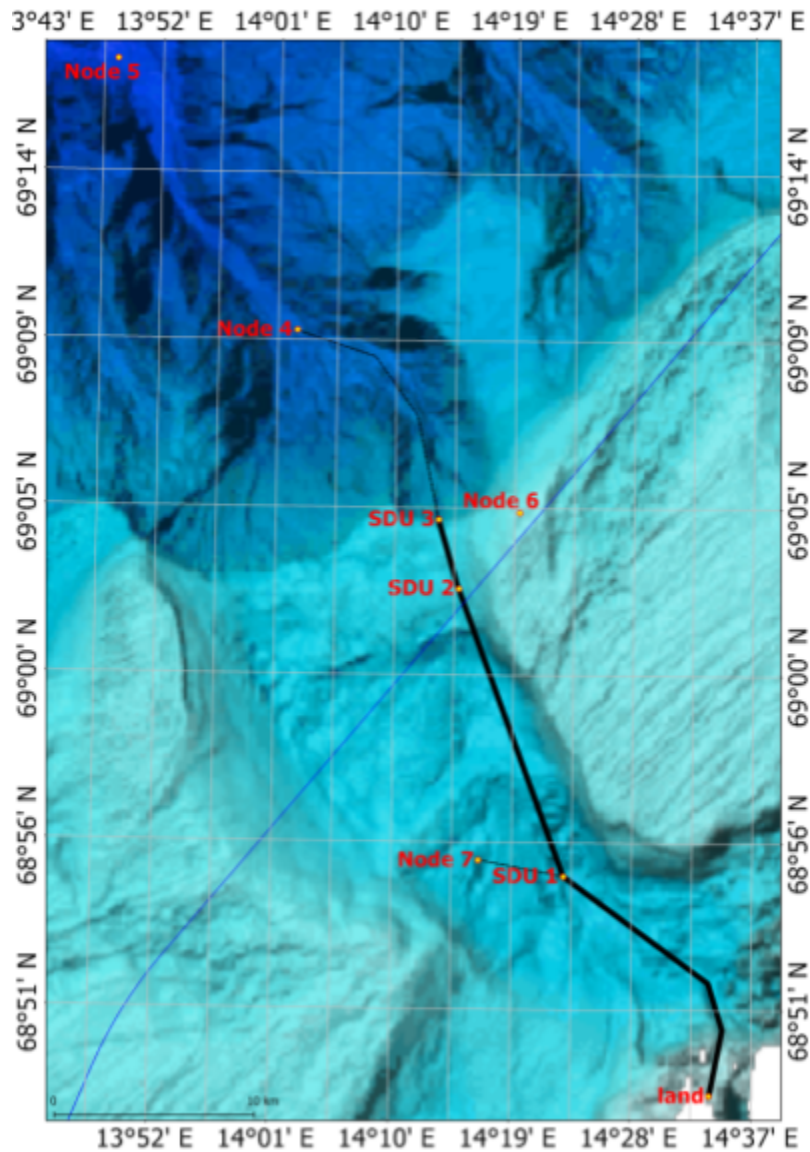
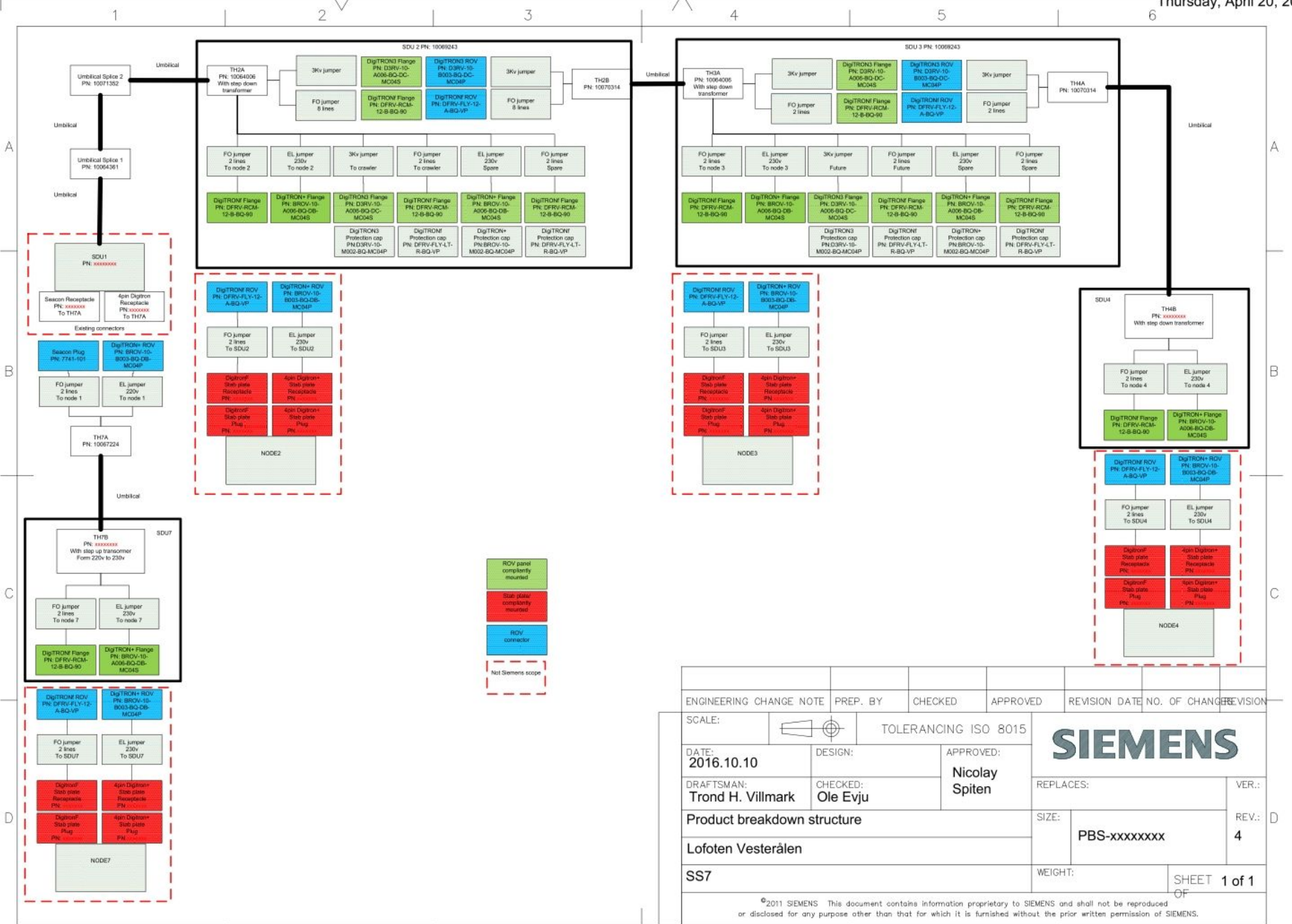


Figure 1. Overview of LoVe. Node connections are fiberoptical plus electrical power, except for nodes 5 and 6 for which both wired and wireless connections are accepted. The blue line shows the 12 mile limit of territorial waters.



ENGINEERING CHANGE NOTE	PREP. BY	CHECKED	APPROVED	REVISION DATE	NO. OF CHANGES	REVISION
SCALE:	TOLERANCING ISO 8015					
DATE: 2016.10.10	DESIGN:	APPROVED: Nicolay Spiten				
DRAFTSMAN: Trond H. Villmark	CHECKED: Ole Evju	REPLACES:		VER.:	D	
Product breakdown structure			SIZE: PBS-xxxxxxx	REV.: 4		
Lofoten Vesterålen			WEIGHT:	SHEET 1 of 1		
SS7			OF			

**Figure 2. Breakdown structure LoVe. High resolution file attached (Visio-LoVe PBS Rev4.pdf).**