

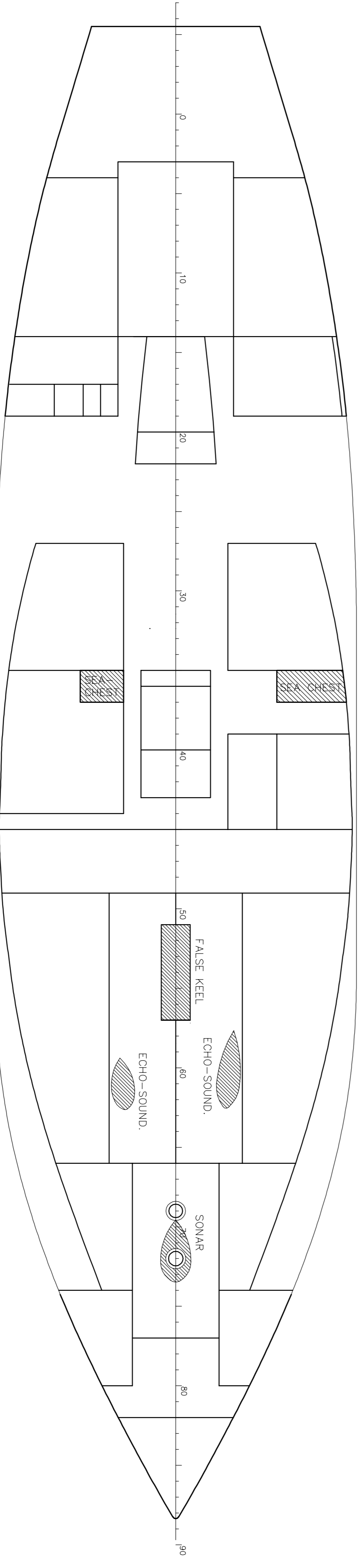
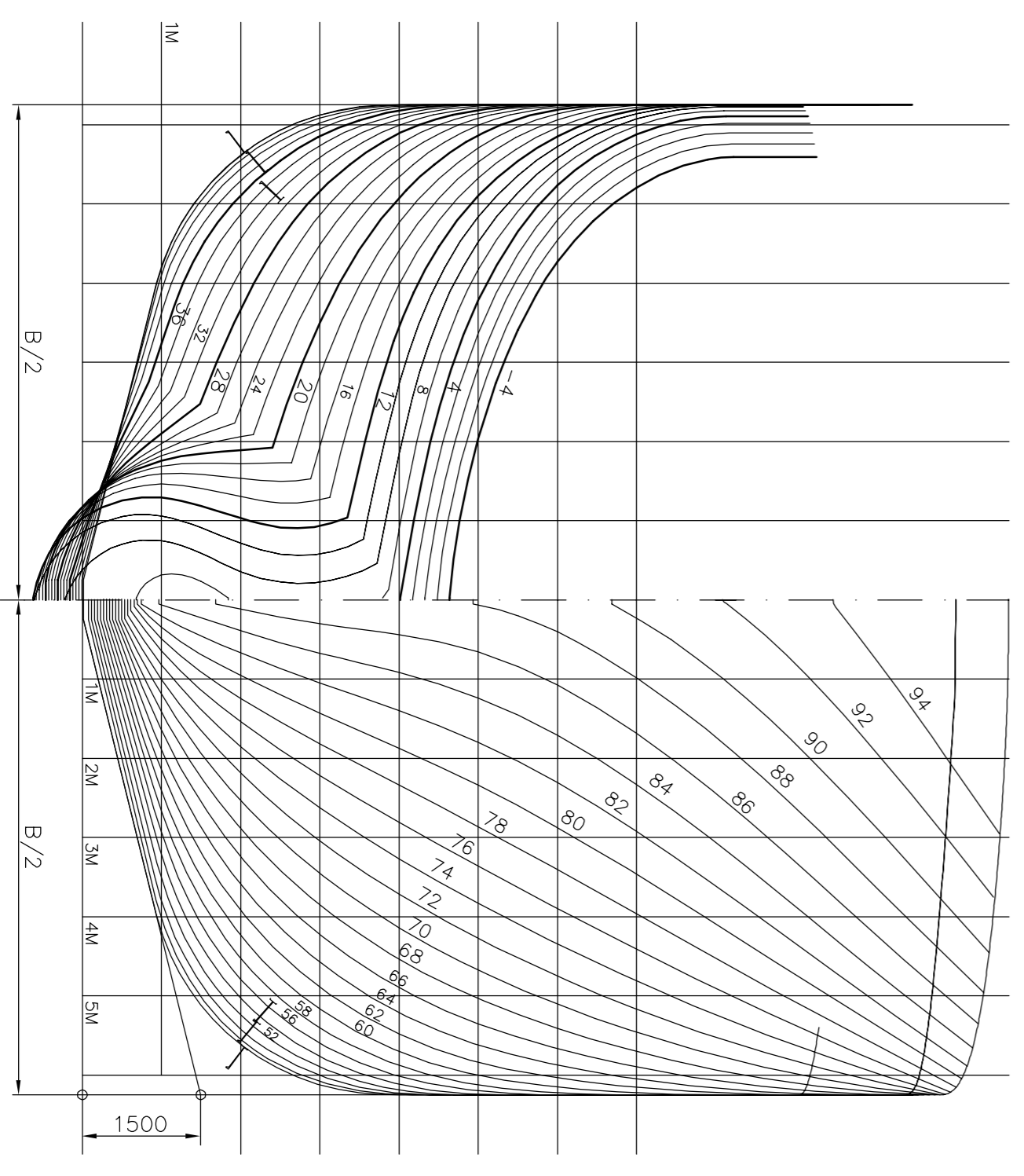
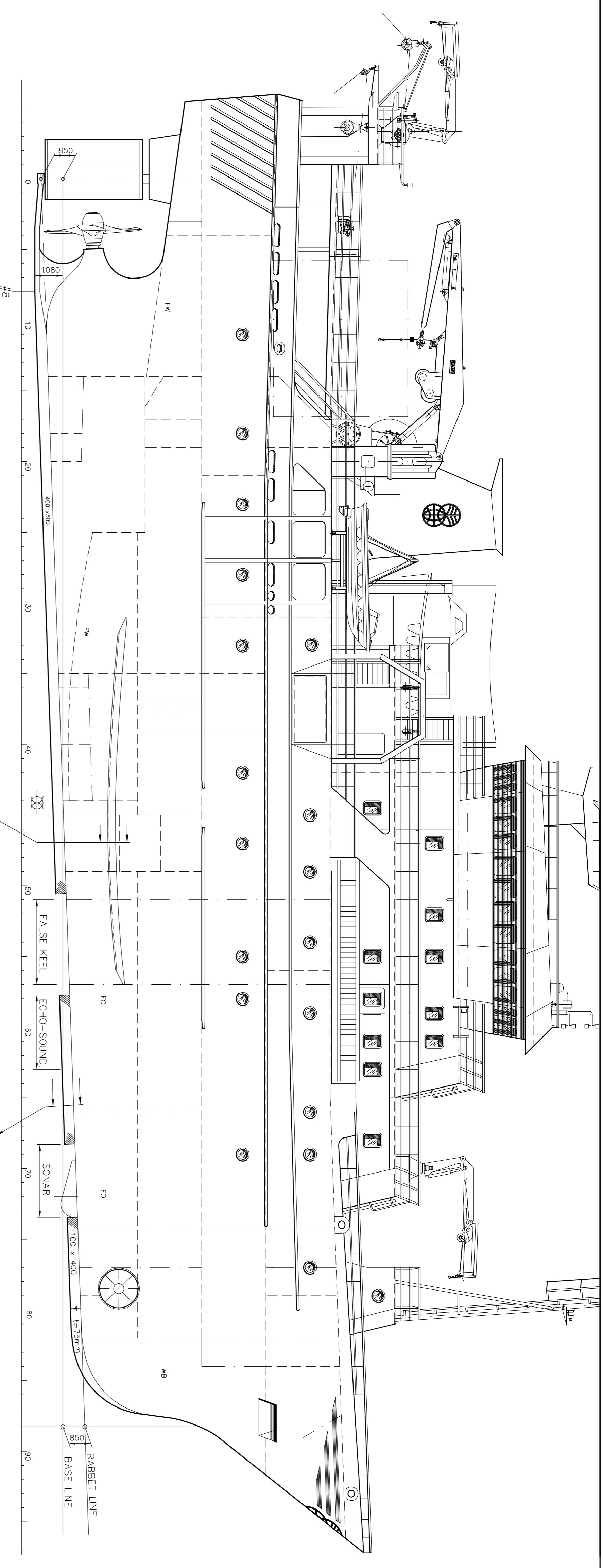
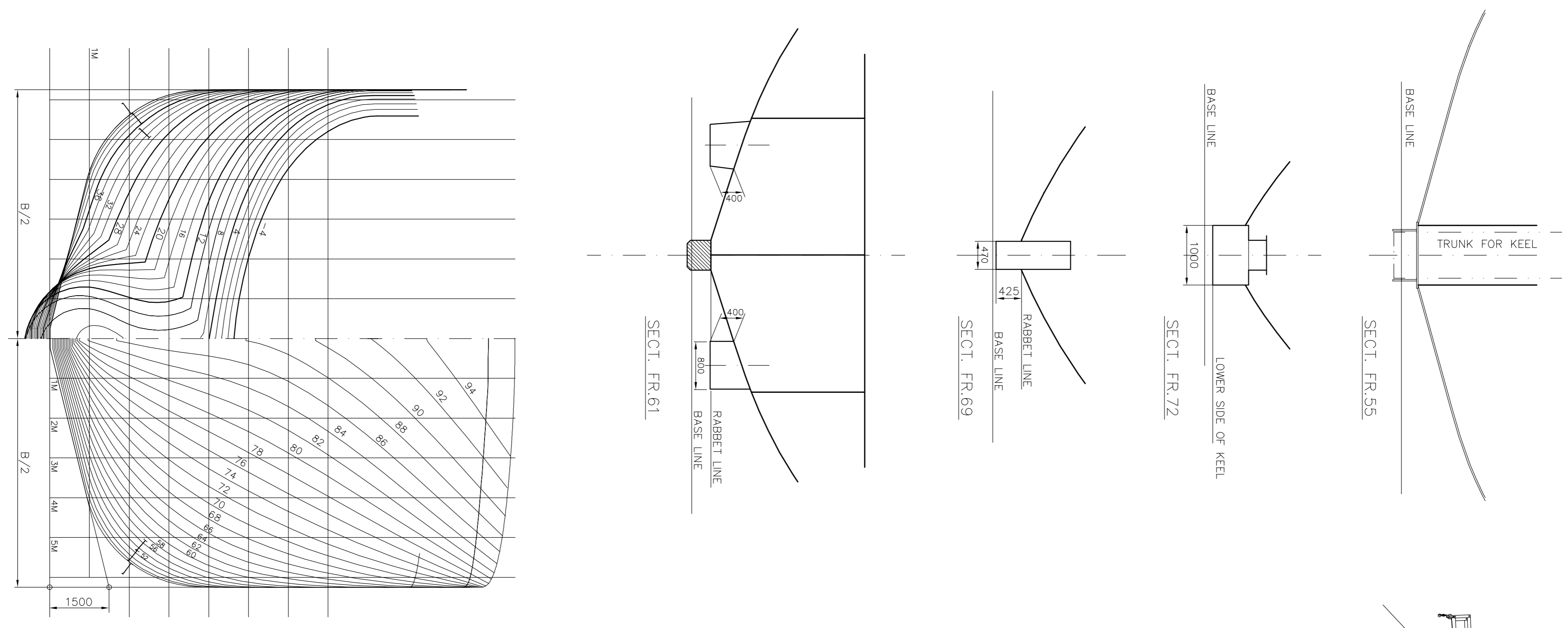


F/F «Kristine Bonnevie»



1. GENERELT OM FARTØYET

IMO nr	9062334
Kjenningsbokstaver	LGWS
Lengde over alt	56.75 m
Lengde mellom p.p.	48.55 m
Bredde (moulded)	12.50 m
Brutto Tonnasje	1444 TE
Hovedmotor	Wartsila NSD, 6L28B, serie no: 6077
Hjelpemotor 1 og 2	Cummins K-19, serie no: 37228771/37228722
Gir	VOLDA ACG 750 w/PF 600 – 2 speed, inst.NO: 1006, year 1993
Akselgenerator	LEROY SOMER LSA 50 L8- 1200KVA
Coupling	Vulkan, byggnr: 2920
Fartøyet har senkekjøl	
Dyppgående ved Dokking Aft:	7m F: 4,6



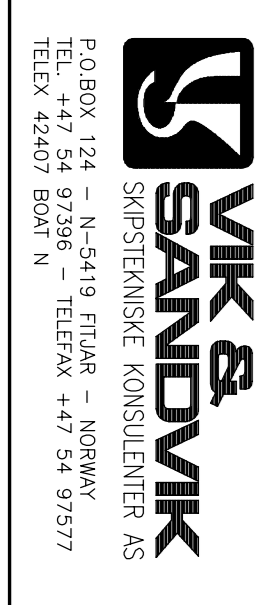
PRINCIPAL PARTICULARS

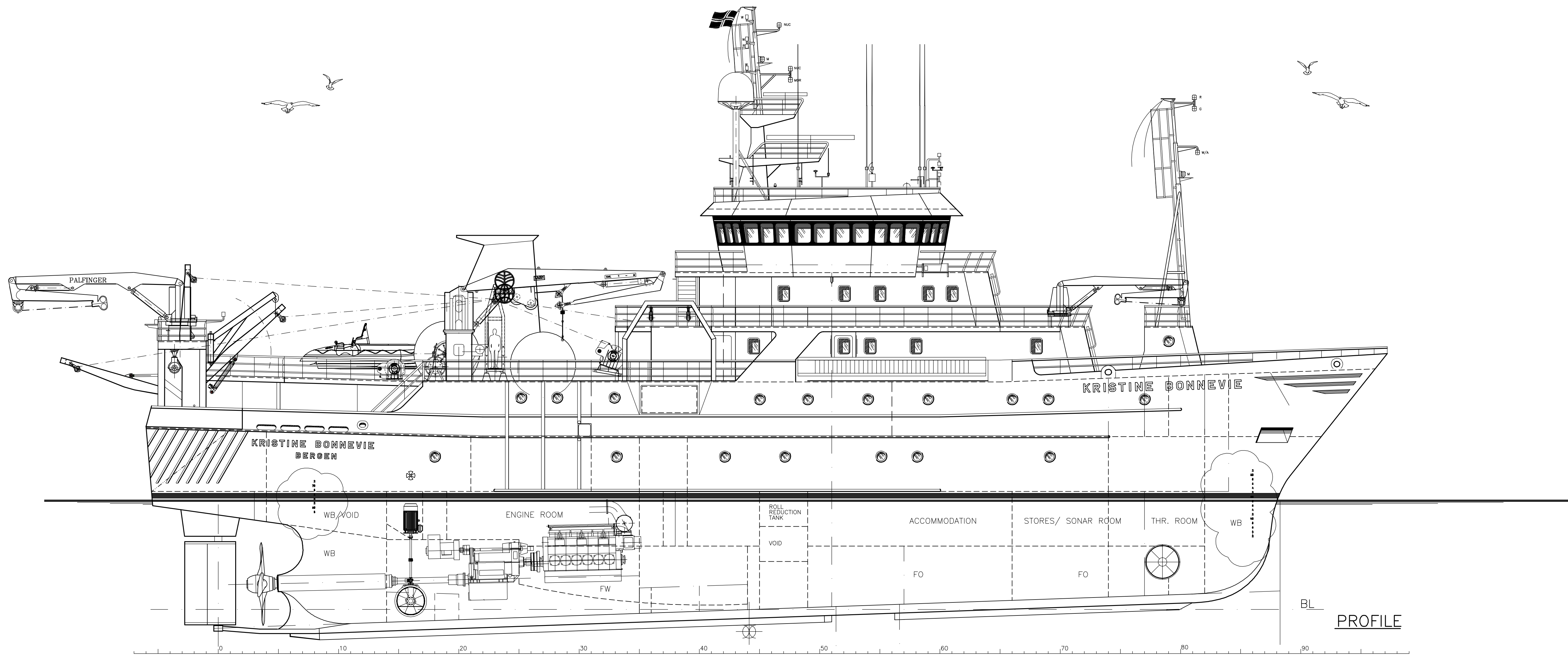
LENGTH OVER ALL:	56,75 m
SCANTLING LENGTH:	49,60 m
LENGTH BETW. PERP.:	48,55 m
BREADTH MOULDED:	12,50 m
DEPTH TO MAINDECK MOULDED:	5,40 m
DEPTH TO SH. DECK MOULDED:	7,90 m
SCANTLING DRAUGHT:	5,40 m
FRAME SPACING:	0,55 m
BLOCK COEFFICIENT AT 5,40 m:	0,52

Rev.	Description	Date	Sign.

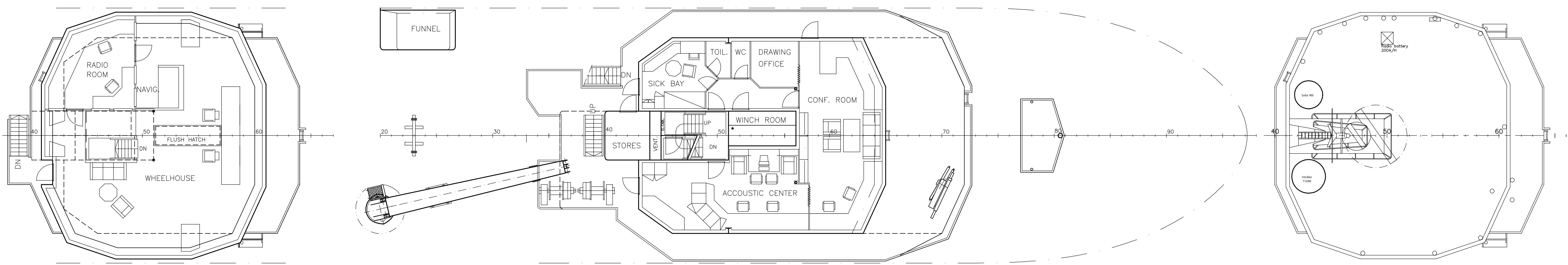
Approved Class	Date	Approved Owner	Date
Approved Authorities	Date	Checked V & S	Date

56.75 m	Yard No 152
RESEARCH VESSEL	Flekkerfjord slipp & Maskinfabrik A/S
DOCKING PLAN	10.12.92
1:100	1:50
Scale	Date
Substitution for	Substituted by
1538	E. R.
144 - HP88	
0	





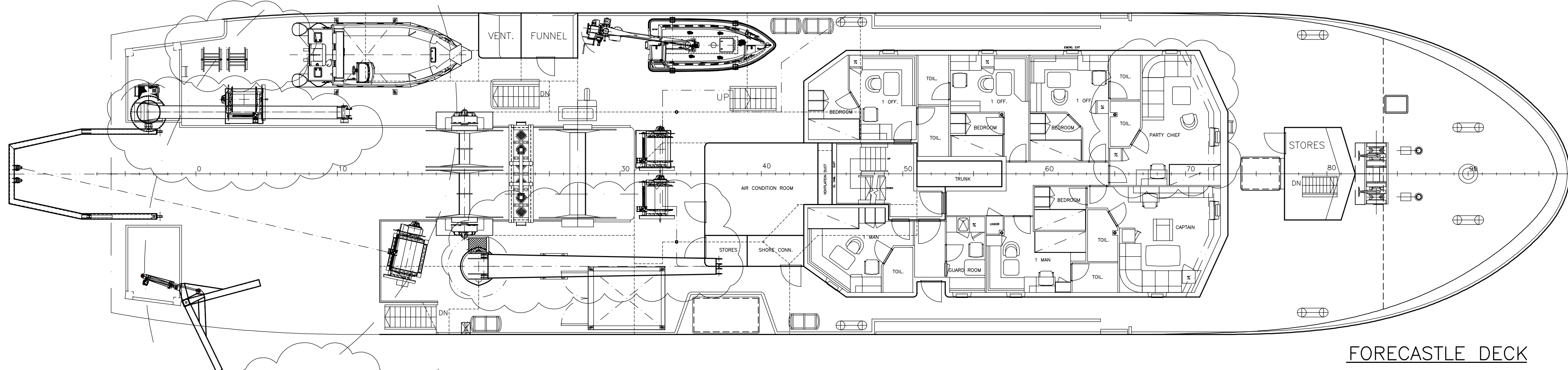
PROFILE



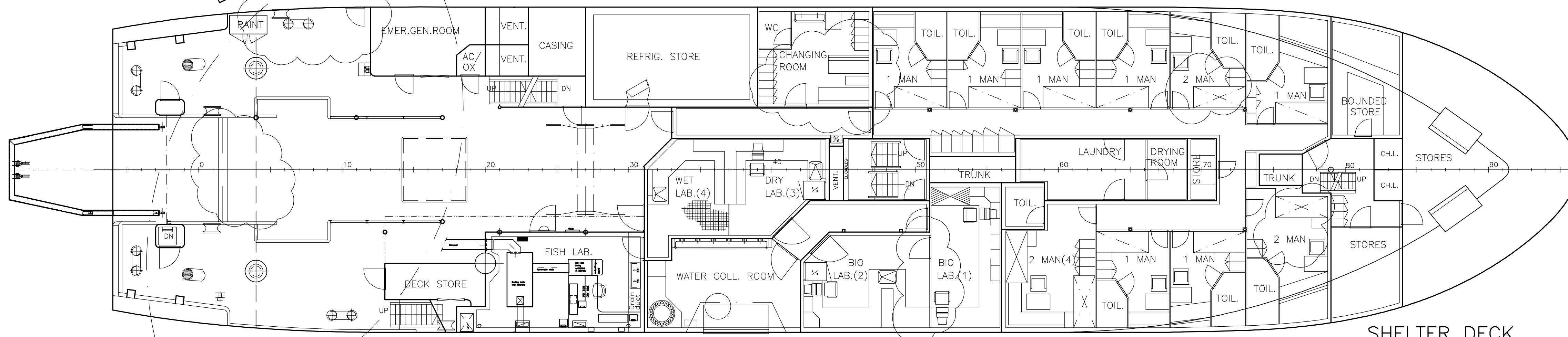
BRIDGE DECK

BOAT DECK

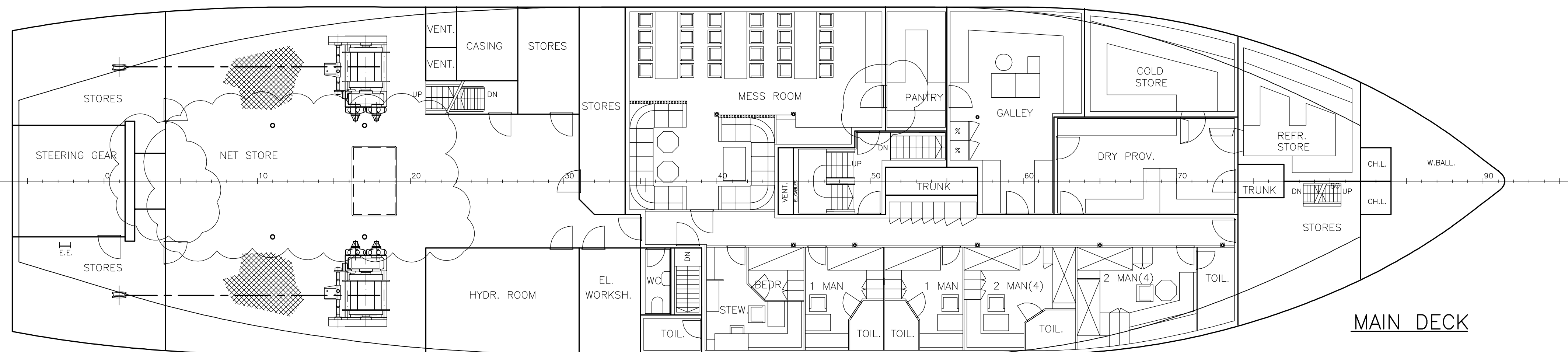
TOP VIEW ON WHEELHOUSE



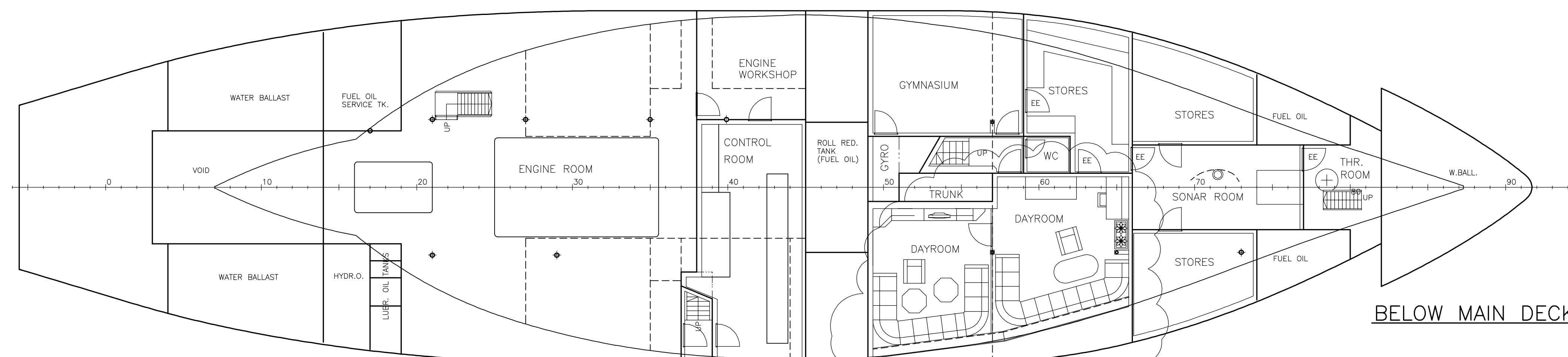
FORECASTLE DECK



SHELTER DECK



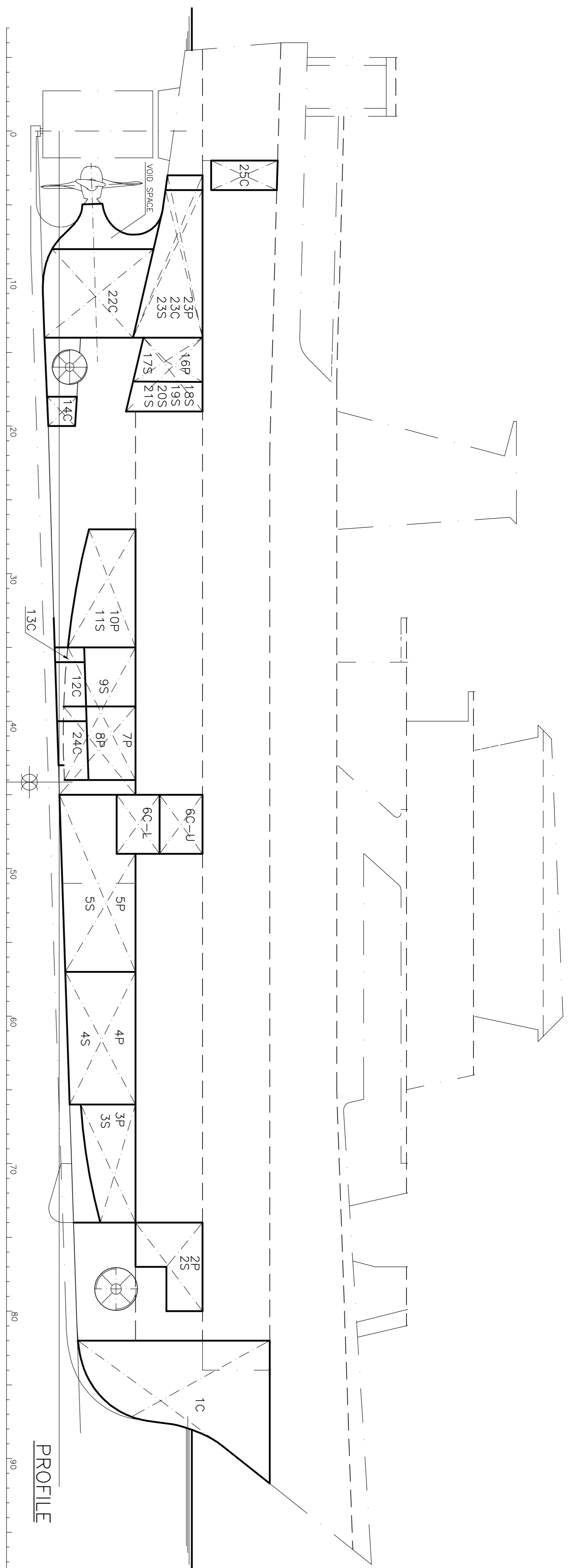
MAIN DECK



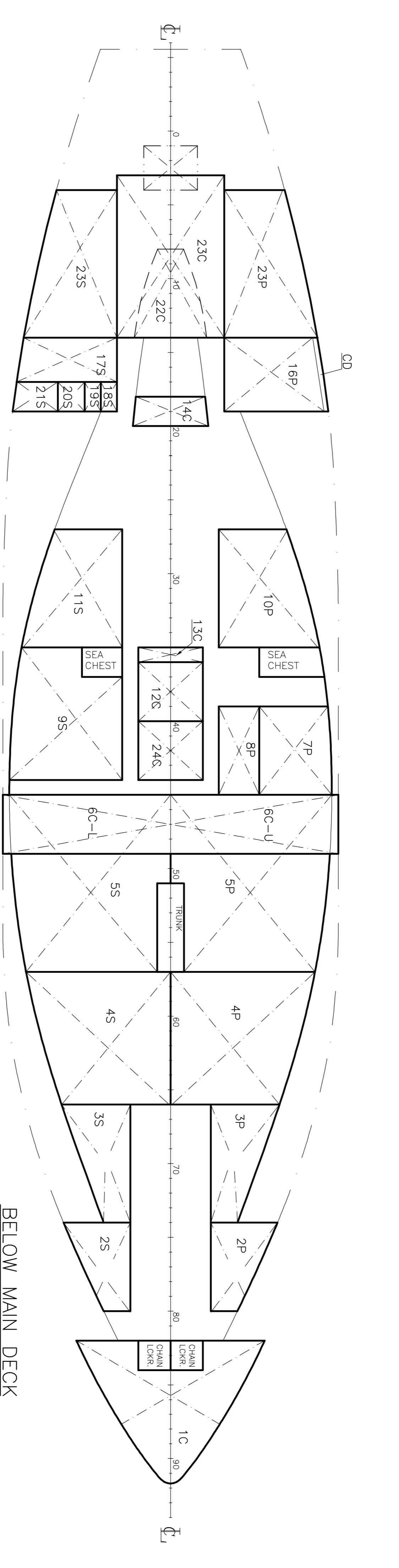
BELOW MAIN DECK

PRINCIPAL PARTICULARS	
LENGTH OVER ALL:	56.75 m
LENGTH BETWEEN PERP:	48.55 m
BREADTH MOULDED:	12.50 m
DEPTH TO MAIN DECK:	5.40 m
DEPTH TO SHELTER DECK:	7.90 m
FRAME SPACING:	0.55 m

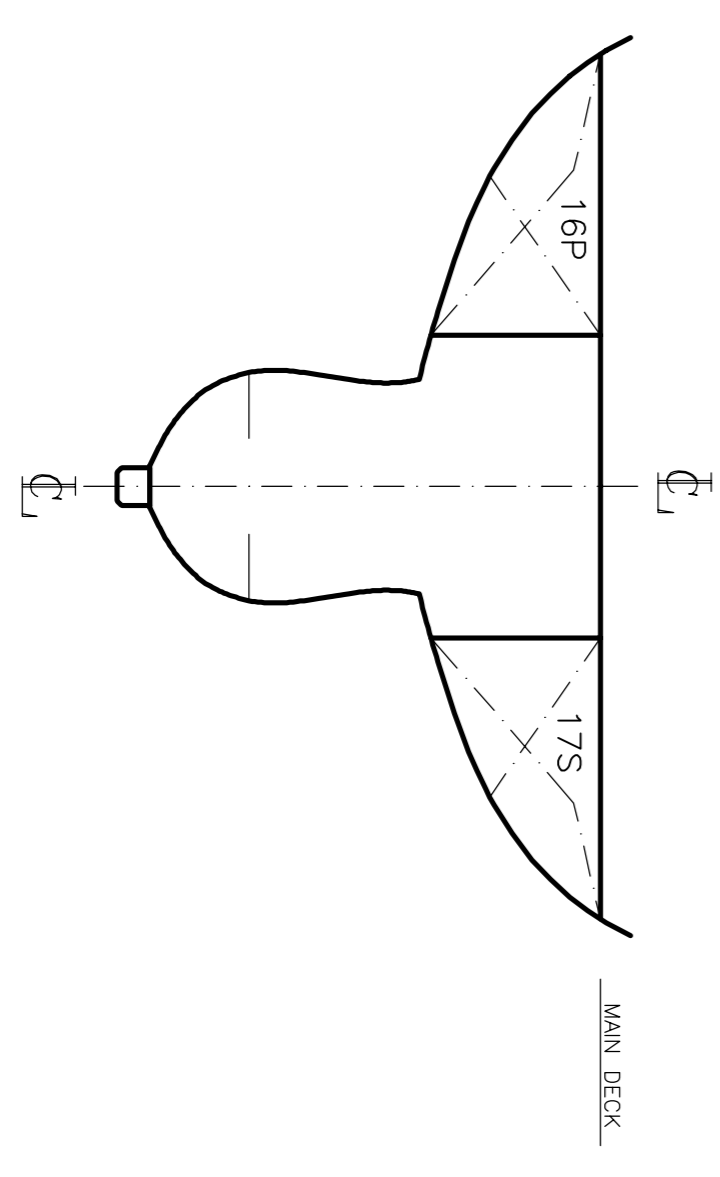
Approval/Class/Date	Approval/Date	Approval/Date	Approval/Date	Approval/Date	Approval/Date	Checked/Date
RESEARCH VESSEL 56,75 m		Yard no 1538 FLAKKJØRD SLIPP & MARKSPARKEN A/S FlakkjØrd NORWAY		DATE: 08.01.82	DTI: 101	REV: J
GENERAL ARRANGEMENT		SCALE: 1:100	FORMAT: A0	READY FOR NC/ISO	WARTSILA PROJECT NO. 1538	SHEET 1/1
WARTSILA		Wartsila Ship Design 5419 P.O. Box FIN-00561 HELSINKI FIN-44125 OSLO FIN-00010 HELSINKI		DRAWING NO. 101-BF221		MP



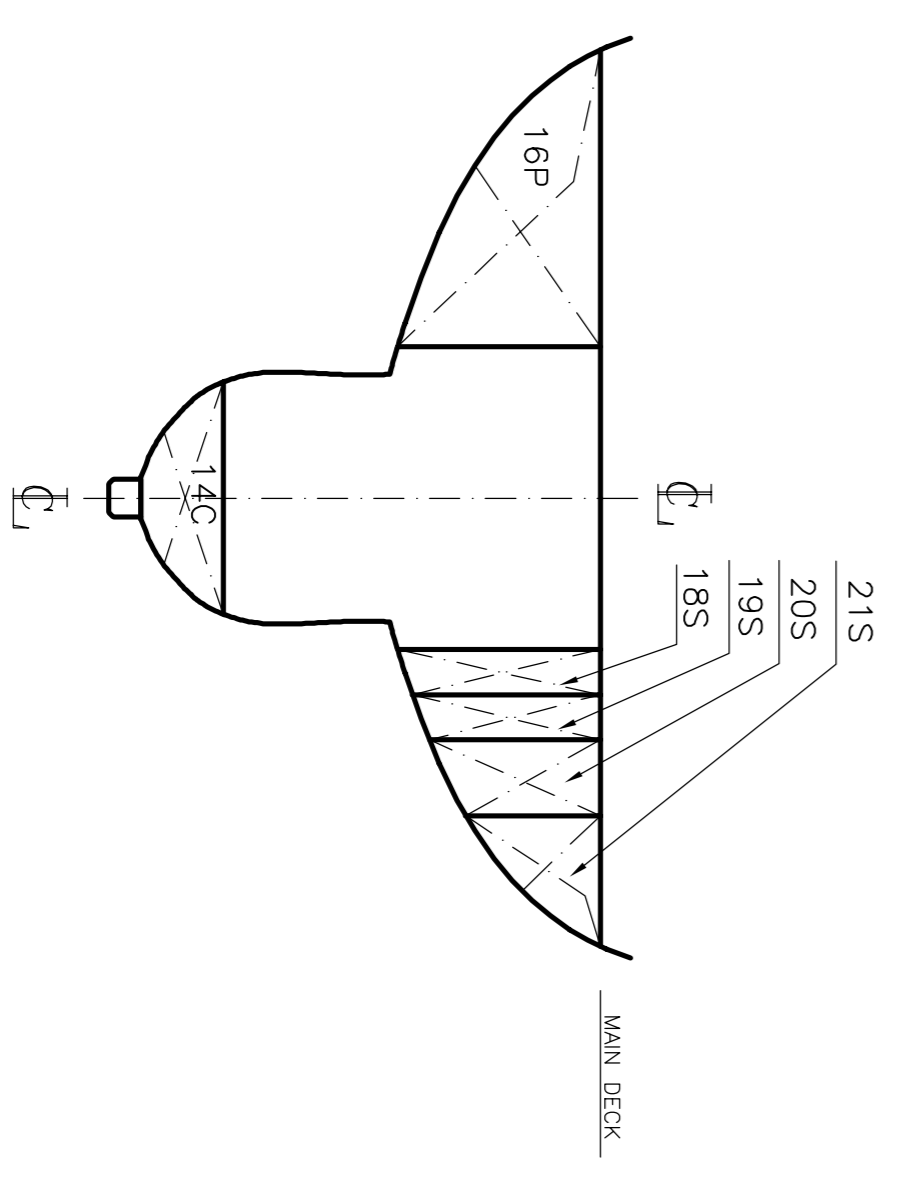
PROFILE



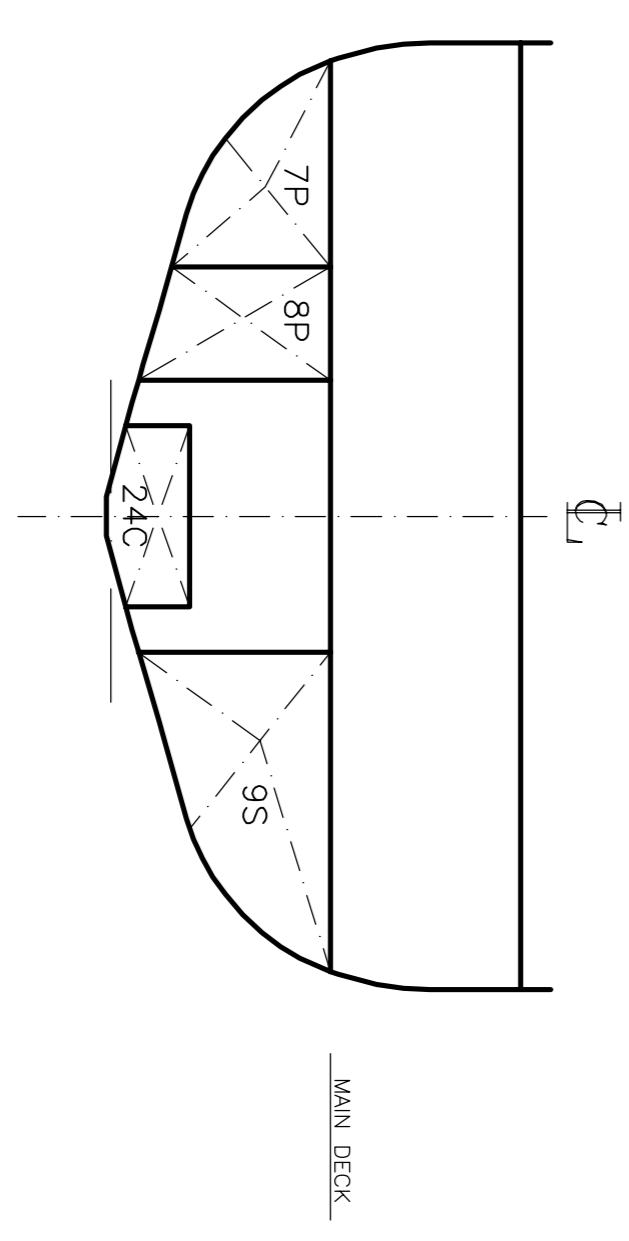
BELOW MAIN DECK



SECTION BETWEEN FRAMES 14 & 15



SECTION BETWEEN FRAMES 18 & 19



SECTION BETWEEN FRAMES 41 & 42

Tank Status

Tank Name	Spgr	Weight (MT)	LCG (m)	TCG (m)	VCG (m)	Volume (m ³)	Max FSM (MT-m)
SALT WATER							
AFRPeak_22c	1.025	22.86	6.2711	1.366	22.3	3.70	
BV_25RS P	1.025	18.34	5.4871	3.2126	4.808	15.9	
FW_25RS S	1.025	38.34	4.7529	8.357	32.9	48.6	
Subtotals:	1.025	91.76	21.5471	0.000	4.565	69.2	81.73

FUEL OIL

Tank Name	Spgr	Weight (MT)	LCG (m)	TCG (m)	VCG (m)	Volume (m ³)	Max FSM (MT-m)
DAY_16 P	0.870	19.39	8.1671	3.5529	4.46	15.4	9.54
FO_25B P	0.870	7.44	41.5281	2.2326	4.475	8.8	1.80
FO_35S P	0.870	6.83	38.0531	2.2029	2.393	7.9	2.62
FO_35S S	0.870	6.83	38.0531	2.2029	2.393	7.9	2.62
FO_45S P	0.870	34.16	33.0621	1.6599	1.920	39.3	41.32
FO_45S S	0.870	34.16	33.0621	1.6599	1.920	39.3	41.32
FO_55B P	0.870	62.36	28.0711	2.448	1.725	67.23	67.23
FO_55B S	0.870	37.70	25.8501	0.000	4.60	43.3	308.55
Subtotals:	0.870	252.59	29.8051	0.1889	2.548	290.4	542.32

GEN-FO.

Tank Name	Spgr	Weight (MT)	LCG (m)	TCG (m)	VCG (m)	Volume (m ³)	Max FSM (MT-m)
Emerg gen TKp	0.870	0.78	17.051	4.8459	5.185	0.9	0.92

GREW.

Tank Name	Spgr	Weight (MT)	LCG (m)	TCG (m)	VCG (m)	Volume (m ³)	Max FSM (MT-m)
GreyWTK_7 p	1.000	12.88	23.1421	4.3779	2.098	12.9	5.48

SEPTIC.

Tank Name	Spgr	Weight (MT)	LCG (m)	TCG (m)	VCG (m)	Volume (m ³)	Max FSM (MT-m)
SepticTK_8 p	1.000	11.23	23.1071	2.5279	1.746	11.2	0.91

FRESH WATER

Tank Name	Spgr	Weight (MT)	LCG (m)	TCG (m)	VCG (m)	Volume (m ³)	Max FSM (MT-m)
FW_10 P	1.000	19.36	17.3001	3.1129	2.125	19.4	16.57
FW_11 S	1.000	19.36	17.3001	3.1129	2.125	19.4	16.57
FW_8 S	1.000	30.48	27.0621	3.5615	1.957	30.5	25.34
Subtotals:	1.000	69.20	19.3981	1.5698	2.051	69.2	58.48

WAS-FEOL.

Tank Name	Spgr	Weight (MT)	LCG (m)	TCG (m)	VCG (m)	Volume (m ³)	Max FSM (MT-m)
WASFEOL_12 c	0.940	4.84	20.8021	0.000	0.483	5.1	2.35

FUEL DRAIN.

Tank Name	Spgr	Weight (MT)	LCG (m)	TCG (m)	VCG (m)	Volume (m ³)	Max FSM (MT-m)
FO_Drain_13 c	0.870	1.11	19.5291	0.000	0.489	1.3	0.54

SLUDGE.

Tank Name	Spgr	Weight (MT)	LCG (m)	TCG (m)	VCG (m)	Volume (m ³)	Max FSM (MT-m)
Sludge_14 c	0.940	2.92	10.4491	0.000	0.227	3.1	2.83

HYDRO OIL.

Tank Name	Spgr	Weight (MT)	LCG (m)	TCG (m)	VCG (m)	Volume (m ³)	Max FSM (MT-m)
HydroL_17 s	0.924	8.33	8.5691	3.4286	4.526	9.0	6.41
HydroL_18 S	0.924	2.99	9.9091	2.5926	4.199	3.1	0.14
Subtotals:	1.122	8.5071	3.2125	4.441	12.1	6.56	

LUBE OIL.

Tank Name	Spgr	Weight (MT)	LCG (m)	TCG (m)	VCG (m)	Volume (m ³)	Max FSM (MT-m)
LUBOIL_20 s	0.924	2.02	9.9121	3.6896	4.396	2.2	0.08
LUBOIL_21 s	0.924	1.82	9.9231	4.9276	4.795	2.0	0.41
Subtotals:	3.84	9.9171	4.2258	4.561	4.2	0.49	

OIL WATER.

Tank Name	Spgr	Weight (MT)	LCG (m)	TCG (m)	VCG (m)	Volume (m ³)	Max FSM (MT-m)
TK24 c	1.000	5.18	23.1021	0.000	0.557	5.2	2.50

BILGE WATER.

Tank Name	Spgr	Weight (MT)	LCG (m)	TCG (m)	VCG (m)	Volume (m ³)	Max FSM (MT-m)
TK25 c	1.000	5.31	1.6591	0.000	8.665	5.3	0.72

VOID

Name	Spgr	Weight (MT)	LCG (m)	TCG (m)	VCG (m)	Volume (m ³)	Max FSM (MT-m)
FW_25C c	1.000	38.98	5.0521	0.000	4.547	39.0	31.78
Low_25RS c	1.000	41.89	25.8471	0.000	3.011	41.9	348.58
Subtotals:	80.95	15.8171	0.000	3.751	80.9	380.34	

All Tanks

Tanks	Spgr	Weight (MT)	LCG (m)	TCG (m)	VCG (m)	Volume (m ³)	Max FSM (MT-m)
Tanks		553.776	23.6531	0.0468	3.017	591.3	1.09539

FSM Notes
 1. The above table indicates the Maximum Free Surface Moment of any load at the present heel and trim. It may not be the current FSM.

Updated acc. to Stab documentation	27.10.16	OH
Rebuilding 2016	10.05.16	OH
Contr. acc. to Owner / Yard	02.02.16	BO
Div. CORR.	07.01.15	PK
Div. CORR.	18.09.12	JOM
AFTER PEAK TK. 6.4	02.09.12	E.H.
Div. CORR.	17.08.12	PK
Description	17.08.12	PK

Approved Owner/Date	Approved/Date	Approved/Date
Yard no 168 SHIP & RESEARCH VESSEL	Yard no 168 SHIP & RESEARCH VESSEL	Yard no 168 SHIP & RESEARCH VESSEL
56,75 m	56,75 m	56,75 m
TANK PLAN	TANK PLAN	TANK PLAN
SCALE 1:100	DATE 09.01.12	SHEET 171
WÄRTSILA	WÄRTSILA PROJECT NO. 1538	REVISION 171-HJ18
Wärtsilä Ship Design	4519 Hvala, Kopavik	171-HJ18
TEL +47 23 48 70 00	4519 Hvala, Kopavik	171-HJ18
WWW.WARTSILA.COM	4519 Hvala, Kopavik	171-HJ18