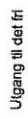


# Etasje: U

## Symboler:



Rømningsretning



Utgang til deli fri



Angrepsvei



Håndskiocker



Brannslange

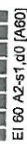


Brannalarmcentral

## Veggbetegnelser:



EI 90 A2-s1,d0 [A90]



EI 60 A2-s1,d0 [A60]

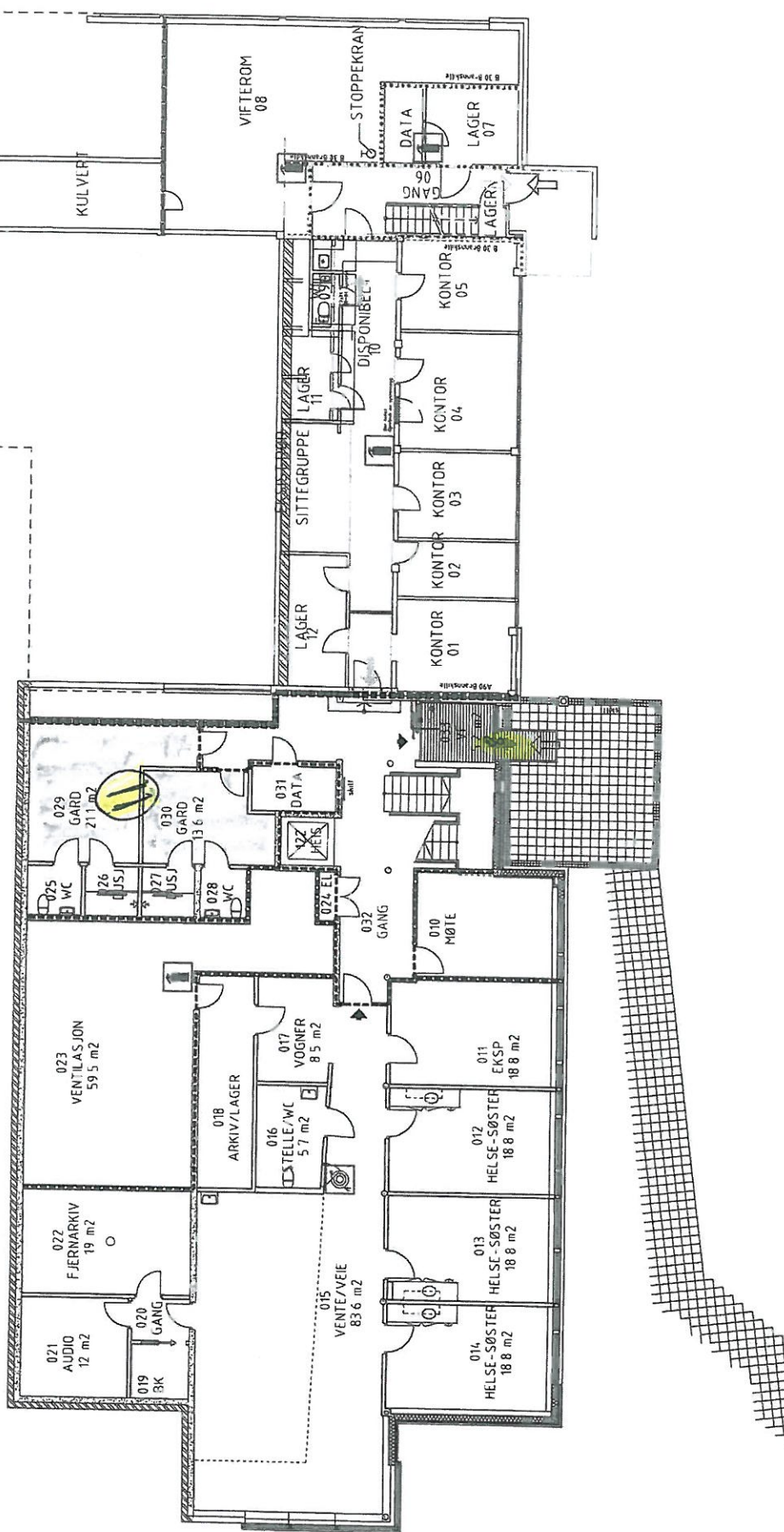


EI 30 D-s2,d0 [B30]

## Skravurer:



Fluktvei



# Etasje:

## 1

Symboler:

Rengjøringsretning

Ulgang til det fri

Hovedangrepsvei

Angrepsvei

Brannslange

Brannalarmsentral

Sprinklersentral

Håndlektiker

Håndlektiker CO2

Nøkkelboks

Veggbetegnelse:

EI 60 A2-s1, d0 (A60)

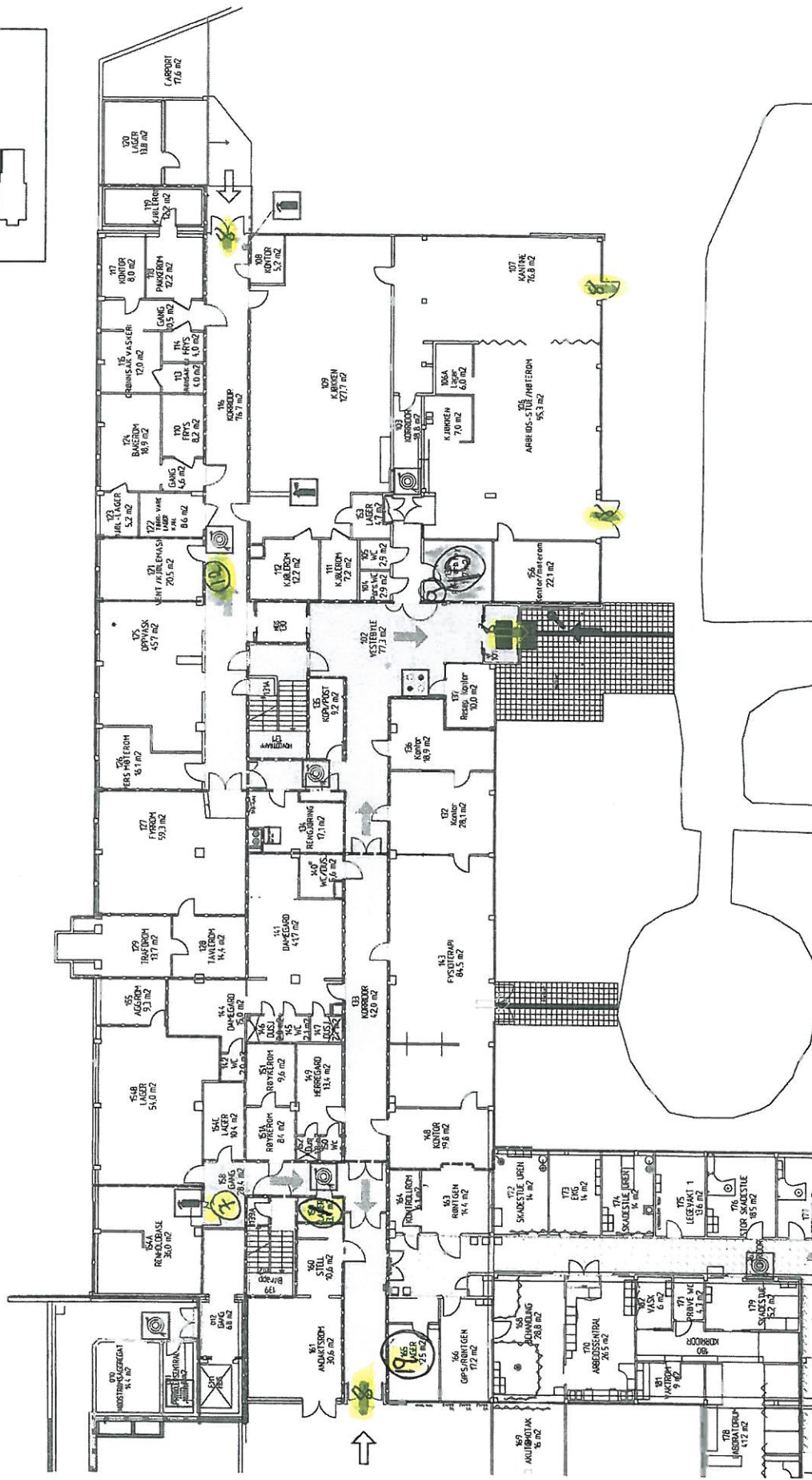
EI 60 A2-s1, d0 (A60)

EI 60 (B60)

Skravuter:

Remningsvei

Fluktrvei



# Etasje:

# 1

**Symboler:**

Remningsretning



Utgang til det fri



Angrepsvei



Brannslange



Håndtøkk



Sprinklersentral

**Veggbetegnelser:**

Ei 60 A2-s1,d0 [A60]



RE120-M A2-s1, d0 [A120]

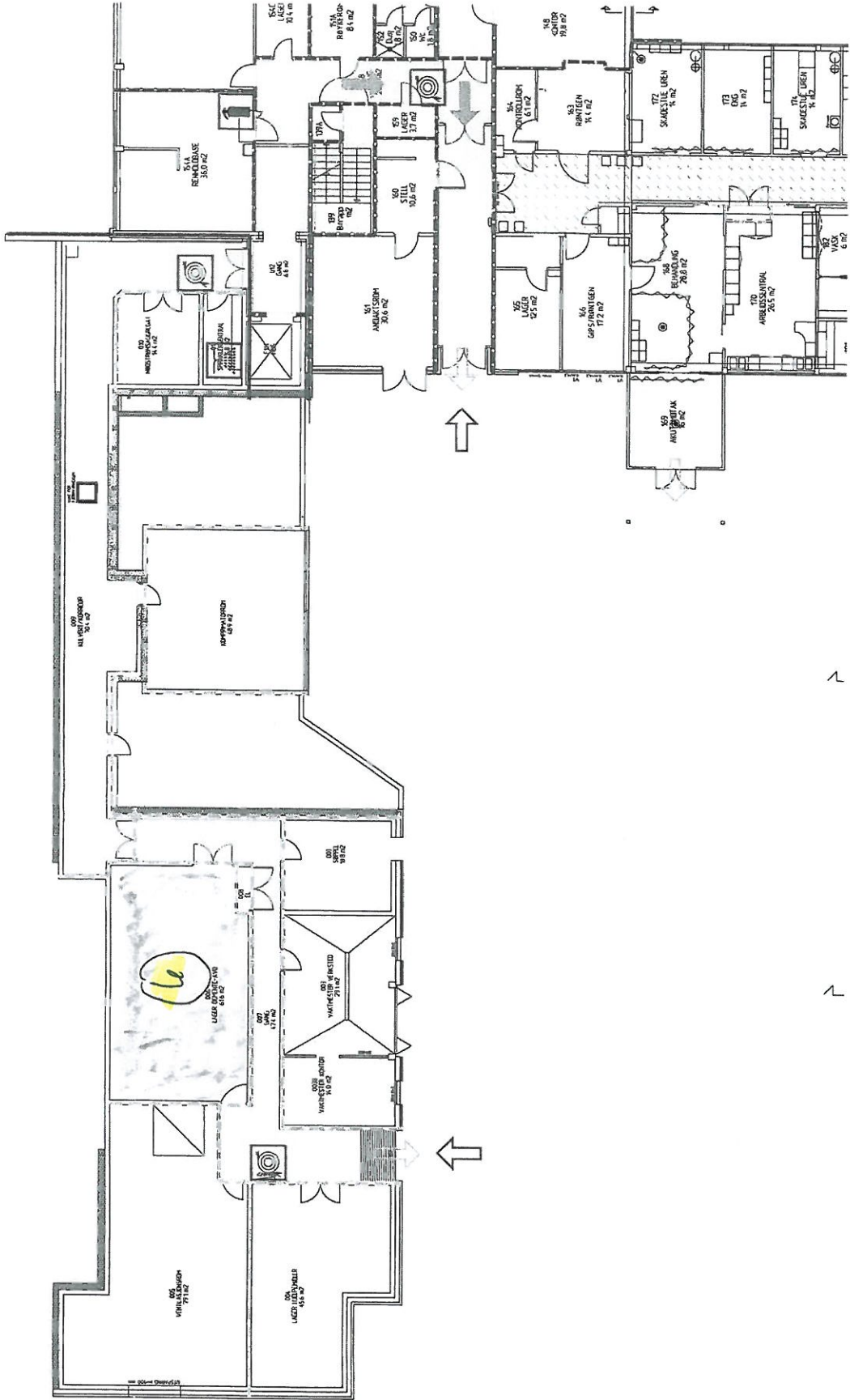
Ei 60 [B60]

**Skravurer:**

Remningsvei



Fluktkvei



# Etasje:

# 2

Symboler:



Rømningsretning



Hovedangrepsvei



Brannslange



Håndstokker



Beleingspanel  
brannalarm



Nøkkelboks

Veggbetegnelser:

REI 120-M A2-s1, d0 [A120]

EI 60 A2-s1, d0 [A60]

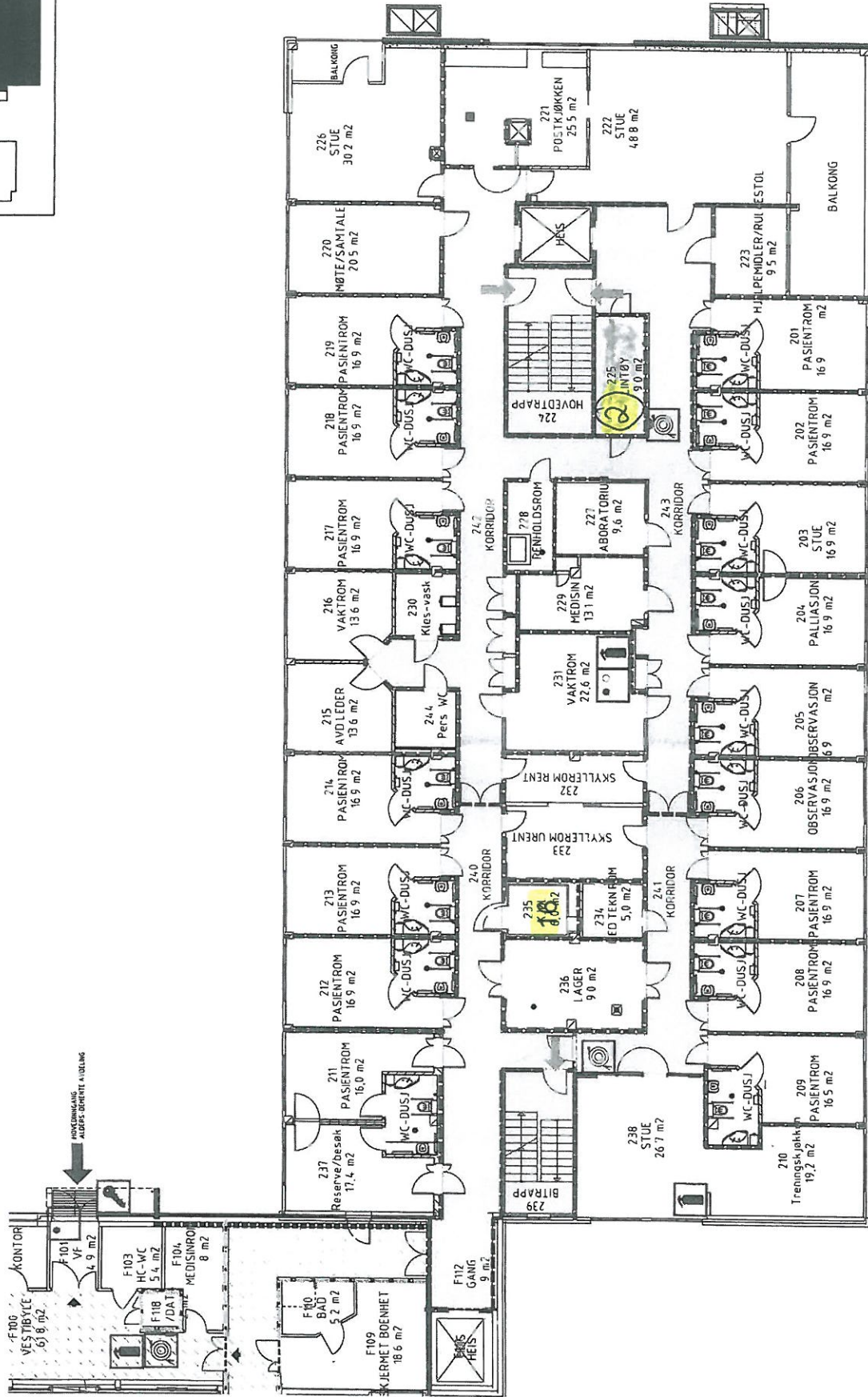
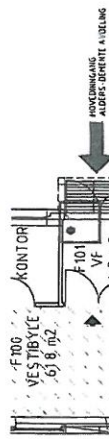
EI 60 [B60]

Skriverer:

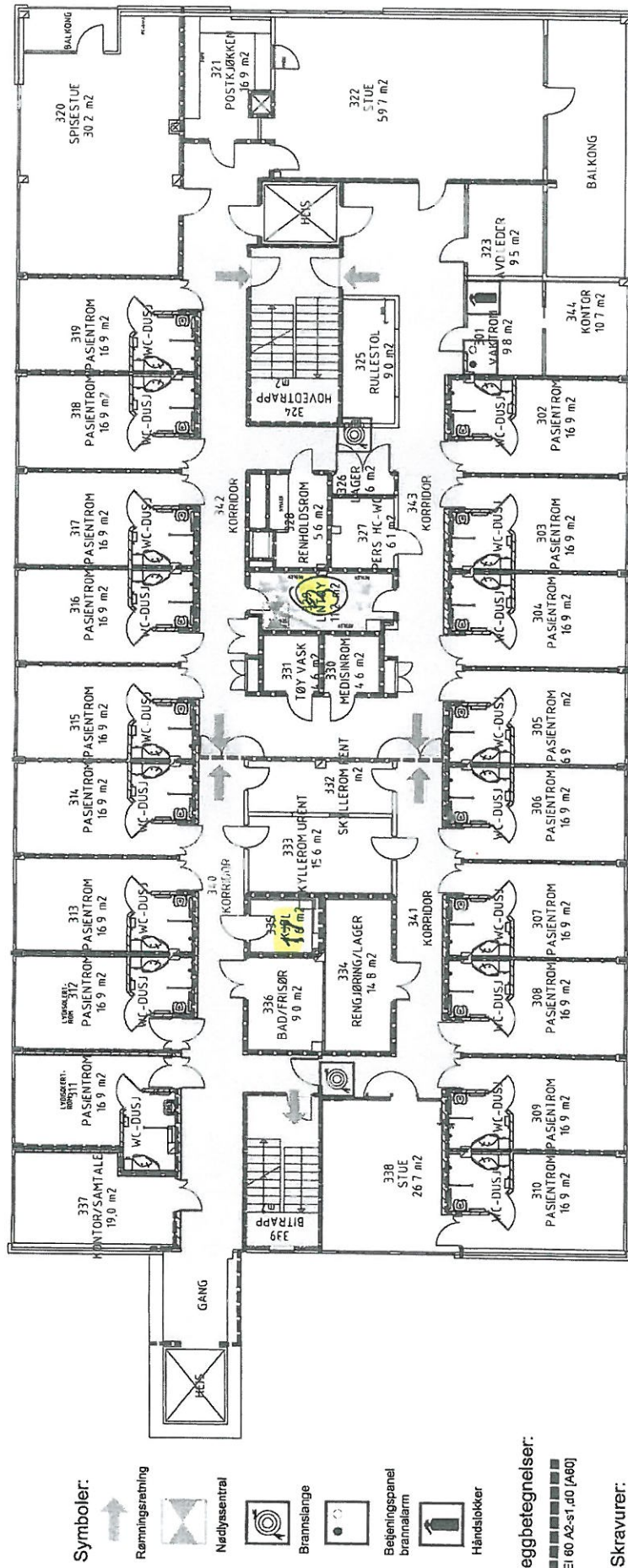
Rømningsvei



Flyktvei

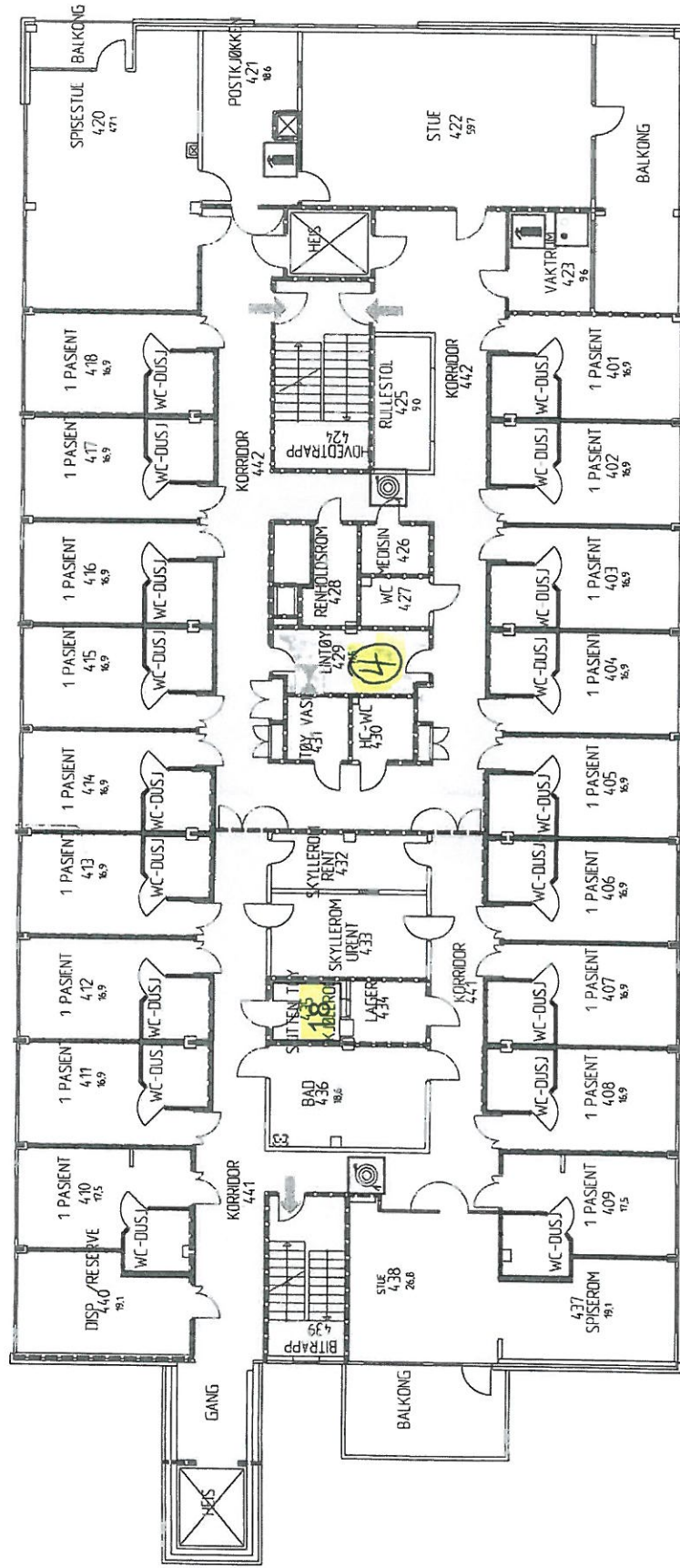


# Etasje: 3



# Etasje:

# 4



**Symboler:**



Rømningsretning



Nøddlyssentral



Brannslange



Håndspjåker



Beleingspanel  
brannalarm

**Veggbetegnelser:**



EI 60 A2-s1,40 (A80)

**Skravurer:**

Rømningsvei