

# Component list

 Style no: **M-SH-05** Style: **Mens SHIRT long sleeve**

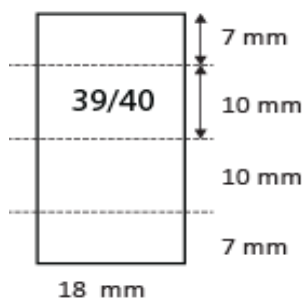
Date: 15-08-19

Material	Description	Placement	Amount
<b>Fabric</b>			
Mainfabric			
Composition	80% combed cotton 20% polyester		
Construction	Plain weave, open not tight construction for good air permeability. 125-130 g/m2. Crease resist finish.		
Colour	Middle blue (customers own colour)		
Interlining	Fused interling, white	collar, cuff, CF	
<b>Trimmings</b>			
Thread; sewing and overlock	Core spun polyester. Colour: Tone in tone blue		
Logo	Embroidery logo tone in tone blue		
Buttons	12 mm 4-hole polyester or polyamid 6.6 with narrow edge. Tone in tone blue. Sparebutton on carelabel.	CF, cuff	12+1
Buttons	9 mm 4-hole polyester or polyamid 6.6 with narrow edge. Tone in tone blue. Sparebutton on carelabel.	cuff slit	2
Mainlabel	Woven polyester satin label, grey with midblue letter	CB neck	1
Sizelabel	Woven polyester satin label, grey with midblue letter	CB neck	1
Carelabel	Woven polyester satin label, white with black print	Left sideseam	1

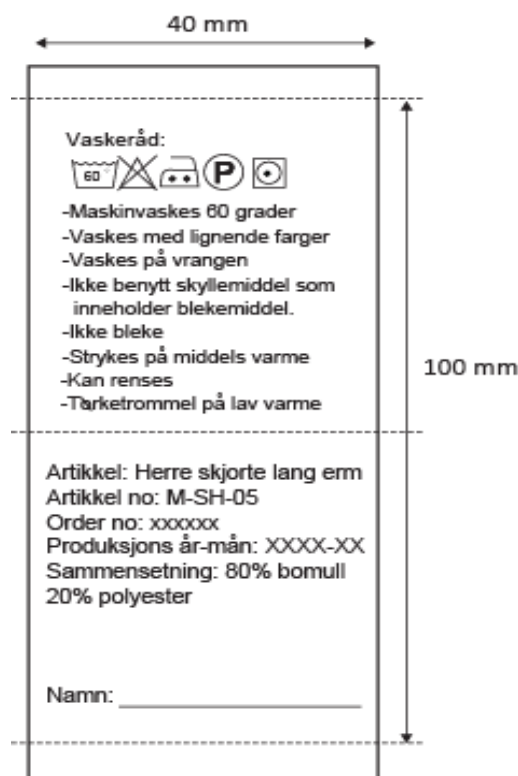
### Inside label



### Size label



### Shirts: M-SH-05

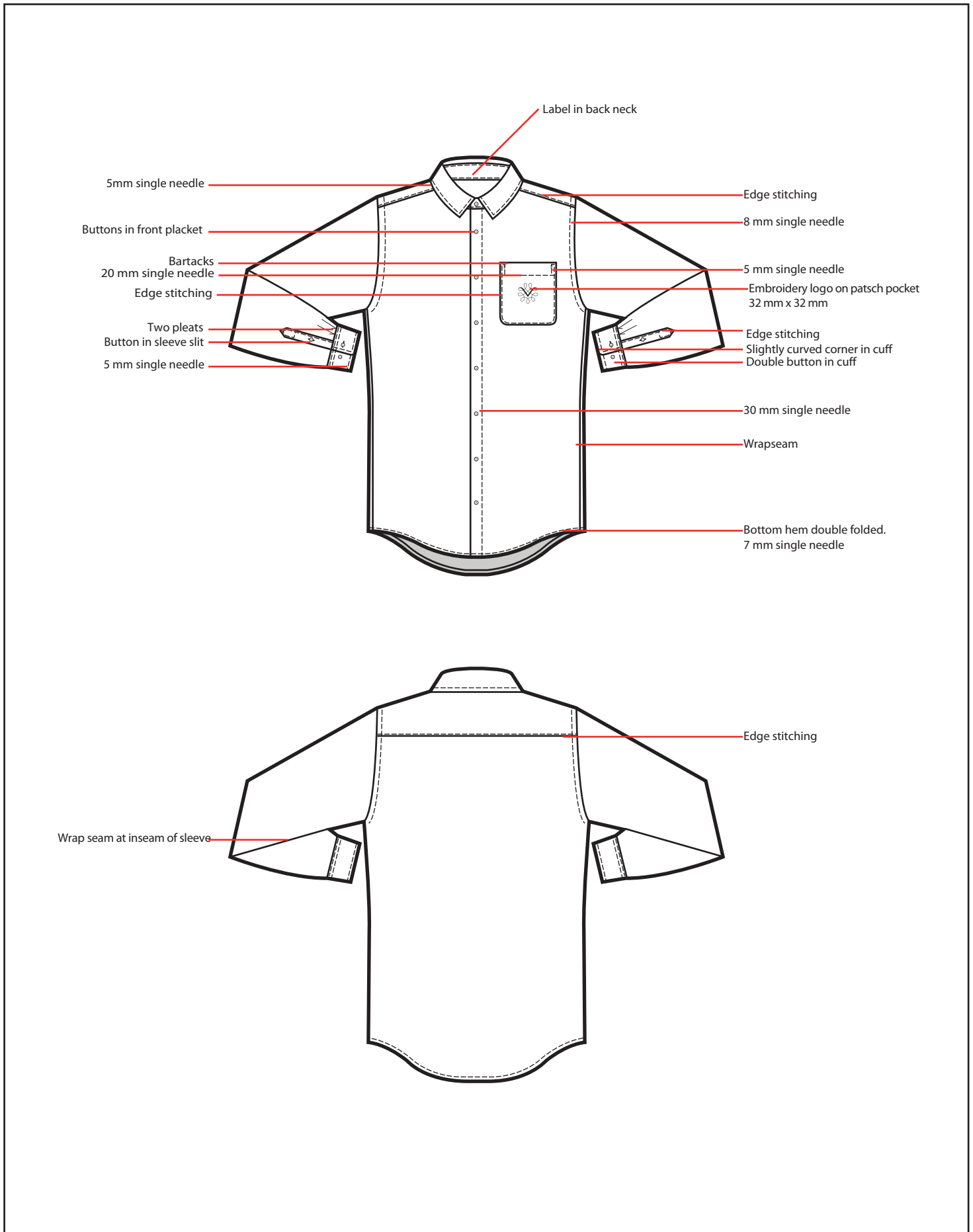


To be packed with stand-up in collar, folded with plastic gem/pins (no needles)

# Technical specifications

Style no: **M-SH-05**    Style: **Mens SHIRT long sleeve**

Date: 15-08-05



# Measurementlist



VINMONOPOLET

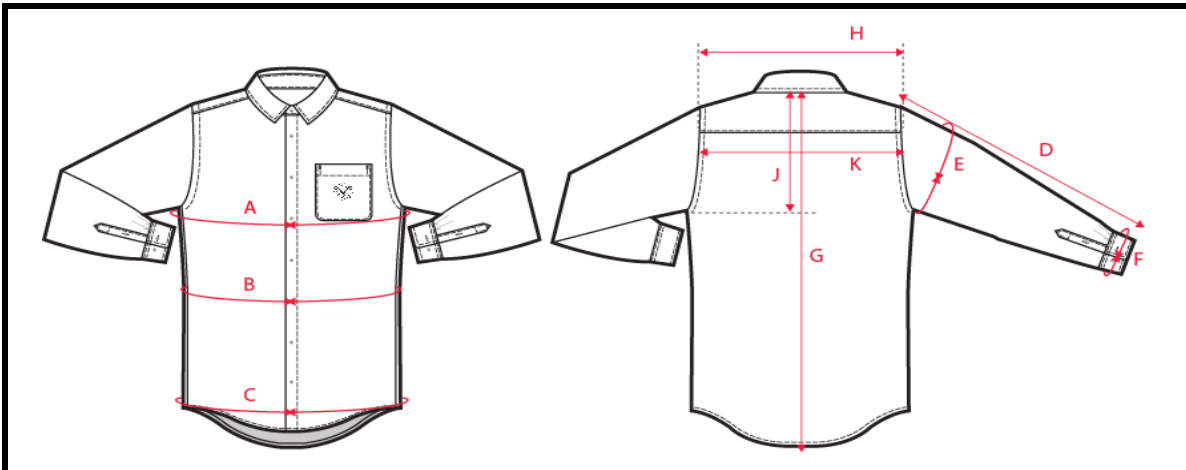
Style no: **M-SH-05**

Style:

**MENS SHIRT - long sleeve**

Date:

15-08-05



		35/36	37/38	<b>39/40</b>	41/42	43/44	45/46	47/48	49/50
A	Chest	102	108	<b>114</b>	120	126	132	138	144
B	Waist	98	104	<b>110</b>	116	122	128	134	140
C	Bottom	96	102	<b>108</b>	114	120	126	132	138
D	Sleeve length	62	63	<b>64</b>	65	66	67	68	69
E	Bicep	43,5	45,5	<b>47,5</b>	49,5	51,5	53,5	55,5	57,5
F	Cuff width, widest buttoning	20,5	21,5	<b>22,5</b>	23,5	24,5	25,5	26,5	27,5
F	Cuff width, tightest buttoning	18,5	19,5	<b>20,5</b>	21,5	22,5	23,5	24,5	25,5
G	CB length	80	81	<b>82</b>	83	84	85	86	87
H	Cross shoulder	44,5	46	<b>47,5</b>	49	50,5	52	53,5	55
J	Armholedepth, fr cb neck	27,5	28,5	<b>29,5</b>	30,5	31,5	32,5	33,5	34,5
K	Cross back, 15 cm fr CB neck	42,5	44,5	<b>46,5</b>	48,5	50,5	52,5	54,5	56,5
L	Collar point	6,5	6,5	<b>6,5</b>	6,5	6,5	6,5	6,5	6,5
M	Collar height CB	5	5	<b>5</b>	5	5	5	5	5
N	Collar length CF - CF	37	39	<b>41</b>	43	45	47	49	51
O	Button distance 1st-2nd	5	5	<b>5</b>	5	5	5	5	5
P	Button distance	8	8	<b>8</b>	8	8	8	8	8

	LONG	35/36	37/38	<b>39/40</b>	41/42	43/44	45/46	47/48	49/50
A	Chest	102	108	<b>114</b>	120	126	132	138	144
B	Waist	98	104	<b>110</b>	116	122	128	134	140
C	Bottom	96	102	<b>108</b>	114	120	126	132	138
D	Sleeve length	65	66	<b>67</b>	68	69	70	71	72
E	Bicep	43,5	45,5	<b>47,5</b>	49,5	51,5	53,5	55,5	57,5
F	Cuff width, widest buttoning	20,5	21,5	<b>22,5</b>	23,5	24,5	25,5	26,5	27,5
F	Cuff width, tightest buttoning	18,5	19,5	<b>20,5</b>	21,5	22,5	23,5	24,5	25,5
G	CB length	84	85	<b>86</b>	87	88	89	90	91
H	Cross shoulder	44,5	46	<b>47,5</b>	49	50,5	52	53,5	55
J	Armholedepth, fr cb neck	27,5	28,5	<b>29,5</b>	30,5	31,5	32,5	33,5	34,5
K	Cross back, 15 cm fr CB neck	2,5	4,5	<b>6,5</b>	8,5	10,5	12,5	14,5	16,5
L	Collar point	6,5	6,5	<b>6,5</b>	6,5	6,5	6,5	6,5	6,5
M	Collar height CB	5	5	<b>5</b>	5	5	5	5	5
N	Collar length CF - CF	37	39	<b>41</b>	43	45	47	49	51
O	Button distance 1st-2nd	5	5	<b>5</b>	5	5	5	5	5
P	Button distance	8	8	<b>8</b>	8	8	8	8	8