

Component list

 Style no: **M-TR-02** Style: **Mens TROUSERS**

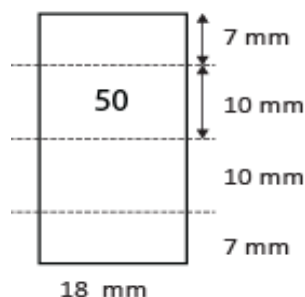
Date: 15-08-19

Material	Description	Placement	Amount
Fabric			
Composition	54% polyester 44% wool (maximum 5% fibres above 30 micron) 2% elastane		
Colour	Dark grey melange (standard colour)		
Construction	Plain weave, Approx 200 g/m2		
WB inside	Main fabric with woven tape with two silicone band	WB inside	
Interlining	Fused interling black	WB and fly	
Binding	Solid black.	fly, WB	
Lining 1	Taffeta 60 g/m2. 100% polyester. Black	Knee lining, fr panel	
Lining 2	65% polyester 35% cotton 2/1 Twill or plain weave. Black	Pockets	
Trimmings			
Thread; sewing and overlock	Core spun polyester. Colour: Tone in tone		
Buttons	15 mm. 4-hole polyester or polyamid 6.6 with narrow edge. Black. Sparebuttons on carelabel.		1+1
Zipper	4 mm spiral nylon zip. Black tape and puller.		1
Hooks and eye	Silver metal hook and eye	CF waistband	1
Mainlabel	Woven polyester satin label, grey with middleblue letters	Left front panel	1
Sizelabel	Woven polyester satin label, grey with middleblue letters	Left front panel	1
Carelabel	Woven polyester satin label, white with black print	Left front panel	1

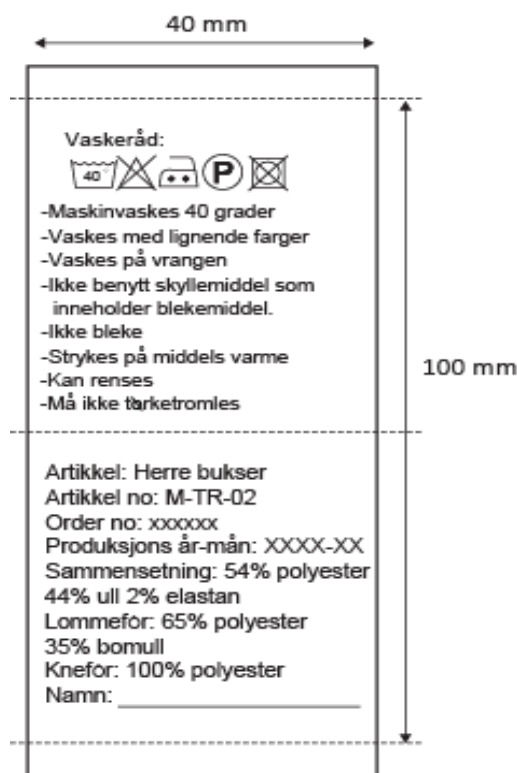
Inside label



Size label



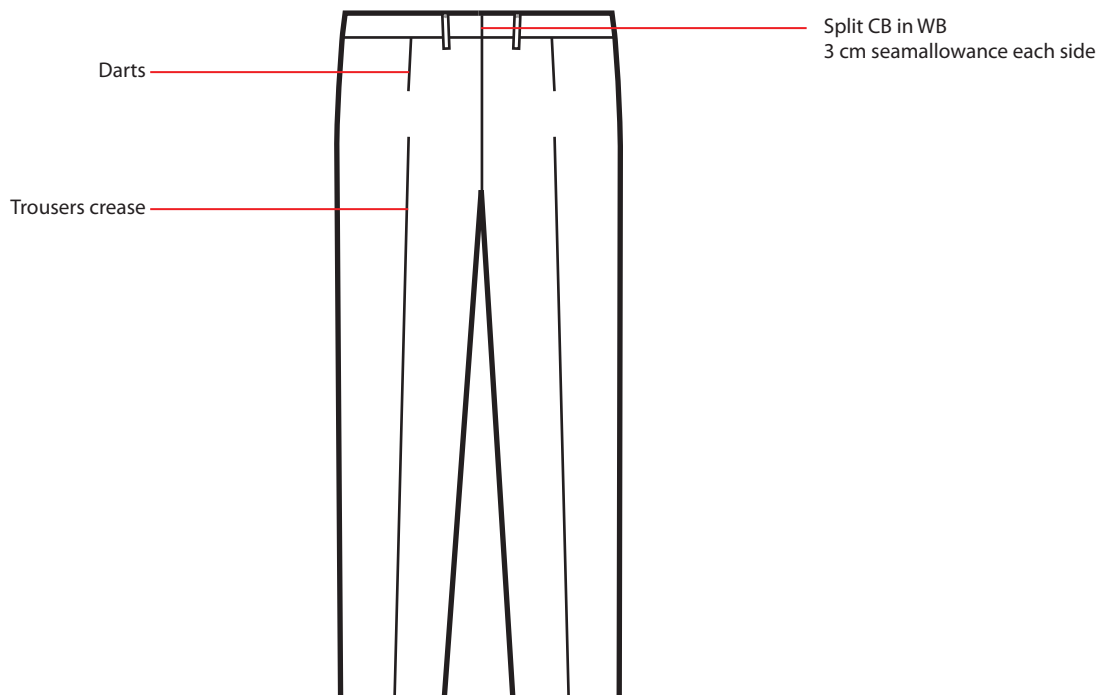
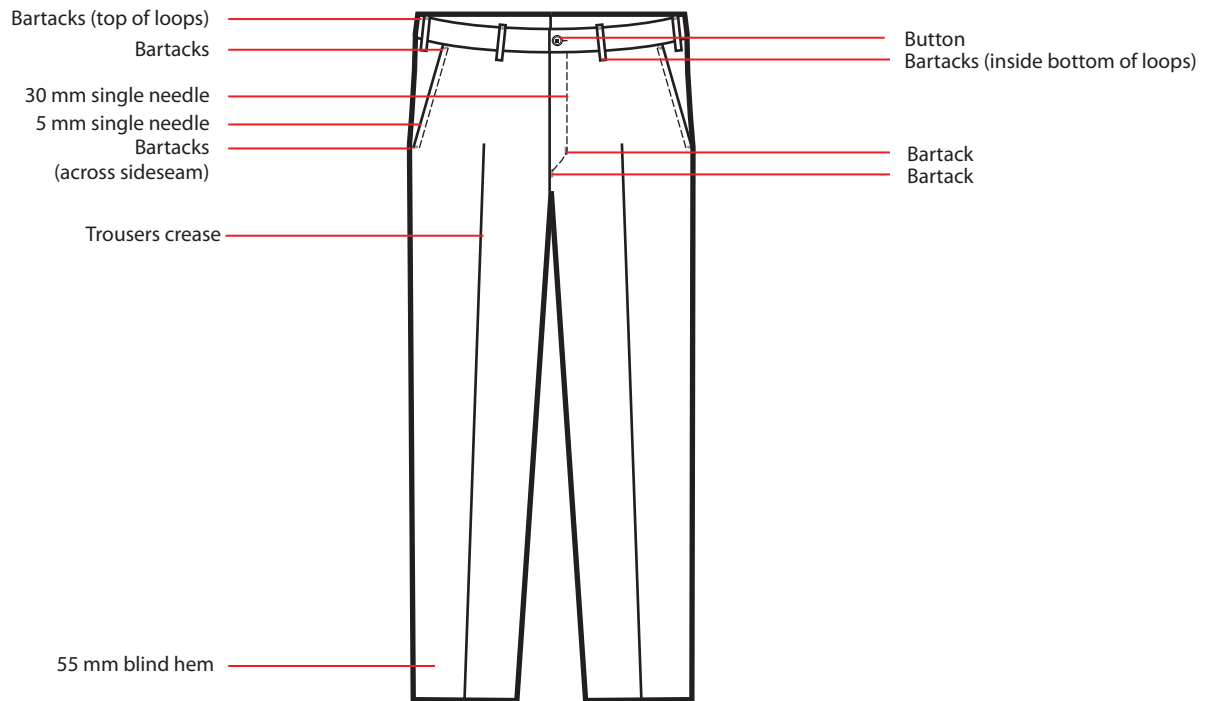
Trousers: W-TR-02



Technical specifications

Style no: **M-TR-02** Style: **Mens TROUSERS**

Date: 15-08-05



Technical specifications

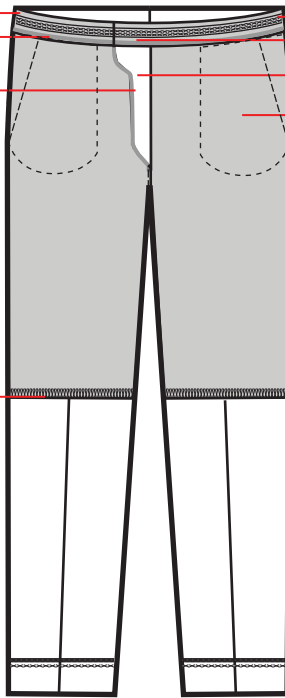
Style no: **M-TR-02** Style: **Mens TROUSERS inside**

Date: 15-08-05

- Main fabric inside WB
- Binding in bottom edge of WB
- Binding edge of both sides of fly
- Ribbon tape with silicon band inside WB
- Hook and eye
- Mens constructed fly
- Pocketbags between front panel and knee lining. Clean inside.

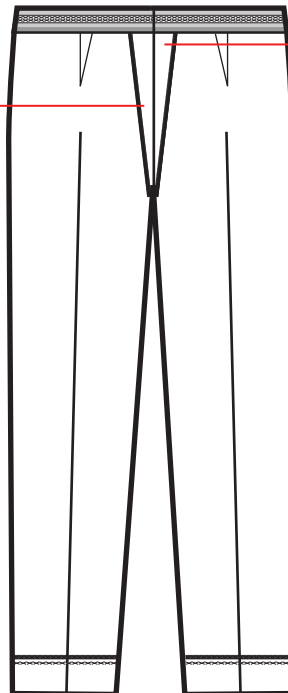


Overlock in edge



Overlock in edge

3cm seam allowance each side in CB where split seams



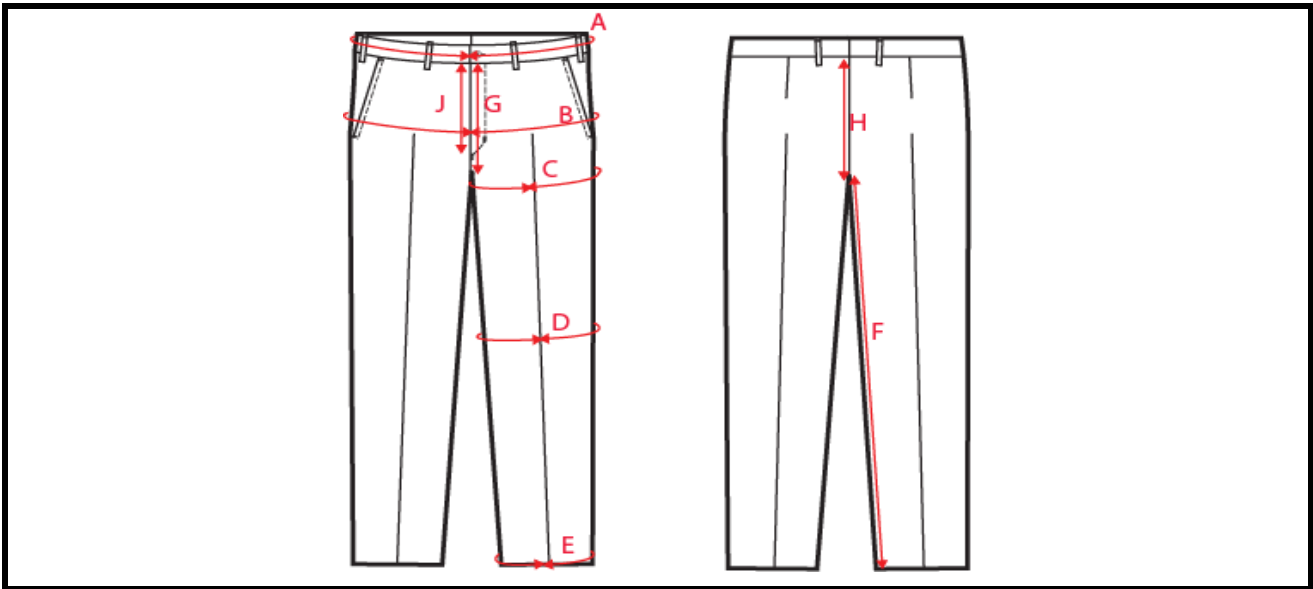
Measurementlist

 Style no: **M-TR-02**

 Style: **Mens TROUSERS**

Date:

15-08-05



		44	46	48	50	52	54	56	58	60	62
A	Waist	79	83	87	91	95	100	105	111	117	123
B	Seat, 2/3 of fr rise	96	100	104	108	112	116	120	124	128	132
C	Thigh	62	64	66	68	70	72	74	76	78	80
D	Knee	40,5	42	43,5	45	46,5	48	49,5	51	52,5	54
E	Bottom of leg	38	39	40	41	42	43	44	45	46	47
F	Innerlength	80	81	82	83	84	85	86	87	88	89
G	Front rise	22,5	23	23,5	24	24,5	25	25,5	26	26,5	27
H	Back rise	33,5	34,5	35,5	36,5	37,5	38,5	39,5	40,5	41,5	42,5
J	Fly, zipx1	16	16	16	16	16	17	17	17	17	17

				D96	D100	D104	D108	D112	D116	D120	
A	Waist			93	97	101	106	111	117	123	
B	Seat, 2/3 of fr rise			106	110	114	118	122	126	130	
C	Thigh			70	72	74	76	78	80	82	
D	Knee			49,5	51	52,5	54	55,5	57	58,5	
E	Bottom of leg			45	46	47	48,5	50	51	52	
F	Innerlength			78	79	80	81	82	83	83	
G	Front rise			23,5	24	24,5	25	25,5	26	26,5	
H	Back rise			35,5	36,5	37,5	38,5	39,5	40,5	41,5	
J	Fly, zipx1			16	16	16	16	17	17	17	

		144	146	148	150	152	154	156	158	160	162
A	Waist	79	83	87	91	95	100	105	111	117	123
B	Seat, 2/3 of fr rise	96	100	104	108	112	116	120	124	128	132
C	Thigh	62	64	66	68	70	72	74	76	78	80
D	Knee	40,5	42	43,5	45	46,5	48	49,5	51	52,5	54
E	Bottom of leg	38	39	40	41	42	43	44	45	46	47
F	Innerlength	85	86	87	88	89	90	91	92	93	94
G	Front rise	22,5	23	23,5	24	24,5	25	25,5	26	26,5	27
H	Back rise	33,5	34,5	35,5	36,5	37,5	38,5	39,5	40,5	41,5	42,5
J	Fly, zipx1	16	16	16	16	16	17	17	17	17	17