


Component list

 Style no: **W-TR-01** Style: **Womens TROUSERS**

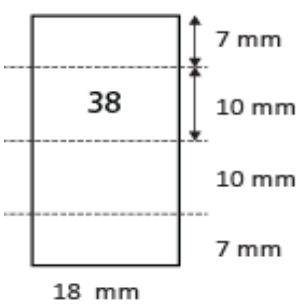
Date: 15-08-19

Material	Description	Placement	Amount
Fabric			
Composition	54% polyester 44% wool (maximum 5% fibres above 30 micron) 2% elastane		
Colour	Dark grey melange (standard colour)		
Construction	Plain weave, Approx 200 g/m2		
WB inside	Main fabric with woven tape with two silicone band	WB inside	
Interlining	Fused interling black	WB and fly	
Binding	Solid black.	fly, WB	
Lining 1	Taffeta 60 g/m2. 100% polyester. Black	Knee lining, fr panel	
Lining 2	65% polyester 35% cotton 2/1 Twill or plain weave. Black	Pockets	
Trimmings			
Thread; sewing and overlock	Core spun polyester. Colour: Tone in tone		
Buttons	15 mm. 4-hole polyester or polyamid 6.6 with narrow edge. Black. Sparebuttons on carelabel.		1+1
Zipper	4 mm spiral nylon zip. Black tape and puller.		1
Hooks and eye	Silver metal hook and eye	CF waistband	1
Mainlabel	Woven polyester satin label, grey with middleblue letters	Left front panel	1
Sizelabel	Woven polyester satin label, grey with middleblue letters	Left front panel	1
Carelabel	Woven polyester satin label, white with black print	Left front panel	1

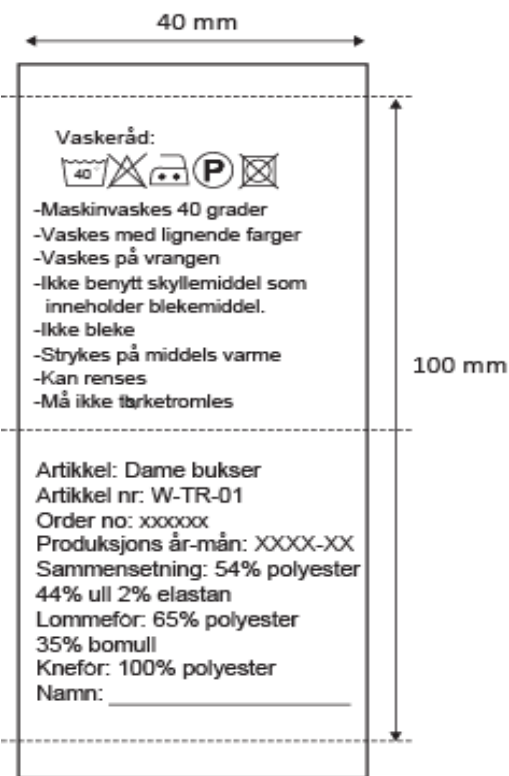
Inside label




Size label



Trousers: W-TR-01



Vaskeråd:

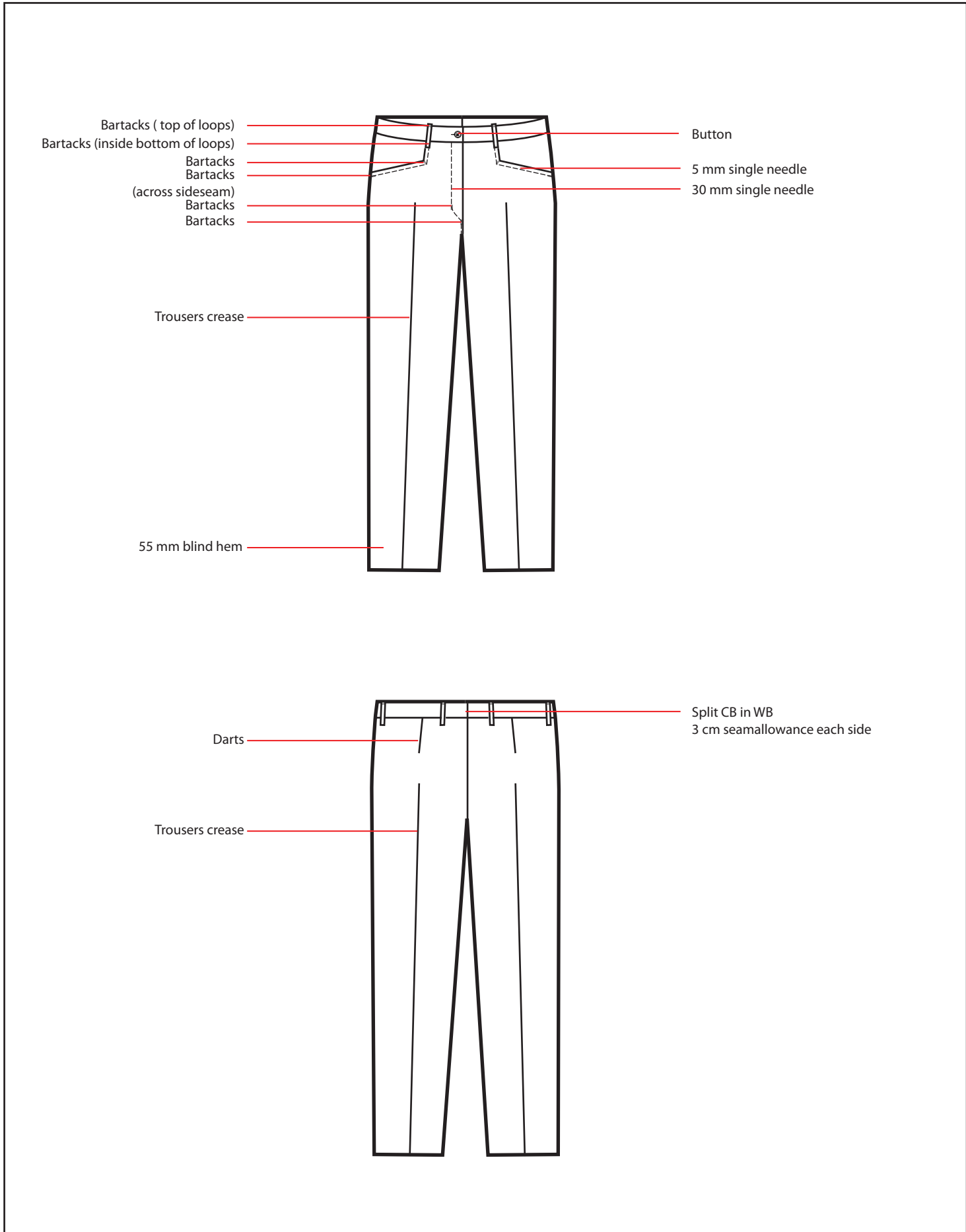
- 
- Maskinvaskes 40 grader
- Vaskes med lignende farger
- Vaskes på vrangen
- Ikke benytt skyllemiddel som inneholder blekemiddel.
- Ikke bleke
- Stryk på middels varme
- Kan renses
- Må ikke tørketromles

Artikkel: Dame bukser
 Artikkel nr: W-TR-01
 Order no: xxxxxx
 Produksjons år-mån: XXXX-XX
 Sammensetning: 54% polyester
 44% ull 2% elastan
 Lommefør: 65% polyester
 35% bomull
 Knefør: 100% polyester
 Namn: _____

Technical specifications

Style no: **W-TR-01** Style: **Womens TROUSERS**

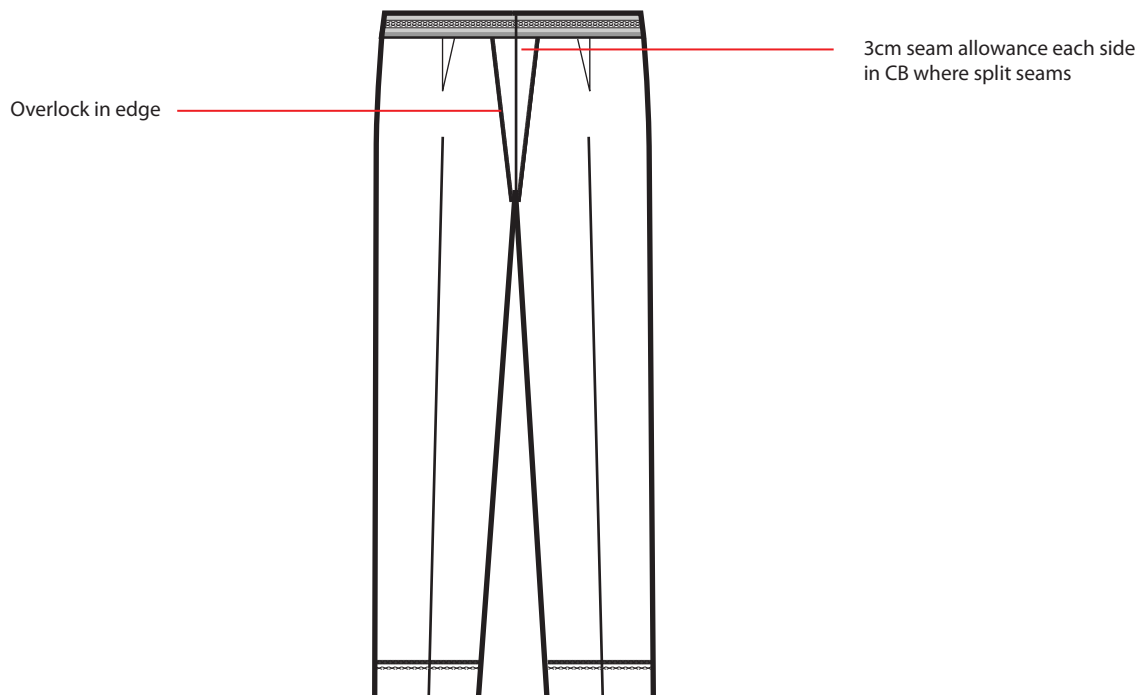
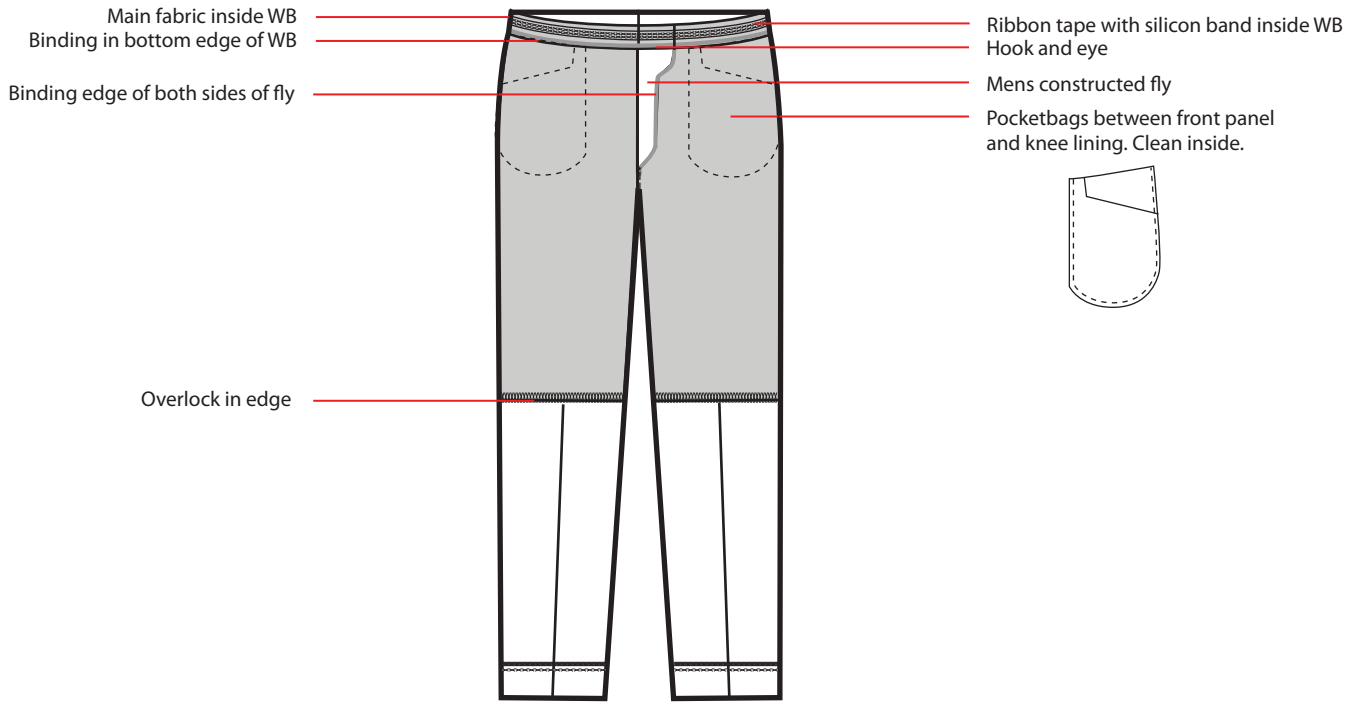
Date: 15-08-05



Technical specifications

Style no: **W-TR-01** Style: **Womens TROUSERS inside**

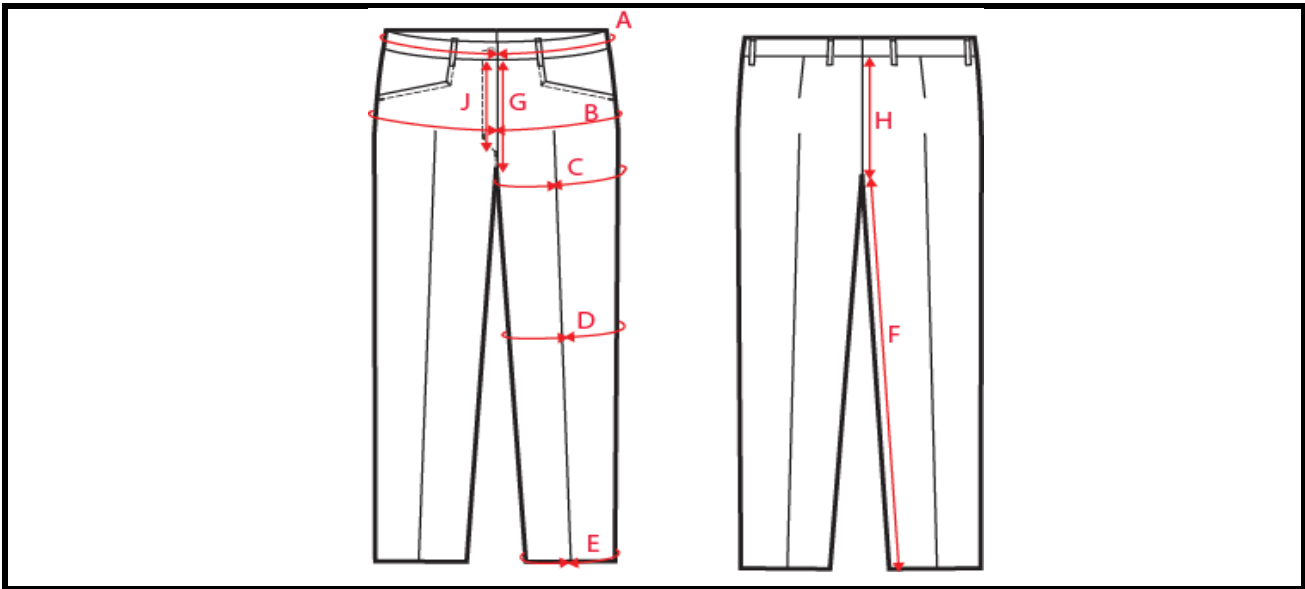
Date: 15-08-05



Measurementlist

 Style no: **W-TR-01** Style: **Womens TROUSERS**

Date: 15-08-05



		C34	C36	C38	C40	C42	C44	C46	C48	C50	C52	C54
A	Waist	74	78	82	86	90	94	98	103	109	115	121
B	Seat, 2/3 of fr rise	95	99	103	107	111	115	119	124	129	134	139
C	Thigh	59,5	61,5	63,5	65,5	67,5	69,5	71,5	74,5	77,5	80,5	83,5
D	Knee	41	42,5	44	45,5	47	48,5	50	51,5	53	54,5	56
E	Bottom of leg	38	39	40	41	42	43	44	45	46	47	48
F	Innerlength	79	80	81	81	81	81	81	81	81	81	81
G	Front rise	19	19,5	20	20,5	21	21,5	22	22,5	23	23,5	24
H	Back rise	35	36	37	38	39	40	41	42	43	44	45
J	Fly, zipx1	13	13	13	13	13	14	14	14	14	14	14

					D20	D21	D22	D23	D24	D25	D26	D27
A	Waist				89	93	97	101	106	112	118	124
B	Seat, 2/3 of fr rise				113	117	121	125	130	136	142	148
C	Thigh				68,5	70,5	72,5	74,5	77	80	83	86
D	Knee				47	48,5	50	51,5	53,5	55,5	57,5	59,5
E	Bottom of leg				42	43	44	45	46	47	48	49
F	Innerlength				77	77	77	77	77	77	77	77
G	Front rise				20,5	21	21,5	22	22,5	23	23,5	24
H	Back rise				38	39	40	41	42	43	44	45
J	Fly, zipx1				13	13	13	14	14	14	14	14

Long		C34	C36	C38	C40	C42	C44	C46	C48	C50	C52	C54
A	Waist	74	78	82	86	90	94	98	103	109	115	121
B	Seat, 2/3 of fr rise	95	99	103	107	111	115	119	123	127	131	135
C	Thigh	59,5	61,5	63,5	65,5	67,5	69,5	71,5	74,5	77,5	80,5	83,5
D	Knee	41	42,5	44	45,5	47	48,5	50	51,5	53	54,5	56
E	Bottom of leg	38	39	40	41	42	43	44	45	46	47	48
F	Innerlength	85	85	85	85	85	85	85	85	85	85	85
G	Front rise	19	19,5	20	20,5	21	21,5	22	22,5	23	23,5	24
H	Back rise	35	36	37	38	39	40	41	42	43	44	45
J	Fly, zipx1	13	13	13	13	13	14	14	14	14	14	14