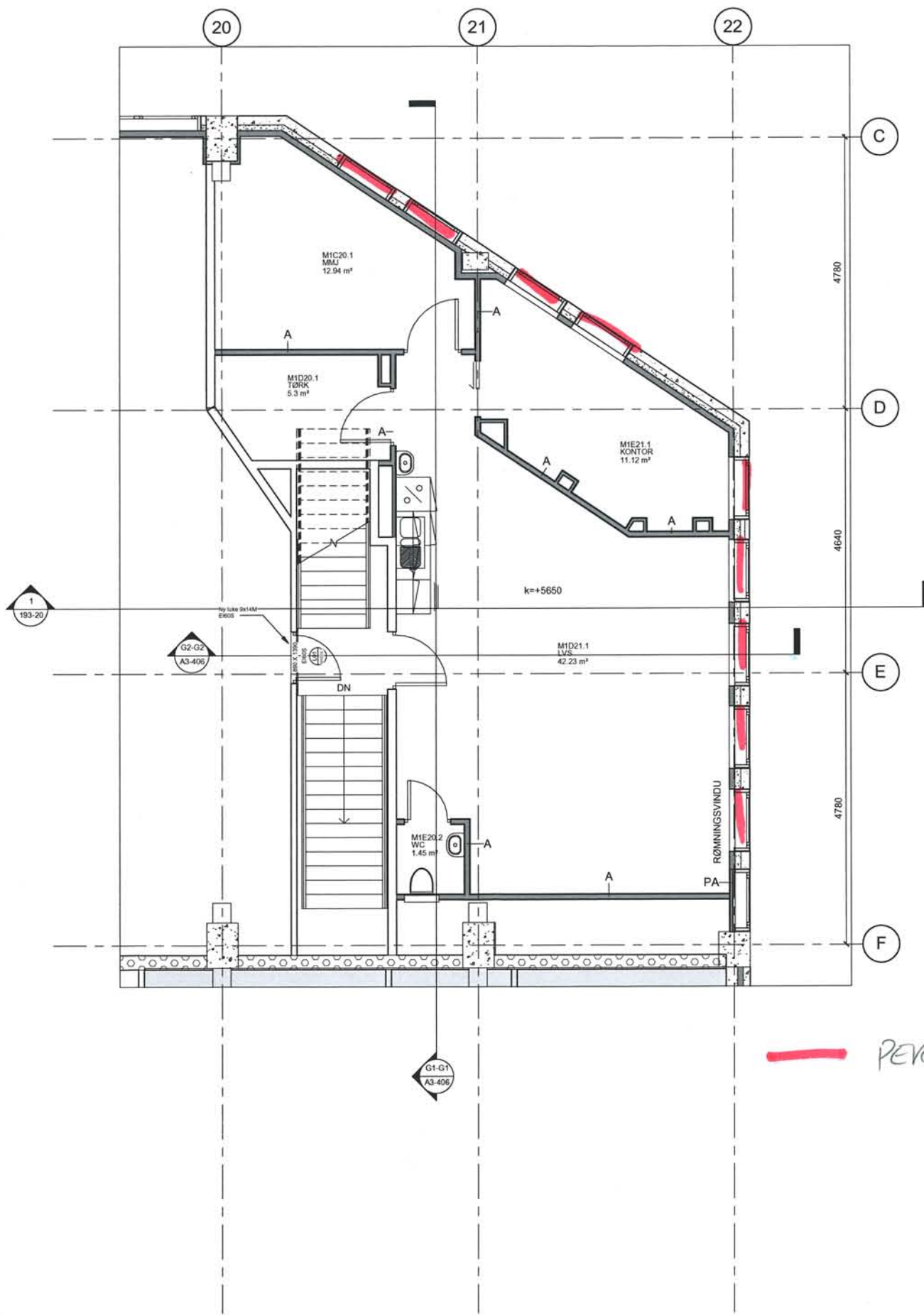


▬ TETT FORHENG  
▬ PERSIENNE  
▬ GARDIN





▬ FOLIERT

OVERSIKT OVER GARDINER OG SOLSKJERMING  
 Ø.D. OG ARKITEKTER 03.05.15



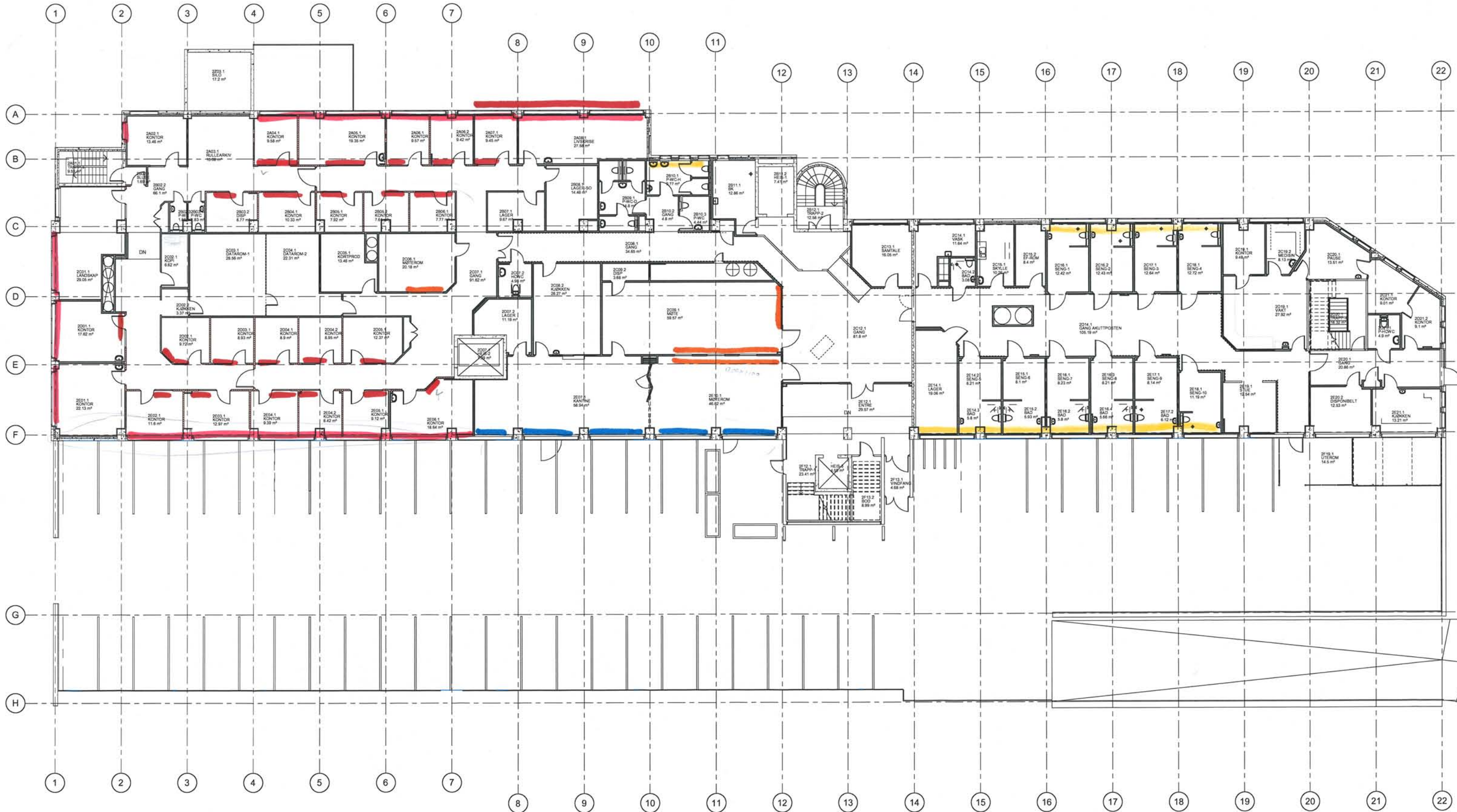
— PERSTIENNE








-  PERSIENNE
-  GARDIN
-  LAMELL GARDIN
-  RULLEGARDIN

 FOLIERT

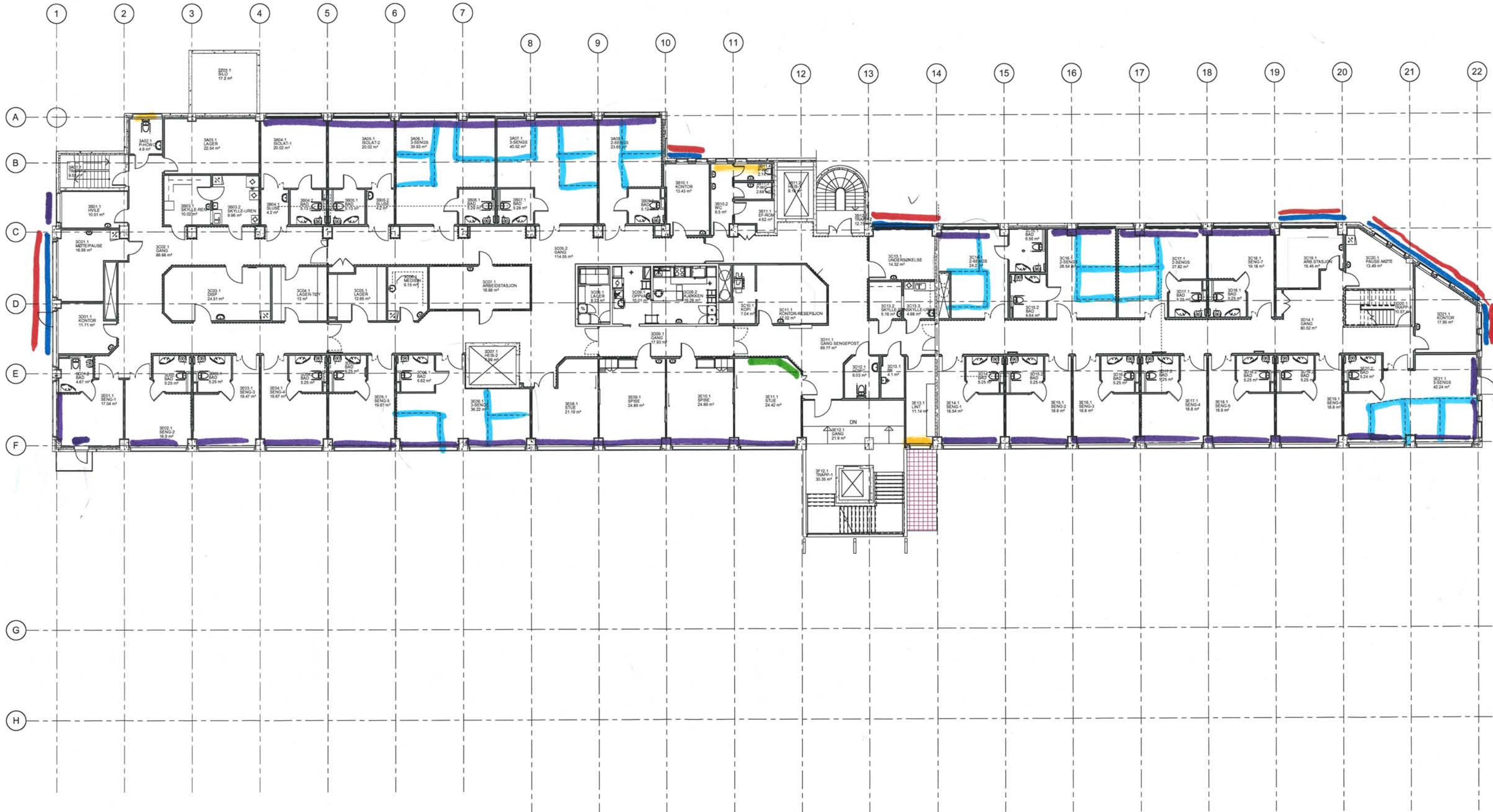
\* ALLE KONTOR SKAL HA GARDINSKINNVE  
+ GARDIN MOT KORRIDOR





-  TETT FORHENG
-  GARDIN
-  HALVTRANS. GARDIN + LYSTETT GARDIN
-  HALVTRANS. GARDIN
-  RULLEGARDIN

 FOLIERT





-  PERSIENNE
-  HALUTR. GARDIN
-  RULLEGARDIN
-  LAMELL GARDIN



D

E

F

5. etg ventilasjonsrom  
20340

5. etg.  
19650

4. etg.  
16600

EKSTRA LANG SNOR MED-  
TREKK/ MOTORSTYRT  
AVLLE GARDIN

790

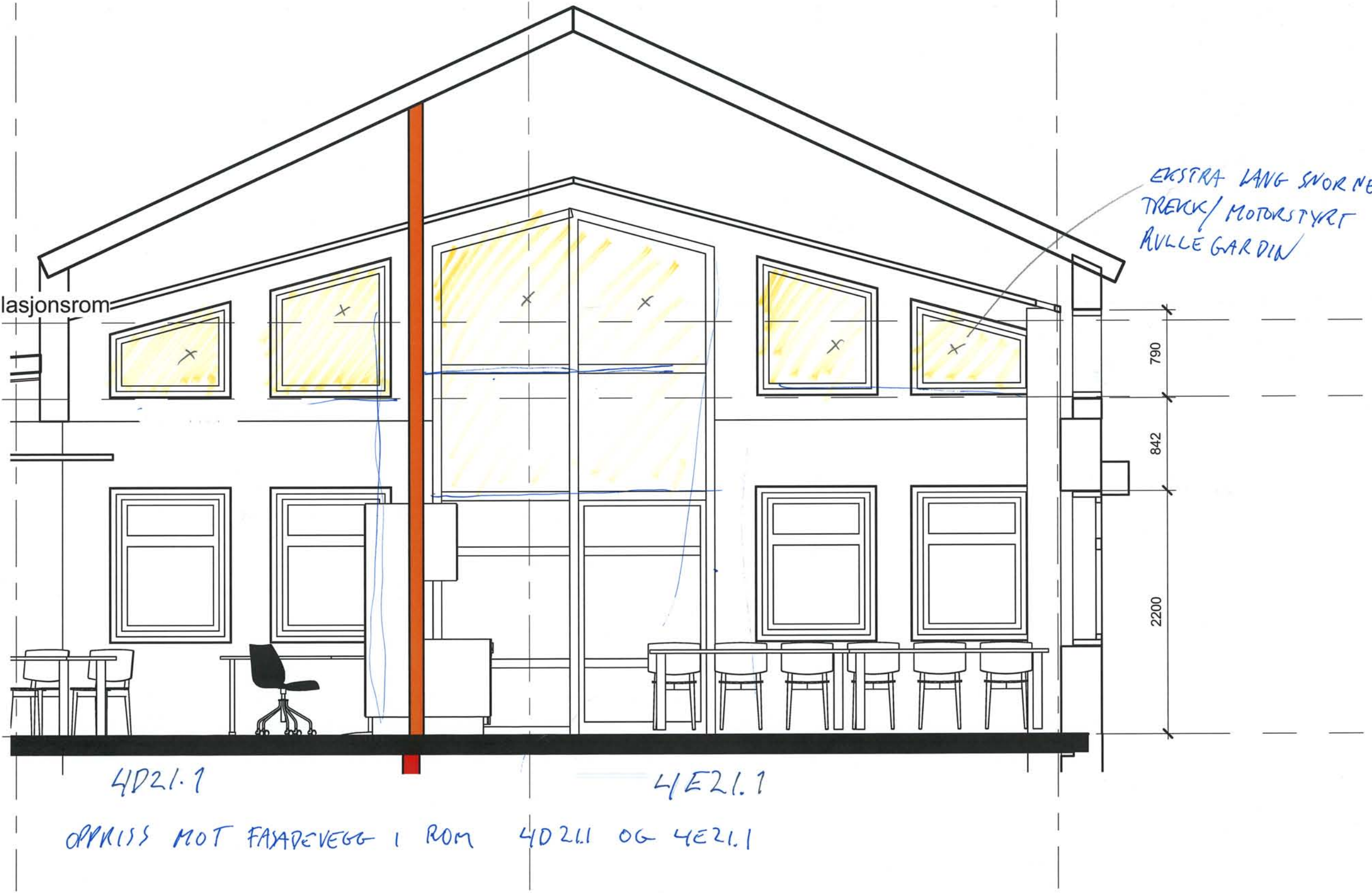
842

2200

4D21.1

4E21.1

OPPRISS MOT FASADVEGG I ROM 4D21.1 OG 4E21.1





4. etg

Fargepalett vegger og gulv 4. etg.



3. etg.

Fargepalett vegger og gulv 3. etg.





2. etg.

Fargepalett vegger og gulv 2. etg.



Eksempel på fargepallett for blendingsgardin/ gardin



Eksempel på fargepallett for halvtransparente "stores"





UK. betongdrager

Systemhimling

Ny gipsplate

Dampserre

Isolert hulrom

Tett is  
6 mm

Eks. påføring suppleres  
med 1-lag gips

gardinskinne med takfeste  
ytterste skinne skal ha wave  
oppheng

80-100 80

160-200

gardinskinne veggfeste-alternativ  
justerbare vinkler festes til vegg

50

# 3. etasje (3E15.1 SENG-2)

Ny gipstilsetning

Evt. varavindu

Eks. v

Utsnitt av detalj V16/ A3-503  
Eksempel på typisk feste av gardinskinner.  
Og Arkitekter 19.05.2015