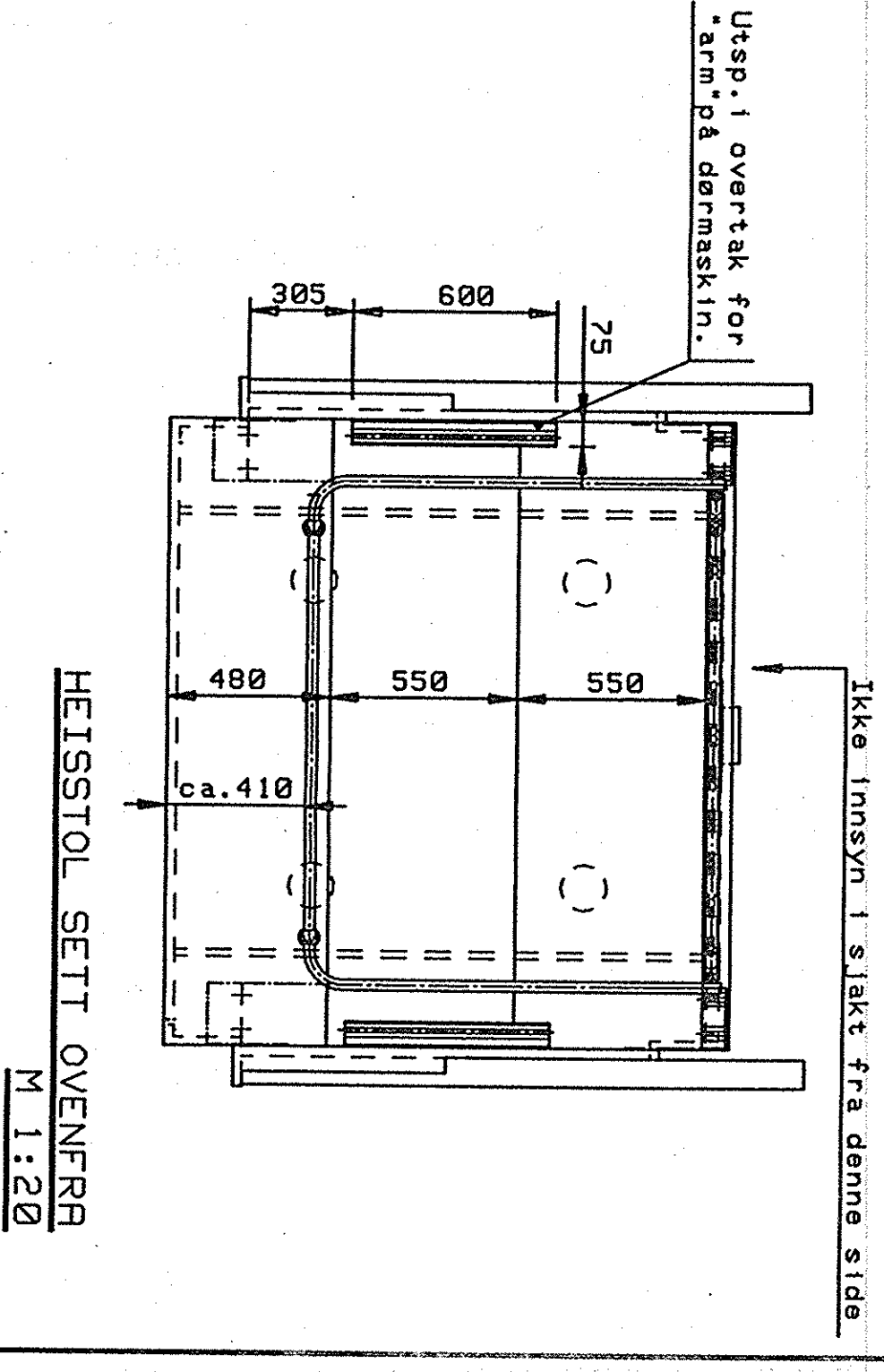
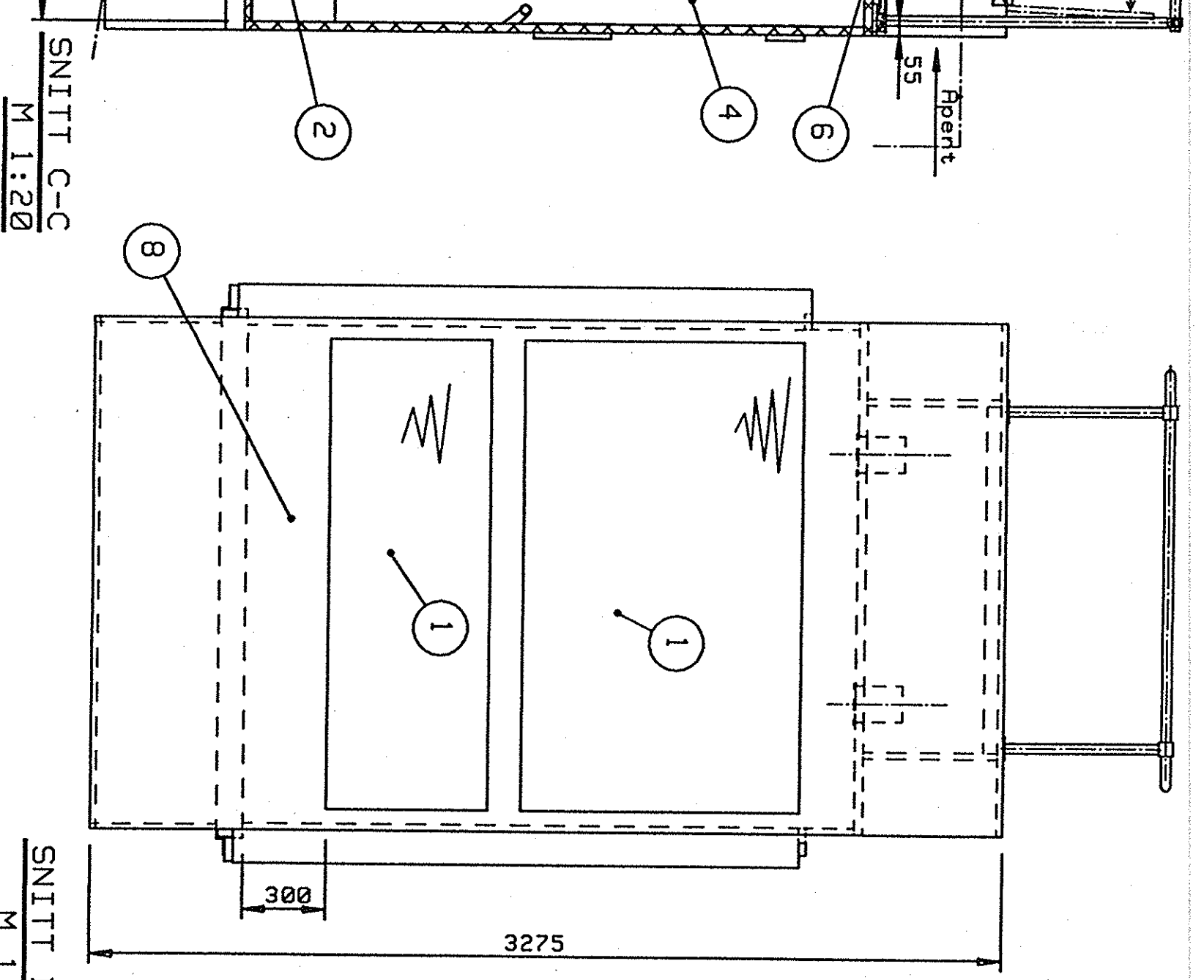
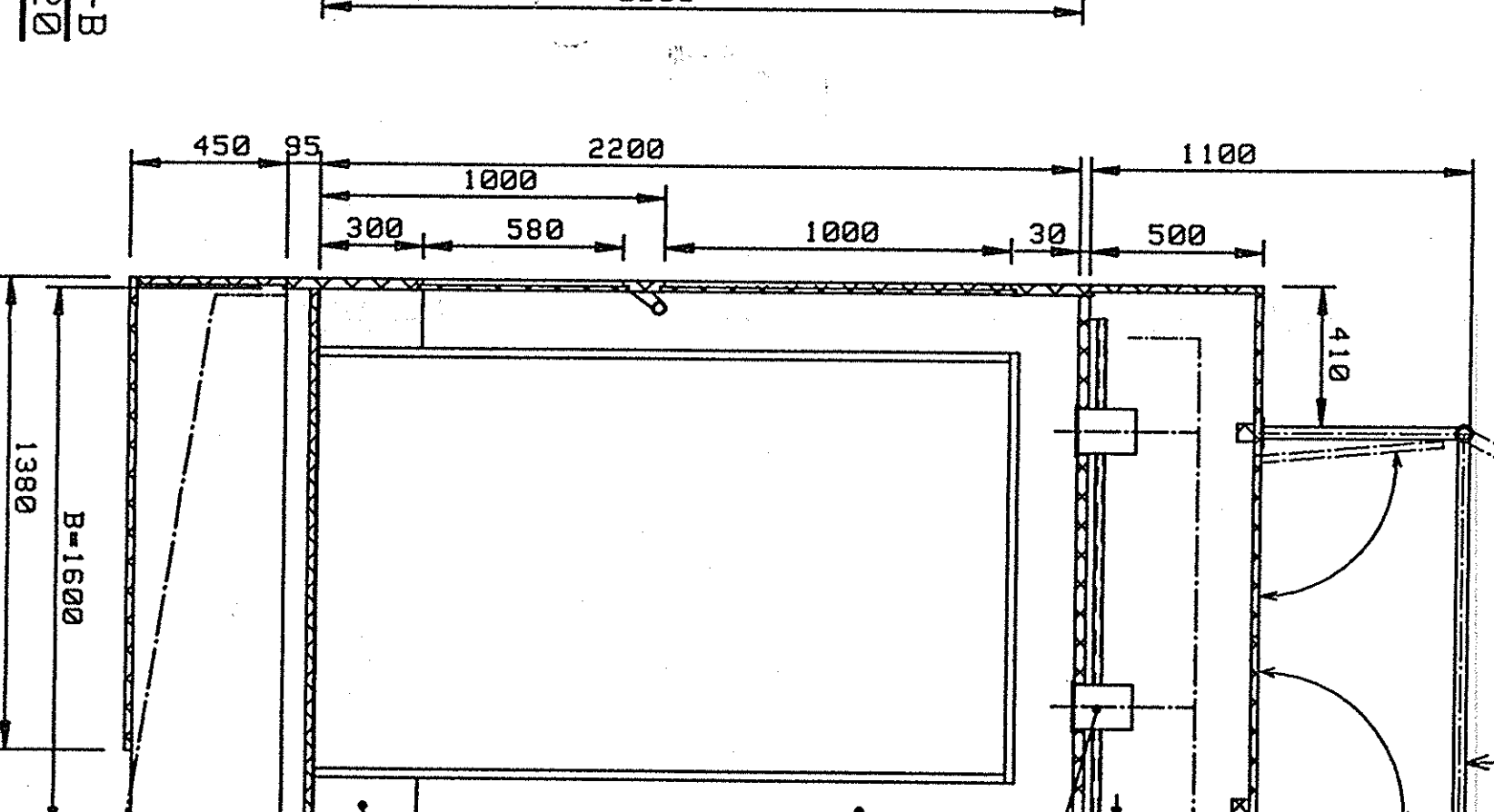
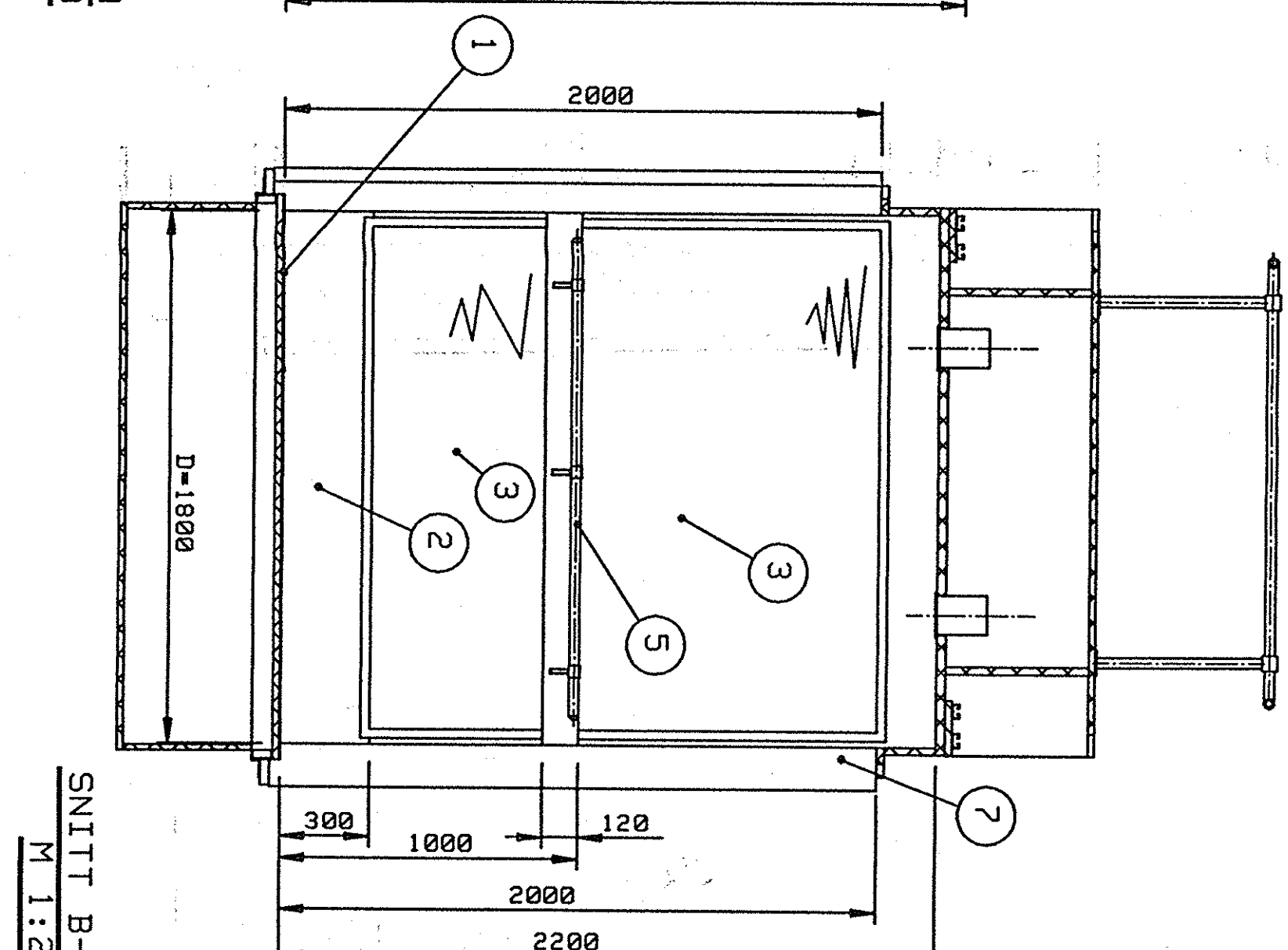
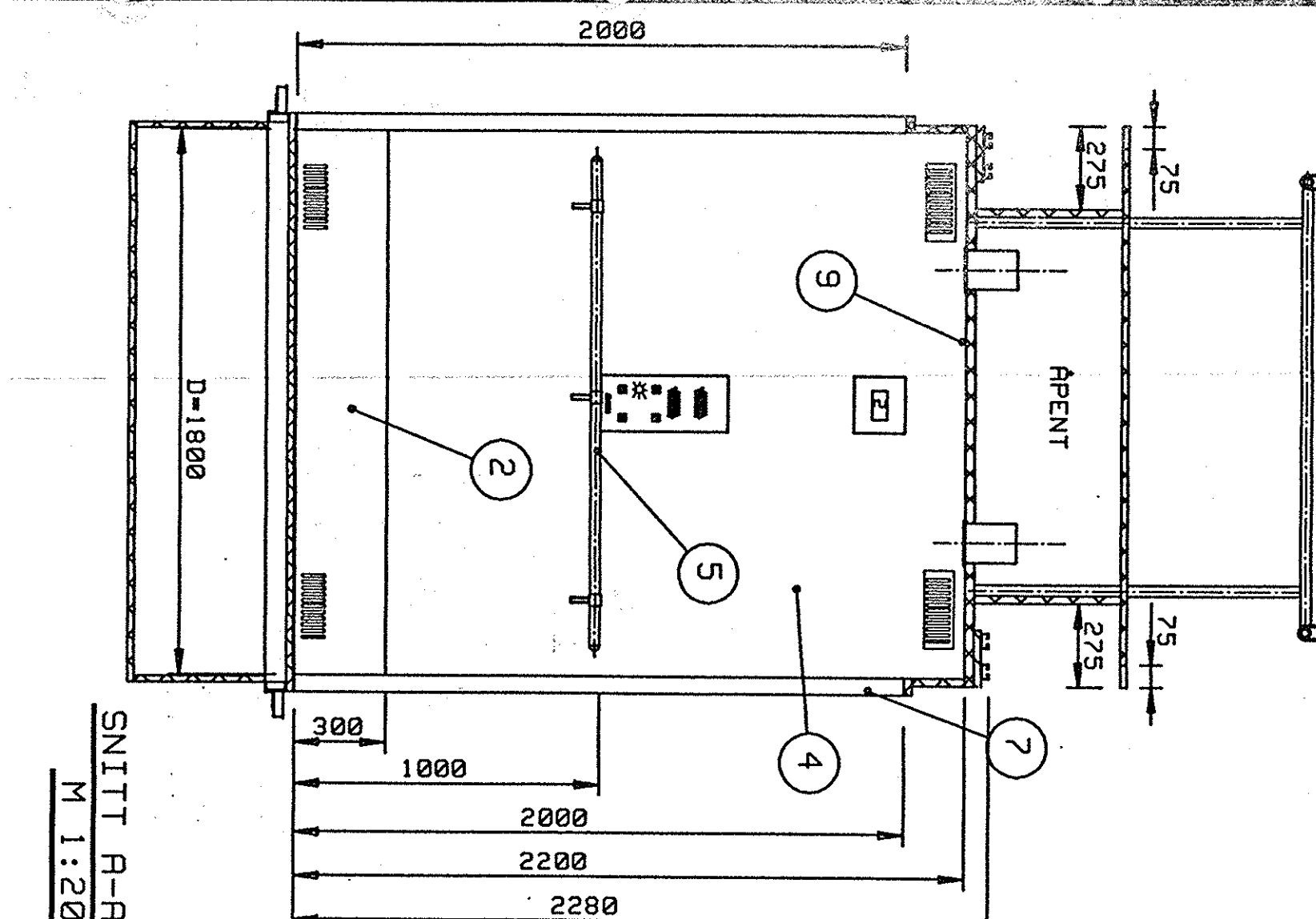
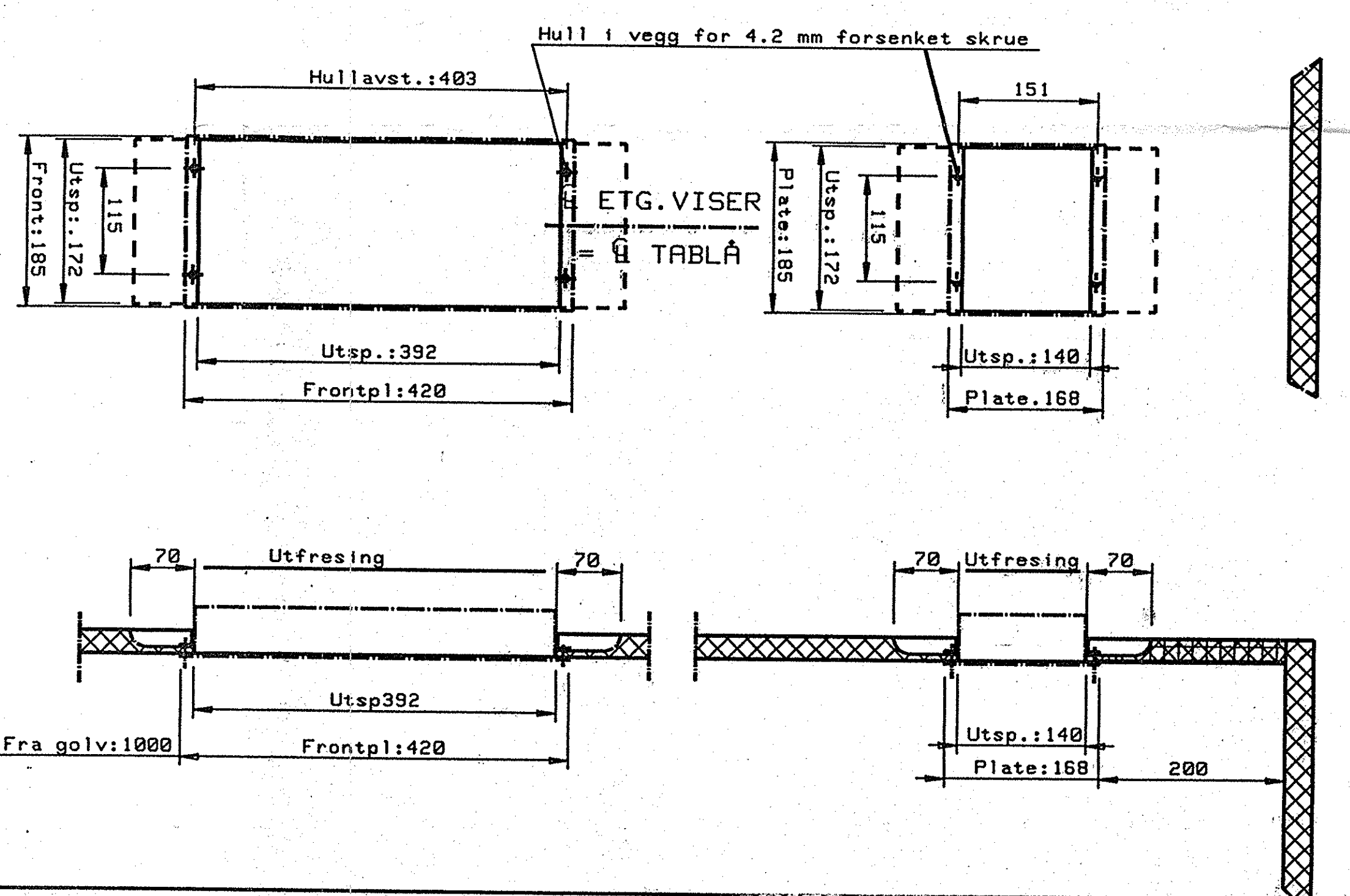


- 1 Golvellegg: Norament 925B Farge 702 (Sort)
- 2 Spakplate i rustfritt stål høyde: 300mm
- 3 Vindu i 12mm laminert glass
- 4 Vegger: Perstorplaninat PP 2081U
- 5 Handleder: 2 stk. type Erling
- 6 Belysning: 4 stk Høvik downlight system 120 (1 stk. med nødlys)
- 7 Dørsmyg i rustfritt stål
- 8 Heisstol mates utvendig: RRL 7001 (Stilbergrau) ans 30
- 9 Tak: Perstorplaninat PP 2010U

PLAN AV HEISSTOL
M 1:10



Rev. R 27/6-98 Ingen avtrekking i dermyg/tillf. farger/lusert tabelluspe PJ	Drøytpe: Selcom 12/L
Ant. Bakkrikkelse	Pos standard
Tegning nr.	Hesr.
Pos standard	Ca vekt
Enhet	Tot.
HEIS 3 OG 4 - STOLTEGNING	
LILLESTRØM STASJON	
HEIS 3 OG 4 - STOLTEGNING	
HEIS nr. 303193-94	
Målestokk 1:10	Dato. 6/6-98
Tegnet 1:20	Sign.
Godkj.	Att.