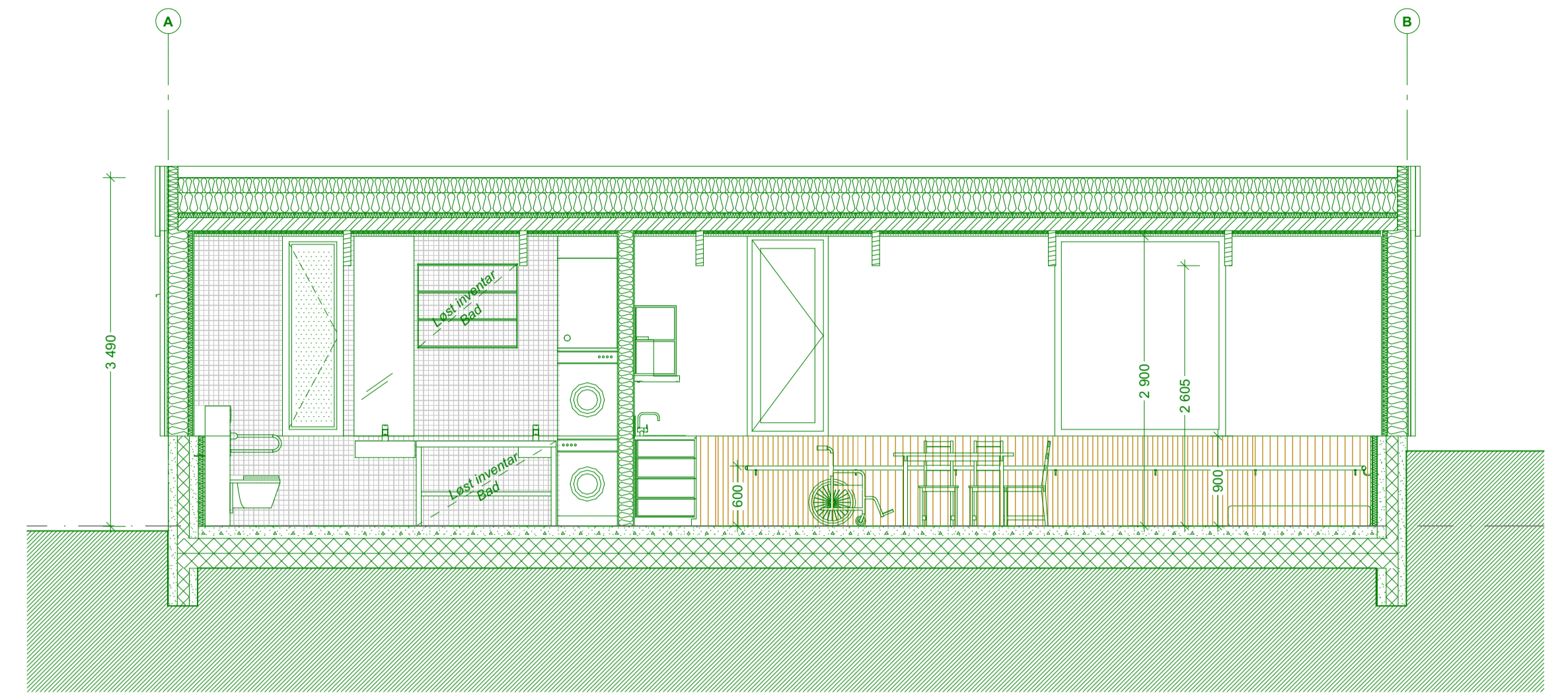
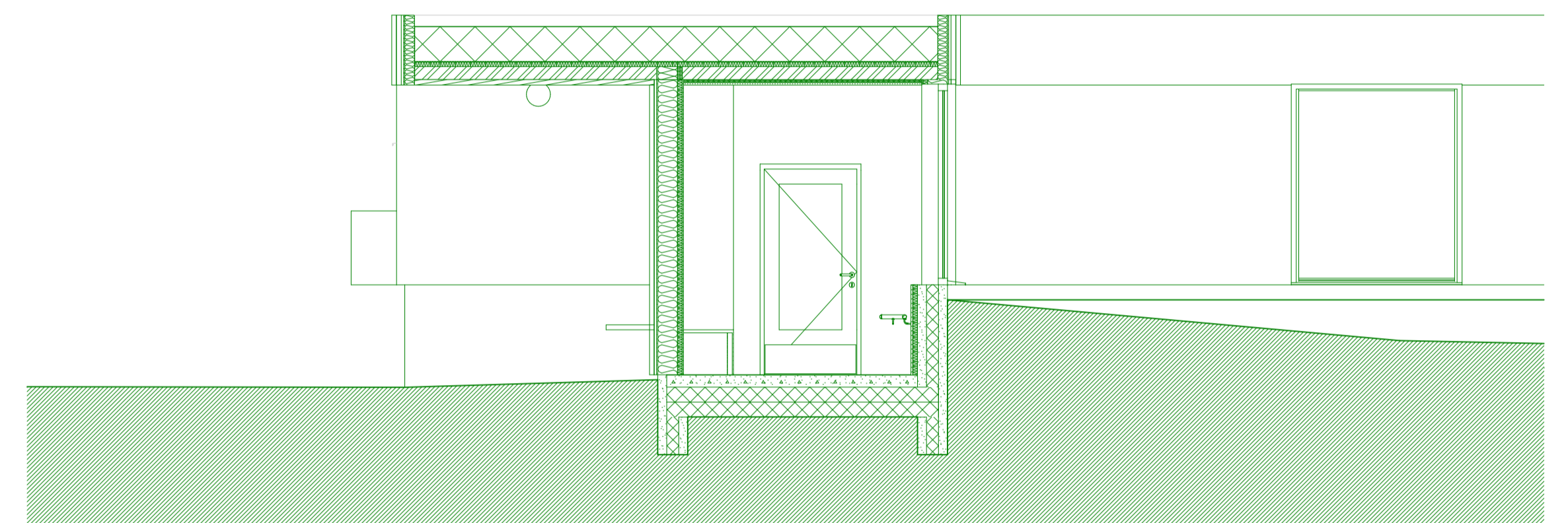


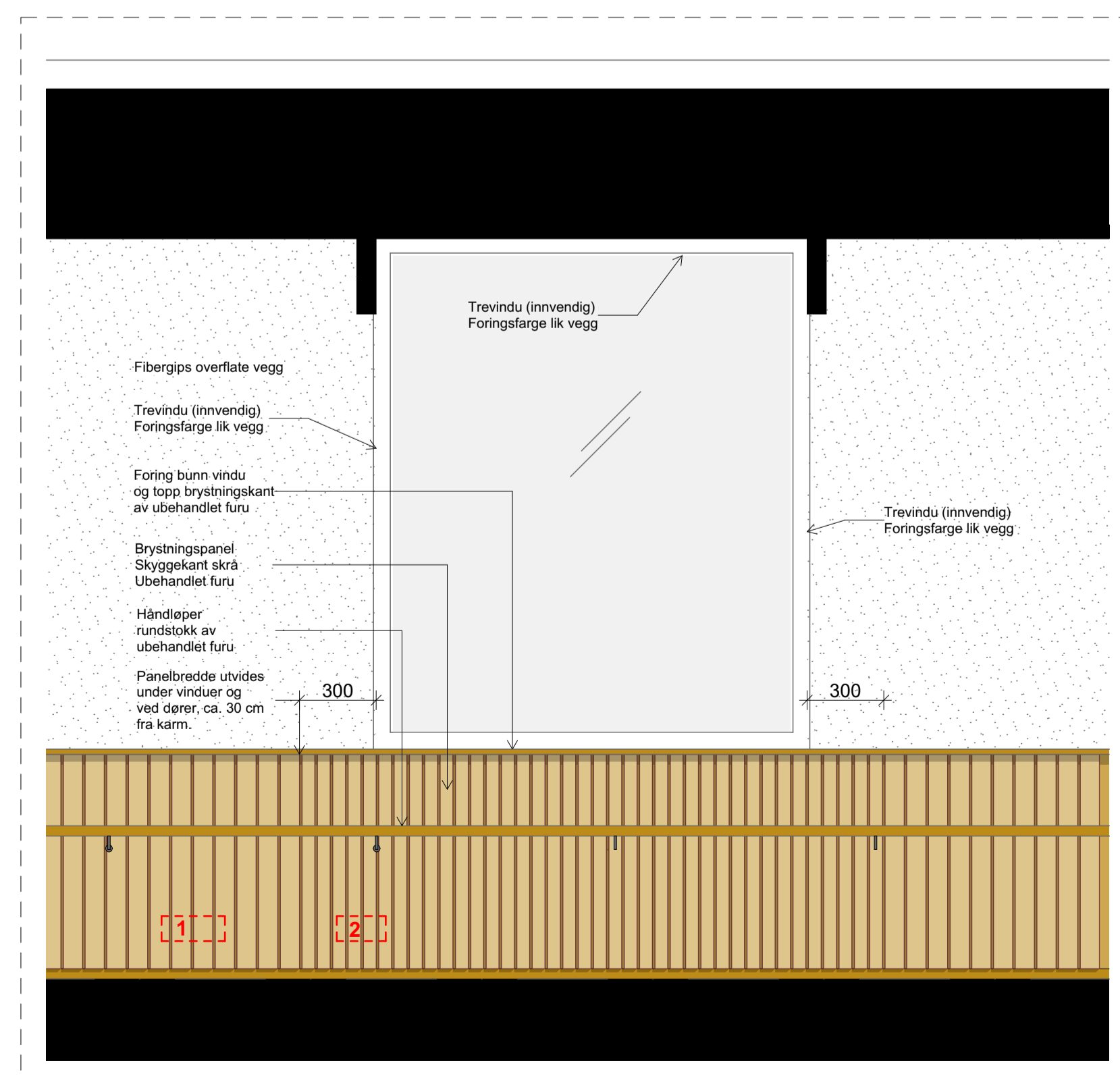
Snitt B-B



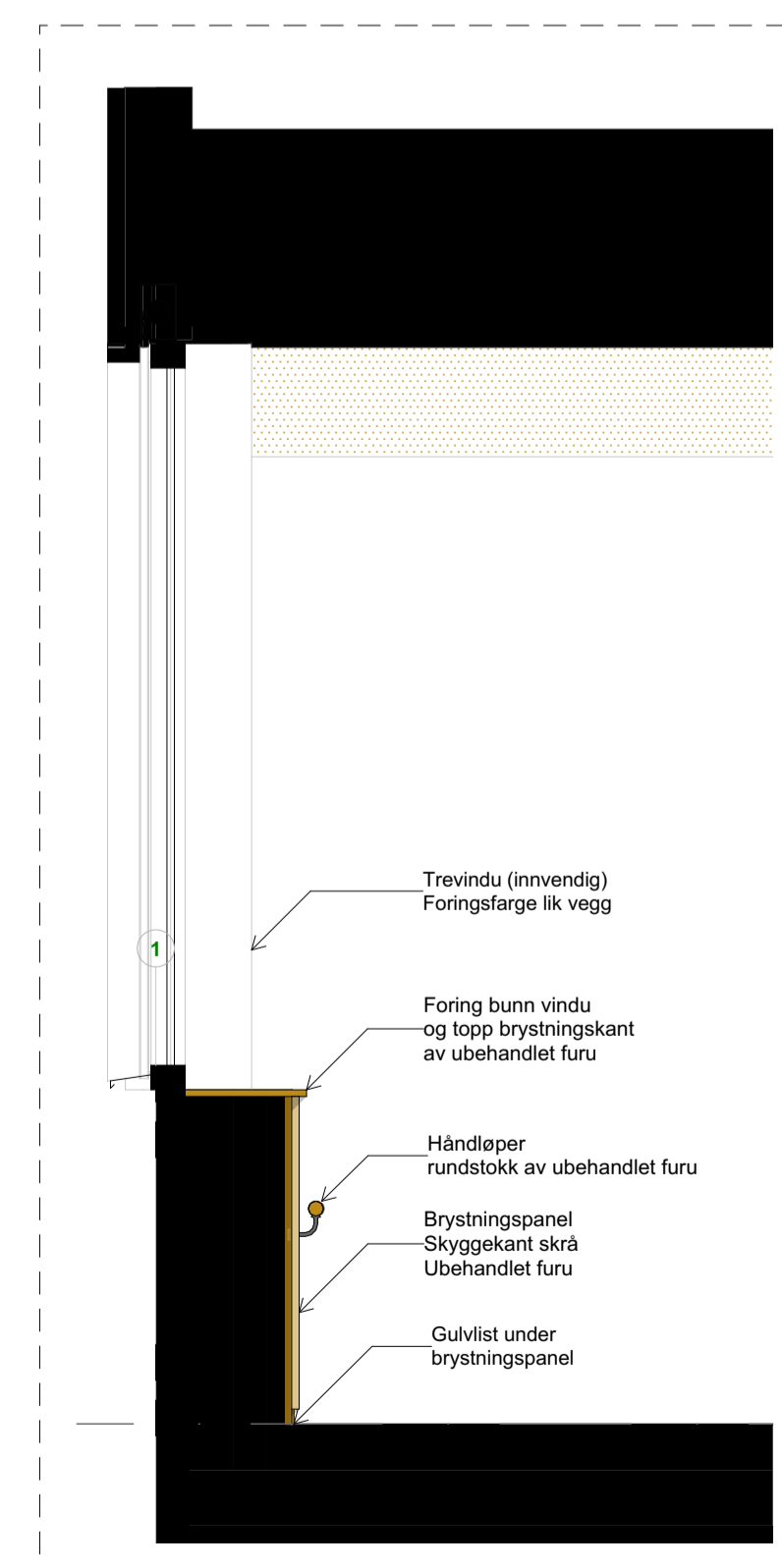
Snitt 1-1



Snitt 2-2

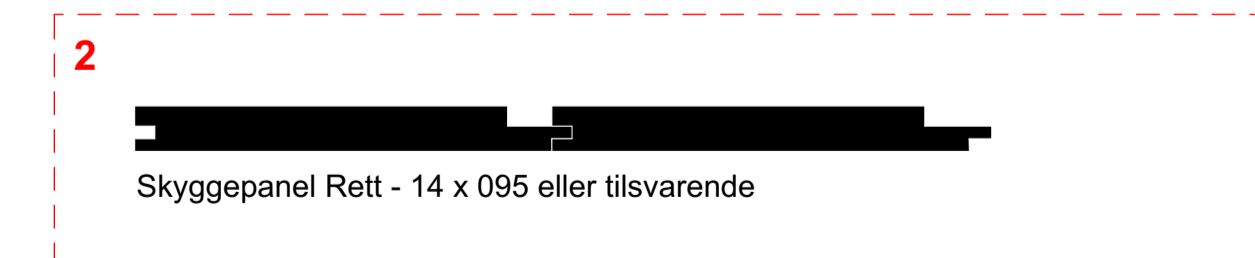
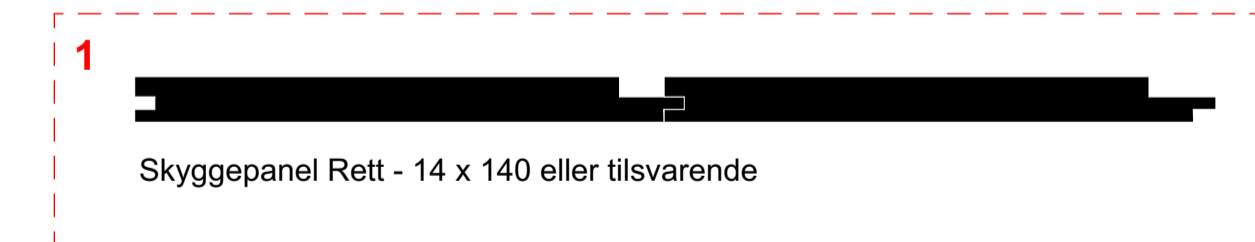


Prinsipp Oppriss interiør 1:20



Prinsipp Snitt interiør 1:20

Prinsipp - Brystningspanel 1:2



A	Pilert hovedmål / snitt B og 1	22.03.24	UE	PA
REV	Beskrivelse	Dato	Saks.	KS

Orientering

G/Bnr.: 216/31

Tittel: **Stonglandet skole**

Tiltakshaver: Senja Kommune  
Rådhusveien 8 Fimmsnes 9300  
E-post:bjorn.lauransen@senja.kommune.no Tlf: 77871000

Prosjekterende: Arkitektkontoret Amundsen as  
Postboks 101, 9251 Tromsø  
pa@arkitektamundsen.no www.arkitektamundsen.no Tlf: 415 65 924

Tilbudstegninger	Tegner UE	Prosjektnummer 23.17	Mål (A1) 1:50, 1:20	Dato 22.03.2024
Tegning Snitt og oppriss	Saksbeh. PA	Tegn.nr. A30-01	Rev. A	