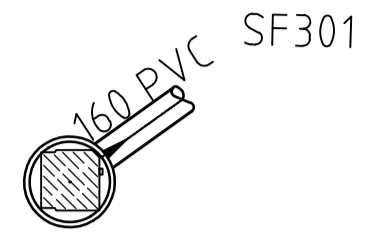
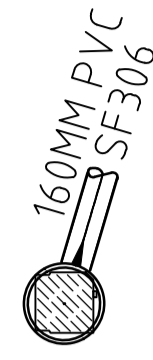


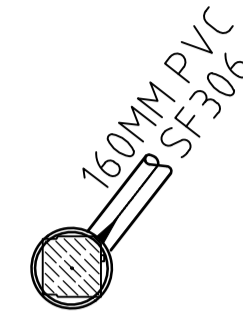
HS301 - ϕ 425
 H=Ca1,05 m
 Type rist/kantstein
 Plast PP



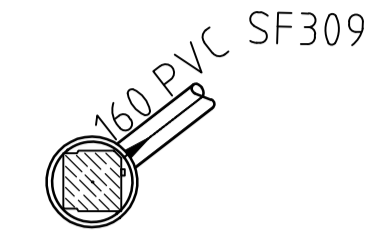
HS302 - ϕ 425
 H=Ca1,50 m
 Type rist/kantstein
 Plast PP



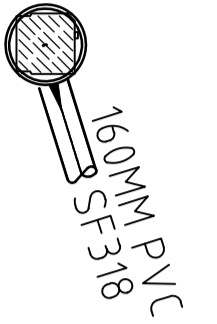
HS303 - ϕ 425
 H=Ca1,10 m
 Type rist/kantstein
 Plast PP



HS304 - ϕ 425
 H=Ca1,10 m
 Type rist/kantstein
 Plast PP



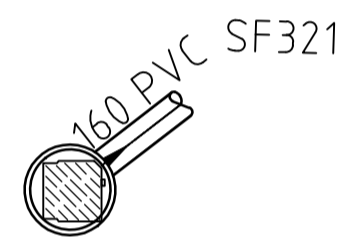
HS307 - ϕ 425
 H=Ca1,10 m
 Type rist/kantstein
 Plast PP



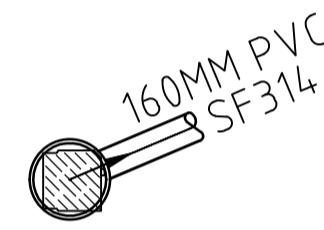
HS308 - ϕ 425
 H=Ca1,05 m
 Type rist/kantstein
 Plast PP



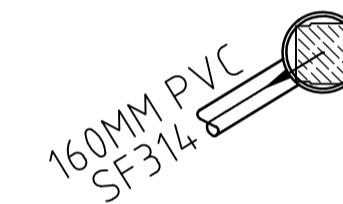
HS309 - ϕ 425
 H=Ca1,00 m
 Type rist/kantstein
 Plast PP



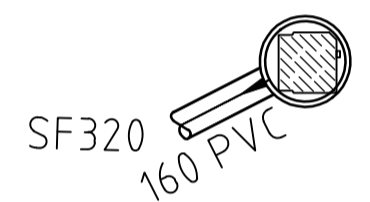
HS310 - ϕ 425
 H=Ca1,00 m
 Type rist/kantstein
 Plast PP




HS311 - ϕ 425
 H=Ca1,00 m
 Type rist/kantstein
 Plast PP



HS319 - ϕ 425
 H=Ca1,10 m
 Type rist/kantstein
 Plast PP



| | | | | | |
|--|--------------------|--------------------|----------------|-----------------------------------|-----------|
| Revisjon | Revisjonen gjelder | Utarb | Kontr | Godkjent | Rev. dato |
|  Nordland FYLKESKOMMUNE | | Tegningsdato | | 20.10.2023 | |
| Fv. 834 Nordstrandveien | | Bestiller | | Christian H. Forsmo | |
| Arbeidsavsnitt 2 og 3. Mælen-Tjeldberget | | Produsert av | | Multiconsult | |
| Hjelpesluker | | Prosjektnummer | | 8800336 | |
| | | Arkivreferanse | | 22/17455 | |
| | | Målestokk (format) | | 1:40 | |
| Konkurransesgrunnlag | | Koordinatsystem | | EUREF89 NTM14/NN2000 | |
| Utarbeidet av | Kontrollert av | Godkjent av | Konsulentarkiv | Tegningsnummer / revisjonsbokstav | |
| JCW | GeS | VeA | 10204454-05 | GH235 | |