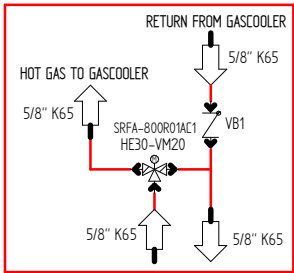


PLACED AFTER GASCOOLER HE30-TT21

OUTDOOR TEMPERATURE TT6



— 60bar
— 80bar
— PS 120b

0	31/01/2022	Guillaume MASTICO	Guillaume MASTICO
Index	Date	Designe par/ Drawn by	Verifie par/ Checked by
Page: 1/2	AR: 236612-00040	Client: MISTRAL	Customer: NORW
Description: SAP 4500005136 / NIBIO LOFTHUS		Type:	
Matière:		Designation: MISTRAL C02VP B114-30H24-80H	
Peinture/RAL:		Plan: SP236612-00040	
Code:			



	Temperature transducer
	Pressure transducer
	Shut of valve
	Schrader valve
	LP safety switch
	Heat exchanger with fan
	HP safety switch
	Solenoid valve
	Filter, Filter drier
	Plate heat exchanger

	Oil separator
	Level transducer
	Safety valve
	Oil heater
	Liquid separator
	Liquid receiver
	Elect. controlled valve
	Sight glass
	Sight glass with indikator
	Compressor
	Oil pump

	Inlet
	Outlet
	Thermistor

Medium / Fluid group		CO2 (R744) / 2	Allow. work pressure	discharge	-1/120 bar
Max electrical current		112A	Allow. Work pressure below -10°C	discharge	0 bar
Oil Type		RENISO C85E	Allow. Work température	discharge	-0/+120°C
Module		B+D	Allow. work pressure	liquid	80 bar
Manufacturer		PROFROID	Allow. Work pressure below -10°C	liquid	40 bar
Year of construction		2022	Allow. Work température	liquid	-40/+50°C
Test pressure	discharge	132 bar	Allow. work pressure	suction	-1/60 bar
Test pressure	liquid	88 bar	Allow. Work pressure below -10°C	suction	40 bar
Test pressure	suction	66 bar	Allow. Work température	suction	-40/+50°C

0	31/01/2022	Guillaume MASTEO	Guillaume MASTEO		
Index	Date	Designe par/ Drawn by	Verifie par/ Checked by	Approuve par/ Approved by	Modification/ Revision
Page:	2/2	AR: 236612-00040		Client: Customer:	CARRIER REFRIGERATION NORW
	Description:		SAP 4500005136 / NIBIO LOFTHUS		
	Matière:	Type:			
	Peinture/RAL:	Désignation: MISTRAL C02VP B114-30H24-80H			
	Code:	Plan: SP236612-00040			