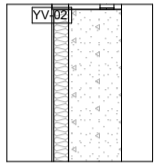
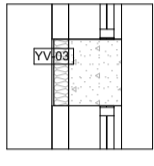


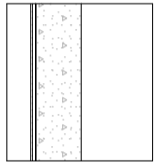
YV-01
 - Eksisterende betong yttervegg
 - Innvendig isolert påføring 98 mm
 - Hygieneplate 12 mm



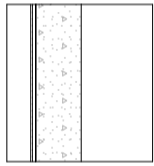
YV-02
 - Eksisterende betong yttervegg
 - Innvendig isolert påføring 98 mm
 - Våtromsplate 12 mm



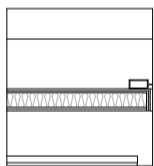
YV-03
 - Eksisterende betong yttervegg
 - Innvendig isolert påføring 98 mm
 - Gips 12 mm, males



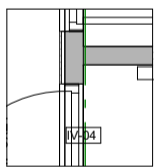
IV-01
 - Eksisterende innervegg
 - Lekt 23 mm
 - Våtromsplate 12 mm



IV-02
 - Eksisterende innervegg
 - Lekt 23 mm
 - Hygieneplate 12 mm



IV-03
 - Trestender
 - 2 x osb
 - 2 x hygieneplate 12 mm



IV-04
 - Males

