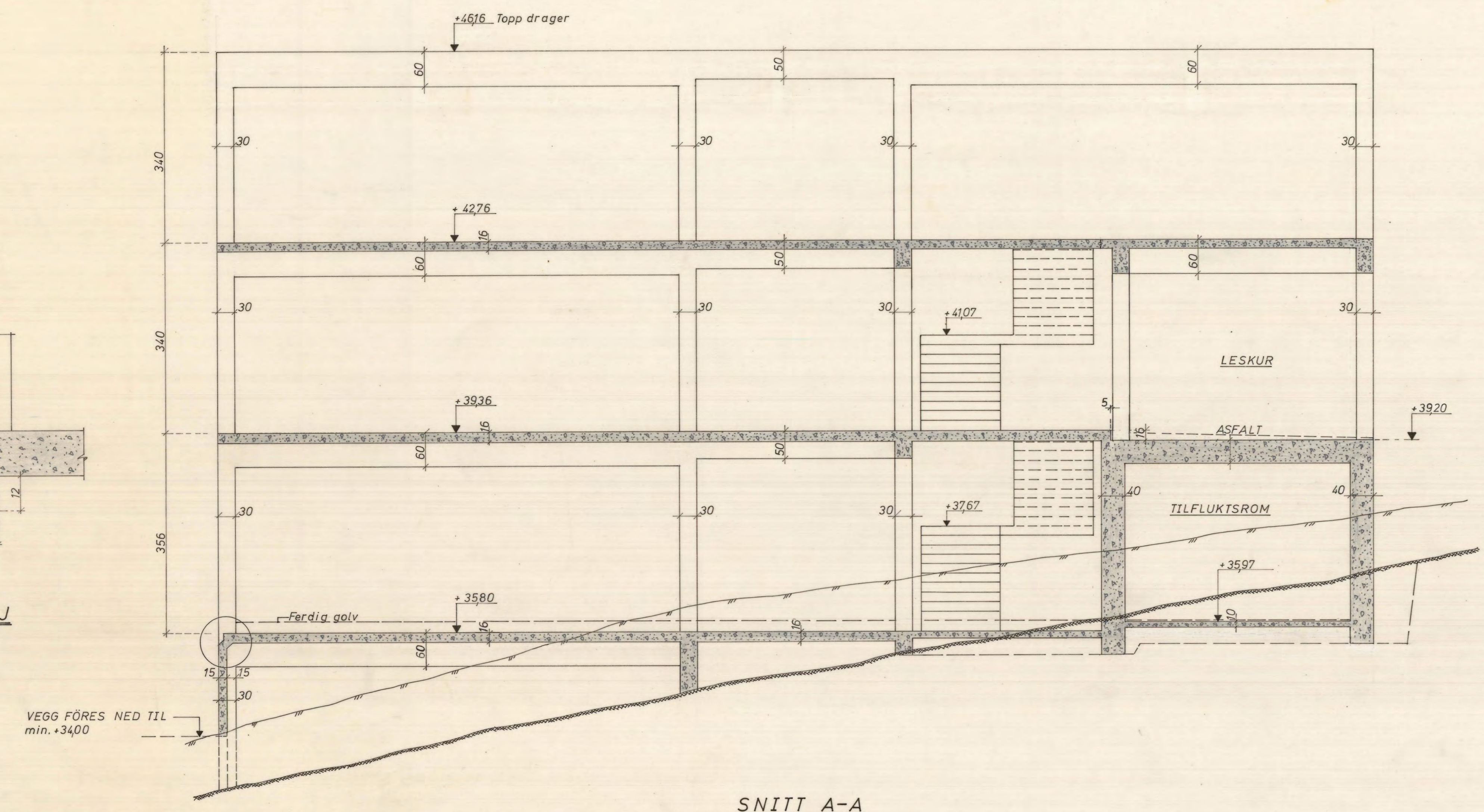
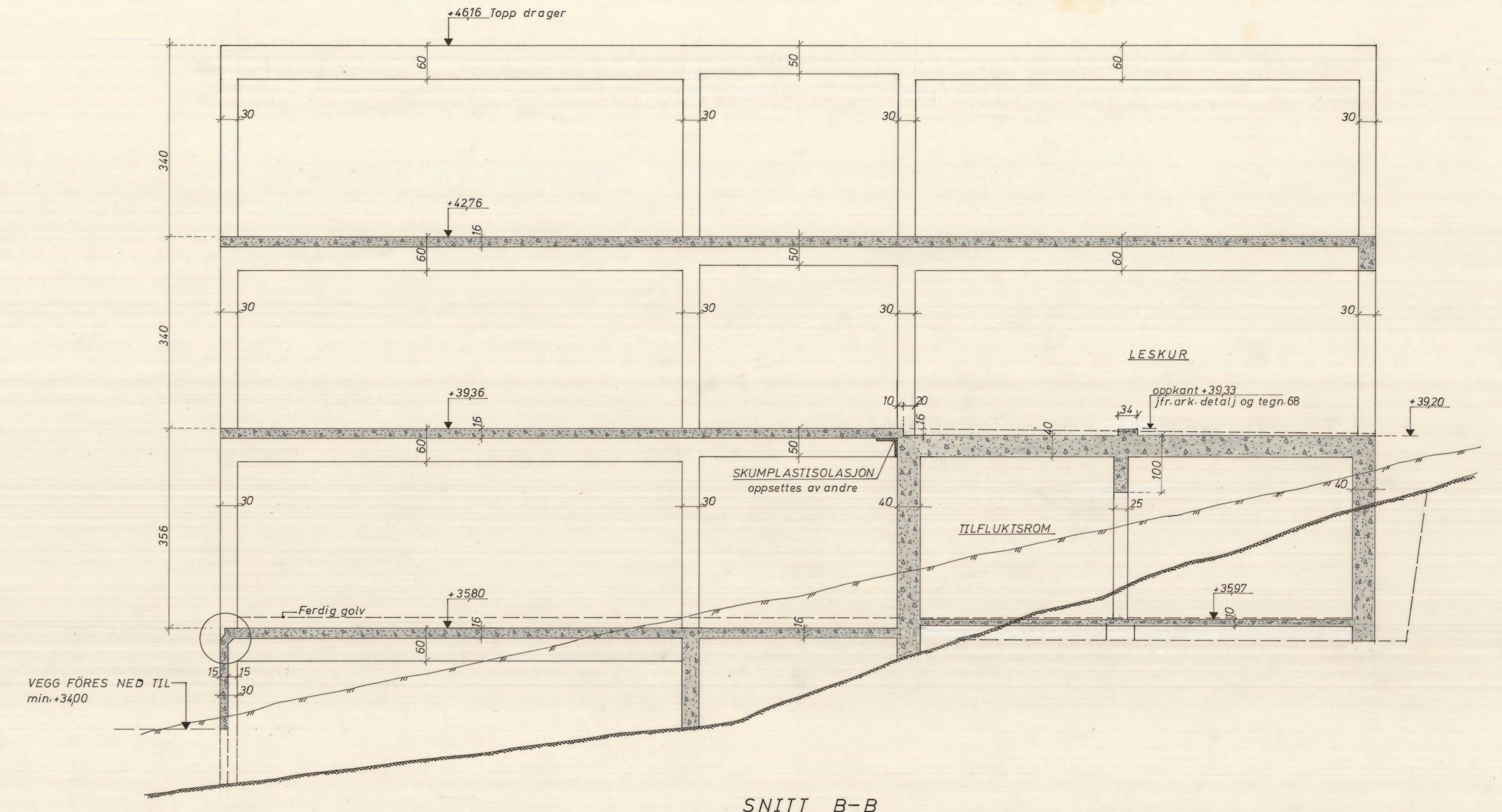


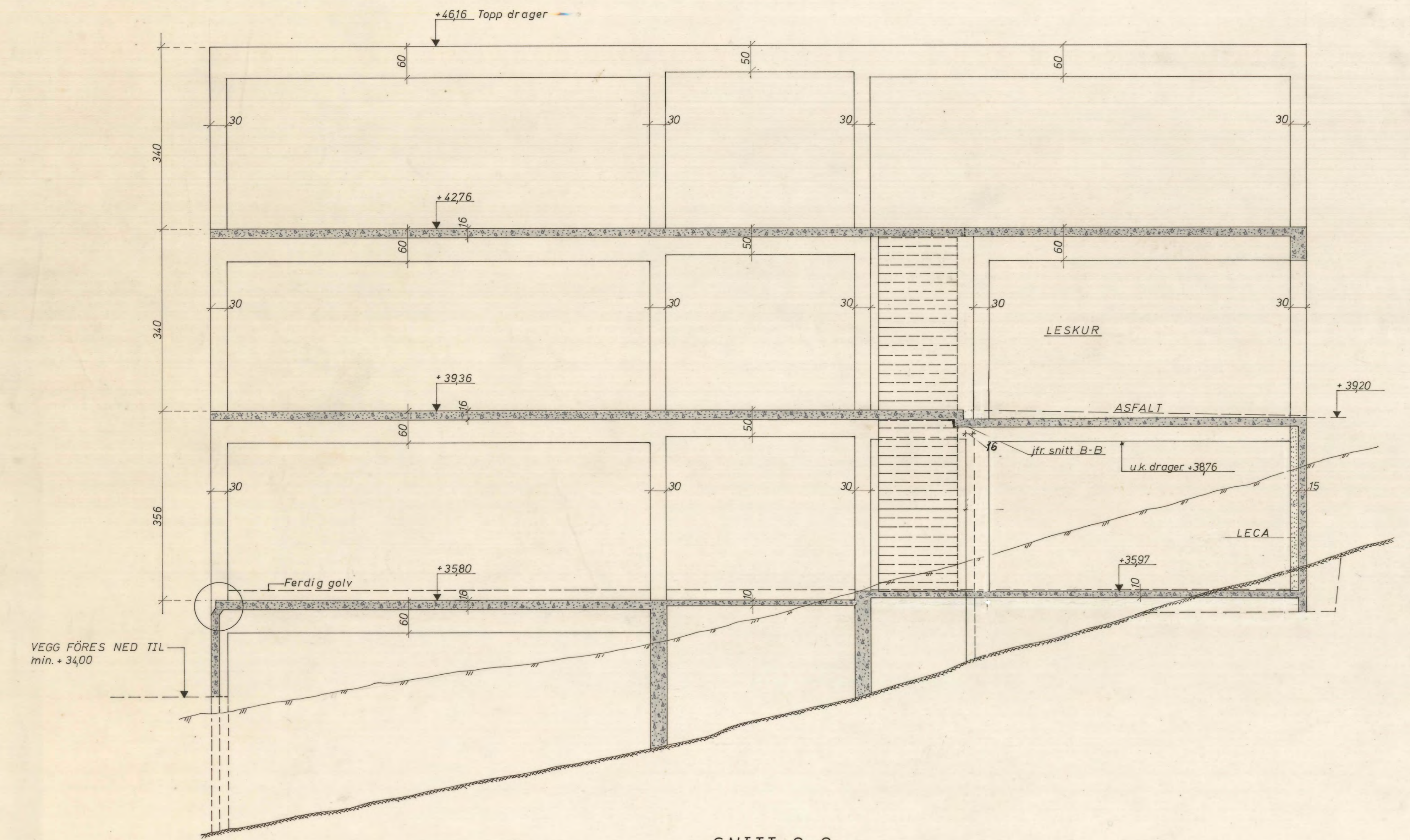
DETALJ
1:10



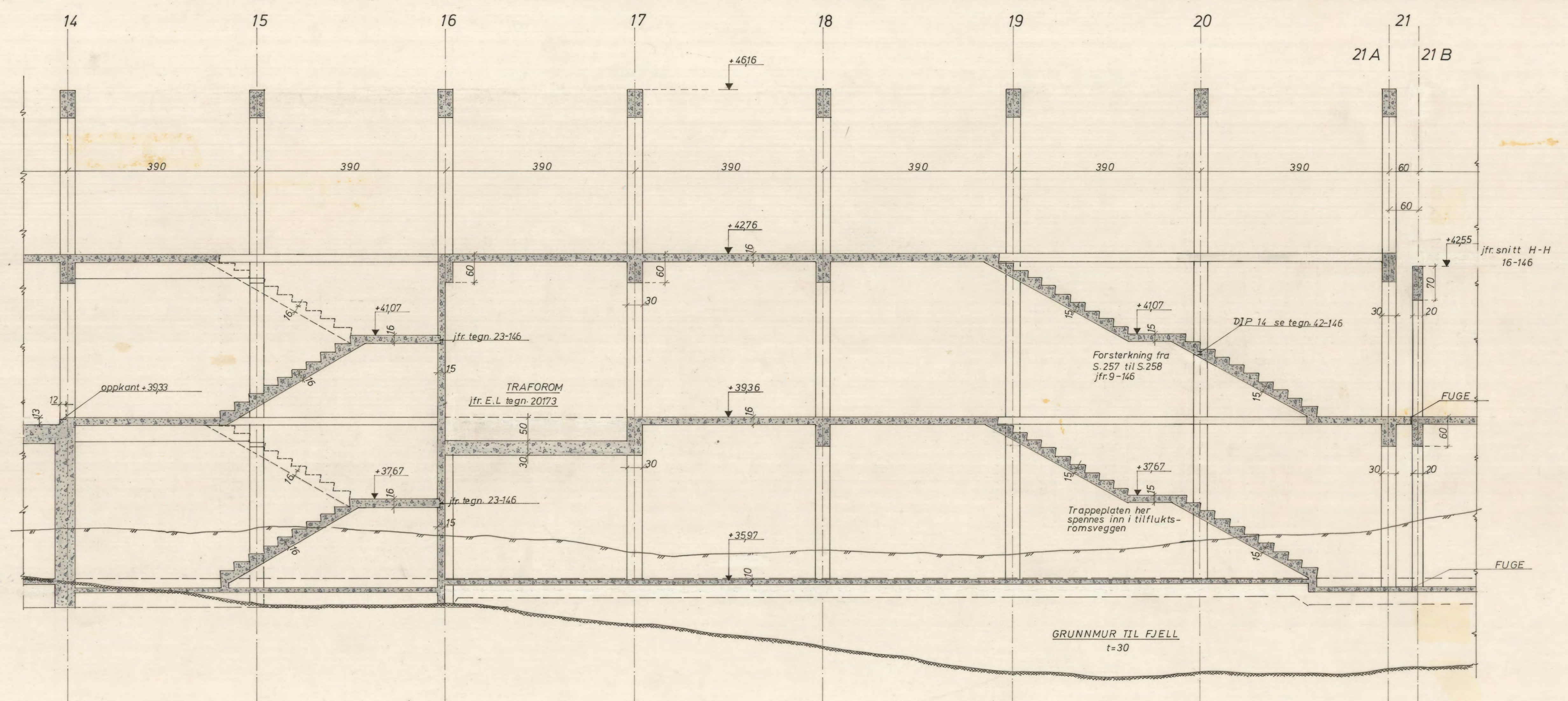
SNITT A-A
1:50



SNITT B-B
1:50

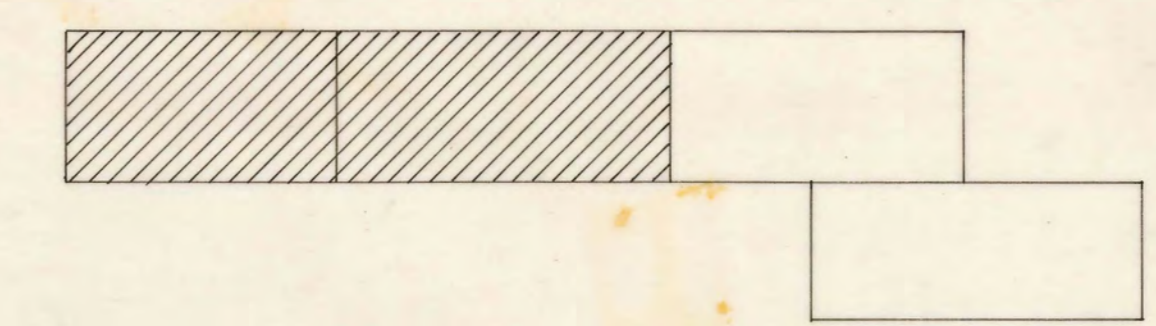


SNITT C-C
1:50



SNITT D-D
1:50

3,72
3,72
7,72



REV 9/11-68
REV 1/10-68

KLASSEROMSFLÖY

UNGDOMSSKOLE U1
SNITTEGNING

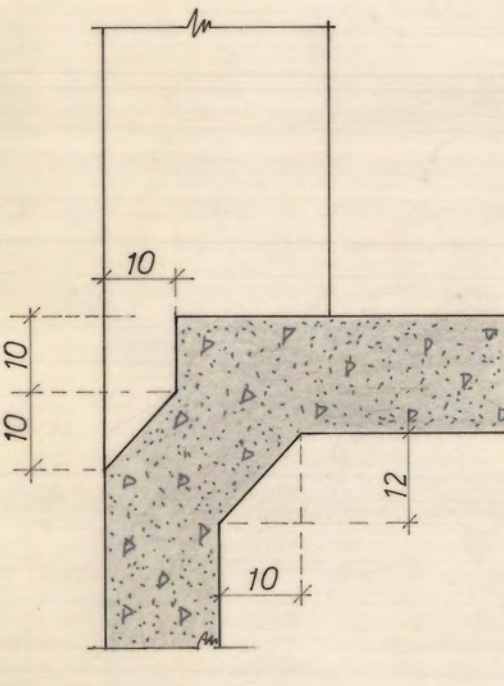
Målestokk 1:50

Opparbeidet av: []

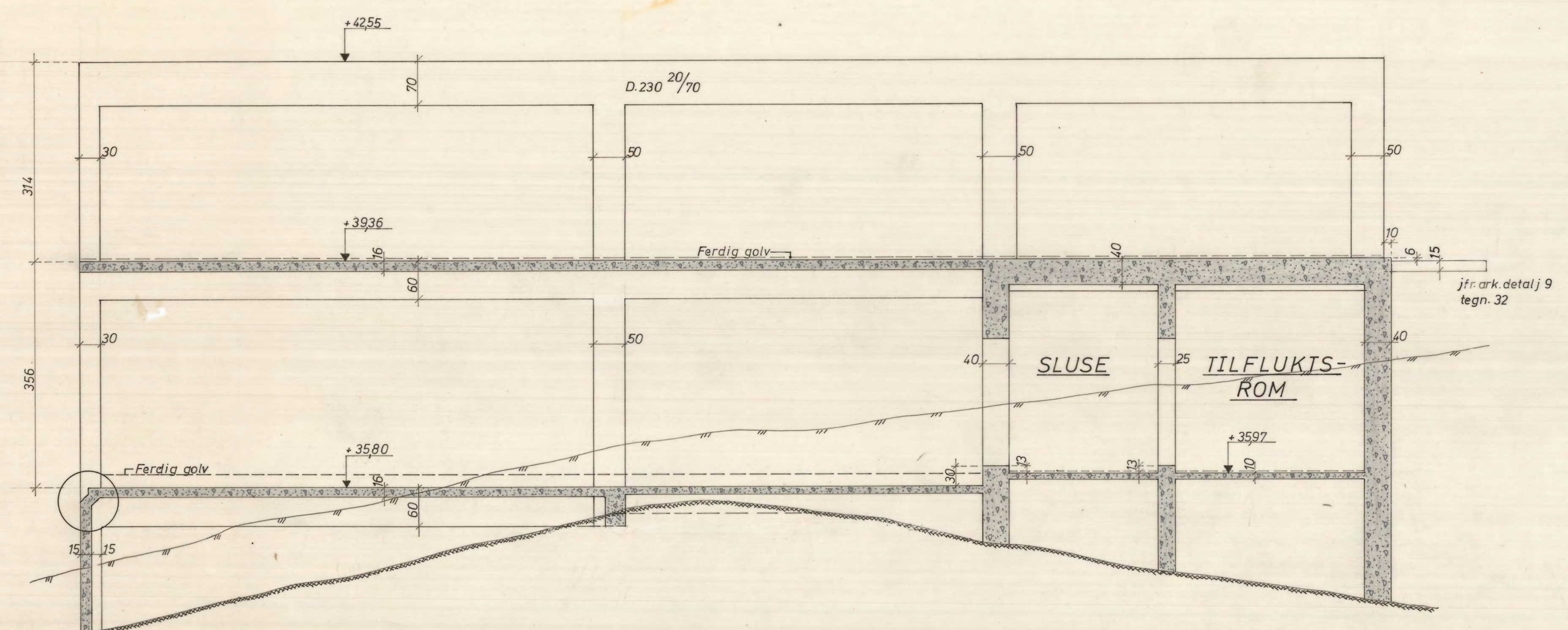
Etterrettet av: []

Kommunens Stedliger og Konsulent i Jærstøleng

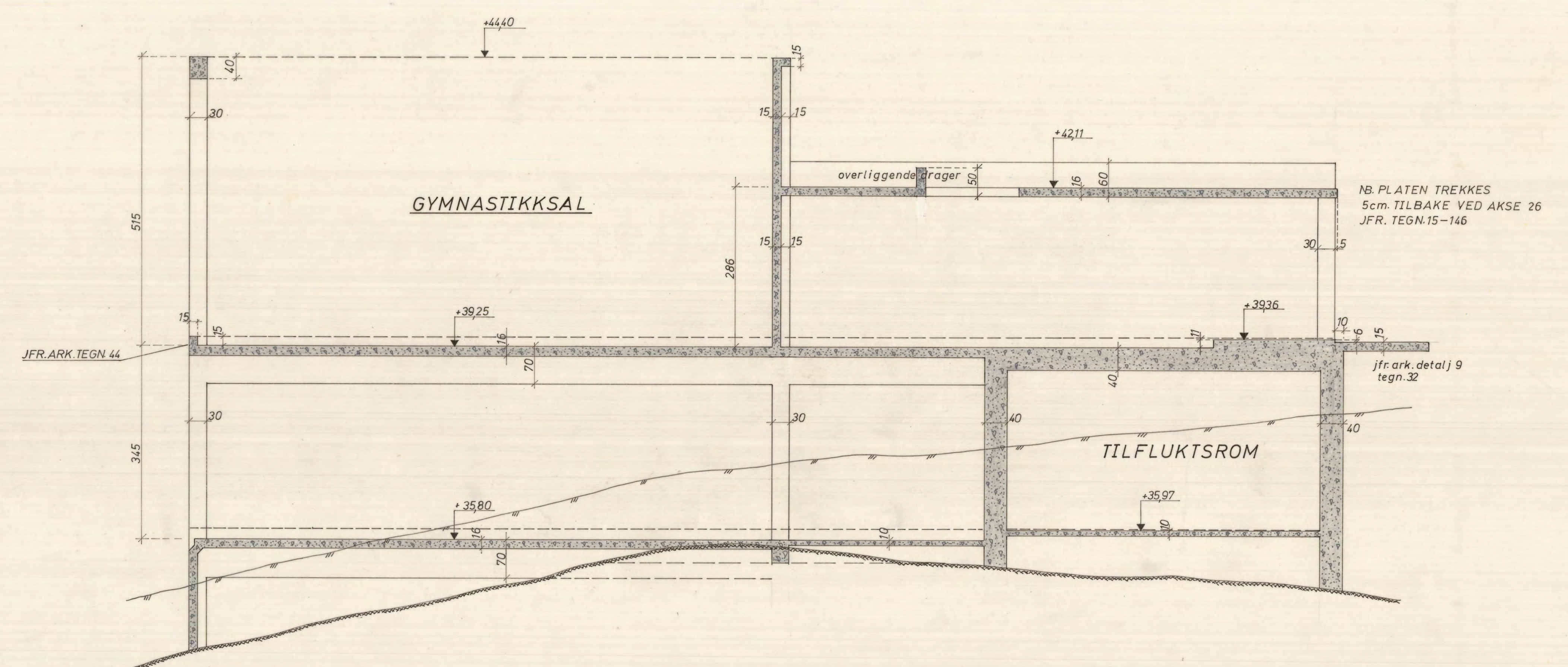
Nr. 12-146



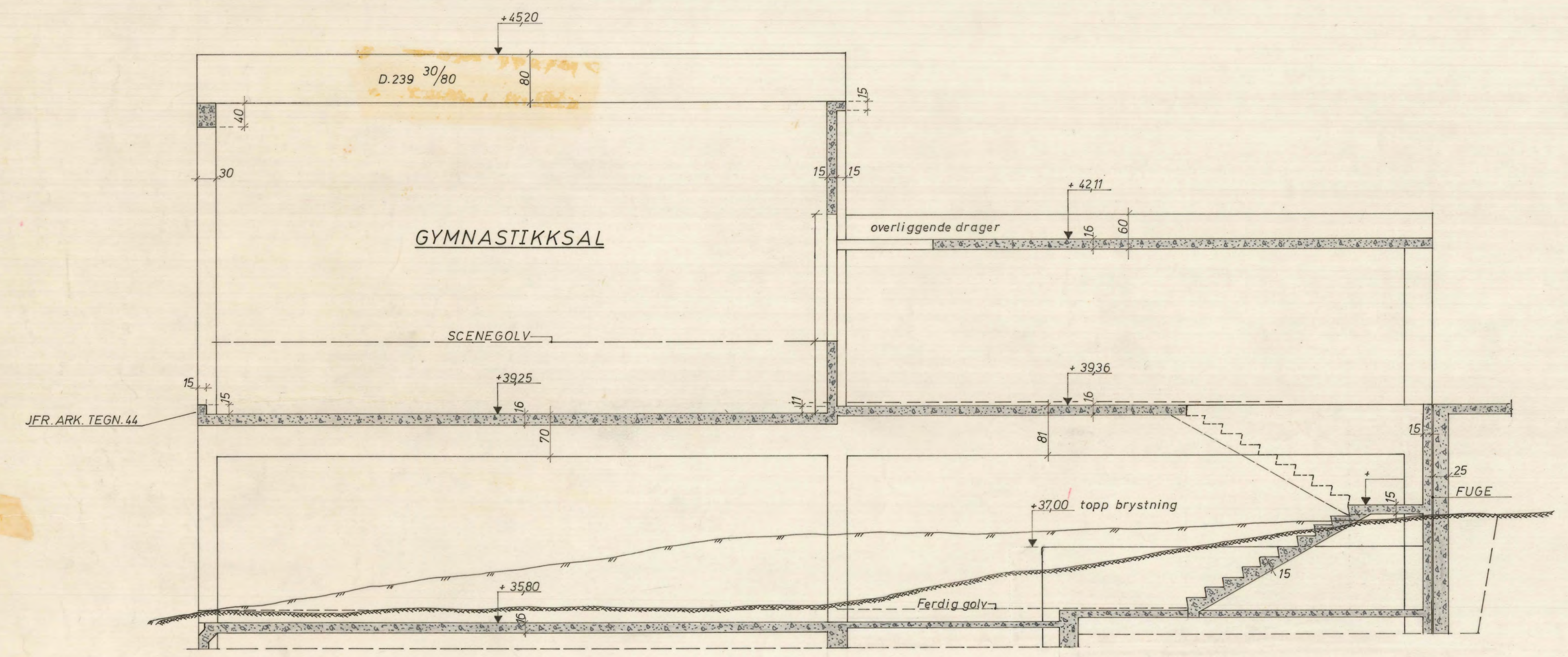
DETALJ
1:100



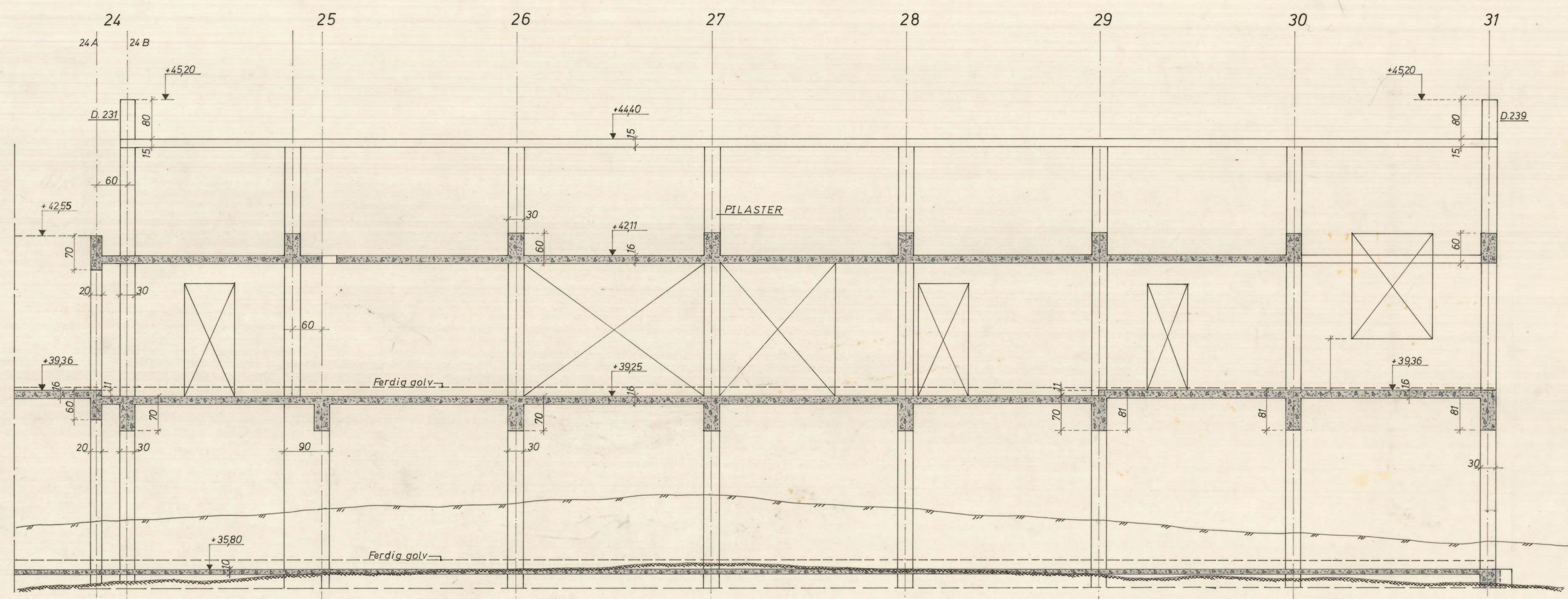
SNITT E-E
1:50



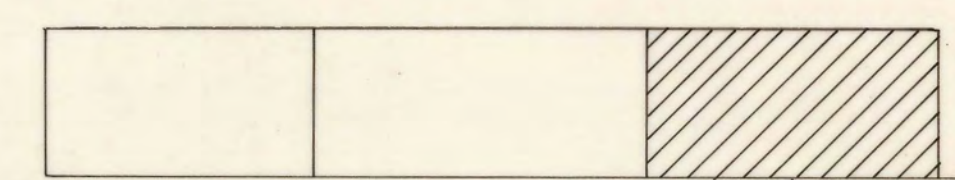
SNITT F-F
1:50



SNITT G-G
1:50

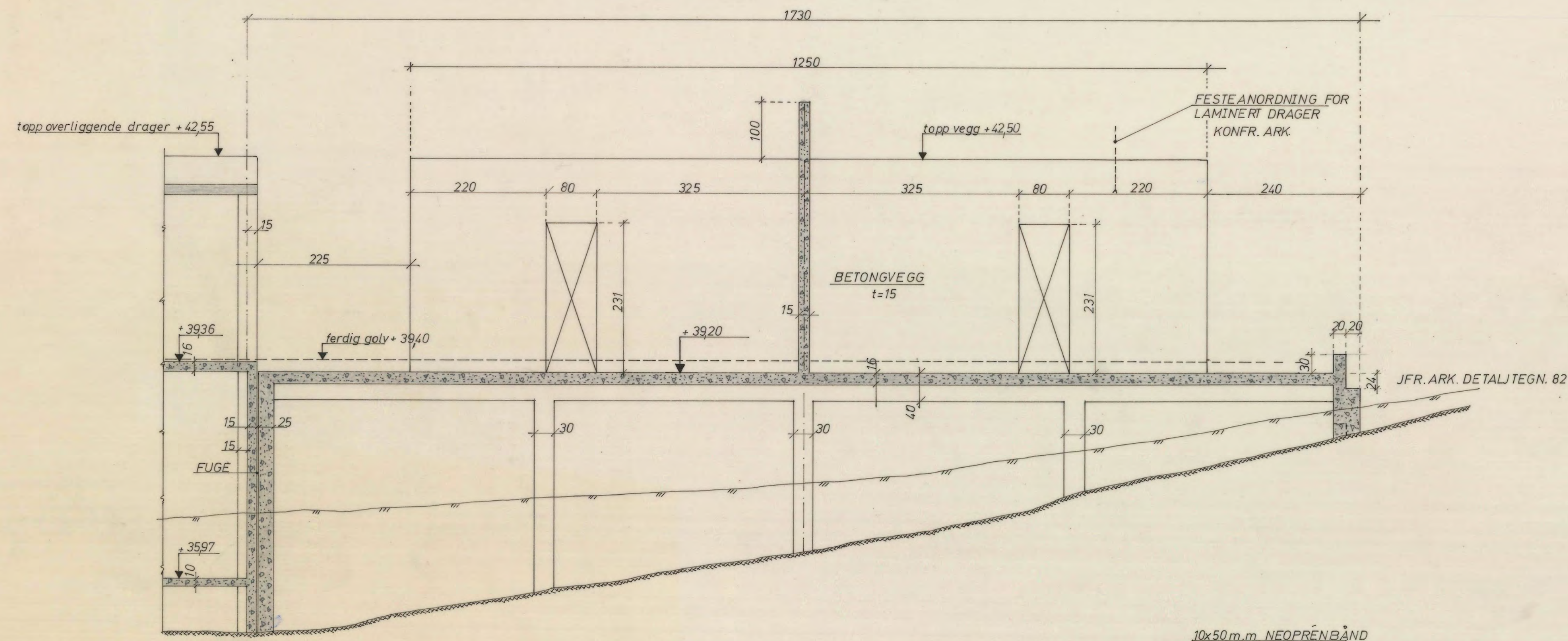


SNITT H-H
1:50

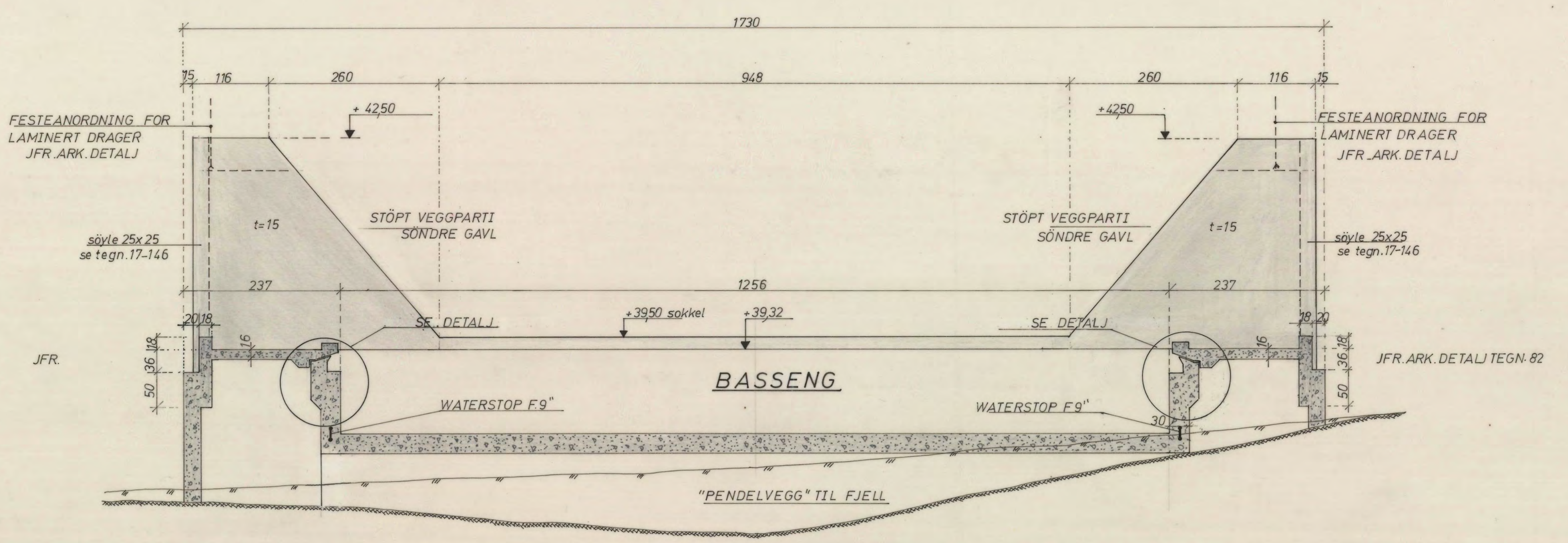


REV. 3/10-68
GYM.SAL OG VESTIBYLE

UNGDOMSSKOLE U.1	Målestokk	1:50	1:50	1:50
SNITTEGNING OG DETALJ	1:10	1:10	1:10	1:10
Kommunens Statiker og Konsulent i Jernbetong	16-146			

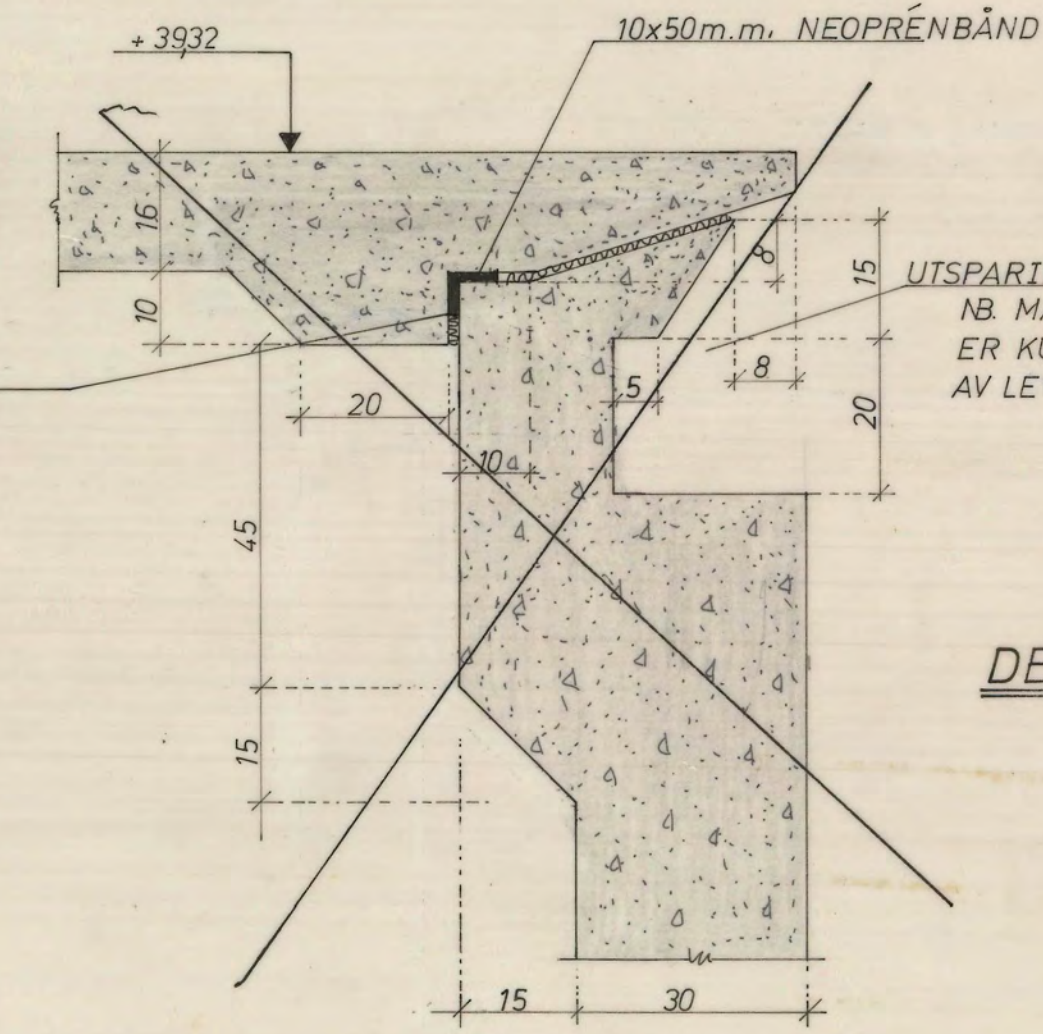
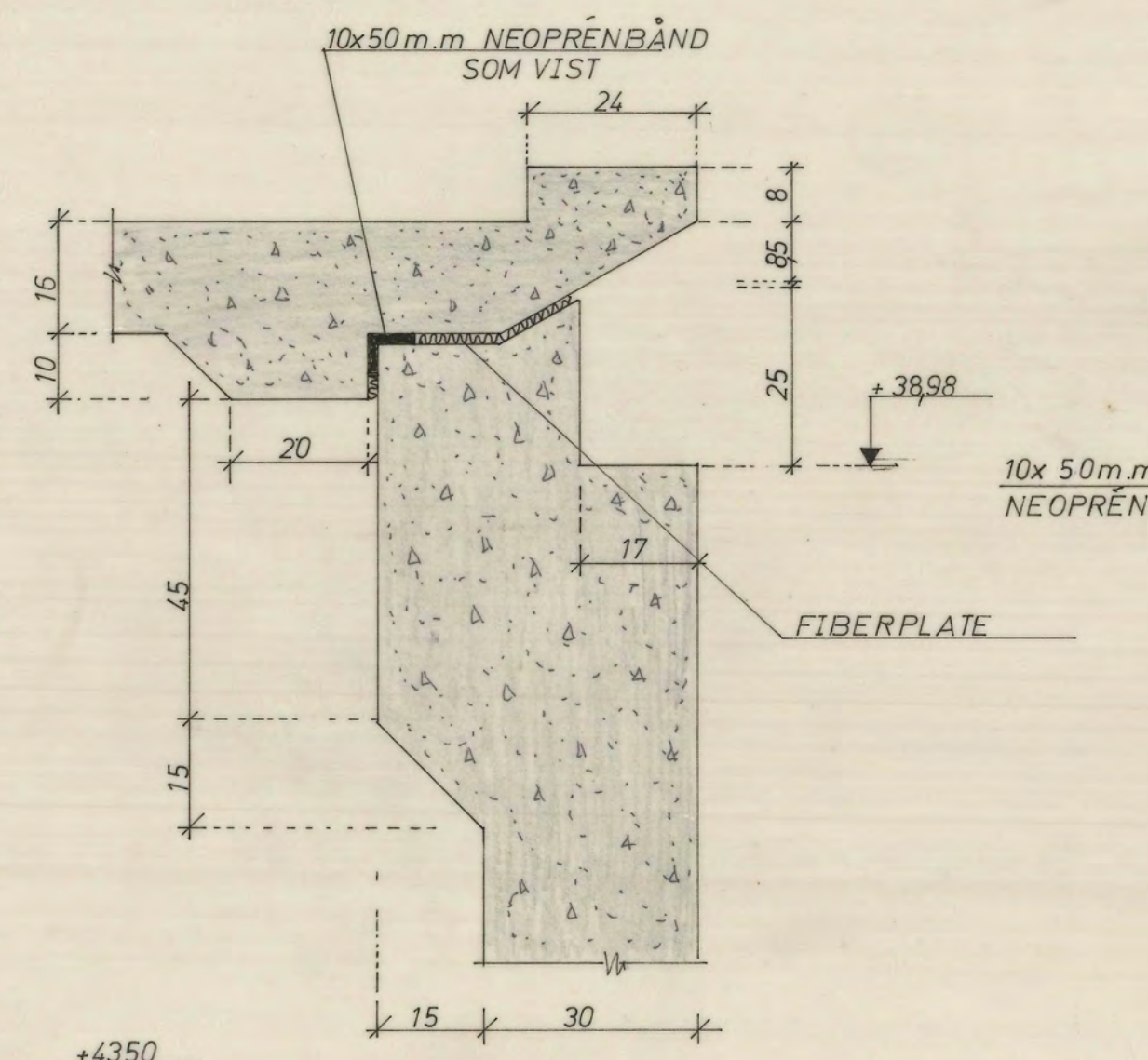


SNITT I-I
1:50

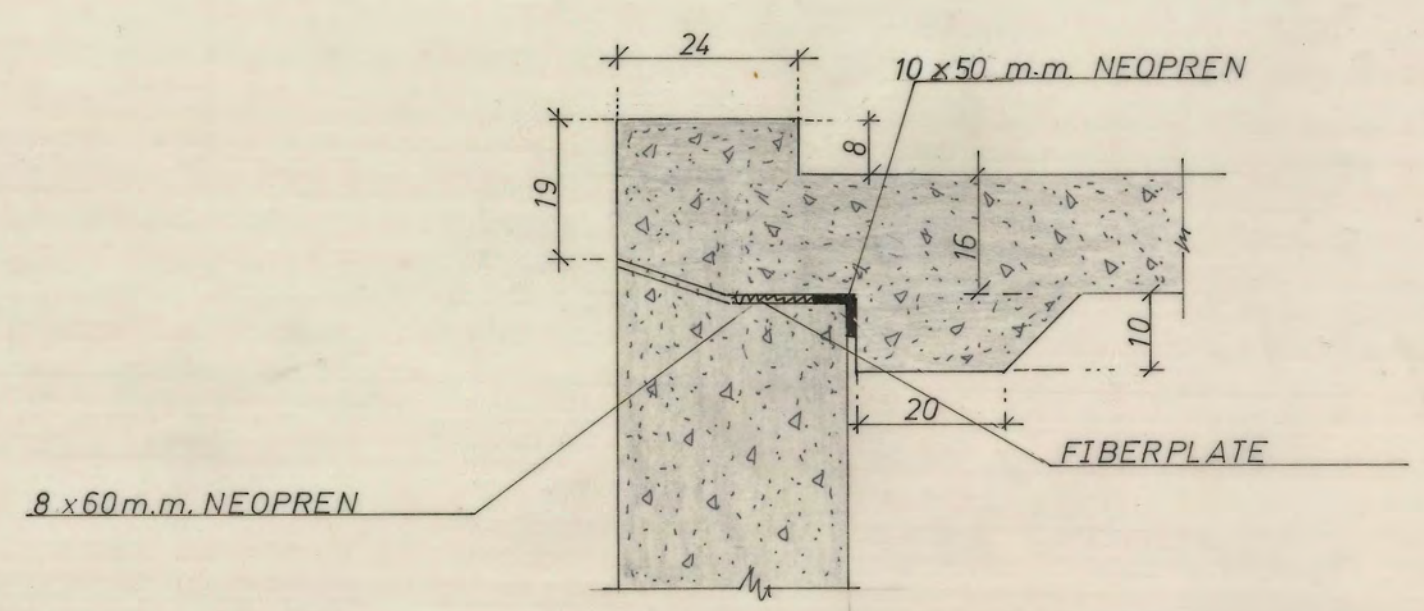


SNITT J-J
1:50

ENDELIG
DETALJ
1:10

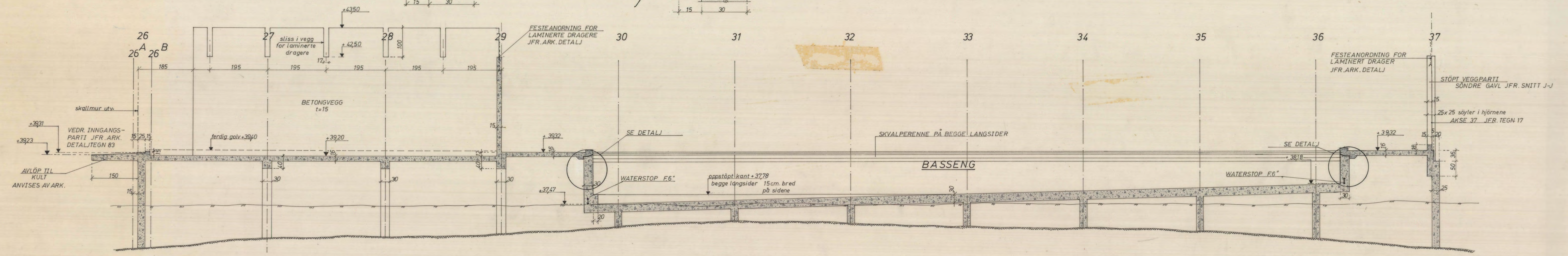


DETALJ TOPP BASSENG LANGSIDENE
1:10



DETALJ TOPP BASSENG KORTSIDENE
1:10

NB. ARKITEKTENS DETALJTEGNINGER
MÅ FØLGES



SNITT K-K
1:50

REV. 6/5-69
REV. 7/1-69
REV. 6/3-69
REV. 12/3-69

SVÖMMEHALL

UNGDOMSSKOLE U.1	Målestokk 1:50	Tegnings- og 1:10	H.N.
SNITT OG DETALJ	Trac.		
Erfattning for:			
Kommunens Støtter og Konsulent i Jernbetong			Nr. 18-146
Erfattet av:			