

Incoming Sieve Analysis (ISA)

Batch no. 10386 Project: Sample Weight: 210,51

Screen	Gram	Percentage	Accumulated	
2,5	10,04	4,77%	2,5	99,8
2	69,56	33,04%	2	95,0
1,6	42,75	20,31%	1,6	62,0
1,4	8,72	4,14%	1,4	41,7
1,18	6,42	3,05%	1,18	37,6
1	3,89	1,85%	1	34,5
0,8	14,24	6,76%	0,8	32,7
0,63	21,82	10,37%	0,63	25,9
0,5	14,25	6,77%	0,5	15,5
0,2	13,68	6,50%	0,2	8,8
0	4,75	2,26%	0	2,3
		99,81%		

Generation type : 3

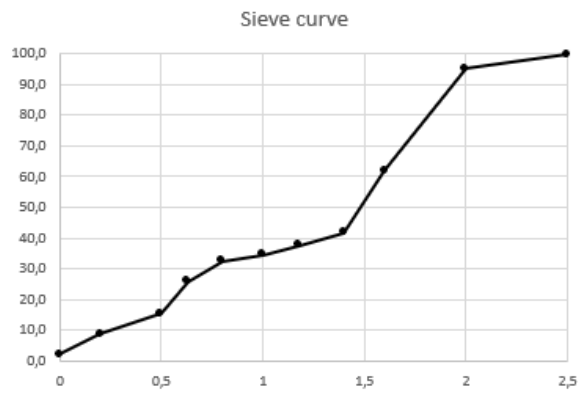
Rubber: 1.0 - 2.5 Type: SBR
Eurofins: No Color: Black

Sand: Color: x

Eurofins: Stone: Stone above 2.5

Turf :
Face turf: 1 Monofil, 1 threads, 2 colour Type: PE
Pile height: 50 mm

Thatche: No Type:



Backing:

Primary backing layers: 2
Non woven - woven: Non Woven Type:

Secondary backing type: Latex Backing

Fiberglass:

Note : Secondary backing går nemt istykker

Est. Standard values

Est. Rubber Amount

Est. Sand Amount

Date: 14-10-2021 Performed by: Helle Molbech