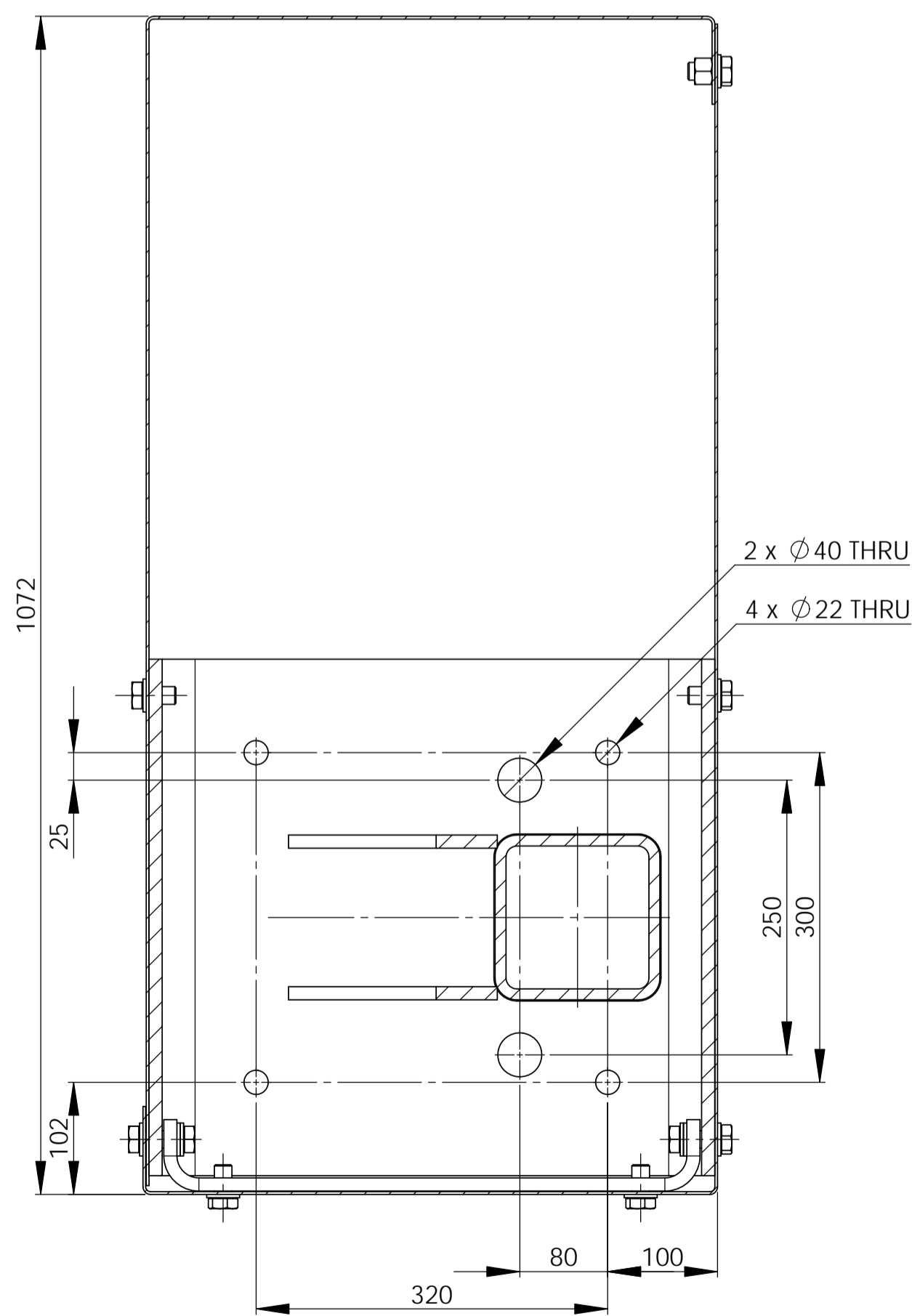
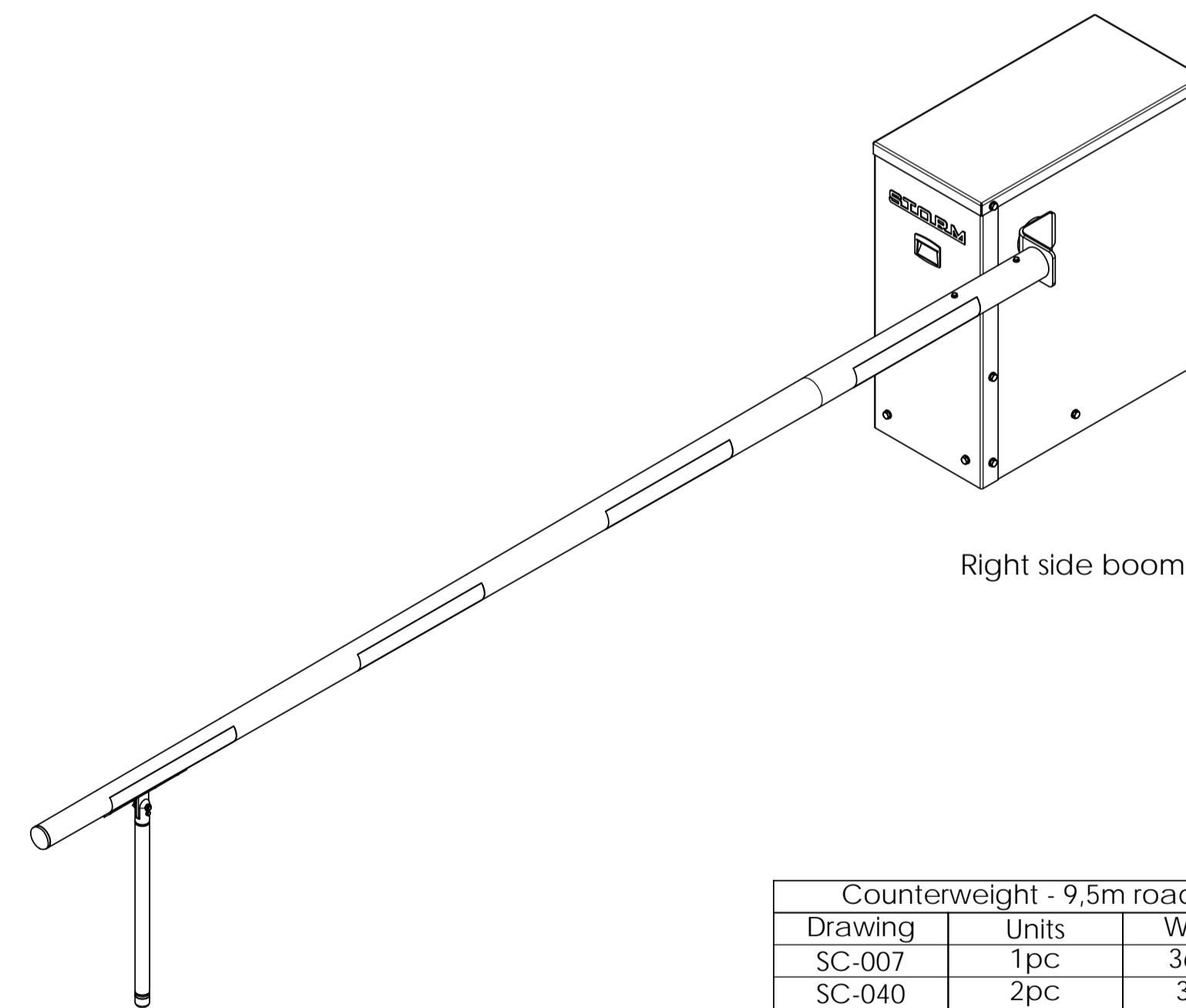


VIEW A
SCALE 1 : 5



SECTION B-B
SCALE 1 : 5



Type: Double boom
Total weight approx 450 - 500kg - depending on boom length and counterweights.
Note 2: Holes Ø40mm can be used for cable managment.
Note 1: Holes Ø22mm are used for connection with surface.

STORM CRANES		FINISH		DEBURR AND BREAK SHARP EDGES		DO NOT SCALE DRAWING		REVISION		002	
Variations on dimensions without tolerance are according to ISO 2768 M											
NAME	SIGNATURE	DATE				TITLE STORM CRANES FERRY BOOM 9500 DIMENSIONAL SKETCH					
DRAWN	WS	28.08.2020				DWG NO.		SC-083-100		A1	
CHKD						SCALE: 1:20		SHEET 1 OF 1			
APPRD	WS	28.08.2020				WEIGHT: /kg					
MFG											
Q.A.											