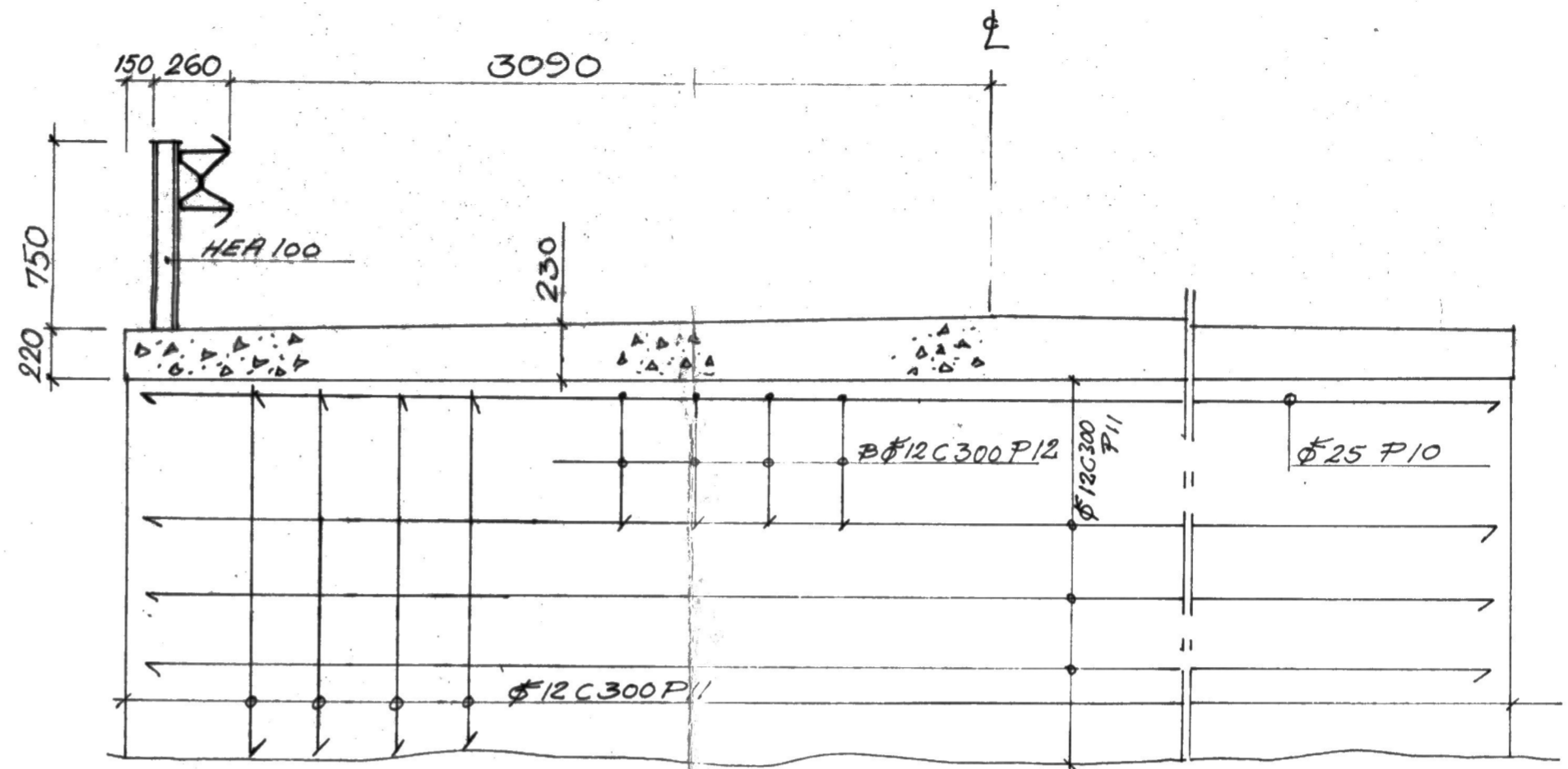
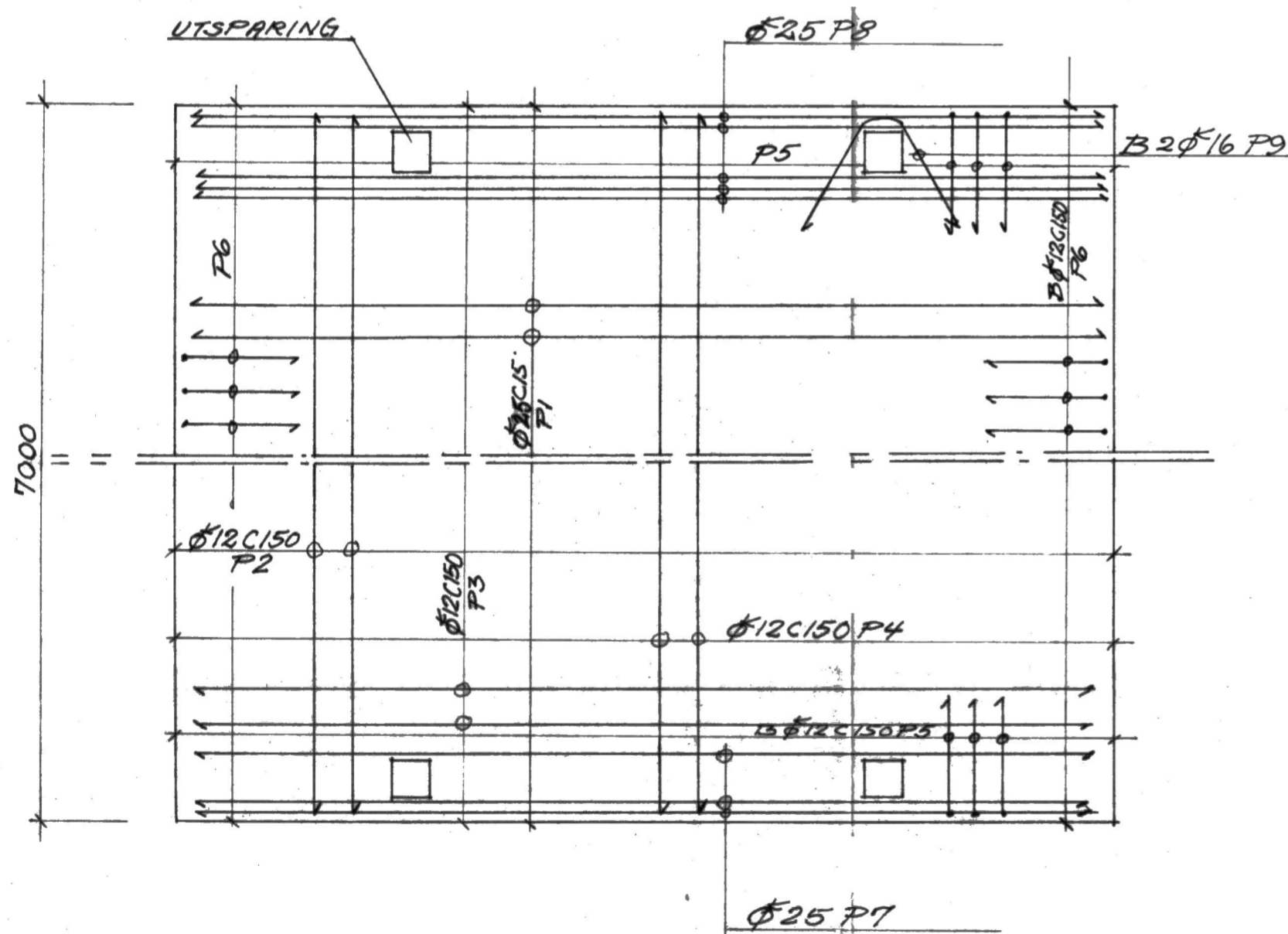


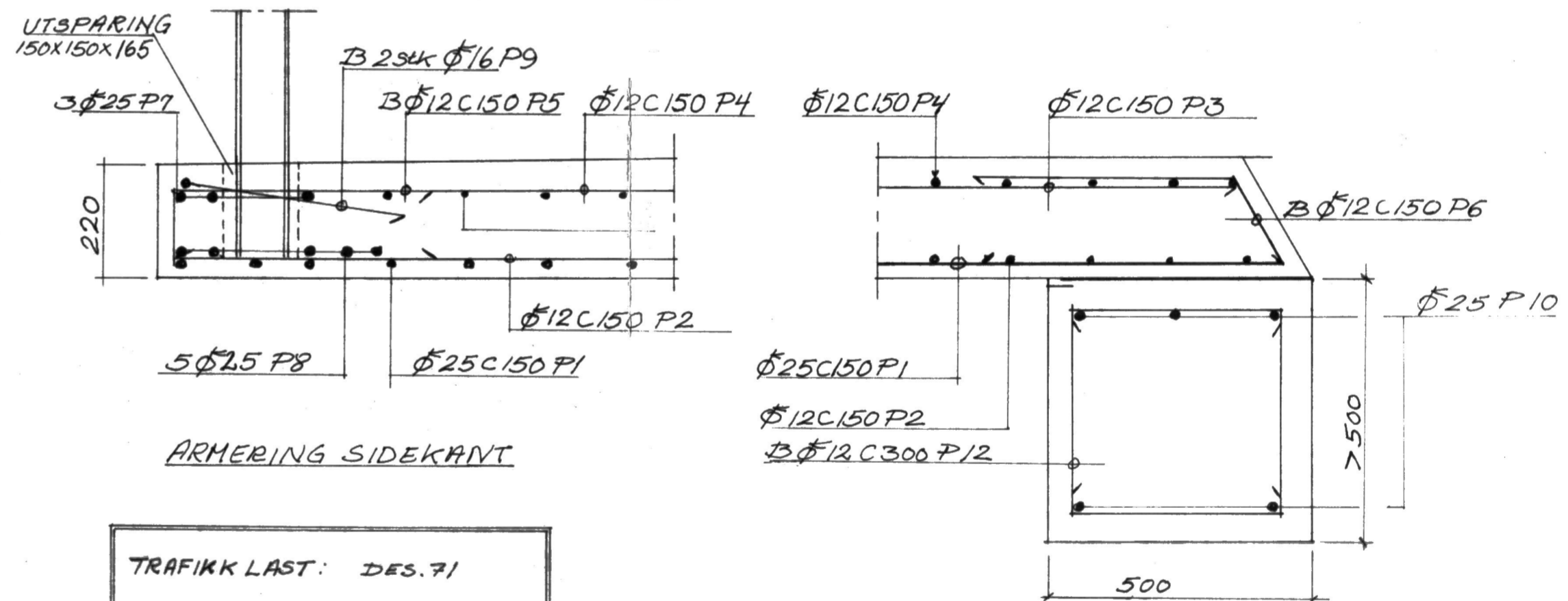
OPPRISS



ARMERING LANDKAR.



ARMERING BRUPLATE



ARMERING SIDEKANT

ARMERING OPPLÈGG

TRAFIKK LAST: DES. 71  
 BETONG: C-35  
 SYNK: 40-60mm  
 ARMERING: KS40  
 KS40s  
 OVERDEKNING:  
 OVERKANT PLATE 55mm  
 LANDKAR: 50mm  
 ØVRIGE: 25mm

Rev.	Beskrivelse	lru	Dato	Sign.
	Olderivvatn nr. 1933		Rv 17	
	<b>OLVIKVATN BRU</b>			68W 17/52a-01
	FORM- OG ARMERINGSTEGNING			MÅLESTOKK M = 1:25 M = 1:10
	VEGKONTORET I NORDLAND-FYLKE			Sign. <i>AP</i> Dato 25/1-82 Saksb. Sign. <i>AP</i>