

Is-sjøkiste ventilstyring

Jobbdetaljer

Start Dato	20.11.2022	Utføres av	Verksted	<input checked="" type="checkbox"/> Kritisk jobb
Varighet	1 Dag(er)	Valgte leverandør		
Fremdrift	0%	Eksternt Jobb Nr.		
		Jobbansvarlig		
		Kontrolleres av	Reders representant	

Lokasjon

Denne jobben gjelder følgende komponenter/

utstyr: 262 Is-sjøkiste (babord)

Følgende tjenester skal inkluderes som en del av arbeidsomfanget og omfattes av oppgitt pris for arbeidet:

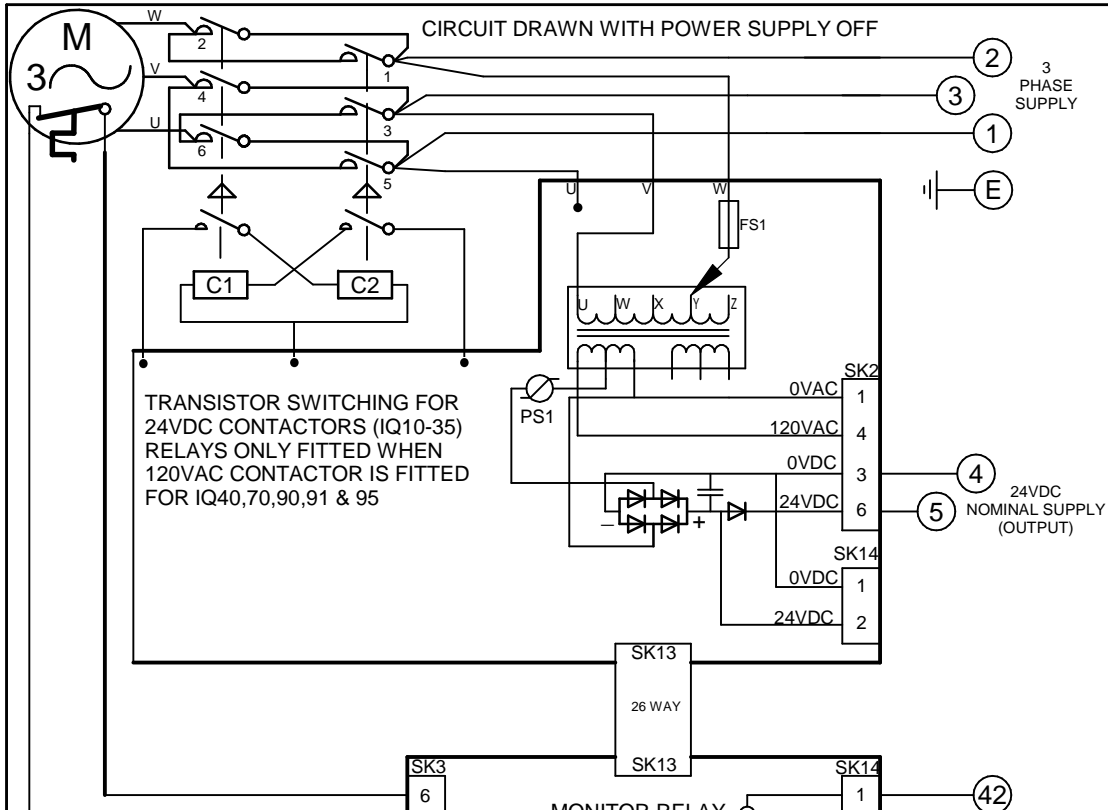
Rengjøring etter
Nødvendig materiale for utførelse av arbeidet skal leveres av Rederi.

Jobbeskrivelse

Det skal monteres to (2) stk nye ventilstyringer på iskiste ventil.
Eksisterende styring fjernes og eksisterende skap fjernes, se vedlagte bilde og elektrisk dokumentasjon.
Det monteres opp nye ventilstyringer og kobles til.
Alle tilførselskabler og signalkabel til styresystemet ligger klart 230 volt /24 volt til ventil.
Det må trekkes ny 6 lederkabel til galleri i forkant ca 30 meter. Det ligger eksisterende kabelgate til formålet.
Det monteres opp to (2) stk repetere på galleri på brakket. Repetere merkes med skilt for iskiste BB/SB ventil. Ventiler leveres av Rederi.

Vedlegg

sluse ventil is kiste 273
epost_10_28_13_13_22_Electric Electric Datasheet (Rev 2) Datas.xlsx
plasering av fjernstyring.JPG plasering av fjernstyring
epost_10_28_13_12_30_100B0006.pdf 100B0006
epost_10_28_13_12_55_iq10-18-e9.pdf iq10-18-e9



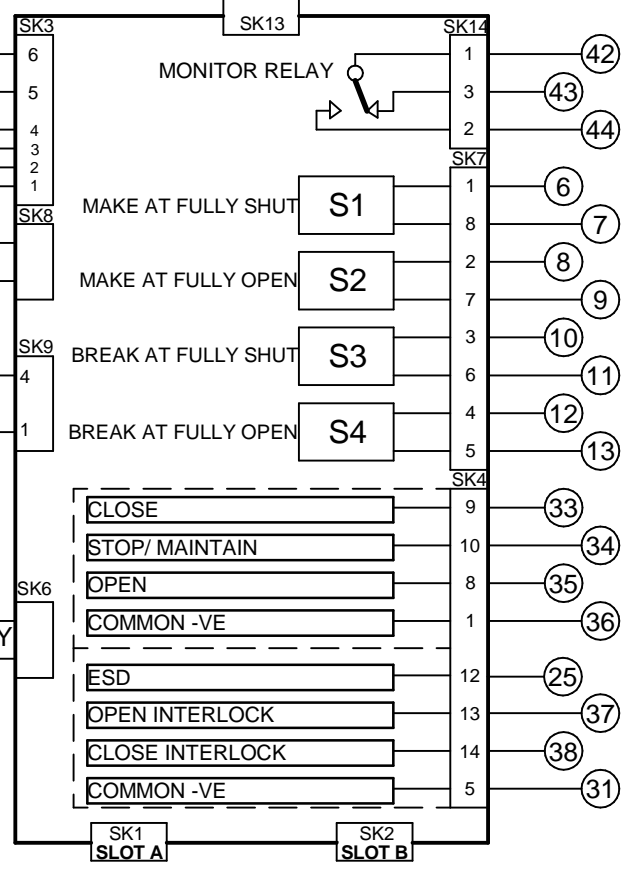
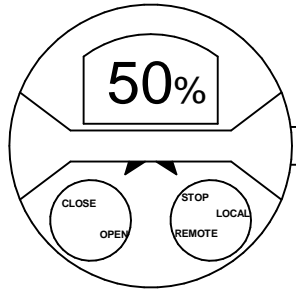
FOR TYPICAL REMOTE CONTROL DETAILS, SEE DOCUMENT RWS100

TRANSFORMER TAPPING OPTIONS	
Tap	Nominal 50/60Hz
TYPE 1	
W	220/230
X	380/400
Y	415/420
Z	440/460
FUZE FS1=250mA ANTI-SURGE	
TYPE 2	
W	346/380
X	480/500
Y	240/240
Z	550/575
FUZE FS1=250mA ANTI-SURGE	
TYPE 3	
X	660/660-690
Y	690/-
FUZE FS1=150mA ANTI-SURGE	

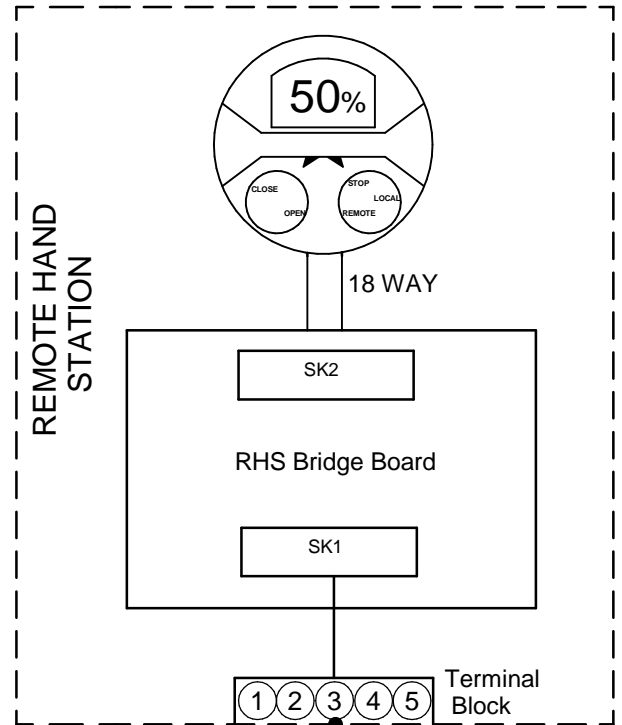
REFER TO SHEET 2 FOR NOTES & OPTION PCB'S IF FITTED



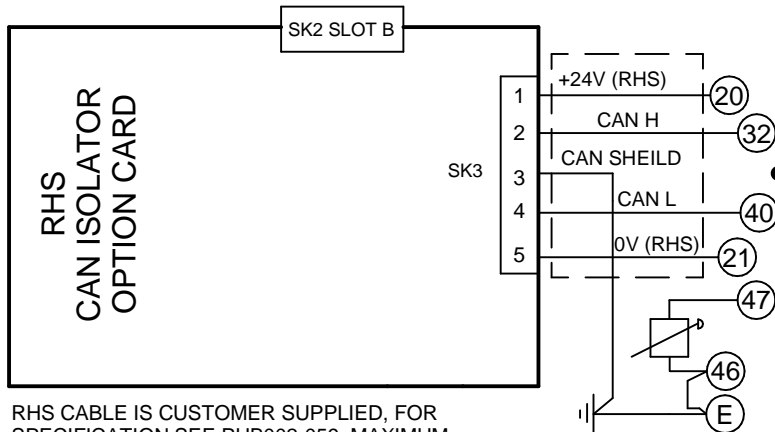
FS2 (IF FITTED) 100mA



Iss	Date	Chkd	Revision Details	www.rotork.com	IQ + RHS	Drawn by: S DINESH Date : 080814 Base WD: 100B0000 Job No : - - MI No : - -	Circuit Diagram Number 100B0006	Issue No 3	Sheet 1 of 2
1	080814	AS	First Release						
2	131114	JJB	Title description change.						
3	130515	JJB	CAN description: "+24 (RHS)" and "0V (RHS)" was "24V (V_CUST)" & "GND" respectively.	ROTORK CONTROLS LTD BATH, BA1 3JQ ENGLAND Tel:01225-733200	ROTORK CONTROLS INC ROCHESTER NY 14624, USA Tel:585-247-2304	B1 C1 B2 C2			



SLOT B



RHS CABLE IS CUSTOMER SUPPLIED, FOR SPECIFICATION SEE PUB002-059, MAXIMUM LENGTH OF CABLE TO BBE 100m.

NOTES

1.FUSES:

- PS1 is a self-resetting fuse.
- Refer to publication PUB002-039 for approved fuses FS1 and FS2.

2.REMOTE CONTROL:

- For typical remote control circuits refer to:
 - RWS indicated or PUB002-041.
- For DC and AC control, connect -ve/0V to terminal 36.
- (For negative switch / positive common, refer to RWS indicated).
- Control signal threshold voltages:
 - DC: "on" $\geq 16Vdc$ / "off" $\leq 8Vdc$, max 60Vdc.
 - AC: "on" $\geq 60Vac$ / "off" $\leq 40Vac$, max 120Vac.
- Control signal duration to be 300ms minimum.
- Maximum current drawn from remote control signals is:
 - 8mA at 24Vdc or 12mA at 120Vac.
- Supply provided on terminals 4 & 5:
 - Intended for remote control.
 - Max external load 5W at 24Vdc / 5VA at 120Vac

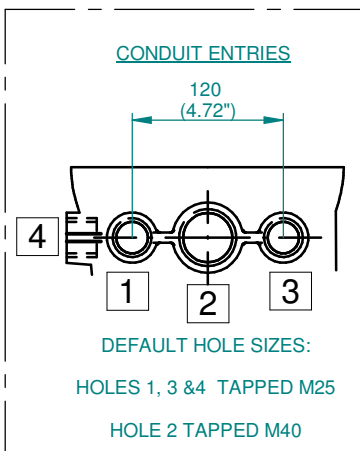
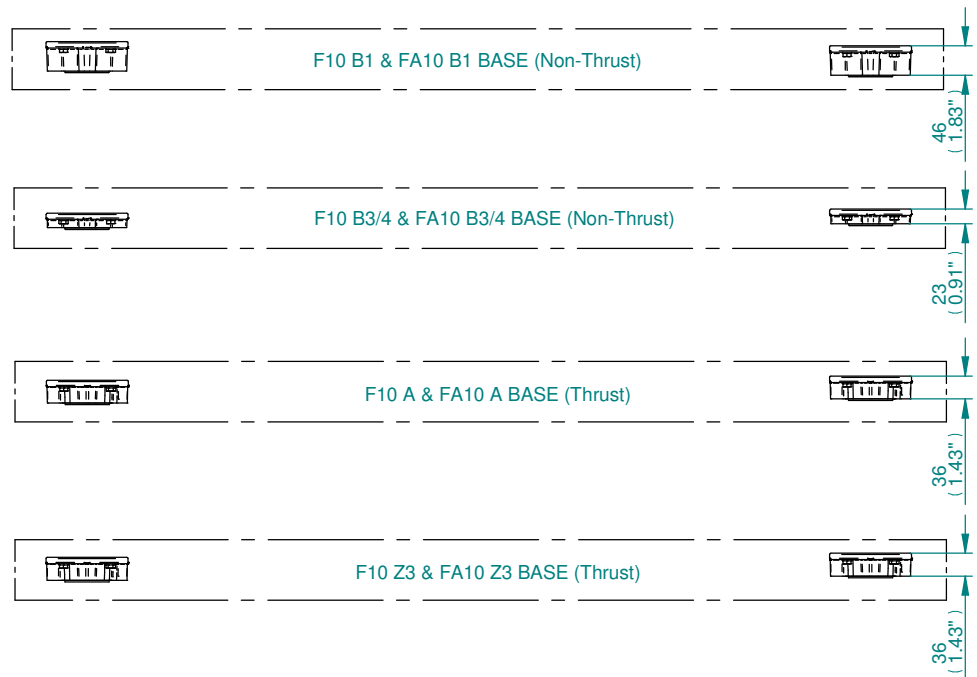
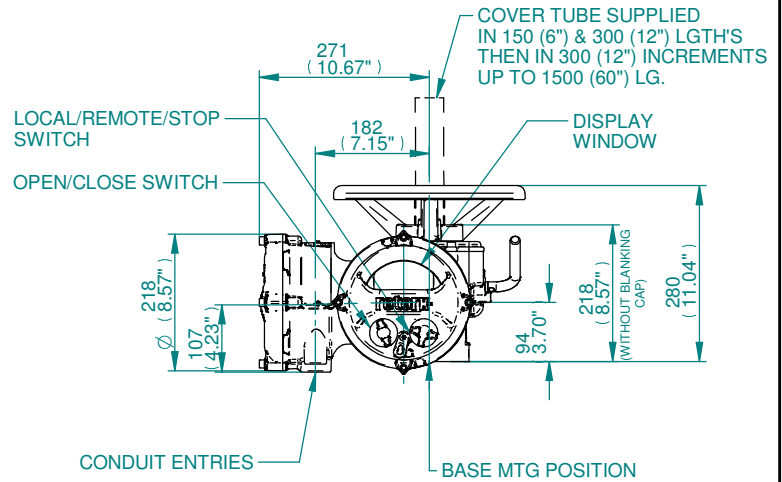
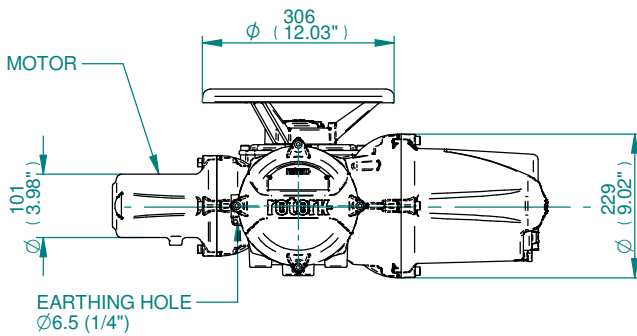
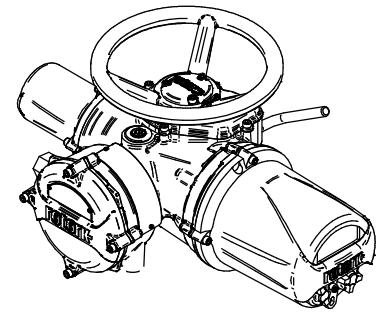
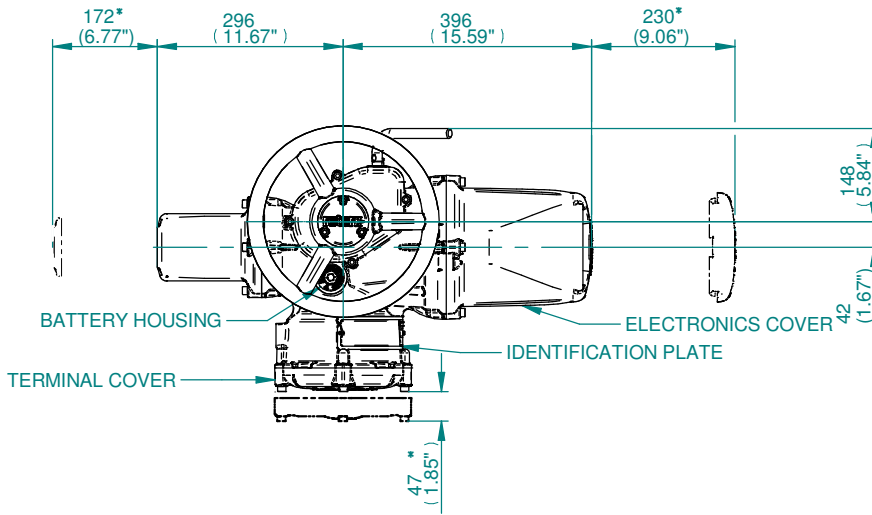
3.INDICATION:

- For typical position, status and alarm indication see PUB002-041.
- "S" contacts are user configurable and are shown in their default setting.
- Refer to PUB002-040 for functions and configuration instructions.
- Monitor Relay indicates actuator availability for remote control (shown "unavailable"). It can be configured to exclude local/remote selection.
- Refer to PUB002-040 for monitored functions and configuration instructions.
- Voltage applied to indication contacts must not exceed 150Vac
- Individual Switch current must not exceed 3.5A inductive, 5A resistive and no more than 8A in total for all 4 contacts.

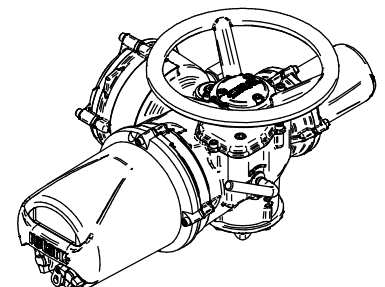
4.BATTERY:

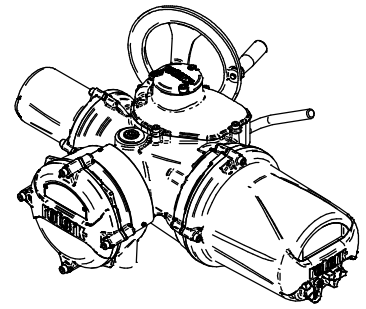
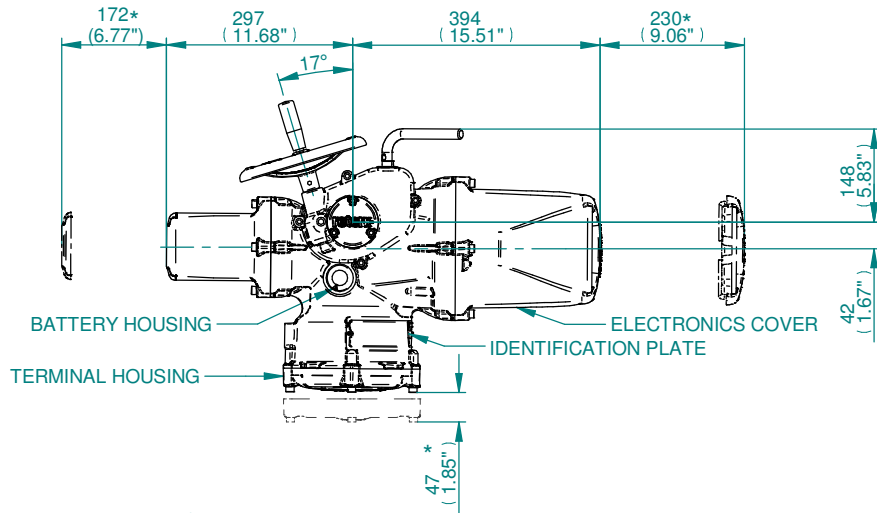
- Battery maintains local and remote "S" contact indication only.
- Refer to installation manual for approved replacement battery types.

Actuator Terminal Bung No.	RHS Terminal Block No.	Function
20	1	+24V (RHS)
21	2	0V (RHS)
32	3	CAN H
40	4	CAN L
47	5	SHEILD

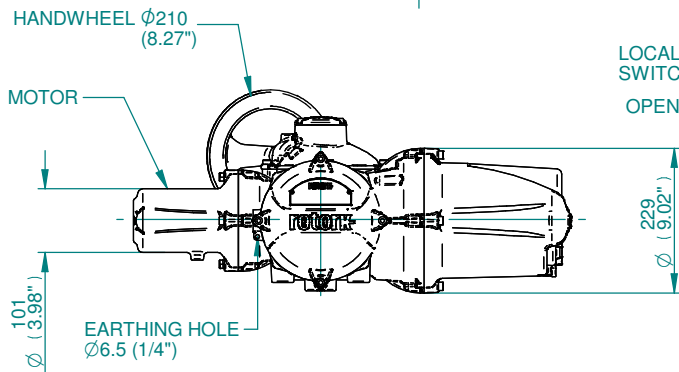


- NOTES**
- FOUR BASE OPTIONS ARE DETAILED TO SUIT THE RELEVANT COUPLING ARRANGEMENT.
 - THE REQUIRED BASE FOR THE SIDE & END VIEWS SHOULD BE LOADED TO MTG POSITION INDICATED.
 - ** REMOVAL ALLOWANCE REQUIRED.

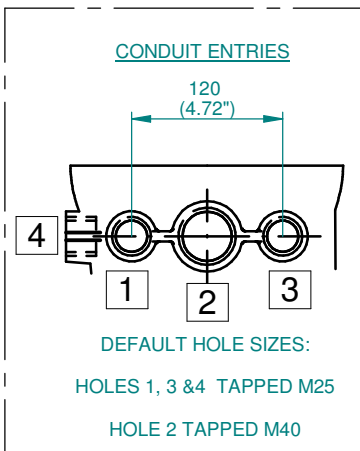
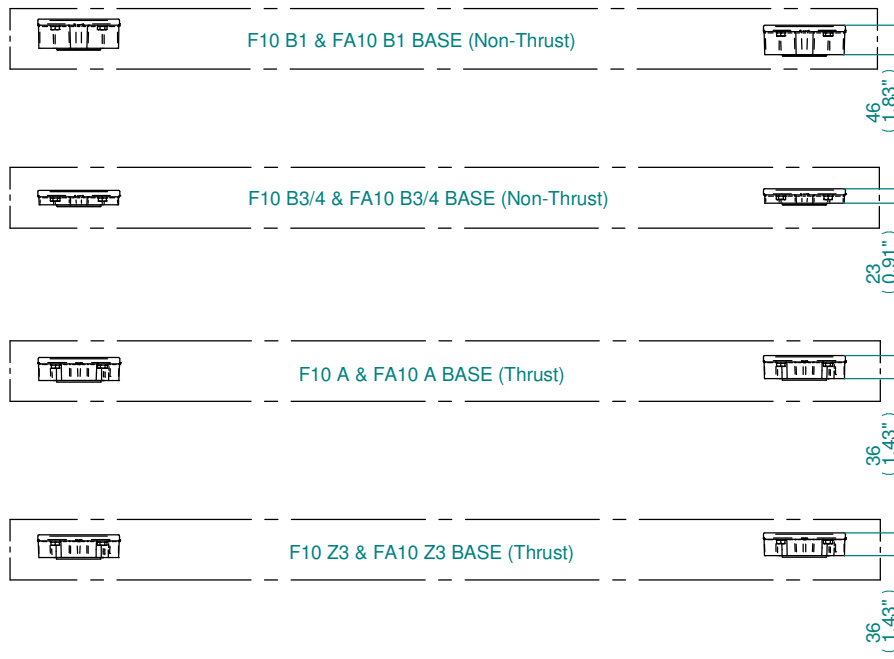
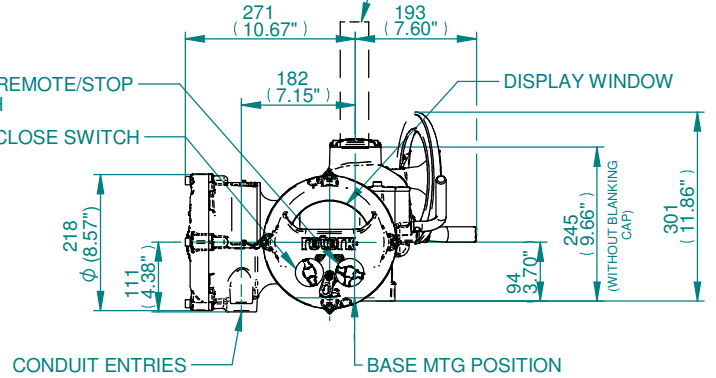




COVER TUBE SUPPLIED IN 150 (6") & 300 (12") LGTH'S THEN IN 300 (12") INCREMENTS UP TO 1500 (60") LG.

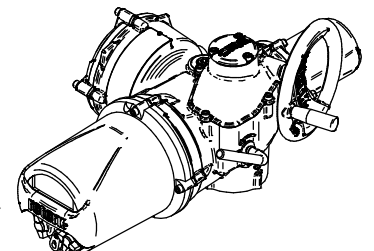


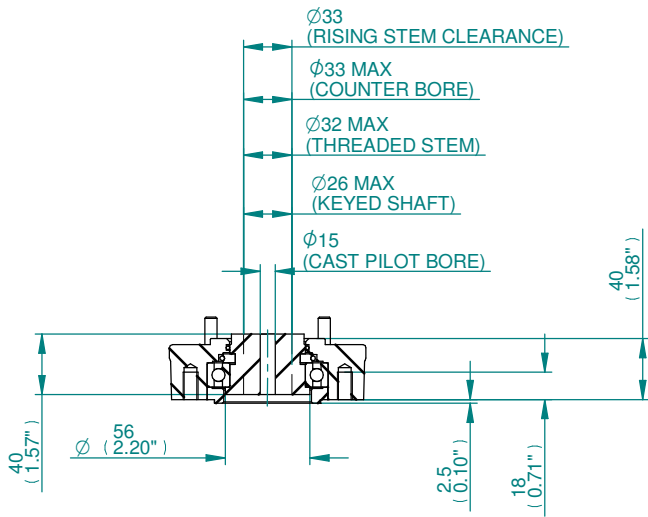
LOCAL/REMOTE/STOP SWITCH
OPEN/CLOSE SWITCH



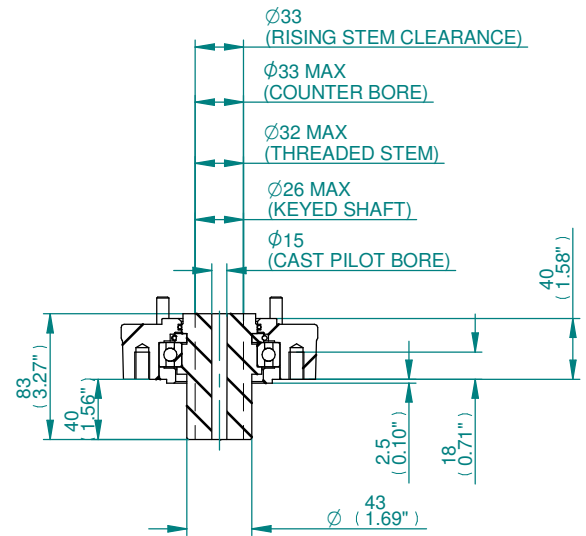
NOTES

- FOUR BASE OPTIONS ARE DETAILED TO SUIT THE RELEVANT COUPLING ARRANGEMENT.
- THE REQUIRED BASE FOR THE SIDE & END VIEWS SHOULD BE LOADED TO MTG POSITION INDICATED.
- ** REMOVAL ALLOWANCE REQUIRED.



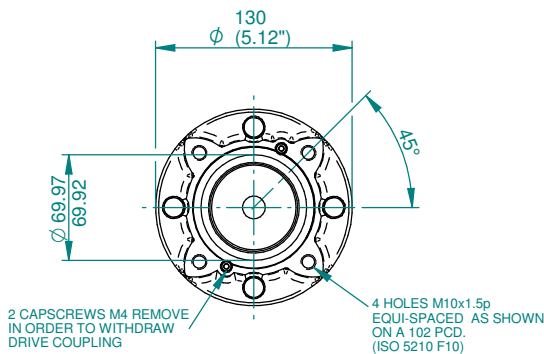


TYPE 'A' COUPLING DETAILS

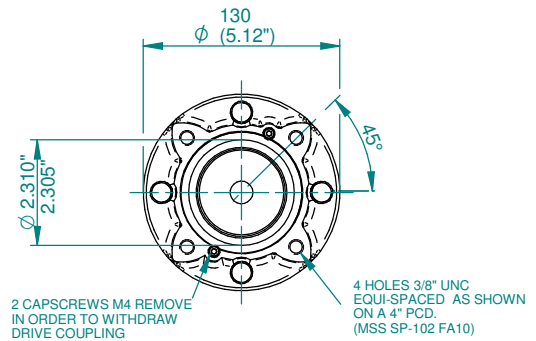


TYPE 'Z3' COUPLING DETAILS

NOTE : COUPLINGS WITHOUT PILOT BORE AVAILABLE IF SPECIFIED WITH ORDER.

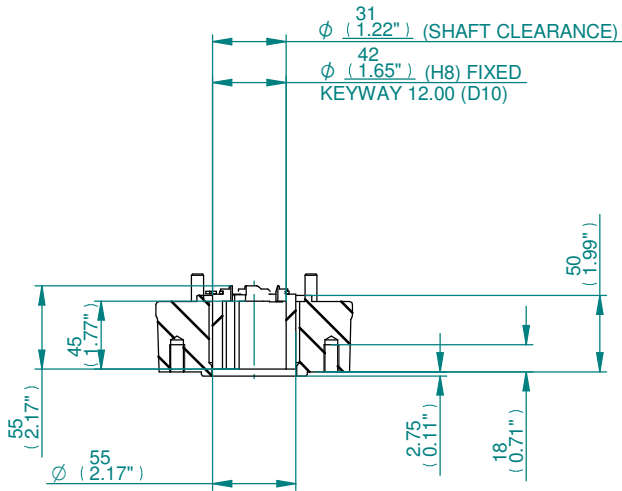


F10 BASE DETAILS FOR 'A' & 'Z3' COUPLINGS

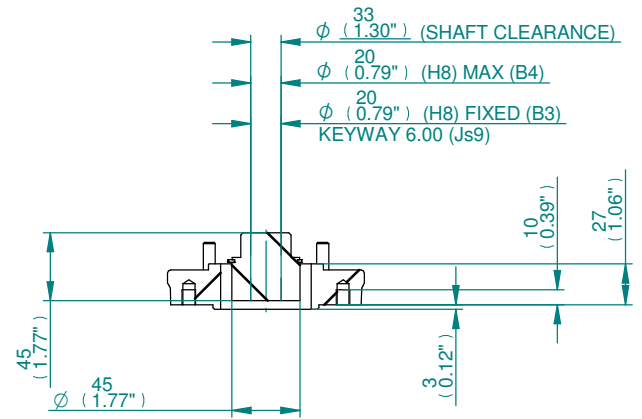


FA10 BASE DETAILS FOR 'A' & 'Z3' COUPLINGS

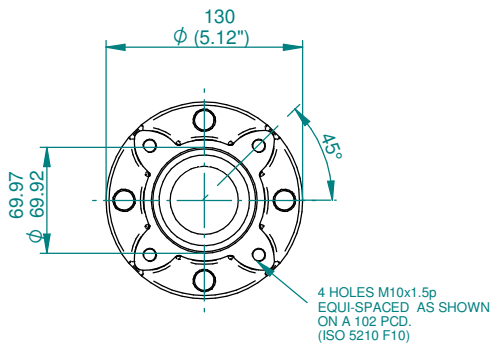
IQ3 SIZE 10-18 THRUST BASES



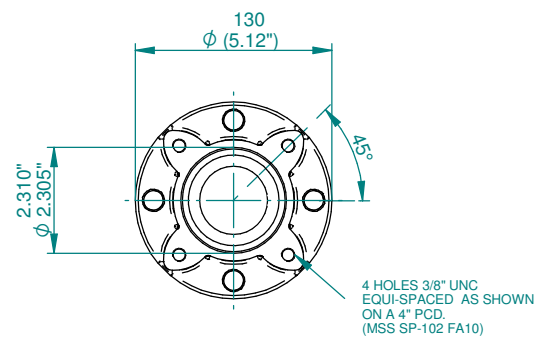
**TYPE 'B1'
 COUPLING DETAILS**



**TYPE 'B3/B4'
 COUPLING DETAILS**



**F10 BASE DETAILS
 FOR 'B1' & 'B3/B4' COUPLINGS**



**FA10 BASE DETAILS
 FOR 'B1' & 'B3/B4' COUPLINGS**

**IQ3 SIZE 10-18
 NON-THRUST BASES**

Electric Actuator Datasheet



Your Reference: Centork 400 actuator fault
 Our Reference: CNO009844-00-2
 Site Reference:
 Date of Quotation: 20.10.2021

Item	Units	
Line Number		1
Tag Number		
Quantity	Each	2
Valve Requirements		
Type		Gate
Size		
Class		150
Torque	Nm	65,00
Modulating Torque	Nm	
Thrust	kN	
Modulating Thrust	kN	
Coupling Type		Standard
Coupling Dimension	mm	
Turns		
Stroke	mm	
Operating Time	secs	
Max. Handwheel Rim Pull	N	700,00
Equipment Offered		
Actuator		IQ3 12 F10 A WT Single Phase
Actuator Speed	rpm	21
Secondary Gearbox		
Gearbox Ratio		
Output Flange		F10
Coupling Type		Thrust Base - Key
Coupling Dimension	mm	26,00
Maximum NRS Diameter	mm	26,00
Maximum RS Diameter	mm	
Actuator Weight	kg	30,87
Gearbox Weight	kg	
Combination Weight	kg	30,87
Handwheel Type		THW
Handwheel Ratio		1,00
Handwheel Turns		
Rim Pull	N	433,55
Actuator Performance		
Torque	Nm	65,00
Modulating Torque	Nm	
Thrust	kN	44,48
Modulating Thrust	kN	
Resultant Thrust	kN	
Output Speed	rpm	21,00
Linear Speed	mm/sec	
Operating Time	secs	
Requested Safety Factors		
Torque		1,00
Modulating Torque		1,00
Thrust		1,00
Modulating Thrust		1,00
Calculated Safety Factors		
Torque		1,00
Modulating Torque		
Thrust		
Modulating Thrust		
Electrical Data		
Voltage	V	230
Phase	∅	1
Frequency	Hz	60 Hz
Starting current	A	7,40
Starting power factor		0,97
Rated load current	A	3,40
Current at average load	A	1,60
Power factor at average load		0,92
Motor power at average load	kW	0,34
Number of poles of motor		

