

Bunn skade

Jobbdetaljer

Start Dato	20.11.2022	Utføres av	Verksted	<input checked="" type="checkbox"/> Kritisk jobb
Varighet	15 Dag(er)	Valgte leverandør		<input checked="" type="checkbox"/> Klasse jobb
Fremdrift	0%	Ekstern Jobb Nr.		
		Jobbansvarlig	Maskinsjef	
		Kontrolleres av	Reders representant, Representant fra klasse	

Lokasjon

Denne jobben gjelder følgende komponenter/utstyr:

271.001 Skrog under vannlinjen

Følgende tjenester skal inkluderes som en del av arbeidsomfanget og omfattes av oppgitt pris for arbeidet:

Gassfri sertifikat, Rengjøring før, Trykktesting, Ventilasjon, Ultrasonic testing, Rengjøring etter, Maling, Tilkomst, korrosjonsbeskyttelse, Brannvakt.

Nødvendig materiale for utførelse av arbeidet skal leveres av Verkstedet.

Jobbeskrivelse

Bunnskade i sonarrom spant 80-82 SB side.

Inntrykket plate i sonarrom og hollandsk profil er deformert, se vedlagt blide.

Sonart løftes opp og dekkes til på en slik måte at den ikke blir skadet under arbeidet.

Det kan se ut som om sonarrør i bunn er blitt deformert og må kuttes ut og sveises inn på nytt slik at den står rett eventuelt rettes opp igjen.

Denne jobbe blir tatt avgjørelse på ifølge hva DNV sier etter bunn besiktelse.

Det må lages til ventilasjon ut før arbeid starter i sonarrom. Sluseventil blir tatt i land for inspeksjon, se

Verkstedspesifikasjon nr. 5 Bunnventiler.

Det er et memo fra DNV på denne og må bli sjekket fra undersiden før arbeidet starter.

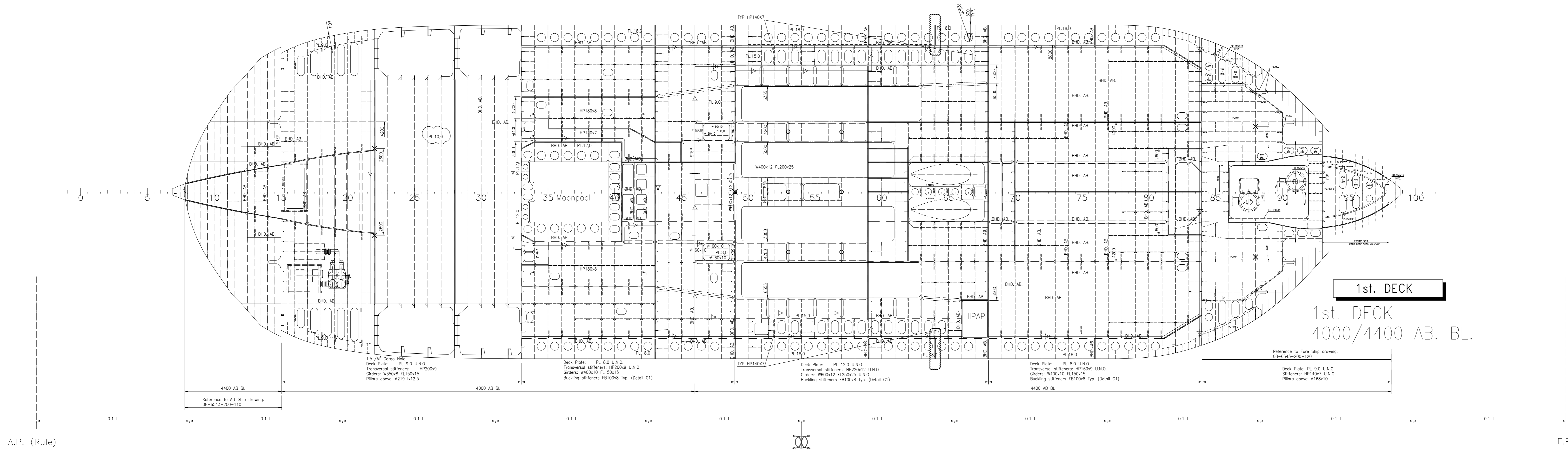
Dette er i et område hvor det står puter som må ta hensyn til på puteoppsett før dokking, jfr. velagte dokkingplan.

Dersom det er nødvendig med utkapp i plate skal den sprekktestes/røntgentestes. Det ligger drivstofftanker i akterkant på sonarrom. Dette gjelder tank 130 S og 131 S og disse må rengjøres. Det må gassmåles før og under arbeidet med bunnskaden.

Vedlagt følger Profil & Plan-tegning, Hudutfolding, sonarrom, dokkingplan og bilder av skaden.

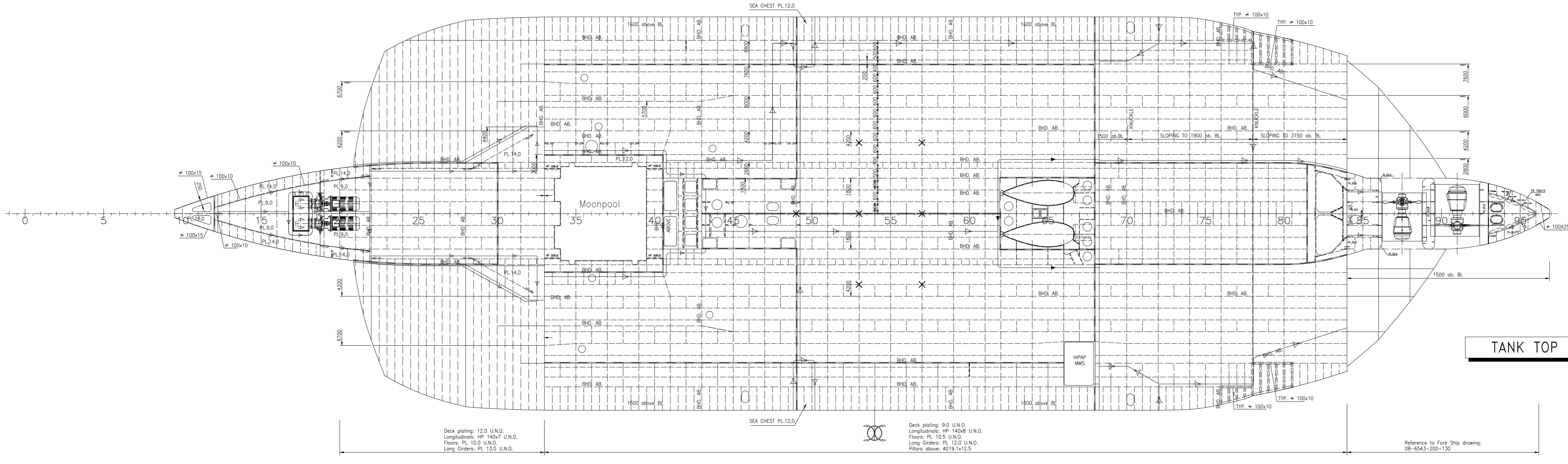
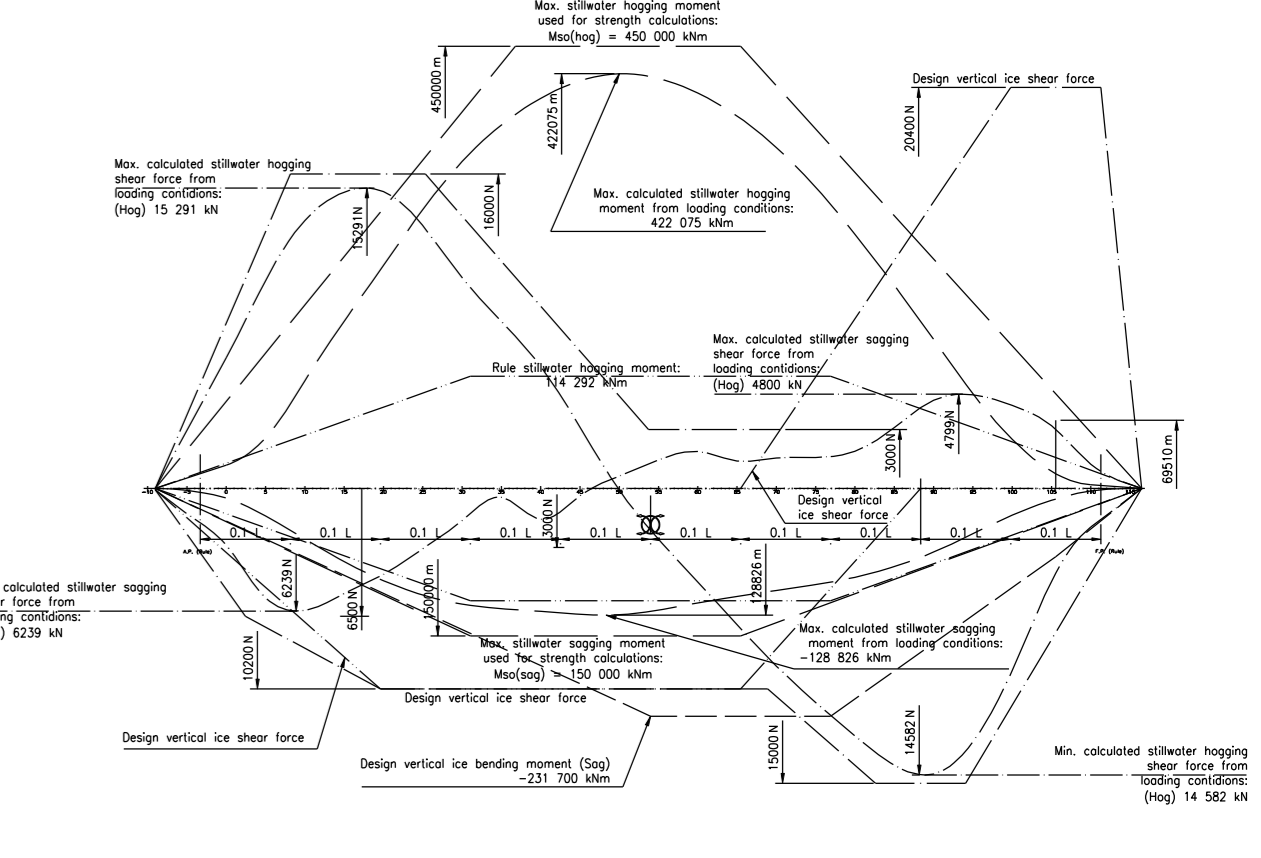
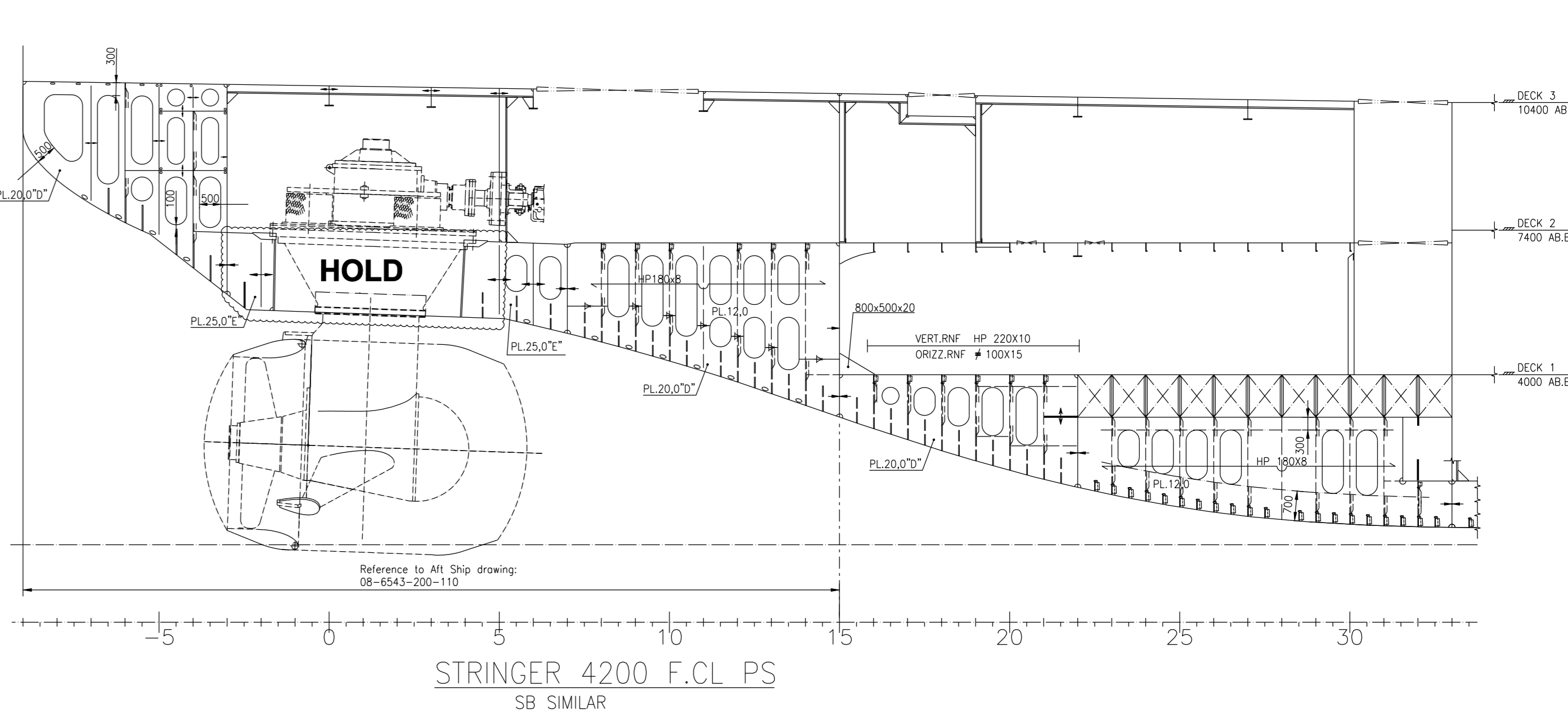
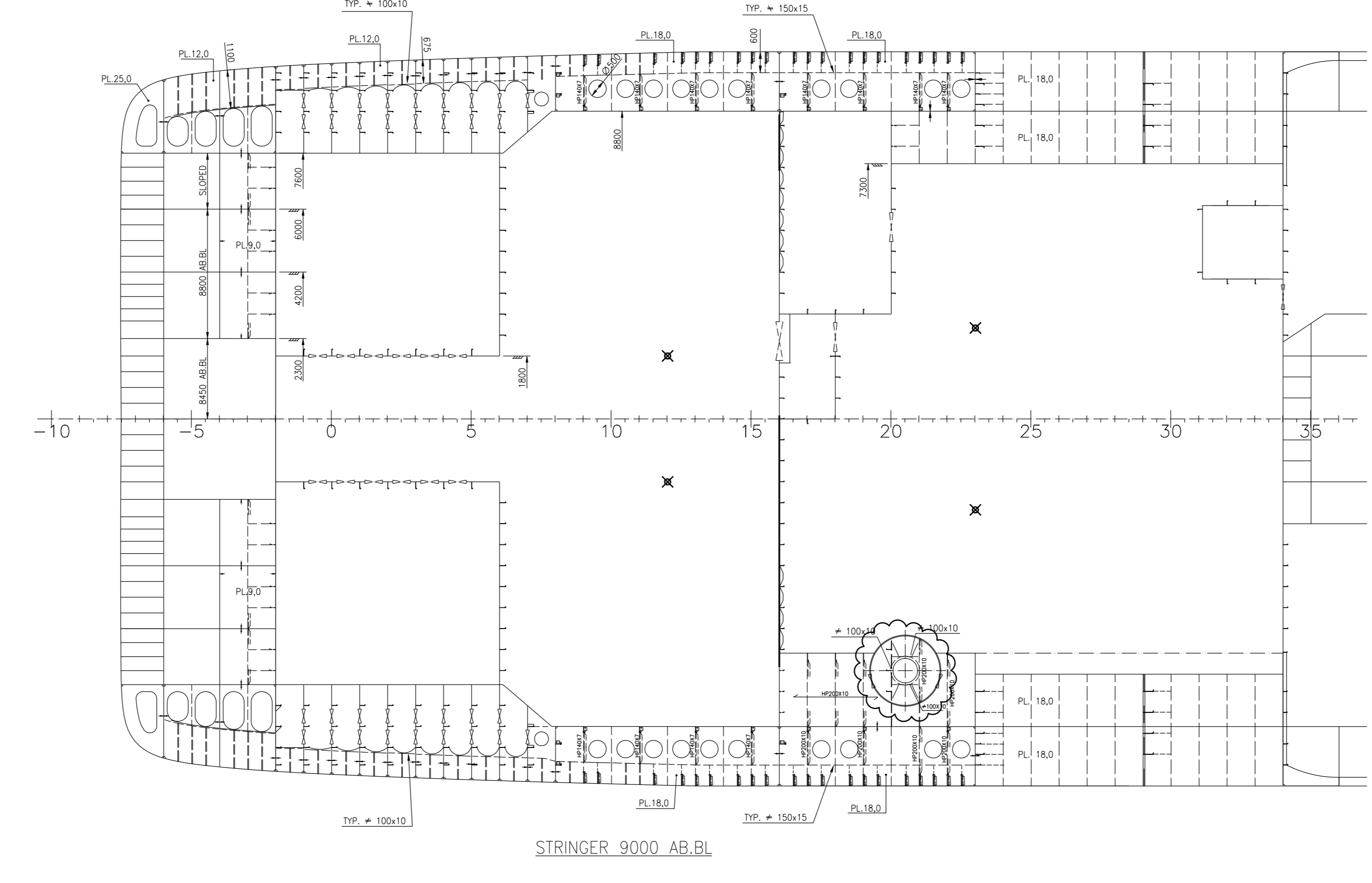
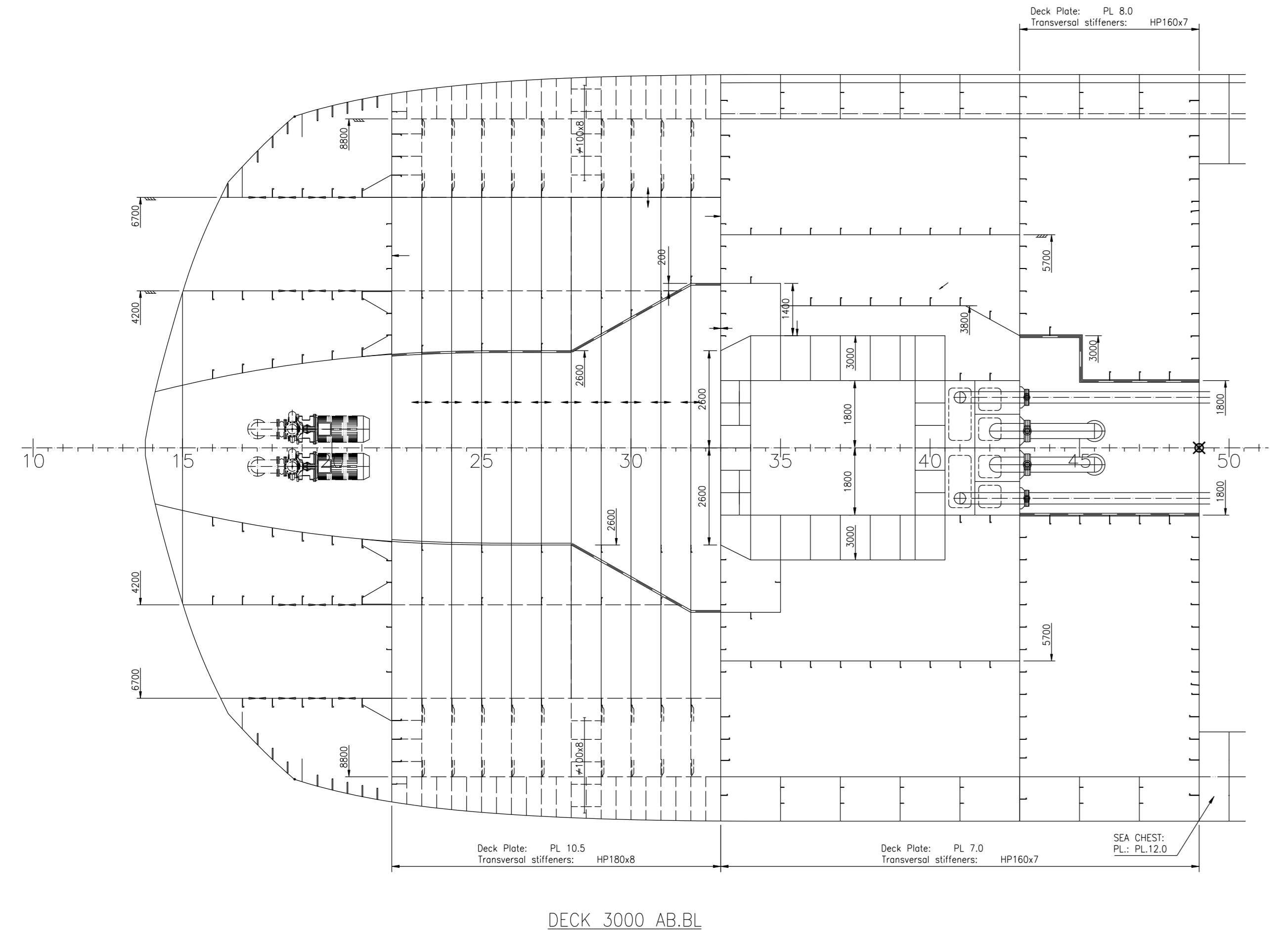
Vedlegg

Filnavn	Filbeskrivelse	Filstørrelse (kb)
200-001 Profile and Plan Sheet 1 - 4.pdf	200-001 Profile and Plan Sheet 1 - 4	3931 kb
SAM_6063.JPG	SAM_6063	273 kb
SAM_6064,.JPG	SAM_6064	274 kb
bunn skade.docx	bunn skade	2876 kb
200-005 Shell Expansion & Framing Plan.pdf	200-005 Shell Expansion & Framing Plan	1233 kb
106-2017-001 Sonar Room.pdf	106-2017-001 Sonar Room	650 kb
102-030-Rev.2-Docking_Plan_v1.pdf	102-030-Rev.2-Docking_Plan_v1	1046 kb



A.P. (Rule)

F.P. (Rule)



NOTE:
 ○ PILLAR ABOVE
 × PILLAR BELOW
 ⊗ PILLAR BELOW AND ABOVE

Main Particulars

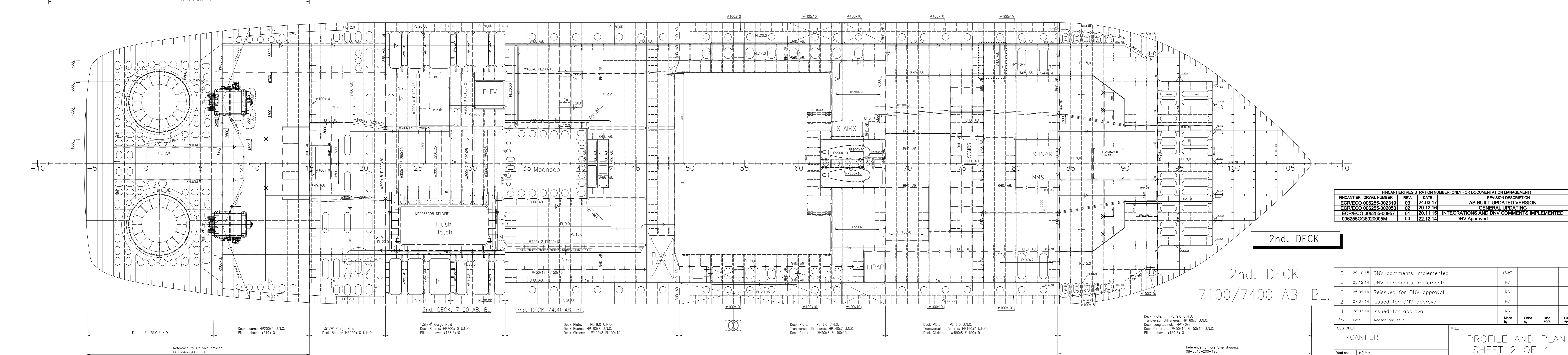
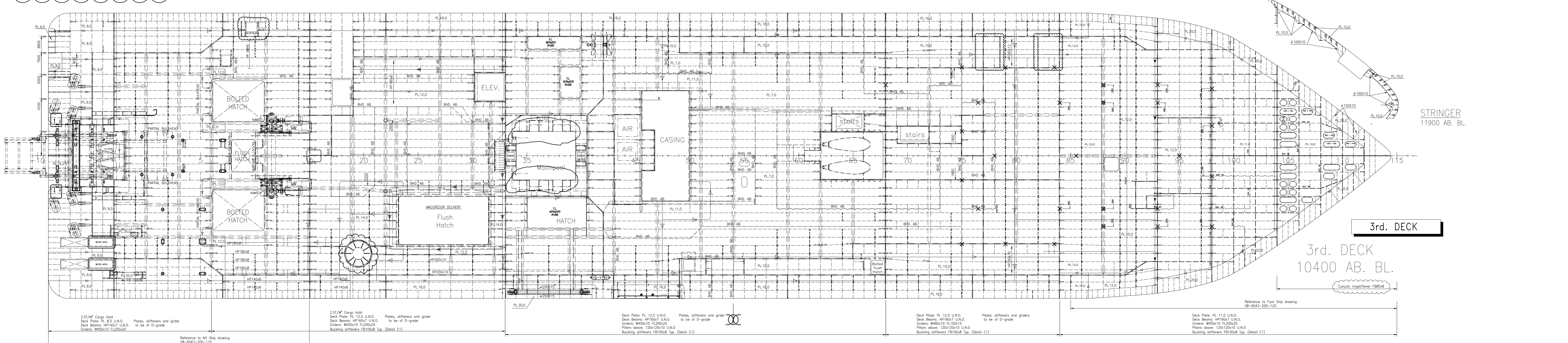
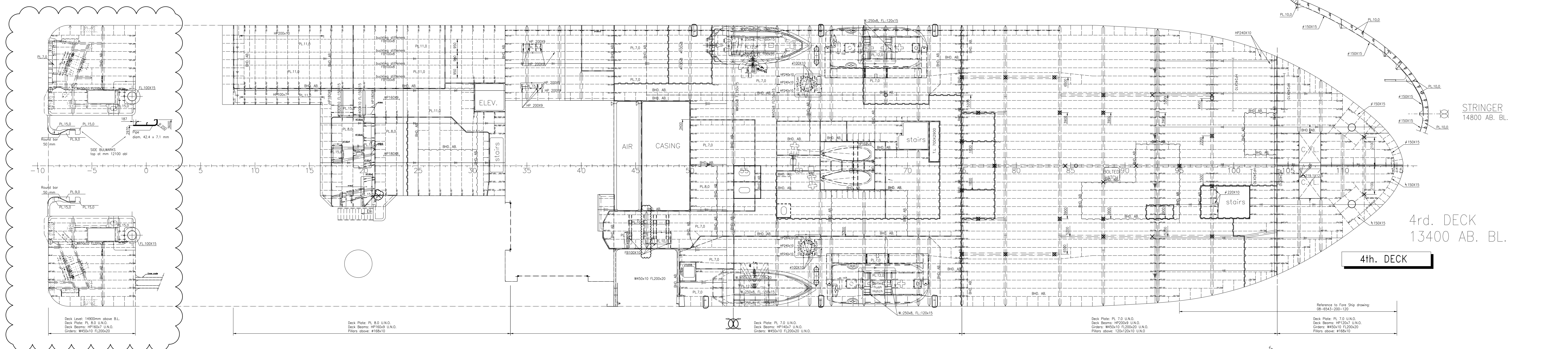
Length O.A.	Approx.: 100,40 M
Length between PP.	Approx.: 84,80 M
Length (Rule)	Approx.: 91,64 M
Breadth Moulded	: 21,00 M
Depth Deck 3	: 10,40 M
Design Draught	Approx.: 7,60 M
Scantling Draught	Approx.: 8,65 M

Accommodation for 55 Persons in 21 Single Cabins, 17 Double Cabins.

CLASS:
 DNV + 1A1, E0, RP, NAUT-OSV(A), CLEAN DESIGN, PC3 Icebreaker, DAT(-35), WINTERIZED BASIC, HELDK-SHF, DYNPOS-AUTS, COMF-V(3)/C(2), DK(+)

Rev.	Date	Reason for issue	Made by	Checked by	Disc. by	Client rep.
5	20.11.15	Integrations and DNV comments implemented				
4	05.12.14	DNV comments implemented				
3	02.12.14	Reissued for DNV approval				
2	07.07.14	Issued for DNV approval				
1	28.03.14	Issued for approval				

CUSTOMER: FINCIANTIERI
 TITLE: PROFILE AND PLAN SHEET 1 OF 4

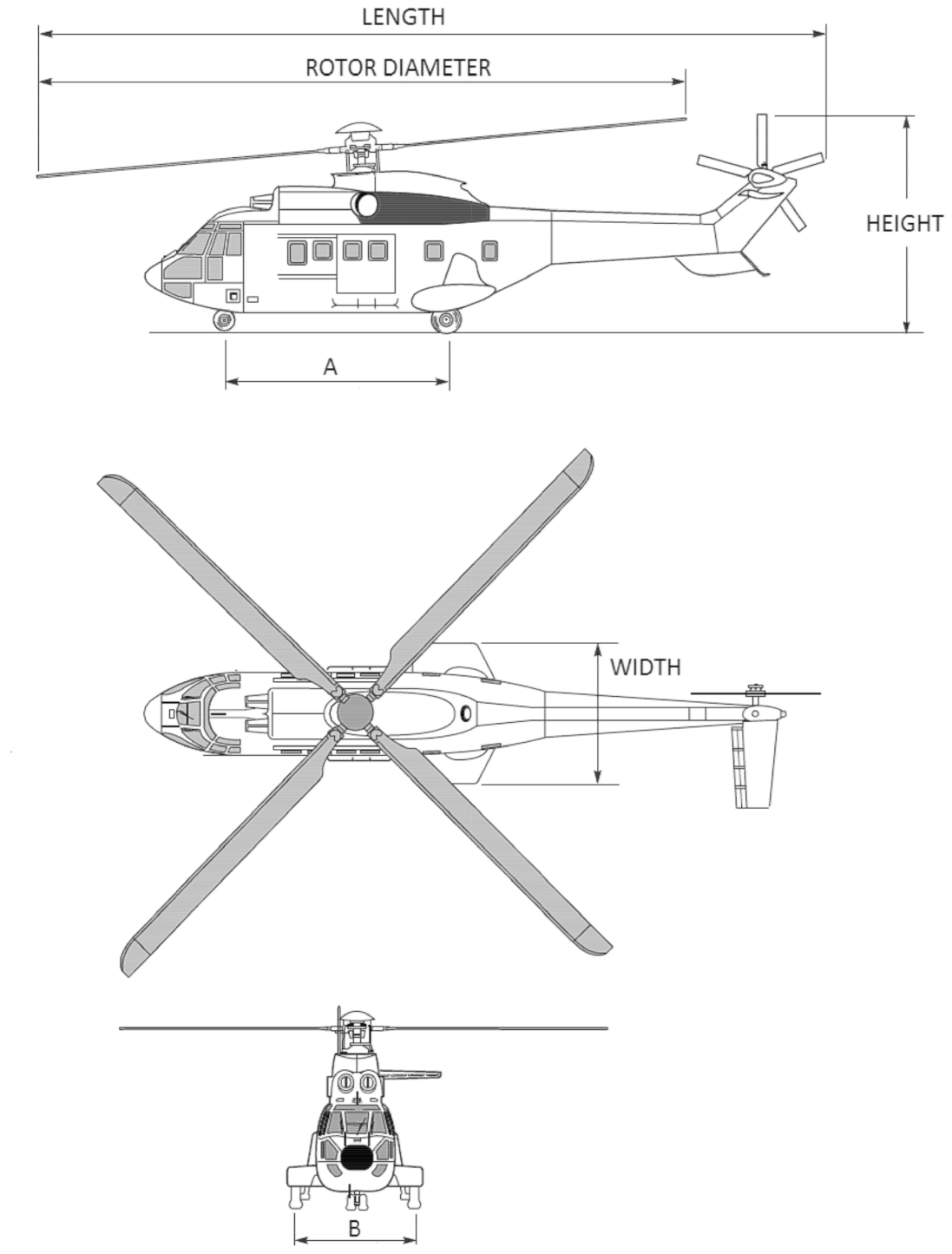


FINCANTIERI REGISTRATION NUMBER ONLY FOR DOCUMENTATION MANAGEMENT			
FINCANTIERI DRWG. NUMBER	REV.	DATE	REVISION DESCRIPTION
ECRECO 08265-002119	03	24.03.17	AS-BUILT UPDATED VERSION
ECRECO 08265-002119	02	28.12.16	GENERAL UPDATING
ECRECO 08265-00957	01	20.11.16	INTEGRATIONS AND DNV COMMENTS IMPLEMENTED
08265GG02005M	00	22.12.14	DNV Approved

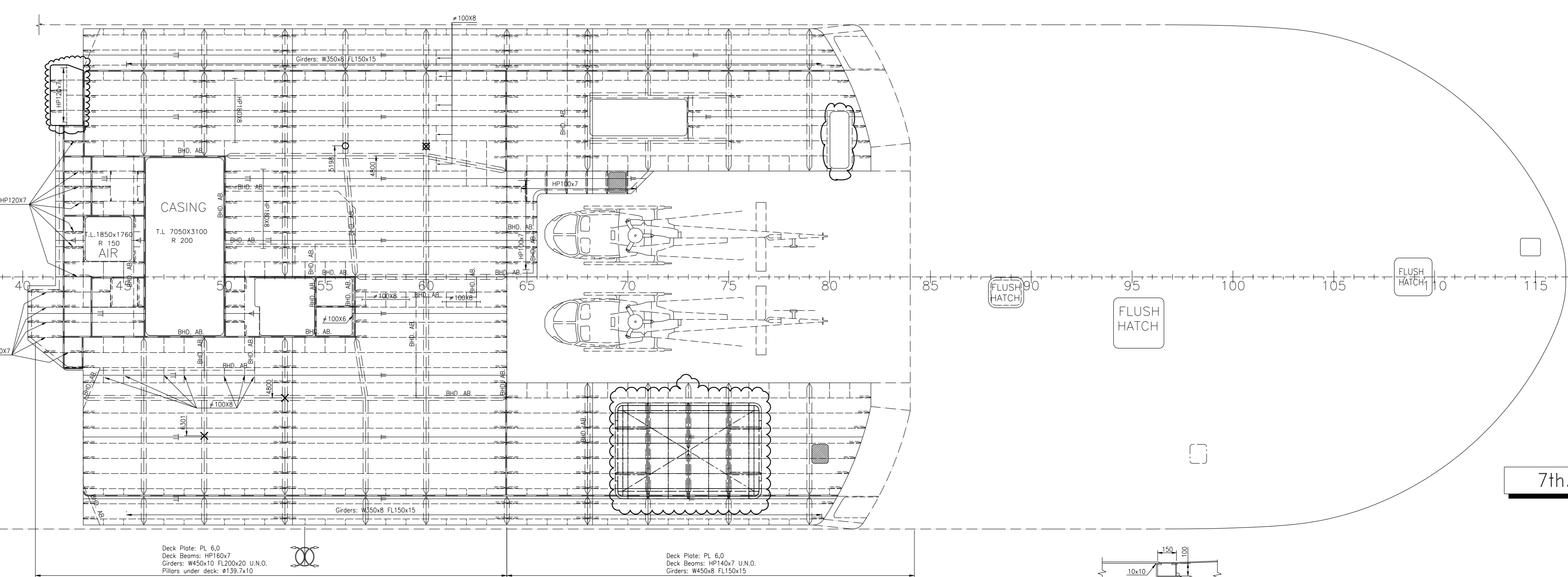
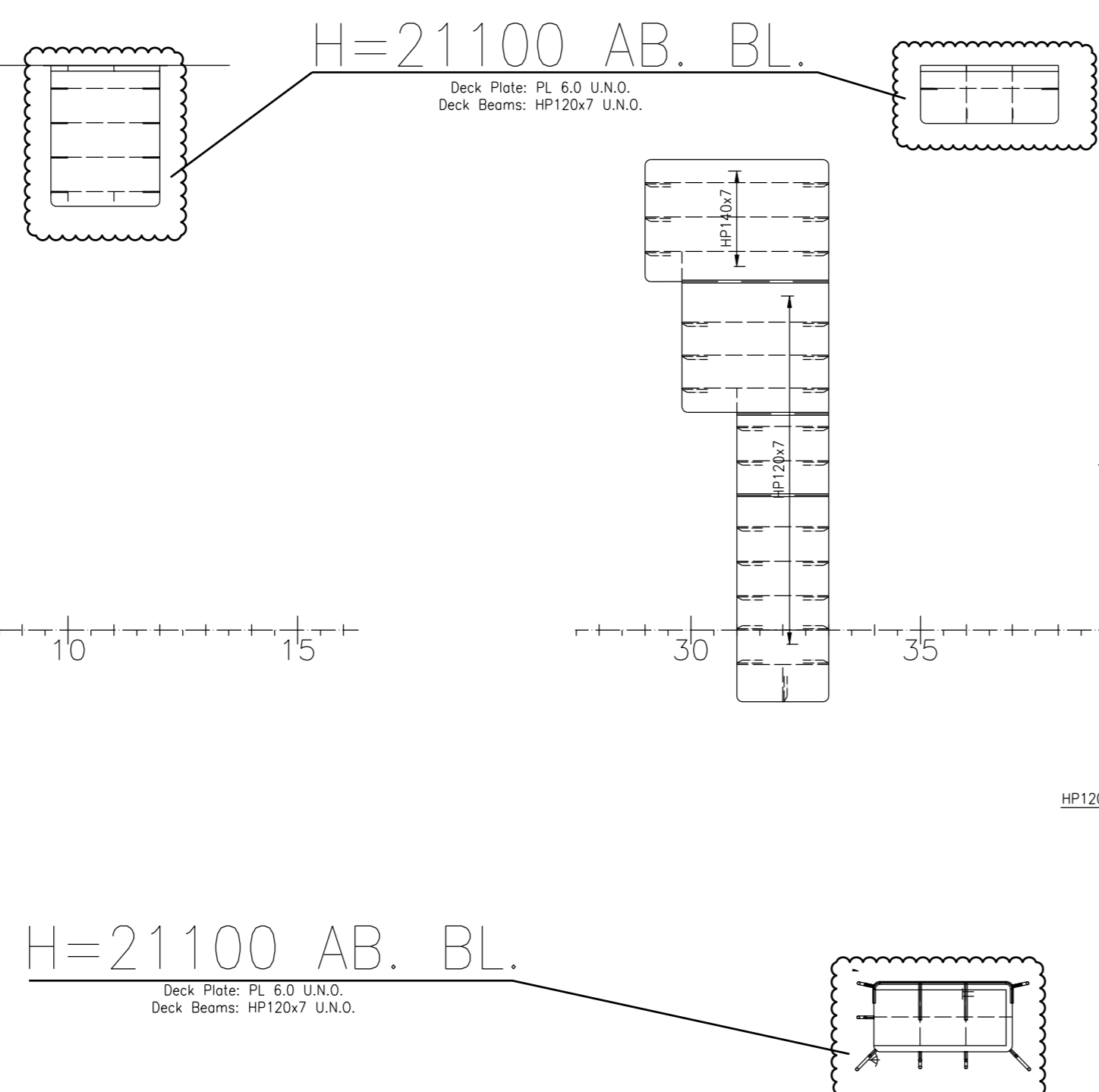
Rev.	Date	Reason for issue	Made by	Check by	Disc. by	Client rep.
5	29.10.15	DNV comments implemented				YS&F
4	05.12.14	DNV comments implemented				RG
3	25.09.14	Reissued for DNV approval				RG
2	07.07.14	Issued for DNV approval				RG
1	28.03.14	Issued for approval				RG

CUSTOMER	FINCANTIERI	TITLE	PROFILE AND PLAN SHEET 2 OF 4
Yard no.	6255	Scale	1:100
Format	A0	Version	5.0

Rolls-Royce Ship Technology Office System
UT-Design Ship Technology Office System
 DOCUMENT NO: 08-6543-00-200-001-02
 Scale: 1:100 Format: A0 Version: 5.0

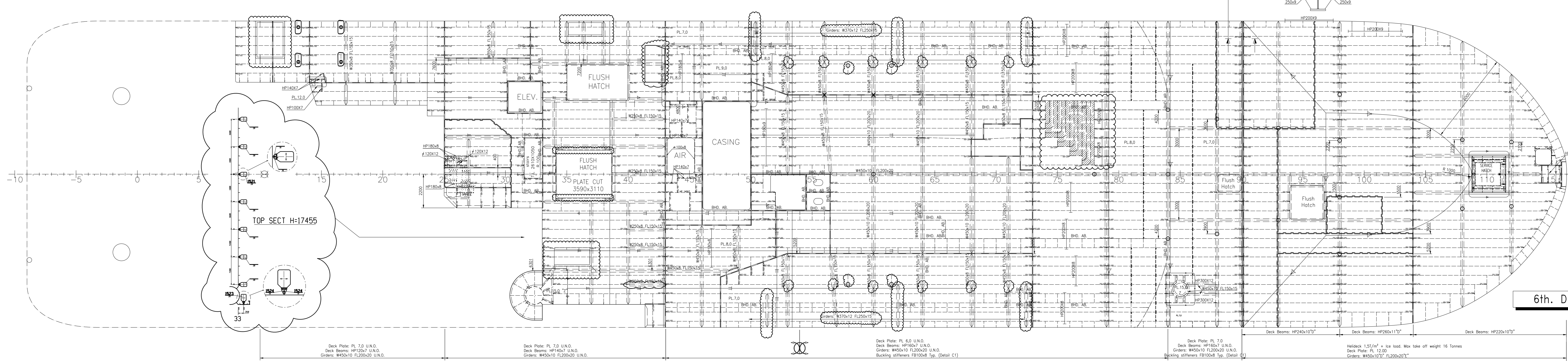


helicopter type	Max take-off weight [kg]	Load on front wheel [kN]	Load on aft landing gear [kN]	rotor diameter [m]	length [m]	height [m]	width [m]	A [m]	B [m]
AW 101	15600	48	105	18.60	22.85	6.65	4.50	7.00	4.50
NH 90	10600	29	75	16.30	19.56	5.22	3.63	6.14	3.20
AS 332	11200	43	67	15.60	18.70	4.92	3.38	5.25	3.00



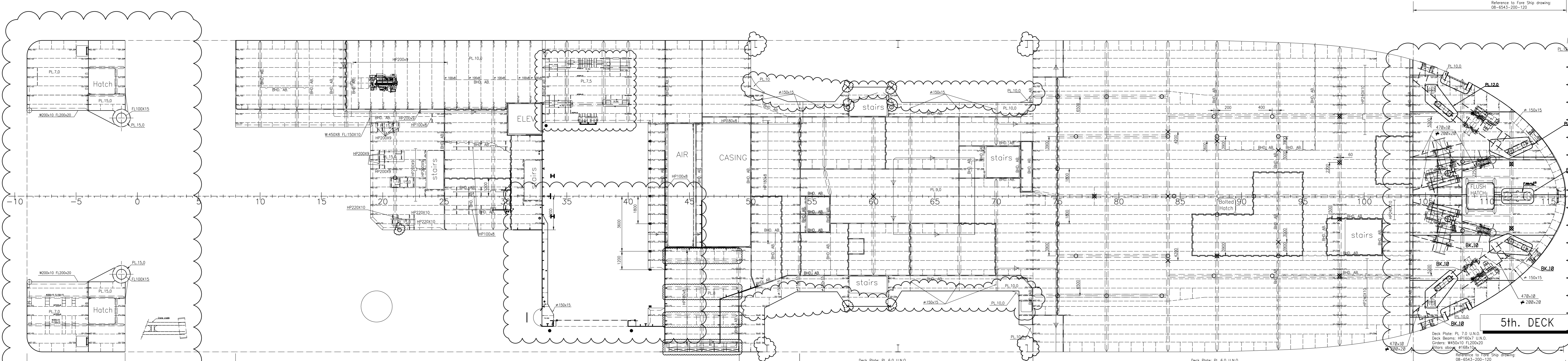
7th. DECK
21700 AB. BL.

7th. DECK



6th. DECK
19000 AB. BL.

6th. DECK



5th. DECK
16200 AB. BL.

5th. DECK

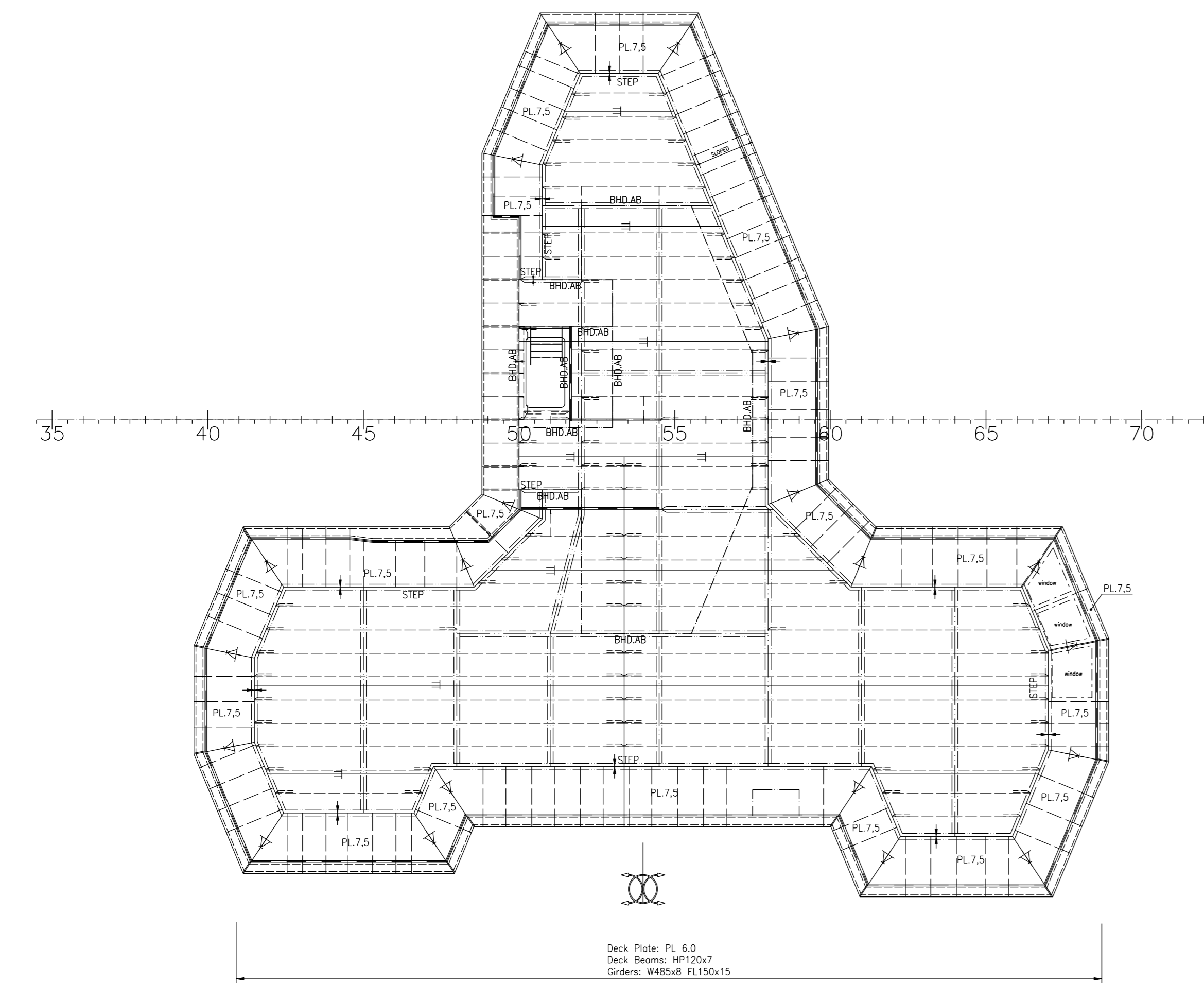
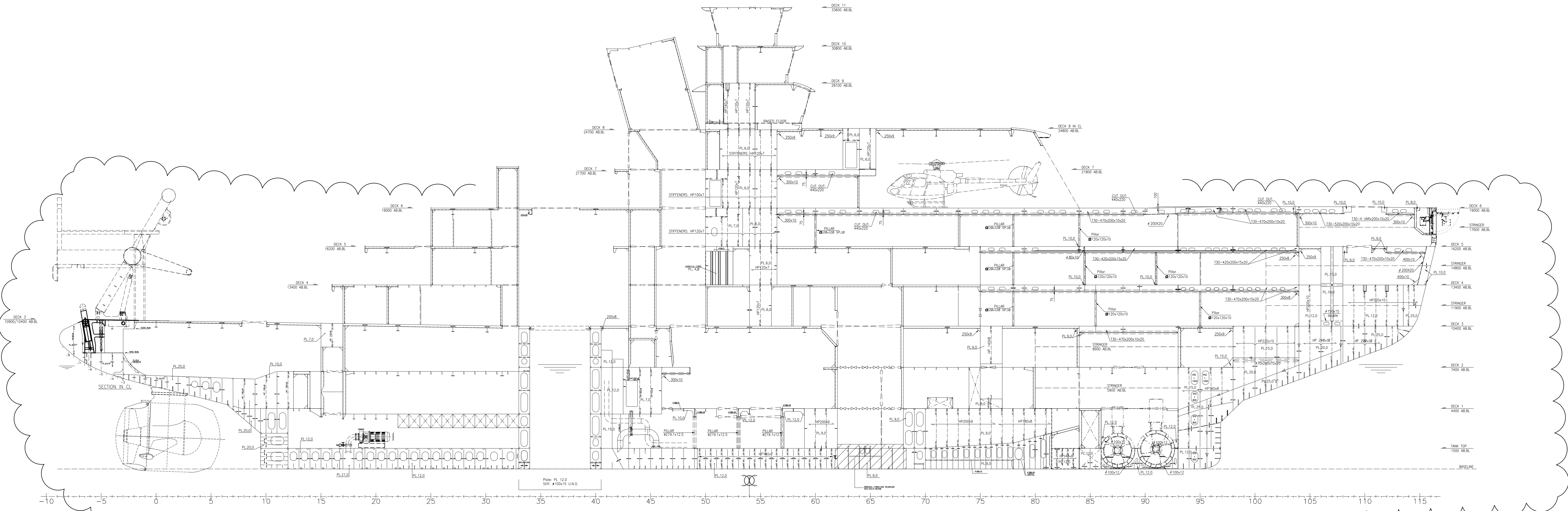


Rev.	Date	Reason for issue	By	Checked by	Disc. by	Client rep.
5	29.10.15	DNV comments implemented				YS&F
4	05.12.14	DNV comments implemented				RG
3	25.09.14	Reissued for DNV approval				RG
2	07.07.14	Issued for DNV approval				RG
1	28.03.14	Issued for approval				RG

CUSTOMER: FINCANTIERI
Yard no.: 6255
TITLE: PROFILE AND PLAN SHEET 3 OF 4

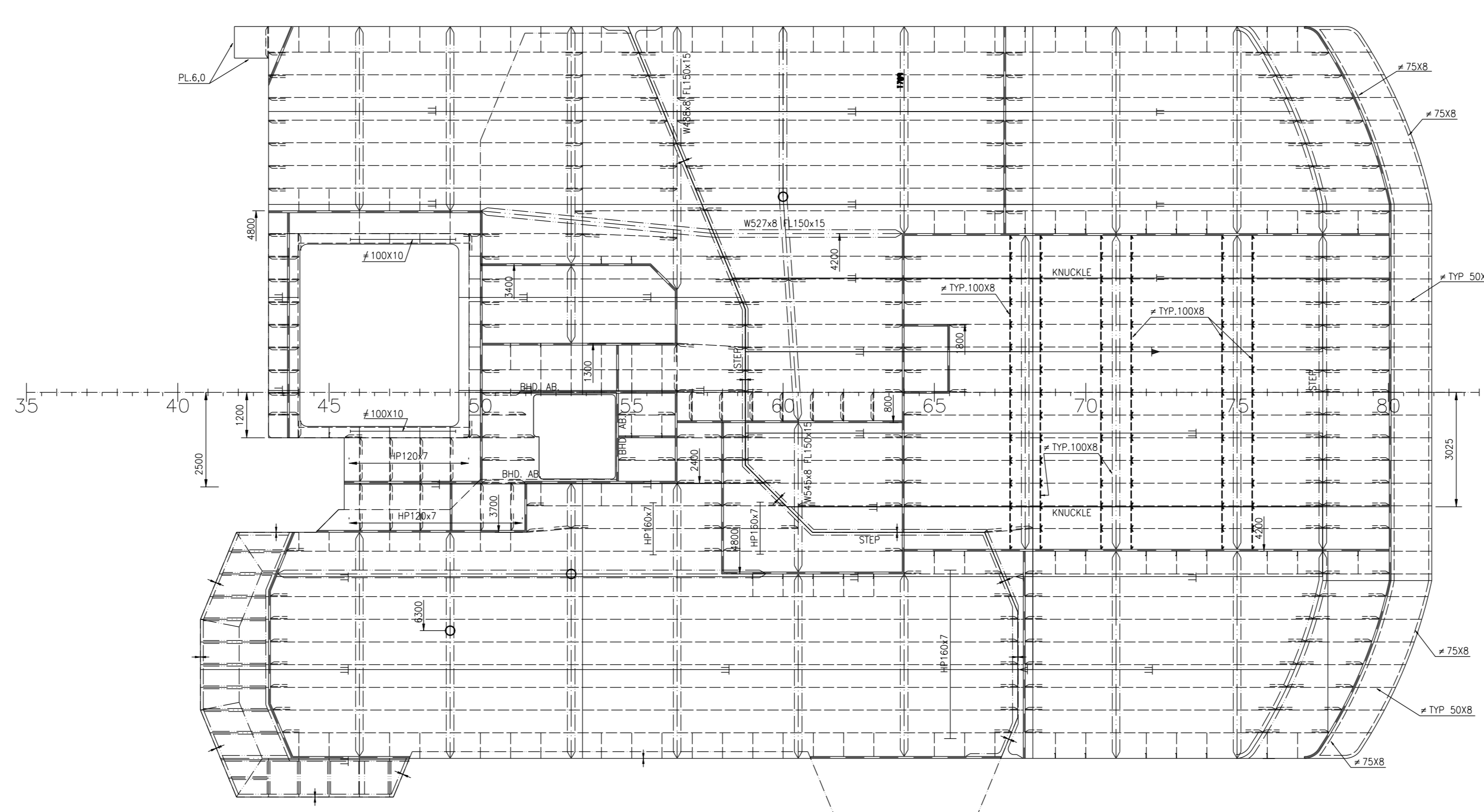
Rolls-Royce Ship Technology Offshore Systems
Rolls-Royce Marine AS
UT-Design
DOCUMENT NO: 08-6543-00-200-001-03
Scale: 1:100
Format: A0
Version: 5.0

FINCANTIERI DRAW NUMBER	REV.	DATE	REVISION DESCRIPTION
ECRECO 006245-002410	03	24.03.17	AS-BUILT UPDATED VERSION
ECRECO 006245-002410	02	28.11.16	GENERAL UPDATING
ECRECO 006245-002410	01	20.11.15	INTEGRATIONS AND DNV COMMENTS IMPLEMENTED
006245-002410	00	22.12.14	DNV Approved



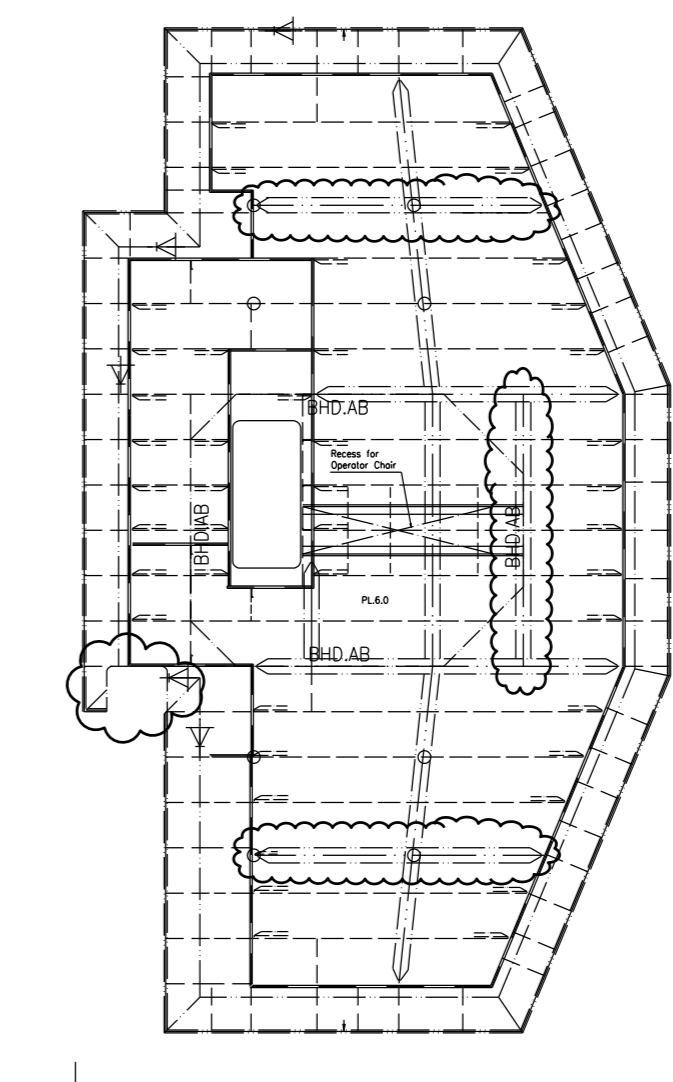
9th. DECK

Deck Plate: PL 8.0
Deck Beams: HP120x12
Orders: #48508 FL150x15



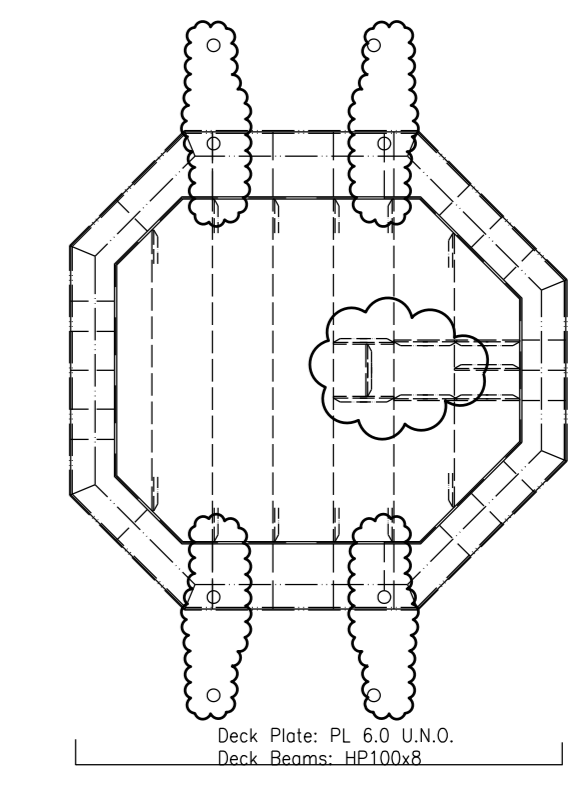
10th. DECK

Deck Plate: PL 8.0
Deck Beams: HP140x7
Orders: #45048 FL150x15
Pillars under deck: #130, 1x10
Buckling stiffeners FB100x8 Typ. (Detail C1)



11th. DECK

Deck Plate: PL 8.0
Deck Beams: HP120x7
Orders: #45048 FL200x15



Deck Plate: PL 8.0 U.S.O.
Tank Beams: HP100x8

FINCANTIERI REGISTRATION NUMBER (ONLY FOR DOCUMENTATION MANAGEMENT)				REVISION DESCRIPTION	
ECR/ECO	DRWS NUMBER	REV.	DATE	REVISION	DESCRIPTION
ECR/ECO	086256-002319	03	24.03.17	AS-BUILT	UPDATED VERSION
ECR/ECO	086256-002383	02	20.12.16	GENERAL	UPDATING
ECR/ECO	086256-005577	01	20.11.15	INTEGRATIONS	AND DNV COMMENTS IMPLEMENTED
006256GG020005M		00	22.12.14	DNV	Approved

Rev.	Date	Reason for issue	By	Check	Disc.	Client
5	29.10.15	DNV comments implemented			YS&T	
4	05.12.14	DNV comments implemented			RG	
3	25.09.14	Reissued for DNV approval			RG	
2	07.07.14	Issued for DNV approval			RG	
1	28.03.14	Issued for approval			RG	

CUSTOMER		TITLE	
FINCANTIERI		PROFILE AND PLAN SHEET 4 OF 4	
Yard no:	6255	DOCUMENT NO:	08-6543-00-200-001-04
		Scale:	1:100
		Format:	A0
		Version:	5.0





LACK
31 V

LENSING
10/0 31











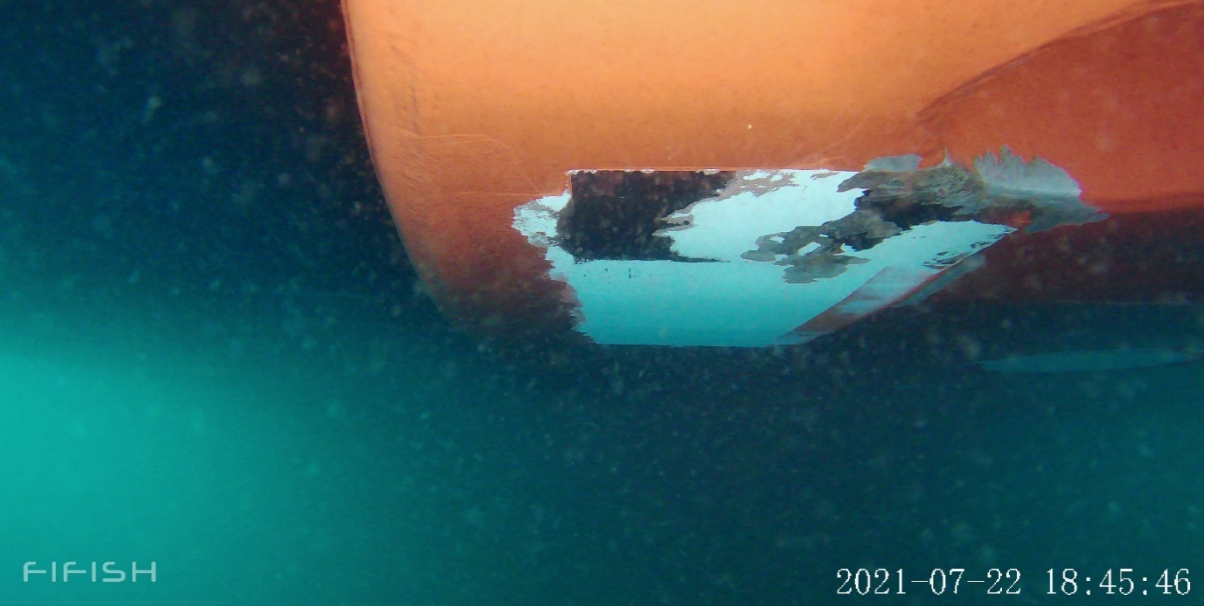
Depth:8.21m;Temp:0C



FIFISH

2021-07-22 18:43:43

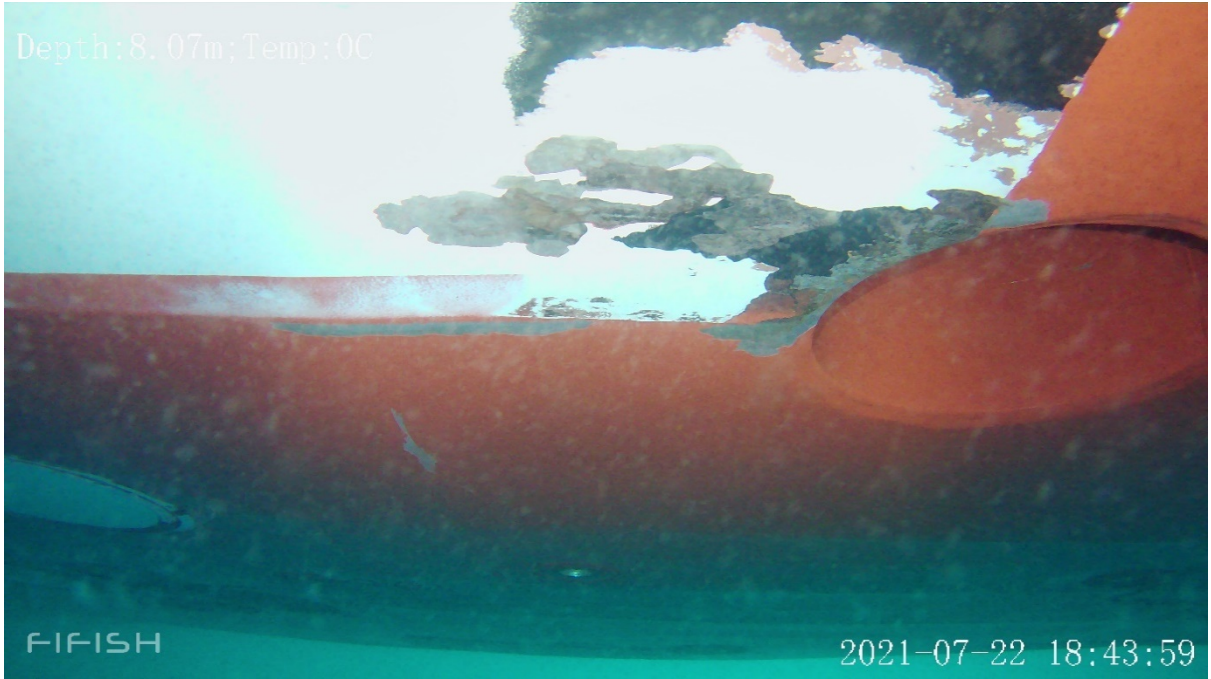
Depth:7.82m;Temp:0C



FIFISH

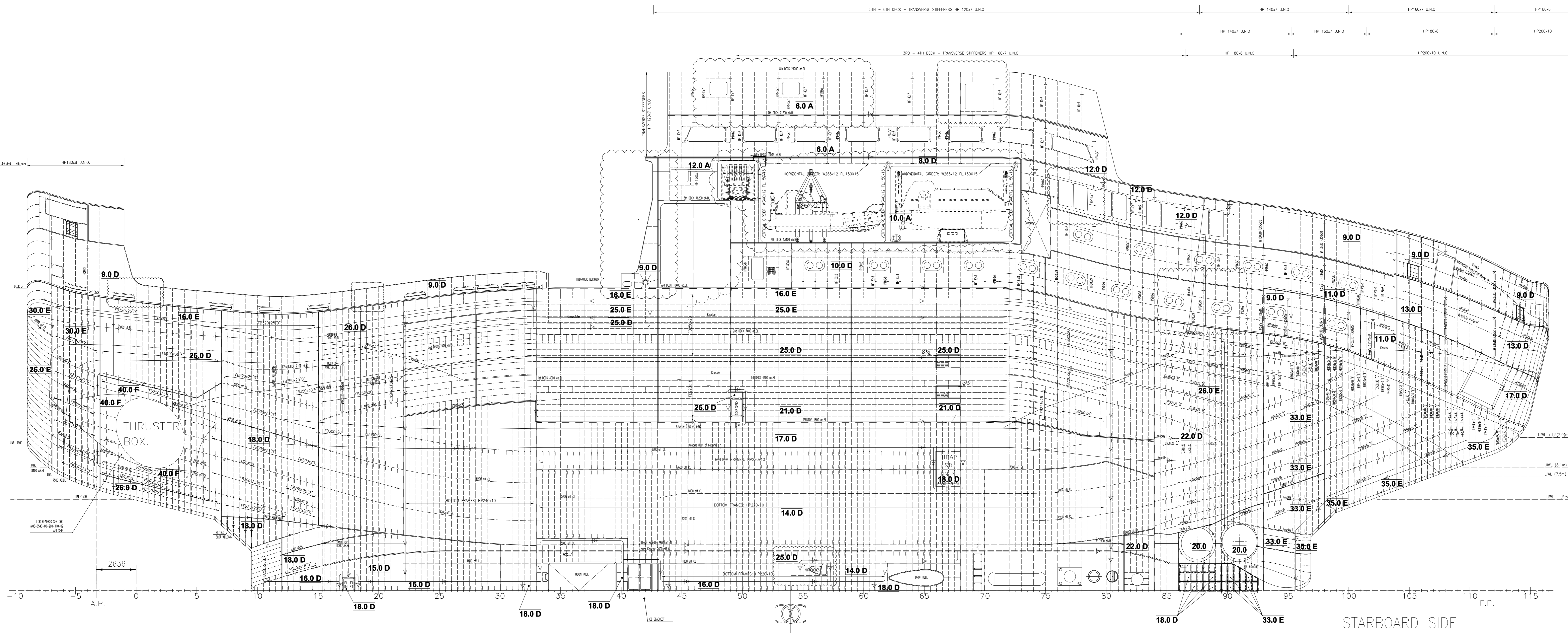
2021-07-22 18:45:46

Depth:8.07m;Temp:0C

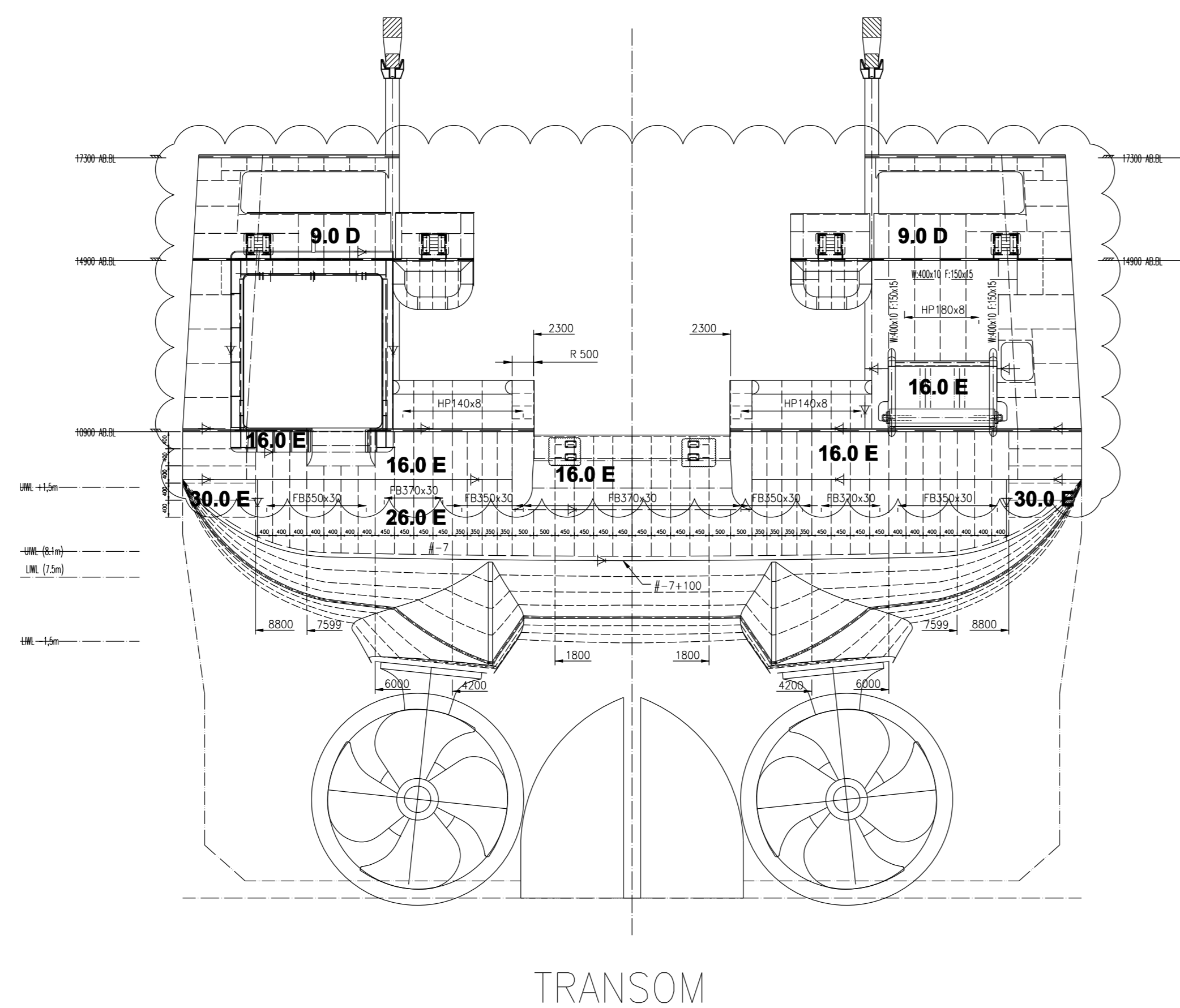


FIFISH

2021-07-22 18:43:59



LONGITUDINAL BULKHEAD
mm 2300 off centreline
Port side shown - Sbd side
symmetrical



Main Particulars

Length O.A.	Approx.: 100,40 M
Length between PP.	: 84,80 M
Length (Rule)	Approx.: 91,64 M
Breadth Moulded	: 21,00 M
Depth Deck 3	: 10,40 M
Design Draught	Approx.: 7,60 M
Scantling Draught	Approx.: 8,65 M

Accommodation for 55 Persons in
21 Single Cabins, 17 Double Cabins.

CLASS:
DNV + 1A1, E0, RP, NAUT-OSV(A), CLEAN
DESIGN, PC3 Icebreaker, DAT(-35),
WINTERIZED BASIC, HELDK-SHF, DYNPOS-AUTS,
CONF-V(3)/C(2), DK(+)

FINCANTIERI REGISTRATION NUMBER (ONLY FOR DOCUMENTATION MANAGEMENT)		REVISION DESCRIPTION	
ECR/ECO NUMBER	REV.	DATE	DESCRIPTION
ECR/ECO 086255-02053	02	24.03.17	ADDED CASINGS & REVISED OPENINGS
ECR/ECO 086255-04987	03	20.11.18	INTEGRATIONS AND DNV COMMENTS IMPLEMENTED
086255-111003M	00	22.12.14	DNV Approved

Table with 5 columns: Rev., Date, Reason for issue, Made by, Check by, Disc. by, Client rep.

Rev.	Date	Reason for issue	Made by	Check by	Disc. by	Client rep.
5	08.07.15	Rev/MI Thrusters, various opening and components implemented	YS&T			
4	04.12.14	DNV comments implemented	RG			
3	16.09.14	Reissued for DNV approval	RG			
2	07.07.14	Issued for DNV approval	RG			
1	28.03.14	Issued for approval	SVE			

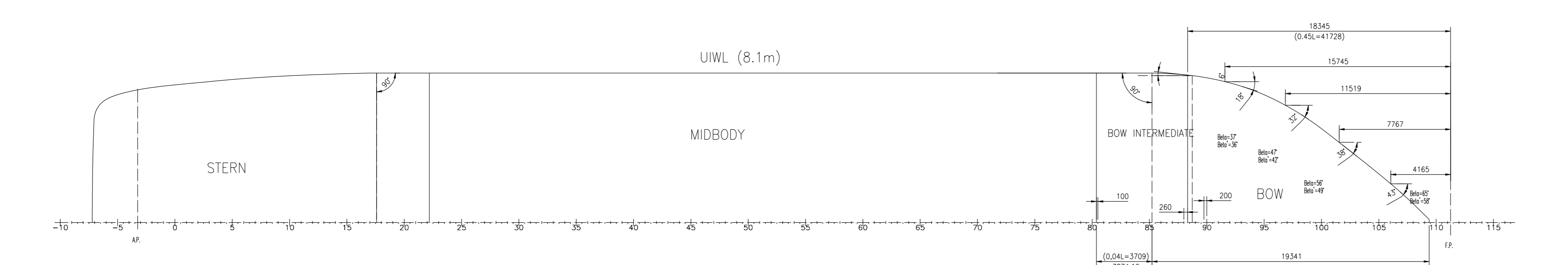
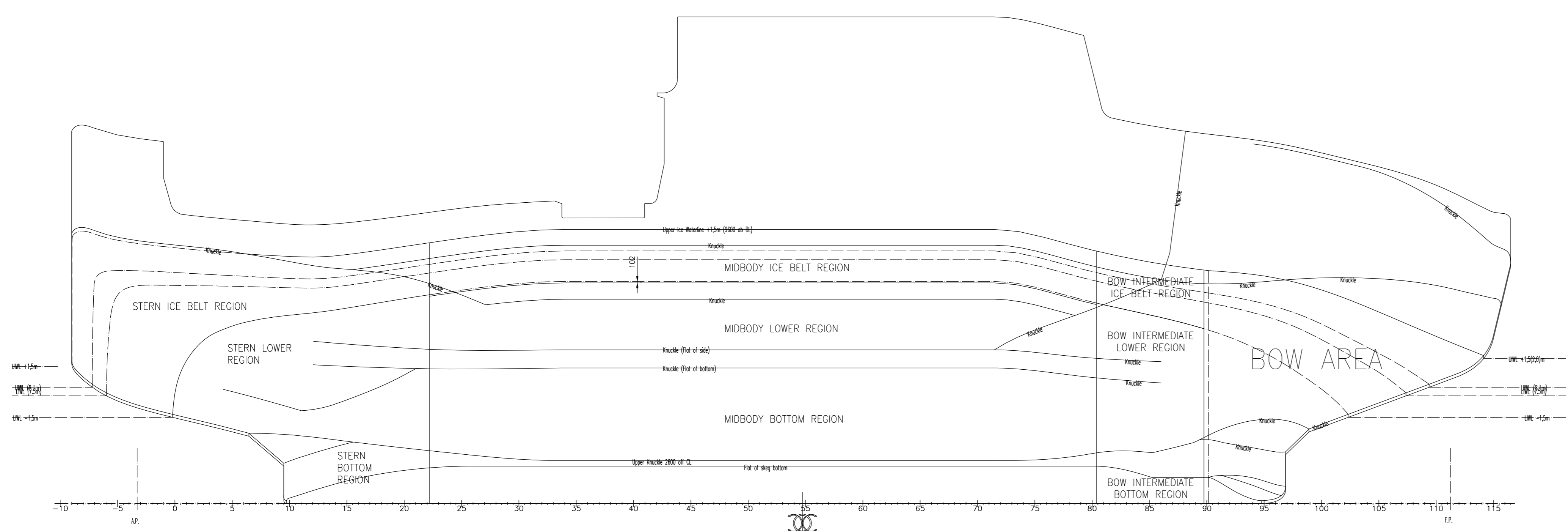
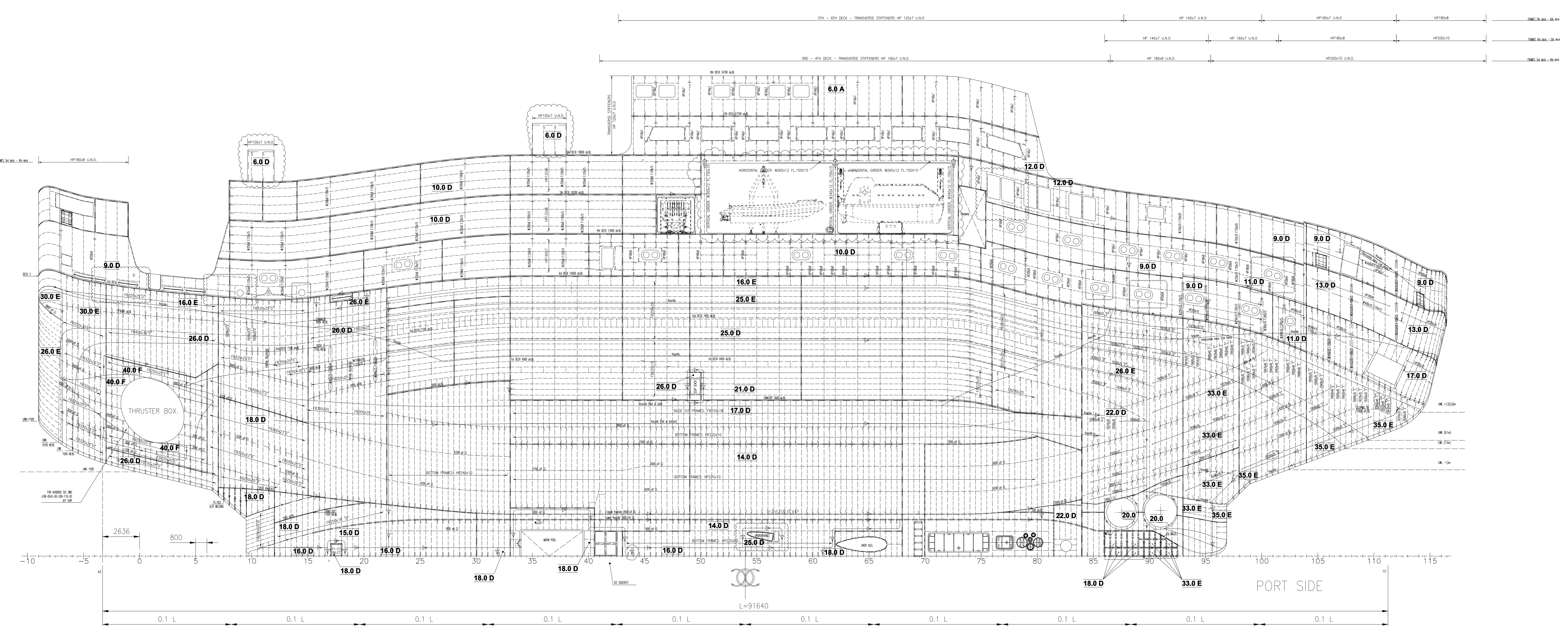
CUSTOMER: FINCANTIERI
Yard no.: 6255

TITLE: SHELL EXPANSION & FRAMING PLAN

DOCUMENT NO: 08-6543-00-200-005

Scale: 1:100 | Format: A0 | Version: 4.0

Rolls-Royce
NVC-Design



NOTE: EXTENSION OF ICE BELT ACC. TO PC3

Main Particulars	
Length O.A.	Approx.: 100,40 M
Length between PP.	: 84,80 M
Length (Rule)	Approx.: 91,64 M
Breadth Moulded	: 21,00 M
Depth Deck 3	: 10,40 M
Design Draught	Approx.: 7,60 M
Scantling Draught	Approx.: 8,65 M

Accommodation for 55 Persons in 21 Single Cabins, 17 Double Cabins.

CLASS:
DNV + 1A1, EQ, RP, NAUT-OSV(A), CLEAN
DESIGN, PC3 Icebreaker, DAT(-35),
WINTERIZED BASIC, HELD-SHF, DYNPOS-AUTS,
COMF-V(3)/C(2), DK(+)

FINCANTIERI REGISTRATION NUMBER (ONLY FOR DOCUMENTATION MANAGEMENT)			
ECR/ECO NUMBER	REV.	DATE	REVISION DESCRIPTION
ECR/ECO 086255-02053	02	24.03.17	ADDED CASINGS & REVISED OPENINGS
ECR/ECO 086255-00987	01	20.11.15	INTEGRATIONS AND DNV COMMENTS IMPLEMENTED
ECR/ECO 086255-110003M	00	22.12.14	DNV Approved

Scale: 1:100

CUSTOMER: FINCANTIERI

Yard no.: 6255

Rolls-Royce

UT-Design

SHIP Technology
Offshore Systems

Rolls-Royce Marine AS
Kongsberg
1405
Kongsbergveien 10
N-3700 Kongsberg
Norway

FORM: 4.0

DATE: 24.03.17

PROJECT: SHELL EXPANSION

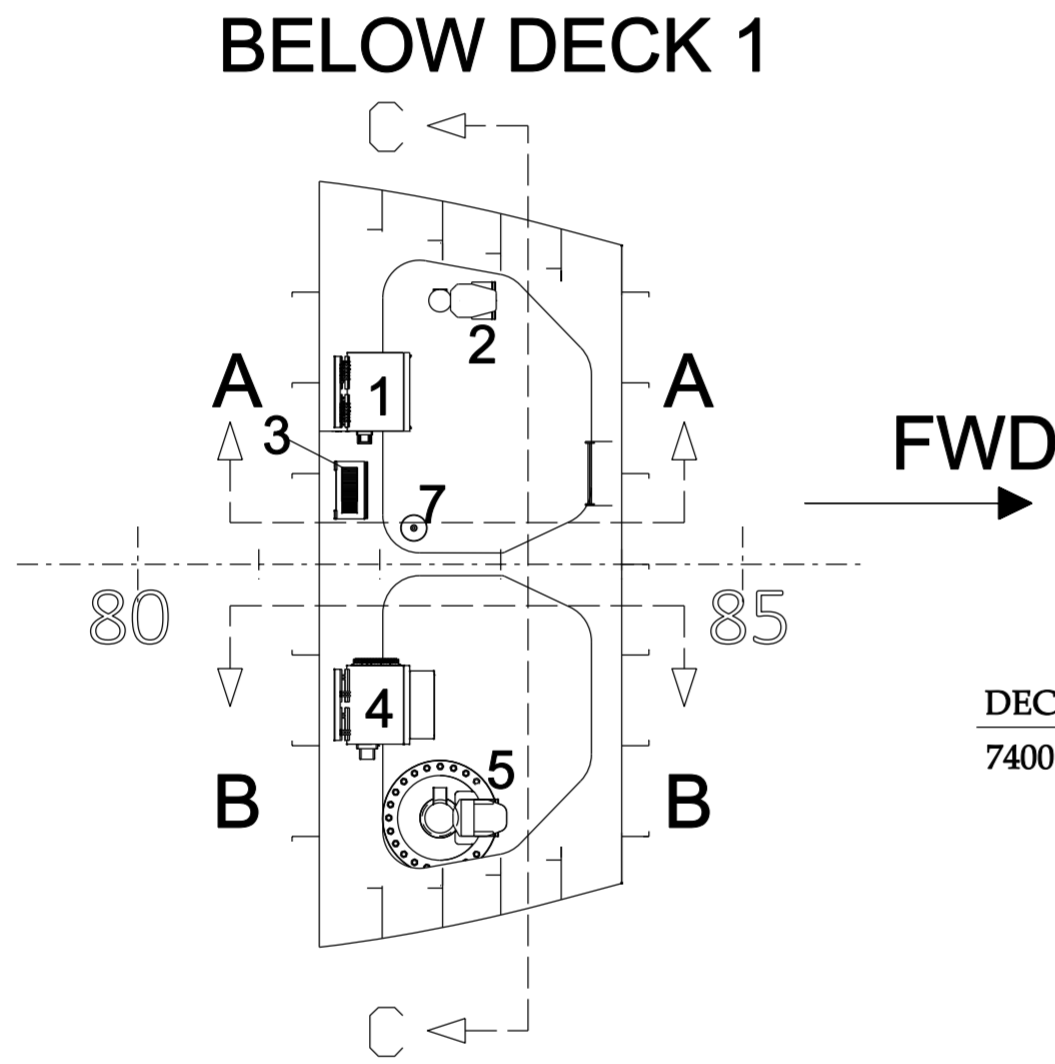
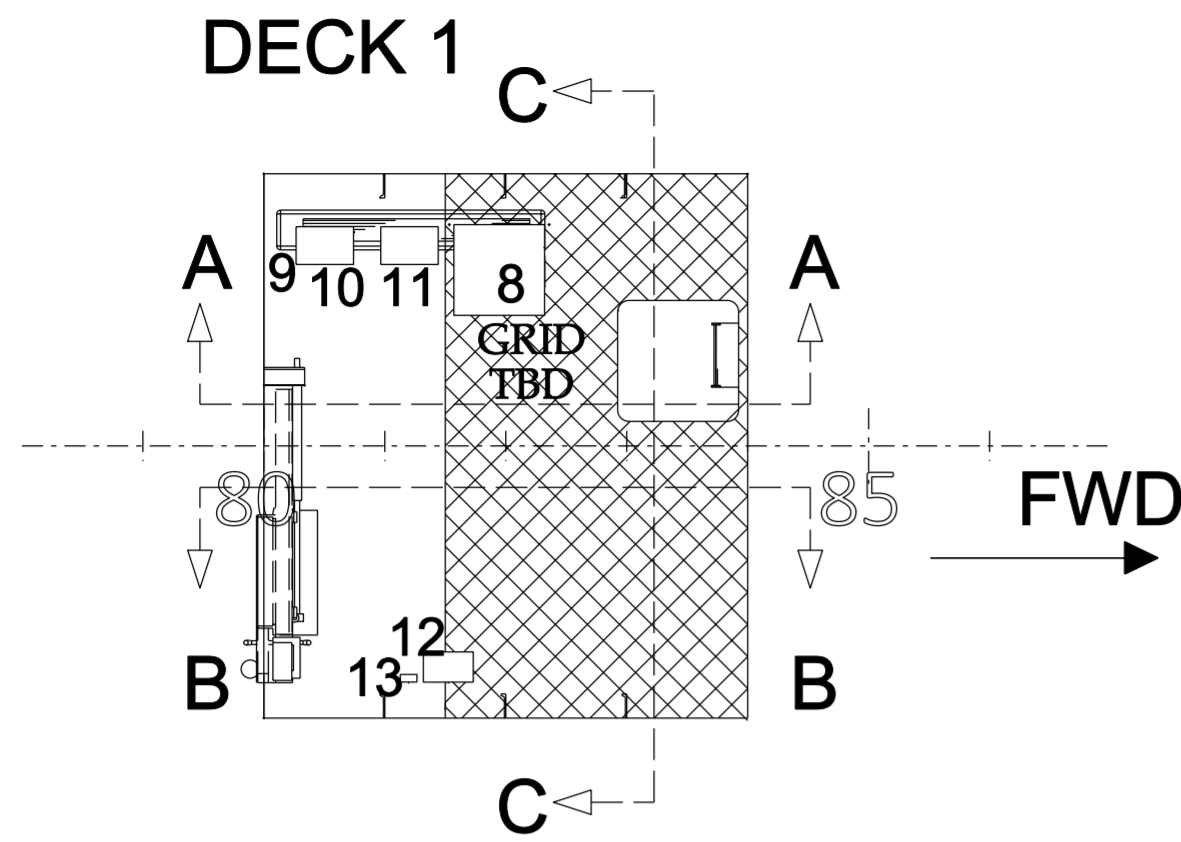
SHEET: SHEET 2 OF 2

DOCUMENT NO: 08-6543-00-200-005-02

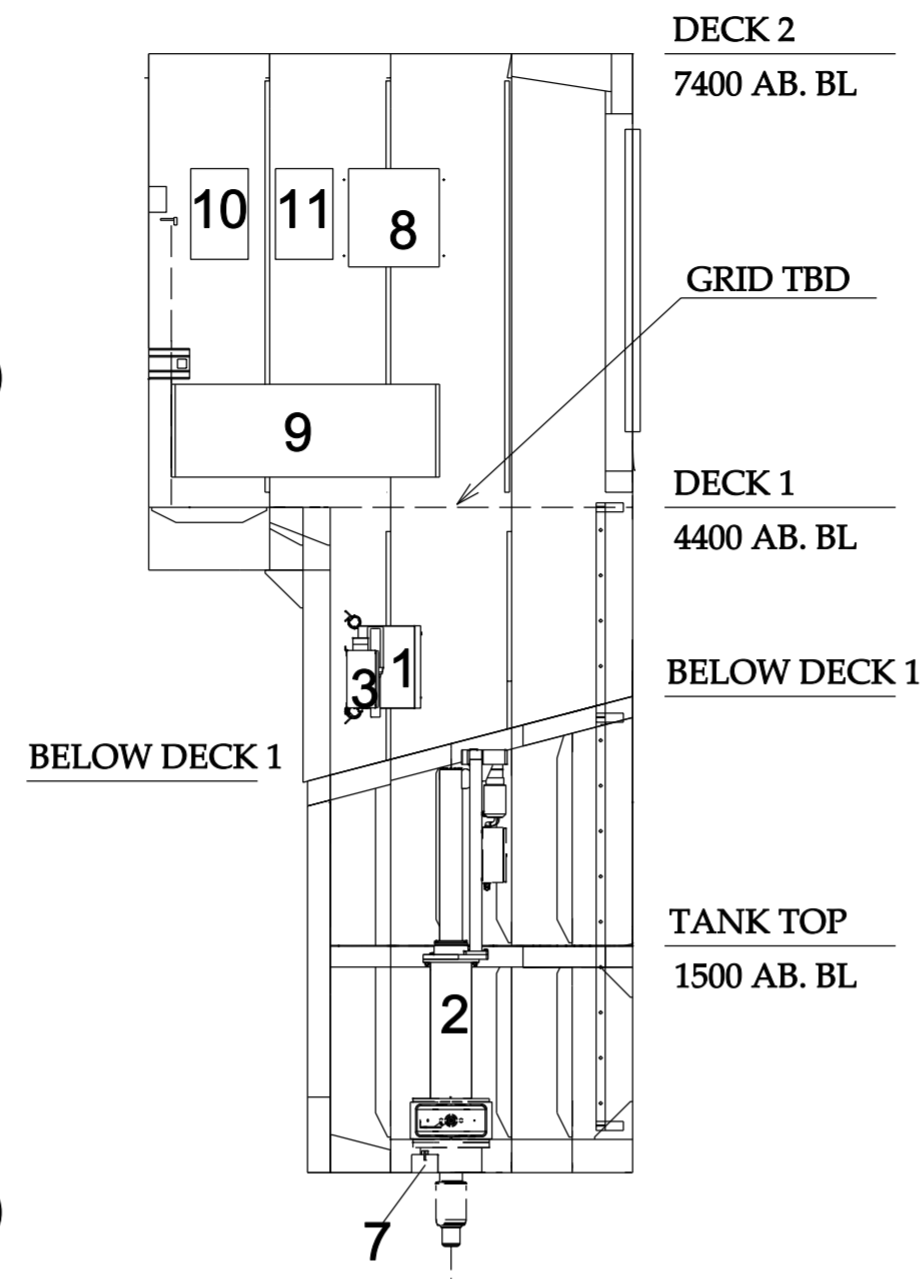
Scale: 1:100

Format: A0

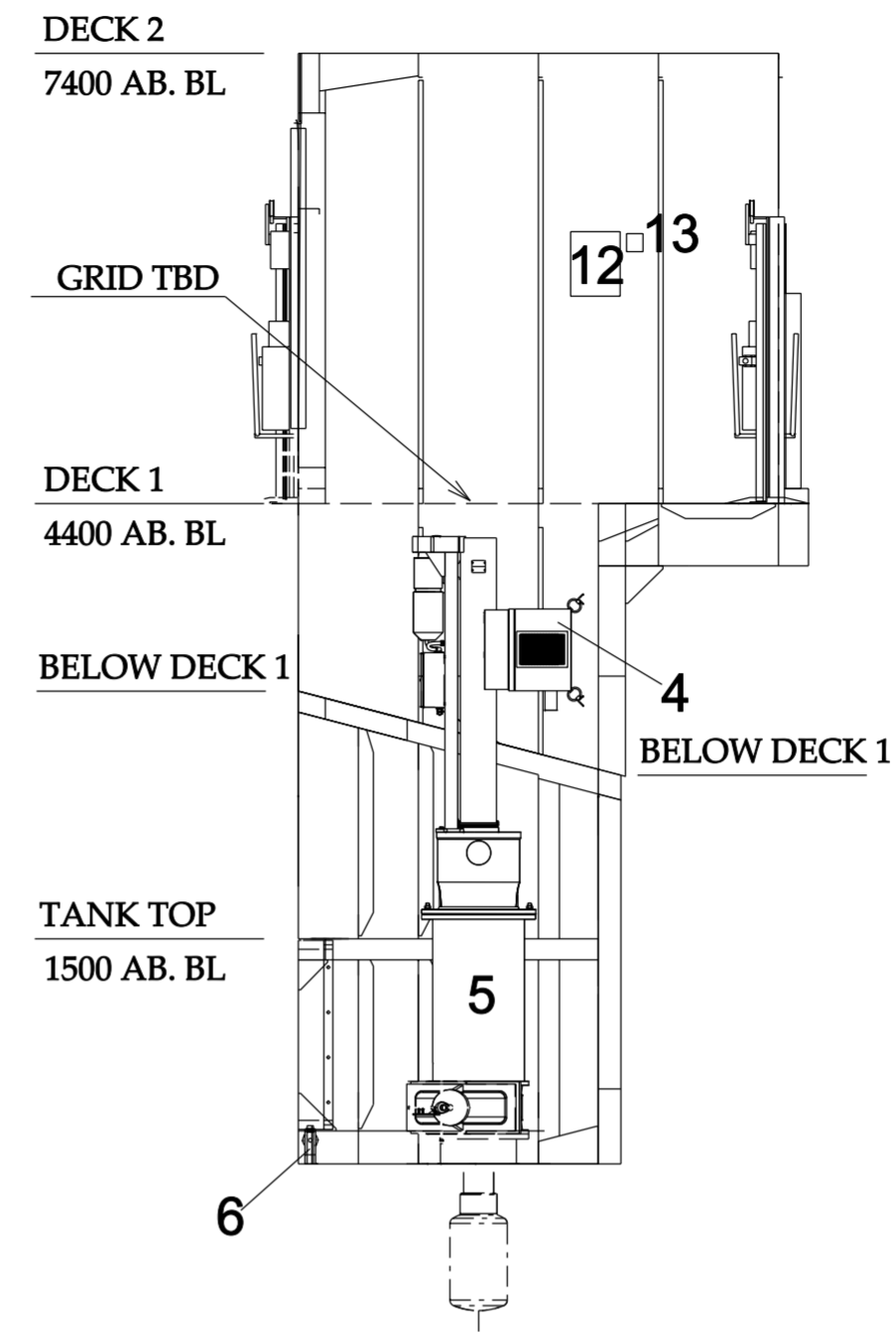
Version: 4.0



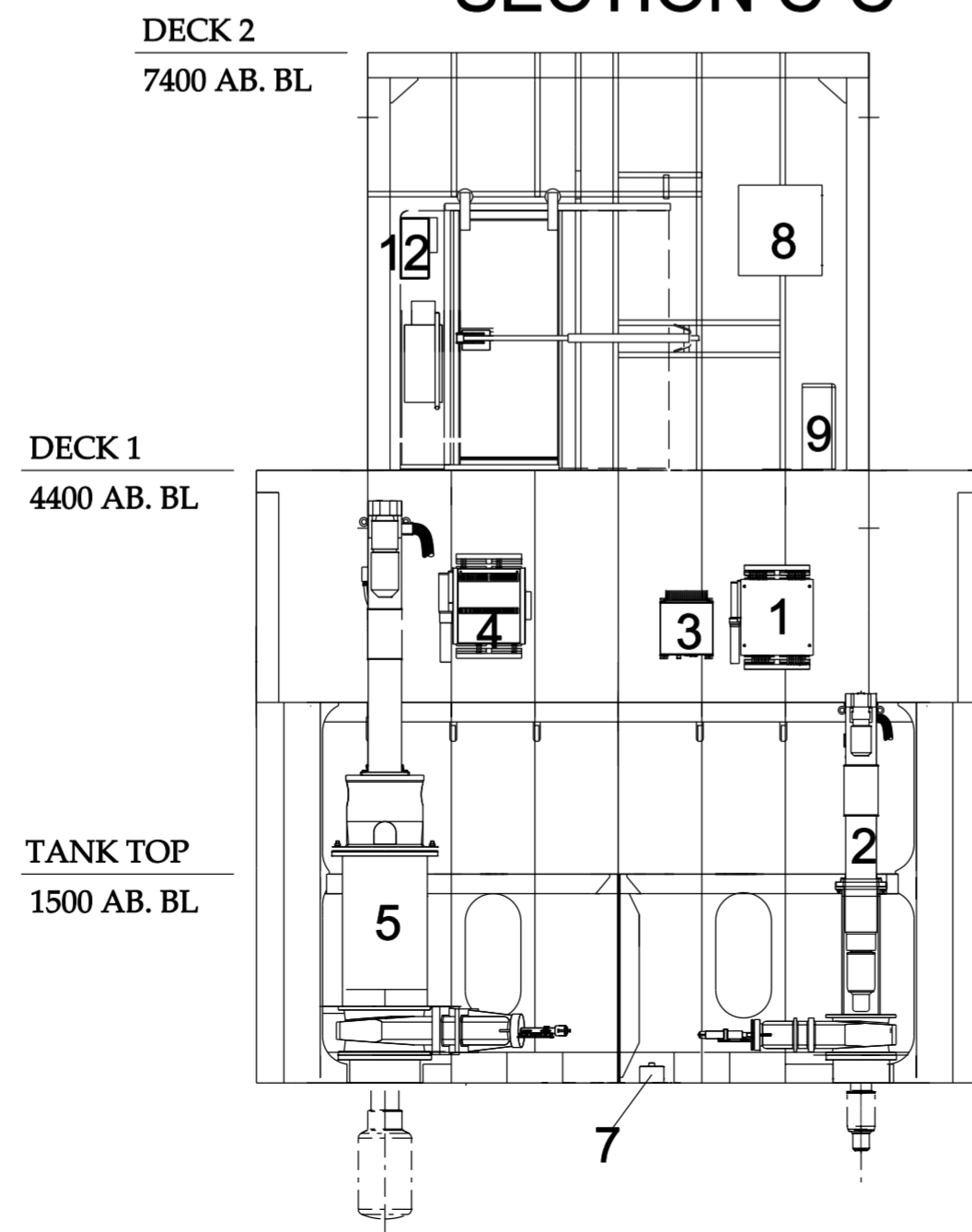
SECTION A-A



SECTION B-B



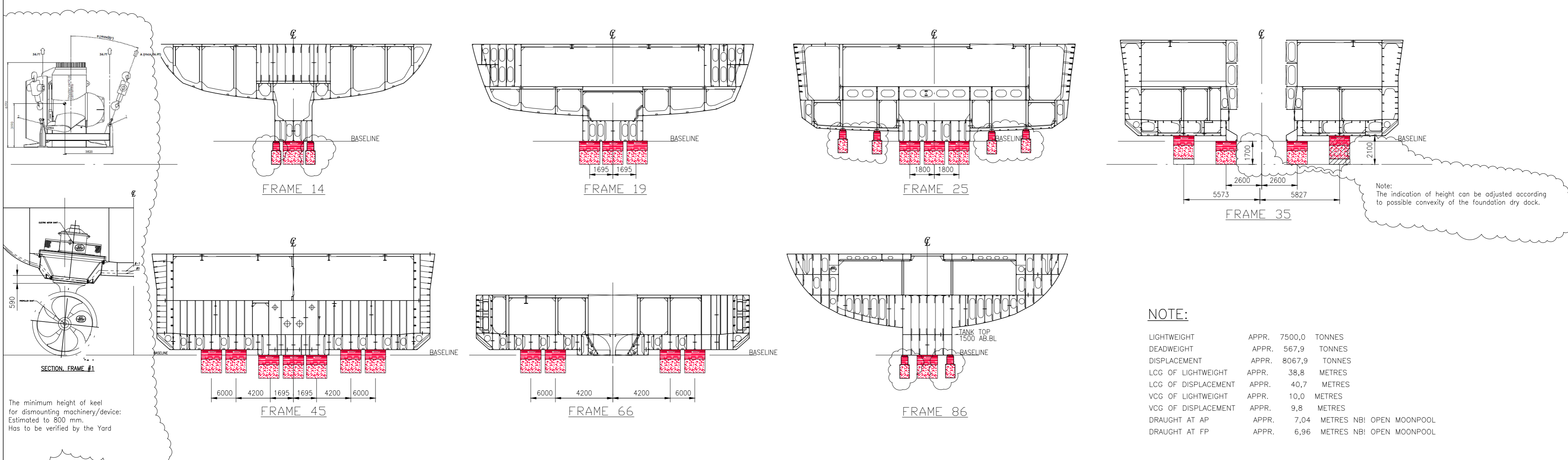
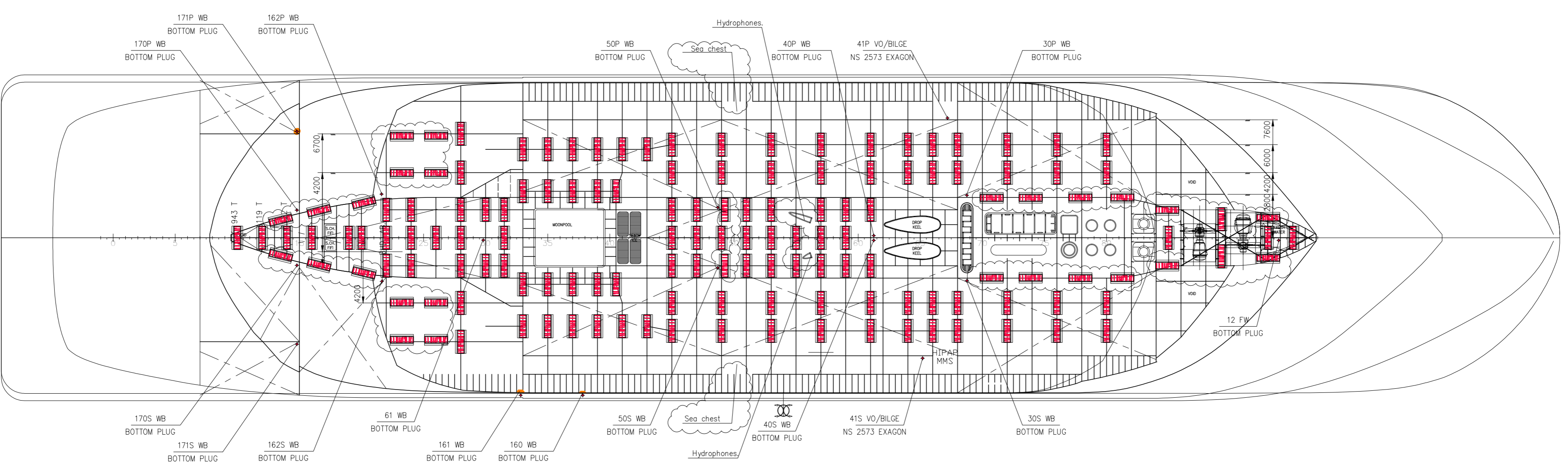
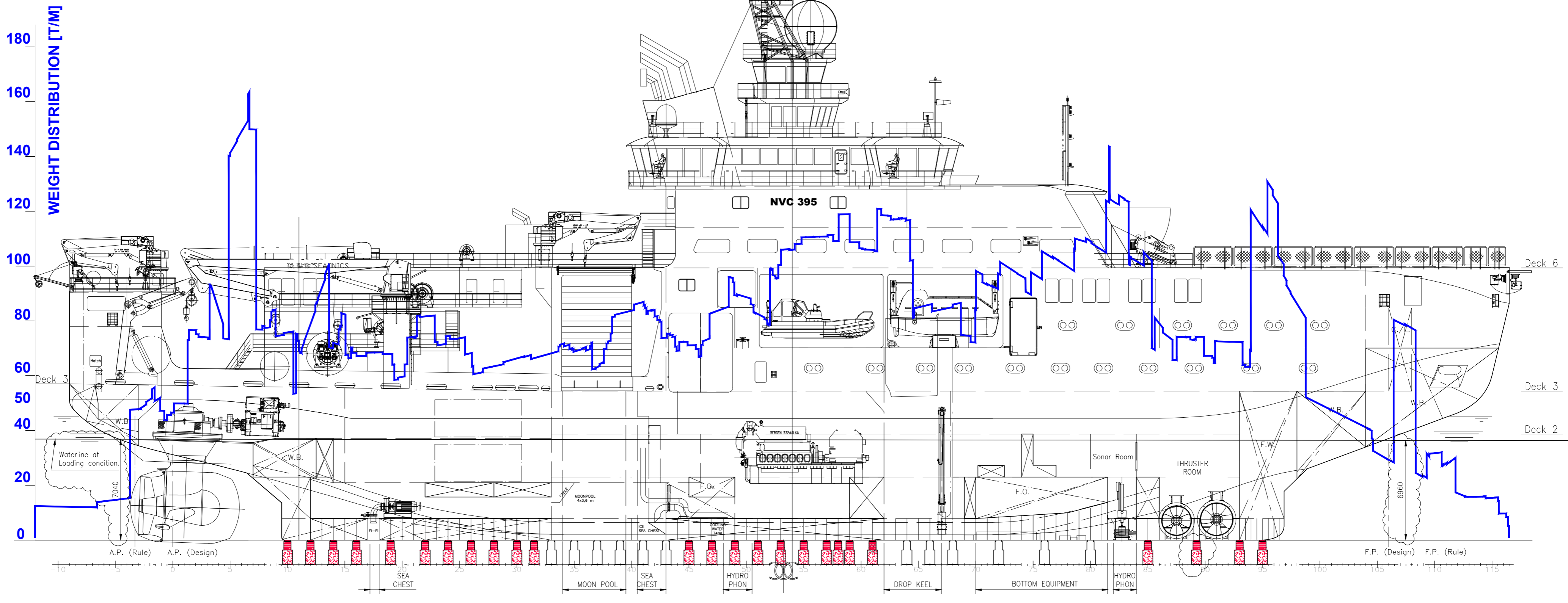
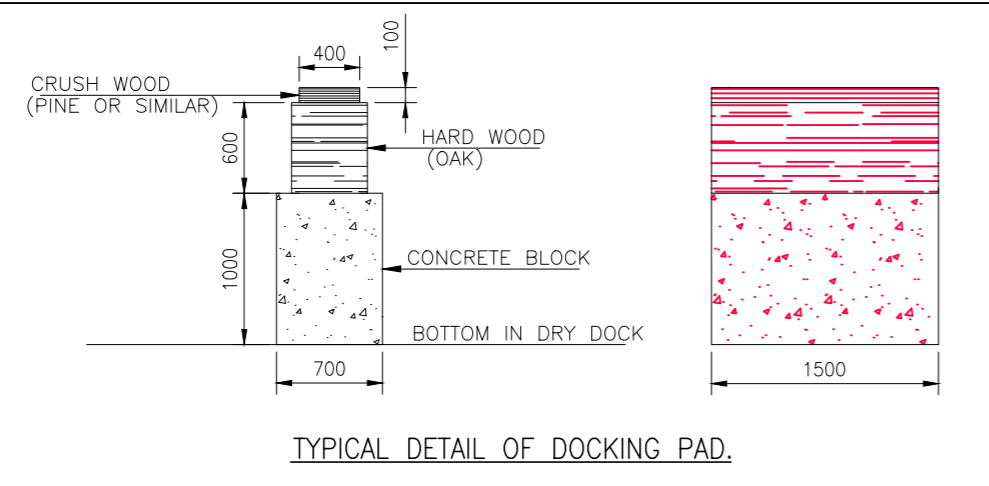
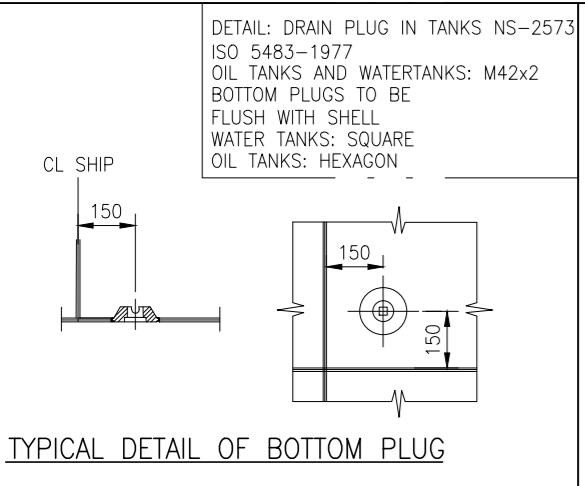
SECTION C-C



ID	System	Equipment
1	Fishery Omni-directional Sonars	S.E. - SH90 - Transceiver Unit with full circle stabilization SW. 220VAC
2	Fishery Omni-directional Sonars	S.E. - SH90 - Sonar Hull Unit with transducer
3	Fishery Omni-directional Sonars	S.E. - SH90 - Power Supply for Transceiver Unit
4	Fishery Omni-directional Sonars	S.E. - SU90 - Transceiver Unit with full circle stabilization SW.
5	Fishery Omni-directional Sonars	S.E. - SU90 - Sx93 Hull Unit with transducer
6	Integrated navigation system	Speedlog - Log Transducer DL850S27G-SB
7	Integrated navigation system	Echosounder - Transducer 50 kHz ETN050T
8	Field Bus	Rack Field Bus 38
9	HVAC	Fan Coil C-13
10	Fishery Omni-directional Sonars	S.E. - SH90 - Control Cabinet gate valve
11	Fishery Omni-directional Sonars	S.E. - SU90 - Control Cabinet gate valve
12	Integrated navigation system	Speedlog - Transceiver Cabinet DL850T27-SB
13	Integrated navigation system	Echosounder - Junction Box for Skipper Echo Sounder

FINCANTIERI REGISTRATION NUMBER (ONLY FOR DOCUMENTATION MANAGEMENT)			
FINCANTIERI DRWG. NUMBER	REV.	DATE	REVISION DESCRIPTION
006255GG5910009M	0	08.11.2016	
	1	07.07.2017	ECR/ECO N. 006255-02465

1.0	15.09.15	Drawn by FC			RAV		
Rev.	Date	Reason for issue			Made by	Chk'd by	Disc. appr.
CUSTOMER				TITLE			
FINCANTIERI				SONAR ROOM			
Yard no.: 6255				DOCUMENT NO: 08-6543-00-106-2017-001			
Rolls-Royce				Scale: 1:50			
Rolls-Royce Marine AS Postboks 1022 N-0102 Alnestr., NORWAY Tel: +47 815 20 070 E-mail: rrm@rolls-royce.com Licence no: 0190 971 379				Format: A2			
Version: 1.0				This drawing/specification is the property of Rolls-Royce Marine AS and must not be copied or any information revealed in violation therewith. It must not be used for any other project than for which it was originally ordered. The receipt of the drawing / specification implies that the conditions mentioned herein are accepted.			



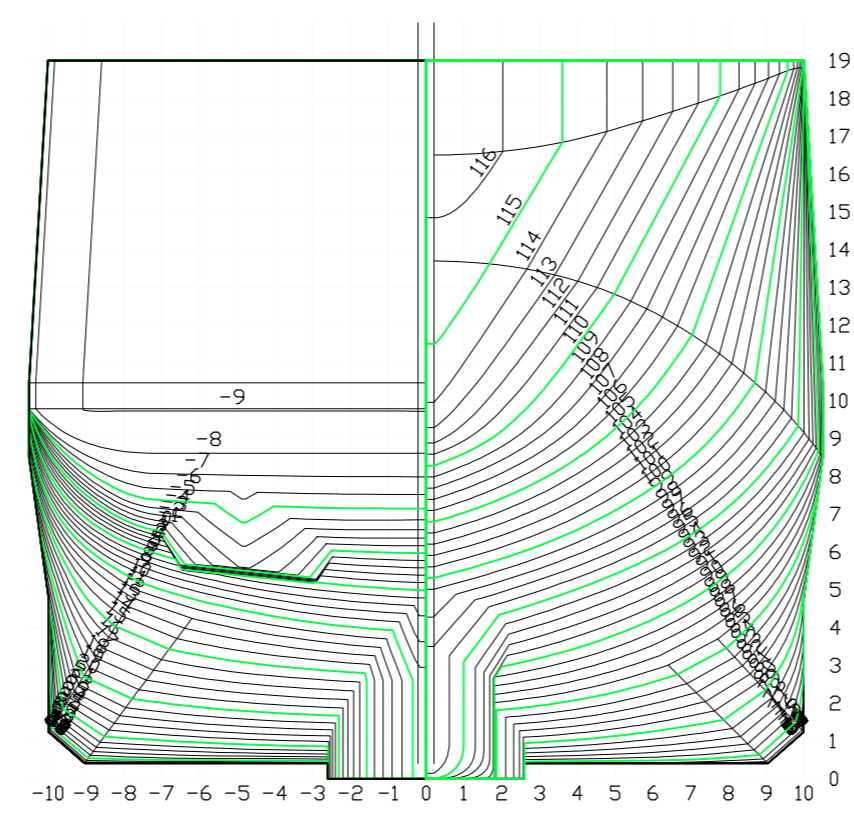
The minimum height of keel for dismounting machinery/device: Estimated to 800 mm. Has to be verified by the Yard

PRINCIPAL DIMENSIONS

L.O.A.	100,40 m
L.P.P.	84,80 m
BREADTH MLD	21,00 m
DEPTH 3rd. DECK MLD	10,40 m
DRAUGHT DESIGN	7,60 m
DRAUGHT SCANTLING	8,65 m

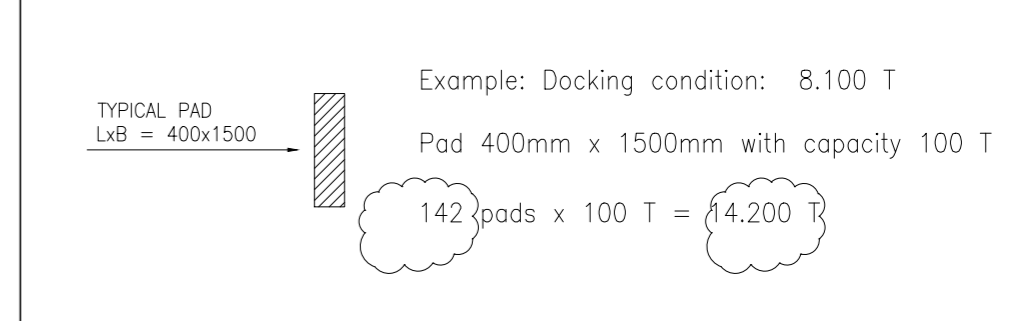
CLASS:

DNV 1A1, EO, RP, NAUT-OSV(A), CLEAN DESIGN, PC3 Icebreaker, DAT(-35), WINTERIZED BASIC, HELDK-SHF, DYNPOS-AUTS, COMP-V(3)/C(2), DK(+)



NOTE:

LIGHTWEIGHT	APPR. 7500,0 TONNES
DEADWEIGHT	APPR. 567,9 TONNES
DISPLACEMENT	APPR. 8067,9 TONNES
LCG OF LIGHTWEIGHT	APPR. 38,8 METRES
LCG OF DISPLACEMENT	APPR. 40,7 METRES
VCG OF LIGHTWEIGHT	APPR. 10,0 METRES
VCG OF DISPLACEMENT	APPR. 9,8 METRES
DRAUGHT AT AP	APPR. 7,04 METRES NBI OPEN MOONPOOL
DRAUGHT AT FP	APPR. 6,96 METRES NBI OPEN MOONPOOL



2	05.10.16	Comments from Yard implemented	kp			
1	17.12.15	Issue for approval	gode			
Rev.	Date	Reason for issue	Made by	CHK'd by	Disc. appr.	Client appr.
CUSTOMER			TITLE			
FINCANTIERI			DOCKING PLAN			
Yard no.: 6255			DOCUMENT NO: 08-6543-00-102-030			
Rolls-Royce Ship Technology Offshore Systems			Scale: 1:250			
Rolls-Royce Marine AS Postbox 1522 N-4022 Narvik, NORWAY Tel: +47 815 20 070 Homepage: www.rolls-royce.com Enterprise NO 980 371 379			Format: A1			
NVC-Design™			Version: 2.0			

This drawing/specification is the property of Rolls-Royce Marine AS and must not be copied or the contents thereof or any information received in conjunction therewith must not be imported to any unauthorized third party. It must not be used for any other project than for which it was originally ordered. The receipt of the drawing/ specification makes that the conditions mentioned herein are accepted.