

Garantikrav 0877 Vinduskarmer

Jobbdetaljer

Start Dato	20.11.2022	Utføres av	Verksted	<input checked="" type="checkbox"/> Kritisk jobb
Varighet	7 Dag(er)	Valgte leverandør		
Fremdrift		Ekstern Jobb Nr.		
		Jobbansvarlig		
		Kontrolleres av	Reders representant	
Lokasjon				

Denne jobben gjelder følgende komponenter/utstyr:

515.005 Vinduer

Følgende tjenester skal inkluderes som en del av arbeidsomfanget og omfattes av oppgitt pris for arbeidet:

Nødvendig materiale for utførelse av arbeidet skal leveres av Verkstedet.

Jobbeskrivelse

Det skal legges Armaflex eller lignende på vinduskarmer på bro, oppholdsrom (dagrom), messe og bibliotek. Produktet skal være av godkjent type for brann og skal tåle UV-lys. Minimum tykkelse på isolasjon 2 mm. Den må tåle -35 grader celsius og lim må holde i denne temperaturen.

Det er flens som skal isoleres slik at det ikke danner seg kondens som renner ned i foring for vindu (trematerial).

Dette gjelder vinduskarmer i;

- Messe 3 stk dim H 2100x B1800(900x2) mm. Bredde flens 30 mm midtstokk 60 mm høyde 2100mm.
- Oppholdsrom (dagrom) 3 stk dim H 2100x B1800(900x2) mm bredde flens 30 mm midtstokk 60 mm høyde 2100mm.
- Bibliotek 1 stk dim H 2100x B1800(900x2) mm bredde flens 30 mm midtstokk 60 mm høyde 2100mm.

Bro 16 stk H2200xB1000 mm flens bredde 30 mm.

15 stk 1200x1000 flens bredde 30 mm.

2 stk H2200xB1000 flens bredde 60 mm. Dette er vindu som kan åpnes og det er montert ratt for låsing av vindu, se tvedlagt tegning.

19 stk 1800x1800 mm flens bredde 30 mm.

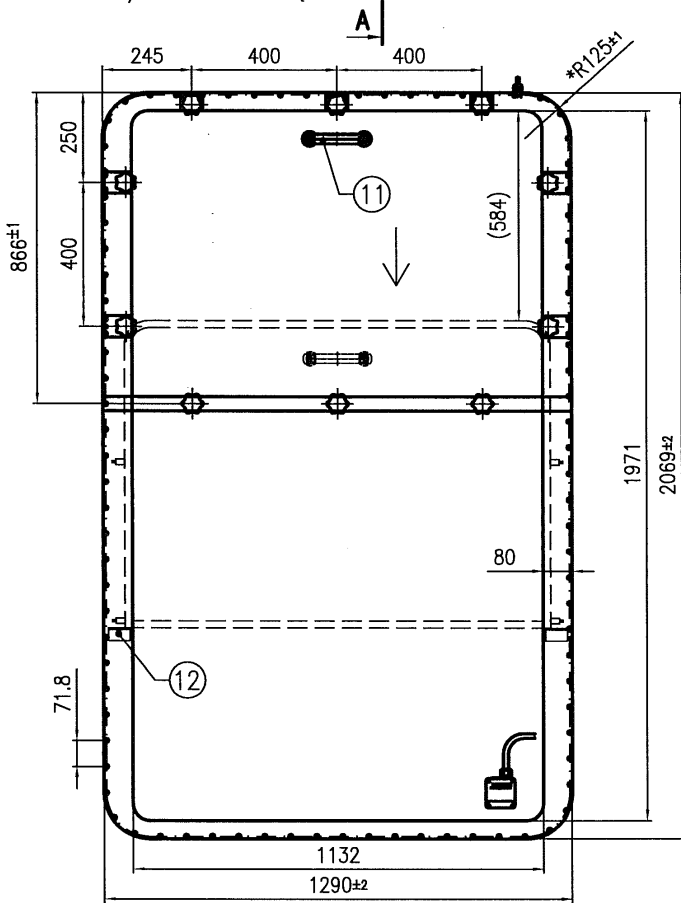
Legger ved typetegning av vindu, se vedlegg.

Vedlegg

Filnavn	Filbeskrivelse	Filstørrelse (kb)
Vindu bro.pdf	Vindu bro	251 kb
vindu bro åpning.pdf	vindu bro åpning	344 kb

Main dimensions and constructions according to: ISO3903 (windows) and ISO1751 (side scuttles).
 Windows and side scuttles comply to: Marine Equipment Directive (MED) 96/98/EC
 Operation Manual: IU-009
 (*) External dimensions of main frame

View from INSIDE / Widok od WEWNĄTRZ

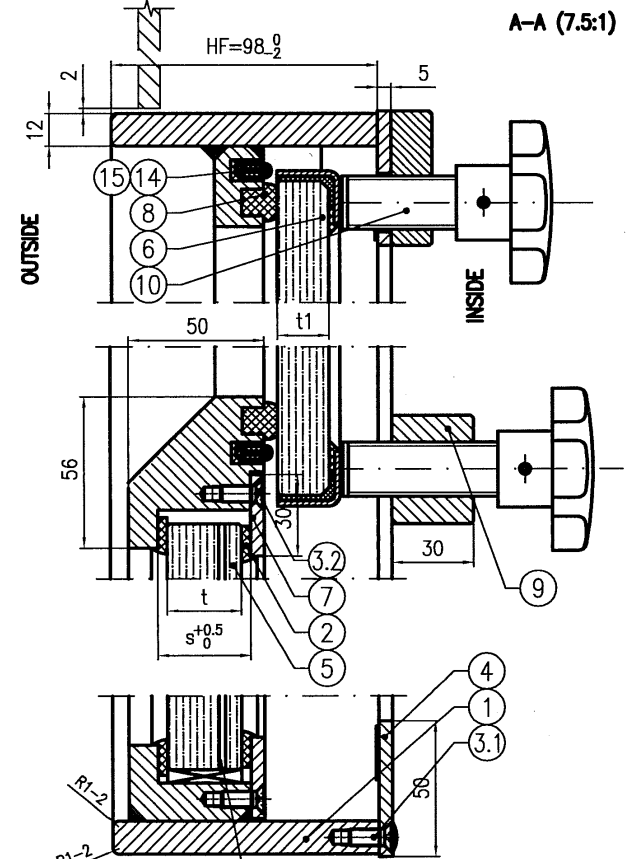
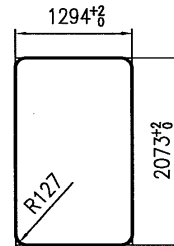


p.W825 - 1pcs.

$$s=34.3 \quad t=19FTG+2.28PVBH+06FTG=27.3$$

$$s1=26 \quad t1=19FTG$$

HOLE IN PLATE



Heat. el. 230V 60Hz 18W/dm2
 BH230 mini Power consumption: 4.46 kW

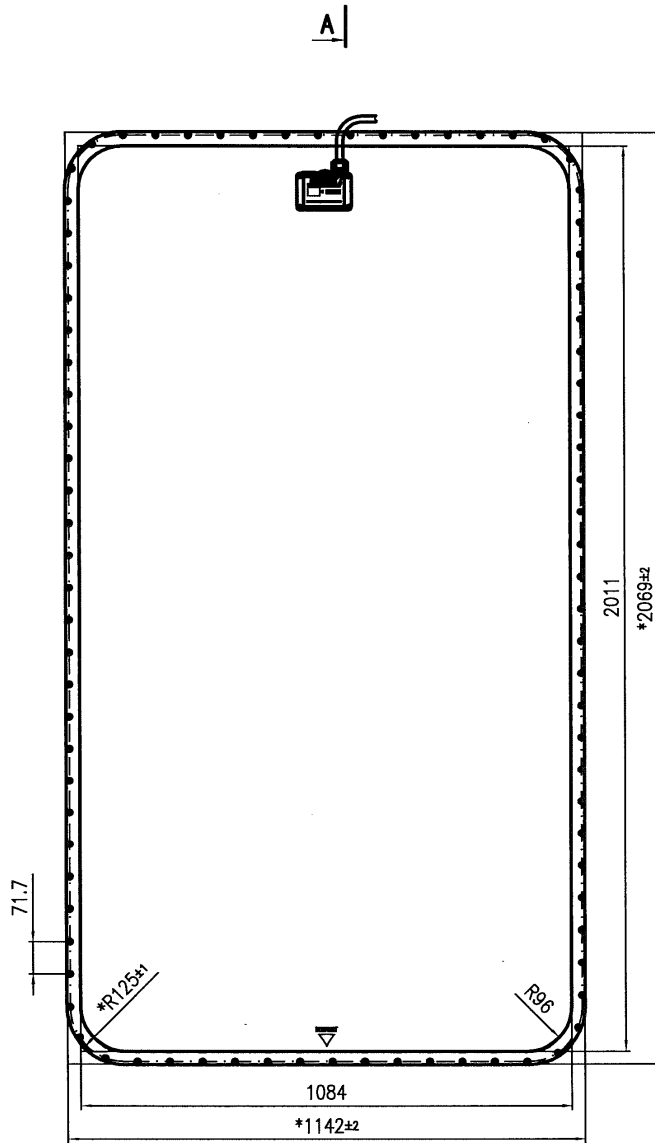
1	Kabel grzewczy/Heating wire	5BTV2-CR	14				szary
12	Klocek ustal./Alignment block	FCN.19546	13	Wood (bottom)/Rubber (sides+top)			
2	Ogranicznik otwarcia/Stopper	FCN.19546.W825-A	12	St. steel - 1.4306 (304L)	PN-EN10088		
1	Uchwyt szyby/Glass handle	DIRAK 150	11	Poliamide			
10	Pokr. docisk. kpl./Closing device	OZ-050 - C60	10	St. steel / Plastic			
1	Belka docisków/Bar's clamp	FCN.19546A.W825-6	9	St. steel - 1.4306 (304L)	PN-EN10088		
1	Uszczelka/Gasket	G-13x16	8	EPDM	ZN 66		
1	Nakładka/Glass retaining	FCN.19546A.W825-5	7	St. steel - 1.4306 (304L)	PN-EN10088		
1	Szyba ruchoma/Glass pane	FCN.19546A.W825-4	6	Thermally Toughened Safety Glass	ISO 614	FTG - Float Glass	
1	Szyba stała/Glass pane	FCN.19546A.W825-3	5	Thermally Toughened Safety Glass	ISO 614	FTG - Float Glass	
1	Nakładka/Glass retaining	FCN.19546A.W825-2	4	St. steel - 1.4306 (304L)	PN-EN10088		

76	Wkręt M6x16/M6x16 screw	ISO 7046-z	3.2	St. steel - A4-70	PN-EN ISO3506		
90	Wkręt M6x16/M6x16 screw	ISO 7047-z	3.1	St. steel - A4-70	PN-EN ISO3506		
2	Uszczelka/Gasket	SD-133X/SD-135N	2	EPDM	ZN 66		
1	Rama stała/Main frame	FCN.19546A.W825-1	1	Steel - DH36	PN-93/H-92147		
Ilość Q-ty	Nazwa części Item name	Nr rysunku/normy Drawing no./norm	Lp. Pos.	Material	Norma mat. Material norm	Uwagi Notices	
Odchyłki graniczne dla wymiarów nietolerowanych wg PN-EN22768-1:99 klasa-c./Deviation for dimensional without tolerance according to PN-EN22768-1:99 class-c. Tolerancje geometryczne dla elementów bez tolerancji wg PN-EN22768-2:99 klasa-L./Geometrical tolerance for elements without tolerance according to PN-EN22768-2:99 class-L.							
Konstruował/Design by		Hartwig F.		Material/Material		Nazwa/Name	
Rysował/Drawn by				2016/05/13		OKNO SUWANE PIONOWO	
Sprawdził/Checked by		Kowalewski A.				VERTICAL SLIDING WINDOW	
Zatwierdził/Approved by							
Podobnie/Scale		SLIW		BOHAMET®		Masa/Weight	
				Kontrakt/Contract FCN.19546o1B C.6255		Nr rysunku/Drawing no. FCN.19546.W825 D	
						Ilość/Q-ty 1	

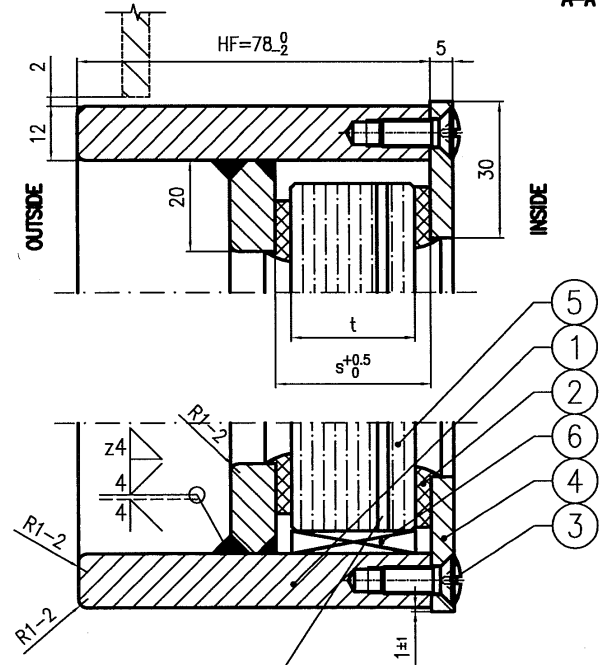
Z:\Rysunki\1_Produkcja okretowa\1_Kontrakty Zagraniczne\FCN - FINCANTIERI - WLOCHY\19546\19546o1B.dwg

Main dimensions and constructions according to: ISO3903 (windows) and ISO1751 (side scuttles).
 Windows and side scuttles comply to: Marine Equipment Directive (MED) 96/98/EC
 Operation Manual: IU-009
 (*) External dimensions of main frame

View from INSIDE / Widok od WEWNĄTRZ



A-A (10:1)

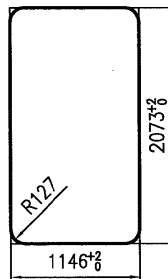


p.W812 - 1pcs.

Heat. el. 230V 60Hz 18W/dm2
 BH230 Power consumption: 3.91kW

s=34.3 t=19FTG+2.28PVBH+06FTG=27.3

HOLE IN PLATE



12	Klocek ustal./Alignment block	FCN.19546	6	Wood (bottom)/Rubber (sides+top)		
1	Szyba/Glass pane	FCN.19546	5	Thermally Toughened Safety Glass	ISO 614	FTG - Float Glass
1	Nakładka/Glass retaining	FCN.19546	4	St. steel - 1.4306 (304L)	PN-EN10088	
86	Wkręt M6x16/M6x16 screw	ISO 7047-z	3	St. steel - A4-70	PN-EN ISO3506	
2	Uszczelka/Gasket	SD-133X/SD-135N	2	EPDM	ZN 66	
1	Rama stała/Main frame	FCN.19546	1	Steel - DH36	PN-93/H-92147	

Odczytliki graniczne dla wymiarów nietolerowanych wg PN-EN22768-1:99 klasa-c./Deviation for dimensional without tolerance according to PN-EN22768-1:99 class-c.
 Tolerancje geometryczne dla elementów bez tolerancji wg PN-EN22768-2:99 klasa-L./Geometrical tolerance for elements without tolerance according to PN-EN22768-2:99 class-L.

Konstruował/Design. by	Hartwig F.		Material/Material	Nazwa/Name	Masa/Weight
Rysował/Drawn by				OKNO STALE	
Sprawił/Checked by	Kowalewski A.			FIXED WINDOW	
Zatwierdził/Approved by					
Podobnie/Scale	BOHAMET®	Kontrakt/Contract	Nr rysunku/Drawing no.	Any/Per	Ilość/Q-ty
		FCN.19546o1B	FCN.19546.W812	C	1
		C.6255			

Z:\Rysunki\1_Produkcja okretowa\1_Kontrakty\Zagraniczne\FCN - FINCANTIERI - WLOCHY\19546\19546o1B.dwg