

technical specification  
Vinmonopolet  
model. ladies blouse SS  
art no. 5400403



VINMONOPOLET

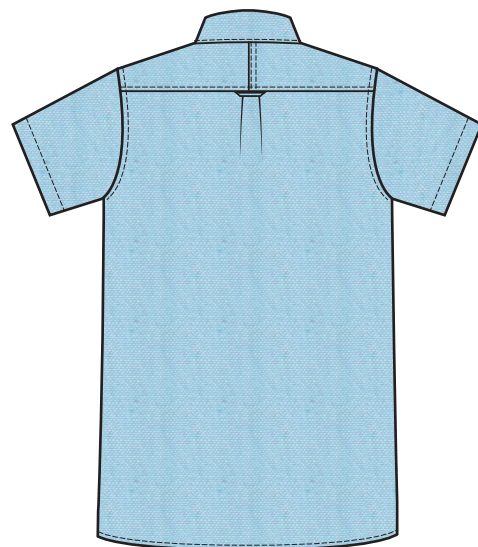
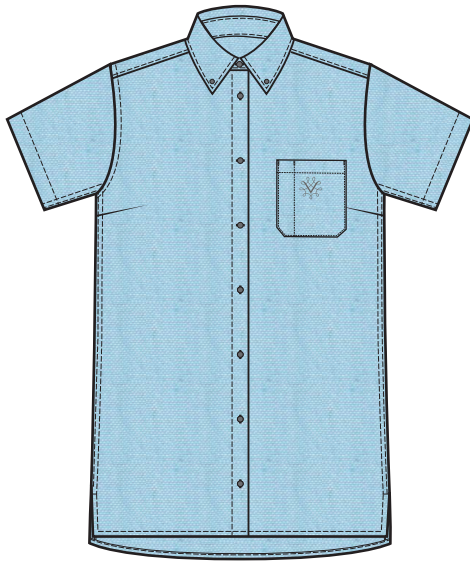
2021-10-30

## Article description

Ladies blouse short sleeve.  
Colour: Light blue (Angel falls)



Light blue  
(Angel falls)





## Fabric specification

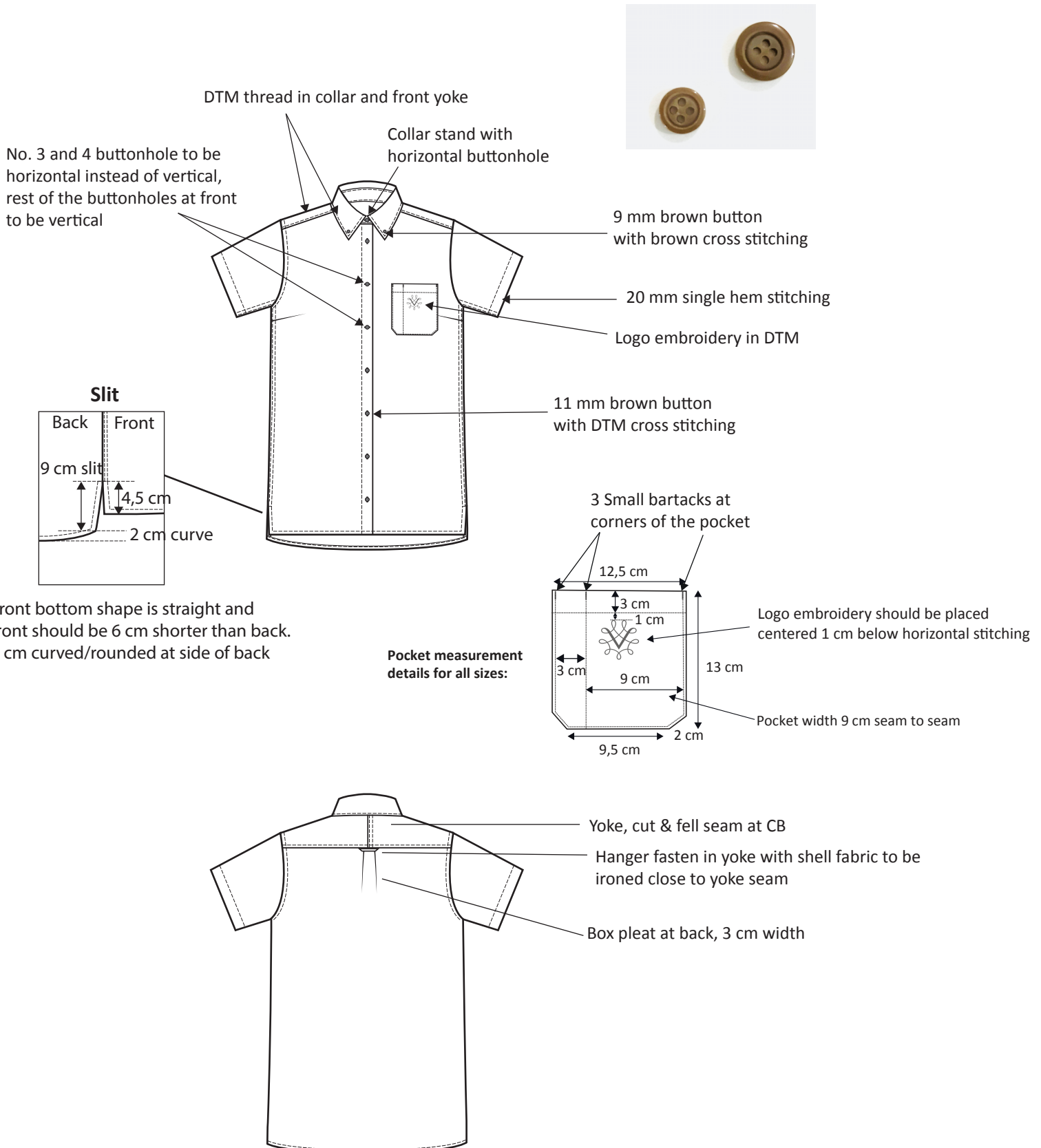
Supplier/Art no:	
Fabric composition:	80% combed cotton, 20% polyester
Fabric construction:	28x28, 84x68, plain weave
Fabric weight:	135 gsm
Colour:	Light blue (Angel falls)
Finish:	Regular finish

## Quality requirements:

Test	Test method	Min. requirement
Dimensional stability to washing	EN ISO 3759, EN ISO 6330, EN ISO 25077, 60°C, Tumble dry	Length: max -2% Width: max -2%
Colour fastness to washing	EN ISO 105-CO6, 60°C	Colour change 4 Colour staining 4
Colour fastness to rubbing	EN ISO 105-X12	Dry: 4 Wet: 3
Pilling Resistance, Martindale	EN ISO 12945-2, 7000 rev.	4
Abrasion Resistance, Martindale	EN ISO 12947-2 12 kPa, rev.	12000
Tear Strength	EN ISO 13937-2:2000, N	Warp: 15 Weft: 15
Tensile strength	EN ISO 13934-1:1999, daN	Warp: 26 Weft: 26
Seam Slippage, mm	EN ISO 13936-2	Warp: max 3 Weft: max 3
Certified according to Öko-Tex standard 100		YES



## Detail sketch





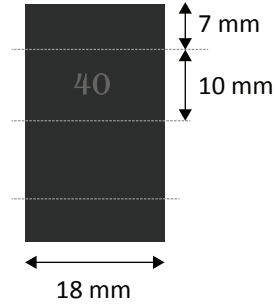
## Labels

### Main label



Endfolded woven label  
Placement inside neck 1 cm below neck  
Stitched on both ends only.

### Size label

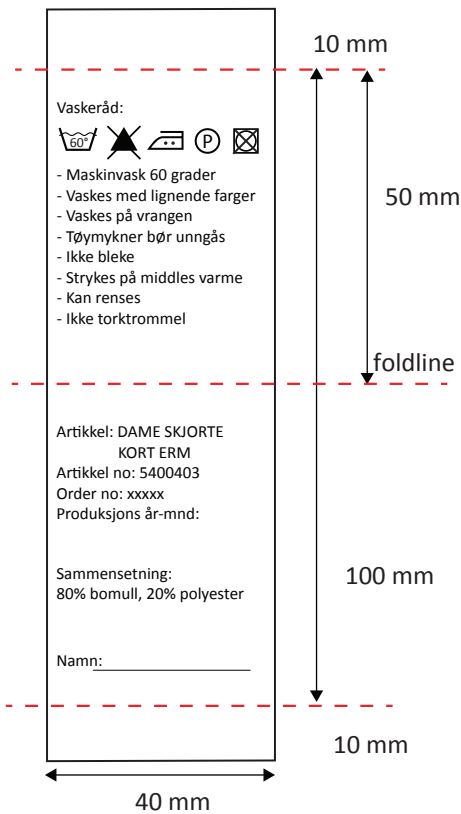


Midfolded woven size label  
Placement LHS of main label when wearing.



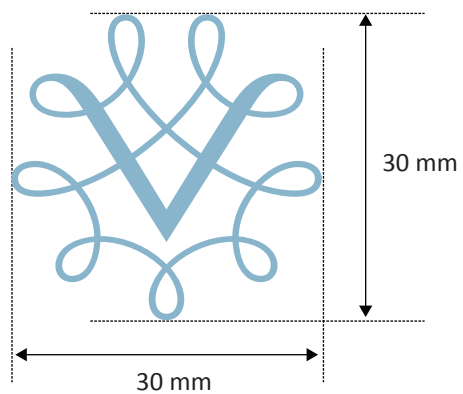
Size label placement

### Care label



Care label in White background  
with black printed text  
Quality: Woven Satin  
Placement on LHS side seam when wearing,  
10 cm from bottom.  
Fill in correct info acc to PO.  
Extra buttons attached on care label.

### Logo Embroidery:



Logo embroidery in DTM colour,  
should be placed centered 1 cm below  
horizontal stitching (for all sizes).

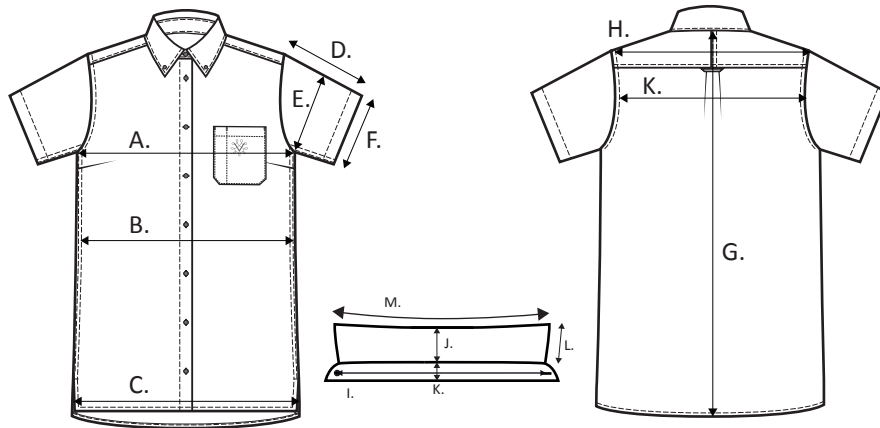


## BOM

Content	Description	Placement	Qty
Main fabric	80% combed cotton, 20% polyester		
Contrast fabric			
Insert fabric			
Lining			
Pocket lining			
Interlining 1	Woven fusible 100% cotton interlining, 140 gsm	Collar	
Interlining 2	Woven fusible 100% cotton interlining, 90 gsm	Collar stand	
Interlining 3			
Padding			
Rib 1			
Rib 2			
Tape 1			
Tape 2			
Tape 3			
Piping			
Binding			
Velcro tape 1			
Velcro tape 2			
Elastic			
Reflective tape 1			
Reflective tape 2			
Button 1	11 mm brown button	Front placket	8
Button 2	9 mm brown button	At collar	2
Button 3	Extra buttons (each sizes 11 mm+ 9 mm)	At care label	1+1
Zipper tape			
Zipper 1			
Zipper 2			
Zipper 3			
Puller 1			
Puller 2			
Buckle			
D-rings			
Rivets			
Stopper			
Cord			
Hook and eye			
Main label	End folded woven label	At inside CB neck	1
Size label	Woven mid folded label	LHS of main label	1
Flag label			
Logo badge label			
Logo zippuller			
Care label	Printed woven polyester satin label	On LHS in side seam 10 cm fr bottom	1
Hang loop			
Thread 1	100% core spun polyester thread in DTM	All seams	
Thread 2	100% core spun polyester thread in Brown	Button cross stitching	
Thread 3			
Collar bone			



Measurement list



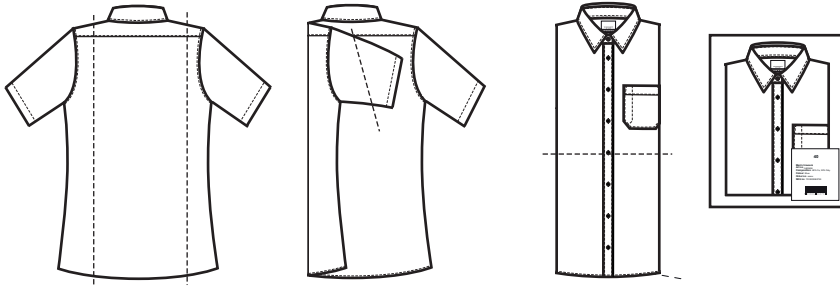
		32	34	36	38	40	42	44	46	48	50	52	54	56
H	Cross shoulder	38	39	40	41	42	43	44	45	46	47	48	49	50
K	Cross back, 15 cm fr CB neck	37	38	39	40	41	42	43	44	45	46	47	48	49
A	Chest, at armhole	91	95	99	103	107	111	115	119	125	131	137	143	149
B	Waist	84	88	92	96	100	104	108	112	118	124	130	136	142
C	Bottom width	95	99	103	107	111	115	119	123	129	135	141	147	153
G	Center Back length	68	69	70	71	72	73	74	75	76	77	78	79	80
	Neckwidth - seam to seam	13,3	13,7	14,1	14,5	14,9	15,3	15,7	16,1	16,5	16,9	17,3	17,7	18,1
	Back neckdrop- HPS to seam	1	1	1	1	1	1	1	1	1	1	1	1	1
	Front neckdrop- HPS to seam	9,4	9,6	9,8	10	10,2	10,4	10,6	10,8	11	11,2	11,4	11,6	11,8
I	Collar length CF-CF	37	38	39	40	41	42	43	44	45	46	47	48	49
J	Collar height at CB	4,5	4,5	4,5	4,5	4,5	4,5	4,5	4,5	4,5	4,5	4,5	4,5	4,5
K	Collar stand height- at CB	3	3	3	3	3	3	3	3	3	3	3	3	3
L	Collar point length- seam to	5,5	5,5	5,5	5,5	5,5	5,5	5,5	5,5	5,5	5,5	5,5	5,5	5,5
M	Collar width- flat collar out	37,5	38,5	39,5	40,5	41,5	42,5	43,5	44,5	45,5	46,5	47,5	48,5	49,5
	Placket width	3	3	3	3	3	3	3	3	3	3	3	3	3
	Bk yoke Plcmt-straight belc	9	9	9	9	9	9	9	9	9	9	9	9	9
	Fr yoke Plcmt-meas along r	3,5	3,5	3,5	3,5	3,5	3,5	3,5	3,5	3,5	3,5	3,5	3,5	3,5
	1/2 armhole at front	18,6	19,4	20,2	21	21,8	22,6	23,4	24,2	25	25,8	26,6	27,4	28,2
D	Sleeve length	16	17	18	19	20	21	22	23	24	25	26	26	26
E	Bicep	34,5	36	37,5	39	40,5	42	43,5	45	47	49	51	53	55
F	Sleeve opening	30	31,5	33	34,5	36	37,5	39	40,5	42,5	44,5	46,5	48,5	51
	Curve difference between	5	5	5	5	5	5	5	5	5	5	5	5	5
	Button distance 1st and 2nd	5	5	5	5	5	5	5	5	5	5	5	5	5
	Button distance centre to c	7,5	7,5	7,5	7,5	7,5	7,75	8	8	8	8	8	8	8
	Pocket placement from HS	19,5	20	20,5	21	21,5	22	22,5	23	23,5	24	24,5	25	25,5



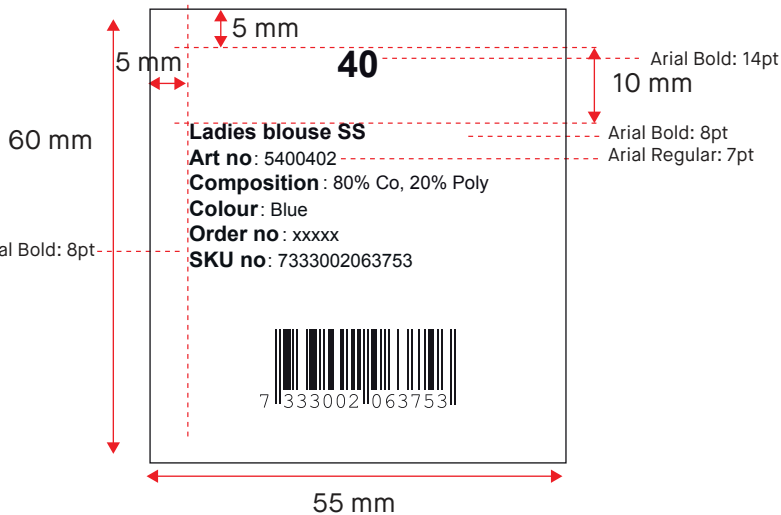
## Packing instructions

### Principles for folding and packing

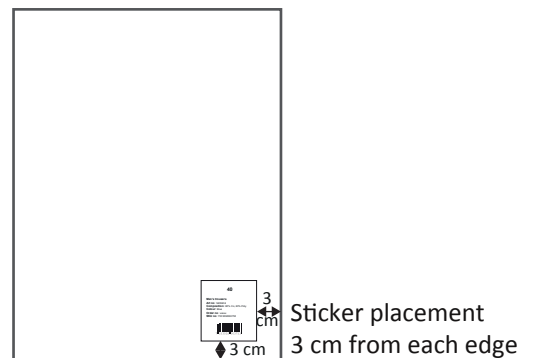
Folding and packing like Eton sample. With shaped cardboard, folded with pins and packed in cellophane bag.



### Paper sticker for poly bag



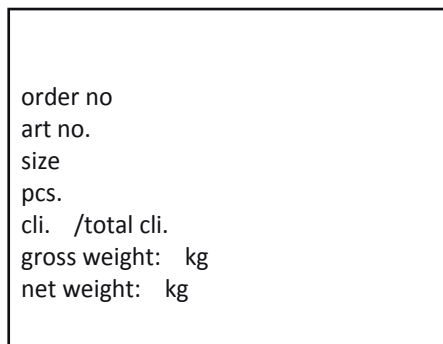
### Placement on PE or PP poly bag



Kindly fill in the correct information for size, model, article no, colour no and order no.  
 Please send an artwork of all labels for approval before printing.

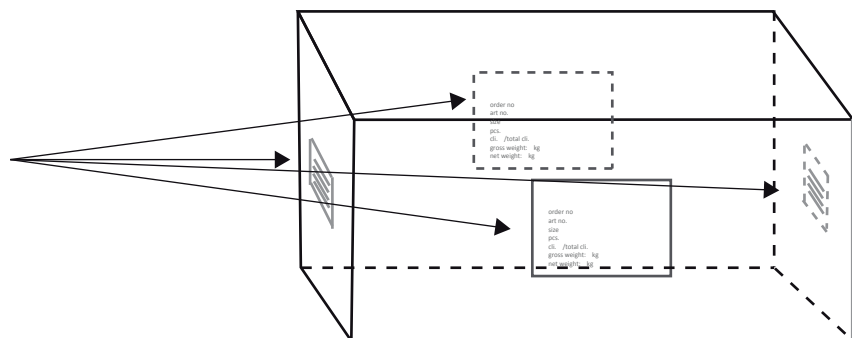
### Carton marks

Use 5 ply automatic corrugated cartons  
 size 20 x 30 cm



### Carton size

size 40 x 60 x 40 cm



Kindly fill in the correct information according to PO.  
 Placement on short ends and front of carton.

technical specification  
Vinmonopolet  
model. ladies blouse SS  
art no. 5400403



ÅS VINMONOPOLET

2021-10-30

## Adjustment log