

technical specification
Vinmonopolet
model. men's shirt SS
art no. 5400401



VINMONOPOLET

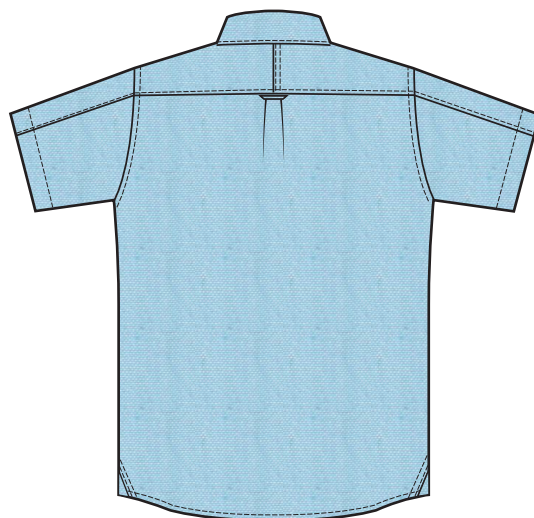
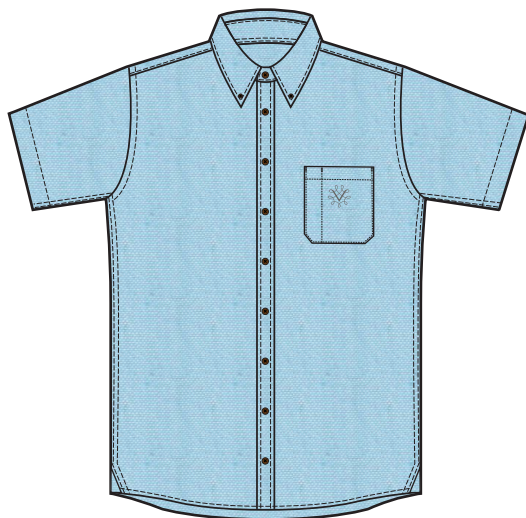
2021-09-01

Article description

Men's shirt short sleeve.
Colour: Light blue (Angel falls)



Light blue
(Angel falls)





Fabric specification

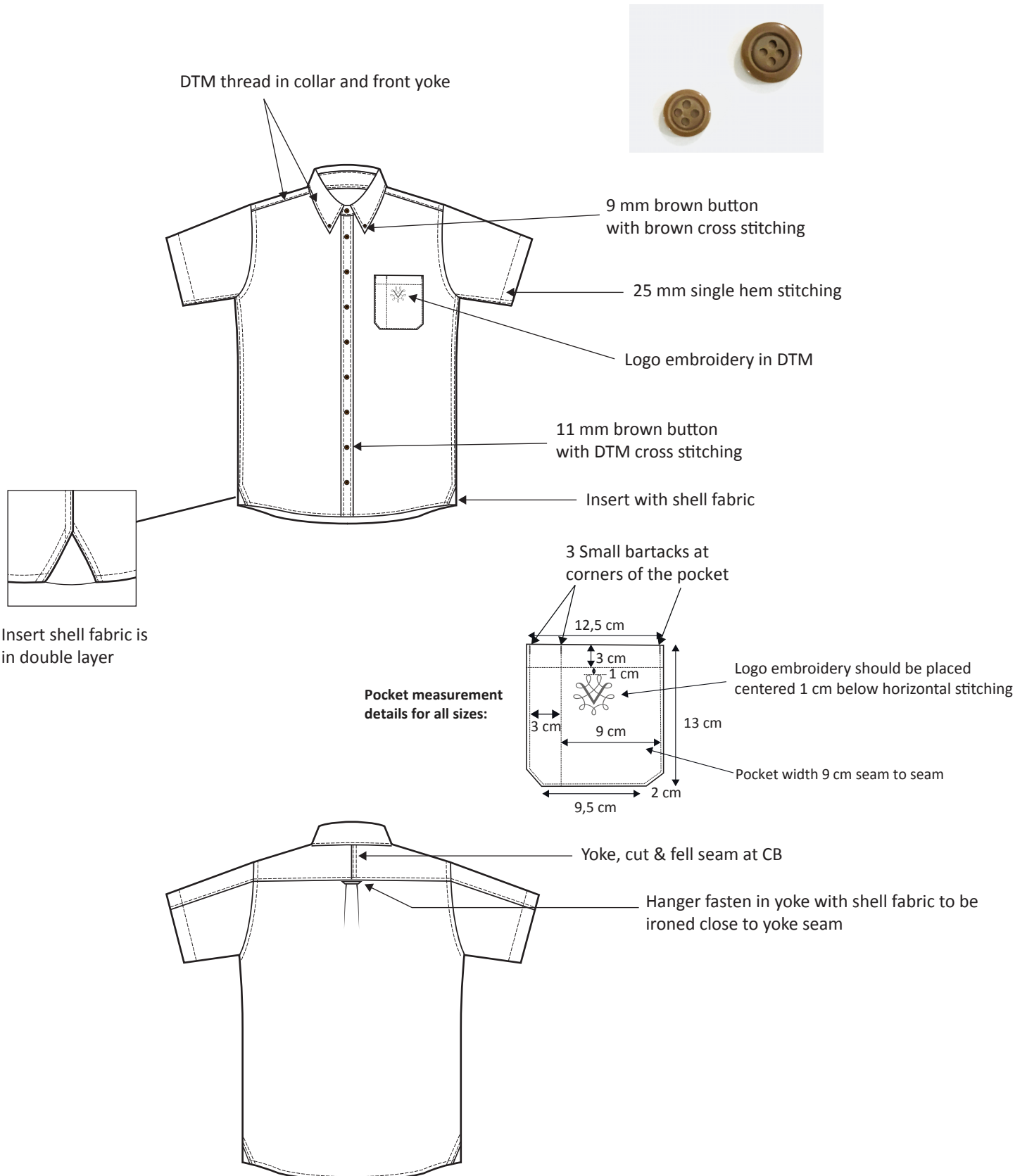
Supplier/Art no:	
Fabric composition:	80% combed cotton, 20% polyester
Fabric construction:	28x28, 84x68, plain weave
Fabric weight:	135 gsm
Colour:	Light blue (Angel falls)
Finish:	Regular finish

Quality requirements:

Test	Test method	Min. requirement
Dimensional stability to washing	EN ISO 3759, EN ISO 6330, EN ISO 25077, 60°C, Tumble dry	Length: max -2% Width: max -2%
Colour fastness to washing	EN ISO 105-CO6, 60°C	Colour change 4 Colour staining 4
Colour fastness to rubbing	EN ISO 105-X12	Dry: 4 Wet: 3
Pilling Resistance, Martindale	EN ISO 12945-2, 7000 rev.	4
Abrasion Resistance, Martindale	EN ISO 12947-2 12 kPa, rev.	12000
Tear Strength	EN ISO 13937-2:2000, N	Warp: 15 Weft: 15
Tensile strength	EN ISO 13934-1:1999, daN	Warp: 26 Weft: 26
Seam Slippage, mm	EN ISO 13936-2	Warp: max 3 Weft: max 3
Certified according to Öko-Tex standard 100		YES



Detail sketch





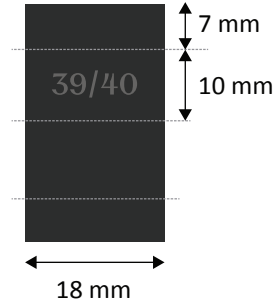
Labels

Main label



Endfolded woven label
Placement inside neck 1 cm below neck
Stitched on both ends only.

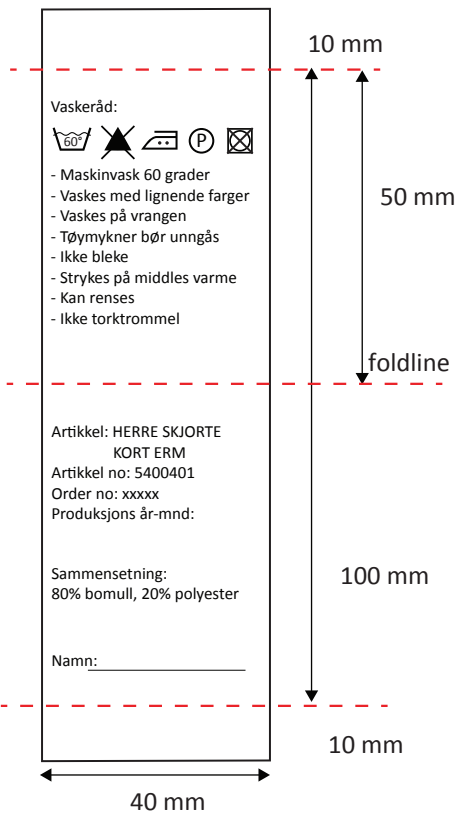
Size label



Size label placement

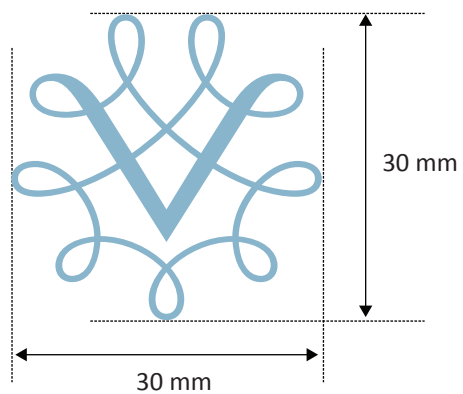
Midfolded woven size label
Placement LHS of main label when wearing.

Care label



Care label in White background
with black printed text
Quality: Woven Satin
Placement on LHS side seam when wearing,
10 cm from bottom.
Fill in correct info acc to PO
Extra buttons (each sizes) attached on care label.

Logo Embroidery:



Logo embroidery in DTM colour,
should be placed centered 1 cm below
horizontal stitching (for all sizes).

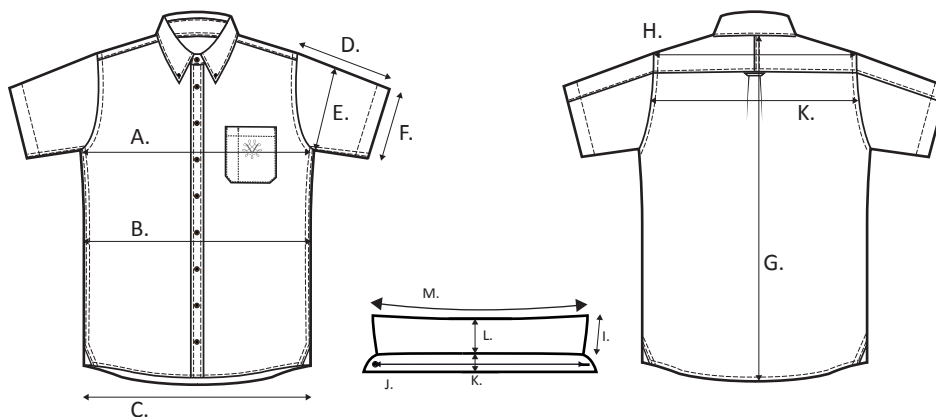


BOM

Content	Description	Placement	Qty
Main fabric	80% combed cotton, 20% polyester		
Contrast fabric			
Insert fabric			
Lining			
Pocket lining			
Interlining 1	Woven fusible 100% cotton interlining, 140 gsm	Collar	
Interlining 2	Woven fusible 100% cotton interlining, 90 gsm	Collar stand	
Interlining 3			
Padding			
Rib 1			
Rib 2			
Tape 1			
Tape 2			
Tape 3			
Piping			
Binding			
Velcro tape 1			
Velcro tape 2			
Elastic			
Reflective tape 1			
Reflective tape 2			
Button 1	11 mm brown button	Front placket	9
Button 2	9 mm brown button	Collar	2
Button 3	Extra buttons (each sizes 11 mm+ 9 mm)	At care label	1+1
Zipper tape			
Zipper 1			
Zipper 2			
Zipper 3			
Puller 1			
Puller 2			
Buckle			
D-rings			
Rivets			
Stopper			
Cord			
Hook and eye			
Main label	End folded woven label	At inside CB neck	1
Size label	Woven mid folded label	LHS of main label	1
Flag label			
Logo badge label			
Logo zippuller			
Care label	Printed woven polyester satin label	On LHS in side seam 10 cm fr bottom	1
Hang loop			
Thread 1	100% core spun polyester thread in DTM	All seams	
Thread 2	100% core spun polyester thread in Brown	Button cross stitching	
Thread 3			
Collar bone			



Measurement list



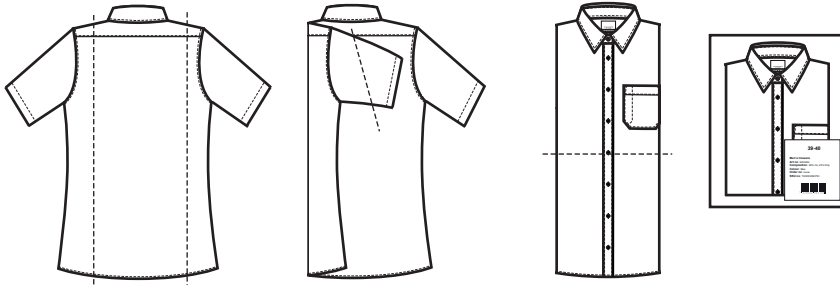
		36	38	40	42	44	46	48	50
		35/36	37/38	39/40	41/42	43/44	45/46	47/48	49/50
H	Cross shoulder	44,5	46	47,5	49	50,5	52	53,5	55
K	Cross back, 15 cm fr CB neck	43	44,5	46	47,5	49	50,5	52	53,5
A	Chest, at armhole	108	112	116	120	126	132	138	144
	Waist placement- from HSP	45	45,5	46	46,5	47	47,5	47,5	47,5
B	Waist	104	108	112	116	122	128	134	140
C	Bottom width	102	106	110	114	120	126	132	138
G	Center Back length	80	81	82	83	84	85	86	87
	1/2 armhole at front	22,6	23,4	24,2	25	25,8	26,6	27,4	28,2
D	Sleeve length	18,75	20,5	22,25	24	24,75	25,5	26,25	27
E	Bicep	41,5	43,5	45,5	47,5	49,5	51,5	53,5	55,5
F	Sleeve opening	36	37	38	39	40	41	42	43
	Back neckdrop- HPS to seam	1	1	1	1	1	1	1	1
	Front neckdrop- HPS to seam	8	8,5	9	9,5	9,75	10	10,25	11
	Placket width	3	3	3	3	3	3	3	3
	Button distance 1st and 2nd	5	5	5	5	5	5	5	5
	Button distance centre to centre	8	8	8	8	8	8	8	8
	Bk yoke Plcmt-straight below CB Nk	10	10	10	10	10	10	10	10
	Shirttail curve Ht Bk-img line to Btm	6	6	6	6	6	6	6	6
	Shirttail curve Ht Frt-img line to Btm	6	6	6	6	6	6	6	6
I	Collar point length- seam to edge	6,5	6,5	6,5	6,5	6,5	6,5	6,5	6,5
J	Collar length CF-CF	37	39	41	43	45	47	49	51
K	Collar stand height- at CB	3,5	3,5	3,5	3,5	3,5	3,5	3,5	3,5
L	Collar height at CB	4,7	4,7	4,7	4,7	4,7	4,7	4,7	4,7
M	Collar width- flat collar outer edge	40	42	44	46	48	50	52	54



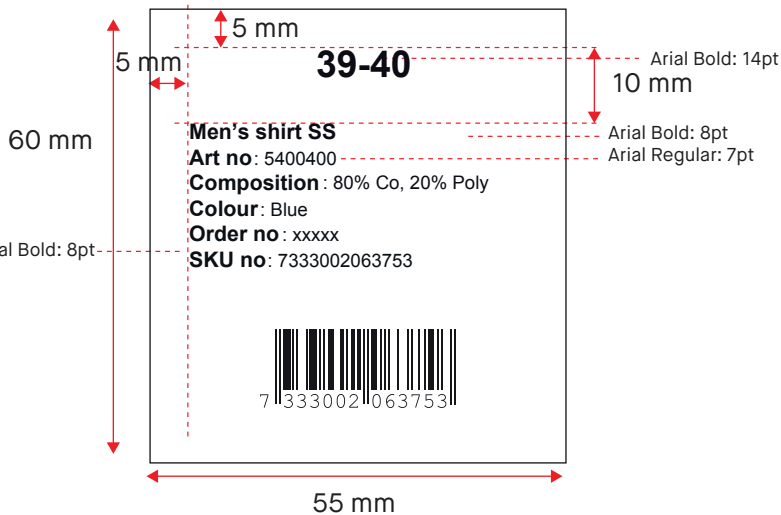
Packing instructions

Principles for folding and packing

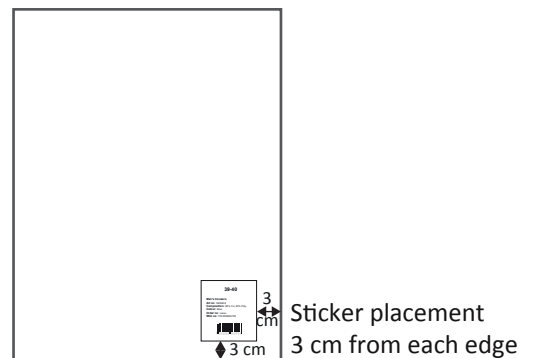
Folding and packing like Eton sample. With shaped cardboard, folded with pins and packed in cellophane bag.



Paper sticker for poly bag



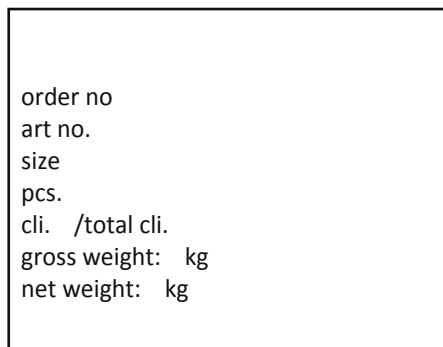
Placement on PE or PP poly bag



Kindly fill in the correct information for size, model, article no, colour no and order no.
 Please send an artwork of all labels for approval before printing.

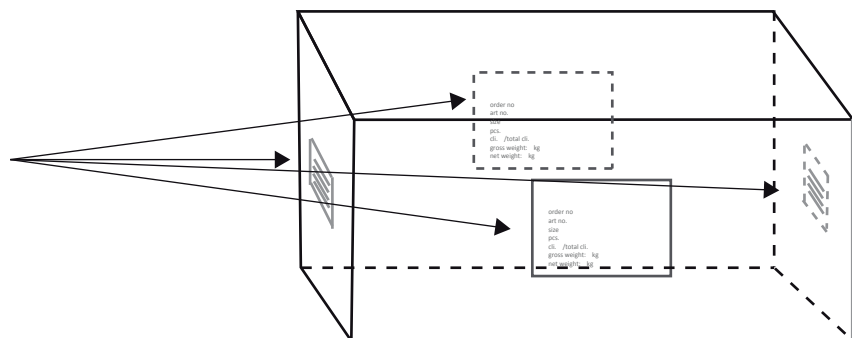
Carton marks

Use 5 ply automatic corrugated cartons
 size 20 x 30 cm



Carton size

size 40 x 60 x 40 cm



Kindly fill in the correct information according to PO.
 Placement on short ends and front of carton.

technical specification
Vinmonopolet
model. men's shirt SS
art no. 5400401



^{AS} VINMONOPOLET

2021-09-01

Adjustment log