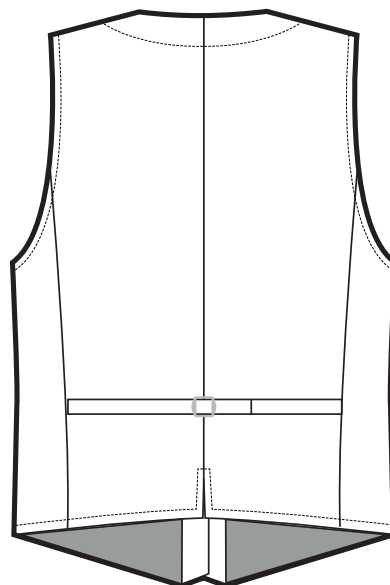
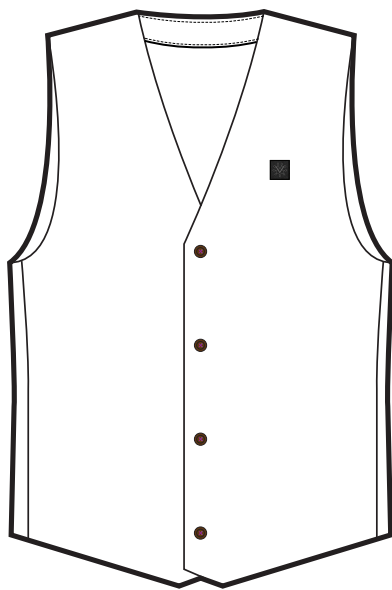


Article description

Men's waistcoat in colour brown melange.
Fabric: 53% polyester, 43% wool, 4% elastane
Lining: 100% polyester taffeta lining in black



Material specification:

| | |
|------------------|--------------------------------------|
| Supplier/Art No: | |
| Composition: | 53% polyester, 43% wool, 4% elastane |
| Construction: | 54/2x54/2, solid dyed |
| Fabric weight: | 205 gsm |
| Colour: | Brown Melange |
| Finish: | No finish |

| | |
|--------------|--|
| Body Lining: | 100% polyester taffeta lining in black |
|--------------|--|

| | |
|----------------|--|
| Pocket Lining: | TC solid dyed poplin in Black colour 65% polyester, 35% cotton, 45x45/110x76 Weight: 105 gsm |
|----------------|--|

Quality requirements for body (taffeta) lining:

| Test | Test method | Min. requirement |
|---------------------------------|---|--------------------------------|
| Dimension stability | ISO 5077:2007/ISO 6330:2012 4N (40 C), Normal flat dry | Warp max 2% Weft max 2% |
| Colour fastness to wash | SS-ISO 105-CO6:2010, A25 (40 C) | Change 4-5 Staining 4 |
| Colour fastness to dry cleaning | SS-EN ISO 105-D01:2010 | Change 4-5 Staining 4 |
| Colour fastness to perspiration | SS-EN ISO 105-E04:2013 | Change 4-5 Staining 4 |
| Colour fastness to rubbing | SS-EN ISO 105-X12:2002 | Dry 4 Wet 3-4 |
| Seam Slippage | ISO 13936-2:2004 Load 60 N | Warp max 3 mm Weft max 3 mm |
| Abrasion | Martindale SS-EN ISO 12947-2, 9 kPa | Min 15000 turns |
| Pilling | Martindale SS-EN ISO 12945-2:2000 | Grade 4/5000 turns |

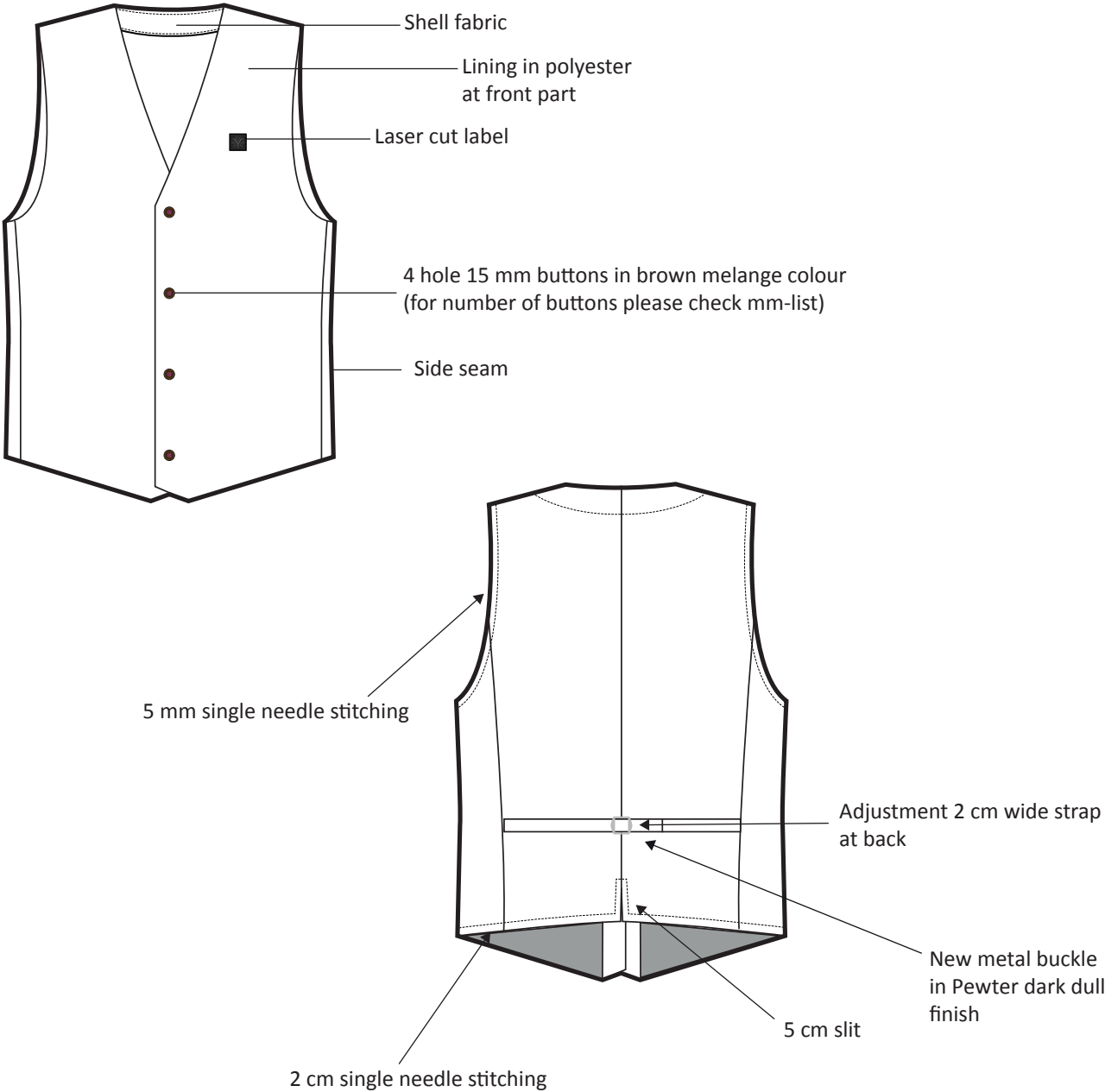
Quality requirements for shell fabric:

| Test | Test method | Min. requirement |
|---|--|----------------------------|
| Dimension stability to wash 40°C 5A and tumble drying | SS-EN ISO 6330, SS-EN ISO 3759, SS-EN 25077 | Warp max 2% Weft max 2% |
| Colour fastness to wash 40°C and dry cleaning; colour change staining | SS-EN ISO 105-CO6 | min 4-5 min 4-5 |
| Colour fastness to rubbing | SS-EN ISO 105-X12 | Wet min 4 Dry min 4-5 |
| Abrasion resistance 12 kPa | SS-EN ISO 12947-2 | min 25000 revs |
| Pilling resistance, Martindale | SS-EN ISO 12945-2, assessment according to EMPA photographics W3 | 7000 varv/min 4 |
| Tear strength, warp and weft N | SS-EN ISO 13937-2:2000 | min 20N |
| Seam Slippage, warp and weft mm | SS-EN ISO 13936-2 | max 1 |
| Tensile strength | SS-EN ISO 13934-1:1999, N | Warp 400 Weft 400 |

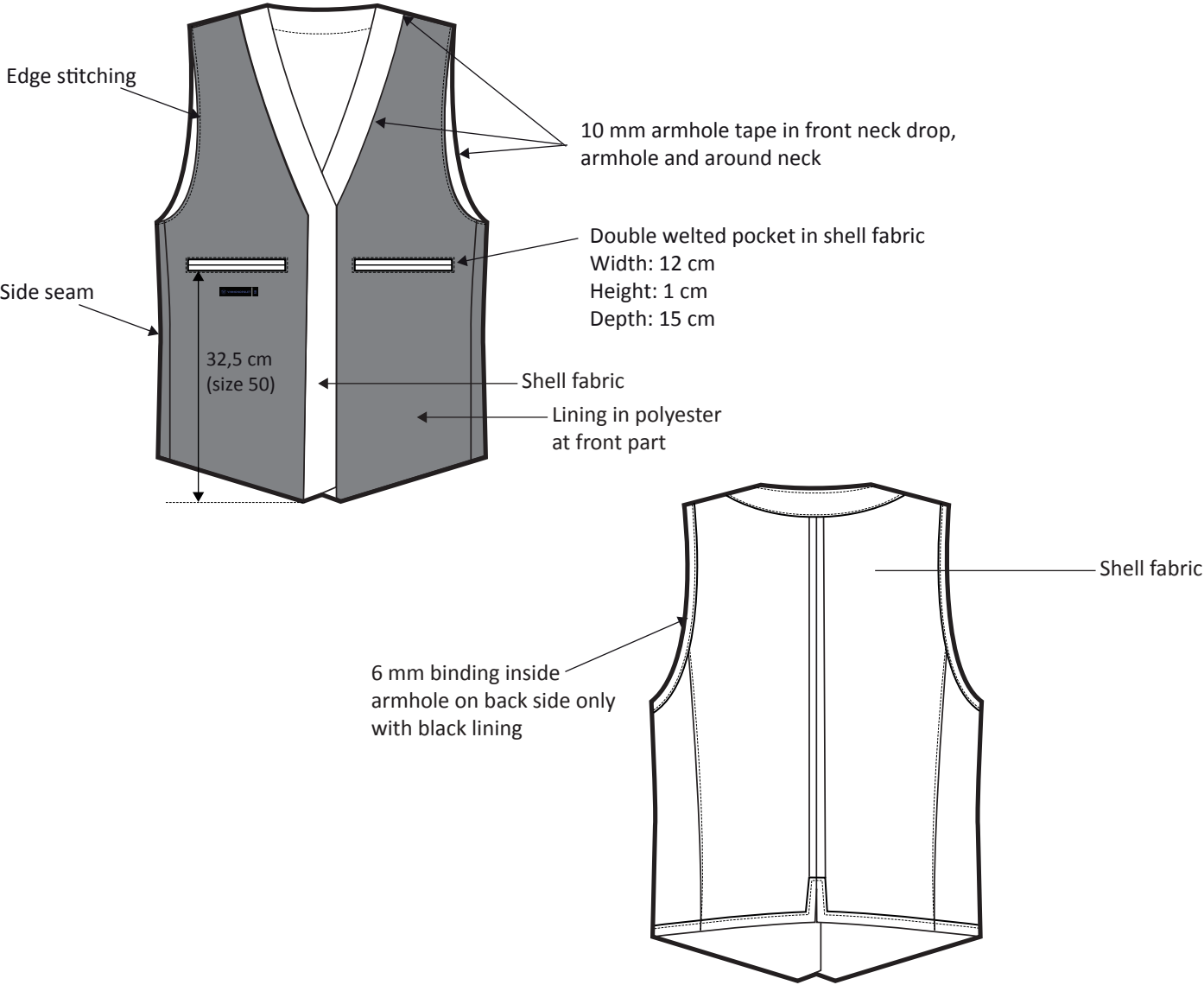
Quality requirements for pocket lining:

| Test | Test method | Min. requirement |
|---------------------------------|--|--------------------------------|
| Dimension stability | ISO 5077:2007/ISO 6330:2012 4N (40 C), Normal flat dry | Warp max 2% Weft max 2% |
| Colour fastness to wash | SS-ISO 105-CO6:2010, A25 (40 C) | Change 4-5 Staining 4 |
| Colour fastness to dry cleaning | SS-EN ISO 105-D01:2010 | Change 4-5 Staining 4 |
| Colour fastness to perspiration | SS-EN ISO 105-E04:2013 | Change 4-5 Staining 4 |
| Colour fastness to rubbing | SS-EN ISO 105-X12:2002 | Dry 4 Wet 3-4 |
| Seam Slippage | ISO 13936-2:2004 Load 60 N | Warp max 3 mm Weft max 3 mm |
| Abrasion | Martindale SS-EN ISO 12947-2, 12 kPa | Min 15000 turns |

Detail sketch



Inside detail sketch



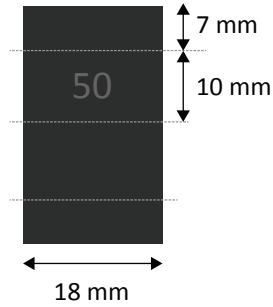
Labels

Main label



Endfolded woven label
Placement centered 3,5 cm below LHS inner pocket
Stitched on both ends only.

Size label

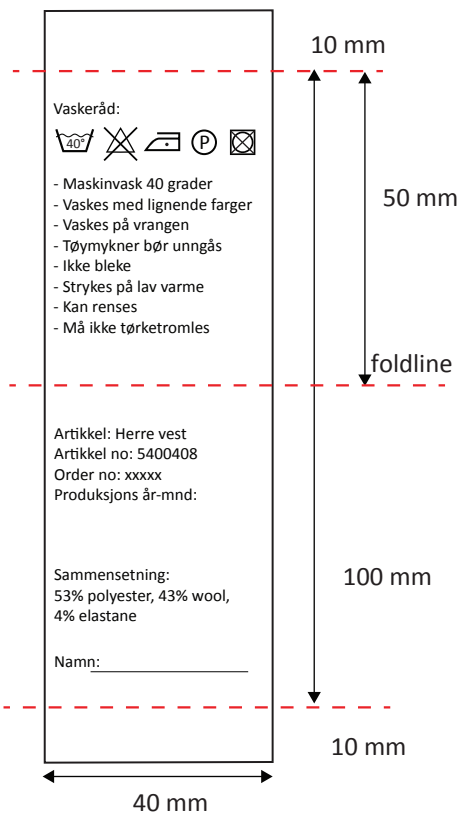


Midfolded woven size label
Placement LHS of main label when wearing.



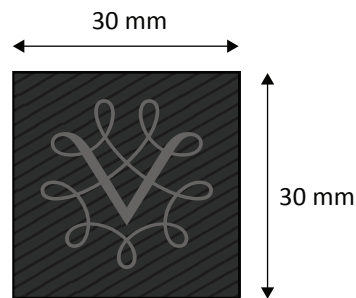
Size label placement

Care label



Care label in White background
with black printed text
Quality: Woven Satin
Placement on inside RHS inner pocket.
Fill in correct info acc to PO
Extra buttons (each sizes) attached on care label.

Laser cut label



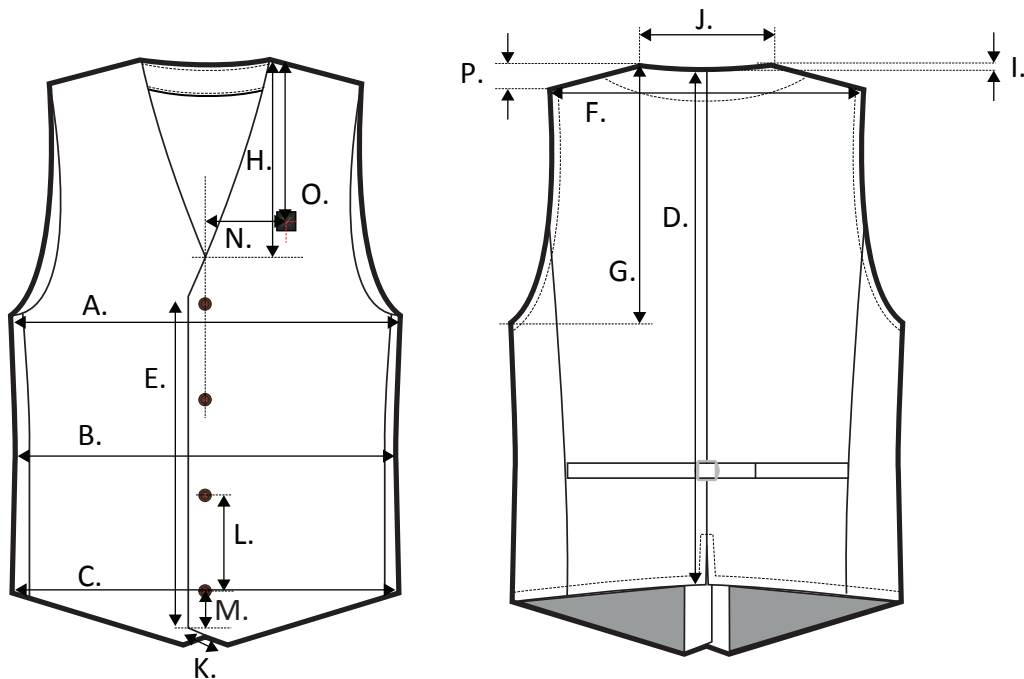
Laser cut label, stitched all around.
Placement at LHS chest 9,5 cm from CF to center of badge
and 23 cm from HPS to center of badge (size 50)
Size: 30x30 mm.

BOM

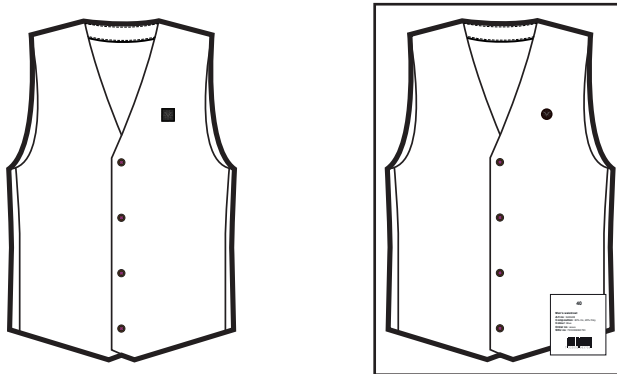
| Content | Description | Placement | Qty |
|-------------------|---|--|-----|
| Main fabric | 53% polyester, 43% wool, 4% elastane | Body | |
| Insert fabric 1 | | | |
| Insert fabric 2 | | | |
| Lining | 100% polyester taffeta lining in black | In front body only | |
| Pocket lining | 65% polyester, 35% cotton black lining | At all Pocket bags | |
| Interlining 1 | PES Non-woven fusible interlining, 55 gsm | Front fusible | |
| Interlining 2 | PA/PES mixed non-woven fusible interlining, 28 gsm | Small parts (inside pocket body area) | |
| Interlining 3 | Mixed non-woven thread fusible interlining, 40 gsm | Warp reinforced fusible/Front | |
| Interlining 4 | Non woven non-fusible fusible interlining, 34 gsm | Pocket velt- Non woven/ Non fuse | |
| Interlining 5 | TC fusible interlining+Poly/cotton woven fusible 40 gsm+105 gsm | Breast pocket fusible+ TC Fuse | |
| Armhole tape | PA/PES mixed Non-woven fusible interlining, 42 gsm | At armhole | |
| Padding | | | |
| Rib 1 | | | |
| Rib 2 | | | |
| Tape 1 | | | |
| Tape 2 | | | |
| Tape 3 | | | |
| Piping | | | |
| Binding | | | |
| Velcro tape 1 | | | |
| Velcro tape 2 | | | |
| Hang tag | | | |
| Reflective tape 1 | | | |
| Reflective tape 2 | | | |
| Button 1 | 15 mm brown melange colour buttons | At front | 5 |
| Button 2 | Extra buttons | At care label | 1 |
| Button 3 | | | |
| Zipper tape | | | |
| Zipper 1 | | | |
| Zipper 2 | | | |
| Zipper 3 | | | |
| Puller 1 | | | |
| Puller 2 | | | |
| Buckle | Metal buckle in pewter dark dull finish | At back strap | 1 |
| D-rings | | | |
| Rivets | | | |
| Stopper | | | |
| Cord | | | |
| Hook and eye | | | |
| Main label | Endfolded woven label | Centered 3,5 cm below LHS inner pocket | 1 |
| Size Label | Midfolded woven size label | LHS of main label | 1 |
| Thin label | | | |
| Logo label | Laser cut label | On LHS chest | 1 |
| Logo zippuller | | | |
| Care label | Printed woven satin label | On RHS inside inner pocket | 1 |
| Hang loop | | | |
| Thread 1 | 100% polyester core-spun thread in DTM | | |
| Thread 2 | | | |
| Thread 3 | | | |

Measurement list

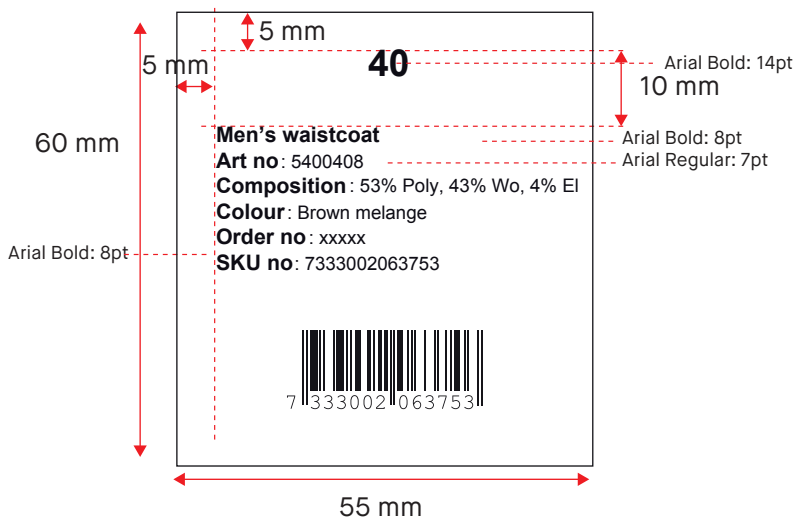
| | Size normal | C44 | C46 | C48 | C50 | C52 | C54 | C56 | C58 | C60 | C62 | C64 | C66 |
|----|------------------------------------|------|------|------|------|------|------|------|------|------|------|------|------|
| A. | Chest | 97 | 101 | 105 | 109 | 113 | 117 | 121 | 125 | 129 | 133 | 137 | 141 |
| B. | Waist | 91 | 95 | 99 | 103 | 107 | 111 | 115 | 119 | 123 | 127 | 131 | 135 |
| C. | Bottom | 94 | 98 | 102 | 106 | 110 | 114 | 118 | 122 | 126 | 130 | 134 | 138 |
| D. | CBL | 57 | 58 | 59 | 60 | 61 | 62 | 63 | 64 | 65 | 66 | 67 | 68 |
| E. | CFL | 32,5 | 33 | 33,5 | 34 | 34,5 | 35 | 35,5 | 36 | 36,5 | 37 | 37,5 | 38 |
| F. | Shoulder to shoulder | 35,5 | 37 | 38,5 | 40 | 41,5 | 43 | 44,5 | 46 | 47,5 | 49 | 50,5 | 52 |
| G. | Scye depth fr HPS | 28,5 | 29 | 29,5 | 30 | 30,5 | 31 | 31,5 | 32 | 32,5 | 33 | 33,5 | 34 |
| H. | Front neck drop | 24,5 | 25 | 25,5 | 26 | 26,5 | 27 | 27,5 | 28 | 28,5 | 29 | 29,5 | 30 |
| I. | Back neck drop | 1,5 | 1,5 | 1,5 | 1,5 | 1,5 | 1,5 | 1,5 | 1,5 | 1,5 | 1,5 | 1,5 | 1,5 |
| J. | Neck width | 17 | 17,5 | 18 | 18,5 | 19 | 19,5 | 20 | 20,5 | 21 | 21,5 | 22 | 22,5 |
| K. | Corner length | 6,8 | 6,8 | 6,8 | 6,8 | 6,8 | 6,8 | 6,8 | 6,8 | 6,8 | 6,8 | 6,8 | 6,8 |
| L. | Button distance | | | | 10,5 | | | | | | | | |
| M. | Placement of last button fr corner | 2 | 2 | 2 | 2 | 2 | 2 | 2 | 2 | 2 | 2 | 2 | 2 |
| N. | Badge placement fr CF to center | 9 | 9 | 9,5 | 9,5 | 9,5 | 10 | 10 | 10,5 | 10,5 | 11 | 11 | 11,5 |
| O. | Badge placement fr HPS to center | 22,5 | 22,5 | 23 | 23 | 23 | 23,5 | 23,5 | 24 | 24 | 24,5 | 24,5 | 25 |
| P. | Shoulder slope | 4 | 4 | 4 | 4 | 4 | 4 | 4 | 4 | 4 | 4 | 4 | 4 |
| Q. | Number of buttons | 4 | 4 | 4 | 4 | 4 | 4 | 4 | 5 | 5 | 5 | 5 | 5 |



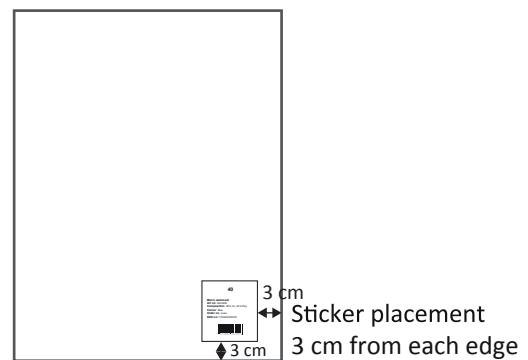
Principle for folding (adjust when necessary)



Paper sticker for poly bag



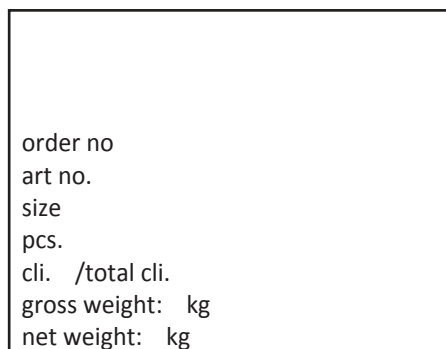
Placement on PE or PP poly bag



Kindly fill in the correct information for size, model, article no, colour no and order no.
 Please send an artwork of all labels for approval before printing.

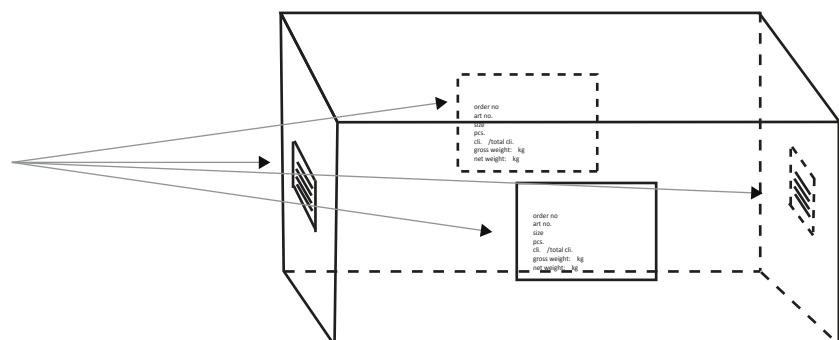
Carton print

Use 5 ply automatic corugated cartons
 size 20 x 30 cm



Carton size

size 60 x 40 x 40 cm (Please adjust the height as per the requirements)



Kindly fill in the correct information according to PO.
 Placement on short ends and front of carton.

Adjustment log