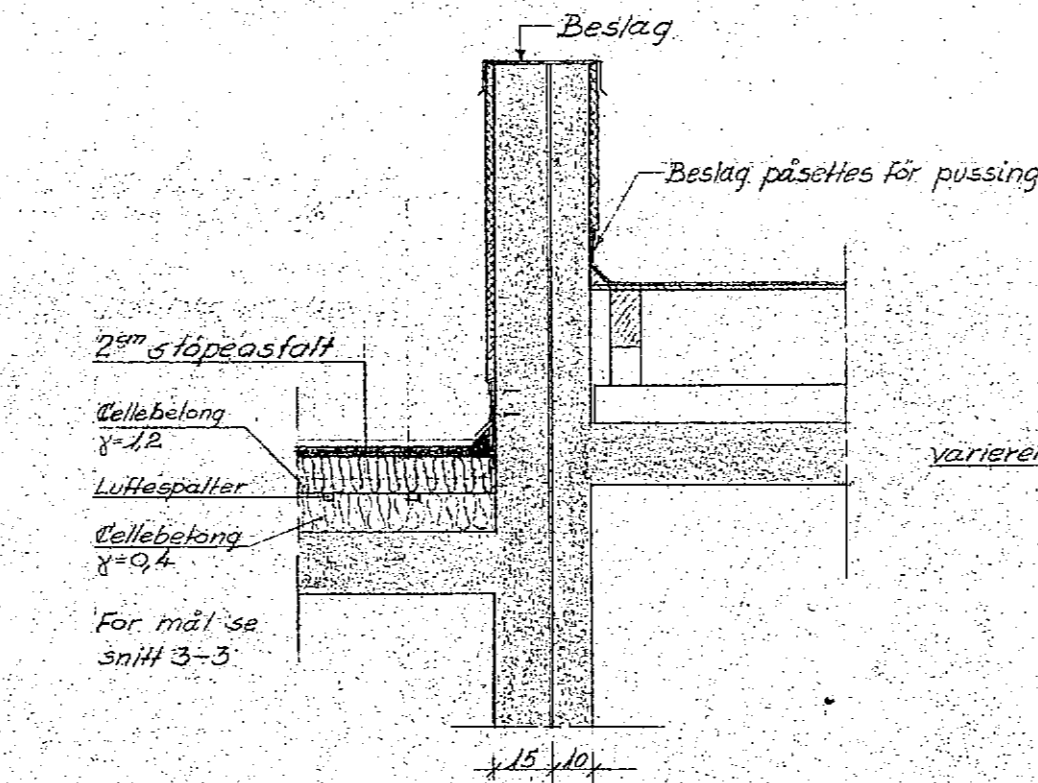
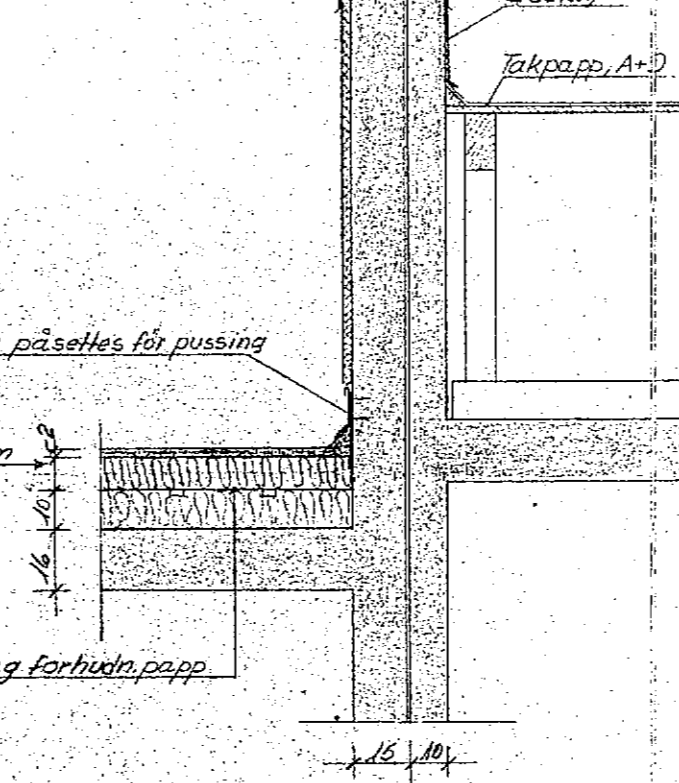


Snitt D-D
M=1:30

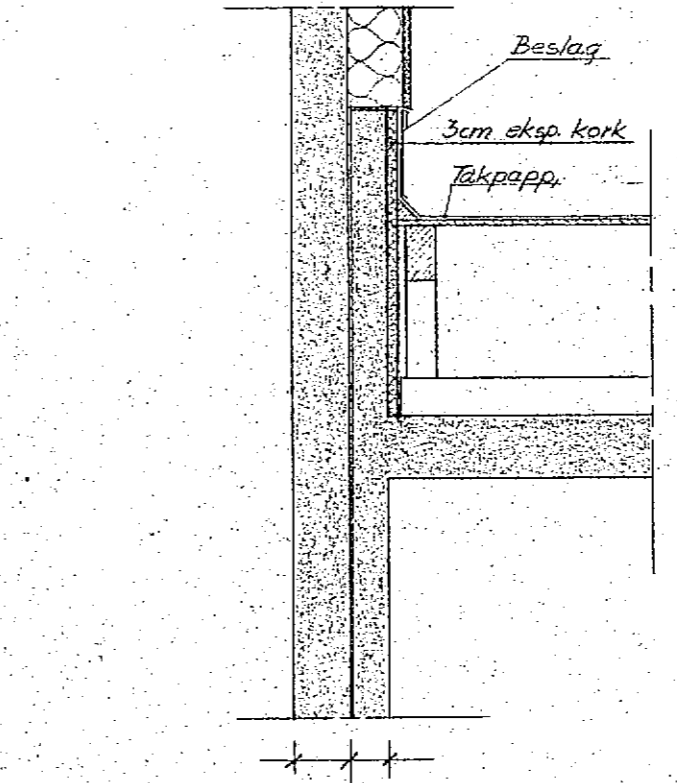
Snitt 2-2
M=1:20



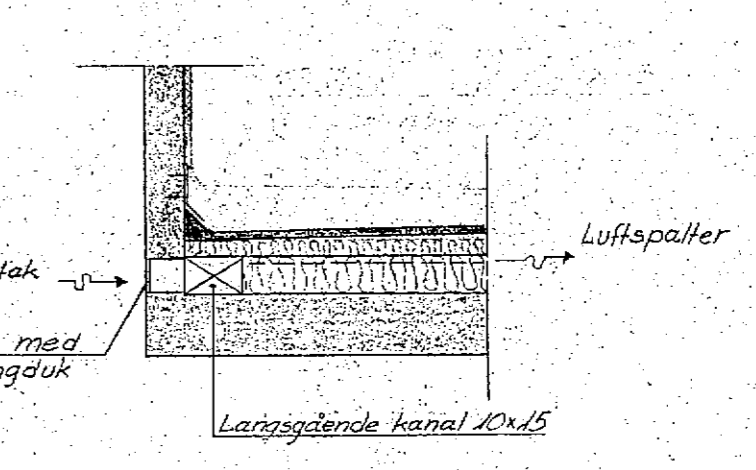
Snitt 3-3
M=1:20



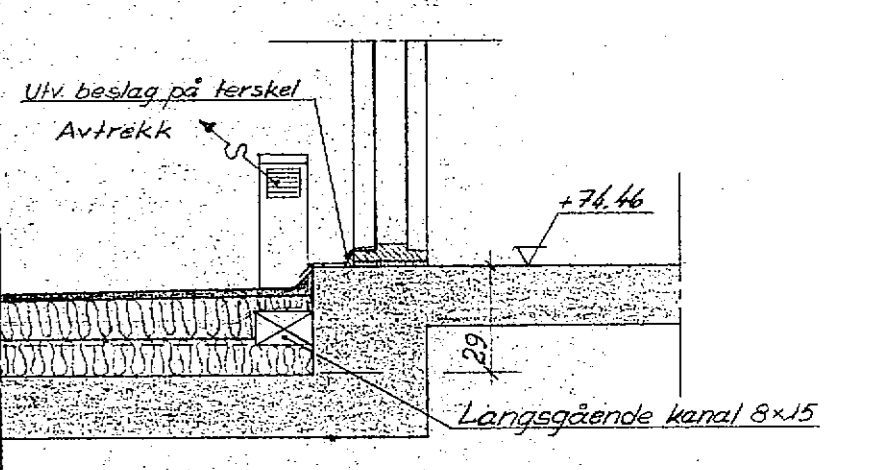
Snitt 4-4
M=1:20



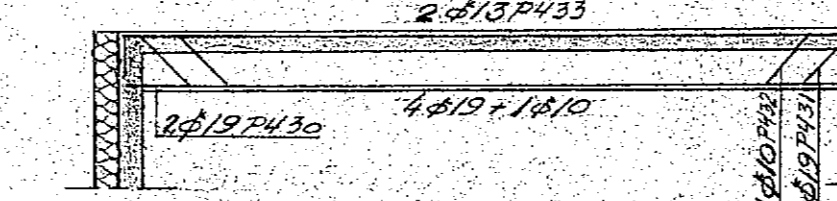
Detalj 5
M=1:20



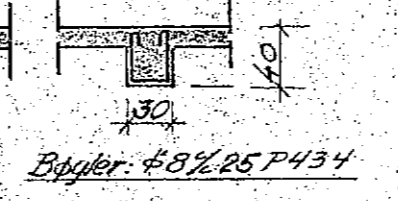
Detalj 6
M=1:20



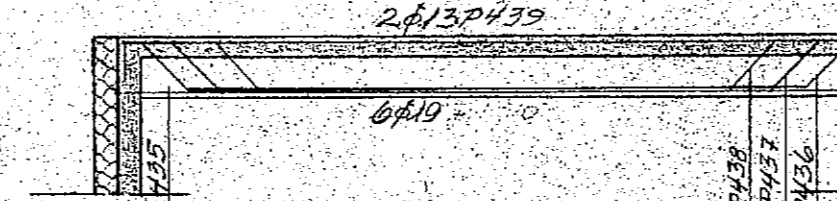
D50-D51: 1/2 = 30/40



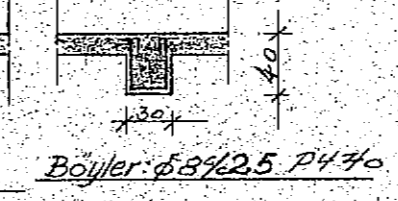
Snitt D50-D51



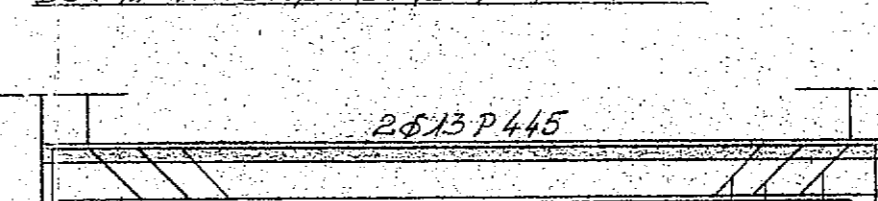
D52-D53: 1/2 = 30/40



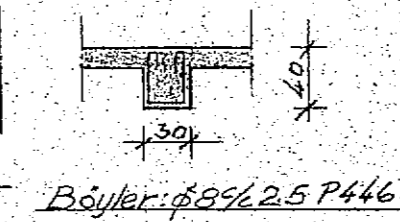
Snitt D52-D53



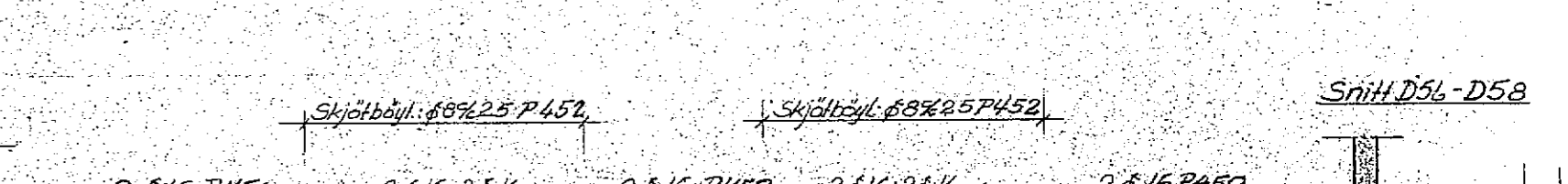
D54-D55: 1/2 = 30/40



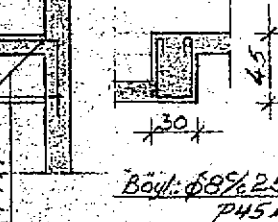
Snitt D54-D55



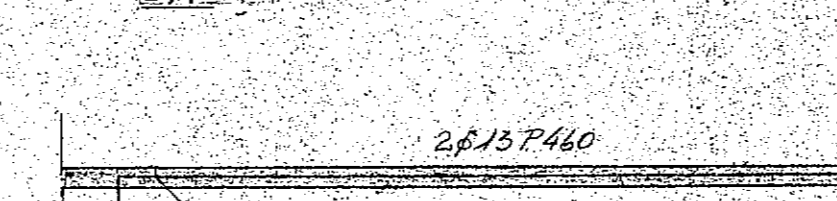
D56-D57-D58: 1/2 = 30/40



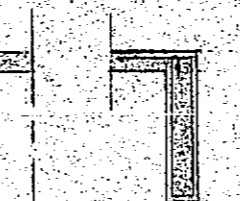
Snitt D56-D58



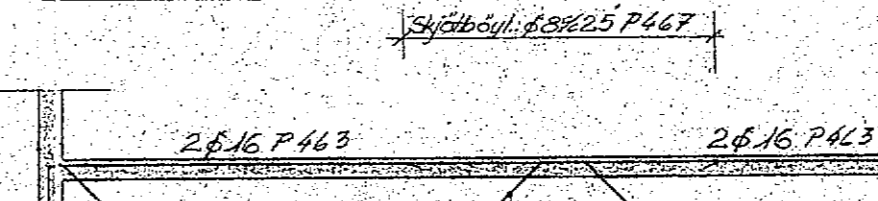
D60: 1/2 = 30/40



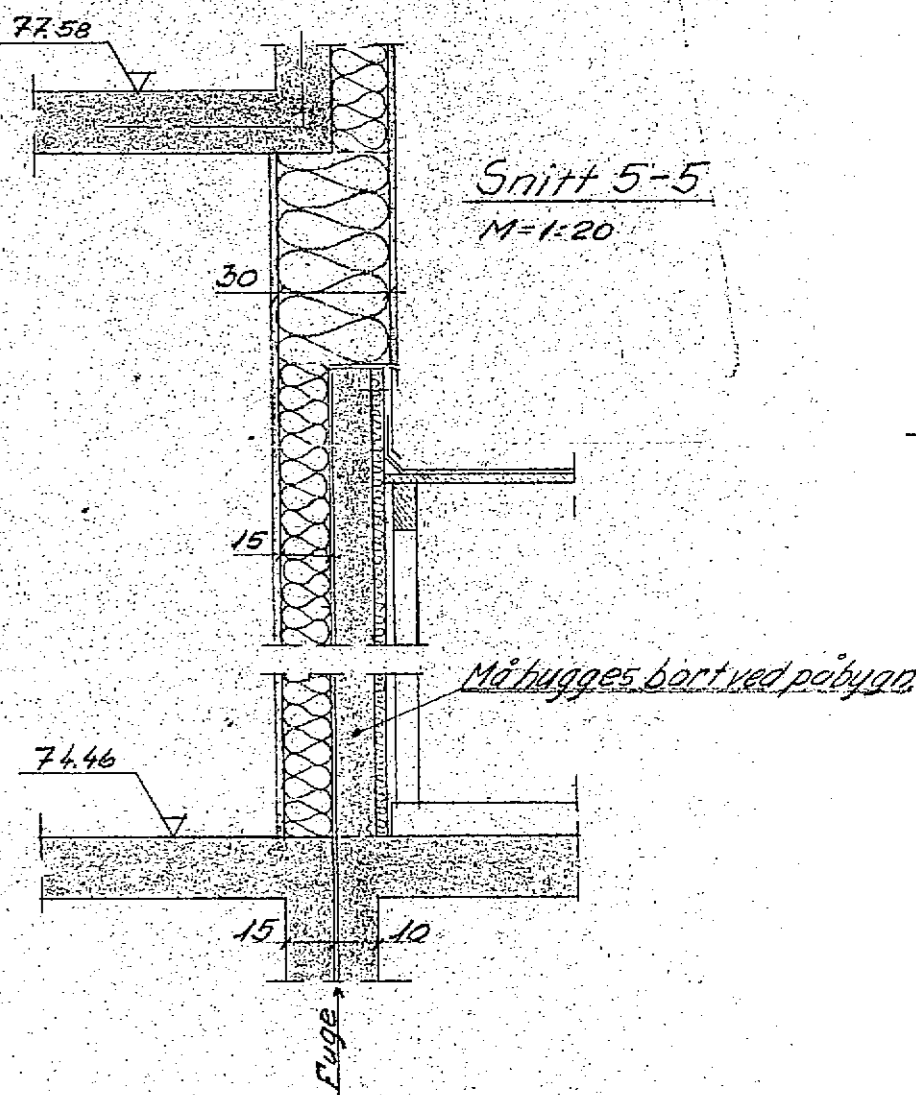
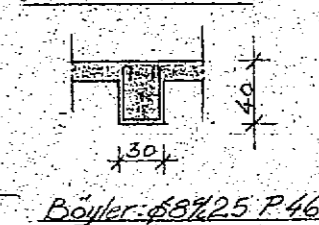
Snitt D60-D61



D62-D63: 1/2 = 30/40

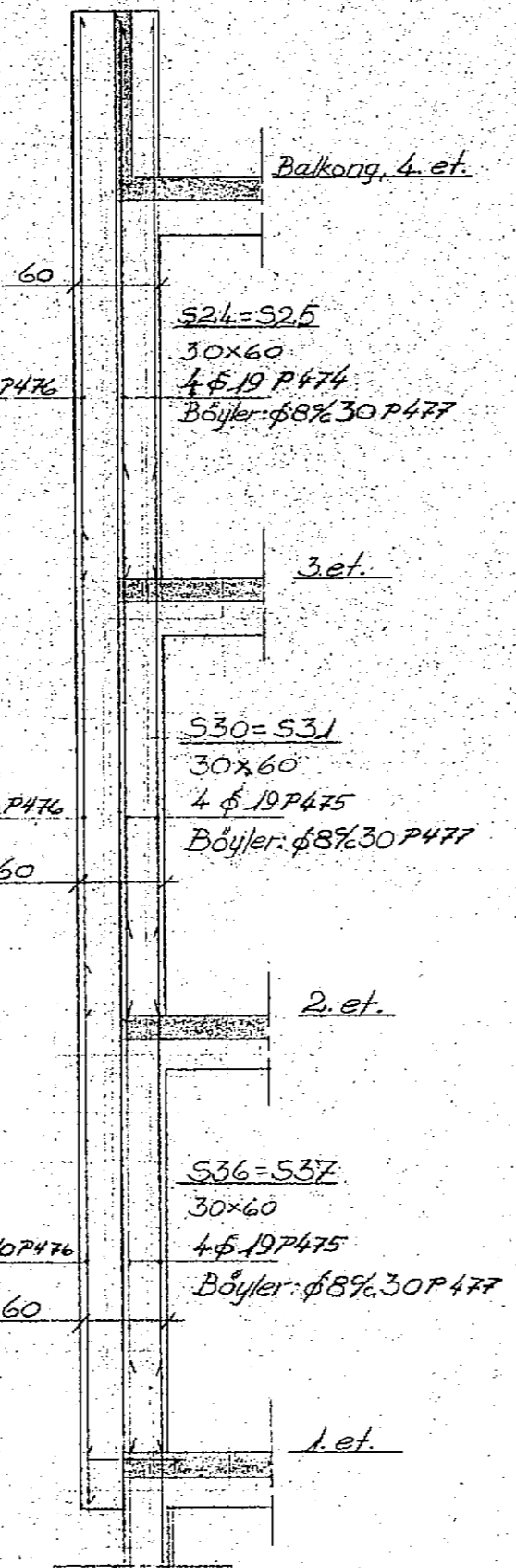


Snitt D62-D63

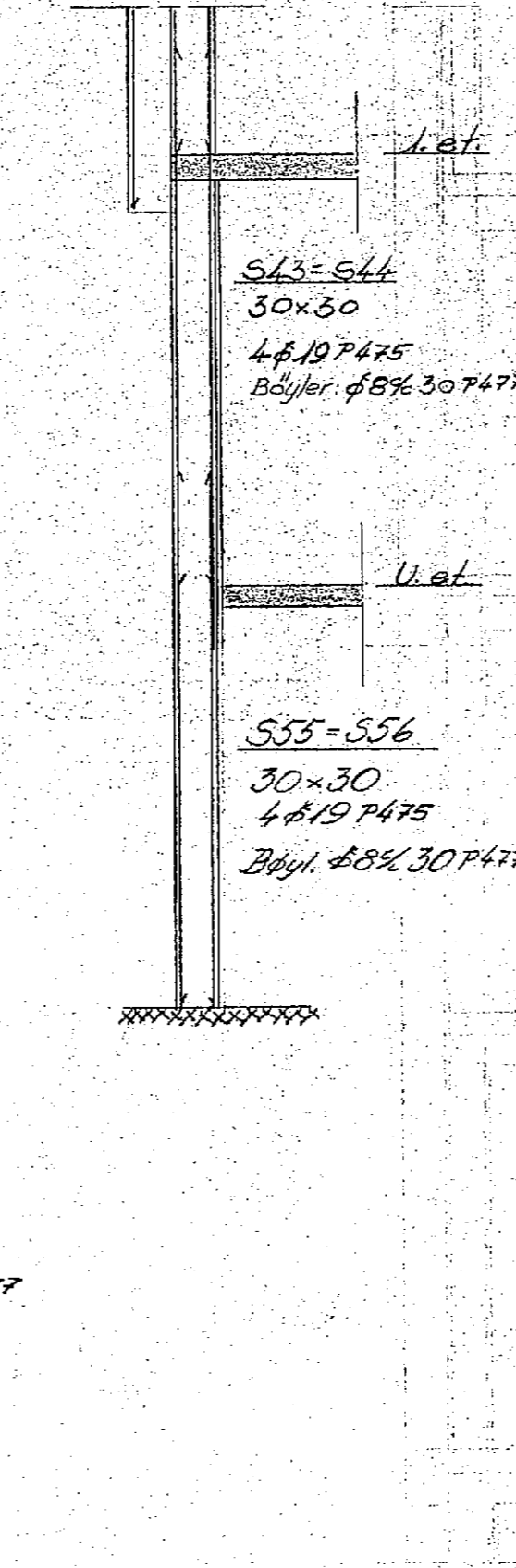


Snitt 5-5
M=1:20

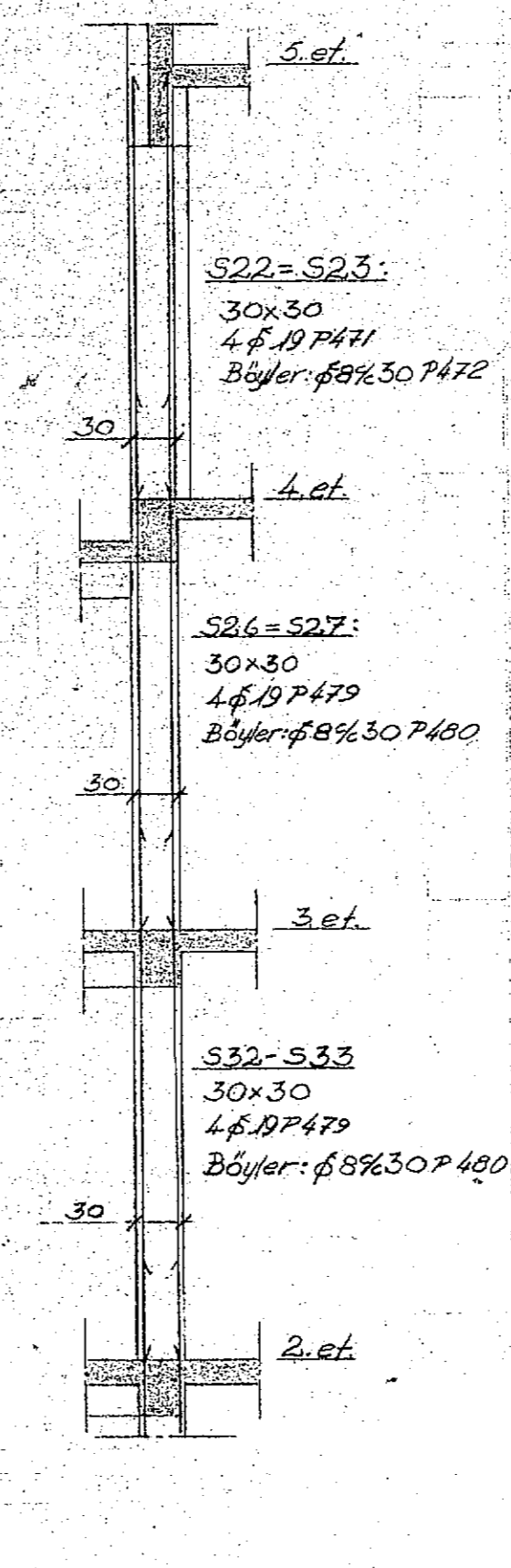
Ytterveggssäyler



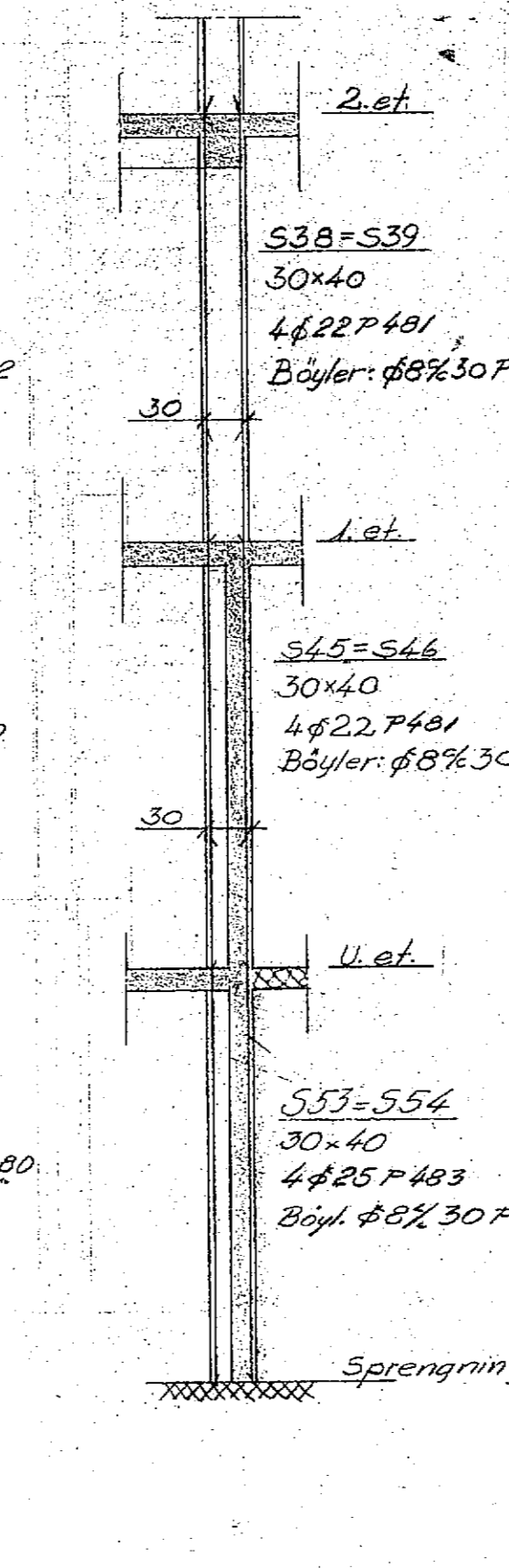
Ytterveggssäyler



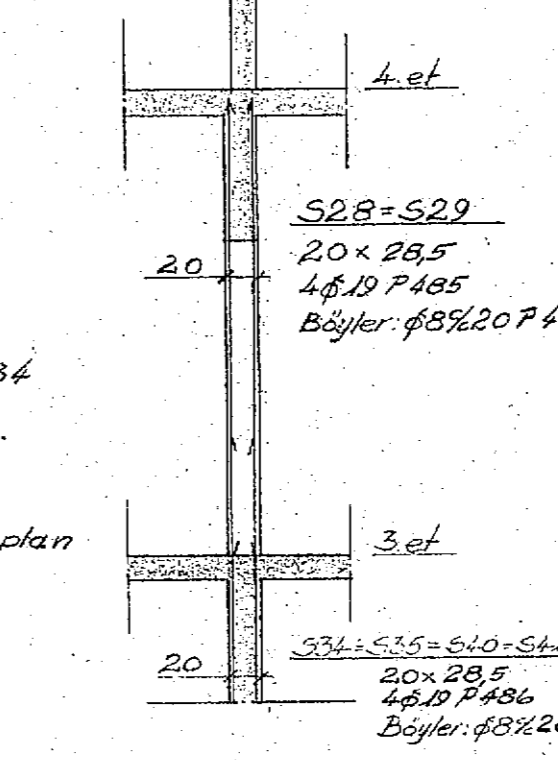
Innr. søyler



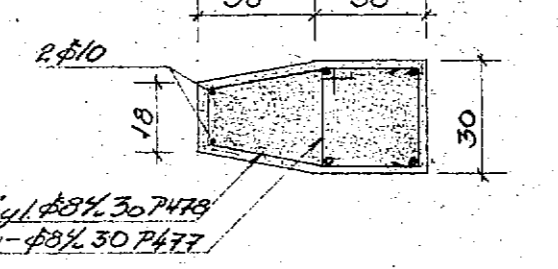
Innr. søyler



Søyler ved trapperom



Snitt av ytterveggssäyler M=1:20



Anmerkninger:
Til all armering benyttes kamstål K₆ 40
Armerede konstruksjoner støpes i betong-
kvalitet B-200, se forøvrig våre plantegninger

MALESTOKK 1:50 1:20	AARUM & BERGE M.N.E.F. OG M.E.K.F. BYGGTEKNIKE KONSULENTER
KORRIGERT	Porsgrunn Luth. Sykehus
25-8-58 5-11-58 6-12-58	Midtbygg Snitt med detaljer
PORSGRUNN 23/58	TEGN. NR. 28-58

For S47 og S48 anvendes stålarm L 8 P488