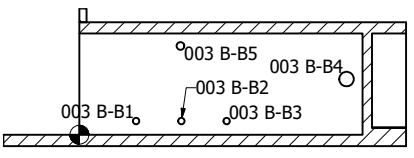


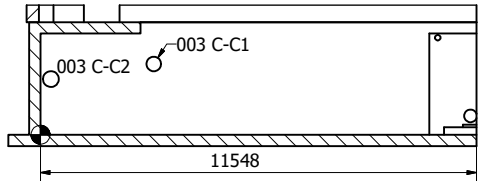
Snitt 1,85m over kjellergulv (1 : 100)

B-B (1 : 100)



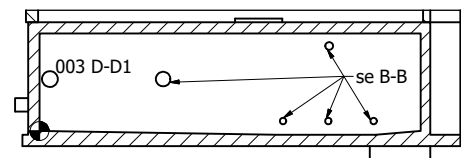
HOLE TABLE			
HOLE	XDIM	YDIM	DESCRIPTION
003 B-B1	1500	363	Ø170 -250 DEEP
003 B-B2	2700	363	Ø170 -250 DEEP
003 B-B3	3900	363	Ø170 -250 DEEP
003 B-B4	7075	1475	Ø385 -250 DEEP
003 B-B5	2677	2352	Ø205 -250 DEEP

C-C (1 : 100)



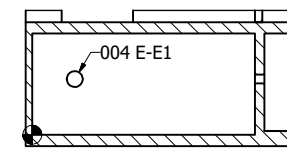
HOLE TABLE			
HOLE	XDIM	YDIM	DESCRIPTION
003 C-C1	3000	1875	Ø385 -250 DEEP
003 C-C2	275	1475	Ø420 -250 DEEP

D-D (1 : 100)



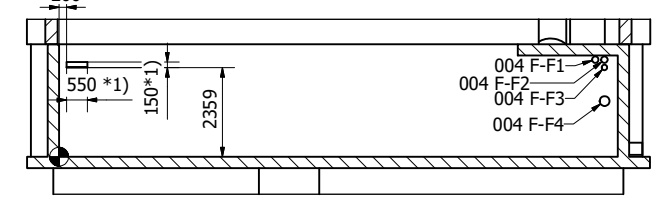
HOLE TABLE			
HOLE	XDIM	YDIM	DESCRIPTION
003 D-D1	275	1375	Ø420 -250 DEEP

E-E (1 : 100)



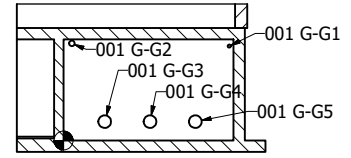
HOLE TABLE			
HOLE	XDIM	YDIM	DESCRIPTION
004 E-E1	1125	1475	Ø420 -850 DEEP

F-F (1 : 100)



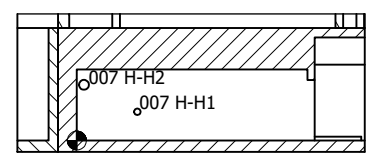
HOLE TABLE			
HOLE	XDIM	YDIM	DESCRIPTION
004 F-F4	14450	1475	Ø260 -250 DEEP
004 F-F3	14445	2367	Ø145 -250 DEEP
004 F-F1	14203	2572	Ø170 -250 DEEP
004 F-F2	14445	2572	Ø170 -250 DEEP

G-G (1 : 100)



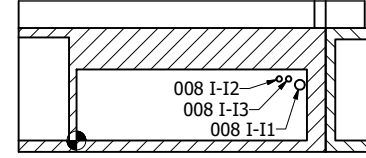
HOLE TABLE			
HOLE	XDIM	YDIM	DESCRIPTION
001 G-G3	1090	500	Ø335 -250 DEEP
001 G-G4	2290	500	Ø335 -250 DEEP
001 G-G5	3490	500	Ø335 -250 DEEP
001 G-G1	4390	2500	Ø80 -250 DEEP
001 G-G2	221	2572	Ø145 -250 DEEP

H-H (1 : 100)



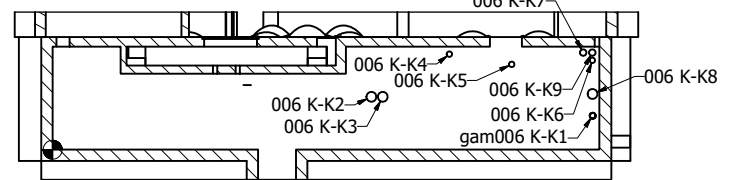
HOLE TABLE			
HOLE	XDIM	YDIM	DESCRIPTION
007 H-H1	1600	761	Ø170 -250 DEEP
007 H-H2	187	1475	Ø260 -250 DEEP

I-I (1 : 100)



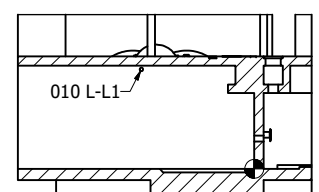
HOLE TABLE			
HOLE	XDIM	YDIM	DESCRIPTION
008 I-I1	5918	1475	Ø260 -200 DEEP
008 I-I2	5370	1630	Ø145 -200 DEEP
008 I-I3	5620	1630	Ø145 -200 DEEP

K-K (1 : 100)



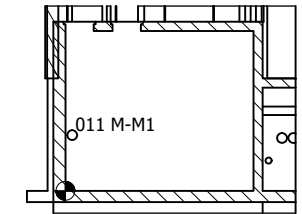
HOLE TABLE			
HOLE	XDIM	YDIM	DESCRIPTION
gam006 K-K1	14305	900	Ø160 -250 DEEP
006 K-K2	8443	1400	Ø260 -250 DEEP
006 K-K3	8743	1400	Ø260 -250 DEEP
006 K-K8	14300	1475	Ø260 -250 DEEP
006 K-K5	12160	2260	Ø145 -250 DEEP
006 K-K6	14295	2367	Ø145 -250 DEEP
006 K-K4	10508	2530	Ø145 -250 DEEP
006 K-K7	14053	2572	Ø170 -250 DEEP
006 K-K9	14295	2572	Ø170 -250 DEEP

L-L (1 : 100)



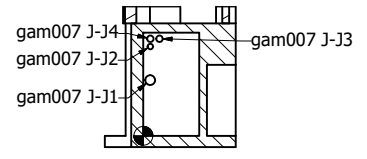
HOLE TABLE			
HOLE	XDIM	YDIM	DESCRIPTION
010 L-L1	-2990	2635	Ø90 -258 DEEP

M-M (1 : 100)



HOLE TABLE			
HOLE	XDIM	YDIM	DESCRIPTION
011 M-M1	180	1475	Ø260 -300 DEEP

J-J (1 : 100)



HOLE TABLE			
HOLE	XDIM	YDIM	DESCRIPTION
gam007 J-J1	180	1475	Ø260 -200 DEEP
gam007 J-J2	185	2367	Ø145 -200 DEEP
gam007 J-J3	427	2572	Ø170 -200 DEEP
gam007 J-J4	185	2572	Ø170 -200 DEEP

Med forbehold om mindre endringer på antall, plassering og størrelse i forbindelse med videre detaljprosjektering

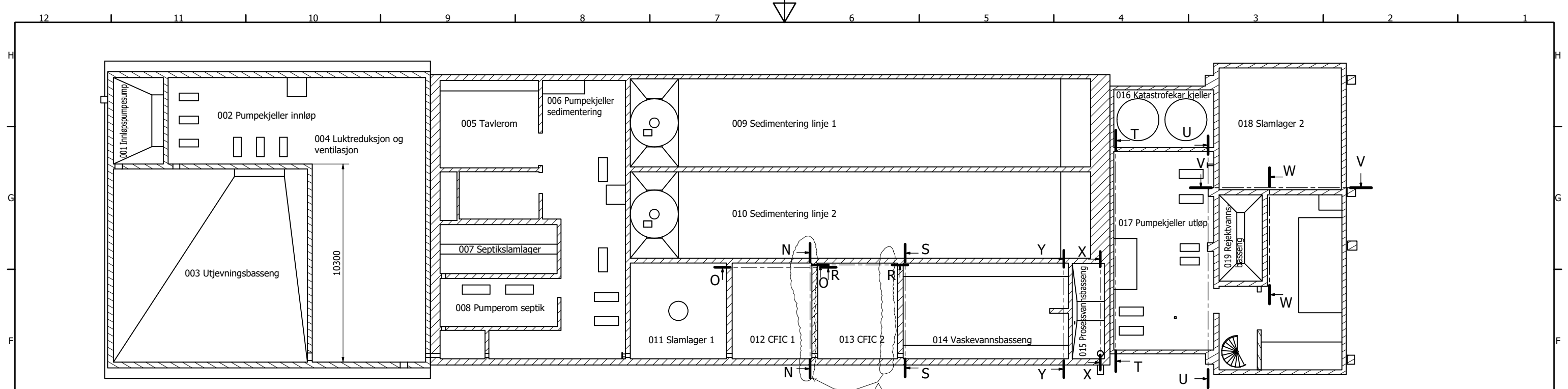
*1) Gjennomføringer for kabelbruer er kun til indikasjon. Kartlegges av bygg. Noen eksisterende gjennomføringer brukes for nye kabler. Disse er ikke tegnet inn.

Toleranse for plassering av hull/ kjerneboringer: Toleranseklasse 4 (Tabell 2 i NS 3420)
Toleranser for hull diameter iht. vedlagt LinkSeal-tabell

Nye hull og hull med endret størrelse er merket med Rev.nr. Plassering av de fleste hull er endret etter at BWT-bygningsmodell er tilpasset GM og derfor ikke angitt per hull.

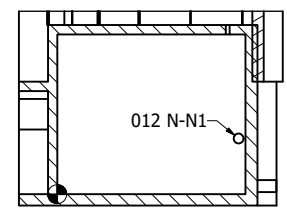
2*) "004 Luktreduksjon og ventilasjon" utgått romnummer?

E	KER	Sheet 1: 003 C-C1 økt fra ø260 til ø385; Sheet 2: snitt N-N flyttet; Sheet 3: 116 AA-AA4 flyttet; Sheet 4: Hull CFIC-tak oppdatert til BIMSync sak #147; Nye hull 108a BB-BB25-32	26/01/2021	LB
D	KER	Tegningen oppdatert etter tilpassning BWT-bygningsmodell til GM uke 47-2020. Øvrige endringer iht. endringslog for kjerneboringer	15/01/2021	LB
C	KER	Lagt til hull til instrumentering. Øvrige endringer som angitt.	03.07.2020	LB
B	KER	Lagt til gjennomføringer for kabelbruer	19.06.2020	LB
A	KER	For byggprosjektering	18.06.2020	LB
REV CHANGED		DESCRIPTION	DATE	APPR.
Designed by	Checked by	Approved by	Date	Date
KER			14/06/2020	A1
BIOWATER TECHNOLOGY		Kjerneboring og gjennomføringer		Sheet
MALMBERG		1072359		1 / 4
Edition		E		



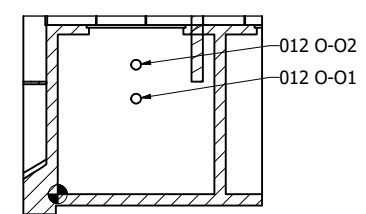
Snitt 2,7m over kjellergulv (1 : 100)

N-N (1 : 100)



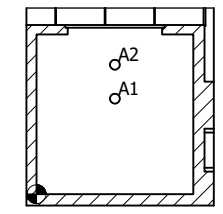
HOLE TABLE			
HOLE	XDIM	YDIM	DESCRIPTION
012 N-N1	4802	1475	Ø260 -300 DEEP

O-O (1 : 100)



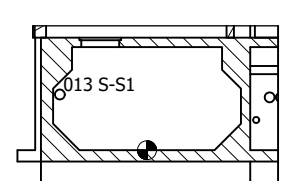
HOLE TABLE			
HOLE	XDIM	YDIM	DESCRIPTION
012 O-O1	2075	2530	Ø260 -250 DEEP
012 O-O2	2075	3430	Ø260 -250 DEEP

R-R (1 : 100)



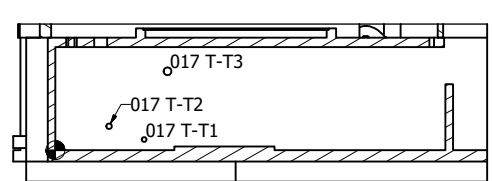
HOLE TABLE			
HOLE	XDIM	YDIM	DESCRIPTION
A1	2075	2530	Ø260 -250 DEEP
A2	2075	3430	Ø260 -250 DEEP

S-S (1 : 100)



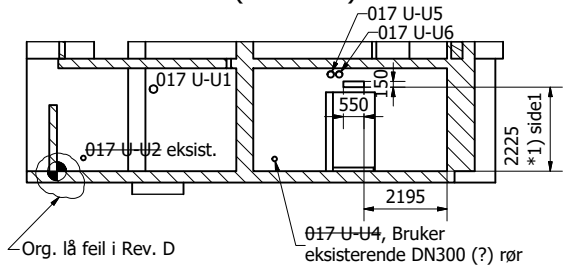
HOLE TABLE			
HOLE	XDIM	YDIM	DESCRIPTION
013 S-S1	-2309	1475	Ø260 -300 DEEP

T-T (1 : 100)



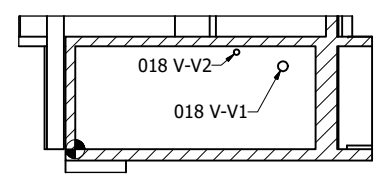
HOLE TABLE			
HOLE	XDIM	YDIM	DESCRIPTION
017 T-T1	2350	283	Ø125 -200 DEEP
017 T-T2	1420	634	Ø145 -200 DEEP
017 T-T3	2970	2090	Ø205 -200 DEEP

U-U (1 : 100)



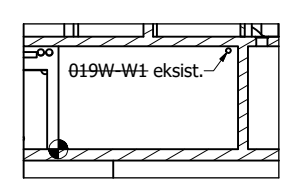
HOLE TABLE			
HOLE	XDIM	YDIM	DESCRIPTION
017 U-U1	2555	2175	Ø205 -275 DEEP
Ø17 U-U2 eksist.	700	350	Ø125 -275 DEEP
Ø17 U-U4, Bruker eksisterende DN300 (?) rør	5765	325	Ø125 -275 DEEP
017 U-U5	7250	2563	Ø170 -200 DEEP
017 U-U6	7475	2563	Ø170 -200 DEEP

V-V (1 : 100)



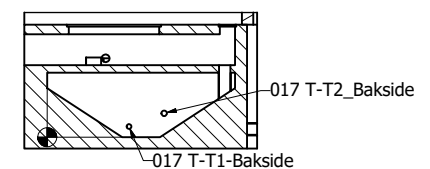
HOLE TABLE			
HOLE	XDIM	YDIM	DESCRIPTION
018 V-V1	5500	2198	Ø260 -265 DEEP
018 V-V2	4272	2570	Ø145 -265 DEEP

W-W (1 : 100)



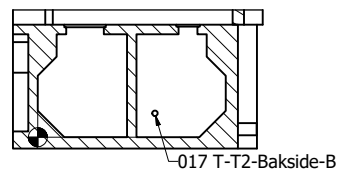
HOLE TABLE			
HOLE	XDIM	YDIM	DESCRIPTION
Ø19W-W1 eksist.	4505	2613	Ø125 -265 DEEP

X-X (1 : 100)

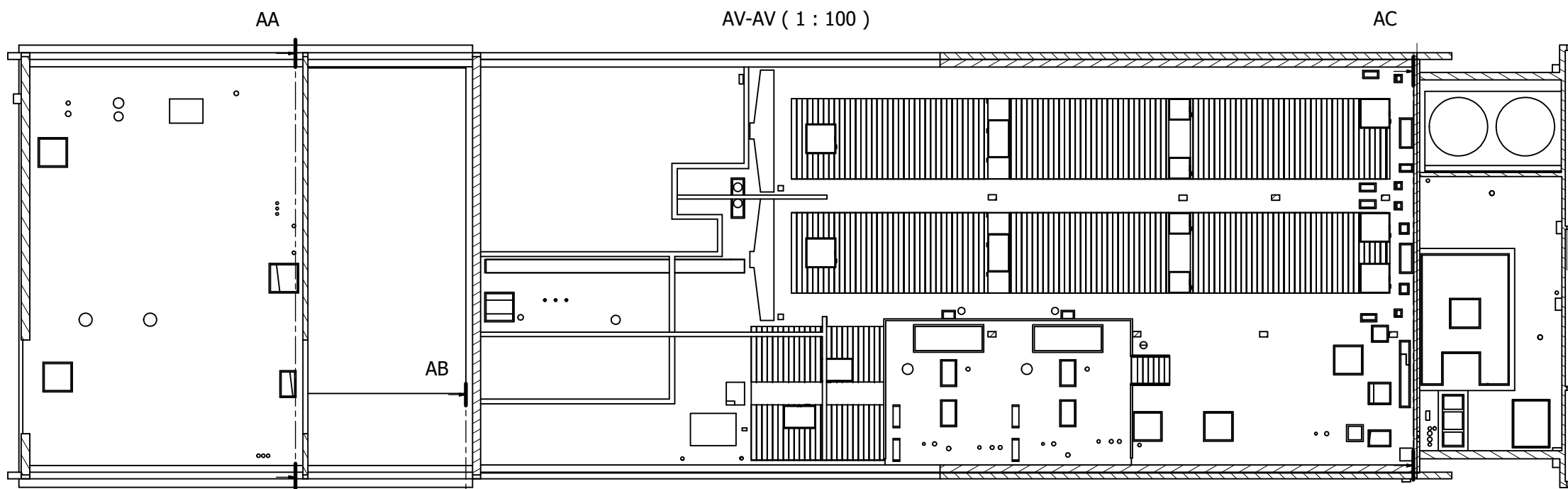


HOLE TABLE			
HOLE	XDIM	YDIM	DESCRIPTION
017 T-T1-Baksida	2167	283	Ø125 -300 DEEP
017 T-T2_Baksida	3097	634	Ø145 -300 DEEP

Y-Y (1 : 100)

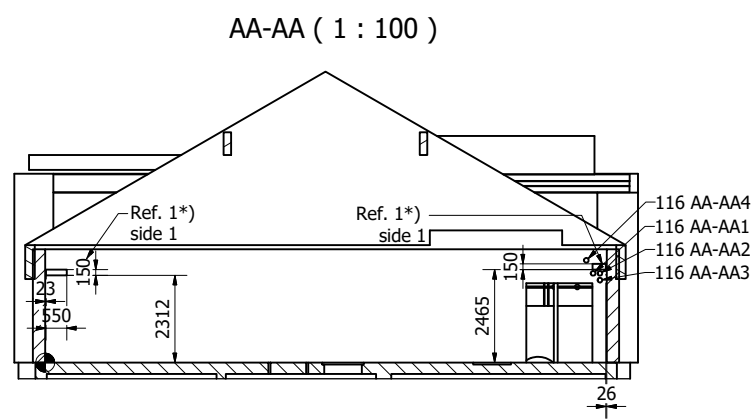


HOLE TABLE			
HOLE	XDIM	YDIM	DESCRIPTION
017 T-T2-Baksida-B	3102	634	Ø145 -342 DEEP

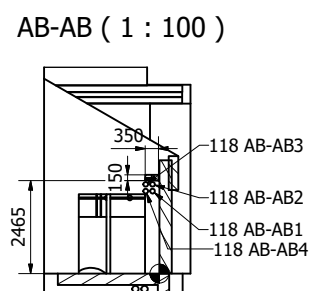


Snitt 3,2m over gulv i bassenghall

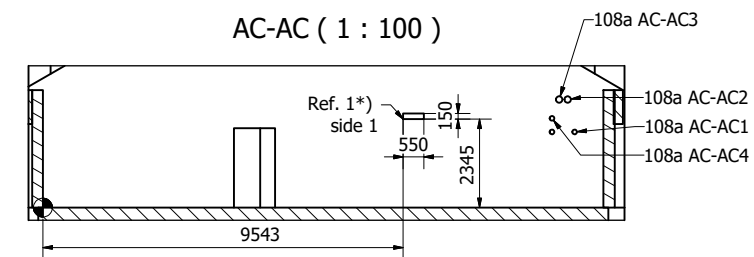
AC
Snitt 2,9m over gulv i bassenghall



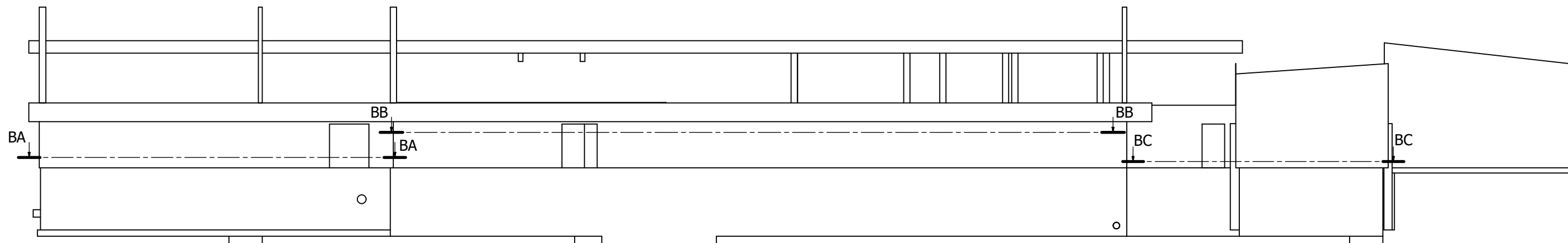
HOLE TABLE			
HOLE	XDIM	YDIM	DESCRIPTION
116 AA-AA1	14515	2365	Ø125 -190 DEEP
116 AA-AA2	14695	2365	Ø125 -190 DEEP
116 AA-AA3	14695	2185	Ø125 -190 DEEP
116 AA-AA4	14335	2710	Ø125 -190 DEEP



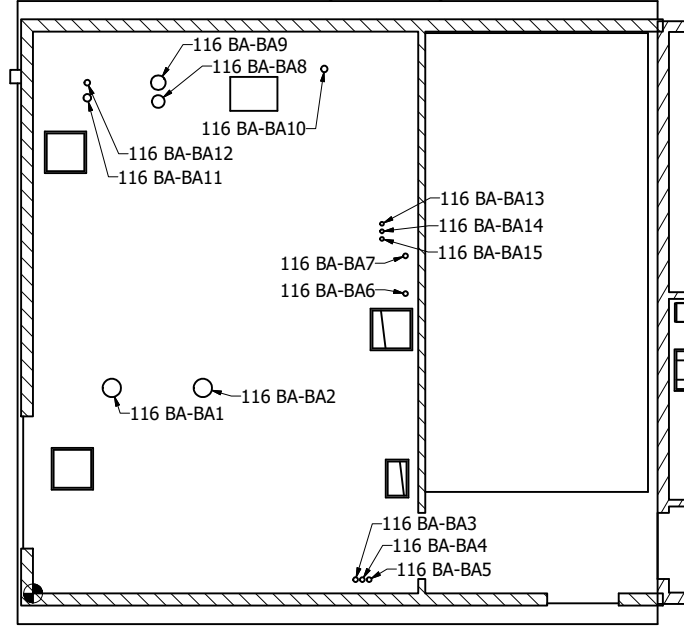
HOLE TABLE			
HOLE	XDIM	YDIM	DESCRIPTION
118 AB-AB4	-365	2185	Ø125 -300 DEEP
118 AB-AB1	-185	2185	Ø125 -300 DEEP
118 AB-AB3	-365	2365	Ø125 -300 DEEP
118 AB-AB2	-185	2365	Ø125 -300 DEEP



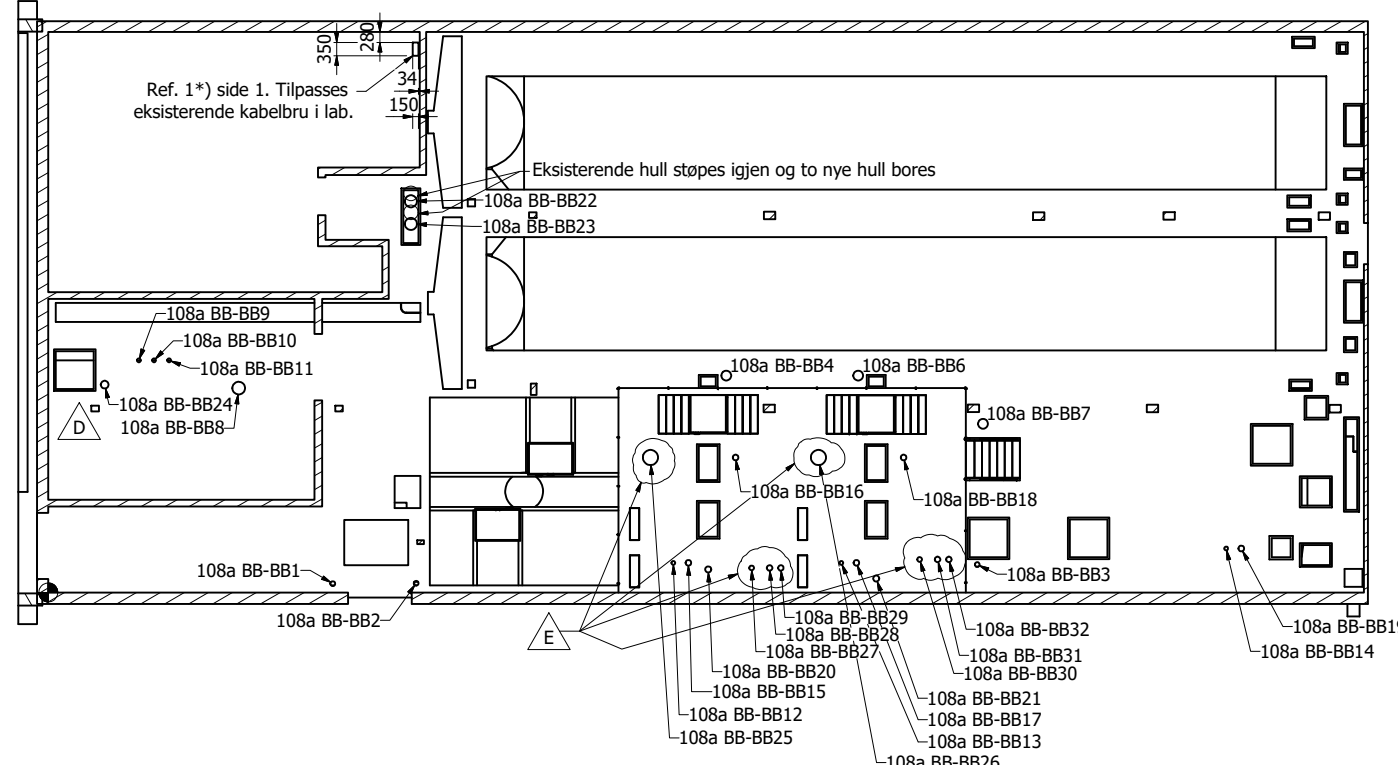
HOLE TABLE			
HOLE	XDIM	YDIM	DESCRIPTION
108a AC-AC1	14085	2005	Ø125 -220 DEEP
108a AC-AC4	13485	2365	Ø125 -220 DEEP
108a AC-AC3	13675	2864	Ø170 -220 DEEP
108a AC-AC2	13900	2864	Ø170 -220 DEEP



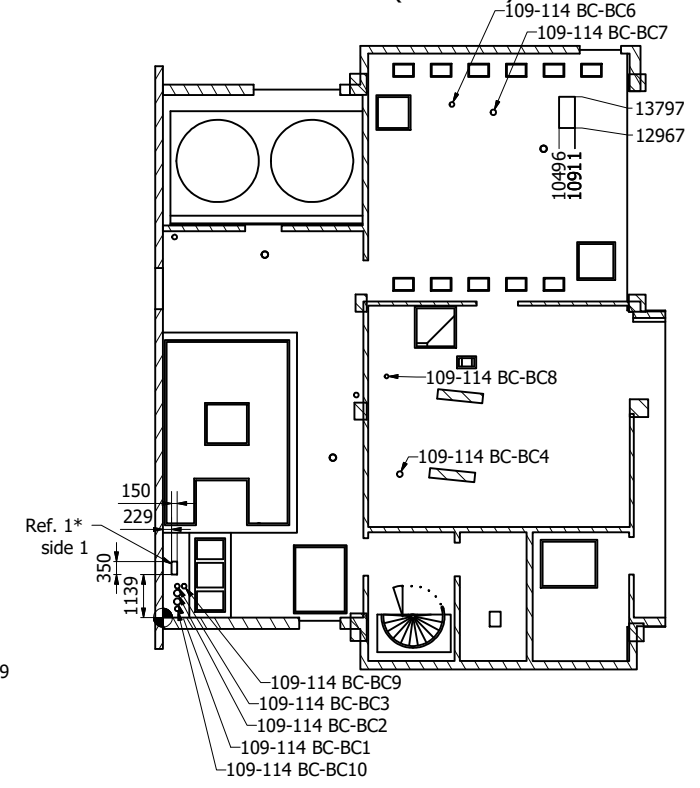
BA-BA (1 : 100)



BB-BB (1 : 100)



BC-BC (1 : 100)



HOLE TABLE			
HOLE	XDIM	YDIM	DESCRIPTION
116 BA-BA3	8541	365	Ø125 -300 DEEP
116 BA-BA4	8721	365	Ø125 -300 DEEP
116 BA-BA5	8901	365	Ø125 -300 DEEP
116 BA-BA6	9865	7940	Ø125 -300 DEEP
116 BA-BA7	9865	8940	Ø125 -300 DEEP
116 BA-BA1	2085	5442	Ø485 -300 DEEP
116 BA-BA2	4495	5442	Ø485 -300 DEEP
116 BA-BA15	9240	9390	Ø100 -300 DEEP
116 BA-BA14	9240	9590	Ø100 -300 DEEP
116 BA-BA13	9240	9790	Ø100 -300 DEEP
116 BA-BA8	3315	13027	Ø335 -300 DEEP
116 BA-BA11	1435	13125	Ø200 -300 DEEP
116 BA-BA12	1435	13525	Ø150 -300 DEEP
116 BA-BA9	3315	13527	Ø385 -300 DEEP
116 BA-BA10	7713	13890	Ø170 -300 DEEP

HOLE TABLE			
HOLE	XDIM	YDIM	DESCRIPTION
108a BB-BB1	7535	233	Ø125 -250 DEEP
108a BB-BB2	9745	245	Ø125 -250 DEEP
108a BB-BB3	24607	740	Ø125 -250 DEEP
108a BB-BB4	17958	5744	Ø260 -250 DEEP
108a BB-BB6	21452	5744	Ø260 -250 DEEP
108a BB-BB7	24758	4467	Ø260 -250 DEEP
108a BB-BB8	5044	5413	Ø335 -250 DEEP
108a BB-BB9	2400	6148	Ø100 -250 DEEP
108a BB-BB10	2800	6148	Ø100 -250 DEEP
108a BB-BB11	3200	6148	Ø100 -250 DEEP
108a BB-BB12	16555	785	Ø100 -250 DEEP
108a BB-BB13	21005	785	Ø100 -250 DEEP
108a BB-BB14	31200	1165	Ø100 -250 DEEP
108a BB-BB15	16955	785	Ø150 -250 DEEP

HOLE TABLE			
HOLE	XDIM	YDIM	DESCRIPTION
108a BB-BB16	18205	3575	Ø150 -250 DEEP
108a BB-BB17	21405	785	Ø150 -250 DEEP
108a BB-BB18	22655	3575	Ø150 -250 DEEP
108a BB-BB19	31600	1165	Ø150 -250 DEEP
108a BB-BB20	17480	612	Ø160 -250 DEEP
108a BB-BB21	21930	370	Ø160 -250 DEEP
108a BB-BB22	9605	10360	Ø320 -220 DEEP
108a BB-BB23	9605	9760	Ø320 -220 DEEP
108a BB-BB24	1493	5504	Ø205 -250 DEEP
108a BB-BB25	15950	3575	Ø400 -250 DEEP
108a BB-BB26	20400	3575	Ø400 -250 DEEP
108a BB-BB27	18630	650	Ø125 -250 DEEP
108a BB-BB28	19105	650	Ø145 -250 DEEP
108a BB-BB29	19405	650	Ø145 -250 DEEP
108a BB-BB30	23080	875	Ø125 -250 DEEP
108a BB-BB31	23555	875	Ø145 -250 DEEP
108a BB-BB32	23855	875	Ø145 -250 DEEP

HOLE TABLE			
HOLE	XDIM	YDIM	DESCRIPTION
109-114 BC-BC10	380	235	Ø125 -250 DEEP
109-114 BC-BC3	380	835	Ø125 -250 DEEP
109-114 BC-BC9	560	835	Ø125 -250 DEEP
109-114 BC-BC6	7655	13591	Ø125 -250 DEEP
109-114 BC-BC1	380	425	Ø170 -250 DEEP
109-114 BC-BC2	380	650	Ø170 -250 DEEP
109-114 BC-BC4	6275	3800	Ø150 -250 DEEP
109-114 BC-BC8	5925	6390	Ø100 -250 DEEP
109-114 BC-BC7	8753	13382	Ø145 -250 DEEP

Endringen var gjort i Rev. D

108a BB-BB5 utgå

109-114 BC-BC5 utgå

Designed by KER	Checked by	Approved by	Date 14/06/2020	Format A1
			Kjerneboring og gjennomføringer Edition E Sheet 4 / 4	