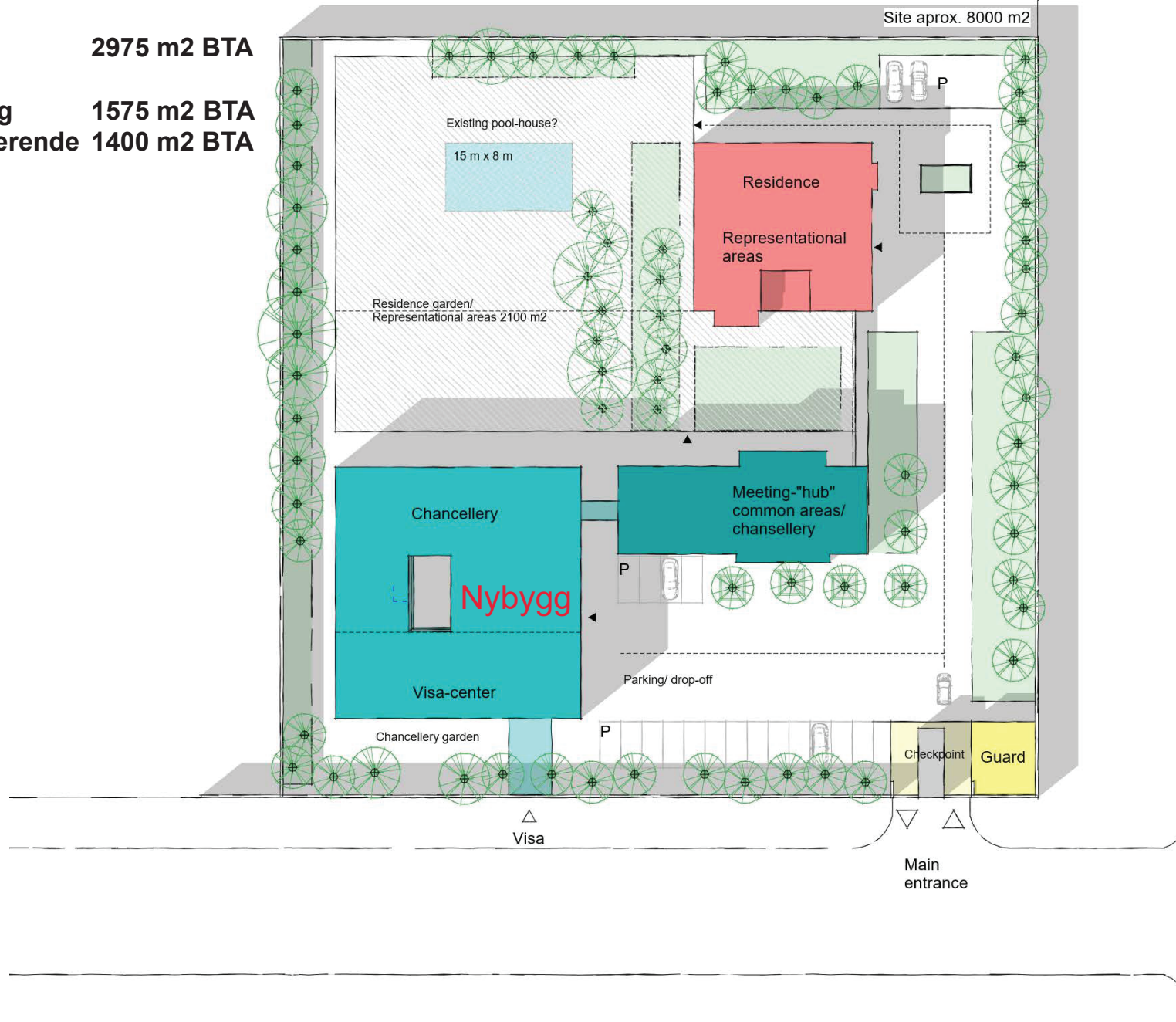
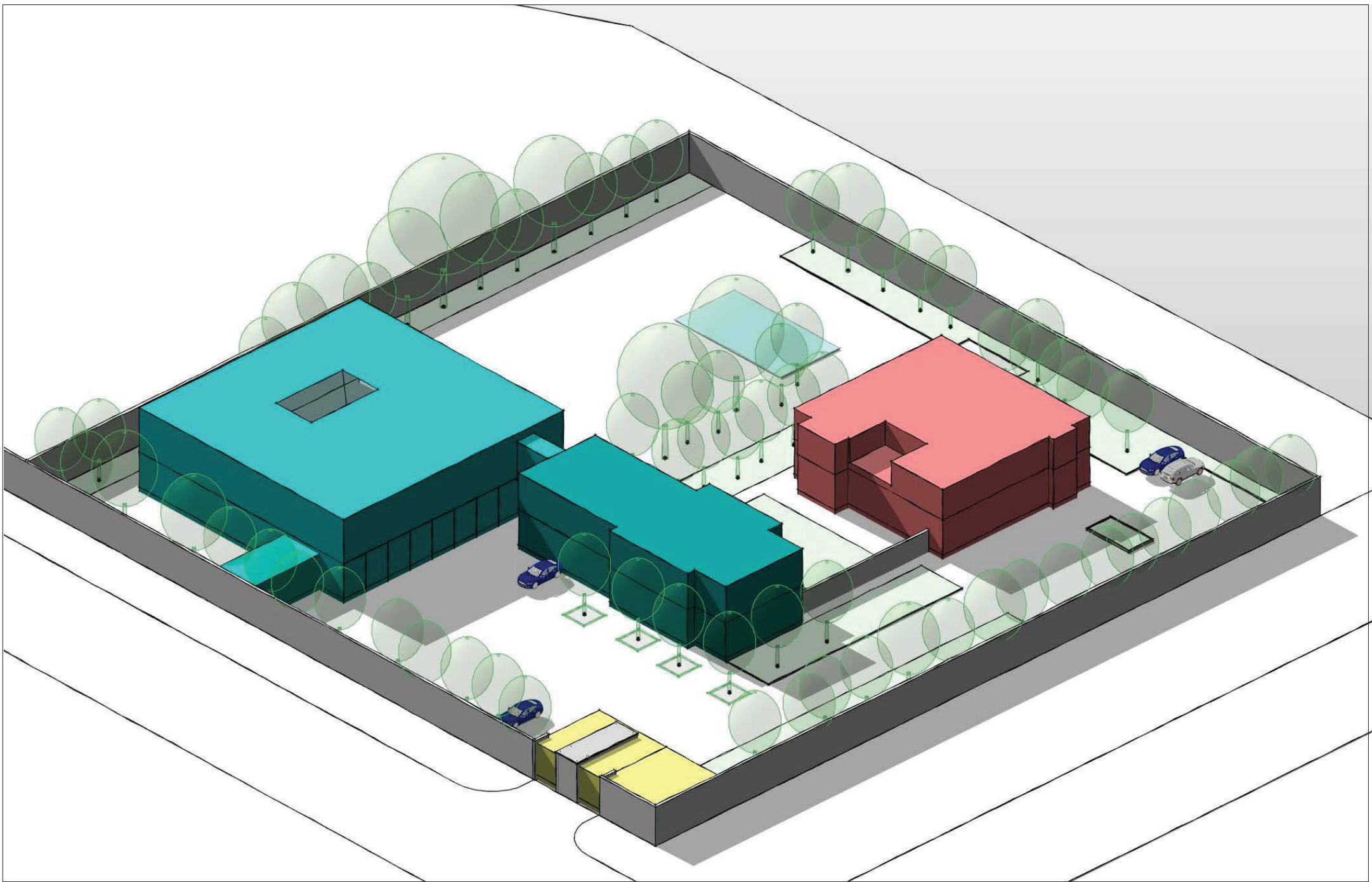


Total 2975 m2 BTA

Nybygg 1575 m2 BTA

Eksisterende 1400 m2 BTA

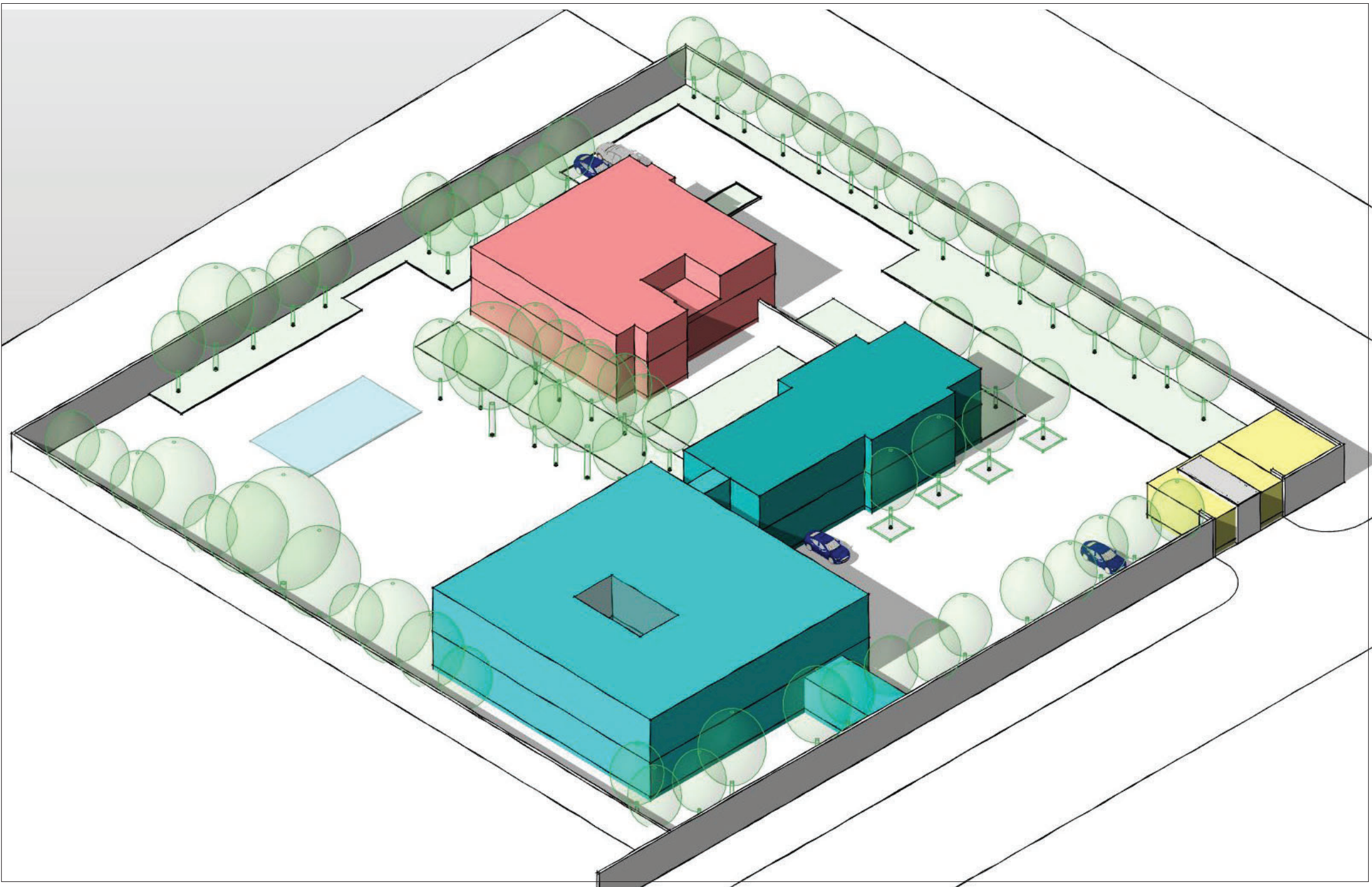




Mars 2019

NORWEGIAN EMBASSY - BEIJING : Illustrasjon ny bebyggelse - ALT 4

 LERCHE ARKITEKTER AS



Mars 2019

NORWEGIAN EMBASSY - BEIJING : Illustrasjon ny bebyggelse - ALT 4

 LERCHE ARKITEKTER AS