
**ENGINEERING, PROCUREMENT AND CONSTRUCTION
CONTRACT**

dated [date]

NORCEM AS

and

Norcem Plant Modifications Contractor

regarding

Norcem Cement Plant modifications for full-scale carbon capture

APPENDIX F COMPANYS DELIVERABLES

Table of Contents

1.	INTRODUCTION.....	4
1.1	Definitions.....	4
2.	ACCESS TO COMPANY’S SITE.....	5
2.1	Site access for personnel.....	5
2.1.1	Access during Winter Repair periods	6
2.1.2	Registration system.....	6
2.1.3	Access to electrical rooms	6
2.1.4	Access to central control room	6
2.1.5	Site access for vehicles	6
3.	COMPANY PROVIDED FACILITIES AND SERVICES	7
3.1	Rest rooms, dining rooms and meeting rooms close to main construction area	7
3.2	Site offices	9
3.2.1	Parking area	10
3.3	Rig areas.....	10
3.3.1	Specific rig areas for Contractor.....	10
3.3.2	Additional lay down areas	11
3.4	Transport routes	11
3.5	Quay facilities	12
3.6	Utilities and Company services.....	12
3.6.1	Potable Water connection point.....	12
3.6.2	Compressed air	12
3.6.3	Fire water.....	12
3.6.4	Electrical power supply during construction	12
3.6.5	Waste water disposal	12
3.6.6	Waste management.....	13
3.6.7	Winter Measures/Snow Clearance.....	13
3.6.8	Area lighting	13
4.	ELEMENTS AND SERVICES NOT PROVIDED BY COMPANY	14
4.1	Access to plant service facilities	14
4.2	Tools and consumables	14
4.3	Canteen services.....	14
4.4	Steam for de-icing.....	14
5.	COMPANY PROVIDED INFORMATION SYSTEMS.....	15

5.1	Work Orders/Safety permits	15
5.2	Framework agreements	15
5.3	Company Provided Drawings	15
5.4	Access to Company 3D model and document management system.....	15
6.	COURSES.....	16
6.1	HSSE Induction Course	16
6.2	Work Orders/ Safety permits	16
7.	ATTACHMENTS	17

1. INTRODUCTION

This Appendix describes what will be supplied to Contractor by Company during project execution.

All elements listed as supplied by Company will be provided free of charge to Contractor.

1.1 Definitions

The definitions included in the Conditions of Contract are also applicable to this Appendix.

Additional to the main Conditions of Contract definitions, the definitions in Table 1 apply:

Table 1: Definitions

Item	Definition
HSSE	Health, Security, Safety and Environment
Winter Repair	Yearly Norcem Plant maintenance stop

2. ACCESS TO COMPANY'S SITE

2.1 Site access for personnel

Following Contract award, Company will grant Contractor access to Company's Site, subject to attendance and successful completion of the necessary safety introduction and HSSE course prior to arrival. Contractor shall note that access is shared with Company and other Contractors, Subcontractors and Suppliers.

All access to site is to be in accordance with local HSSE-regulations, and all access must be registered in an acceptable personnel registration system to enable full control over all personnel being at site at any given time, according to "Byggherreforskriften § 15". Personnel registration system is to be provided by Contractor, unless otherwise agreed.

Further details on rules and restrictions with respect to plant access is described in the SHA plan included as an attachment to Appendix D.



Figure 1: Site access points

Access points (gates) to site are marked in Figure 1:

- Access point G1: Main entrance
- Access point G2: "Grusporten"
- Access point G3: "Kvartsporten"
- Access point G4: "Tangenporten"

All personnel hired or employed by Contractor (or its Subcontractors) will be given access cards provided by Company without unreasonable delay after Contractor's request (to be given in due time before access is

required and providing all relevant personnel details required by Company in order to allow access). The access card will give access through the gates required for necessary access. Vehicles require special permit for access.

2.1.1 Access during Winter Repair periods

As the installation of Norcem Plant modifications require stops in cement production, most of these installations shall be performed during the annual Winter Repair periods. A lot of maintenance activities are executed during the annual Norcem Plant maintenance stops, requiring careful planning of both activities and manning.

Contractor shall comply with Company's at each time applicable rules and regulations for access to Company Site during Winter Repairs.

2.1.2 Registration system

All personnel having daily work on site must register according to "Byggherreforskriften § 15". Registration system and facilities to be provided by Contractor as part of the Work, unless otherwise agreed with Company.

2.1.3 Access to electrical rooms

Access to electrical rooms and substations by Contractor is prohibited unless a specific permit is issued by Company. In case Contractor requires such access for the purpose of the Work, Contractor shall in reasonable time before such access is required request access in writing to Company and shall comply with Company's instructions with respect to such access.

2.1.4 Access to central control room

Access to central control room is restricted, and will be permitted by Company on a case by case basis. In case Contractor requires such access for the purpose of the Work, Contractor shall in reasonable time before such access is required request access in writing to Company and shall comply with Company's instructions with respect to such access.

2.1.5 Site access for vehicles

Contractor will be allowed to have a maximum of 3 vehicles of pick-up size, equipped with remote gate openers for free access to plant area during Contractor's presence on site throughout their construction phase. See Figure 1 for location of access points.

Contractor shall comply with Company's at each time applicable rules and regulations for use of vehicles inside plant area.

3. COMPANY PROVIDED FACILITIES AND SERVICES

3.1 Rest rooms, dining rooms and meeting rooms close to main construction area

The temporary facilities marked with “2” in Figure 2 below, close to the construction area, will have toilets, rooms for resting and dining and meeting rooms. These facilities will be utilized by all contractors involved in the site construction works. Alternative location for this facility is in the area marked with “2b”.

These temporary facilities will be available from start-up of Contractor’s site activities until the end of commissioning.

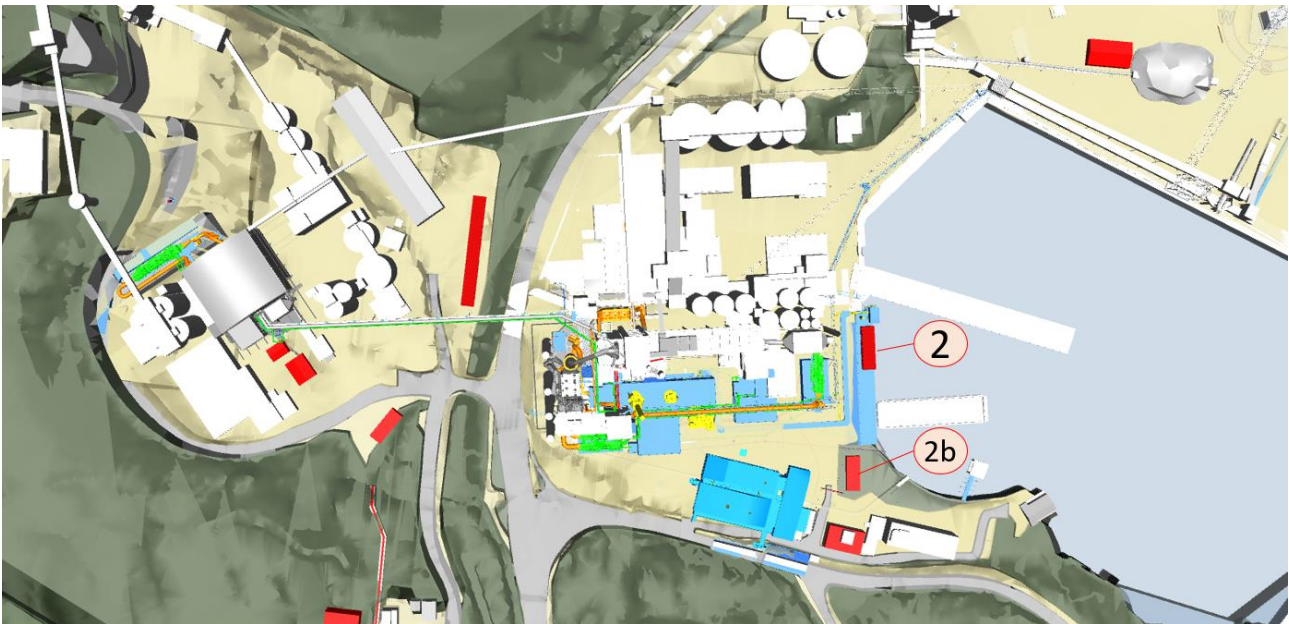


Figure 2: Common rest rooms and dining rooms

The temporary facilities located at “2” or “2b” will comprise of 14 barracks arranged in two levels:

- 1st level is for changing/dining/coffee/resting/toilets
- 2nd level is for offices and meeting rooms (see figure below)

The arrangement of the temporary facilities is shown in Figures 3-6 below.

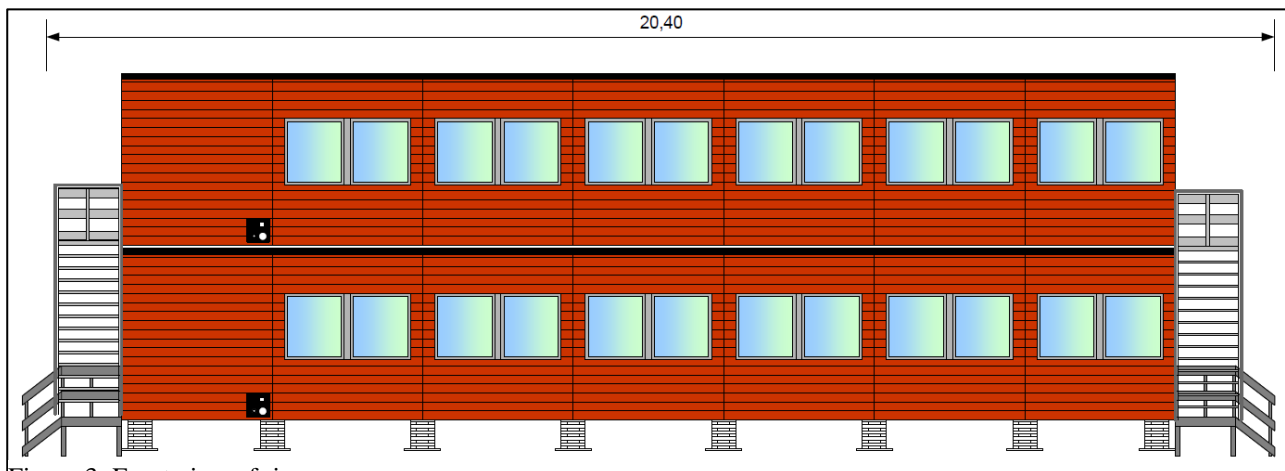


Figure 3: Front view of rig

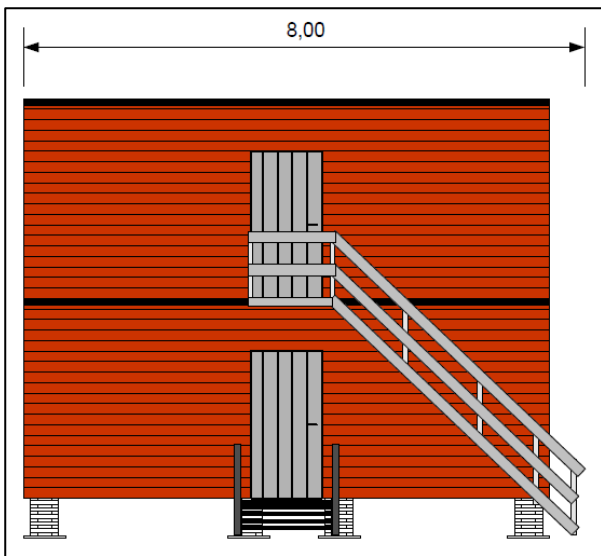


Figure 4: End view of rig

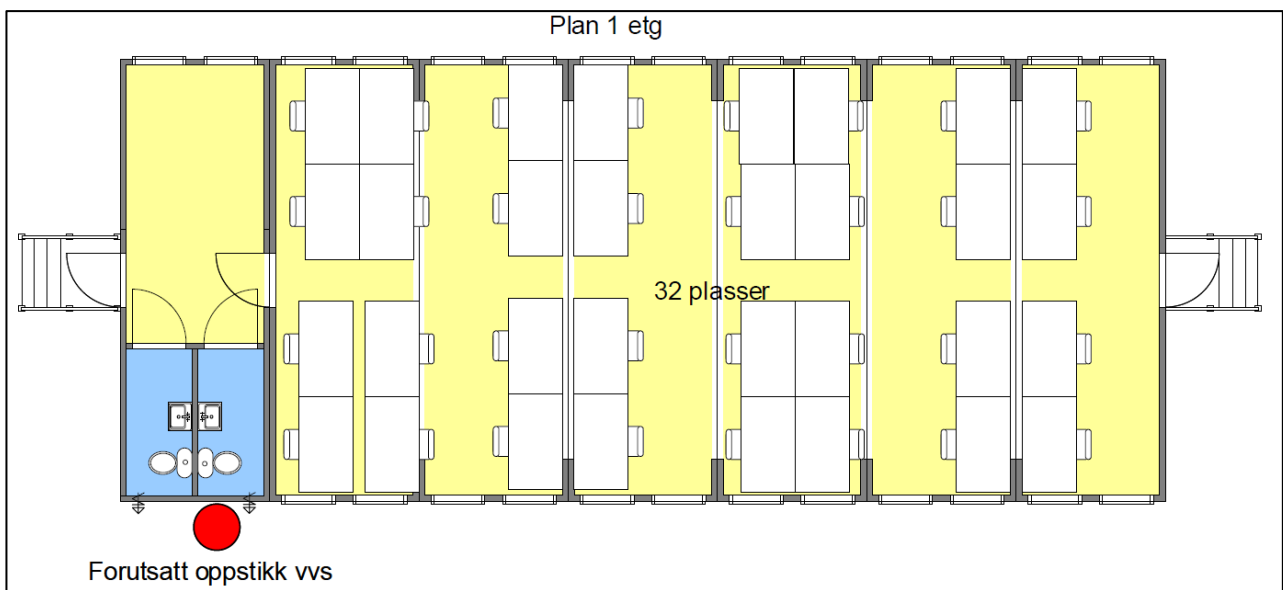


Figure 5: Arrangement 1st floor

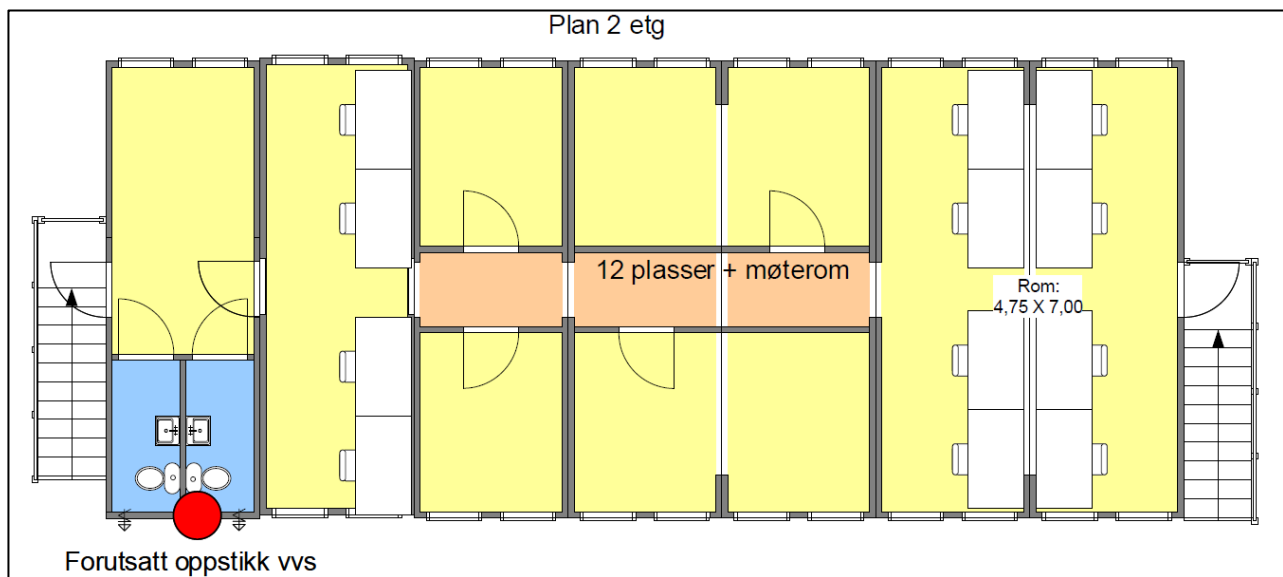


Figure 6: Arrangement 2nd floor

It is assumed that these facilities will be utilized at different times by different contractors. Hence the number of people using it simultaneously will be limited, and the above shown capacity should be adequate.

Contractor may propose changes to its allocated parts of the shown arrangement provided there is no increase in footprint area or costs to Company.

It is important that these facilities are not oversized so as to control area allocation and costs. However, if formally agreed with Company, it is possible to extend the arrangement by adding more units if proven necessary at a later stage, limited to a maximum of 20, arranged in two levels.

3.2 Site offices

Up to 5 office places with basic furniture in place, will be made available for Contractor in existing plant facilities when required.

3.2.1 Parking area



Figure 7: Parking areas

One parking area is available for Contractor:

- “Schous Løkke”, lower level (P1 in Figure 7).
 - Approximately 10 parking spaces will be available for Contractor

Parking inside plant area is generally only allowed for delivery of materials, tools etc. Allowance for access through the plant gate is provided by the plant reception on a case by case basis, unless for dedicated vehicles given general access.

3.3 **Rig areas**

3.3.1 Specific rig areas for Contractor

Contractor will be given access to dedicated rig areas for storage and pre-assembly. Due to all the other construction activities that will take place during the same time frame, and due to big variation in need during the construction period, rig area for this package will be shifted and adjusted in size and location in cooperation with Company and other contractors.

As a general statement, Company will provide rig areas of a total area of up to 2000 m² for Contractor of this specific package. Utilities will be provided in rig areas as specified in section “3.6 Utilities and Company services”.

One electrical power terminal with adequate capacity will be arranged by Company in each listed rig area. General lighting for walking in area will be arranged by Company. All necessary working light must be arranged by Contractor.

3.3.2 Additional lay down areas

Additional lay down areas may be available for short durations, but must be discussed and specifically agreed with Company in each case to coordinate with other plant activities or other contractors.

3.4 **Transport routes**

Transport routes shall be kept open for smooth transport and logistics around the plant area unless otherwise agreed with Company in advance. Contractor shall inform Company in due time of any special transport or other possible limitation of traffic on the transport routes around the plant area, and shall comply with Company’s instructions as to planning and timing of such events.

The main transport route for heavy equipment brought to site by barge, is indicated in Figure 8 below. This transport route, including the part of “Cementine quay” where transport from the barge will pass, will be dimensioned for a maximum load of 4 tons/m², unless other requirement is proven and agreed prior in writing with Company.

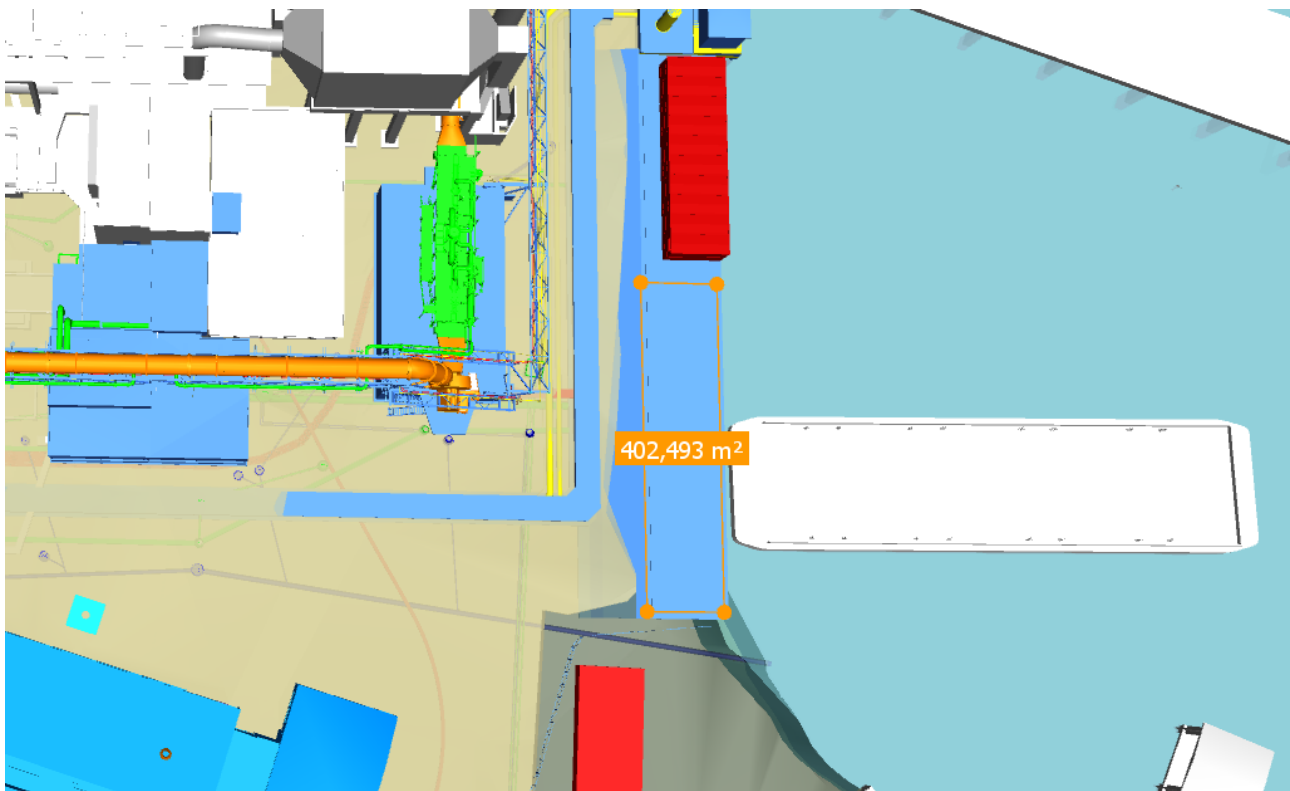


Figure 8: Main transport route for modules and heavy equipment

3.5 Quay facilities

“Cementine quay” will be available for Contractor for loading/unloading of equipment and fabricated parts/items from ships or barges. Storage of loaded items shall be in designated laydown areas as specified herein or agreed with Company.

3.6 Utilities and Company services

At Company’s Site, Company will provide Contractor with the Temporary utilities described in the following subchapters.

3.6.1 Potable Water connection point

Potable water is available from the existing tap water system at Norcem. Data and connection points are described in Attachment 1: NC03-NOCE-Z-RA-0001 - Overall Design Basis V_5, section 6.2 Potable water.

3.6.2 Compressed air

Compressed air and instrument air as may be required for construction purposes are available from the existing system at Norcem. Data and connection points is described in Attachment 1: NC03-NOCE-Z-RA-0001 - Overall Design Basis V_5, section 6.11 Instrument air and 6.12 Pressurized air– plant air.

3.6.3 Fire water

Fire water is available from the existing system at Norcem. Data and connection points is described in Attachment 1: NC03-NOCE-Z-RA-0001 - Overall Design Basis V_5, section 6.14 Fire water

3.6.4 Electrical power supply during construction

Power for construction works is available from the existing system at Norcem. Reference is made to Attachment 1: NC03-NOCE-Z-RA-0001 - Overall Design Basis V_5, section 3.8 Power supply during construction.

Temporary connection points for electrical power supply will be arranged by Company in centralized locations from where Contractor must provide required extension cables. In general Company will seek to arrange connection points where need for extensions is limited to 20 meters. However, for minor and short duration needs, longer extensions is acceptable.

The connection points will be located one time by Company, where specified by Contractor. Any relocation is Contractors responsibility. Power capacity requirements to be specified and documented by Contractor. Any temporary extension cabling of from the listed connection points is Contractors responsibility.

3.6.5 Waste water disposal

Contractor will be given access to disposal of waste water (of quality allowed by Porsgrunn Municipality)

3.6.6 Waste management

All waste management is to be arranged by Contractor, in accordance with plant regulations and waste treatment provider's requirements. All waste handling must be arranged within the areas dedicated for Contractor.

3.6.7 Winter Measures/Snow Clearance

Company will clear ice and snow from permanent access roads and parking areas at Company's Site, but Contractor is responsible for keeping laydown and construction areas (including the Contract Object) clear from snow and ice, and for other weather protection measures that may be required during the course of the Work.

3.6.8 Area lighting

Company will provide general area lighting from high level. Additional temporary lighting must be arranged by Contractor.

4. ELEMENTS AND SERVICES NOT PROVIDED BY COMPANY

4.1 Access to plant service facilities

Access to administration building, plant workshops, tool store and plant central warehouse is not allowed for Contractor unless following Company's prior written approval at a case-by-case basis.

4.2 Tools and consumables

Company will not provide any tools, auxiliaries, construction machinery or equipment to Contractor additional to what is specifically defined in this Appendix F.

4.3 Canteen services

Canteen facilities are not provided by Company.

4.4 Steam for de-icing

Steam for de-icing is not available.

5. COMPANY PROVIDED INFORMATION SYSTEMS

5.1 Work Orders/Safety permits

Company will be responsible to establish a Work Order/Safety permit system.

5.2 Framework agreements

Company will provide access to Company's Frame agreement stated under Appendix H, if required and allowed by actual agreement/supplier. Any order placed by Contractor, as the case may be, under such Frame agreement, shall constitute and be deemed as a contract between Contractor and the relevant supplier (and Company shall have no obligations or liabilities pursuant to the Frame agreement relating to such order thus placed).

5.3 Company Provided Drawings

Company shall provide drawings of temporary facilities and plant interfaces, as required.

5.4 Access to Company 3D model and document management system

Company will provide Contractor with the necessary access to Company's 3D CAD model and document management system.

6. COURSES

6.1 HSSE Induction Course

Company will provide HSSE introduction course as required for attaining access to Company's Site. Courses must be accomplished and approved by each individual before arrival at site.

6.2 Work Orders/ Safety permits

Company will provide training in the Work Order/ Safety Permits as required.

7. ATTACHMENTS

Attachment 1: NC03-NOCE-Z-RA-0001 Overall Design Basis, Rev.05