



UTRUSTNINGSDOKUMENT

FOR

KYSTFORSKNINGSFARTØY

Doc. no.: 389017-CA-431-U-LMG-00001

Client doc. no.:

Revision: **03**

Bergen 16.06.2020

Client HAVFORSKNINGSINSTITUTTET

Key person ROY ÅGE KLEPSVIK

Document title UTRUSTNINGSNUMMER

Project name KYSTFORSKNINGSFARTØY

Project number 389017

Internal document number 389017-CA-431-U-LMG-00001

Client document number

External distribution EIER

Classification NONE

THIS DOCUMENT IS FOR COMMERCIAL REASONS GRADED AS CONFIDENTIAL. THE DOCUMENT IS LMG MARIN'S PROPERTY AND SHALL NOT BE DISTRIBUTED AS A WHOLE OR IN PARTS TO ANY OTHER THAN THOSE EXPLICITLY IDENTIFIED FOR EXTERNAL DISTRIBUTION ABOVE. EXCEPTIONS CAN ONLY BE MADE WITH PRIOR WRITTEN PERMISSION FROM LMG Marin AS

Revision	Date	By	Checked	Approved	Comments
03	16.06.2020	VOK	PEMA	VOK	Opddatert for anbud
02	12.03.19	VOK	GENE	VOK	Oppdatert ihht. Kommentar.
01	05.02.19	VOK	GENE	VOK	Første utgivelse



TABLE OF CONTENTS

1.	OPPSUMMERING.....	2
2.	BEREGNING AV UTRUSTNINGNUMMER	2
3.	SKISSE AV PROJISERT AREAL	4
4.	REFERANSER	4



Document revision list	
Rev	Description of changes
01	Første utgivelse.
02	Oppdatert i henhold til kommentar frå reder.
03	Oppdatert i forbindelse med anbud.
04	
05	



1. OPPSUMMERING

Denne rapporten gir underlaget og utregning av utrustningsnummeret for LMG 35-CRV. Beregning er gjort i henhold til DNVGL-RU-SHIP Pt.3 Ch. 11 Januar 2018 /1/.

Utrustningsnummeret er **251**

Anker, slepetrosser og fortøyningstrosser skal vere dimensjonert og med antall i henhold til tabell 1 i /1/ med utrustningsnummeret som inngangsdata i venstre kolonne.

2. BEREGNING AV UTRUSTNINGSNUMMER

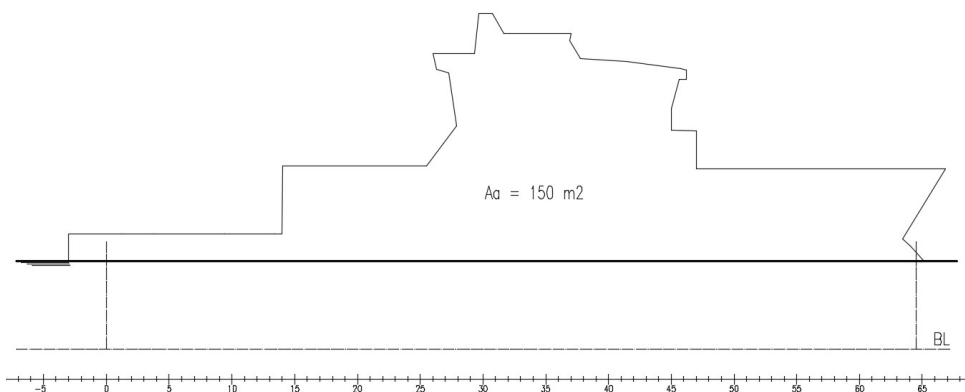
LMG 35-CRV			
Equipment Number calculation			
DNV RULES	Pt.3 Ch.11 Sec.1		
Input data:			
Δ	725.4	t	Moulded displacement in t in salt water on draught T
B	10	m	Greatest moulded breadth in m, measured at the summer waterline
T	3.5	m	Mean moulded summer draught in m
H	7.7		Effective height in m from the summer load waterline to top of uppermost deckhouse
Σhi	6.6	m	Height in m on the centreline of each tier of houses having a breadth greater than B/4
a	1.1	m	Distance in m from summer load waterline amidships to the upper deck at side
Aa	150	m ²	Area in m ² in profile view of the hull, superstructure and houses above summer load waterline which is within L of the ship. Houses with breadth less than B/4 shall be disregarded. Am includes projected area with deck load included.
Am	166	m ²	
Output data:			
$\Delta^{(2/3)}$	81		
2,0HB	154		
Aa/10	15		
Am/10	16.6		
ENa	250		EN for anchor
ENm	251		EN for mooring



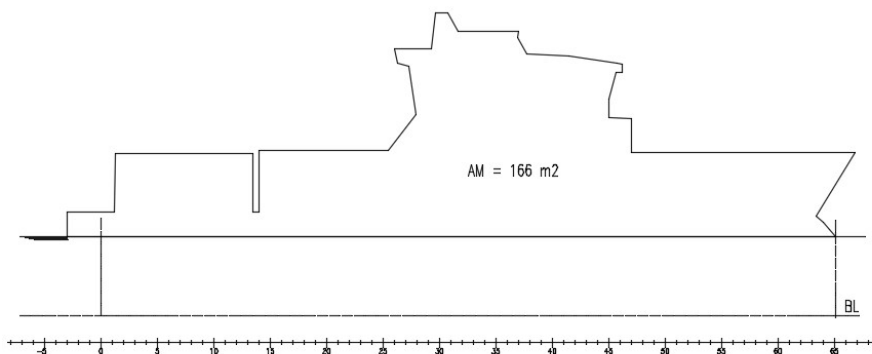
DNVGL						
Equipment number				251	- largest figure is used	
Equipment letter				I	-	
Stockless bower anchors.	Number			2		
	Mass pr anchor			780	<i>kg</i>	
Stud-link chain cables	Total length			330	<i>m</i>	
	Diameter and steel grade	NV K1		28	<i>mm</i>	
		NV K2		24	<i>mm</i>	
		NV K3		22	<i>mm</i>	
Tow line (guidance)	Steel or fiber ropes	Minimum length		180	<i>m</i>	
		Minimum breaking strength		150	<i>kN</i>	
Mooring lines	Steel or fiber ropes	Number		4		
		Lenght of each		120	<i>m</i>	
		Minimum breaking strength		75	<i>kN</i>	

3. SKISSE AV PROJISERT AREAL

Projisert areal uten dekkslast (A_a)



Projisert areal med dekkslast (A_m)



4. REFERANSER

	Document number	Document title	Rev.
/1/	DNVGL-RU-SHIP Pt.3 Ch. 11	Hull equipment, supporting structure and appendages	Jan 18
/2/			
/3/			