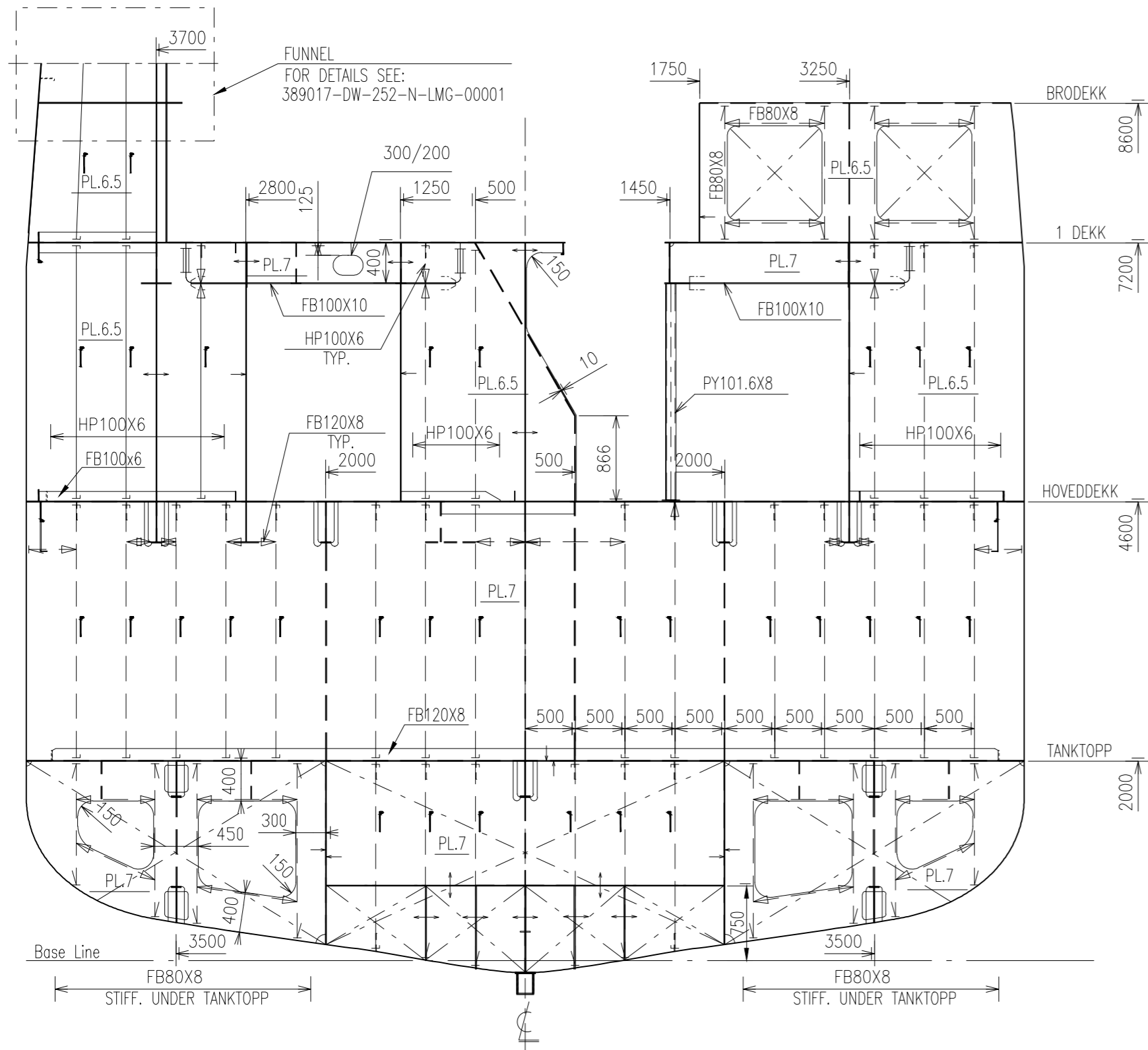


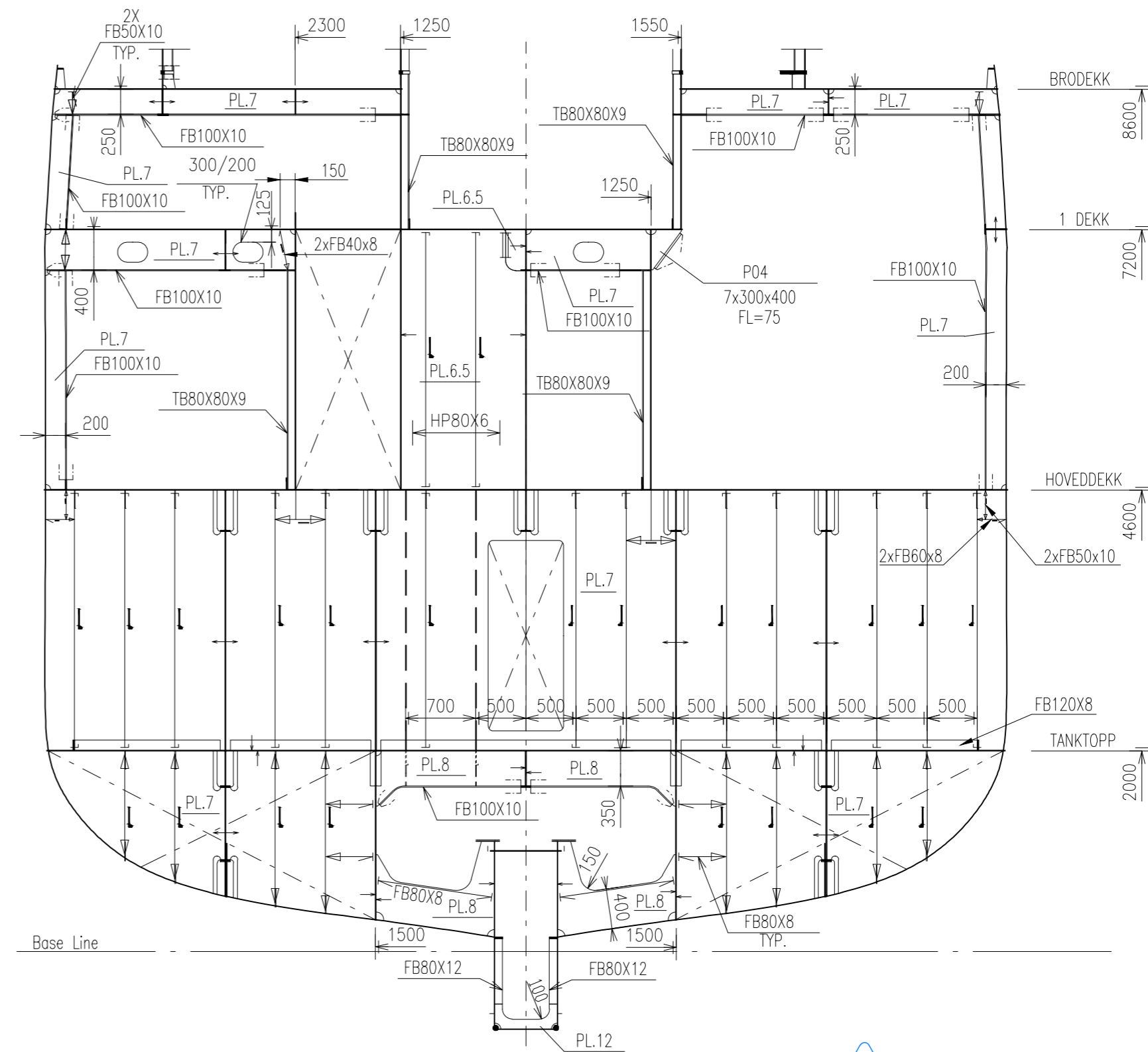
Frame 26

STIFFENERS HP120X6, EXCEPT AS SHOWN



Frame 38

STIFFENERS HP120X6, EXCEPT AS SHOWN



REFERENCE DRAWINGS

- GENERAL ARRANGEMENT	(DWG. No.: 389017-DW-101-C-LMG-00001)
- MIDSHIP SECTION	(DWG. No.: 389017-DW-220-N-LMG-00002)
- PROFILE AND PLAN	(DWG. No.: 389017-DW-220-N-LMG-00003)

REMARKS

- MATERIAL: GRADE NVA WITH YIELD STRENGTH OF 235 N/mm² IF NOT SHOWN OTHERWISE
- FRAME SPACING 500mm.
- WEB FRAME SPACING 2000mm
- DETAILS AND OTHER ELEMENTS OF CONSTRUCTION SHALL BE IN ACCORDANCE TO LMG CRV-35 REFERENCE DRAWINGS.
- LOCATION OF ALL OPENINGS INCLUDING HATCHES, DOORS, WINDOWS, VENTILATION, CHOCKS, etc. ARE FOR REFERENCE ONLY. ACTUAL LOCATION AND SIZE OF CUT-OUTS WILL BE PRESENTED IN THE RELEVANT DETAIL DRAWING.

KOMMENTARER

- INFORMASJONEN PÅ DENNE TEGNINGEN ER PRELIMINÆR. AVVIK MELLOM DOKUMENT KAN FOREKOMME.

05					
04					
03					
02	UTGITT FOR ANBUD.	18.06.2020	HLE	PEMA	VOK
01	ISSUED FOR BID PHASE	12.08.2019	ADA	JW	WO
REV.	TEKST	REV.DATO	UTARB.	SJEKK.	GODKJ.

DENNE TEGNINGEN ER LMG MARIN AS SIN EIENDOM. TEGNINGEN SKAL IKKE LEGGES FREM FOR NOEN TREDJEPART UTEN SKRIFTLIG TILLATELSE FRA LMG MARIN AS.

DESIGNER	VERFT	LMG MARIN AS TEGNINGSNUMMER
		389017-DW-220-N-LMG-00004
KUNDE	PROSJEKT	LMG 35-CRV KYSTFORSKNINGSFARTØY
KUNDENS DOKUMENT NR.	TITTEL	WATERTIGHT BULKHEADS
ERSTATTER:		
TEGNEPROGRAM	HOVEDSKALA	ARKSTØRRELSE
ACAD 2015	1:50	A2
		ARK
		1 av 1