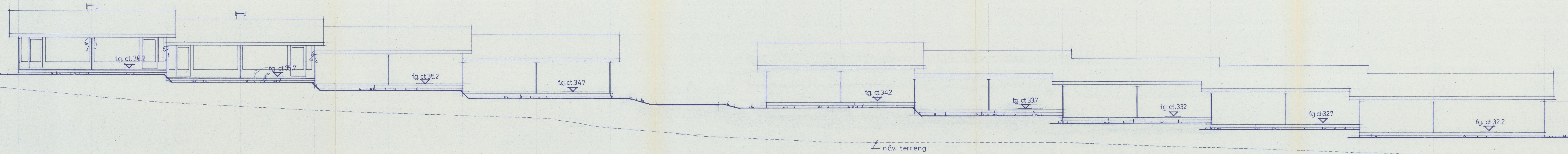
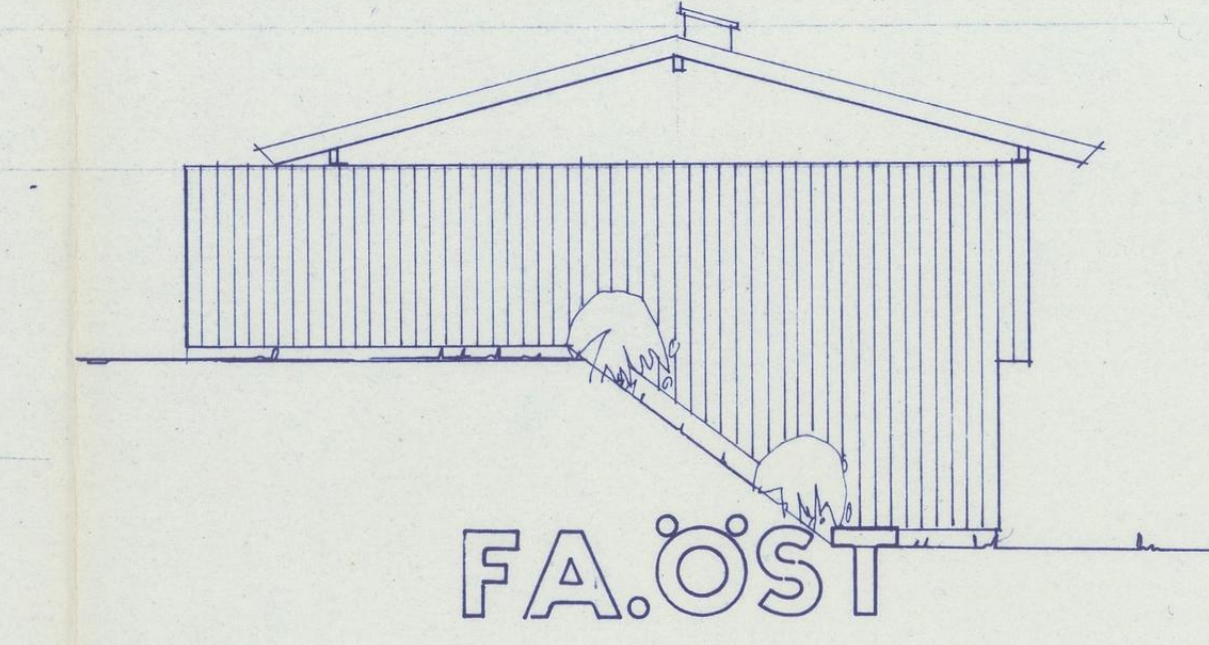
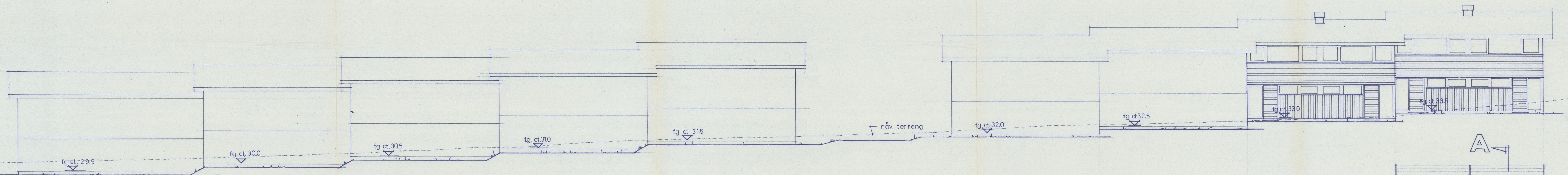


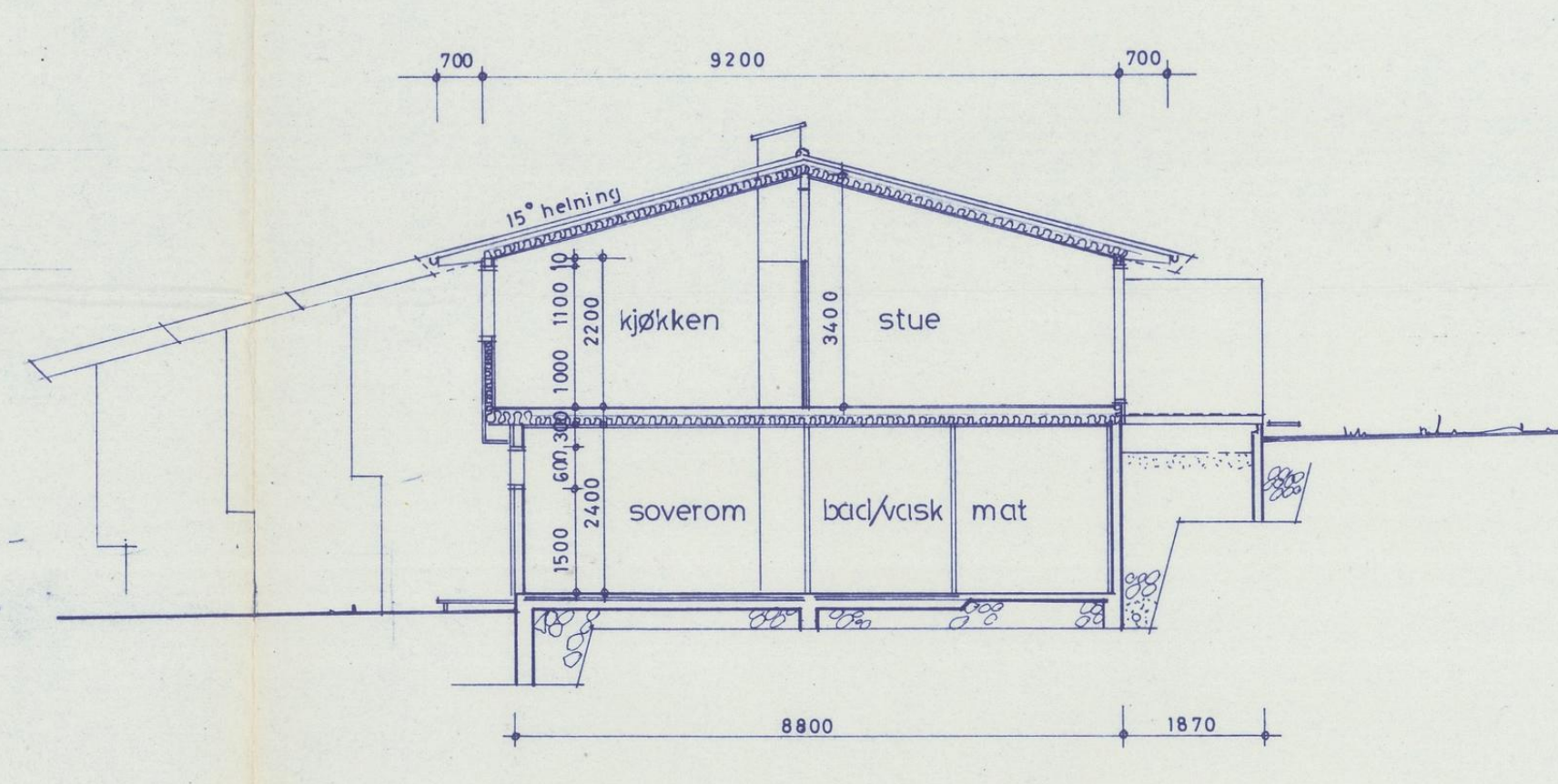
FA.SYD



FA.NORD

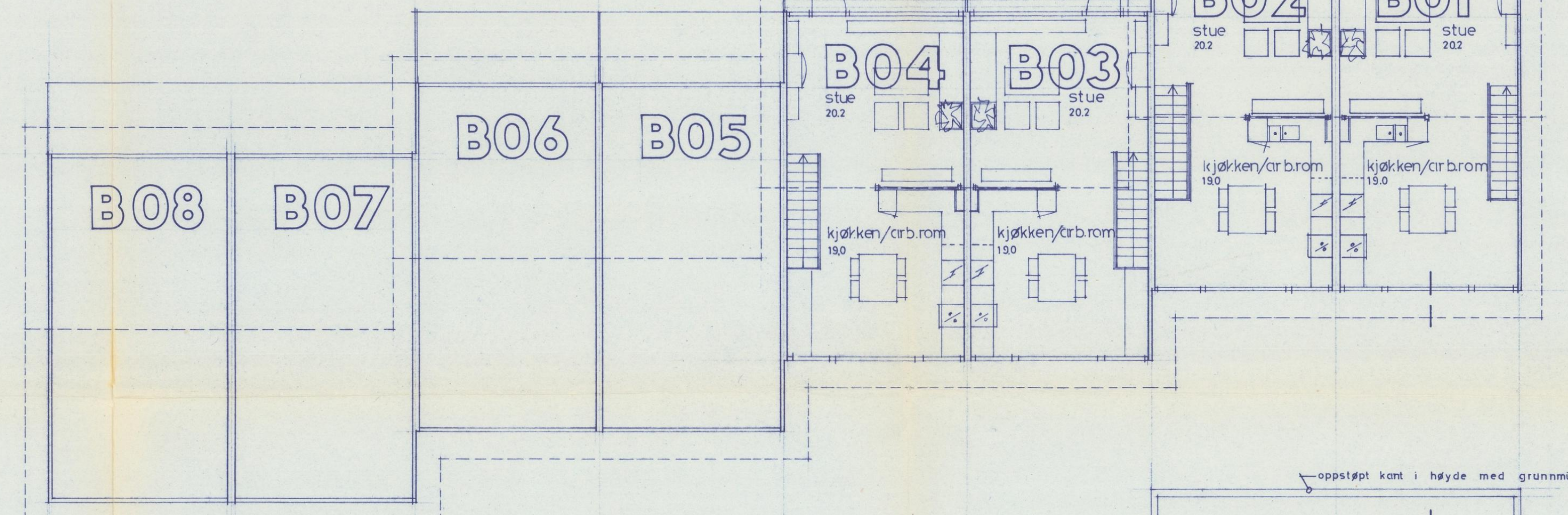
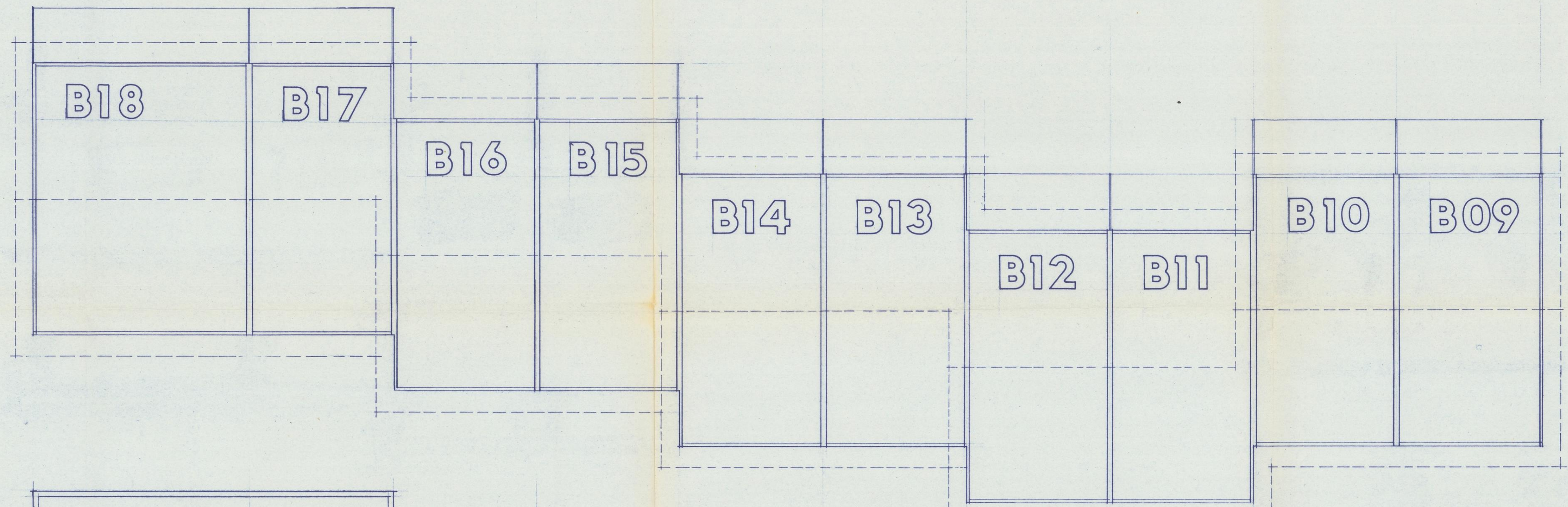


FA.ØST

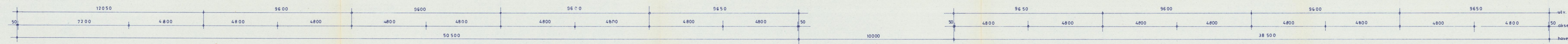
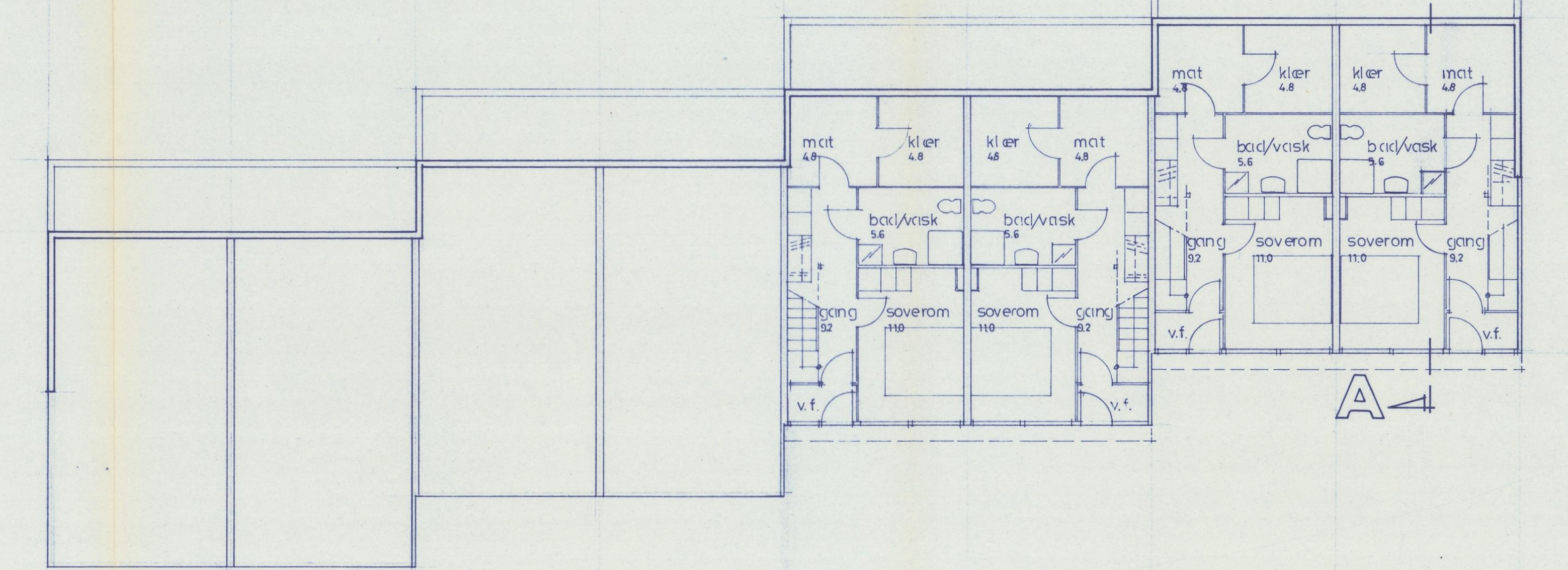
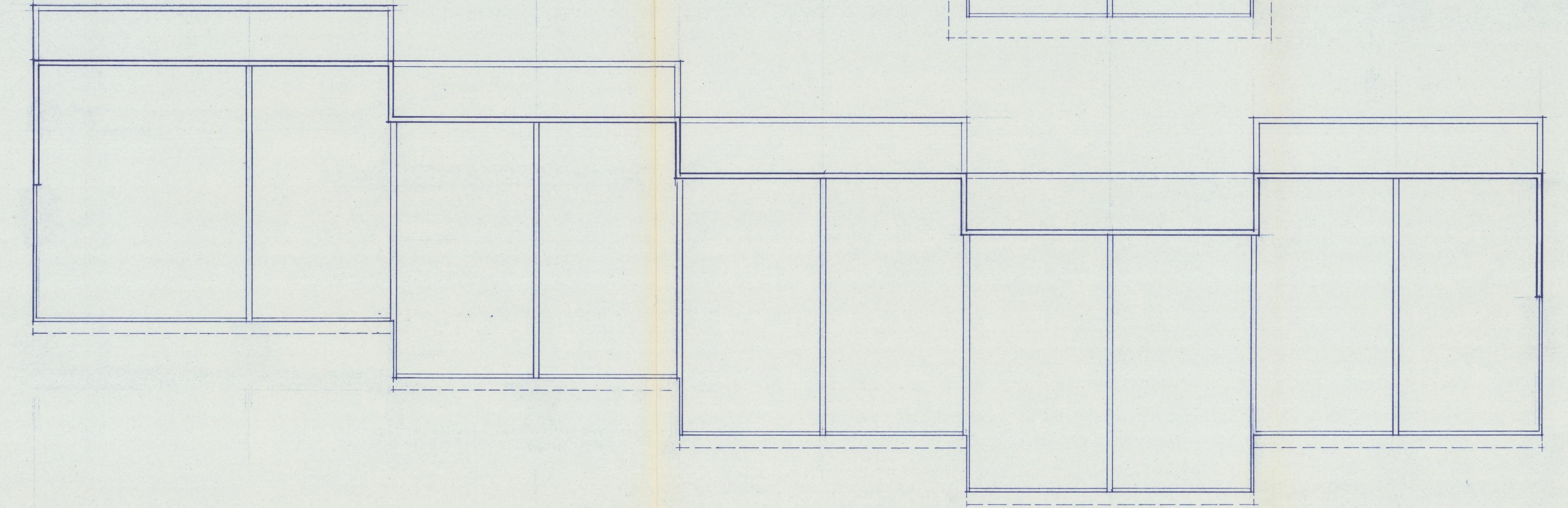


SNITT A

1.ETG.



U.ETG.



Etasje	dato	forr. tegner	sign.
1			
2			
3			
4			
5			
6			
7			
8			
9			
10			
11			
12			
13			

STAVANGER KOMMUNE
 15 JUNI 1975
 A.001 2244

17-24
A 02

SØRHEIM, HILLEVÅG
REKKEHUS
 planer, snitt og fasader m - 1 : 100
 rekke B

byarkitekten i stavanger | dato 6/5 1976 | thy