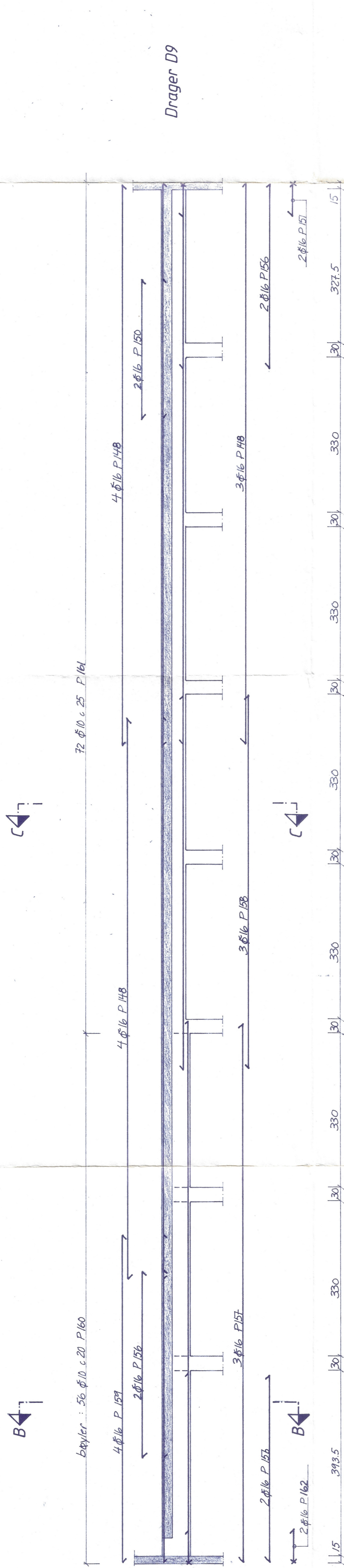
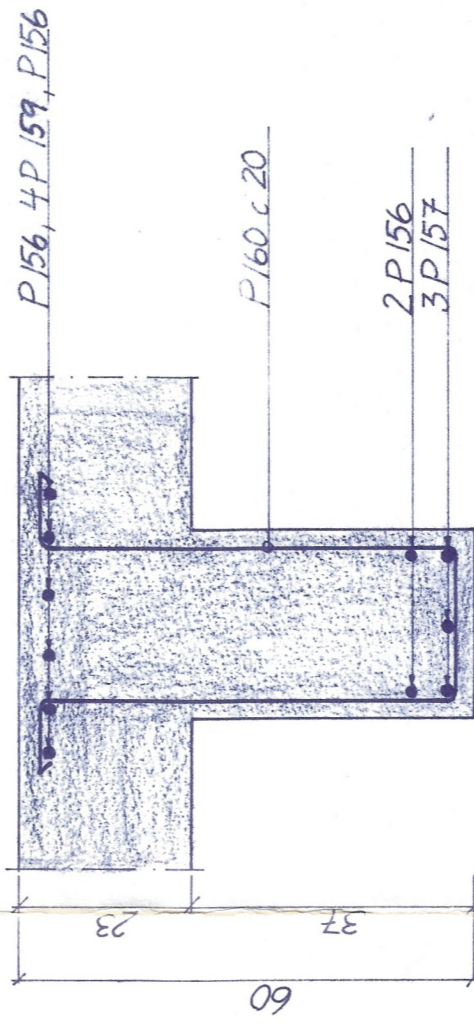


Drager D8

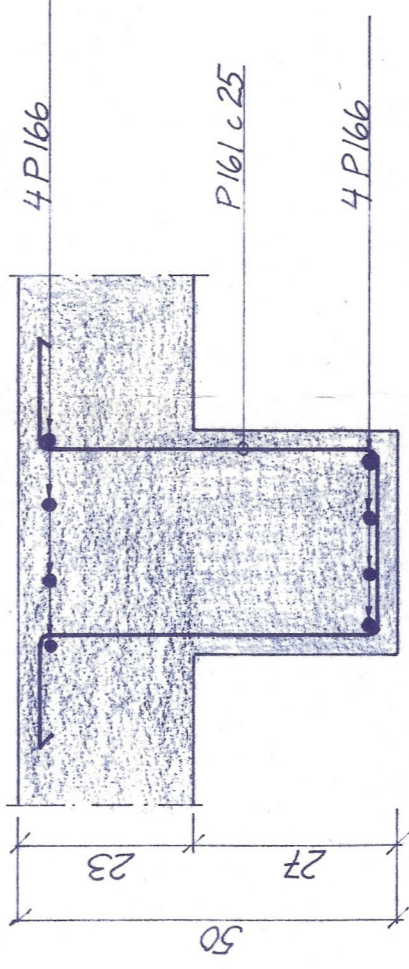


Drager D9



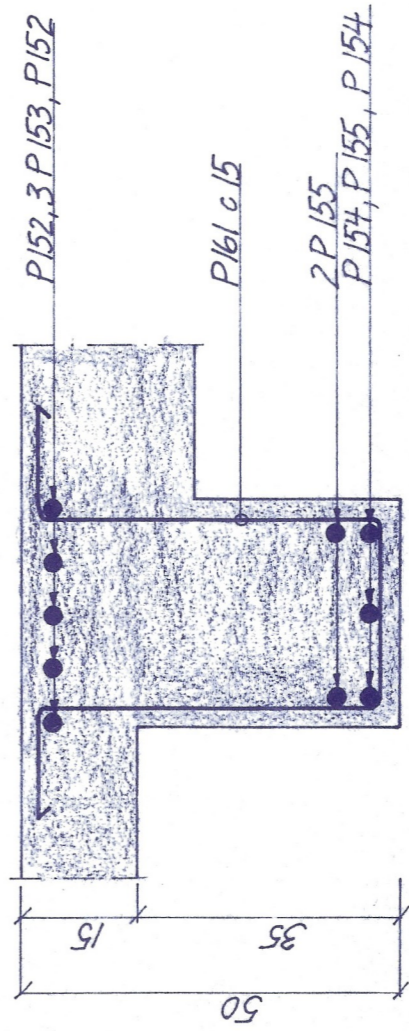
Typisk snitt D7

M=1:10
P163 i hele dragerens lengde.
Omfang > 70 cm
P164 ekstra i endefeit
P162 i hver ende.



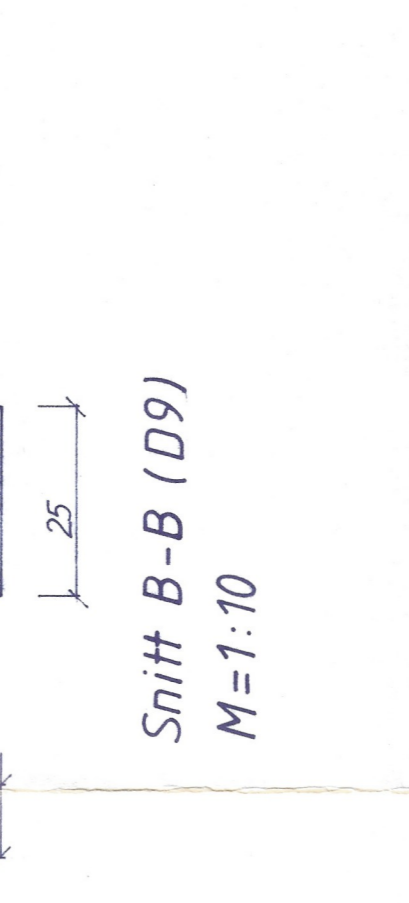
Typisk snitt D6

M=1:10
P151 i hver ende



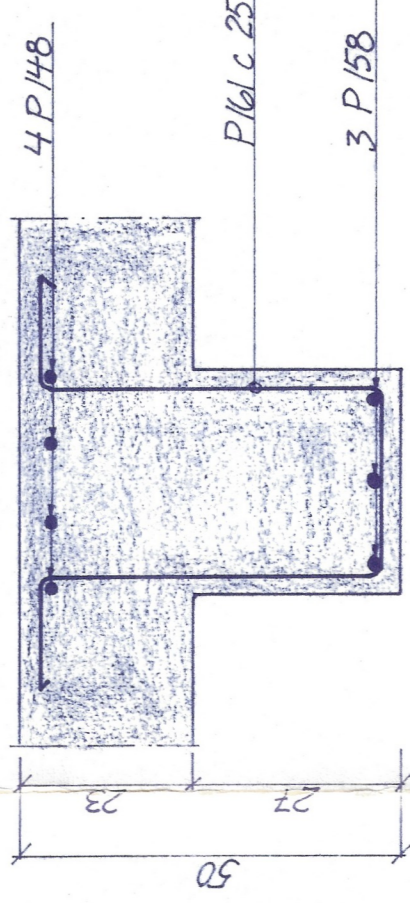
Snitt A-A (D8)

M=1:10



Snitt B-B (D9)

M=1:10



Snitt C-C (D9)

M=1:10

Betong C25
Armering KS40 og KS40 S
Overdekning 20mm

Alle mål i cm.

Sidejern (ikke vist på tegning):
2 Ø10 P339 i alle dragere.

NBR	REVISION	DATA	SIGN.
SUNNDAL LEGE- OG HELSESENTER			
Målestokk	Tegn.	23.01.79	
1:50	Trec.	0.H./r.g.m.	
1:10	Ktr.		
Etablert for:			
Sveilingeniør Selmer T. Thomassen			
Rådgivende ingeniør i byggeteknikk MRIF			
Bokkevollvegen 18 - Molde - Telefon (072) 51 844			
Tegn. nr.			19
Etablert av:			