

VENTILASJON 360.002: AVDELING D BOENHET

- STARTSIDE
- VENTILASJON
 - 360.001
 - 360.002
 - 360.003
 - 360.005
 - 360.006
 - 360.007
 - 360.008
 - 360.009
 - 360.010
 - 360.011
 - 360.013
 - 360.015
 - 360.016
 - 360.017
 - 360.019
 - 360.021
- VARME
 - 320.001
 - 320.002
 - 320.003
 - 320.004
 - 320.005
 - 320.006
 - 320.007
 - 320.008
- KJØLING
- WVS
- DIVERSE
- UR

UTEFØLER RT901

4,8 °C

14,0 °C

Vinter

FRIKJØLING

SETTPUNKTER TILLUFTSTEMPERATUR

Aktuell temp. tilluft: 20,9 °C

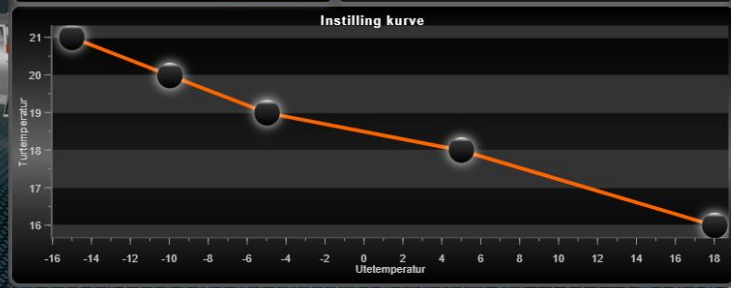
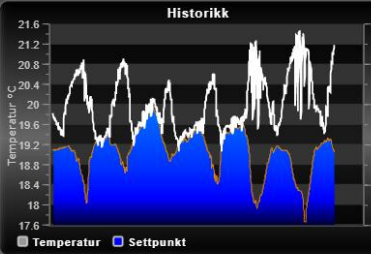
Aktuell settpunkt: 18,0 °C

Min. grense varme: 16,0 °C

Min. grense kjøling: 14,0 °C

Maks. grense: 25,0 °C

Avvik temperatur: 2,0 °C

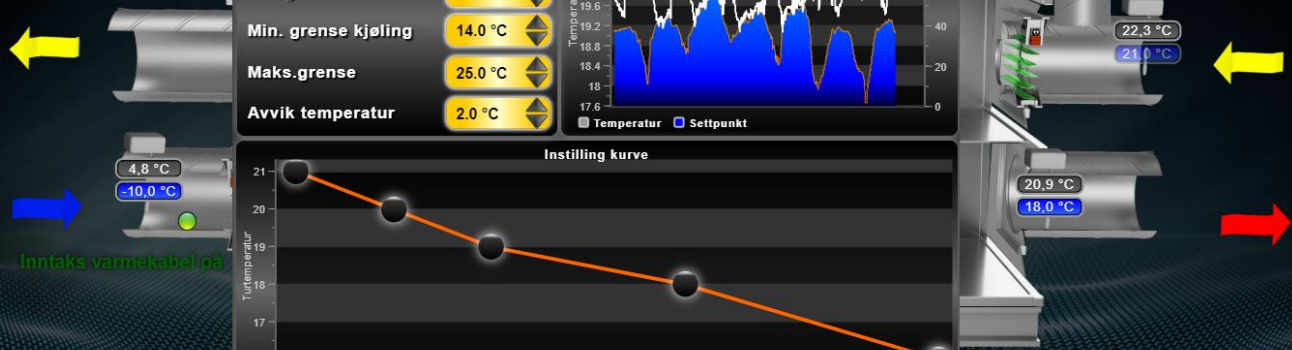


Tag av/på

OFF

Status UR

Hey Hastighet



Tavlevender AUTO

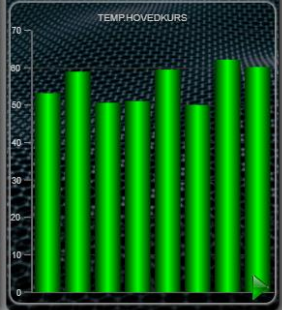
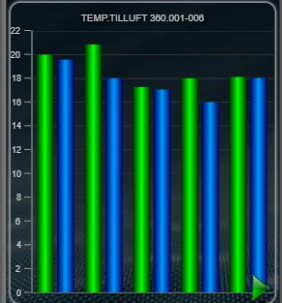
LAV Høy

Brannbryter AUTO

Av På

ALARMLISTE

310.002-	Alarm lav temperatur tappeva
320.002-	Temperatur utenfor regulering
320.004-	Temperatur utenfor regulering



VARME 320.003: AVDELING D, RADIATORER/VENTILASJON

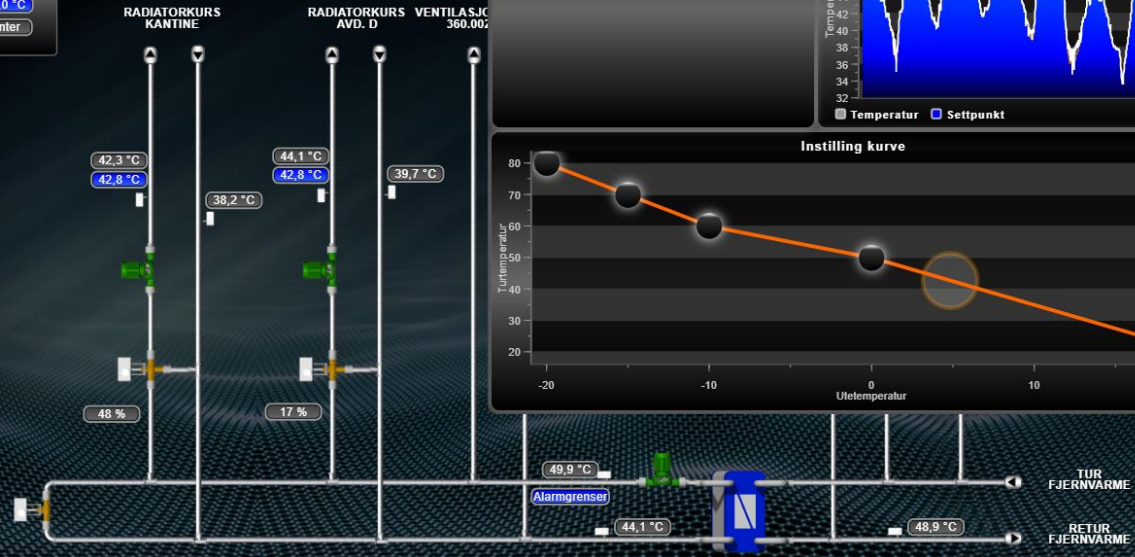
- STARTSIDE
- VENTILASJON
 - 360.001
 - 360.002
 - 360.003
 - 360.005
 - 360.006
 - 360.007
 - 360.008
 - 360.009
 - 360.010
 - 360.011
 - 360.013
 - 360.015
 - 360.016
 - 360.017
 - 360.019
 - 360.021
- VARME
 - 320.001
 - 320.002
 - 320.003
 - 320.004
 - 320.005
 - 320.006
 - 320.007
 - 320.008
- KJØLING
- VVS
- DIVERSE
- UR

UTEFØLER RT901

4,8 °C

18,0 °C

Vinter



SETTPUNKTER VARMTVANN

Aktuell temp. 42,3 °C

Aktuell settpunkt 42,8 °C

Historikk

Temperatur °C

Temperatur Settpunkt

Instilling kurve

Ute temperatur

ALARMLISTE

310.002-	Alarm lav temperatur lappeva
320.002-	Temperatur utenfor regulering
320.004-	Temperatur utenfor regulering

