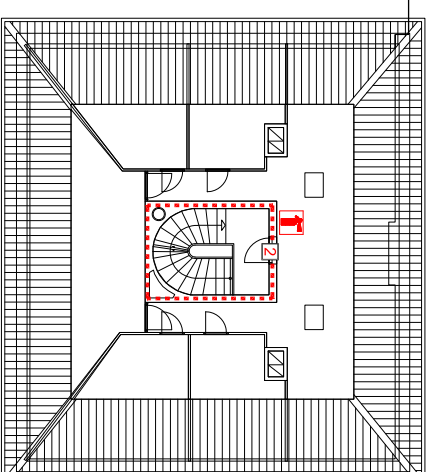
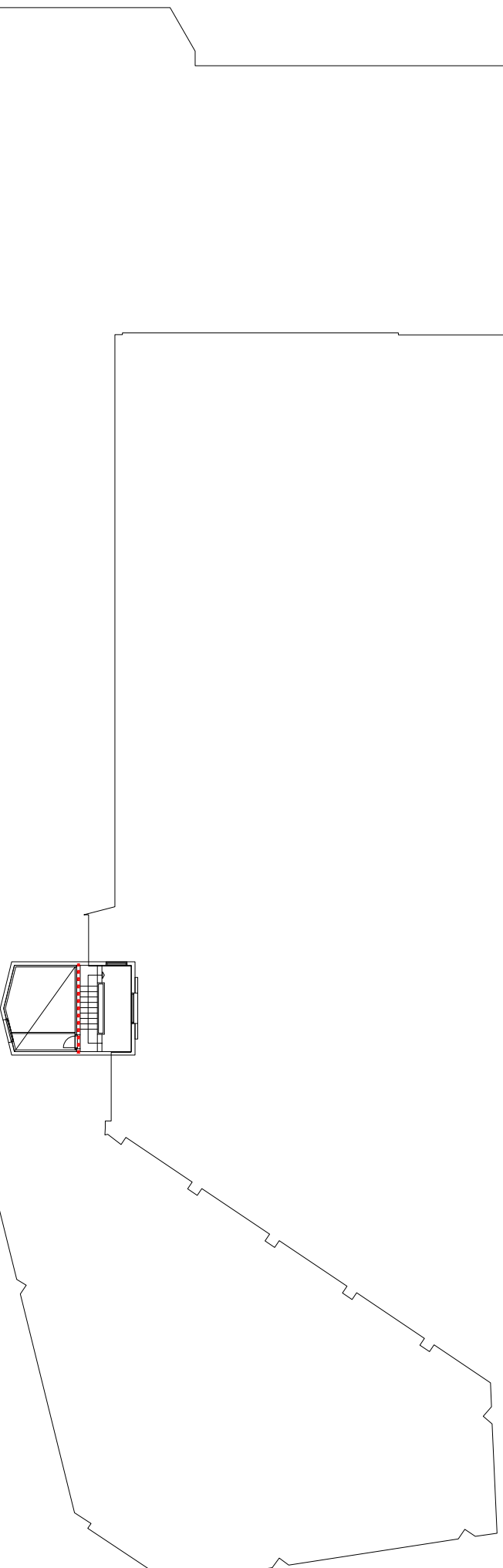


TAKKONSTRUKSJON














PLAN 4. ETASJE / LOFTSPLAN



PLAN 4

PLAN 4. ETASJE
BTA 22 m²

TEGNFORKLARING

-  Branncelle EI 60 A2-s1, d0 [A60]
-  Rømningsvei, intern fluktrute
-  Rømningsvei, intern fluktrute
-  Håndsløkker
-  Brannslange
-  1 Brannklassifisert dør EI: 30-S_a [B30]
-  2 Brannklassifisert dør EI: 30-CS_a [B30S]
-  3 Brannklassifisert dør EI: 60-S_a [B60]
-  4 Brannklassifisert dør EI: 60-CS_a [A60S]
-  5 Brannklassifisert helsdør E 90 [F90]
-  6 Brannklassifisert dør E 30 [F30]

- Manuell sløkkeutstyr dekker alle arealer
- Heltekkende adresserbart brannalarmanlegg iht. NS 3960

Tegningen må ses i sammenheng med byggets detaljprosjektering (se rapport)

REVISJON	DATE	TEGN	KOMNR	REV

EIER:	AREAL:	ca. 90 m ²
BYGG:	TEGNERN DATO:	08.10.17
	USB (08.10.17)	KOMNR. DATO:
	PROSJ. NR.:	MALESTOKK:
	3948	1:250
		FORMAT: A3

STORSTAD KOMMUNE	TEGN. NAVN	3948_TEGNBRANN_STORSTAD19
Kristiansund Kommune		
Storgata 19 - Brannstasjon		
BRANNPLAN 4. ETASJE		

FIRESAFE / FIRESAFE CONSULTING
 Osloveien 120, 7018 Trondheim
 fire-safe@fire-safe.no
 +47 900 90 900