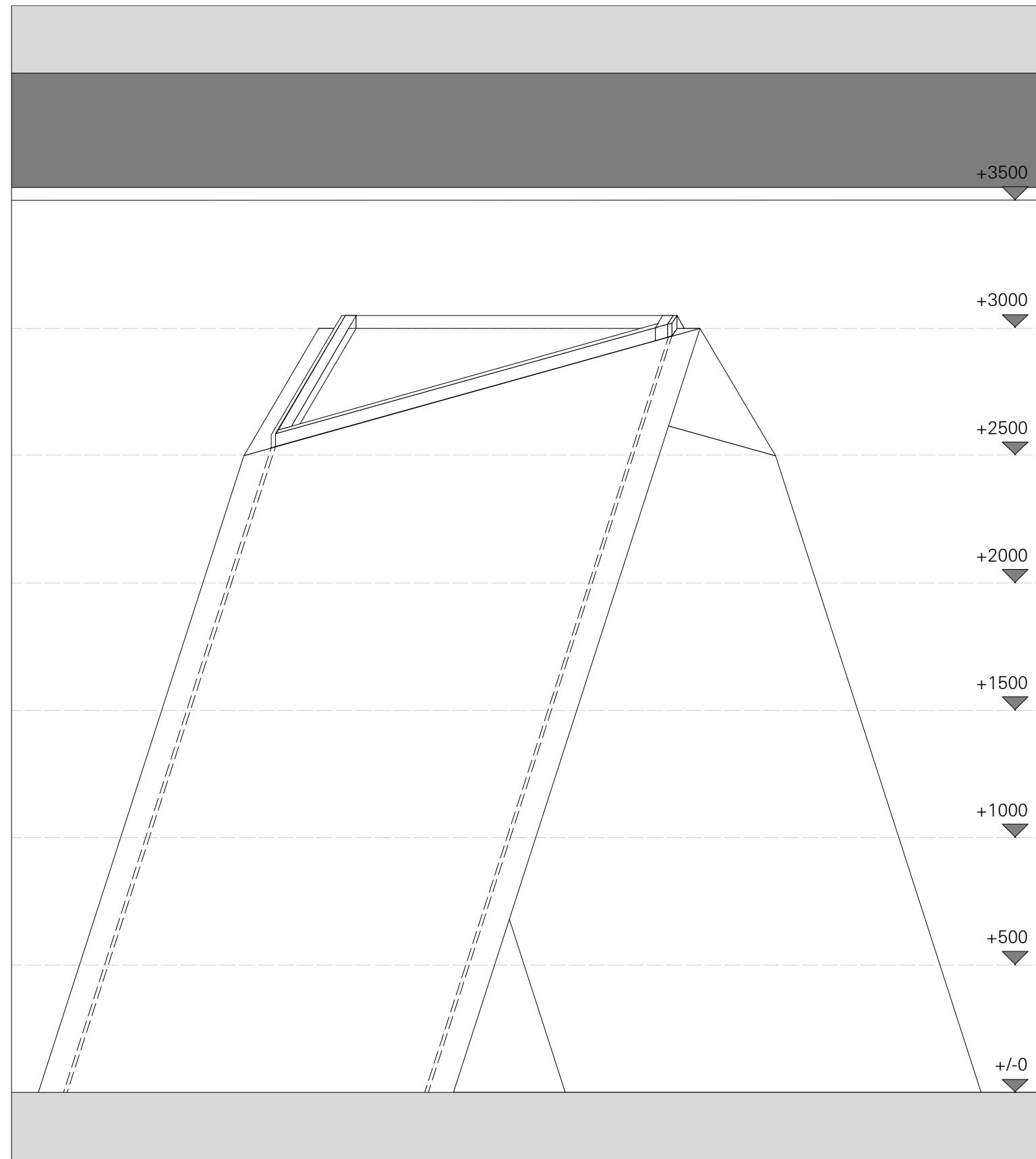
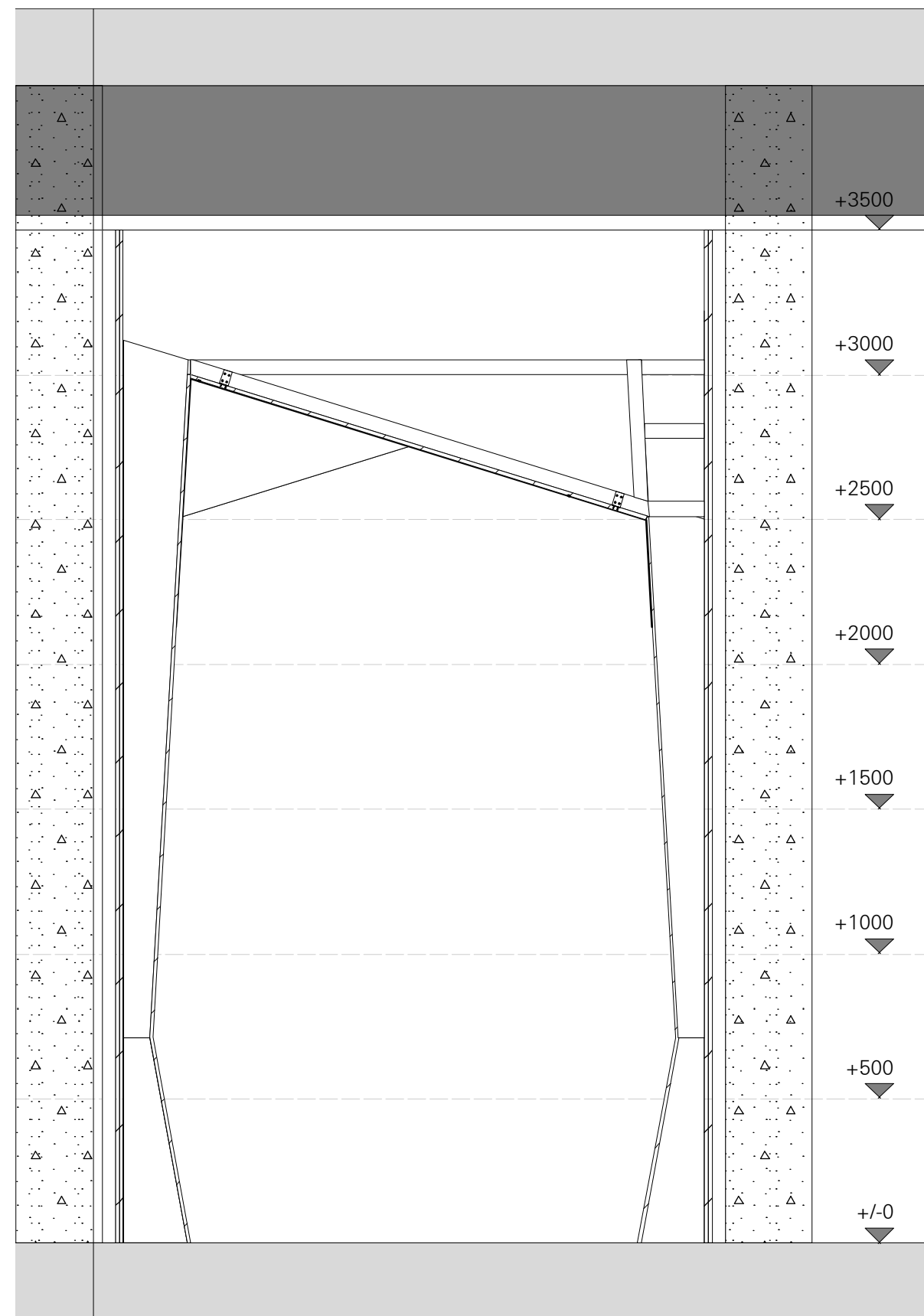


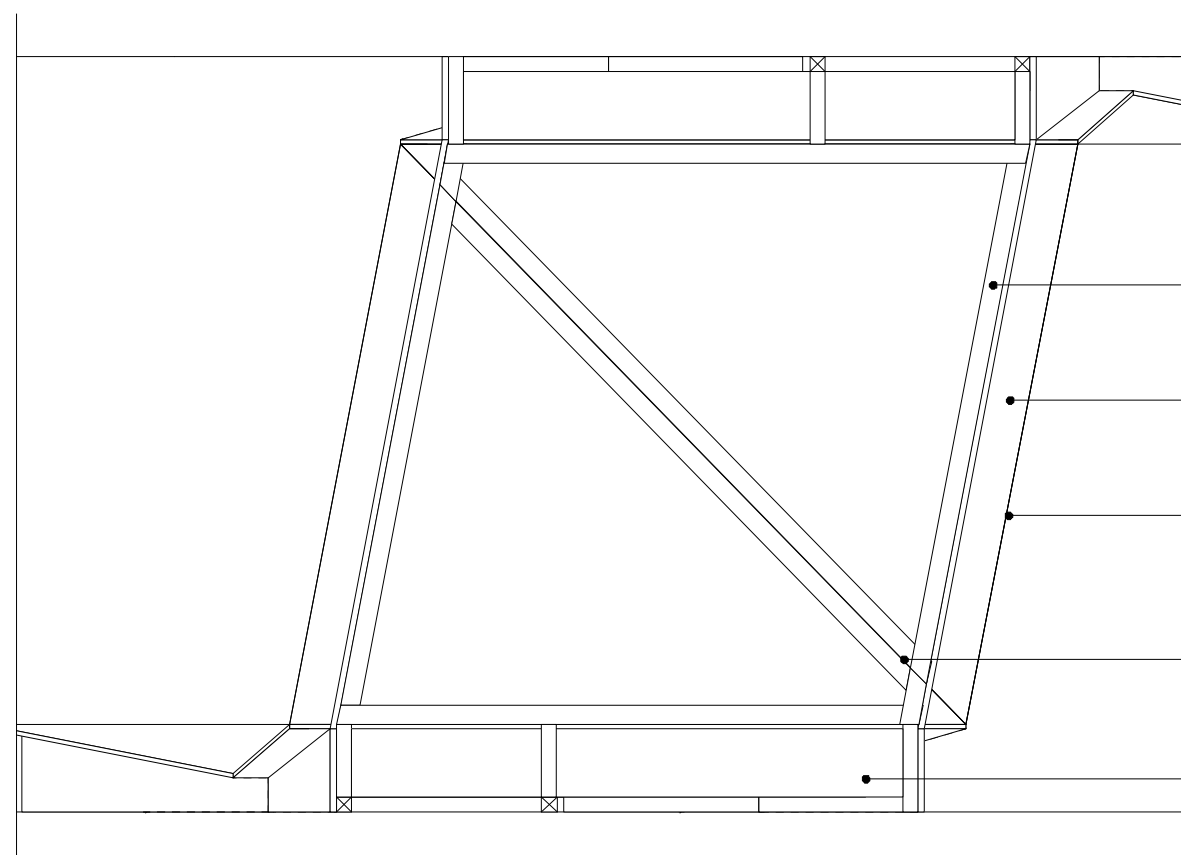
**POS. 4.3**  
**ANGLED WALL TOP**  
 MODULE B



**FRONT VIEW**  
 ANGLED WALL TOP CONNECTION  
 M 1:20



**SIDE VIEW**  
 ANGLED WALL TOP CONNECTION  
 M 1:20



**TOP VIEW**  
 ANGLED WALL TOP CONNECTION  
 M 1:20

Triangular substructure  
 ~50x50mm, acc. to static req.  
 screwed to wall substructure

MDF, acc. to material list  
 ~15mm, acc. to static req.  
 screwed to triangular substructure

paper imitation, acc. to material list  
 printed on one side  
 glued to bottom side of MDF plate, clean and wrinkle-free

Triangular substructures  
 connected at top bar

angled wall

**LEGEND**

**SPECIALISTS**

M	MEDIEN
G	GRAPHIC
L	LIGHT
TGA	BUILDING TECHNOLOGY
	EXHIBITION ATB

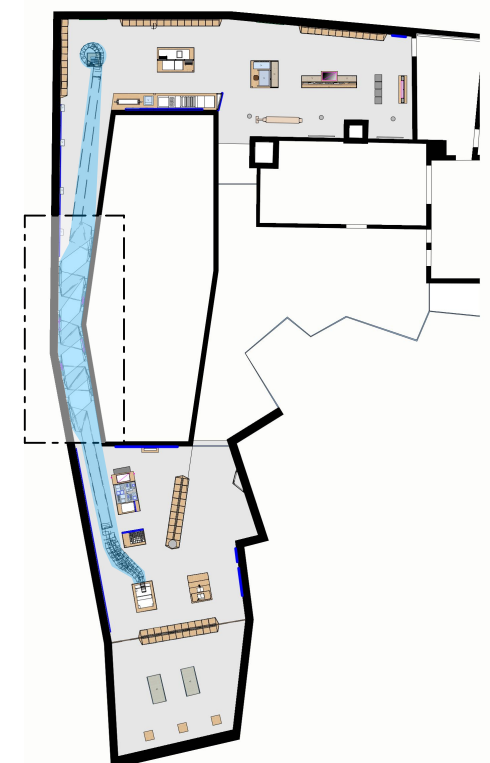
**RELEASED**

All measurements have to be revised carefully by the contractor/executor and compared with on-site situations. Differences concerning measurements or planning / stock have to be conveyed immediately to the designer. Details and drawings are only valid with annotation of approval by the designer.



**NORWEGIAN PRINTING MUSEUM**  
 STAVANGER

**KEY PLAN**



**MEDIA CORRIDOR**

**MODULE B - ANGLED WALL UPPER CONNECTION**

**client** **Museum Stavanger**  
 Øvre Strandgate 88  
 4005 Stavanger | Norwegian  
 T. +47 40 60 17 01  
 www.museumstavanger.no  
 bitten.bakke@museumstavanger.no

**planner** **ATELIER BRÜCKNER GMBH**  
**exhibition** Krefelder Strasse 32  
**scenography** 70376 Stuttgart | Germany  
 T. +49 711 5000 77 116  
 F. +49 711 5000 77 22  
 ngm@atelier-brueckner.com

papersize	scale	unit	sign
DIN A2	1:20	mm	sm

filename  
**NGM-ATB\_D\_1.4.2.0\_05**

date	code	planningphase
13.09.2019	NGM-ATB	LPH 4 - DD

type	hierarchy	no.	index
D	1.4.2.0	05	00