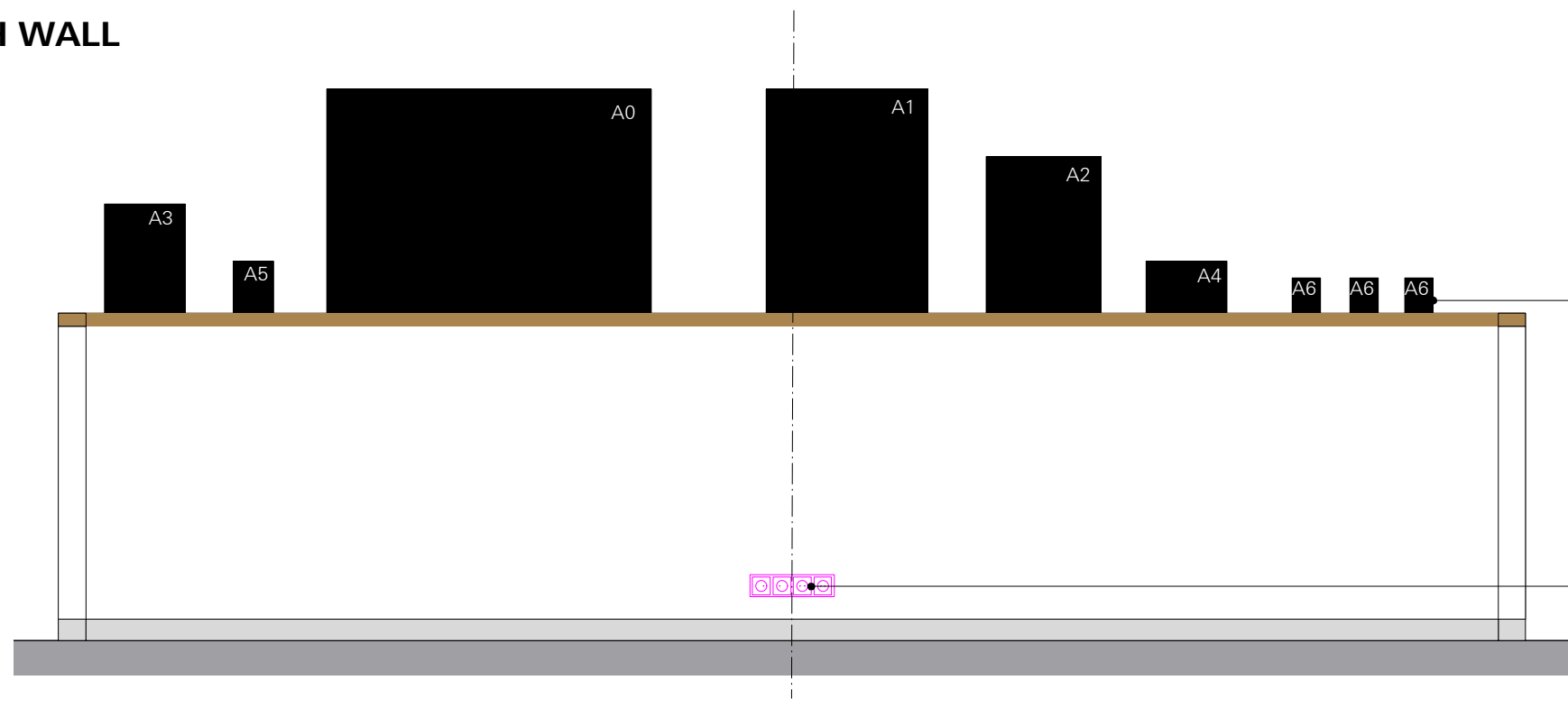


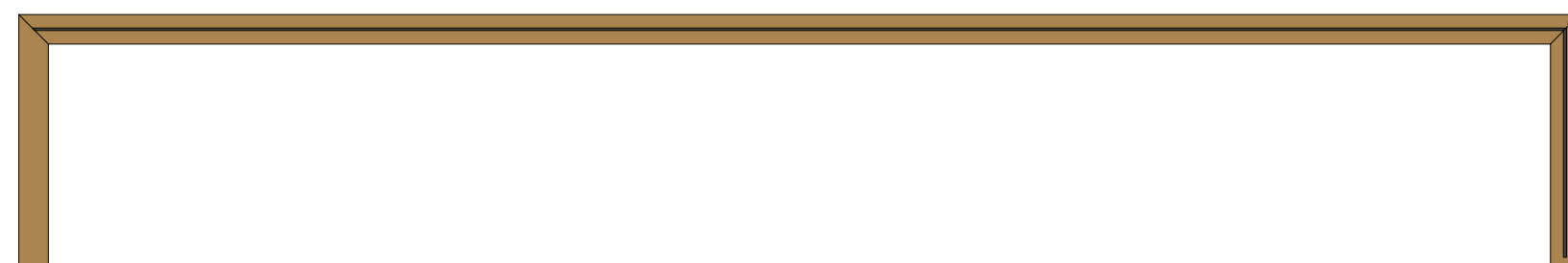
**POS. 5.1**  
**SEMI HIGH WALL**  
MODULE F



graphic panel, printed on one side  
inserted in groove  
different DIN-sizes  
acc. to graphic  
sizes see plan 2.1.1.0\_03

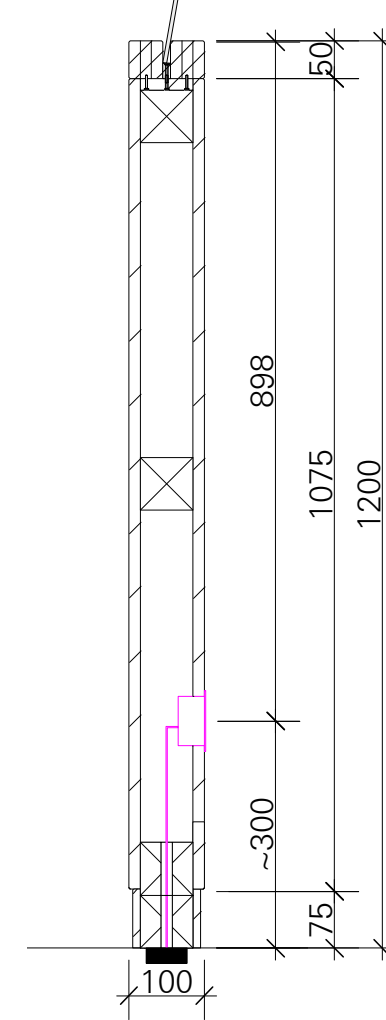
sockets acc. to plan for power  
and network, centrally located in  
the wall, surface mounted,  
stainless steel, brushed optik

**ELEVATION**  
M 1:25



corner connection  
mitre joint

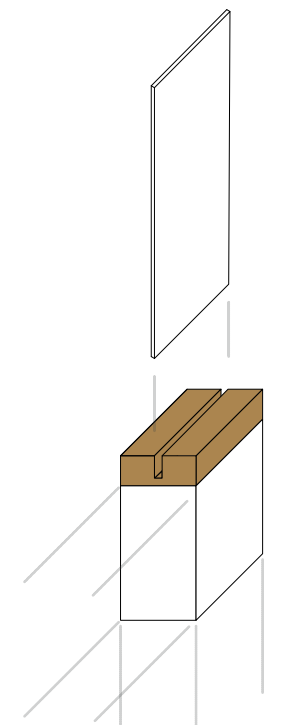
**TOP VIEW**  
M 1:25



**VERTICAL SECTION**  
SEMI HIGH WALL  
M 1:10



**TOP VIEW**  
WALL POSITIONS  
M1:100



**ISOMETRIC VIEW**  
NO SCALE

wooden bar, plywood acc. to material list  
50x45mm, bevel 2mm  
recess for graphic panels  
invisible screwed to substructure

substructure  
~70x15mm, acc. to static req.

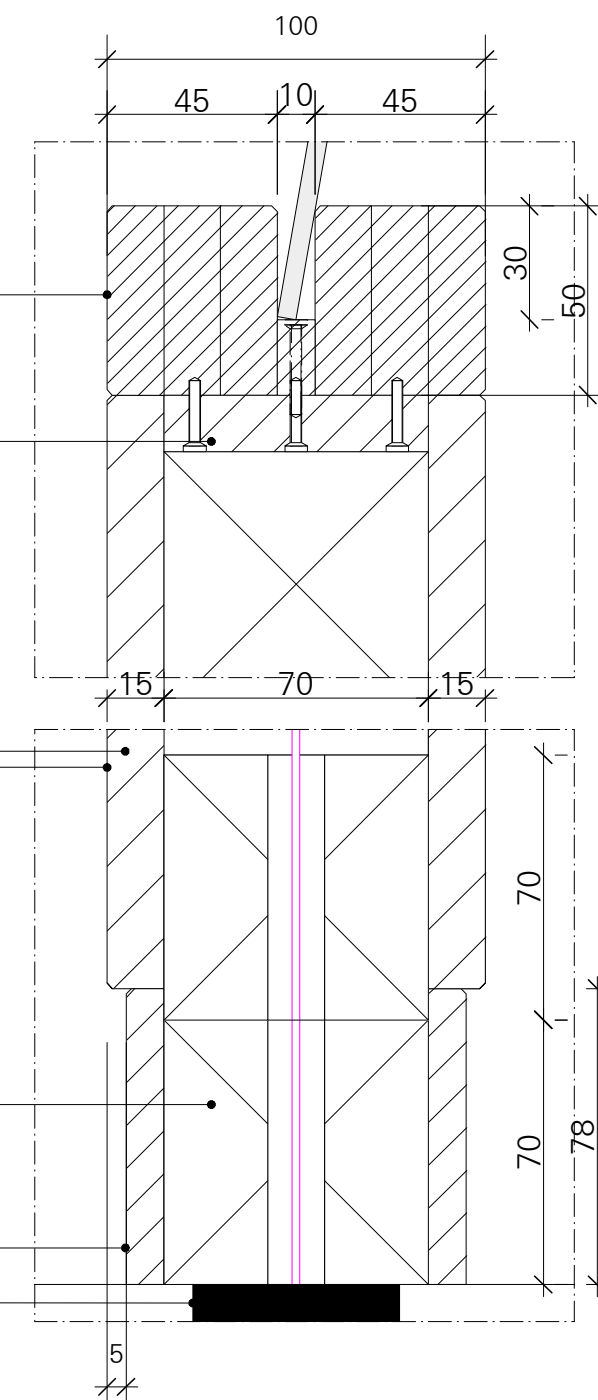
wooden plate, acc. to material list  
~15mm, acc. to static req.  
mounted non visible to substructure

lacquered, white, acc. to material list,  
min. 3x coated

substructure  
~70x70mm, acc. to static req.

Skirting, stainless steel optik, eg.  
Reposal, ir similar, acc. to material list  
invisible mounted to substructure

cable outlet floor  
details see plan F\_2.0.0.0\_02



**VERTICAL SECTION**  
SEMI HIGH WALL  
M 1:2

**LEGEND**

**SPECIALISTS**

M	MEDIEN
G	GRAPHIC
L	LIGHT
TGA	BUILDING TECHNOLOGY
	EXHIBITION ATB

X = power markings

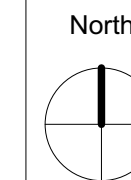
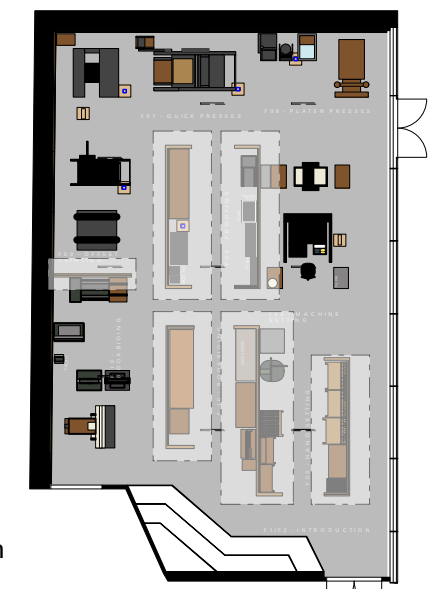
**RELEASED**

All measurements have to be revised carefully by the contractor/executor and compared with on-site situations. Differences concerning measurements or planning / stock have to be conveyed immediately to the designer. Details and drawings are only valid with annotation of approval by the designer.



**NORWEGIAN PRINTING MUSEUM**  
STAVANGER

**KEY PLAN**



**DETAIL PLAN - SEMI HIGH WALL**  
SECOND FLOOR

**client** **Museum Stavanger**  
Øvre Strandgate 88  
4005 Stavanger I Norwegian  
T. +47 40 60 17 01  
www.museumstavanger.no  
bitten.bakke@museumstavanger.no

**planner** **ATELIER BRÜCKNER GMBH**  
**exhibition** Krefelder Strasse 32  
**scenography** 70376 Stuttgart I Germany  
T. +49 711 5000 77 116  
F. +49 711 5000 77 22  
ngm@atelier-brueckner.com

papersize	scale	unit	sign
<b>DIN A2</b>	<b>1:2, 1:10, 1:25, 1:100</b>	<b>mm</b>	<b>sm</b>

filename  
**NGM-ATB\_D\_2.1.1.0\_01**

date	code	planningphase
<b>13.09.2019</b>	<b>NGM-ATB</b>	<b>LPH 4 - DD</b>

type	hierarchy	no.	index
<b>D</b>	<b>2.1.1.0</b>	<b>01</b>	<b>00</b>